

MEETING AGENDA

Date | June 7, 2012

Time | 10:00 am

Location | MCWD Board Room

Regarding | Minnehaha Creek/Lake Hiawatha TMDL

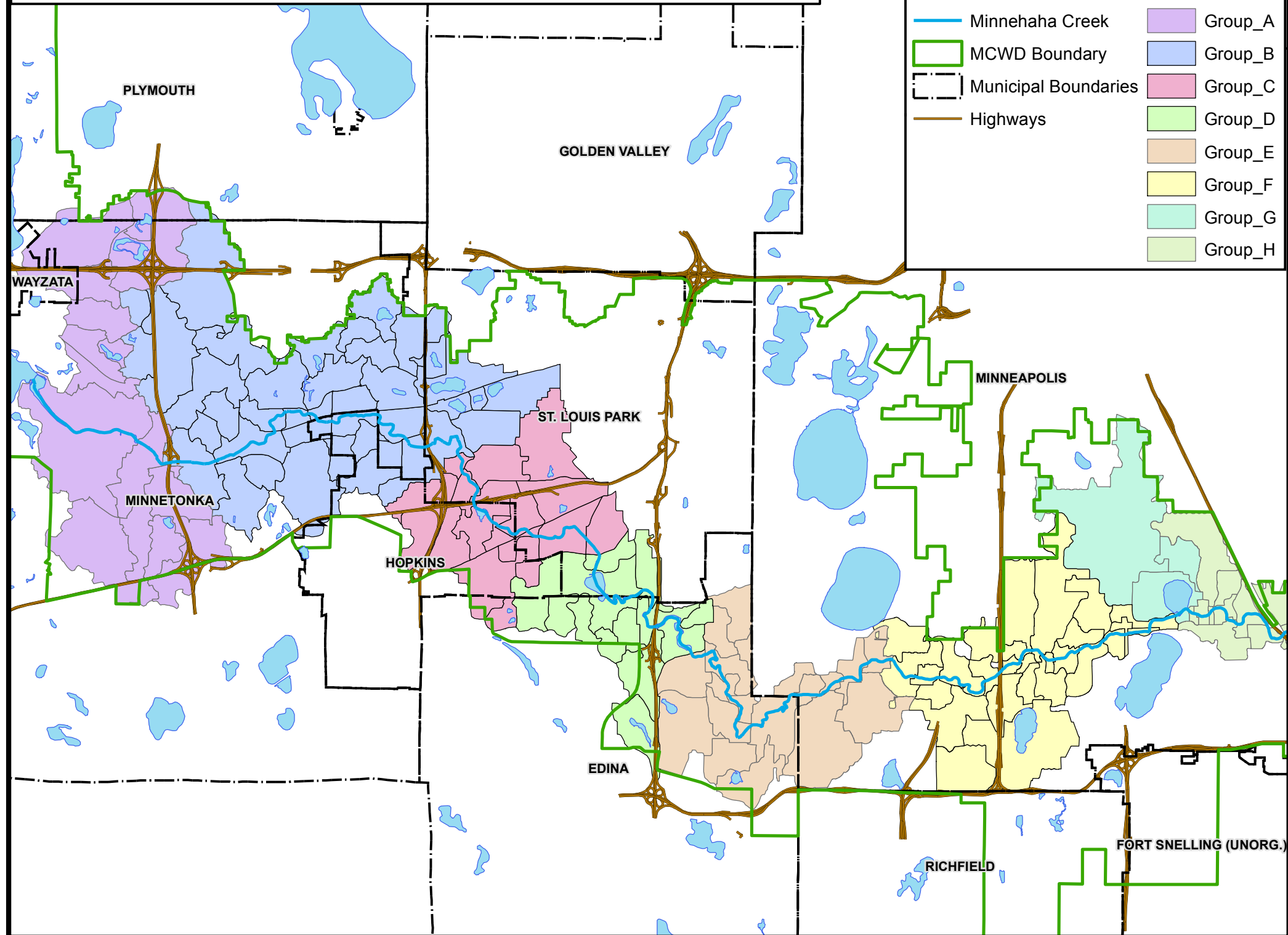
In attendance |

-
1. **Introductions/Recap**
 2. **Summary of CIP projects**
 3. **Bacteria reductions**
 4. **Wasteload allocation options**
 - a. **Equal percent reduction**
 - b. **Area export**
 - c. **Impervious cover**
 - d. **Combination**
 5. **Next Steps**
 - a. **Finalize linkage analysis**
 - b. **MS4 review and comment – wasteload allocation options**
 - c. **Draft TMDL and Implementation Plan**

Minnehaha Creek-Lake Hiawatha TMDL - Subwatershed Groups

Legend

- Minnehaha Creek
- MCWD Boundary
- Municipal Boundaries
- Highways
- Group_A
- Group_B
- Group_C
- Group_D
- Group_E
- Group_F
- Group_G
- Group_H



Summary of upcoming projects identified in CIPs throughout the MC-LH TMDL drainage area:

MS4	Project Name	Project Description	Proposed Implementation Year	Location	Estimated P Removal (lbs/yr)
Minneapolis	Blue Water Partnership Project	Raingarden and connection of residential land and ROW to ponds in Hiawatha Golf Course.	2012	Lake Hiawatha direct drainage	185
Minneapolis	Flood area 22		2014	Tributary to Lake Hiawatha	30 (no design yet, conservative place holder)
Minneapolis	Flood area 29/30		2014	Tributary to Lake Harriet (would not be included)	30 (no design yet, conservative place holder)
MPRB	Hiawatha Golf Course parking lot	Reconstruction of parking lot. At this time, not planning any BMPs beyond what is required, but there may be opportunities to do more.	2013	Hiawatha Golf Course	Unknown
Wayzata	Holdridge Neighborhood	Installing watermain and reconstructing streets.	2012	SE of Hwy 12 and 101. Appears to be partly within Gray's Bay (GB-1) and Minnehaha Creek (MC-4) drainage areas.	Unknown
Richfield/ MCWD	Taft-Legion Improvement Project	Treat SW entering into and water pulled out from Taft Lake through a flocculation system and other BMPS.	2013	Drainage to Legion and Taft Lakes (goes through Nokomis, so not included)	179-482 (depending on which elements are constructed and effectiveness of each)
Hopkins/ MCWD	Cottageville Park	Treatment of stormwater (likely ponds) that currently discharges directly to creek.	2013?	NE of Blake Road and Lake Street	8
St. Louis Park/ MCWD	Reach 20 Project	Stream remeander and stormwater treatment project.	2012-2013	Meadowbrook Rd to Louisiana Ave	60 (in first phase, likely more in future phases)
MCWD	Minnehaha Creek Streambank Improvements	Streambank restoration projects - intended to address erosion and improve vegetation and habitat.	2013-2016	Reaches 4, 6, 7, 9, 12, 14	Not quantified in MCWD Plan
MCWD	Minnehaha Creek Regional Volume and Load Reduction	Numerous subwatersheds identified for volume reduction through infiltration or other practices.	2013-2016	Subwatersheds MC-129, 147, 170, 58, 70-75, 95, 97, 134, 135, 139, 140, 146, 150, 151, 152	626 (target identified in MCWD Plan)
Total					909

|