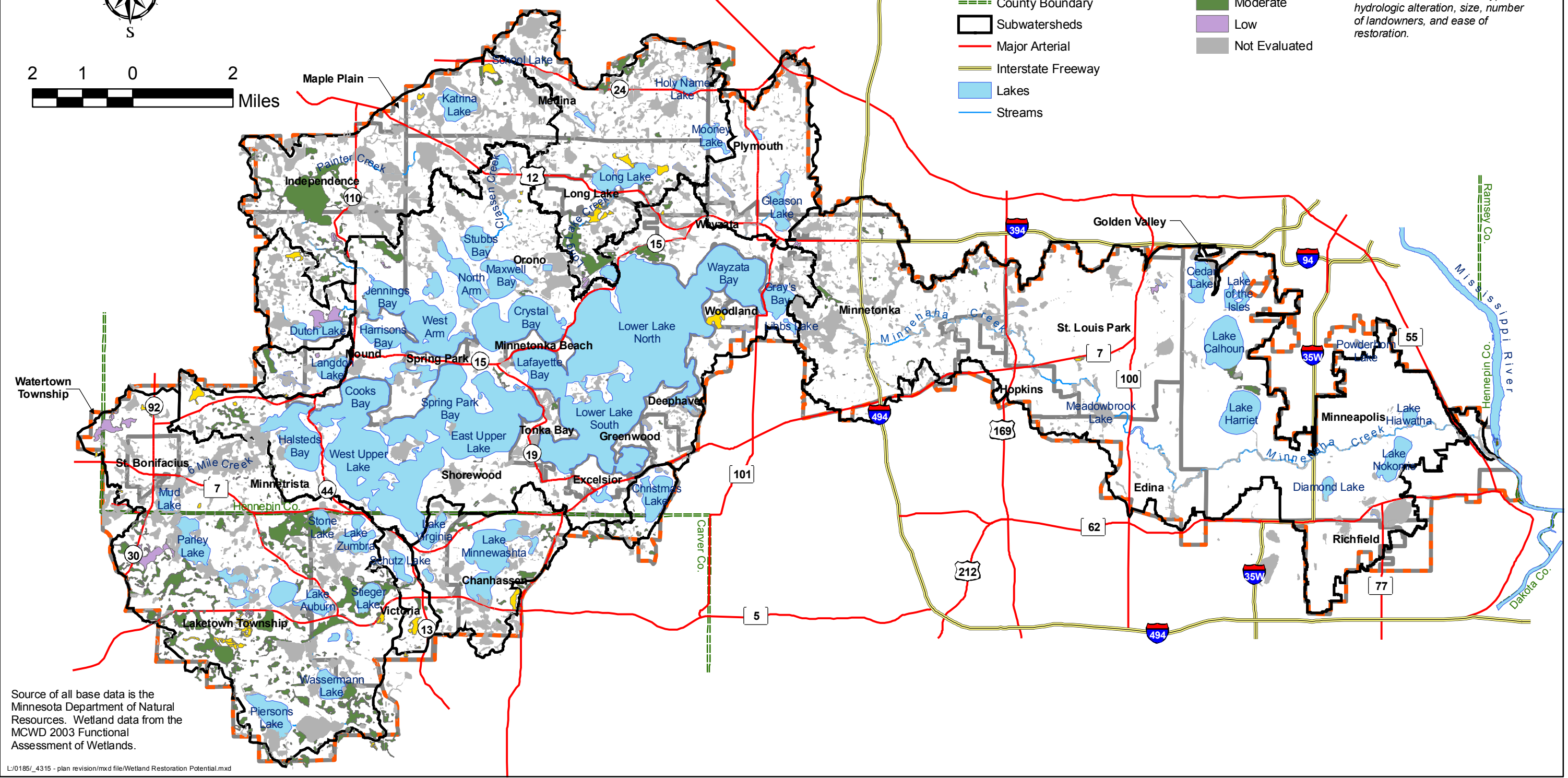


### Legend

- Watershed District Legal Boundary
  - Municipal Boundary
  - County Boundary
  - Subwatersheds
  - Major Arterial
  - Interstate Freeway
  - Lakes
  - Streams
- Restoration Potential**
- High
  - Moderate
  - Low
  - Not Evaluated

Restoration potential as evaluated in the 2003 Functional Assessment of Wetlands. Based on physical factors such as extent and type of hydrologic alteration, size, number of landowners, and ease of restoration.



Source of all base data is the Minnesota Department of Natural Resources. Wetland data from the MCWD 2003 Functional Assessment of Wetlands.

L:/0185/\_4315 - plan revision/mxd file/Wetland Restoration Potential.mxd

## MINNEHAHA CREEK WATERSHED DISTRICT

Wetlands Evaluated in the Functional Assessment of Wetlands, by Restoration Potential



JAN 2006

Figure 29