



Title:	Approving Second Memorandum of Understanding with the City of Victoria	
Resolution number:	24-057	
Prepared by:	Name: Kailey Cermak Phone: 952-641-4501 kcermak@minnehahacreek.org	
Reviewed by:	Name/Title: Michael Hayman, Director of Project Planning	
Recommended action:	Authorize the District Administrator to execute a memorandum of understanding with the City of Victoria	
Schedule:	Fall 2024: Execute Memorandum of Understanding 2025 and beyond: Ongoing coordinated planning and implementation efforts	
Budget considerations:	N/A	
Past Board action:	Res #: 17-078	Authorization to Execute a Contract for Victoria Comprehensive Plan Coordination
	Res #: 15-030	Authorization to Execute a Memorandum of Understanding with the City of Victoria

Background:

In 2014, the MCWD adopted its Balanced Urban Ecology (BUE) policy, which emphasizes the importance and benefits of integrating water resource management with land use planning. Central to this planning philosophy is building strong relationships with both public and private partners to understand their goals and priorities. That same year, the Six Mile Creek-Halsted Bay (SMCHB) subwatershed was identified as a focal priority for planning and implementation activities due to its abundant natural resources, the pressures of regional growth, complex jurisdictional setting, and its connection to Halsted Bay of Lake Minnetonka, the most impaired lake in the watershed. Building on this foundation, MCWD sought to deepen its collaboration with key municipalities within the subwatershed, starting with the City of Victoria, whose current and future boundary encompasses the headwater management units.

In March 2015, the City of Victoria and MCWD formalized a desire for strong collaboration through a memorandum of understanding (Attachment 1). This MOU underscores the mutual value both agencies place on cooperative land-use planning, cross-agency collaboration on water resource issues, and regulatory coordination. One of the priority water resource management areas identified for increased collaboration was Wassermann Lake, an impaired waterbody within the City of Victoria. The MOU provided geographic focus for investment and collaboration, while also leaving room to explore opportunities across the City and subwatershed.

Since the execution of the 2015 MOU and subsequent implementation of the SMCHB subwatershed plan, the City and MCWD have accomplished the following key areas of work:

1. **Water Resource Improvements:** invested substantially in the Pierson-Marsh-Wassermann management unit, resulting in measurable improvements to Wassermann Lake's water quality.
2. **Development Coordination:** Streamlined coordination efforts for the City by identifying issues early, collaborating with developers on solutions, and forecasting regulatory requirements to enhance regional stormwater facilities to support future growth.

3. **Collaborative Planning:** Partnered on land use studies to support the City's 2040 plan, leading to the adoption of the Victoria Chain of Lakes Greenway Policy (Attachment 2).

Victoria Chain of Lakes Greenway Policy:

While implementation efforts and investments in the short-term were focused southward, near Wassermann, to better align with the City's future development activity, planning attention was also directed toward the City's western growth area (WGA). In preparation of the City's 2040 comprehensive plan, MCWD and the City collaborated on a land-use study for the WGA, aiming to understand likely development patterns and find balance between anticipated development needs and the preservation and restoration of natural resources. This work led to the City's creation and adoption of the Victoria Chain of Lakes Greenway Policy (Greenway Policy), which outlines a vision for future development that prioritizes natural resource protection and the establishment of contiguous green/open space corridors.

The Greenway Policy serves as a foundation and guidepost for ongoing planning and implementation efforts, reinforcing the BUE vision of integrating land use and water resource management. As MCWD and the City move into their next phase of partnership in the WGA, this policy is the guiding vision for aligning development needs with natural resource goals.

Summary:

As both MCWD and the City approach their next 10-year plan cycles, it is an opportune time to revisit and update the partnership framework. This presents an opportunity to reflect on past successes, consolidate effective strategies, and adapt our approach to meet the natural resource and community needs of the City's WGA. MCWD has a particular interest in focusing on project opportunities in the Turbid-Lundsten management unit, to address the state water quality impairments in the WGA. Turbid Lake is listed as impaired for nutrients, with a Total Maximum Daily Load (TMDL) established, and South Lundsten Lake is soon to follow, with a TMDL actively under development by the Minnesota Pollution Control Agency (MPCA).

Given the successes of the previous MOU, a second memorandum of understanding (Attachment 3) has been drafted to establish clear expectations and shared commitments, while providing direction for the next wave of partnership. This new MOU builds on the successful themes of the original partnership and outlines three key areas of focus:

1. **Greenway Planning and Implementation:** focused planning and investment to implement the greenway vision, ahead of development, to improve and protect natural resources, improve development quality, and reduce development risk.
2. **10-Year Plan Coordination & Ongoing Partnership:** Commitment to collaborate on the development of both the City's 2050 comprehensive plan and the District's 2027 Watershed Management Plan (WMP) to strengthen the integration of land-use and water management planning.
3. **Regulatory Program Coordination:** Continued refinement and streamlining of regulatory processes to minimize conflict between the built and natural environments at the onset of development.

At the October 24, 2024 Board meeting, staff provided an overview presentation of the draft MOU and its key areas of work and focus. On October 28, 2024, Victoria City Council unanimously approved the second MOU, following a presentation by MCWD staff. The MOU will be placed on the consent agenda for the Board's approval on the November 7, 2024 Board meeting, allowing staff to proceed with its execution.

Supporting documents (list attachments):

- Attachment 1: 2015 Memorandum of Understanding with City of Victoria
- Attachment 2: Victoria Chain of Lakes Greenway Policy
- Attachment 3: Draft Second Memorandum of Understanding



RESOLUTION

Resolution number: 24-057

Title: Approving Second Memorandum of Understanding with the City of Victoria

- WHEREAS, The Minnehaha Creek Watershed District Board of Managers has adopted a balanced urban ecology policy that recognizes the multi-sector value of integrating natural systems and land use planning, requiring public and private partnerships and sustained focus in areas of high need and high opportunity;
- WHEREAS, Pursuant to Resolution 14-047 the MCWD Board of Managers has identified the Six Mile Creek – Halsted Bay (SMCHB) subwatershed as a priority area for focusing District planning activities and coordination efforts with subwatershed partners;
- WHEREAS, On March 26, 2015 the Board authorized the District to enter a Memorandum of Understanding (MOU) with the City of Victoria (the City), outlining opportunities to collaborate and integrate mutual efforts in the realms of coordinated planning of local water and land use plans, assessment of specific water management issues, and coordinated regulatory review of water and land development;
- WHEREAS, Since 2015, the City and MCWD have achieved substantial progress on multiple shared objectives, including (1) water resource improvements, (2) development and regulatory coordination, and (3) integrated land-use planning;
- WHEREAS, The City developed its 2040 plan, “Our Victoria Tomorrow,” establishing a comprehensive vision for its western growth area that includes the Victoria Chain of Lakes Greenway Policy and Implementation Plan (greenway policy);
- WHEREAS, The greenway policy, developed in partnership with MCWD, outlines a shared vision for future development and growth in the western growth area that prioritizes natural resource protection and the establishment of contiguous green/open space corridors;
- WHEREAS, The District and City wish to continue their collaboration with respect to water quality and ecological integrity within the City as a whole, but with an emphasis on the relationship of natural systems to the built environment within the western growth area, in advance of annexation, public infrastructure investment, and private development activity;
- WHEREAS, The District wishes to give particular attention to the Turbid-Lundsten Management unit to address water quality impairments, where the District has identified wetland restoration, internal load treatment, rough fish management, and acquisition of fee or easement rights as promising approaches to improve the management unit and SMCHB system as a whole;
- WHEREAS, the City and District recognize the value of their previous partnership framework and collaboration, and both parties are entering into new planning cycles: the City with its 2050 comprehensive plan, and the District with its 2027 Watershed Management Plan, presenting an opportune time to update the partnership framework and adapt it to the needs of the western growth area;

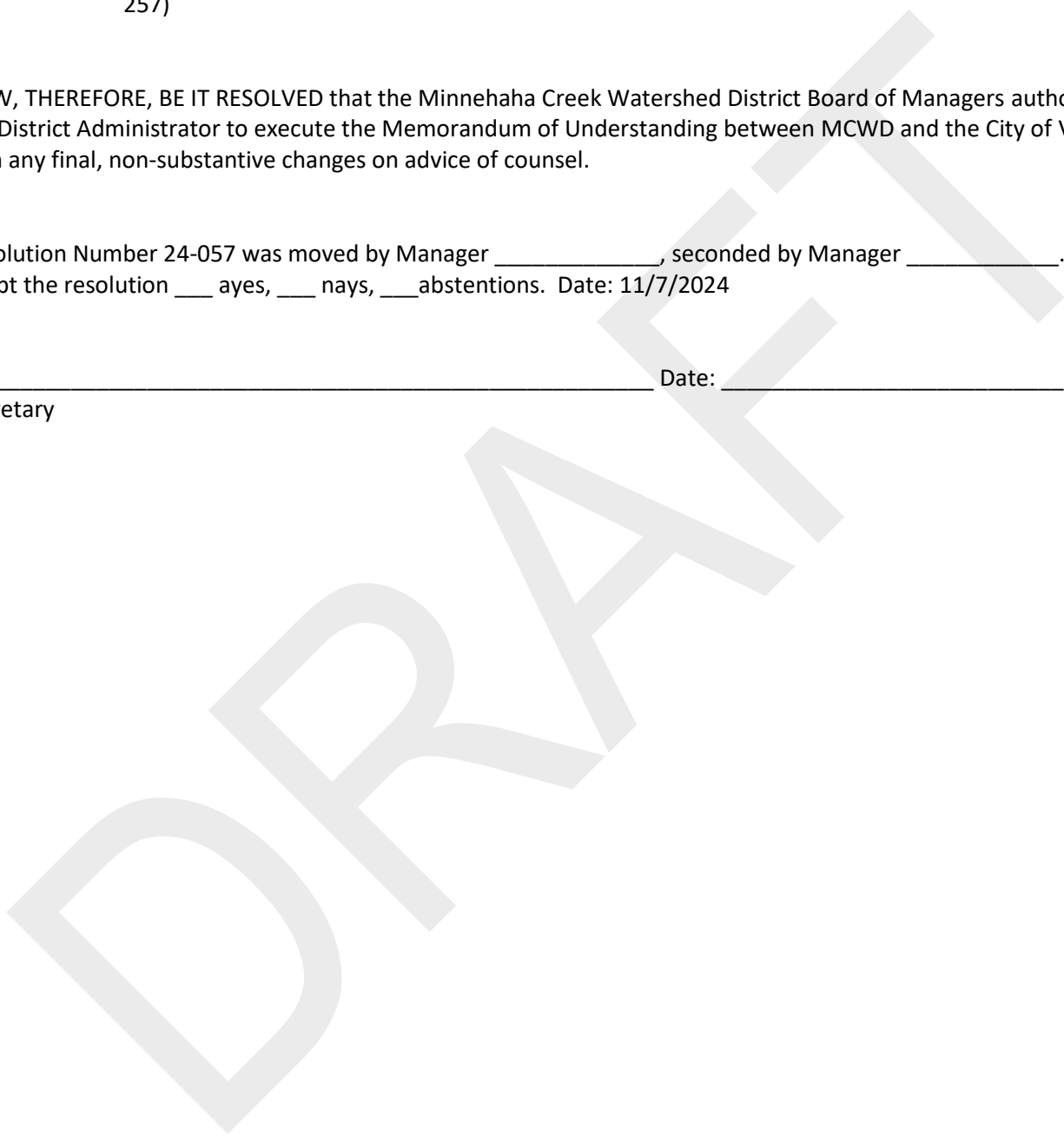
WHEREAS, the attached second Memorandum of Understanding is guided by the greenway policy and establishes a shared commitment to (1) implement the greenway vision through focused planning and investment, (2) coordinate on upcoming 10-year plans to deepen alignment and integrate shared priorities, and (3) streamline regulatory processes to support sustainable development and mitigate development risk; and

WHEREAS, on October 28, 2024, the Victoria City Council unanimously approved the MOU (Agenda Report No. 24-257)

NOW, THEREFORE, BE IT RESOLVED that the Minnehaha Creek Watershed District Board of Managers authorizes the District Administrator to execute the Memorandum of Understanding between MCWD and the City of Victoria, with any final, non-substantive changes on advice of counsel.

Resolution Number 24-057 was moved by Manager _____, seconded by Manager _____. Motion to adopt the resolution ___ ayes, ___ nays, ___ abstentions. Date: 11/7/2024

Secretary Date: _____



Attachment 1

MEMORANDUM of UNDERSTANDING

This Memorandum of Understanding (MOU) is made between the City of Victoria, a Minnesota municipal corporation ("City"), and the Minnehaha Creek Watershed District ("District"), a watershed district and political subdivision with powers at Minnesota Statutes Chapters 103B and 103D.

Recitals and Statement of Purpose

WHEREAS the City is a developing community in an area of abundant natural environs and water resources in Carver County, with existing storm water systems within the Six Mile Creek subwatershed, and plans to continue expansion of the City under an orderly annexation agreement that will further the City's presence in the subwatershed;

WHEREAS the District Board of Managers (Resolution 14-009) has adopted a "balanced urban ecology" approach, an integrated approach to planning that recognizes the relation among sound ecological systems, well-managed water resources and healthy communities, and which rests on an understanding of the needs and desires of communities, in order to guide more broadly conceived watershed programs and projects that protect and enhance water resources while promoting the economic and social well-being of the District's local governments;

WHEREAS this approach incorporates a subwatershed focus because such a focus rewards an investment in a hydrologic, ecologic and land use knowledge base; allows the District to form and develop relationships with municipalities and other local partners; and fosters opportunities to integrate water resource goals with other community goals as to the built environment as well as local economic vitality, recreational assets and quality of life;

WHEREAS the District Board of Managers (Resolution 14-047) has identified the Six Mile Creek subwatershed as a District priority focus for reasons including the impaired condition of Halsted Bay, the present and anticipated level of growth and development activity and support among local governments and lake associations within the subwatershed;

WHEREAS every ten years the District is required to update its watershed management plan (WMP), and it is beginning an effort at this time toward completing its update in 2017, which will incorporate the balanced urban ecology approach;

WHEREAS reflecting its designation of the Six Mile Creek subwatershed as a priority focus, the District intends to establish a Six Mile Steering Committee to develop a subwatershed project and program implementation plan; and

WHEREAS the City is a principal municipality and land use authority within the Six Mile Creek subwatershed, has partnered effectively with the District in the recent past on matters affecting land development and water resource management through the coordination of development planning and permitting, and is experiencing growth that is anticipated to continue;

WHEREAS the City supports the District's direction to coordinate efforts under the balanced urban ecology approach, and wishes to work with the District both to improve water quality within the subwatershed and to implement programs and projects that integrate water resource and community goals by capitalizing on development potential while reducing the demand on personnel resources and

utilizing the expertise each party, the City and District, holds independently which contributes to the betterment of both parties without duplication of efforts in a singular area;

WHEREAS it is, accordingly, an opportune time for the District and City to formalize their mutual commitment to integrating efforts and aligning resources in order to plan wisely, make sound investments in infrastructure, and protect and improve natural systems so as to foster a vibrant and healthy community;

THEREFORE this MOU documents mutual goals and establishes a cooperative framework within which the potential for beneficial and cost-effective projects and programs may be explored.

Terms of Understanding

1. Areas of Collaboration. The City and District will work together in a number of areas. Specifically, but not exclusively, areas of mutual efforts may include:

a. Coordinated Planning.

i. Early coordination between the District and the City as a part of the District's WMP update process and in advance of the City's local water and comprehensive land use plan revisions that will occur in 2017-18. Specifically, this may include the City's dedication of policy, planning and technical resources to the work of the Six Mile Steering Committee and the development of the Six Mile subwatershed implementation plan as there is a direct impact those efforts will have on the City's long-term development strategies. In addition, the parties will work together to understand the optimal intersection of land use, infrastructure and ecological considerations and to develop an integrated investment strategy toward mutual and complementary goals.

ii. Ongoing coordination with a continued District resource commitment in the City's development of its local water and comprehensive land use plans. In particular, but not exclusively, as the City looks for opportunities to enhance the ability for public interaction with Stieger Lake and its context as a potential downtown destination generator and amenity, the parties will coordinate planning, infrastructure, regulatory and capital project authorities to protect the lake's ecological and water quality and position it for beneficial community use.

iii. Coordinated implementation, including cooperation on continuing improvement of City maintenance, road management and other housekeeping programs; cultivation of public and private partners and funding sources, coordination and integration of capital work and collaboration in public outreach.

b. Assessing Specific Water Management Issues.

i. Examining flooding issues at Deer Run Golf Club in context of regional flood storage, and identifying potential opportunities to improve flood storage and water quality enhancements in collaboration with the Golf Club.

ii. Technical assessment of Zumbra Lake outlet and water level issues, including coordination with Carver County, Three Rivers Park District and affected property owners; flood analysis; and option identification.

iii. Exploration of opportunities for wetland restoration and/or enhancement of City owned wetlands on the east side of Carl Krey Lake and provisions for public access to these resources through construction of a trail connection between the neighborhoods on the north side and south side of the Lake.

iv. Coordination of efforts to address impairment of Wassermann Lake as outlined in the MCWD Lakes TMDL approved by the US EPA on April 25, 2011.

c. Regulatory Coordination and Support.

i. Coordinating land development and water resource regulatory review to promote a clear expectation of the parties' individual and joint administration responsibilities with regard to new developments with the intent of establishing joint collaboration with the development community from conception through implementation; fostering applicant integration of water and natural resource management into development planning; and allowing the District and City to explore with applicants opportunities to creatively adjust development plans to produce greater private and public benefit.

ii. Combining regulatory review for greater efficiency, lower public cost and better service to applicants. This may include formalizing a communications protocol for mutual awareness of pending or submitted applications, shared technical resources to limit costs and focus expertise, and cooperation in site compliance inspection and enforcement activities.

iii. Exploring formal partnering for cost-efficient and effective implementing of stormwater pollution prevention programs under respective NPDES MS4 permits, including construction site management, stormwater facility maintenance, housekeeping and public education and outreach.

2. Not Legally Binding. This MOU is a statement of mutual interest and cooperation. Nothing herein is legally binding. At such time as the District and City proceed to implement a specific capital project or program, or to formalize other coordination in a binding manner, they will enter into a written agreement that establishes legally binding roles, responsibilities and financial obligations.

3. Primary Contacts. The following individuals will be the primary contacts between the District and the City. Either party may change the designated contact by notifying the other party:

[insert]

4. Term. Either party may terminate this MOU upon written notice to the other party. This document should be revisited by both parties in a period of 3 years.

CITY of VICTORIA

By: Laurie Hokkanen
Laurie Hokkanen, City Manager

Date: March 24, 2015

MINNHAHA CREEK WATERSHED DISTRICT

By: Lars Erdahl
Lars Erdahl, District Administrator

Date: 3/26/2015

Attachment 2

VICTORIA CHAIN OF LAKES GREENWAY POLICY & IMPLEMENTATION

PURPOSE

Through its Land Use policies, Victoria seeks to preserve not only what is required by existing State and regional statutes, but additional high quality natural resources and open spaces. In partnership with the Minnehaha Creek Watershed District and developers, Victoria will create a contiguous network of natural area patches and corridors. This network will provide corridors for outdoor recreation, non-motorized transportation, habitat preservation and restoration, and ecosystem functions. Figure 4.9 highlights a conceptual greenway network, which includes existing and proposed parks, trail corridors, and open spaces and some upland areas that serve as critical connecting areas.

Concurrent to the 2040 Comprehensive Plan process, Minnehaha Creek Watershed District (MCWD) and the City of Victoria collaborated on a study for the future of the western growth area. The purpose of the planning process was to:

- Understand likely future development patterns
- Preserve and enhance ecologic, hydrologic and natural systems
- Balance property owner and future developer desires with City-wide objectives

The goals for the study are:

- Improve natural systems
- Improve quality of development
- Reduce public expenditure
- Reduce public conflicts
- Reduce developer time and cost of review
- Reduce risk for development
- Align Shared values between City, MCWD, land owners, home buyers and residents

WHAT DOES THE GREENWAY CORRIDOR INCLUDE?

Tier 1 includes areas that are already restricted for development by Federal, State, or Local statutes:

- Wetlands
- Open Water (Lakes, Streams)
- Floodways and Floodplains
- Hydric Soils

Tier 2 further looks at land cover and natural resources and adds the following layers:

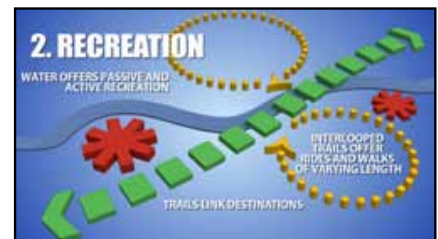
- Stream and wetland buffers
- Natural corridors and woodlands
- Steep slopes

Connective corridors that help achieve the Victoria Greenway framework by looking at Tiers 1 and 2 and connecting them to form a network of open space corridors that will benefit ecological, environmental, and recreational systems in Victoria.

Corridors link larger hubs allowing plants and animals to thrive in a functioning ecosystem.



Destination trails with a natural signature tie together a seamless system of local parks, regional parks, local trails, greenways and schools.



Buffer strips, native vegetation and land management practices improve water quality and ecosystem health.



Trails with grade separation and four-season maintenance link activity centers across the county and link a feeder system of local trails.



The Dakota County Greenway Guidebook outlines four major objectives for its greenways, shown above.

HOW IS THE GREENWAY CORRIDOR POLICY IMPLEMENTED?

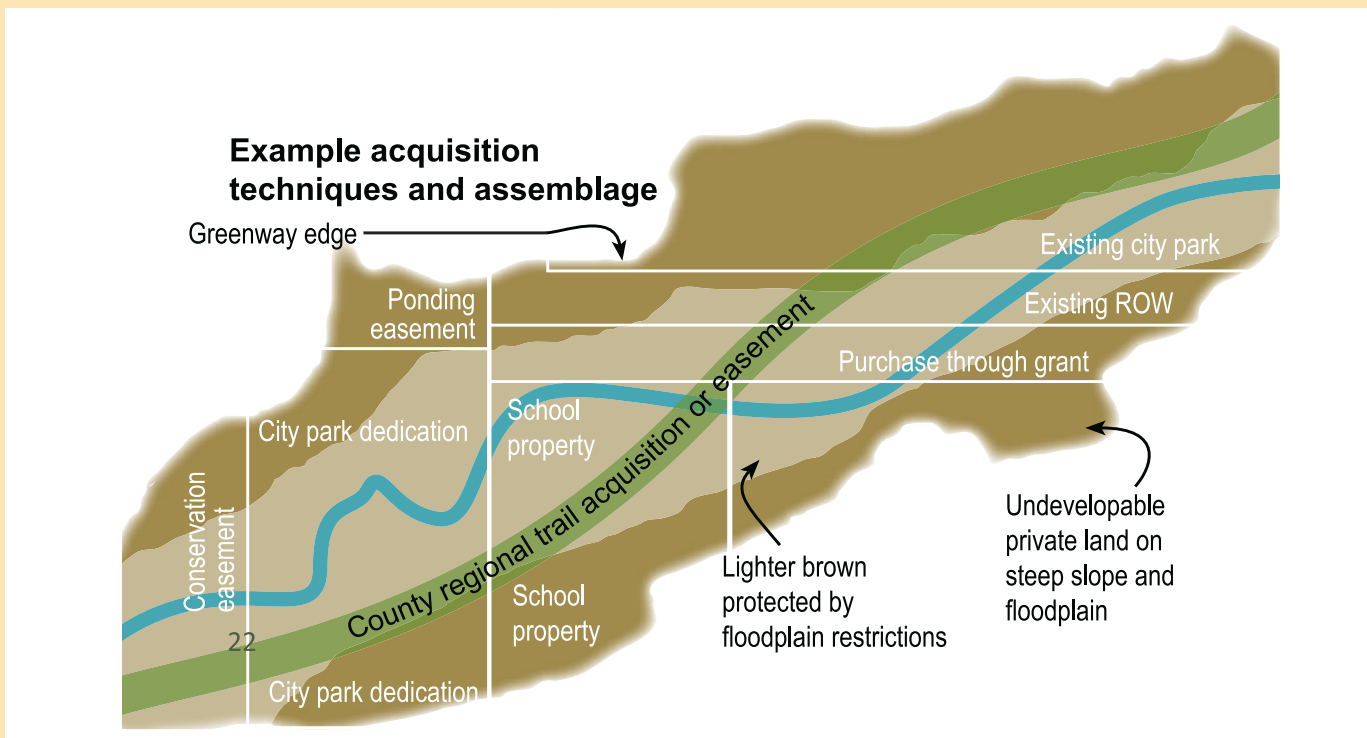
Existing development regulations protect Tier 1 items.

Tier 2 items and connective corridors will be protected through a number of different tools available to the City, County, and Watershed Districts such as:

- » City, regional, and State policies
- » Zoning overlay district
- » PUD negotiations
- » Density transfers
- » Dedication
- » Acquisition of land
- » Coordination with Landowners
- » Conservation Easements
- » Utilization of existing public land
- » Grant funding

A typical acquisition strategy for protecting greenway lands and features might utilize the following prioritization:

- 1) Use existing public land that is already secured to create corridors. No ownership change is required. Examples include existing parks, ponding areas, schools, wildlife areas and other public land.
- 2) Preserve corridors in coordination with land development. Use park dedication, ponding areas, PUDs, and subdivision requirements to assemble corridors.
- 3) Take advantage of existing land use regulations that protect open space. Public ownership may not be needed in these areas beyond the 30-foot trail easement. Examples include floodplain regulations, shore land zoning, wetland protection areas, bluff protection areas, etc.
- 4) Strategically purchase property or easements as necessary. Leverage regional, state, and federal grants and existing land conservation programs as sources of revenue and provide local match as needed. Use local funding from county and city sources without match only when all other avenues have been explored.



The connective corridor search areas identified in Figure 4.9 should be considered diagrammatic and as the name implies, search areas. It may not be necessary to protect the entire search area, but rather a portion of it, to create and preserve connectivity between existing patches of Tier 1 and 2 lands.

As opportunities arise for the preservation of lands within Tier 2 or the connective corridor search areas, the City and/or Watershed District should undertake actions to protect these natural features and connections considering the following principles of landscape ecology:

- » Bigger patches function better than smaller patches
- » Smaller patches function better than no patches
- » Patches connected with multiple connections function better than patches only connected by one connection
- » Connected patches function better than isolated patches
- » Wider corridors function better than narrower corridors
- » Continuously connected corridors function better than "stepping stone" corridors
- » "Stepping stone" corridors function better than no corridor

For more information, see "Landscape Ecology Principles in Landscape Architecture and Land-Use Planning" by Dramstad, Olson, and Forman.

WHAT IS THE IMPACT OF THE GREENWAY CORRIDOR POLICY?

In order to fully realize and continue to support The City of Lakes and Parks Vision, the Greenway Corridor Policy will provide a framework for a connected system of open areas, parks, greenways, trails, wetlands, and water bodies. By establishing a set of guidelines and strategies for growth and development early on, the implementation of the greenway corridor vision can more easily be realized.

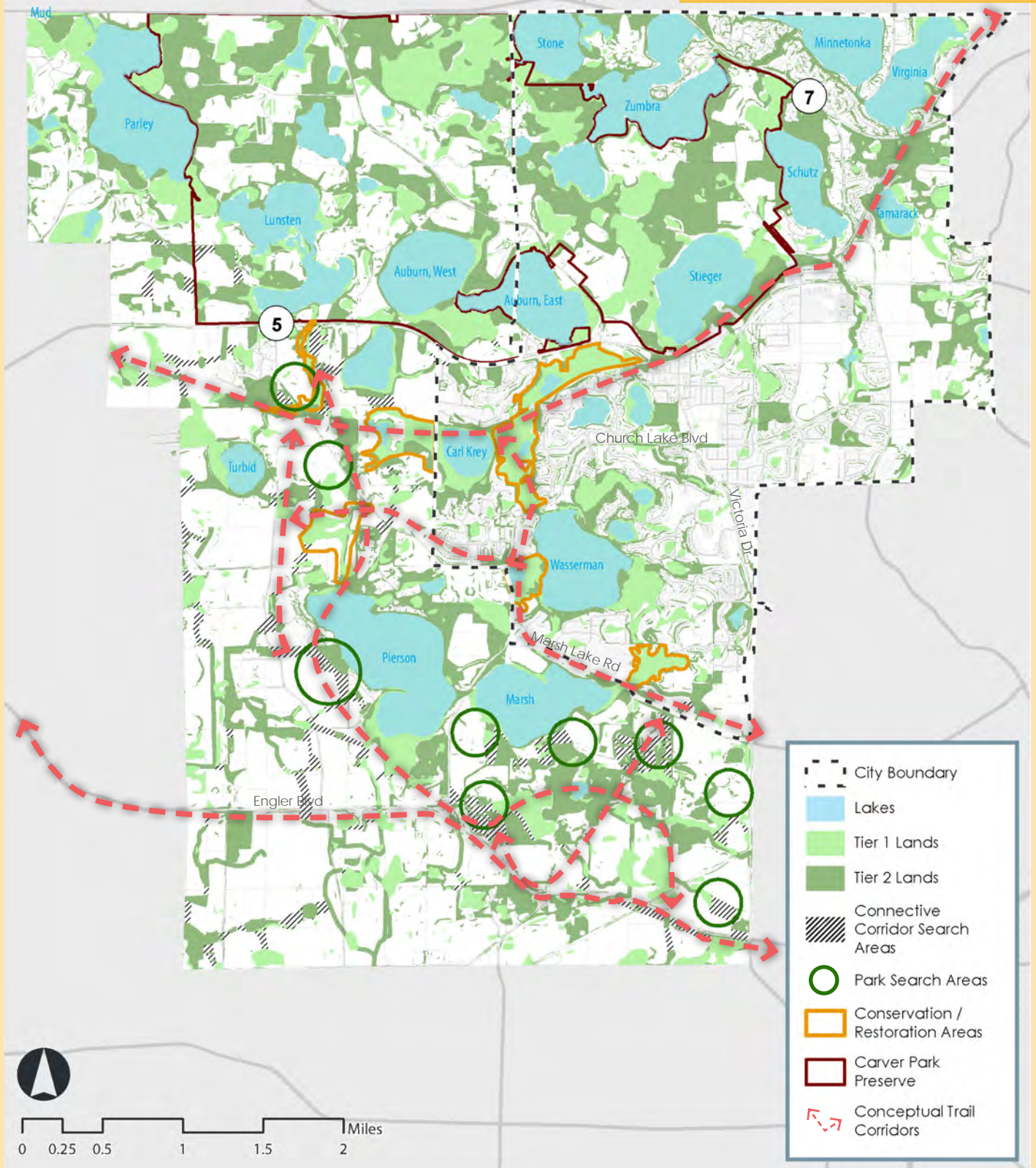


The image (left) illustrates the concept of the Connective Corridor Search Area, to connect natural features, habitat, and buffers for stormwater runoff. In some instances recreational features such as parks or trails may be able to be incorporated when the area develops.

While protecting more land leads to better ecological functioning, it may not be possible when weighed against development pressure.

In this case, it may not be necessary to protect the entire search area, instead protecting and enhancing a corridor within the search area to improve connectivity between the Tier 1 and 2 patches.

FIGURE 4.9 GREENWAY CORRIDOR



Attachment 3

SECOND MEMORANDUM of UNDERSTANDING

This Memorandum of Understanding (MOU) is made between the City of Victoria, a Minnesota municipal corporation (“City”), and the Minnehaha Creek Watershed District, a political subdivision with powers at Minnesota Statutes chapters 103B and 103D (“District”).

Recitals and Statement of Purpose

WHEREAS the City is a developing community in Carver County, in an environment of abundant natural amenities and water resources, that is expanding to the west (“western growth area”) under an orderly annexation agreement with Laketown Township;

WHEREAS District Board of Managers (“Board”) Resolution 14-009 adopts a “balanced urban ecology” approach for watershed planning and programming that recognizes the relation among sound ecological systems, well-managed water resources and healthy communities, and that rests on understanding the needs and desires of communities, to guide watershed programs and projects so as to enhance water resources while promoting community economic and social well-being;

WHEREAS this approach uses a subwatershed focus that rewards investment in a hydrologic, ecologic and land use knowledge base; allows the District to form and develop relationships with municipalities and other local partners; and fosters opportunities to integrate water resource goals with other community goals as to the built environment as well as local economic vitality, recreational assets and quality of life;

WHEREAS District Board Resolution 14-047 identifies the Six Mile Creek Halsted Bay (SMCHB) subwatershed as a District priority focus for reasons including (1) the impaired condition of Halsted Bay and numerous upstream lakes, many of which fall within the current and future boundary of Victoria, (2) anticipated growth and development activity within the subwatershed, and (3) support among local governments and lake associations;

WHEREAS on March 26, 2015, the City and District entered into a memorandum of understanding to coordinate in the District’s development of its SMCHB subwatershed implementation plan within its 2018-2027 Watershed Management Plan (WMP) revision, and the City’s corresponding local water management plan, and more generally to advance the District’s balanced urban ecology approach through early coordination of development regulation and the City’s capital programming;

WHEREAS in 2016, the District convened a multi-jurisdictional partnership including the City to advance its development of the SMCHB subwatershed implementation plan, and in 2018, by Board Resolution 18-004, adopted the 2018-2027 WMP containing an assessment of SMCHB subwatershed goals and priorities, and an implementation plan to pursue them;

WHEREAS the SMCHB subwatershed implementation plan observes that the SMCHB subwatershed is characterized by interconnected shallow lake and wetland systems, that these systems serve to export nutrients into waters and downstream to Six Mile Creek and Halsted Bay, and that the resources exhibit degraded water quality and ecological integrity;

WHEREAS the implementation plan recognizes distinct management units and identifies methods to achieve water resource goals and priorities to include rough fish management; wetland restoration;

surface runoff management; stream channel restoration; internal load treatment; and protection and restoration of wetland and riparian lands, and of natural corridors;

WHEREAS in 2017, the District and Carver County entered into a Master Finance Agreement by which the County, by use of general obligation bonds, may provide long-term capital project financing under the SMCHB implementation plan;

WHEREAS in 2019, by City Council Resolution 2019-51, the City adopted its 2040 land use plan, “Our Victoria Tomorrow,” which sets forth the City’s vision for its expansion into the western growth area, and incorporates the Victoria Chain of Lakes Greenway Policy and Implementation Plan (“Greenway Plan”), a program developed in consultation with the District that will strategically use opportunities and tools to establish corridors of high-valued natural resources both to protect the integrity of natural systems and to provide recreational and other amenity value to the community;

WHEREAS by Resolution 19-079, the District Board approved the City’s local water management plan (LWMP) in its 2040 plan, including a coordination plan encompassing City and District collaboration on land use planning, regulation, public communications and education, and alignment of plans and investments;

WHEREAS pursuant to the LWMP and Resolution 19-079, the District continues to exercise within City boundaries its authority to regulate land development, in parallel with the City’s land use regulation, and continues to implement the Minnesota Wetland Conservation Act (WCA) as the designated local government unit;

WHEREAS since the execution of the 2015 MOU, and in implementation of the WMP SMCHB subwatershed implementation plan, the City and the District, in partnership, have invested substantially in work within the Pierson-Marsh-Wassermann management unit, most upstream within the SMCHB subwatershed, bringing Wassermann Lake into conformance with Minnesota water quality standards in 2023;

WHEREAS during this time, the City and District have collaborated successfully on initiatives including:

- System-wide habitat restoration through carp management, supported by a Lessard-Sams Outdoor Heritage Council grant;
- Early land-use and regulatory coordination allowing a creative on-site wetland replacement solution by a developer;
- Enhancing treatment capacity of ponds near downtown Victoria to reduce phosphorus loading to East Auburn Lake, supported by a Clean Water Fund grant;
- Alum treatments of Wassermann West pond and Wassermann Lake, supported by a Clean Water Fund grant;
- Developing the city’s first lakeside park, Wassermann Lake Preserve, with related water quality improvements;
- Hydrologic restoration of the East Auburn Wetland, with trail improvement (in design);

WHEREAS the City and District recognize the value of their past collaboration in aligning comprehensive planning efforts, and both parties are entering into new planning cycles: the City with its 2050 comprehensive plan, and the District with its 2027 Watershed Management Plan, both aiming to further integrate water resource goals with community growth and development;

WHEREAS the City and District wish to continue their collaboration with respect to water quality and ecological integrity within the City as a whole, but with an emphasis on the relationship of natural systems to the built environment within the western growth area, in advance of annexation, public infrastructure investment, and private development activity;

WHEREAS the City and District view this coordinated effort as an opportunity to further define and showcase what it means for the City to be the “City of Lakes and Parks” by realizing the Greenway Plan vision, securing additional open space, restoring and preserving natural resources, establishing greenway networks, and orienting future development around these natural features;

WHEREAS implementing this vision ahead of development and annexation will in turn (1) improve and protect those natural systems, (2) improve the quality and long term sustainability of development, (3) provide for the wise use of public dollars, (4) reduce development risk and (5) align the shared values of the City, the District, landowners and residents;

WHEREAS the District wishes to give attention, in particular, to the Turbid-Lundsten management unit, where substantial wetland acreage has been altered or lost, and where the District has identified wetland restoration, internal load treatment, rough fish management, and acquisition of fee or easement rights in sensitive lands as promising approaches to address the impaired status of Turbid Lake, improve water quality in South Lundsten Lake, reduce phosphorus export into the SMCHB surface water system and improve the ecological quality of the lake-wetland resource;

THEREFORE this MOU documents mutual goals and affirms the cooperative framework within which the City and District will continue to explore and advance beneficial and cost-effective projects and programs.

Terms of Understanding

1. Victoria Chain of Lakes Greenway Planning and Implementation.

- a. The City and District will collaborate to refine and implement the Greenway Plan, formulating phasing and implementation strategies to guide the evaluation of opportunities and investment within the western growth area.
- b. The City and District will evaluate the use and impact of various land-use policies and their ability to serve as a strategy for Greenway Plan implementation.
- b. The District will continue to improve its understanding of water resource issues, strategies, and project opportunities within the Turbid-Lundsten corridor, and will pursue feasibility studies to explore restoration and project opportunities to address Turbid Lake’s present, and South Lundsten Lake’s anticipated, impairment status under the Clean Water Act.
- c. The District and City will coordinate as feasibility work advances within the Turbid-Lundsten management unit. The City supports potential District fee or easement acquisitions to advance water quality and ecological integrity goals in the WMP, and will consult to help guide District activity in a way that advances the Greenway Plan and otherwise comports with the City’s long-range infrastructure and land use plans for the drainage area.

d. The City will explore small-area planning to guide both public infrastructure investments and private development, engaging the District in this process to ensure shared knowledge and consideration of mutual goals.

e. As opportunities are evaluated, the District and City will seek to establish regional stormwater facilities that can serve the requirements of future development, in an effort to maximize water quality benefits and minimize long-term maintenance costs for the City.

f. The City and District will engage with key partners and stakeholders within the western growth area (e.g., Carver County, Carver SWCD, Laketown Township, Three Rivers Park District, landowners) to better understand and develop consensus around goals for public investment and land use management.

2. 10-Year Plan Coordination and Ongoing Partnership.

a. The City and District will prioritize collaboration throughout the development of the District's 2027 Watershed Management Plan and the City's 2050 comprehensive plan.

b. Both parties will seek alignment among land use planning, water resource goals, and community development, leveraging shared data, expertise, and resources to integrate these objectives within their respective plans.

c. Building on the coordination framework established in 2017, the City and District will maintain open communication regarding annexation plans, programmed capital improvements, and potential development activities.

d. The District will explore project opportunities within the broader SMCHB subwatershed, in cooperation with the City, to advance the WMP implementation plan in a manner that supports the City's land use and community development goals.

e. The City and District will continue to fulfill their commitments in engagement with the SMCHB subwatershed partnership.

f. The City and District will continue to cooperate on the continuing improvement of City maintenance, road management and other housekeeping programs; cultivating public and private partners and funding sources; coordinating and integrating capital work; and collaborating in public outreach.

3. Regulatory Program Coordination.

a. The City and District will exchange information about potential land ownership changes that may create partnering opportunities, and about potential development activity, and will direct landowners and developers accordingly, to provide for early engagement by both parties in land use events that may affect water resources.

b. The City and District will seek to coordinate development review where that will protect public interests; avoid unnecessary expense, uncertainty or delay for the landowner or developer; or enhance the opportunity to creatively adjust development plans for greater private and public benefit.

c. The City and District will consider opportunities to coordinate or formally share responsibility for permit administration, inspection, enforcement, and stormwater facility maintenance functions in order to reduce public cost and duplication; provide for more efficient fulfillment of NPDES MS4 program obligations; and provide more effectively for compliance by regulated landowners and developers.

4. Not Legally Binding. This MOU is a statement of mutual intent and cooperation, and is not legally binding. When the City and District undertake to implement a specific capital project or program, or to formalize other coordination in a binding manner, they will enter into a written agreement that establishes legally bindings roles, responsibilities and financial obligations.

5. Primary Contacts. The following individuals are the primary contacts between the City and the District. Either party may change the primary contact by notifying the other party in writing.

MCWD

Michael Hayman-Director of Project Planning
(952)-471-8226
MHayman@minnehahacreek.org

City of Victoria

Cara Geheren-City Engineer
(651)-300-4261
Cara.geheren@focusengineeringinc.com

6. Term. Either party may terminate this MOU by written notice to the other party. It is the parties' intent to revisit this MOU in five years.

CITY of VICTORIA

By: _____

Dana Hardie, City Manager

Date:

MINNEHAHA CREEK WATERSHED DISTRICT

By: _____

James Wisker, District Administrator

Date: