



**MINNEHAHA CREEK**  
**WATERSHED DISTRICT**  
QUALITY OF WATER, QUALITY OF LIFE

**Meeting:** Board of Managers  
**Meeting date:** 9/25/2025  
**Agenda Item #:** 11.2  
**Request for Board Action**

**Title:** Approval of Final Design for Twin Lakes Park Pond Maintenance and Authorization to Solicit Bids;

**Resolution number:** 25-053

**Prepared by:** Name: James McDermond-Spies  
Phone: 952-641-4513  
jmcdermontspies@minnehahacreek.org

**Reviewed by:** Name/Title: Michael Hayman, Director of Project Planning; Chuck Holtman, Smith Partners

**Recommended action:** Staff recommends the Board approves Twin Lakes Park Pond maintenance final design plans and authorizes solicitation of bids.

**Schedule:** October 2025 – Bid Selection and Approval  
November 2025 – Construction Contracting  
December 2025 – March 2026 – Conduct Maintenance work

**Budget considerations:** Fund name and code: Stormwater Pond Maintenance Dredging 3-3002-4550  
Fund budget: \$ 1,015,000  
Expenditures to date: \$ 0

**Past Board action:** Res # 23-043 Authorization to Contract for Engineering and Design Services For 2023-2024 Stormwater Pond Survey and Maintenance  
Res # 23-072 Awarding Construction Contact for 2023-24 Twin Lakes Park Pond and Nokomis-Amelia Pond Dredging  
Res # 24-060 Authorization to Terminate Minnesota Dirt Works, Inc. Contract for Twin Lakes Park Pond and Nokomis-Amelia Pond Dredging  
Res #25-041 Authorization to Contract with Stantec for Design, Bid Support, and Construction Oversight for Maintenance of Twin Lakes Pond

**Summary:**

The Minnehaha Creek Watershed District (MCWD) is responsible to inspect and maintain 26 stormwater ponds through ownership or cooperative agreements with its partner communities. The MCWD Board of Managers established a policy that guides the investigation and maintenance of its stormwater management infrastructure to ensure the long-term water quality and water quantity function of these systems.

In 2023 the MCWD completed the Stormwater Pond Data Analysis. A 20-year schedule was developed, and ponds are now selected for survey and maintenance based on historical data and a calculated sedimentation rate for each pond. This maintenance is necessary to ensure stormwater ponds are functioning as designed and continue to accrue their designed water resource benefit.

In 2023 Twin Lakes Park Pond and Nokomis-Amelia Pond were identified for need of dredging maintenance. This maintenance project was slated for the winter of 2023-2024 but was delayed and ultimately cancelled following unseasonably warm temps and additional permitting hurdles encountered at the Nokomis-Amelia Pond.

August 14, 2025 the Board approved a new contract with Stantec to separate and update plans and specifications from the 2023-2024 package, provide bid documents and support, and provide construction administration and observation for winter 2025-2026 maintenance dredging of Twin Lakes Park Pond. The 2023-2024 approved design proposed the removal of all accumulated sediments, about 3030 cubic yards(cy), and to increase the depth of the pond about two feet, an additional 480 cy, for a total of 3510 cy to be excavated. Twin Lakes Pond accumulates sediment quickly, needing sediment removal every 8-12 years and the planned increase in depth was to lengthen the maintenance interval for cost savings. This work was planned within the existing approximately 1.2-acre footprint with a single construction entrance to minimize disturbance. The Twin Lakes Pond portion of the 2023-2024 maintenance contract was \$205,488. New project plans separating Twin Lakes Pond from Nokomis have been developed (attached as supporting documents) and reviewed by staff and District counsel. The proposed plans include all the work in the previous plan set and were updated to include an additional 360 cy of sediment, that is estimated to have accumulated since the 2023-2024 contract, for a total of 3870 cy to be excavated. The opinion of probable cost for work in winter of 2025-2026 is \$368,885, which includes a 10% contingency. This significant increase in cost is driven by increases seen in the cost of removing and disposing of contaminated sediments, which are present in this project.

At the September 25, 2025, Board Meeting, Staff will seek approval of the Twin Lakes Park Pond Maintenance plans and authorization to solicit bids for the maintenance work.

**Supporting Documents (list attachments):**

- Twin Lakes Park Pond Final Project Plans



## RESOLUTION

---

**Resolution number:** 25-053

- Title:** Approval of Final Design for Twin Lake Park Pond Maintenance and Authorization to Solicit Bids;
- WHEREAS, Minnehaha Creek Watershed District (MCWD) engages in regional capital improvement projects as described in its Water Resources Management Plan;
- WHEREAS, MCWD has a policy that guides the investigation and maintenance of its stormwater management infrastructure and conducts pond sediment surveys on the 26 regional ponds that MCWD is responsible to inspect and maintain;
- WHEREAS, the Project Maintenance and Land Management Program (PMLM) annually budgets for this effort in accordance with Stormwater Pond Maintenance Capital Projects budget;
- WHEREAS, utilizing MCWD's Stormwater Pond Data Analysis, in 2023, the Board of Managers ("Board") identified Twin Lakes Park pond and Nokomis-Amelia pond for Winter 2023-24 maintenance;
- WHEREAS, maintenance work for the winter of 2023-2024 was designed and contracted but unseasonably warm weather and additional permitting hurdles specifically for the Nokomis-Amelia pond work, due to presence of Blanding's turtles, delayed work and ultimately the termination of the construction contract in November 2024;
- WHEREAS, on August 14, 2025, the Board authorized a new contract with Stantec to separate design and specifications for Twin Lakes Park Pond, provide bid documents and support, and conduct construction administration and observation;
- WHEREAS, on September 25, 2025, the Board reviewed a final design project manual and opinion of probable cost for maintenance dredging of Twin Lakes Park Pond.

NOW, THEREFORE, BE IT RESOLVED that the Minnehaha Creek Watershed District Board of Managers approves the final design for Maintenance of Twin Lakes Park Pond;

BE IT FURTHER RESOLVED that the Minnehaha Creek Watershed District Board of Managers authorizes the District Administrator, on advice of counsel, to solicit bids for work in the winter of 2025-2026.

Resolution Number 25-053 was moved by Manager \_\_\_\_\_, seconded by Manager \_\_\_\_\_. Motion to adopt the resolution \_\_\_ ayes, \_\_\_ nays, \_\_\_ abstentions. Date: 9/25/2025

\_\_\_\_\_  
Secretary Date: \_\_\_\_\_



# CONSTRUCTION PLANS

## FOR

# TWIN LAKES POND 2025-2026 MAINTENANCE

OWNER:  
MINNEHAHA CREEK WATERSHED DISTRICT



15320 MINNETONKA BLVD  
MINNETONKA, MN 553405

ENGINEER:  
STANTEC CONSULTING SERVICES INC.



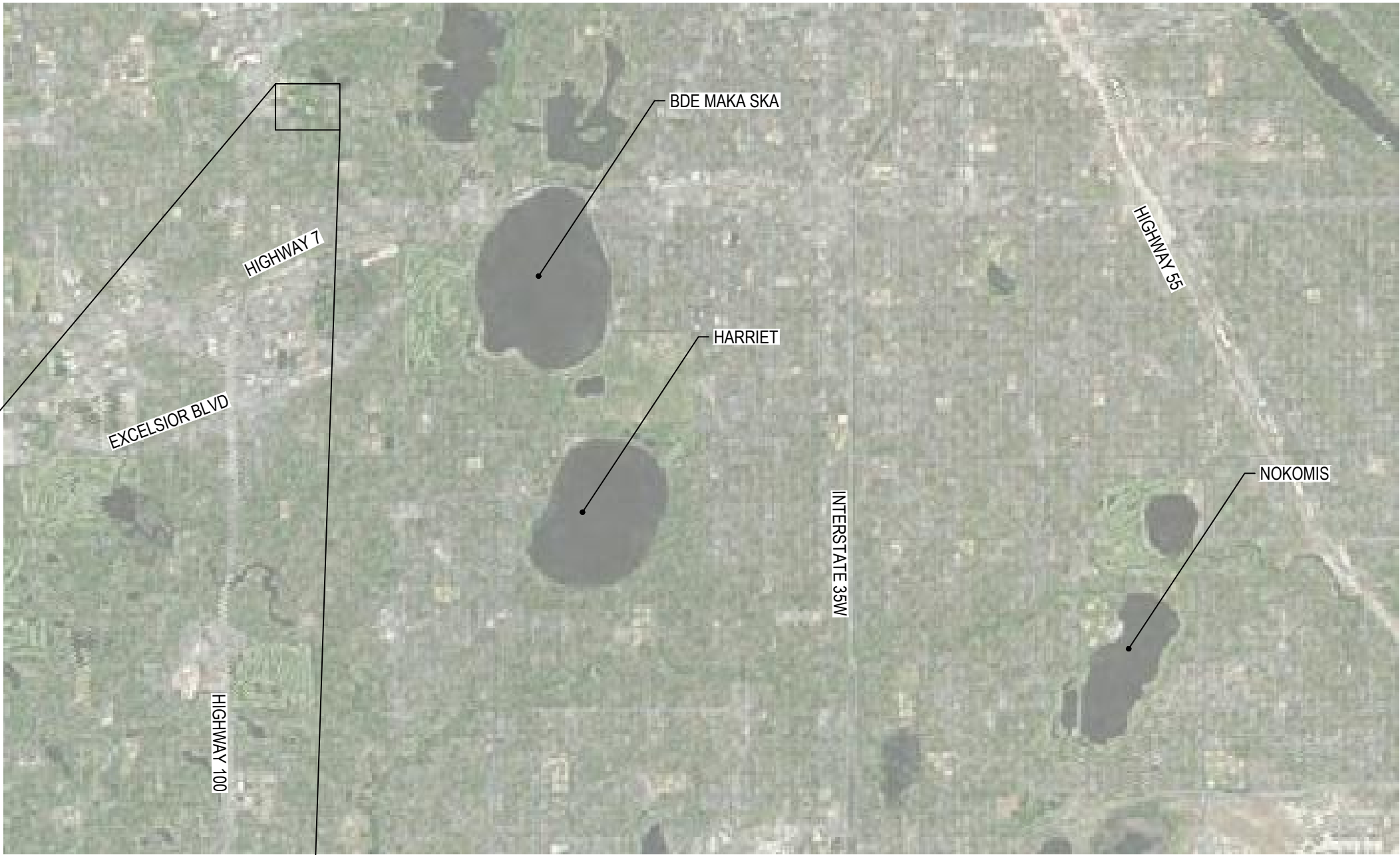
ONE CARLSON PARKWAY, SUITE 100  
PLYMOUTH, MN 55447  
CONTACT: NICK WYERS, P.E.  
PH: (952) 838-5661

**WARNING:**  
THE CONTRACTOR SHALL BE RESPONSIBLE FOR CALLING FOR LOCATIONS OF ALL EXISTING UTILITIES. THEY SHALL COOPERATE WITH ALL UTILITY COMPANIES IN MAINTAINING THEIR SERVICE AND/OR RELOCATION OF LINES.

THE CONTRACTOR SHALL CONTACT GOPHER STATE ONE CALL AT 651-454-0002 AT LEAST 48 HOURS IN ADVANCE FOR THE LOCATIONS OF ALL UNDERGROUND WIRES, CABLES, CONDUITS, PIPES, MANHOLES, VALVES OR OTHER BURIED STRUCTURES BEFORE DIGGING. THE CONTRACTOR SHALL REPAIR OR REPLACE THE ABOVE WHEN DAMAGED DURING CONSTRUCTION AT NO COST TO THE OWNER.

CALL BEFORE YOU DIG  
**GOPHER STATE ONE CALL**  
TWIN CITY AREA: 651-454-0002  
TOLL FREE 1-800-252-1166

TWIN LAKES POND  
CITY OF ST. LOUIS PARK  
HENNEPIN COUNTY, MN



PROJECT LOCATION MAP  
NOT TO SCALE



TWIN LAKES POND VICINITY MAP  
NOT TO SCALE

THIS PLAN SET CONTAINS 6 SHEETS

SHEET INDEX	
SHEET NUMBER	SHEET TITLE
G-001	COVER SHEET
G-002	GENERAL NOTES AND LEGEND
C-001	EX. CONDITIONS, REMOVALS, EROSION CONTROL PLAN
C-101	SWPPP
C-201	PROPOSED CONDITIONS
C-801	DETAILS

ONE CARLSON PARKWAY, SUITE 100  
PLYMOUTH MN, 55447  
PHONE: 763-479-4200  
FAX: 763-479-4242  
WWW.STANTEC.COM

CLIENT:

MINNEHAHA CREEK  
WATERSHED  
DISTRICT

15320 MINNETONKA BLVD  
MINNETONKA, MN 55345

PROJECT TITLE:

TWIN LAKES POND 2025-2026  
MAINTENANCE

TWIN LAKES POND, ST. LOUIS PARK  
HENNEPIN COUNTY, MINNESOTA

DATE:	DESCRIPTION:	ISSUE NO.:					
9/26/2025	ISSUED FOR BID	0					

CERTIFICATION:

I HEREBY CERTIFY THAT THIS PLAN, SPECIFICATION, OR REPORT WAS PREPARED BY ME OR UNDER MY DIRECT SUPERVISION AND THAT I AM A DULY LICENSED PROFESSIONAL ENGINEER UNDER THE LAWS OF THE STATE OF MINNESOTA.

NICK WYERS

LICENSE NO.: 57846

DATE: 10/18/2023

PROJECT NO.: 193807544

DWN BY: SMD

CHKD BY: NPW

APP'D BY: NPW

ISSUE DATE: 9/26/2025

ISSUE NO.: 0

SHEET TITLE:

COVER SHEET

SHEET NO.:

G-001



GOVERNING SPECIFICATIONS

- 1. PROJECT MANUAL FOR TWIN LAKES POND 2025-2026 MAINTENANCE.
- 2. MINNESOTA DEPARTMENT OF TRANSPORTATION (MN/DOT) "STANDARD SPECIFICATIONS FOR CONSTRUCTION" LATEST EDITION AND SUPPLEMENTS.
- 3. CITY ENGINEERS ASSOCIATION OF MINNESOTA (CEAM) STANDARD SPECIFICATIONS FOR UTILITIES LATEST EDITION.
- 4. APPLICABLE FEDERAL, STATE, AND LOCAL LAWS AND ORDINANCES

GENERAL NOTES

- 1. UNTIL REVISION BLOCK STATES "ISSUED FOR CONSTRUCTION", THE PLAN SET IS NOT CERTIFIED FOR CONSTRUCTION AND CONTRACTOR IS BUILDING AT THEIR OWN RISK.
- 2. EXISTING CONDITIONS SHOWN ARE FROM A COMBINATION OF TOPOGRAPHIC SURVEY AND LIDAR DATA COMPLETED BY STANTEC CONSULTING SERVICES, INC., DATED 08/16/2023 AND 10/24/2019. EXISTING FEATURES MAY NOT BE EXACT TO THEIR LOCATION. CONTRACTOR IS RESPONSIBLE FOR VERIFYING THE CONDITIONS OF THE SITE AND MUST IMMEDIATELY NOTIFY THE ENGINEER IN WRITING OF DISCREPANCIES OR VARIATIONS FROM THE DRAWINGS.
- 3. SUBSURFACE UTILITY INFORMATION IN THIS PLAN IS UTILITY QUALITY LEVEL D. THIS QUALITY LEVEL WAS DETERMINED ACCORDING TO THE GUIDELINES OF C/ASCE 38-2 ENTITLED "STANDARD GUIDELINES FOR THE COLLECTION AND DEPICTION OF EXISTING SUBSURFACE UTILITY DATA". EXACT LOCATION/DEPTH OF SUBSURFACE UTILITIES SUCH AS GAS, TELEPHONE, FIBER OPTIC, SEWER, WATER, PIPELINES, ELECTRICAL, AND CABLE TV ARE UNKNOWN AND THE INFORMATION IS NOT TO BE RELIED ON AS BEING EXACT OR COMPLETE.
- 4. CONTRACTOR RESPONSIBLE FOR CONTACTING GOPHER STATE ONE CALL (1-800-252-1166) A MINIMUM OF 48 HOURS IN ADVANCE (EXCLUDING HOLIDAYS AND WEEKENDS) BEFORE STARTING WORK FOR LOCATIONS OF UNDERGROUND UTILITIES.
- 5. CONTRACTOR SHALL ANTICIPATE PRIVATE UTILITY CONFLICTS THROUGHOUT THE PROJECT SUB CUT AND TRENCH AREAS AND MUST COORDINATE THE RELOCATION OR PROTECTION OF EXISTING UTILITIES, OR INSTALLATION OF NEW UTILITIES WITH UTILITY OWNERS THAT MAY HAVE BURIED OR AERIAL UTILITIES WITHIN OR NEAR THE CONSTRUCTION AREA BEFORE STARTING WORK. COSTS FOR SUCH WORK, INCLUDING EXTRA TIME AND EFFORT FOR PROVISIONS NECESSARY TO WORK AROUND OR UNDER UTILITIES, IS THE RESPONSIBILITY OF THE CONTRACTOR WITH NO ADDITIONAL COST TO THE OWNER. FEES OR CHARGES WHICH ARE TO BE PAID TO THE UTILITY COMPANY, INCLUDING WORK THAT MUST BE PERFORMED BY THE UTILITY COMPANY, ARE AT NO ADDITIONAL COST TO THE OWNER.
- 6. QUANTITIES ARE APPROXIMATE, AND MAY VARY TO ALLOW COMPLETION OF WORK.
- 7. WORK AND MATERIALS MUST COMPLY WITH CITY, COUNTY, STATE, AND FEDERAL (INCLUDING OSHA) REGULATIONS AND CODES.
- 8. CONTRACTOR SHALL COORDINATE WORK WITH OTHER CONTRACTORS PERFORMING WORK AT OR NEAR THE SITE.
- 9. CONTRACTOR SHALL COORDINATE AND MAINTAIN ACCESS TO ADJACENT PROPERTIES THROUGHOUT CONSTRUCTION.
- 10. CONTRACTOR SHALL COORDINATE AND MAINTAIN MAIL, GARBAGE, AND RECYCLING SERVICES TO PROPERTIES THROUGHOUT CONSTRUCTION.
- 11. CONTRACTOR SHALL COORDINATE AND MAINTAIN STORMWATER DRAINAGE CONVEYANCE THROUGHOUT CONSTRUCTION (BOTH PIPED AND OVERLAND FLOW).
- 12. CONTRACTOR SHALL COORDINATE AND MAINTAIN UTILITY SERVICES TO ADJACENT PROPERTIES AT ALL TIMES. UTILITY SERVICE MUST NOT BE INTERRUPTED WITHOUT APPROVAL FROM OWNER, CITY, AND ADJACENT PROPERTIES.
- 13. CONSTRUCTION LIMITS ARE TO PROPERTY LINE UNLESS SHOWN OR NOTED OTHERWISE. CONTRACTOR SHALL RESTRICT CONSTRUCTION ACTIVITIES TO AREAS DESIGNATED ON PLANS WITHIN THE CONSTRUCTION LIMITS.
- 14. CONTRACTOR SHALL PRESERVE AND PROTECT EXISTING PAVEMENT, SITE FEATURES, UTILITIES, TREES, ETC., UNLESS NOTED OR SHOWN OTHERWISE.
- 15. CONTRACTOR SHALL PHOTO OR VIDEO DOCUMENT EXISTING CONDITIONS OF TREES AND PLANTINGS, ADJOINING CONSTRUCTION, SURFACES, AND SITE IMPROVEMENTS, ETC. TO REMAIN THAT MIGHT BE MISCONSTRUED AS DAMAGE CAUSED BY CONSTRUCTION OPERATIONS. SUBMIT TO ENGINEER AND OWNER BEFORE CONSTRUCTION BEGINS. USE ADEQUATELY DETAILED PHOTOGRAPHS OR VIDEO RECORDINGS. INCLUDE PLANS AND NOTATIONS TO INDICATE SPECIFIC EXISTING DAMAGE CONDITIONS OF ITEMS DESIGNATED TO REMAIN. ANY DAMAGE TO THE EXISTING PAVEMENT, CURBING, STRIPING, OR OTHER SITE FEATURE TO REMAIN MUST BE REPLACED BY THE CONTRACTOR, TO OWNER'S SATISFACTION, AT NO ADDITIONAL COST TO THE OWNER.
- 16. CONTRACTOR SHALL TAKE ALL PRECAUTIONS NECESSARY TO AVOID PROPERTY DAMAGE TO ADJACENT PROPERTIES DURING CONSTRUCTION AND WILL BE HELD SOLELY RESPONSIBLE FOR ANY DAMAGES.
- 17. CONTRACTOR MUST IMMEDIATELY NOTIFY THE OWNER AND ENGINEER IN WRITING OF DISCREPANCIES OR CONFLICTS IN THE CONTRACT DOCUMENTS BEFORE COMMENCING WORK. NO FIELD CHANGES OR DEVIATIONS ARE TO BE MADE WITHOUT PRIOR WRITTEN APPROVAL FROM THE ENGINEER. FAILURE TO NOTIFY OWNER AND ENGINEER OF AN IDENTIFIABLE CONFLICT BEFORE PROCEEDING WITH INSTALLATION RELIEVES OWNER AND ENGINEER OF ANY OBLIGATION TO PAY FOR A RELATED CHANGE ORDER.
- 18. CONTRACTOR SHALL HAVE ONE COPY OF EACH REQUIRED CONSTRUCTION PERMIT AND ONE COPY OF THE MOST CURRENT AND COMPLETE SET OF CONSTRUCTION DOCUMENTS (INCLUDING PLANS, SPECIFICATIONS, GEOTECHNICAL REPORT, SPECIAL CONDITIONS AND PROVISIONS, ETC.) AVAILABLE AT THE PROJECT SITE AT ALL TIMES.
- 19. CONTRACTOR SHALL BE FULLY RESPONSIBLE FOR IMPLEMENTATION AND ENFORCEMENT OF SAFE WORK PRACTICES, INCLUDING BUT NOT LIMITED TO PERSONNEL MONITORING, USE OF TRENCHING, SHEETING, AND SHORING, SCAFFOLDING, MATERIALS HANDLING AND DRILLING; OPERATION OF EQUIPMENT; AND SAFETY OF PUBLIC DURING PROGRESS OF WORK.
- 20. CONTRACTOR SHALL PLAN FOR AND ENSURE PERSONNEL COMPLY WITH PROVISIONS OF OSHA SAFETY AND HEALTH STANDARDS (29 CFR 1910) AND GENERAL CONSTRUCTION STANDARDS (29 CFR 1926) AS APPROPRIATE.
- 21. CONTRACTOR SHALL BE RESPONSIBLE FOR INITIATING, MAINTAINING, AND SUPERVISING SAFETY PRECAUTIONS AND PROGRAMS IN CONNECTION WITH WORK. CONTRACTOR SHALL TAKE NECESSARY PRECAUTIONS FOR SAFETY OF EMPLOYEES ON PROJECT SITE AND OTHER PERSONS AND ORGANIZATIONS WHO MAY BE AFFECTED BY THE PROJECT. CONTRACTOR'S DUTIES AND RESPONSIBILITIES FOR SAFETY IN CONNECTION WITH WORK SHALL CONTINUE UNTIL SUCH TIME AS ALL WORK IS COMPLETED, AND ENGINEER HAS ISSUED NOTICE TO CONTRACTOR THAT WORK IS COMPLETE.
- 22. HAZARDOUS MATERIALS, INCLUDING BUT NOT LIMITED TO OIL, GASOLINE, PAINT AND OTHER HAZARDOUS SUBSTANCES MUST BE PROPERLY STORED, BY THE CONTRACTOR, INCLUDING SECONDARY CONTAINMENTS, TO PREVENT SPILLS, LEAKS OR OTHER DISCHARGE. RESTRICTED ACCESS TO STORAGE AREAS MUST BE PROVIDED TO PREVENT VANDALISM. STORAGE AND DISPOSAL OF HAZARDOUS WASTE MUST BE IN COMPLIANCE WITH MCPA REGULATIONS. CONTRACTOR SHALL REMOVE SPILL OF FUELS, OILS, OR OTHER CHEMICALS IMMEDIATELY UPON DETECTION.

HORIZONTAL AND VERTICAL CONTROL NOTES

- 1. THE HORIZONTAL CONTROL FOR THIS PLAN IS NAD83 HENNEPIN COUNTY COORDINATES SYSTEM US FOOT.
- 2. THE VERTICAL CONTROL FOR THIS PLAN IS NAVD88.

REMOVAL / DEMOLITION NOTES

- 1. SEE GENERAL NOTES FOR ADDITIONAL PROJECT AND SITE INFORMATION.
- 2. CONTRACTOR SHALL OBTAIN PERMITS REQUIRED FOR DEMOLITION, REMOVAL AND DISPOSAL.
- 3. CONTRACTOR SHALL REVIEW FEATURES NOT SPECIFICALLY IDENTIFIED ON PLAN FOR SALVAGE OR REMOVAL THAT CONFLICT WITH CONSTRUCTION WITH THE ENGINEER.
- 4. MATERIALS REMOVED/DEMOLISHED BY CONTRACTOR BECOME PROPERTY OF THE CONTRACTOR. UNLESS OTHERWISE NOTED, CONTRACTOR SHALL LOAD AND HAUL MATERIAL OFF-SITE AND PROPERLY DISPOSE OF MATERIALS IN ACCORDANCE WITH APPLICABLE REGULATIONS. CONTRACTOR MUST LEAVE THE SITE IN A CONDITION TO THE SATISFACTION OF THE OWNER AND ENGINEER.
- 5. CONTRACTOR SHALL COORDINATE UTILITY REMOVAL WORK WITH APPROPRIATE UTILITY OWNER.
- 6. CONTRACTOR SHALL SALVAGE AND REINSTALL STREET AND TRAFFIC SIGNS IN CONFLICT WITH CONSTRUCTION ACTIVITIES AS NOTED OR AS DIRECTED BY ENGINEER. IF SIGNS ARE DAMAGED DURING CONSTRUCTION, CONTRACTOR REQUIRED TO PROVIDE NEW SIGNS AT NO ADDITIONAL COST TO THE OWNER.
- 7. CONTRACTOR SHALL SALVAGE AND REINSTALL FENCE IN CONFLICT WITH CONSTRUCTION ACTIVITIES AS NOTED OR AS DIRECTED BY ENGINEER. IF FENCE IS DAMAGED DURING CONSTRUCTION, CONTRACTOR REQUIRED TO PROVIDE NEW FENCE, TO OWNER'S SATISFACTION, AT NO ADDITIONAL COST TO THE OWNER.
- 8. IN THE EVENT THAT UNKNOWN CONTAINERS OR TANKS ARE ENCOUNTERED, THE CONTRACTOR MUST CONTACT THE ENGINEER IMMEDIATELY. ALL CONTAINERS OR TANKS MUST BE DISPOSED OF PROPERLY AT A REGULATED/PERMITTED FACILITY.
- 9. CONTRACTOR SHALL REVIEW ALL TREE REMOVALS WITH THE OWNER AND ENGINEER PRIOR TO REMOVAL OPERATIONS.
- 10. CLEARING AND GRUBBING OPERATIONS MUST COMPLY WITH THE FOLLOWING:
  - A. PROTECT ALL TREES AND PLANTS NOT DESIGNATED FOR REMOVAL.
  - B. CONDUCT OPERATIONS IN SUCH A MANNER THAT DOES NOT DAMAGE PROTECTED TREES AND VEGETATION.
  - C. CUT, REMOVE, AND DISPOSE OF TREES, BRUSH, SHRUBS, WINDFALLS, LOGS, STUMPS, ROOTS, FALLEN TIMBER, AND OTHER VEGETATION.
  - D. BACKFILL DEPRESSIONS WITH NATIVE SOILS OR SUITABLE FILL MATERIAL AS REQUIRED BY DESIGN OR AS DIRECTED BY THE GEOTECHNICAL ENGINEER AND COMPACT BACKFILL AS DIRECTED.
  - E. DISPOSE OF DEBRIS IN ACCORDANCE WITH APPLICABLE REGULATIONS.
  - F. CONSIDER BENEFICIAL USE DESIGNATIONS FOR UNADULTERATED WOOD, WOOD CHIPS, BARK AND SAWDUST.
  - G. NO BURYING OF CLEARED AND GRUBBED WASTE WITHIN THE CONSTRUCTION LIMITS.

TRAFFIC CONTROL NOTES

- 1. SEE GENERAL NOTES FOR ADDITIONAL PROJECT AND SITE INFORMATION.
- 2. CONTRACTOR SHALL COORDINATE CONSTRUCTION STAGING, ON OR OFFSITE, AS NECESSARY TO COMPLETE THE WORK. IF OFFSITE STAGING AREA IS REQUIRED, CONTRACTOR IS RESPONSIBLE TO FIND, OBTAIN, AND PAY FOR NECESSARY STAGING AREA AT NO ADDITIONAL COST TO THE OWNER. SUBMIT A STAGING PLAN TO THE ENGINEER FOR REVIEW BEFORE STARTING WORK.
- 3. CONTRACTOR RESPONSIBLE FOR ALL TRAFFIC CONTROL AND DETOURS. TRAFFIC CONTROL AND DETOURS MUST BE IN ACCORDANCE WITH THE LATEST EDITION OF THE MN MUTCD, INCLUDING LATEST FIELD MANUAL FOR TEMPORARY TRAFFIC CONTROL ZONE LAYOUTS. SUBMIT TRAFFIC CONTROL PLAN AND DETOUR PLAN TO CITY AND ENGINEER FOR REVIEW BEFORE CONSTRUCTION RELATED ACTIVITIES. PLANS MUST COMPLY WITH APPLICABLE PERMIT REQUIREMENTS.

EROSION CONTROL NOTES

- 1. SEE GENERAL NOTES FOR ADDITIONAL PROJECT AND SITE INFORMATION.
- 2. CONTRACTOR SHALL CONFORM TO AND CONDUCT INSPECTIONS IN ACCORDANCE WITH THE NPDES PERMIT REQUIREMENTS.
- 3. BEFORE SITE DISTURBANCE AND AS REQUIRED AS CONSTRUCTION PROGRESSES, CONTRACTOR SHALL INSTALL, MAINTAIN, REPAIR, AND REPLACE EROSION PREVENTION MEASURES AND SEDIMENT CONTROL DEVICES (INLET PROTECTION, CONSTRUCTION ENTRANCE, SILT FENCE, EROSION CONTROL BLANKET, ETC.) IN ACCORDANCE WITH THE NPDES PERMIT, AND CITY, STATE, AND WATERSHED DISTRICT PERMITS.
- 4. ADDITIONAL EROSION CONTROL MEASURES MAY BE REQUIRED DEPENDING ON SITE CONDITIONS DURING CONSTRUCTION. COORDINATE WITH ENGINEER.
- 5. CONTRACTOR SHALL STABILIZE ALL EXPOSED SOIL AREAS WITHIN THE CONSTRUCTION LIMITS WITHIN 7 DAYS AFTER THE CONSTRUCTION ACTIVITY IN THAT PORTION OF THE SITE THAT HAS TEMPORARILY (WILL NOT RESUME FOR A PERIOD EXCEEDING 14 CALENDAR DAYS) OR PERMANENTLY CEASED. STABILIZATION MUST BE INITIATED PROMPTLY.
- 6. CONTRACTOR SHALL REMOVE ANY SEDIMENT THAT HAS TRACKED ONTO PAVED SURFACES BOTH ON AND OFFSITE WITHIN 24 HOURS AND AS DIRECTED BY CITY, OWNER, AND/OR ENGINEER. SWEEP STREET IN ACCORDANCE WITH CITY AND NDPEs PERMIT REQUIREMENTS.
- 7. CONTRACTOR SHALL MINIMIZE DUST FROM CONSTRUCTION OPERATIONS BY PROVIDING WATER OR OTHER APPROVED METHOD ON A DAILY BASIS.
- 8. CONTRACTOR SHALL PHASE GRADING WORK TO MINIMIZE THE DURATION THAT DISTURBED SOIL IS EXPOSED.
- 9. CONTRACTOR SHALL PROVIDE/INSTALL DIVERSION DITCHES, SEDIMENT BASINS, AND OTHER EROSION PROTECTION/SEDIMENT CONTROL MEASURES AS NECESSARY DURING INTERIM PROJECT CONDITIONS (NOT SHOWN ON PLANS) TO MANAGE/DIVERT STORM WATER AWAY FROM SITE FEATURES AND CONTROL EROSION/SEDIMENT. CONTRACTOR SHALL ADJUST MEASURES AS NECESSARY THROUGHOUT PROJECT PHASING.
- 10. CONTRACTOR SHALL LOCATE SOIL STOCKPILES NO LESS THAN 50 FEET FROM ROADWAYS, STORMWATER INLETS, PONDS, WETLANDS, DRAINAGE CHANNELS, AND OTHER SURFACE WATERS. IF REMAINING FOR MORE THAN 7 DAYS, STABILIZE THE STOCKPILES BY MULCHING, VEGETATED COVER, TARPS, OR OTHER MEANS IN ACCORDANCE WITH THE NPDES PERMIT. PLACE PERIMETER SEDIMENT CONTROLS AROUND STOCKPILES TO CONTROL EROSION. COVER TEMPORARY STOCKPILES LOCATED ON PAVED SURFACES IF LEFT FROM MORE THAN 24 HOURS.
- 11. CONTRACTOR SHALL REMOVE ALL EROSION CONTROL MEASURES AFTER SITE HAS BEEN STABILIZED AND VEGETATION IS ESTABLISHED AS DIRECTED BY ENGINEER. EROSION CONTROL MEASURES USED FOR CONSTRUCTION MUST NOT BE REMOVED UNTIL AUTHORIZED BY OWNER OR ENGINEER.
- 12. SOIL PREPARATION: PREPARE SOIL IN ACCORDANCE WITH MN/DOT SPECS 2574, PART 3.A.4 SOIL BED PREPARATION AND PART 3.A.5 SUBSOILING.

DEWATERING NOTES

- 1. CONTRACTOR SHALL ANTICIPATE GROUND WATER. A BID ITEM HAS BEEN PROVIDED FOR ALL DEWATERING WORK NECESSARY FOR CONSTRUCTION.
- 2. CONTRACTOR SHALL OBTAIN APPLICABLE REQUIRED PERMITS (INCLUDING MN DNR WATER APPROPRIATION PERMIT) AND SUBMIT DEWATERING PLAN TO ENGINEER FOR REVIEW. DEWATERING MUST MEET PERMIT REQUIREMENTS AND BE ACCEPTED BEFORE STARTING CONSTRUCTION ACTIVITIES.
- 3. CONTRACTOR MUST DEWATER IN ACCORDANCE WITH THE PROJECT SWPPP AND NPDES PERMIT.
- 4. CONTRACTOR MUST DISCHARGE TURBID OR SEDIMENT-LADEN WATER RELATED TO DEWATERING OR BASIN DRAINING (E.G. PUMPED DISCHARGES, TRENCH/DITCH CUTS FOR DRAINAGE) TO A TEMPORARY OR PERMANENT SEDIMENTATION BASIN ON THE PROJECT SITE UNLESS INFEASIBLE. CONTRACTOR MAY DISCHARGE FROM THE TEMPORARY OR PERMANENT SEDIMENTATION BASINS TO THE SURFACE WATERS IF THE BASIN WATER HAS BEEN VISUALLY CHECKED TO ENSURE ADEQUATE TREATMENT HAS BEEN OBTAINED IN THE BASIN AND THAT NUISANCE CONDITIONS (SEE MINNESOTA RULES CHAPTER 7050.0210, SUBPART 2) WILL NOT RESULT FROM THE DISCHARGE. IF THE WATER CANNOT BE DISCHARGED TO A SEDIMENTATION BASIN PRIOR TO ENTERING THE SURFACE WATER, IT MUST BE TREATED WITH THE APPROPRIATE BMPs (E.G. SILT BAGS), SUCH THAT THE DISCHARGE DOES NOT ADVERSELY AFFECT THE RECEIVING WATER OR GREASE, THE CONTRACTOR MUST USE AN OIL-WATER SEPARATOR OR SUITABLE FILTRATION DEVICE (E.G. CARTRIDGE FILTERS, ABSORBENTS PADS) PRIOR TO DISCHARGING THE WATER. THE CONTRACTOR MUST ENSURE THAT DISCHARGE POINTS ARE ADEQUATELY PROTECTED FROM EROSION AND SCOUR. THE DISCHARGE MUST BE DISPERSED OVER NATURAL ROCK RIPRAP, SANDBAGS, PLASTIC SHEETING, OR OTHER ACCEPTED ENERGY DISSIPATION MEASURES.
- 5. CONTRACTOR MUST DISCHARGE WATER FROM DEWATERING OR BASIN-DRAINING ACTIVITIES IN A MANNER THAT DOES NOT CAUSE NUISANCE CONDITIONS, EROSION IN RECEIVING CHANNELS OR ON DOWN SLOPE PROPERTIES, OR INUNDATION IN WETLANDS CAUSING SIGNIFICANT ADVERSE IMPACT TO THE WETLAND.
- 6. IF THE CONTRACTOR IS USING FILTERS WITH BACKWASH WATER, THE CONTRACTOR MUST HAUL THE BACKWASH WATER AWAY FOR DISPOSAL, RETURN THE BACKWASH WATER TO THE BEGINNING OF THE TREATMENT PROCESS, OR INCORPORATE THE BACKWASH WATER INTO THE SITE IN A MANNER THAT DOES NOT CAUSE EROSION. THE CONTRACTOR MAY DISCHARGE BACKWASH WATER TO THE SANITARY SEWER IF PERMISSION IS GRANTED BY THE SANITARY SEWER AUTHORITY. THE CONTRACTOR MUST REPLACE AND CLEAN THE FILTER MEDIA USED IN DEWATERING DEVICES WHEN REQUIRED TO RETAIN ADEQUATE FUNCTION.

TREE PRESERVATION NOTES

- 1. CONTRACTOR SHALL PROTECT EXISTING TREES THAT ARE NOT TO BE REMOVED. INSTALL ORANGE MESH FENCING, 4 FEET HIGH, WITH STAKES EVERY 10 FEET, 5 FEET OUTSIDE OF THE DRIP LINE OF PRESERVED TREES, OR AT THE CONSTRUCTION LIMITS. DO NOT PERFORM ACTIONS WITHIN THE PROTECTED AREA THAT MAY HARM THE TREE AND COMPACT THE SOIL, INCLUDING EXCAVATION, STORING MATERIALS, PARKING AND TRAFFIC DURING CONSTRUCTION. WHERE CONSTRUCTION REQUIRES DISTURBANCE WITHIN THE PROTECTED AREAS, DISTURB THE ROOT ZONE AS LITTLE AS POSSIBLE.
- 2. TREE PROTECTION MEASURES/FENCING MUST BE IN PLACE PRIOR TO BEGINNING CONSTRUCTION AND MUST BE REVIEWED BY OWNER AND ENGINEER BEFORE STARTING CONSTRUCTION.
- 3. WHEN TREE ROOTS ARE ENCOUNTERED THAT MUST BE REMOVED, CONTRACTOR SHALL CUT ROOTS CLEANLY AS FAR FROM THE TREE AS POSSIBLE AND IMMEDIATELY WATER AND BACKFILL OVER THE ROOTS TO PREVENT DRYING.

EROSION CONTROL LEGEND

	CONSTRUCTION ACCESS ROUTE AND STAGING AREA
	MUD MAT CONSTRUCTION ENTRANCE
	SEED MIX 21-112, SEED MIX 33-261, AND STRAW MULCH
	SEED MIX 25-151 AND CATEGORY 25 EROSION CONTROL BLANKET
	RIPRAP
	SILT FENCE
	BIOLOG
	FLOTATION SILT CURTAIN
	INLET PROTECTION

GRADING LEGEND

	PROPOSED MINOR CONTOUR
	PROPOSED MAJOR CONTOUR
	GRADING LIMITS
	CONSTRUCTION LIMITS
	FINISHED GRADE SPOT ELEVATION
	EMERGENCY OVERFLOW SPOT ELEVATION

EXISTING CONDITIONS LEGEND

	EXISTING PROPERTY LINE
	EXISTING FENCE LINE
	EXISTING STORM SEWER
	EXISTING FORCEMAIN
	EXISTING WATERMAIN
	EXISTING UNDERGROUND GAS LINE
	EXISTING UNDERGROUND COMMUNICATION LINE
	EXISTING UNDERGROUND FIBER OPTIC LINE
	EXISTING UNDERGROUND ELECTRIC LINE
	EXISTING OVERHEAD UTILITY LINE
	EXISTING EDGE OF PAVEMENT
	EXISTING EDGE OF GRAVEL
	EXISTING ROAD CENTERLINE
	EXISTING DITCH CENTERLINE
	EXISTING TREE LINE
	EXISTING WETLAND BOUNDARY
	EXISTING CONCRETE SURFACE
	EXISTING ASPHALT SURFACE
	EXISTING GRAVEL SURFACE
	PROTECT EXISTING TRAIL
	EXISTING MINOR CONTOUR
	EXISTING MAJOR CONTOUR
	EXISTING WATERMAIN
	EXISTING SANITARY MANHOLE
	EXISTING STORM SEWER MANHOLE
	EXISTING FLARED END SECTION
	EXISTING HYDRANT
	EXISTING WATER VALVE
	EXISTING WATER METER
	EXISTING GAS MARKER
	EXISTING GAS VALVE
	EXISTING GAS METER
	EXISTING COMMUNICATIONS PEDESTAL
	EXISTING TELEPHONE MANHOLE
	EXISTING ELECTRICAL PEDESTAL
	EXISTING ELECTRIC METER
	EXISTING TRANSFORMER
	EXISTING ELECTRIC MANHOLE
	EXISTING SIGN
	EXISTING UTILITY POLE
	EXISTING ANCHOR CABLE
	EXISTING LIGHT POLE
	EXISTING DECIDUOUS TREE
	EXISTING CONIFEROUS TREE
	EXISTING MAILBOX
	EXISTING HAND HOLE

ONE CARLSON PARKWAY, SUITE 100  
PLYMOUTH MN, 55447  
PHONE: 763-479-4200  
FAX: 763-479-4242  
WWW.STANTEC.COM

CLIENT:

MINNEHAHA CREEK  
WATERSHED  
DISTRICT

15320 MINNETONKA BLVD  
MINNETONKA, MN 55345

TWIN LAKES POND 2025-2026  
MAINTENANCE

TWIN LAKES POND, ST. LOUIS PARK  
HENNEPIN COUNTY, MINNESOTA

PROJECT TITLE:

ISSUE NO.:  
0

DATE: 9/26/2025

DESCRIPTION:  
ISSUED FOR BID

DATE: 9/26/2025

DESCRIPTION:  
ISSUED FOR BID

CERTIFICATION:

I HEREBY CERTIFY THAT THIS PLAN, SPECIFICATION, OR REPORT WAS PREPARED BY ME OR UNDER MY DIRECT SUPERVISION AND THAT I AM A DULY LICENSED PROFESSIONAL ENGINEER UNDER THE LAWS OF THE STATE OF MINNESOTA.

NICK WYERS

LICENSE NO.: 57846

DATE: 09/26/2025

PROJECT NO.: 193807544

DWN BY: SMD    CHKD BY: NPW    APP'D BY: NPW

ISSUE DATE: 9/26/2025

ISSUE NO.: 0

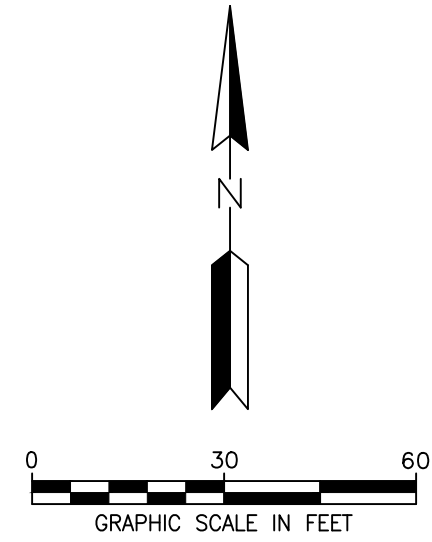
SHEET TITLE:

GENERAL NOTES AND LEGEND

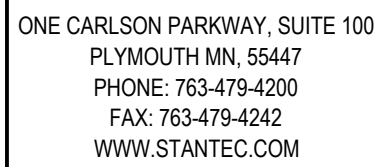
SHEET NO.:  
G-002

\\us2425-ppfs01\shared\_projects\193807544\grading\05 - DESIGN\1\_CAD\3 PLANS\SHEETS\193807544-G002.dwg





1. SEE SHEET G-002 FOR ADDITIONAL PROJECT NOTES
2. CONTRACTOR TO PROVIDE STORMWATER BYPASS FROM POND INLET TO POND OUTLET AS NECESSARY, AS WEATHER CONDITIONS DICTATE.
3. CONTRACTOR TO PROVIDE EROSION CONTROL BLANKET ON ALL SLOPES ABOVE NWL GREATER THAN 4:1 SLOPE UPON FINAL EXCAVATION FOR POND SIDE. SLOPE RESTORATION.
4. ALL STOCKPIILING MUST TAKE PLACE WITHIN EXCAVATED POND FOOTPRINT.
5. CONTRACTOR TO SUBMIT HAUL ROUTE TO OWNER 72 HOURS PRIOR TO CONSTRUCTION ACTIVITY.
6. CONTRACTOR MAY USE EXISTING TRAIL FOR ACCESS TO POND CLEANOUT. CONTRACTOR IS REQUIRED TO PROTECT THE TRAIL AND ANY DAMAGE CAUSED BY CONSTRUCTION ACTIVITIES SHALL BE REPAIRED AT THE CONTRACTORS EXPENSE.



CLIENT:

MINNEHAHA CREEK  
WATERSHED  
DISTRICT

15320 MINNETONKA BLVD  
MINNETONKA , MN 55345



**TWIN LAKES POND 2025-2026  
MAINTENANCE**

TWIN LAKES POND, ST. LOUIS PARK  
HENNEPIN COUNTY, MINNESOTA

**PROJECT TITLE:**

[illegible]

**CERTIFICATION:**

I HEREBY CERTIFY THAT THIS PLAN,  
SPECIFICATION, OR REPORT WAS  
PREPARED BY ME OR UNDER MY  
DIRECT SUPERVISION AND THAT I AM A  
DULY LICENSED PROFESSIONAL  
ENGINEER UNDER THE LAWS OF THE  
STATE OF MINNESOTA.

---

NICK WYERS

LICENSE NO.: 57846

DATE: 09/26/2025

PROJECT NO.:	193807544
--------------	-----------

DWN BY:	CHK'D BY:	APP'D BY:
---------	-----------	-----------

SMD	NI W	NI W
ISSUE DATE:		0/26/2025

ISSUE NO : 0

SHEET TITLE:

## KEY CONDITIONS REMOVALS

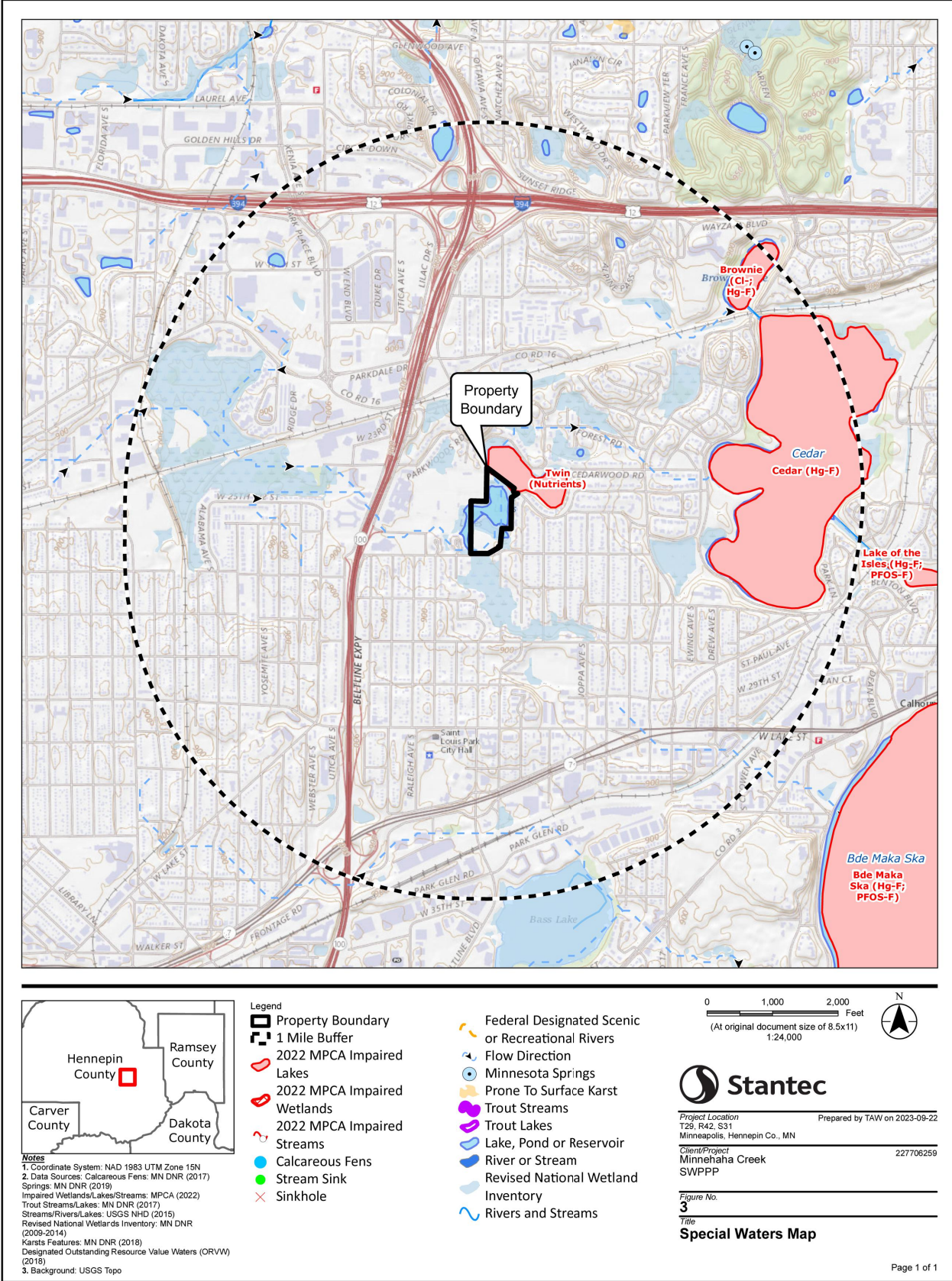
EROSION CONTROL PLAN

SHEET NO.:

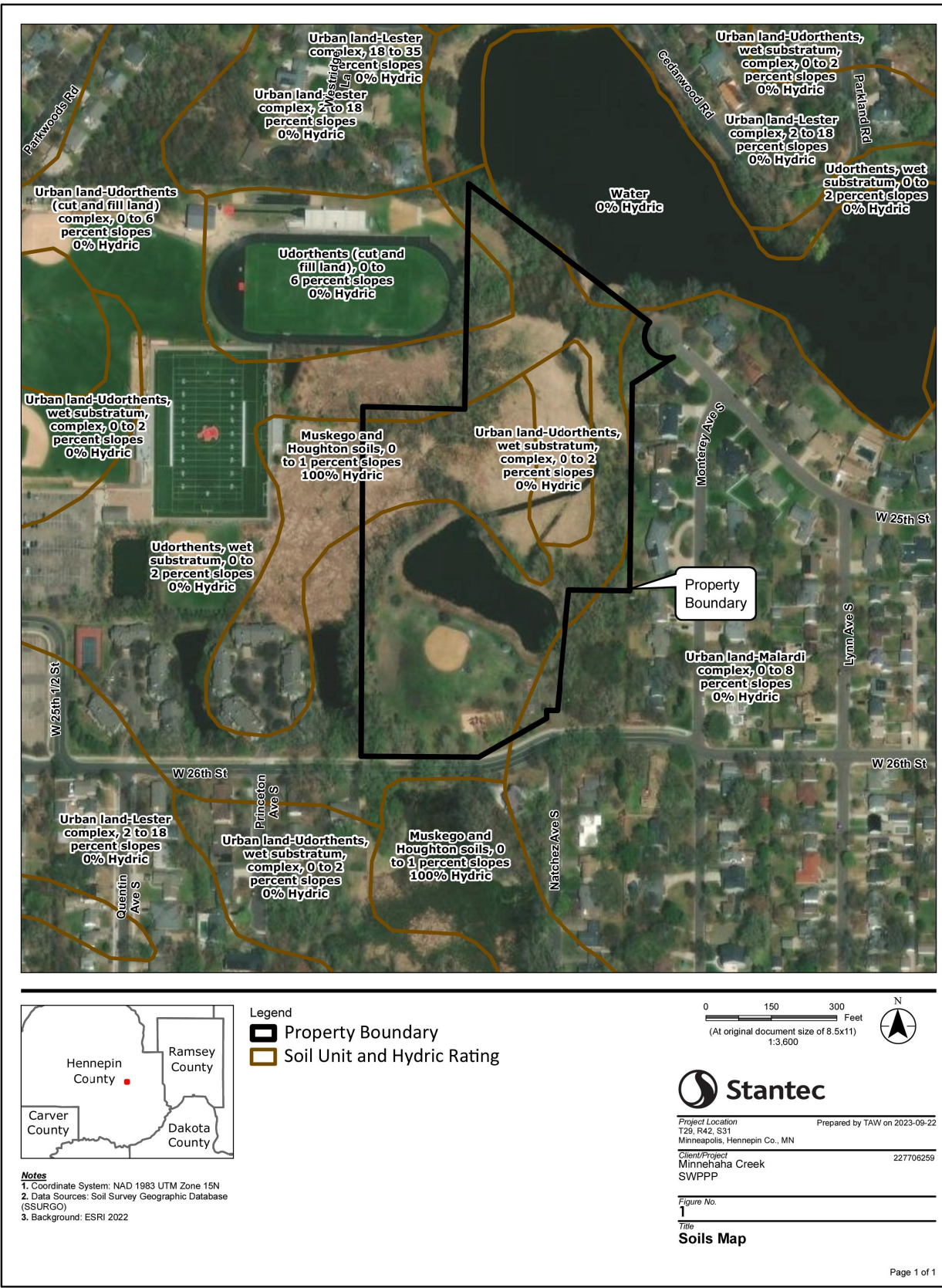
C-001



IMPAIRED WATERS MAP



SOIL MAP



PROJECT INFORMATION

PROJECT NAME: TWIN LAKES POND 2025-2026 MAINTENANCE  
PROJECT LOCATION: ST. LOUIS PARK, MN  
PROJECT TYPE: DREDGING OF STORMWATER PONDS  
TOTAL AREA DISTURBED BY CONSTRUCTION: APPROXIMATELY 1.2 ACRES. THE TOTAL SITE AREA IS APPROXIMATELY 26.68 ACRES.

ESTIMATED CONSTRUCTION DATES: WINTER 2025 - SPRING 2026  
CUMULATIVE IMPERVIOUS SURFACE/PERMANENT STORMWATER MANAGEMENT REQUIREMENTS:  
THE PROPOSED PROJECT RESULTS IN A  $\pm 0.0$  ACRE NET INCREASE/DECREASE IN IMPERVIOUS SURFACE WITHIN THE LIMITS OF DISTURBANCE.

TWIN LAKES POND ULTIMATELY DRAINS TO TWIN LAKE, WHICH IS LISTED AS AN IMPAIRED WATER FOR AQUATIC RECREATION. THERE ARE CURRENT APPROVED TMDLS FOR THE WATERBODY FOR NUTRIENTS.

THERE IS NO PERMANENT STORMWATER MANAGEMENT REQUIRED AS PART OF THIS PROJECT

PARTY RESPONSIBLE FOR LONG TERM OPERATION AND MAINTENANCE OF THE SITE (OWNER): MINNEHAHA CREEK WATERSHED DISTRICT  
CONTACT: JAMES McDERMOND-SPIES  
CONTACT PHONE: 952-641-4513  
CONTACT EMAIL: JMCDERMONDSPIES@MINNEHAHACREEK.ORG  
PARTY RESPONSIBLE FOR IMPLEMENTATION OF THE SWPPP (CONTRACTOR): TBD  
CONTRACTOR: TBD  
CONTRACTOR PHONE: TBD  
CONTRACTOR EMAIL: TBD

CONTRACTOR SHALL PROVIDE A CHAIN OF RESPONSIBILITY WITH ALL OPERATORS ON THE SITE FOR INCORPORATION INTO THIS SWPPP DOCUMENT TO ENSURE THAT THE SWPPP WILL BE IMPLEMENTED AND STAY IN EFFECT UNTIL THE CONSTRUCTION PROJECT IS COMPLETE (THROUGH FINAL STABILIZATION AND NOT SUBMITTAL). CONTRACTOR SHALL ALSO PROVIDE DOCUMENTATION OF PERSONNEL TRAINING IN ACCORDANCE WITH THE PERMIT FOR INCORPORATION INTO THIS SWPPP DOCUMENT AS SOON AS THE PERSONNEL FOR THE PROJECT HAVE BEEN DETERMINED. CONTRACTOR IS RESPONSIBLE FOR KEEPING A FINAL SWPPP DOCUMENT, CONTAINING THE INFORMATION REQUIRED ABOVE, AT THE CONSTRUCTION SITE FOR THE DURATION OF THE PROJECT.

SWPPP DOCUMENTS

THE SWPPP IS COMPOSED OF, BUT NOT LIMITED TO, THE BELOW PROJECT DOCUMENTS. THESE DOCUMENTS SHALL BE KEPT ON THE PROJECT SITE AT ALL TIMES THROUGHOUT CONSTRUCTION. THE SWPPP SHALL BE AMENDED BY THE PERSON RESPONSIBLE TO INCLUDE ANY DOCUMENTS NECESSARY TO ENSURE ADHERENCE TO THE GENERAL PERMIT.

TWIN LAKES POND 2025-2026 MAINTENANCE CIVIL CONSTRUCTION DRAWINGS BY STANTEC DATED SEPTEMBER 22, 2025

RECORD RETENTION - THE SWPPP, ALL CHANGES TO IT, AND INSPECTION AND MAINTENANCE RECORDS MUST BE KEPT ON-SITE DURING CONSTRUCTION; THE CONSTRUCTION DRAWINGS ARE INCORPORATED HEREIN BY REFERENCE, AND A COPY OF THE PLAN SET SHOULD BE KEPT ON-SITE WITH THE SWPPP RECORDS. THE OWNER MUST RETAIN A COPY OF THE SWPPP ALONG WITH THE FOLLOWING RECORDS FOR THREE (3) YEARS AFTER SUBMITTAL OF THE NOTICE OF TERMINATION:  
1. ANY OTHER PERMITS REQUIRED FOR THE PROJECT;  
2. RECORDS OF ALL INSPECTION AND MAINTENANCE CONDUCTED DURING CONSTRUCTION;  
3. ALL PERMANENT OPERATIONS AND MAINTENANCE AGREEMENTS THAT HAVE BEEN IMPLEMENTED, INCLUDING ALL RIGHT OF WAY, CONTRACT, COVENANTS AND OTHER BINDING REQUIREMENTS REGARDING PERPETUAL MAINTENANCE; AND  
4. ALL REQUIRED CALCULATIONS FOR DESIGN OF THE TEMPORARY AND PERMANENT STORMWATER MANAGEMENT SYSTEMS.

INSPECTIONS

THE INSPECTION LOG WILL BE COMPLETED BY THE CONTRACTOR FOR THE CONSTRUCTION SITE. INSPECTOR(S): TBD - TRAINING DOCUMENTATION (PER SECTION 21.2 OF THE PERMIT) WILL BE INCORPORATED INTO THIS SWPPP AS SOON AS THE PERSONNEL FOR THE PROJECT HAVE BEEN DETERMINED. THE CONTRACTOR WILL MAKE CORRECTIONS OR REPAIRS REQUIRED TO COMPLY WITH THE PERMIT.

INSPECTIONS AT THE SITE WILL BE COMPLETED IN ACCORDANCE WITH THE PERMIT AS FOLLOWS:  
ONCE EVERY SEVEN (7) DAYS DURING ACTIVE CONSTRUCTION AND,  
WITHIN 24 HOURS AFTER A RAINFALL EVENT GREATER THAN 0.5 INCHES IN 24 HOURS.

- THE INDIVIDUAL PERFORMING INSPECTIONS MUST BE TRAINED AS REQUIRED BY SECTION 21.3 OF THE PERMIT. TRAINING DOCUMENTATION SHALL BE PROVIDED BY THE CONTRACTOR FOR INCORPORATION INTO THE SWPPP. INSPECTIONS MUST INCLUDE STABILIZED AREAS, EROSION PREVENTION AND SEDIMENT CONTROL BMPS, AND INFILTRATION AREAS. CORRECTIVE ACTIONS MUST BE IDENTIFIED AND DATE OF CORRECTION MUST BE NOTED AS IDENTIFIED IN SECTION 11.11 OF THE PERMIT. ANY OFFSITE DISCHARGE MUST BE DOCUMENTED AS IDENTIFIED IN SECTION 11.11 OF THE PERMIT. ANY AMENDMENTS TO THE SWPPP PROPOSED AS A RESULT OF THE INSPECTION MUST BE DOCUMENTED WITHIN SEVEN (7) CALENDAR DAYS. AN INSPECTION LOG IS ALSO ATTACHED; THE INSPECTION LOG AND SWPPP MUST BE KEPT ON-SITE FOR THE DURATION OF THE CONSTRUCTION PROJECT.  
AT A MINIMUM, THE FOLLOWING SHALL BE COMPLETED DURING EACH INSPECTION:  
-RECORD DATE AND TIME OF INSPECTION.  
-RECORD RAINFALL RECORDS SINCE THE MOST RECENT INSPECTION.  
-INSPECT THE SITE FOR EXCESS EROSION AND SEDIMENTATION.  
-INSPECT THE SITE FOR DEBRIS, TRASH, AND SPILLS.  
-INSPECT TEMPORARY EROSION AND SEDIMENTATION CONTROL DEVICES.  
-INSPECT CONSTRUCTION ENTRANCES FOR SEDIMENT TRACKING ONTO PUBLIC STREETS.  
-RECORD RECOMMENDED REPAIRS AND MODIFICATIONS TO EROSION AND SEDIMENT CONTROLS.  
-RECOMMEND ANY NECESSARY CHANGES TO THIS SWPPP.  
-RECORD REPAIRS AND MODIFICATIONS IMPLEMENTED SINCE PREVIOUS INSPECTIONS.  
-INSPECT THE ADJACENT STREETS AND CURB AND GUTTER FOR SEDIMENT, LITTER, AND CONSTRUCTION DEBRIS.

THE GENERAL CONTRACTOR MUST UPDATE THE SWPPP, INCLUDING THE JOBSITE BINDER AND SITE MAPS, TO REFLECT THE PROGRESS OF CONSTRUCTION ACTIVITIES AND GENERAL CHANGES TO THE PROJECT SITE. UPDATES SHALL BE MADE DAILY TO TRACK PROGRESS WHEN ANY OF THE FOLLOWING ACTIVITIES OCCUR: BMP INSTALLATION, MODIFICATION OR REMOVAL, CONSTRUCTION ACTIVITIES (E.G. PAVING, SEWER INSTALLATION, ETC), CLEARING, GRUBBING, GRADING, OR TEMPORARY AND PERMANENT STABILIZATION.

THE CONTRACTOR MAY UPDATE OR MODIFY THE SWPPP WITHOUT ENGINEER APPROVAL IN AN EMERGENCY SITUATION TO PREVENT SEDIMENT DISCHARGE OR PROTECT WATER QUALITY. THE CONTRACTOR IS ULTIMATELY RESPONSIBLE TO ENSURE COMPLIANCE WITH THE PERMIT AND PROTECTION OF DOWNSTREAM WATER QUALITY.

EROSION AND SEDIMENT CONTROL

PRIOR TO ANY SITE DISTURBANCE, AND AS REQUIRED AS CONSTRUCTION PROGRESSES, ANY PERMIT REQUIRED EROSION PREVENTION MEASURES AND THE SEDIMENT CONTROL DEVICES (CONSTRUCTION ENTRANCE, EROSION CONTROL BLANKET, AND BIOLOG) SHOWN ON THE CONSTRUCTION DRAWINGS WILL BE INSTALLED AT THE SITE.

ALL EXPOSED SOIL AREAS, INCLUDING STOCKPILES, WITHIN THE CONSTRUCTION LIMITS WILL BE STABILIZED WITHIN 7 DAYS AFTER THE CONSTRUCTION ACTIVITY IN THAT PORTION OF THE SITE HAS TEMPORARILY (WILL NOT RESUME FOR A PERIOD EXCEEDING 7 CALENDAR DAYS) OR PERMANENTLY CEASED. STABILIZATION WILL BE INITIATED IMMEDIATELY. EXPOSED SOIL AREAS MUST HAVE TEMPORARY EROSION PROTECTION (SLASH MULCH, EROSION CONTROL BLANKET, SEED) OR PERMANENT COVER YEAR ROUND.

CONTRACTOR SHALL IMPLEMENT APPROPRIATE CONSTRUCTION PHASING, VEGETATIVE BUFFER STRIPS, HORIZONTAL SLOPE GRADING, AND OTHER CONSTRUCTION PRACTICES THAT MINIMIZE EROSION WHEN PRACTICAL. THE NORMAL WETTED PERIMETER OF ANY TEMPORARY OR PERMANENT DRAINAGE DITCH THAT DRAINS WATER FROM A CONSTRUCTION SITE, OR DIVERTS WATER AROUND A SITE, MUST BE STABILIZED WITHIN 200 LINEAL FEET FROM THE PROPERTY EDGE, OR FROM THE POINT OF DISCHARGE TO ANY SURFACE WATER. STABILIZATION MUST BE COMPLETED WITHIN 24 HOURS OF CONNECTING TO A SURFACE WATER. PIPE OUTLETS MUST BE PROVIDED WITH TEMPORARY OR PERMANENT ENERGY DISSIPATION WITHIN 24 HOURS OF CONNECTION TO A SURFACE WATER.

- SWPPP IMPLEMENTATION, PHASING, AND SEQUENCE OF CONSTRUCTION:  
BMP AND EROSION CONTROL INSTALLATION SEQUENCE SHALL BE AS FOLLOWS:
- CONSTRUCT STABILIZED CONSTRUCTION ENTRANCE AND INSTALL SILT FENCE.
  - INSTALL INLET PROTECTION AT EXISTING STORMWATER CULVERTS AND INLETS.
  - PREPARE TEMPORARY STORAGE, PARKING, AND PHASING AREAS.
  - PERFORM CLEARING AND GRUBBING OF THE SITE, IF APPLICABLE.
  - PERFORM POND DREDGING TO ESTABLISH PROPOSED DRAINAGE PATTERNS.
  - BEGIN EXCAVATION OF PERMANENT STORMWATER BASIN AREAS. SEE SEQUENCING BELOW FOR ADDITIONAL INFORMATION.
  - TEMPORARILY SEED WITH PURE LIVE SEED THROUGHOUT CONSTRUCTION. DISTURBED AREAS THAT WILL BE INACTIVE FOR 7 DAYS OR MORE AS REQUIRED BY NPDES OR PERMIT.

SEDIMENT CONTROL PRACTICES MUST MINIMIZE SEDIMENT FROM ENTERING SURFACE WATERS, INCLUDING CURB AND GUTTER SYSTEMS AND STORM SEWER INLETS. THE FOLLOWING MEASURES WILL BE TAKEN AS SEDIMENT CONTROL PRACTICES IN ORDER TO MINIMIZE SEDIMENTS FROM ENTERING SURFACE WATERS:

- INSTALLATION OF SEDIMENT CONTROL PRACTICES ON ALL DOWN GRADIENT PERIMETERS PRIOR TO LAND DISTURBING ACTIVITIES.
- SILT FENCING, BIOLOGS, OR OTHER SEDIMENT CONTROL SURROUNDING TEMPORARY SOIL STOCKPILES.
- VEHICLE TRACKING BMP AT CONSTRUCTION SITE ENTRANCE/EXIT. STREET SWEEPING SHALL BE PERFORMED IF VEHICLE TRACKING BMPS ARE NOT ADEQUATE TO PREVENT SEDIMENT TRACKING. TRACKED SEDIMENT MUST BE REMOVED FROM ALL PAVED SURFACES BOTH ON AND OFFSITE WITHIN 24 HOURS OF DISCOVERY PER THE PERMIT.
- STREET SWEEPING IS NOT TO BE USED AS A PRIMARY BMP FOR SEDIMENT TRACKING. IF SEDIMENT IS TRACKED OFFSITE, WORK WILL CEASE UNTIL PROPER EROSION CONTROL AND SEDIMENT CONTROL DEVICES ARE INSTALLED AND/OR BEING MAINTAINED TO PREVENT TRACKING BEYOND THE SITE'S PERIMETER (CONTAINMENT AREA). ALL STREET SWEEPING MUST BE PERFORMED UTILIZING A PICK-UP SWEEPER. IF NECESSARY WATER WILL ALSO BE USED TO CLEAN UP THE STREETS PRIOR TO BEING SWEEPED TO ENSURE THEY ARE FULLY CLEANED.

THE FOLLOWING GUIDELINES WILL BE USED TO DETERMINE IF POLLUTION CONTROL DEVICES REQUIRE MAINTENANCE, REPAIR, OR REPLACEMENT:  
-IF SEDIMENT CONTROL DEVICES SUCH AS SILT FENCE ARE FILLED TO 1/3 THE HEIGHT OF THE FENCE, REMOVE ALL SEDIMENT WITHIN 24 HOURS OF DETECTION OR NOTIFICATION.  
-IF INLET PROTECTION DEVICES APPEAR PLUGGED WITH SEDIMENT, ARE FILLED TO 1/3 CAPACITY, OR HAVE STANDING WATER AROUND THEM, REMOVE THE SEDIMENT AND CLEAN OR REPLACE THE FILTER WITHIN 24 HOURS OF DETECTION OR NOTIFICATION.  
-IF THE GRAVEL CONSTRUCTION ENTRANCE(S) ARE FILLED WITH SEDIMENT EITHER REPLACE THE ENTRANCE OR ADD ADDITIONAL GRAVEL WITH 24 HOURS OF DETECTION OR NOTIFICATION.  
-IF SEDIMENT FROM THE SITE IS OBSERVED ON ADJACENT STREETS OR OTHER PROPERTIES, THE INSPECTOR SHALL IDENTIFY THE SOURCE AND DISCHARGE LOCATION OF THE SEDIMENT AND INSTRUCT TO IMPLEMENT ADDITIONAL EROSION AND SEDIMENT CONTROLS AT THOSE LOCATIONS TO PREVENT FUTURE DISCHARGES.  
-IF BUILDING MATERIALS, CHEMICALS, OR GENERAL REFUSE IS BEING USED, STORED, DISPOSED OF, OR OTHERWISE MANAGED INAPPROPRIATELY, CORRECT SUCH DEFECTS WITHIN 24 HOURS OF DETECTION OR NOTIFICATION.  
-IF EXCESSIVE SEDIMENTS OR DEBRIS ARE OBSERVED AT THE FLARED END SECTION OUTFALLS, THE INSPECTOR SHALL DETERMINE THE SOURCE AND DISCHARGE LOCATIONS OF SUCH MATERIALS. IF THE DISCHARGE HAS OCCURRED ON THE PROPERTY, REMOVE THE SEDIMENTS AND DEBRIS WITHIN 24 HOURS OF NOTIFICATION AND CORRECT THE SOURCE OF SUCH MATERIALS AS DIRECTED BY THE INSPECTOR

POLLUTION PREVENTION MEASURES

SOLID WASTE:  
SOLID WASTE, INCLUDING BUT NOT LIMITED TO, COLLECTED ASPHALT AND CONCRETE MILLINGS, FLOATING DEBRIS, PAPER, PLASTIC, FABRIC, CONSTRUCTION AND DEMOLITION DEBRIS AND OTHER WASTE, INCLUDING ALL TRASH ONSITE, MUST BE REGULARLY DISPOSED OF PROPERLY AND MUST COMPLY WITH MPCA DISPOSAL REQUIREMENTS.

HAZARDOUS MATERIALS:  
HAZARDOUS MATERIALS, INCLUDING BUT NOT LIMITED TO OIL, GASOLINE, PAINT AND ANY HAZARDOUS SUBSTANCE MUST BE PROPERLY STORED INCLUDING SECONDARY CONTAINMENTS, TO PREVENT SPILLS, LEAKS OR OTHER DISCHARGE. RESTRICTED ACCESS TO STORAGE AREAS MUST BE PROVIDED TO PREVENT VANDALISM. STORAGE AND DISPOSAL OF HAZARDOUS WASTE MUST BE IN COMPLIANCE WITH MPCA REGULATIONS.

CONSTRUCTION EQUIPMENT/VEHICLES:  
EXTERNAL WASHING OF TRUCKS AND OTHER CONSTRUCTION VEHICLES MUST BE LIMITED TO A DEFINED AREA OF THE SITE. RUNOFF MUST BE CONTAINED AND WASTE PROPERLY DISPOSED OF. NO ENGINE DEGREASING IS ALLOWED ON SITE. REASONABLE STEPS TO PREVENT THE DISCHARGE OF SPILLED OR LEAKED CHEMICALS SHALL BE TAKEN. ADEQUATE SUPPLIES MUST BE AVAILABLE AT ALL TIMES TO CLEAN UP DISCHARGED MATERIALS; CONDUCT FUELING IN A CONTAINED AREA UNLESS INFEASIBLE.

CONCRETE WASHOUT AREA:  
CONCRETE WASHOUT WILL BE PERMITTED ON-SITE; CONTRACTOR SHALL FOLLOW ALL PERMIT REQUIREMENTS FOR CONCRETE WASHOUT. THE CONTRACTOR SHALL PROVIDE EFFECTIVE CONTAINMENT FOR ALL LIQUID AND SOLID WASTES GENERATED BY WASHOUT OPERATIONS. LIQUID AND SOLID WASHOUT WASTES MUST NOT CONTACT THE GROUND AND THE CONTAINMENT MUST BE DESIGNED TO PROHIBIT RUNOFF FROM THE WASHOUT OPERATIONS/AREAS. LIQUID AND SOLID WASTES MUST BE DISPOSED OF PROPERLY AND IN COMPLIANCE WITH MPCA RULES. A SIGN MUST BE INSTALLED ADJACENT TO EACH WASHOUT FACILITY THAT REQUIRES SITE PERSONNEL TO UTILIZE THE PROPER FACILITIES FOR CONCRETE WASHOUT AND DISPOSAL OF WASHOUT WASTES. CONTRACTOR SHALL REVISE SWPPP TO INDICATE WASHOUT LOCATION ONCE THE LOCATION HAS BEEN DETERMINED.

FERTILIZERS AND LANDSCAPE MATERIALS MUST BE UNDER COVER TO PREVENT THE DISCHARGE OF POLLUTANTS OR PROTECTED BY SIMILARLY EFFECTIVE MEANS DESIGNED TO MINIMIZE CONTACT WITH STORMWATER.

PORTABLE TOILETS MUST BE POSITIONED SO THAT THEY ARE SECURE AND WILL NOT BE TIPPED OR KNOCKED OVER. SANITARY WASTE MUST BE DISPOSED OF PROPERLY.

GENERAL SWPPP NOTES

DEWATERING IS ANTICIPATED TO BE REQUIRED DURING POND DREDGING. CONTRACTOR SHALL COMPLY WITH PERMIT SECTION 10.1 REQUIREMENTS FOR DEWATERING. CONTRACTOR MUST NOT CAUSE NUISANCE CONDITIONS (MINN. R. 7050.0210, SUBP. 2) IN SURFACE WATERS FROM DEWATERING DISCHARGES. PERMITTEES MUST DISCHARGE TURBID OR SEDIMENT-LADEN WATERS RELATED TO DEWATERING OR BASIN DRAINING TO A SEDIMENT CONTROL (E.G. SEDIMENT TRAP OR BASIN, FILTER BAG) DESIGNED TO PREVENT DISCHARGES WITH VISUAL TURBIDITY. CONTRACTOR MUST DISCHARGE ALL WATER FROM DEWATERING ACTIVITIES IN A MANNER THAT DOES NOT CAUSE EROSION OR SCOUR IN THE IMMEDIATE VICINITY OF DISCHARGE POINTS OR INUNDATION OF WETLANDS IN THE IMMEDIATE VICINITY OF DISCHARGE POINTS THAT CAUSES SIGNIFICANT ADVERSE IMPACT TO THE WETLAND, (MINN. R. 7090). IF NUISANCE CONDITIONS RESULT FROM THE DISCHARGE, CONTRACTOR MUST CEASE DEWATERING IMMEDIATELY AND CORRECTIVE ACTIONS MUST OCCUR BEFORE DEWATERING IS RESUMED.

THIS SWPPP SHALL BE AMENDED BY THE CONTRACTOR IN ACCORDANCE WITH THE PERMIT AS NECESSARY TO INCLUDE ADDITIONAL REQUIREMENTS, TO CORRECT PROBLEMS IDENTIFIED, OR TO ADDRESS SITUATIONS PER SECTION 6.1 OF THE PERMIT.

THE PROJECT WILL NOT DISTURB MORE THAN 5 ACRES THAT PROMOTE DRAINAGE TO A COMMON LOCATION, THEREFORE A TEMPORARY SEDIMENT BASIN WILL NOT BE REQUIRED.

FINAL STABILIZATION:  
ALL PREVIOUS AREAS DISTURBED BY CONSTRUCTION AS DESIGNATED WILL RECEIVE VEGETATIVE COVER ACCORDING TO THE PLANS AND SPECIFICATIONS AND WITHIN THE SPECIFIED VEGETATIVE TIME SCHEDULE. FINAL STABILIZATION WILL OCCUR WHEN THE SITE HAS A UNIFORM VEGETATIVE COVER WITH A DENSITY OF 90% OVER THE RESTORED PREVIOUS AREAS. ALL TEMPORARY SYNTHETIC EROSION PREVENTION AND SEDIMENT CONTROL BMPS (SUCH AS SILT FENCE) MUST BE REMOVED AS PART OF THE SITE FINAL STABILIZATION. ALL SEDIMENT MUST BE CLEANED OUT OF CONVEYANCES AND TEMPORARY SEDIMENTATION BASINS IF APPLICABLE. NOTICE OF TERMINATION (NOT) MUST BE SUBMITTED WITHIN 30 DAYS OF FINAL STABILIZATION.

IMPAIRED WATERS, SPECIAL WATERS, AND WETLANDS

THIS PROJECT IS LOCATED WITHIN ONE MILE OF, AND ULTIMATELY DISCHARGES TO AN IMPAIRED WATER. TWIN LAKE IS LOCATED NORTHEAST OF THE PROJECT LOCATION AND IS LISTED AS IMPAIRED FOR AQUATIC RECREATION. THERE ARE CURRENT APPROVED TMDLS FOR THE WATER BODY FOR NUTRIENTS. DISCHARGE TO AN IMPAIRED WATER REQUIRES IMPLEMENTATION OF SECTION 23.1 OF THE PERMIT AS INCORPORATED INTO THIS SWPPP DOCUMENT.

THE PROJECT WILL NOT IMPACT WETLANDS. 0 SF OF WETLANDS WILL BE MITIGATED AS PART OF THIS PROJECT.

SITE SOILS - SITE SOILS ARE SHOWN ON THIS SHEET. THIS PROJECT IS NOT LOCATED IN A KARST AREA.

ESTIMATED BMP QUANTITIES AND INSTALLATION SCHEDULE

THE ADJACENT TABLE INDICATES THE ESTIMATED MATERIAL QUANTITIES NECESSARY TO IMPLEMENT THE TEMPORARY AND PERMANENT EROSION PREVENTION AND SEDIMENT CONTROL BMPS IDENTIFIED IN THIS SWPPP AND ON THE CONSTRUCTION DRAWINGS. TEMPORARY AND PERMANENT EROSION PREVENTION AND SEDIMENT CONTROL BMPS WILL BE INSTALLED/CONSTRUCTED WHEN NECESSARY AS CONSTRUCTION ACTIVITIES PROGRESS AND IN ACCORDANCE WITH THE NPDES PERMIT REQUIREMENTS.

MAINTAIN AND REPLACE BMPS DURING THE EXECUTION OF THE PROJECT AS REQUIRED TO CONTINUE SWPPP COVERAGE DURING CONSTRUCTION

ESTIMATED BMP QUANTITIES		
ITEM	QUANTITY (TWIN LAKES POND)	UNIT
SILT FENCE	1240	LF
FLOATATION SILT CURTAIN	40	LF
BIOLOG	230	LF
INLET PROTECTION	1	EA
TEMP CONSTRUCTION ENTRANCE	1	EA
EROSION CONTROL BLANKET	260	SY
TEMP SEEDING	350	SY

CERTIFICATION

IN ACCORDANCE WITH SECTION 21 OF THE GENERAL PERMIT AUTHORIZATION TO DISCHARGE STORMWATER ASSOCIATED WITH CONSTRUCTION ACTIVITY UNDER THE NPDES, THE PREPARER OF THIS DOCUMENT WAS TRAINED UNDER THE UNIVERSITY OF MINNESOTA EROSION AND SEDIMENT CONTROL CERTIFICATION PROGRAM. JOSEPH R. PESIK'S CERTIFICATION IN DESIGN OF SWPPP IS VALID THROUGH MAY 31, 2026.

Joey Pesik

ONE CARLSON PARKWAY, SUITE 100  
PLYMOUTH MN, 55447  
PHONE: 763-479-4200  
FAX: 763-479-4242  
WWW.STANTEC.COM

CLIENT:

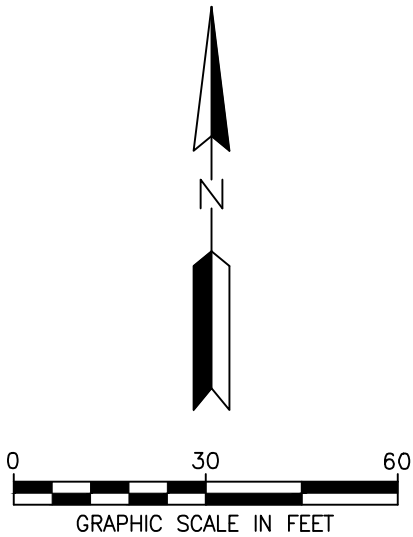
**MINNEHAHA CREEK WATERSHED DISTRICT**  
  
15320 MINNETONKA BLVD  
MINNETONKA, MN 55345

TWIN LAKES POND 2025-2026 MAINTENANCE

TWIN LAKES POND, ST. LOUIS PARK  
HENNEPIN COUNTY, MINNESOTA

PROJECT TITLE	TWIN LAKES POND 2025-2026 MAINTENANCE				
ISSUE NO.	0				
DESCRIPTION:	ISSUED FOR BID				
DATE:	9/26/2025				
CERTIFICATION:	I HEREBY CERTIFY THAT THIS PLAN, SPECIFICATION, OR REPORT WAS PREPARED BY ME OR UNDER MY DIRECT SUPERVISION AND THAT I AM A DULY LICENSED PROFESSIONAL ENGINEER UNDER THE LAWS OF THE STATE OF MINNESOTA.				
NICK WYERS					
LICENSE NO.:	57846				
DATE:	09/26/2025				
PROJECT NO.:	193807544				
DWN BY:	SMD	CHKD BY:	NPW	APPD BY:	NPW
ISSUE DATE:	9/26/2025				
ISSUE NO.:	0				
SHEET TITLE:	SWPPP				
SHEET NO.:	C-101				





NOTES

- SEE SHEET G-002 FOR ADDITIONAL PROJECT NOTES.
- EROSION CONTROL BLANKET (CATEGORY 25) SHALL USED FOR SLOPES STEEPER THAN 3H:1V, IF ENCOUNTERED. SEE DETAIL, 3/C-801.
- STOCKPILE DREDGED MUCK WITHIN POND FOOTPRINT DURING DREDGING ACTIVITIES.
- CONTRACTOR MAY USE EXISTING TRAIL FOR ACCESS TO POND CLEANOUT. CONTRACTOR IS REQUIRED TO PROTECT THE TRAIL AND ANY DAMAGE CAUSED BY CONSTRUCTION ACTIVITIES SHALL BE REPAIRED AT THE CONTRACTORS EXPENSE.



Stantec

ONE CARLSON PARKWAY, SUITE 100  
PLYMOUTH MN, 55447  
PHONE: 763-479-4200  
FAX: 763-479-4242  
WWW.STANTEC.COM

CLIENT:

MINNEHAHA CREEK  
WATERSHED  
DISTRICT

15320 MINNETONKA BLVD  
MINNETONKA, MN 55345

MINNEHAHA CREEK  
WATERSHED DISTRICT

PROJECT TITLE

TWIN LAKES POND 2025-2026  
MAINTENANCE

TWIN LAKES POND, ST. LOUIS PARK  
HENNEPIN COUNTY, MINNESOTA

DATE:	DESCRIPTION:	ISSUE NO.:	PROJECT TITLE
9/26/2025	ISSUED FOR BID	0	

CERTIFICATION:

I HEREBY CERTIFY THAT THIS PLAN, SPECIFICATION, OR REPORT WAS PREPARED BY ME OR UNDER MY DIRECT SUPERVISION AND THAT I AM A DULY LICENSED PROFESSIONAL ENGINEER UNDER THE LAWS OF THE STATE OF MINNESOTA.

NICK WYERS

LICENSE NO.: 57846

DATE: 09/26/2025

PROJECT NO.: 193807544

DWN BY: SMD    CHKD BY: NPW    APP'D BY: NPW

ISSUE DATE: 9/26/2025

ISSUE NO.: 0

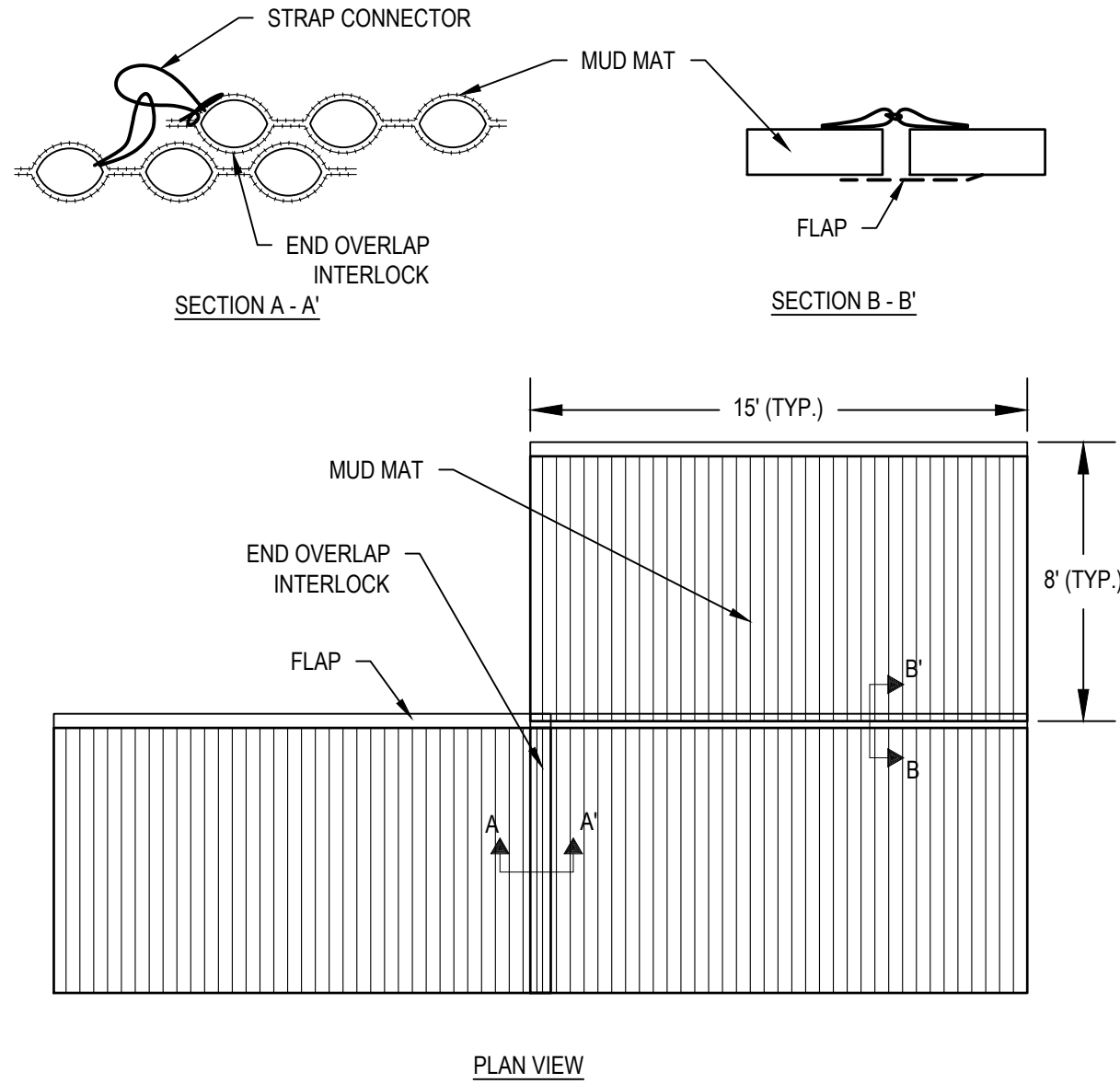
SHEET TITLE:

PROPOSED CONDITIONS

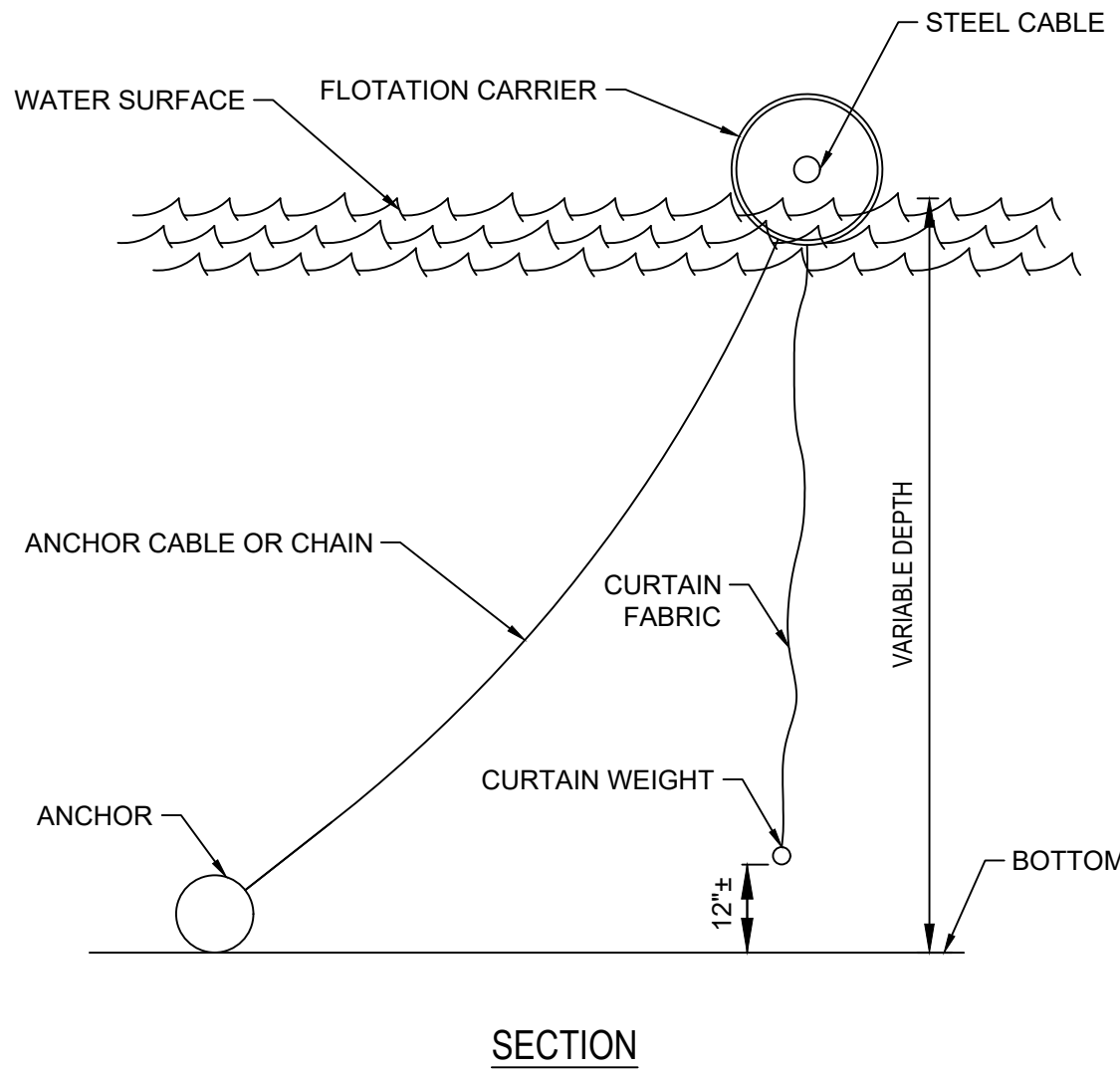
SHEET NO.:

C-201



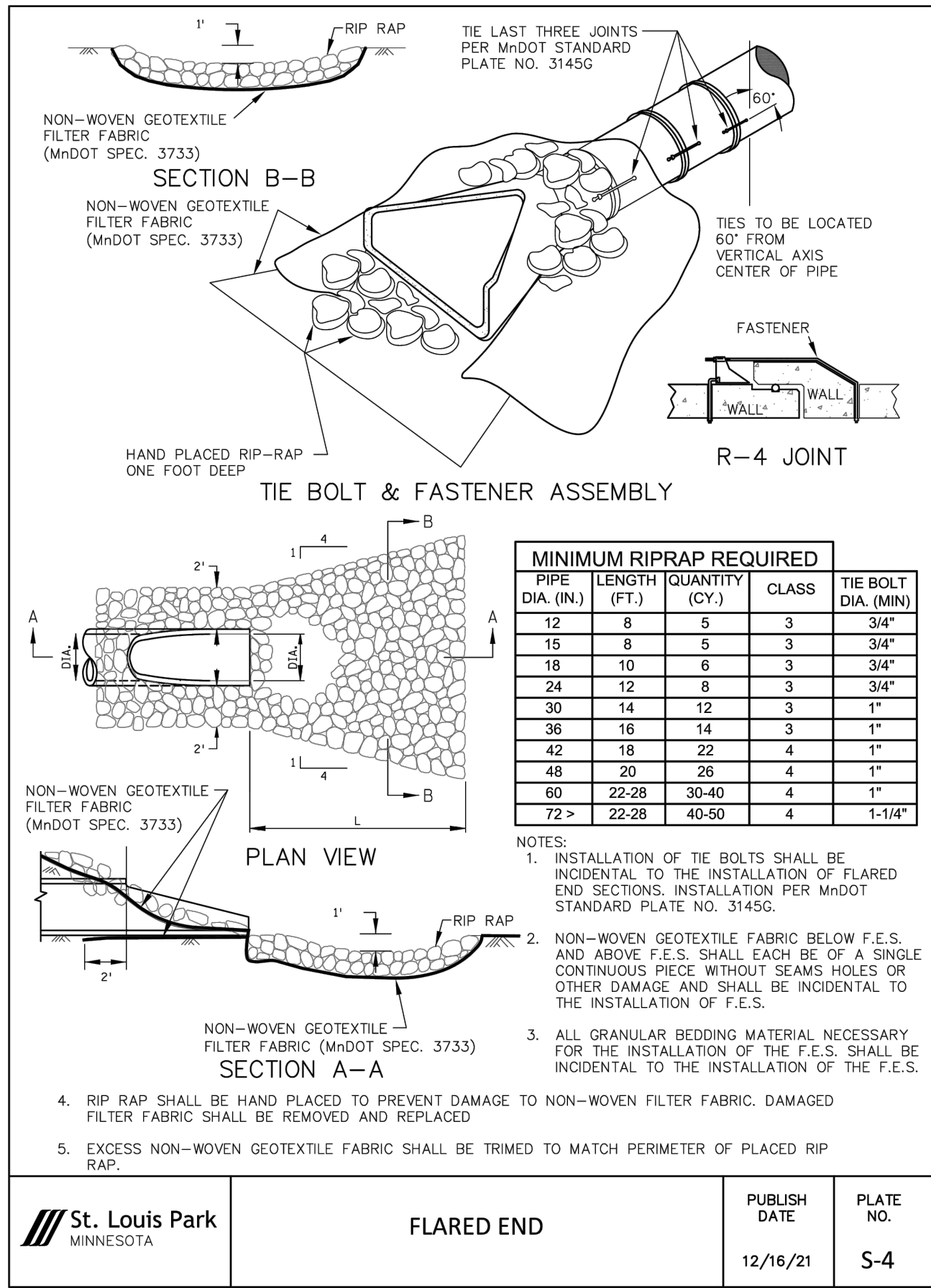


1 MUD MAT CONSTRUCTION ENTRANCE  
C-301 NOT TO SCALE

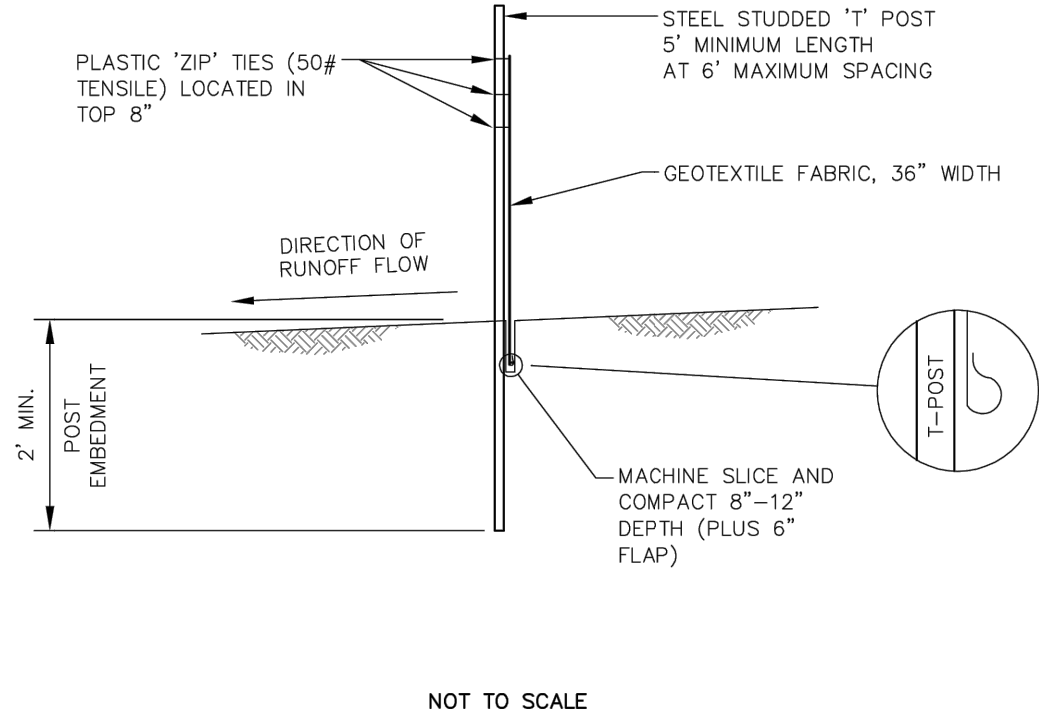


- NOTES:
1. DOUBLE FLOTATION SILT CURTAIN SHOULD BE SPACED 10' APART.
  2. CURTAIN LENGTH TO MATCH BOTTOM PROFILE AS CLOSELY AS POSSIBLE.
  3. MAXIMUM INTERVAL FOR SPACING OF WEIGHT IS 15'.

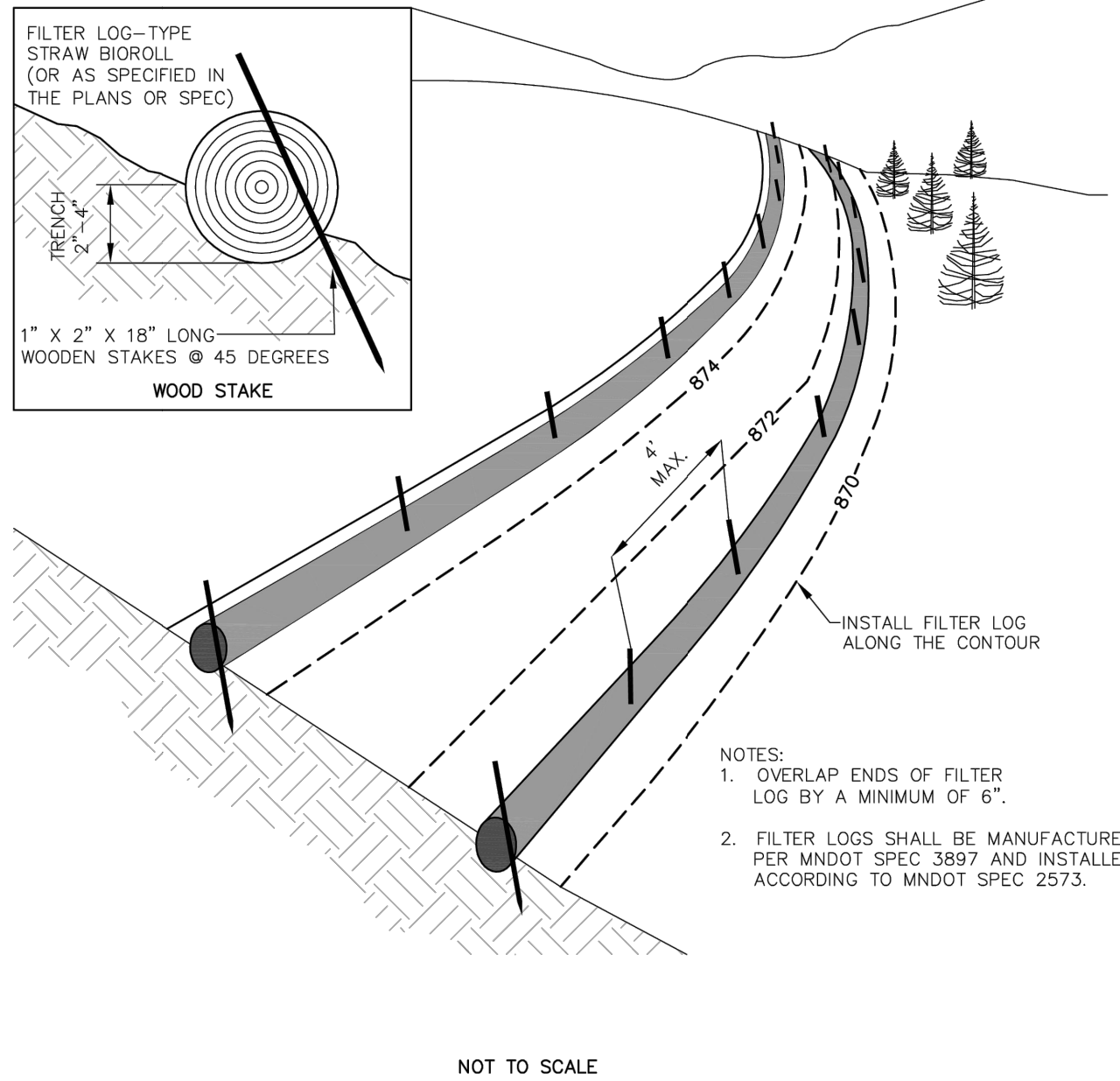
2 FLOTATION SILT CURTAIN  
C-801 NOT TO SCALE



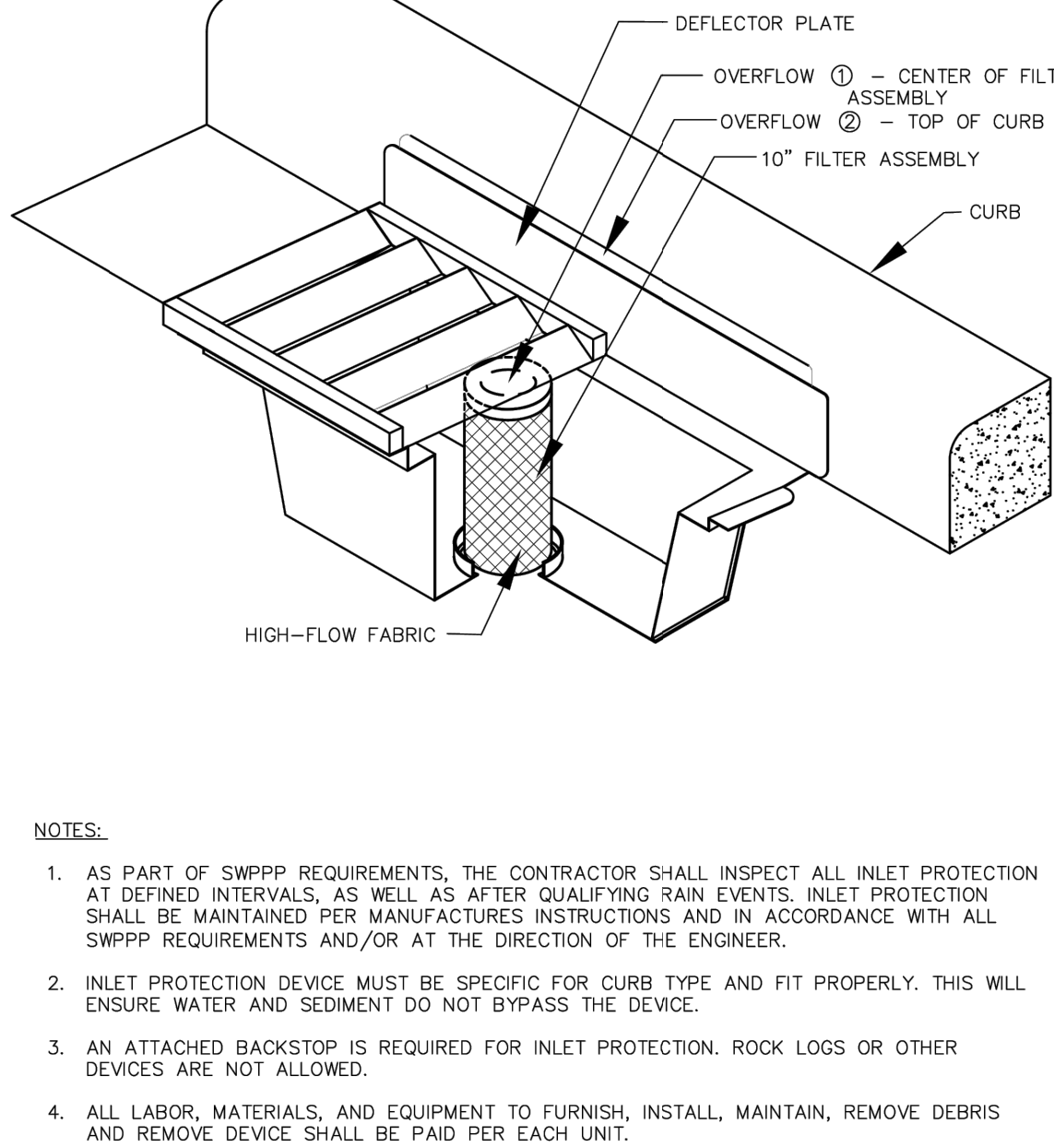
St. Louis Park MINNESOTA FLARED END  
PUBLISH DATE 12/16/21 PLATE NO. S-4



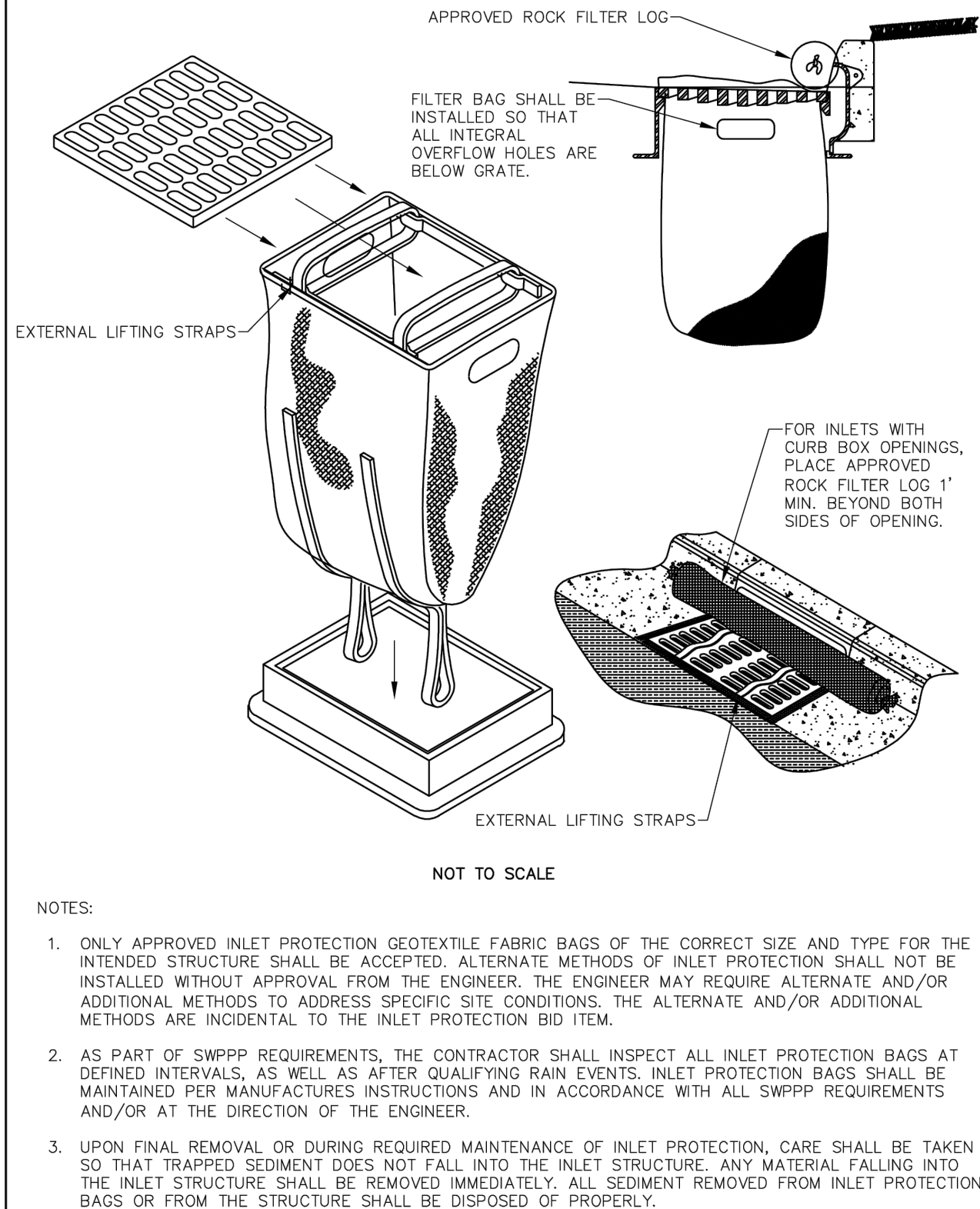
St. Louis Park MINNESOTA SILT FENCE MACHINE SLICED  
PUBLISH DATE 10/26/18 PLATE NO. EC-1



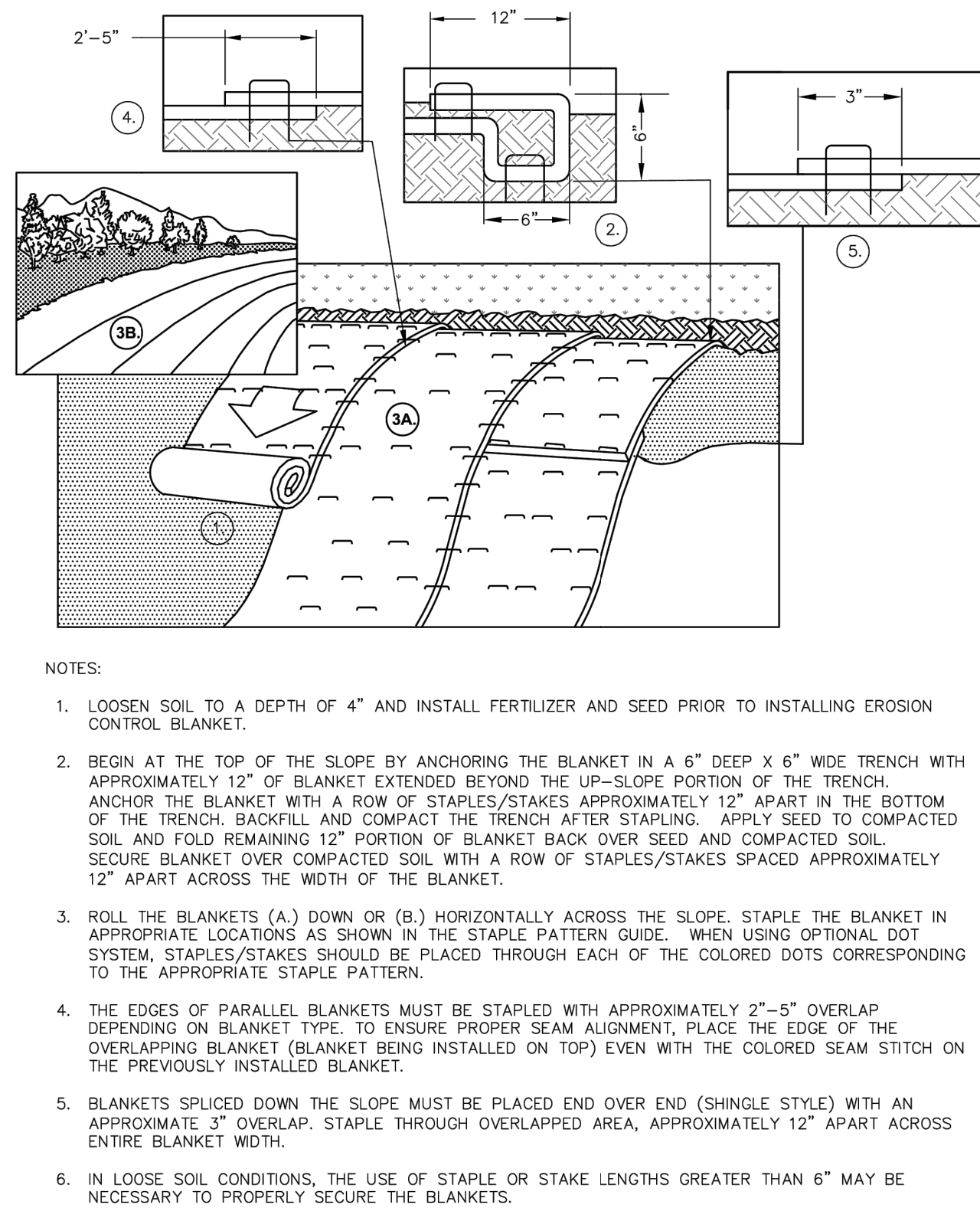
St. Louis Park MINNESOTA BIO-LOG  
PUBLISH DATE 10/26/18 PLATE NO. EC-3



St. Louis Park MINNESOTA CATCH BASIN METAL INLET PROTECTION  
PUBLISH DATE 3/18/20 PLATE NO. EC-6



St. Louis Park MINNESOTA INLET PROTECTION GEOTEXTILE BAG  
PUBLISH DATE 10/26/18 PLATE NO. EC-7



St. Louis Park MINNESOTA EROSION CONTROL BLANKET  
PUBLISH DATE 10/26/18 PLATE NO. EC-11

PROJECT TITLE:		ISSUE NO.:		DESCRIPTION:		DATE:	
		0		ISSUED FOR BID		9/26/2025	