

HENNEPIN COUNTY, MN
15NT117 R22W

REVISIONS:
CONSTRUCTION ISSUE:
11-12-24

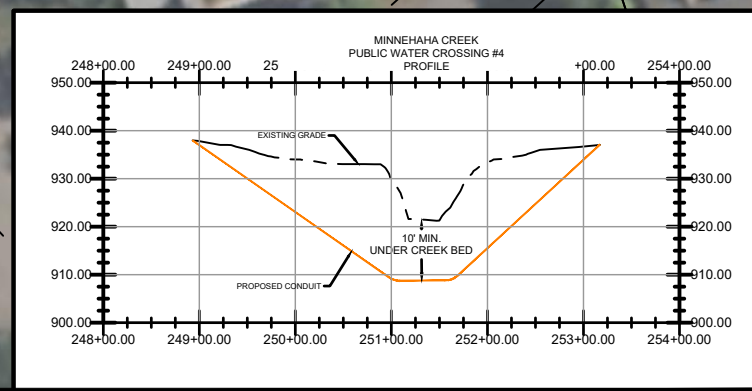
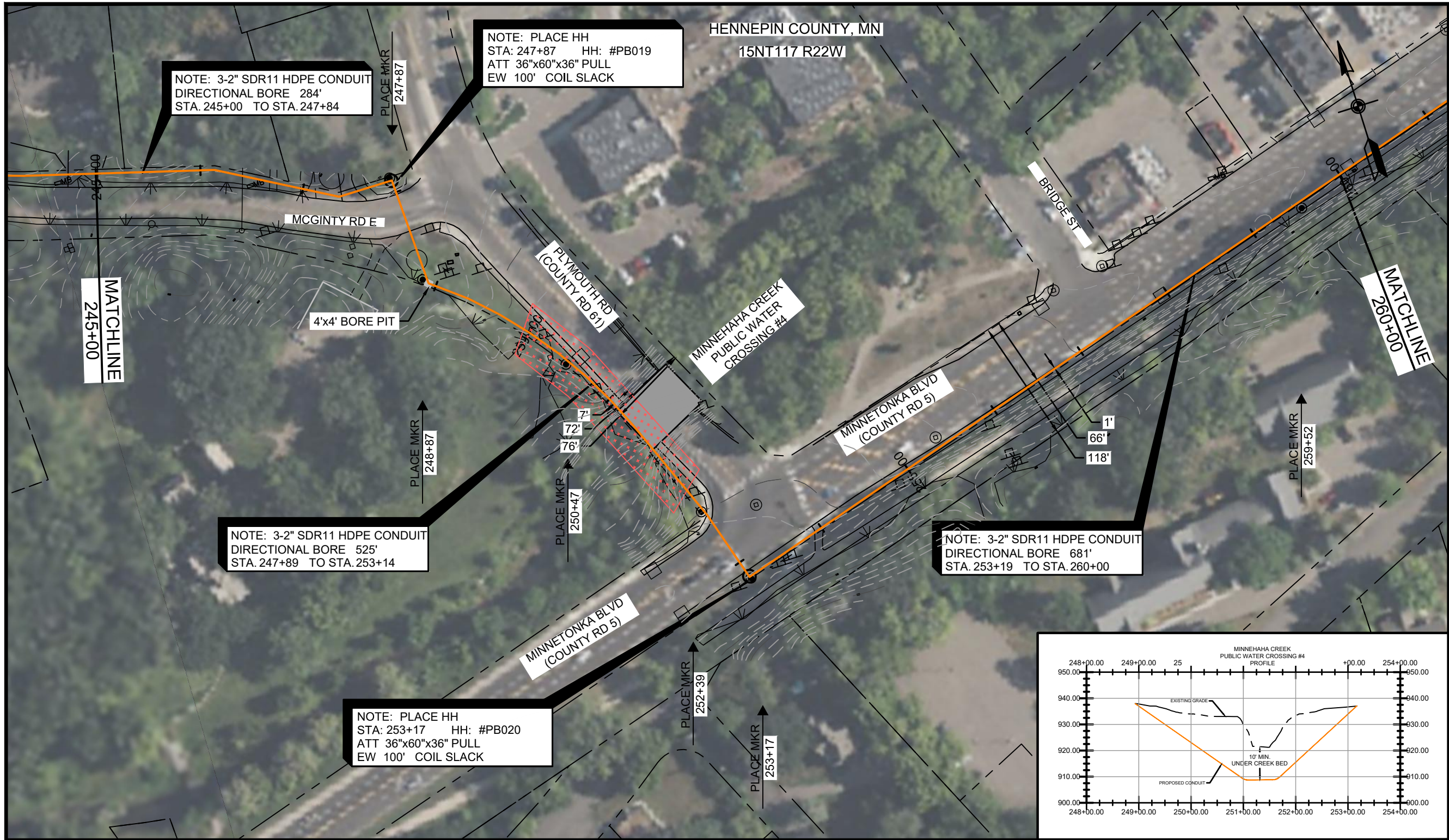
NOTE: 3-2" SDR11 HDPE CONDUIT
DIRECTIONAL BORE 284'
STA. 245+00 TO STA. 247+84

NOTE: PLACE HH
STA: 247+87 HH: #PB019
ATT 36"x60"x36" PULL
EW 100' COIL SLACK

NOTE: 3-2" SDR11 HDPE CONDUIT
DIRECTIONAL BORE 525'
STA. 247+89 TO STA. 253+14

NOTE: PLACE HH
STA: 253+17 HH: #PB020
ATT 36"x60"x36" PULL
EW 100' COIL SLACK

NOTE: 3-2" SDR11 HDPE CONDUIT
DIRECTIONAL BORE 681'
STA. 253+19 TO STA. 260+00



NOTES:



PREPARED FOR RECORD
APPROVED FOR _____ ENGINEER DATE _____
OUTSIDE PLANT _____
I HEREBY CERTIFY THAT THIS DOCUMENT WAS PREPARED BY ME OR UNDER MY DIRECT SUPERVISION AND THAT I AM A DULY REGISTERED ENGINEER UNDER THE LAWS OF THE STATE OF _____
SIGNED _____ DATE _____ REG. NO. _____



PROPRIETARY
USE PURSUANT TO COMPANY INSTRUCTIONS
SPECIFICATION
PROJECT NUMBER _____
OWNERSHIP: AT&T Corp.
LINE CODE: _____
CABLE CLI: _____
SCALE: 1" = 100'

PLYMOUTH TO DES MOINES FIBER BUILD
PLYMOUTH TO BLOOMINGTON REGEN SECTION
CONSTRUCTION DRAWINGS

DN021

R/W WIDTH PERMITS ← COUNTY PERMIT # COUNTY FILE # → R/W WIDTH PERMITS

