



# LONG LAKE CREEK PARTNERSHIP AT A GLANCE



**MINNEHAHA CREEK**  
WATERSHED DISTRICT

## PARTNERING FOR REGIONAL RESTORATION

Since 2018, the Cities of Long Lake, Medina, and Orono; Long Lake Waters Association (LLWA); and Minnehaha Creek Watershed District (MCWD) have worked together to improve water quality in the Long Lake Creek Subwatershed.

The partners created a Roadmap that outlines a strategy to restore five impaired lakes in the subwatershed and provide fishable, swimmable lakes for the region's three communities.

# THE PARTNERSHIP ROADMAP

To develop the Roadmap, MCWD led a subwatershed assessment, funded by a grant from the Board of Water and Soil Resources, to integrate resource needs and land use plans for a regional understanding of the issues, their drivers, and potential strategies to restore the system.

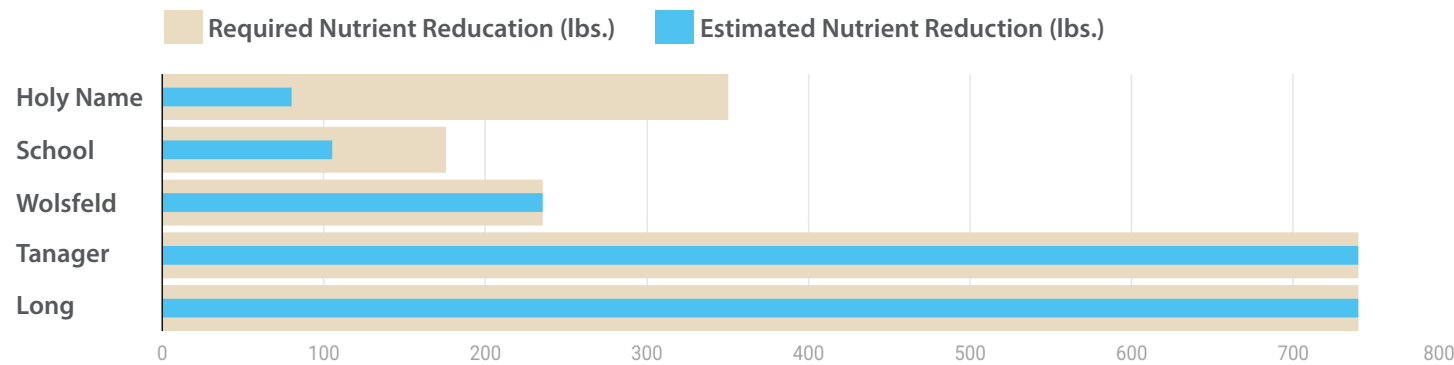
The Roadmap identifies capital project opportunities to generate significant water resource benefits for the region.



Explore the full Roadmap on MCWD's website: [minnehahacreek.org/long-lake-creek-roadmap](https://minnehahacreek.org/long-lake-creek-roadmap)

## WATER QUALITY BENEFITS

The partners identified 34 project opportunities that would provide measurable water quality improvements. These projects are estimated to achieve the nutrient load reductions required to remove **Wolsfeld Lake, Long Lake, and Tanager Lake** from the state's impaired waters list. Holy Name Lake and School Lake may require additional biological management to meet state standards.



## THREE-TIERED STRATEGY

The projects are organized into three implementation categories. Regional treatment projects are prioritized in the near term to cost-effectively address external nutrient sources and treat large drainage areas in the subwatershed. Localized landscape projects and in-lake management will complement regional treatment as funding and partnership opportunities emerge over time.

### REGIONAL TREATMENT

Retrofit three stormwater ponds and create additional treatment of stormwater upstream of Nelson Lakeside Park in Long Lake to enhance the system's effectiveness.

### LANDSCAPE PROJECTS

Implement 19 landscape projects to reduce external nutrient loading, including streambank stabilization, and wetland restoration.

### IN-LAKE MANAGEMENT

Administer alum treatment and biological management to address internal nutrient sources within the system, following the reduction of external nutrient sources.

# INITIAL ROADMAP IMPLEMENTATION

Partners are already advancing three projects from the Roadmap, one in each of the three cities. These include two regional treatment projects that provide the greatest nutrient reductions and one landscape project that will be implemented as part of a private development opportunity.



## HOLY NAME WETLAND BANK

This partnership between the City of Medina, private landowners, and MCWD aims to restore 19 acres of wetland and buffer as part of a residential development. The project will increase flood storage, reduce nutrients to Holy Name Lake, improve wildlife habitat, and generate wetland bank credits.

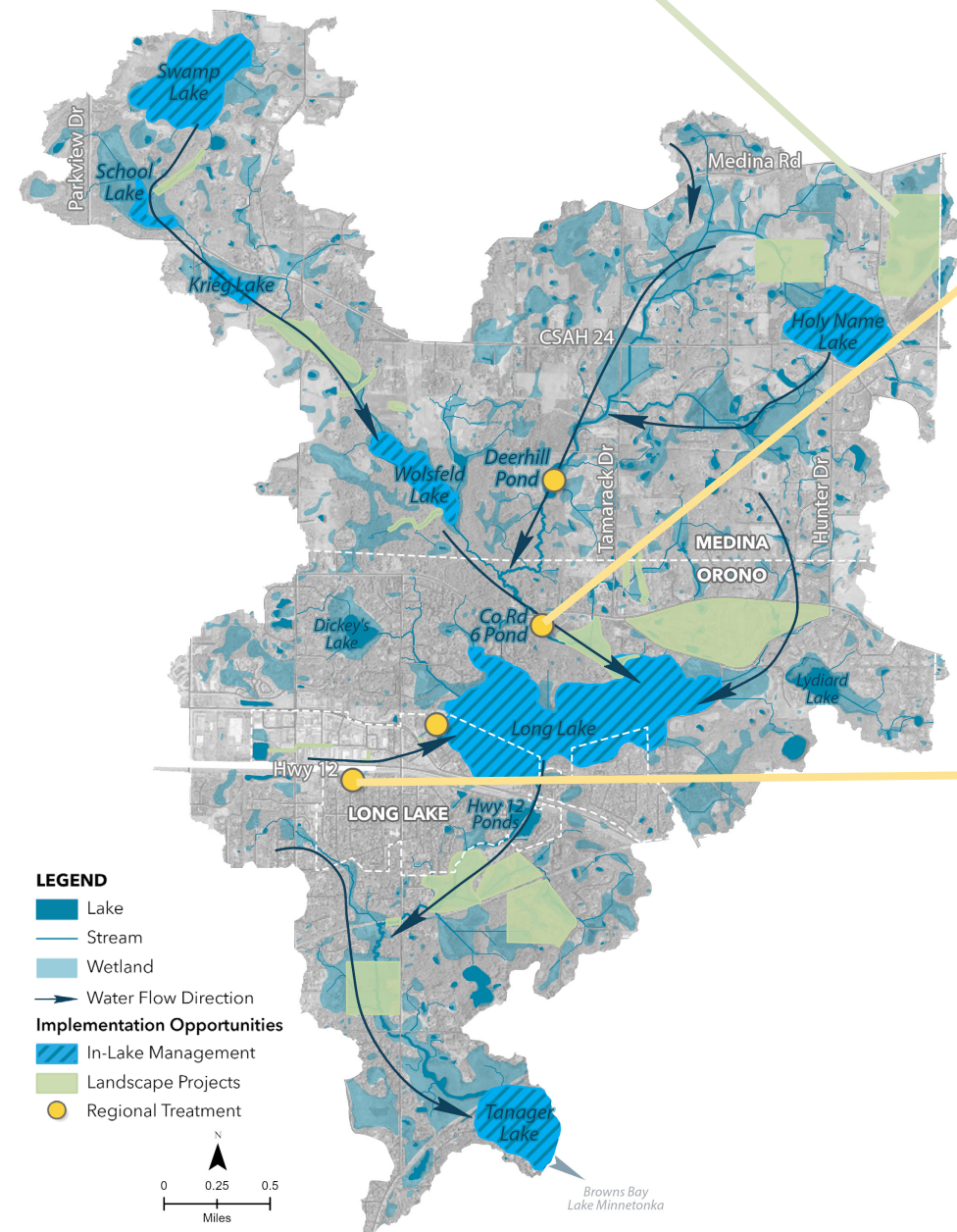


## COUNTY ROAD 6 POND RETROFIT

Retrofitting this MCWD-owned stormwater pond in the City of Orono will improve water quality in Long Lake by reducing an estimated 67 pounds of nutrients to the lake annually. Construction is planned for early 2025.

## HOLBROOK PARK STORMWATER TREATMENT

MCWD and the City of Long Lake have secured grant funding to conduct feasibility and design work for a regional stormwater treatment project at this city park to reduce runoff volume and approximately 47 pounds of nutrients to Long Lake annually.



## LONG-TERM COMMITMENT

Restoring these impaired lakes will require long-term investment and innovative public and private partnerships. While MCWD will lead some projects, it can also provide support for partner-led projects to accelerate Roadmap implementation.

## INVESTING IN LASTING BENEFITS

MCWD's Land and Water Partnership (LWP) program provides technical and financial support to public and private partners for projects that generate significant water resource improvements. Potential partners are encouraged to reach out to discuss project opportunities that may be a good fit for the program.



Learn more about the program: [minnehahacreek.org/partnerships/land-water-partnership-program](https://minnehahacreek.org/partnerships/land-water-partnership-program)




## STAYING CONNECTED


Contact MCWD to discuss potential project opportunities and partnerships. Visit our website to learn more and stay informed as projects advance.



[minnehahacreek.org/long-lake-creek-roadmap](https://minnehahacreek.org/long-lake-creek-roadmap)

**KATE MORAN, MCWD**  
**POLICY PLANNING COORDINATOR**

 952-641-4520

 [kmoran@minnehahacreek.org](mailto:kmoran@minnehahacreek.org)  
[minnehahacreek.org](https://minnehahacreek.org) | 952-471-0590