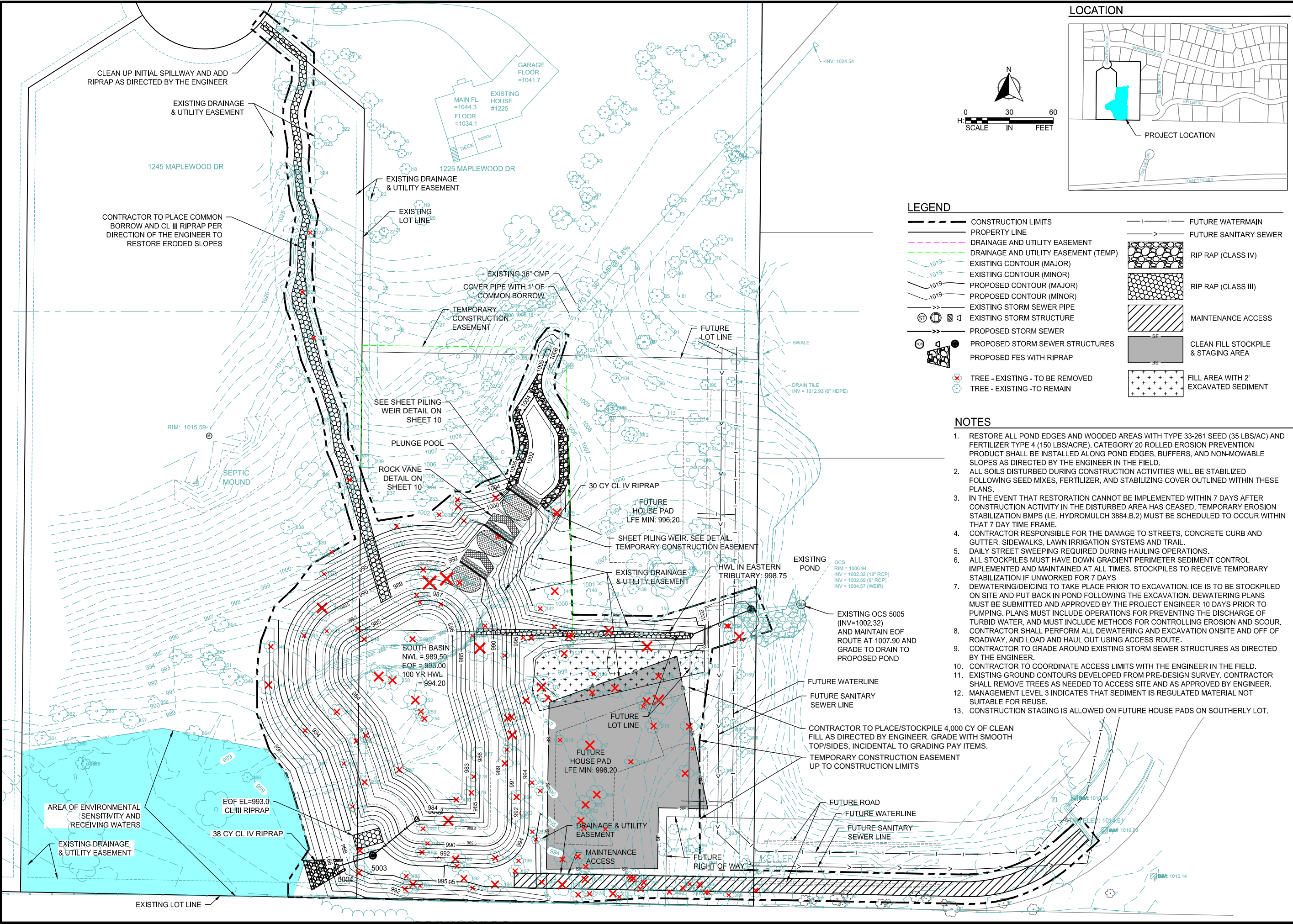
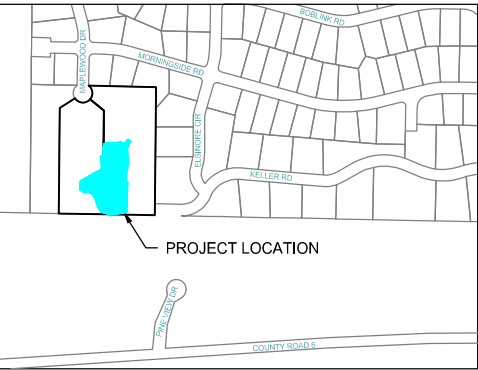


C:\ACC\ACC\WSB\025676-000\Project Files\025676-000-C-GEN LAYOUT PLAN.dwg 1/22/2025 3:37:22 PM



LOCATION



LEGEND

- CONSTRUCTION LIMITS
- PROPERTY LINE
- DRAINAGE AND UTILITY EASEMENT
- DRAINAGE AND UTILITY EASEMENT (TEMP)
- EXISTING CONTOUR (MAJOR)
- EXISTING CONTOUR (MINOR)
- PROPOSED CONTOUR (MAJOR)
- PROPOSED CONTOUR (MINOR)
- EXISTING STORM SEWER PIPE
- EXISTING STORM STRUCTURE
- PROPOSED STORM SEWER
- PROPOSED STORM SEWER STRUCTURES
- PROPOSED FES WITH RIPRAP
- FUTURE WATERMAIN
- FUTURE SANITARY SEWER
- RIP RAP (CLASS IV)
- RIP RAP (CLASS III)
- MAINTENANCE ACCESS
- CLEAN FILL STOCKPILE & STAGING AREA
- FILL AREA WITH 2' EXCAVATED SEDIMENT
- TREE - EXISTING - TO BE REMOVED
- TREE - EXISTING - TO REMAIN

NOTES

- RESTORE ALL POND EDGES AND WOODED AREAS WITH TYPE 33-261 SEED (35 LBS/AC) AND FERTILIZER TYPE 4 (150 LBS/ACRE), CATEGORY 20 ROLLED EROSION PREVENTION PRODUCT SHALL BE INSTALLED ALONG POND EDGES, BUFFERS, AND NON-MOWABLE SLOPES AS DIRECTED BY THE ENGINEER IN THE FIELD.
- ALL SOILS DISTURBED DURING CONSTRUCTION ACTIVITIES WILL BE STABILIZED FOLLOWING SEED MIXES, FERTILIZER, AND STABILIZING COVER OUTLINED WITHIN THESE PLANS.
- IN THE EVENT THAT RESTORATION CANNOT BE IMPLEMENTED WITHIN 7 DAYS AFTER CONSTRUCTION ACTIVITY IN THE DISTURBED AREA HAS CEASED, TEMPORARY EROSION STABILIZATION BMPs (I.E. HYDROMULCH 3884.B.2) MUST BE SCHEDULED TO OCCUR WITHIN THAT 7 DAY TIME FRAME.
- CONTRACTOR RESPONSIBLE FOR THE DAMAGE TO STREETS, CONCRETE CURB AND GUTTER, SIDEWALKS, LAWN IRRIGATION SYSTEMS AND TRAIL.
- DAILY STREET SWEEPING REQUIRED DURING HAULING OPERATIONS.
- ALL STOCKPILES MUST HAVE DOWN GRADIENT PERIMETER SEDIMENT CONTROL IMPLEMENTED AND MAINTAINED AT ALL TIMES. STOCKPILES TO RECEIVE TEMPORARY STABILIZATION IF UNWORKED FOR 7 DAYS
- DEWATERING/DEICING TO TAKE PLACE PRIOR TO EXCAVATION. ICE IS TO BE STOCKPILED ON SITE AND PUT BACK IN POND FOLLOWING THE EXCAVATION. DEWATERING PLANS MUST BE SUBMITTED AND APPROVED BY THE PROJECT ENGINEER 10 DAYS PRIOR TO PUMPING. PLANS MUST INCLUDE OPERATIONS FOR PREVENTING THE DISCHARGE OF TURBID WATER, AND MUST INCLUDE METHODS FOR CONTROLLING EROSION AND SCOUR.
- CONTRACTOR SHALL PERFORM ALL DEWATERING AND EXCAVATION ONSITE AND OFF OF ROADWAY, AND LOAD AND HAUL OUT USING ACCESS ROUTE.
- CONTRACTOR TO GRADE AROUND EXISTING STORM SEWER STRUCTURES AS DIRECTED BY THE ENGINEER.
- CONTRACTOR TO COORDINATE ACCESS LIMITS WITH THE ENGINEER IN THE FIELD.
- EXISTING GROUND CONTOURS DEVELOPED FROM PRE-DESIGN SURVEY. CONTRACTOR SHALL REMOVE TREES AS NEEDED TO ACCESS SITE AND AS APPROVED BY ENGINEER.
- MANAGEMENT LEVEL 3 INDICATES THAT SEDIMENT IS REGULATED MATERIAL NOT SUITABLE FOR REUSE.
- CONSTRUCTION STAGING IS ALLOWED ON FUTURE HOUSE PADS ON SOUTHERLY LOT.

wsb

CITY OF MEDINA

SCALE: AS SHOWN
PLAN BY: CKJ

DESIGN BY: SMR
CHECK BY: KF

REVISIONS	
NO.	DESCRIPTION

I HEREBY CERTIFY THAT THIS PLAN, SPECIFICATION, OR REPORT WAS PREPARED BY ME OR UNDER MY DIRECT SUPERVISION AND THAT I AM A DULY LICENSED PROFESSIONAL ENGINEER UNDER THE LAWS OF THE STATE OF MINNESOTA.

JACOB H. NEWHALL, P.E.
DATE: 01/23/2025 LIC. NO. 49170

GRADING PLAN

MORNINGSIDE RAVINE STABILIZATION AND STORMWATER IMPROVEMENTS
CITY OF MEDINA