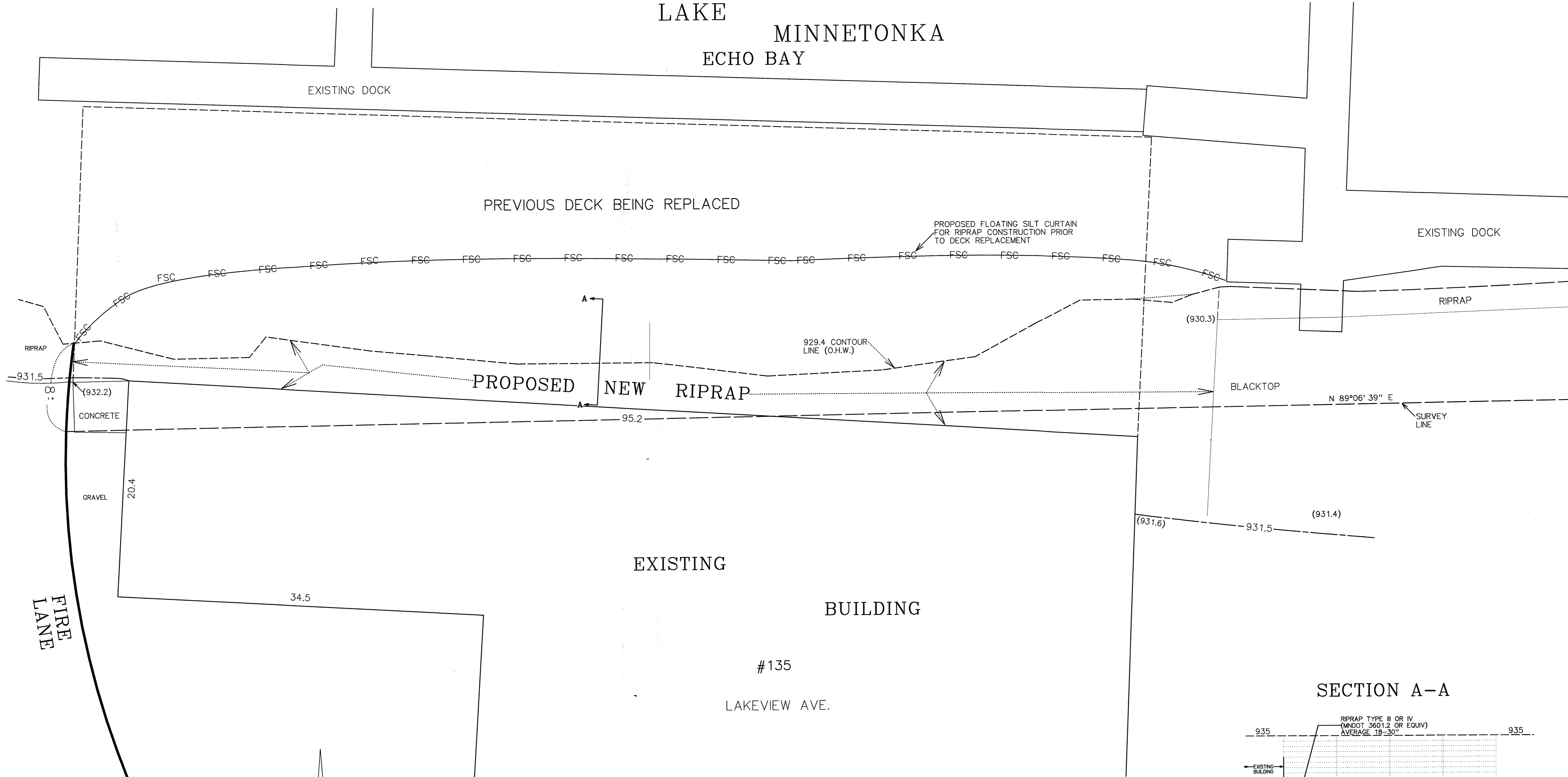
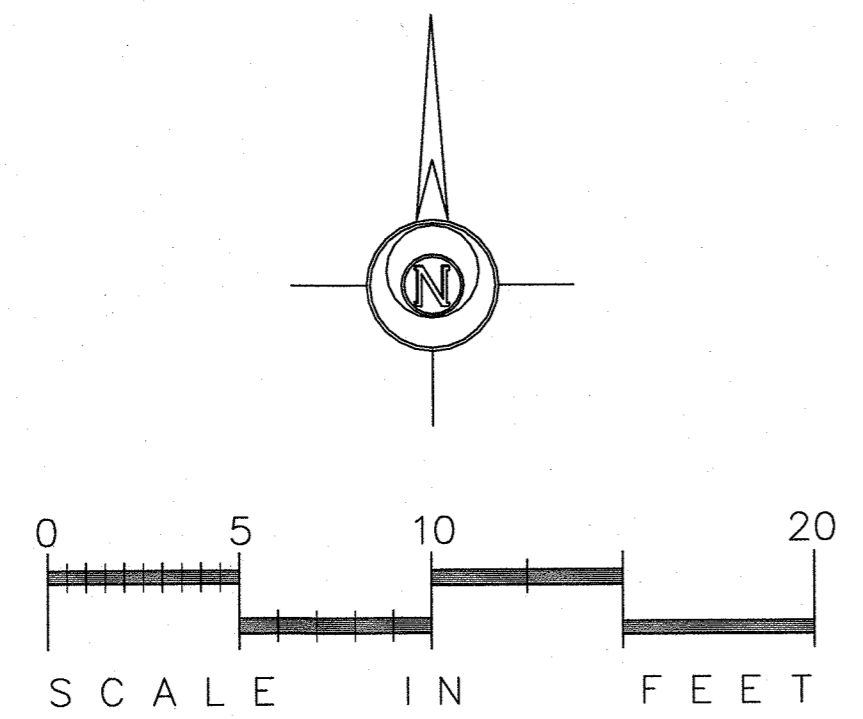
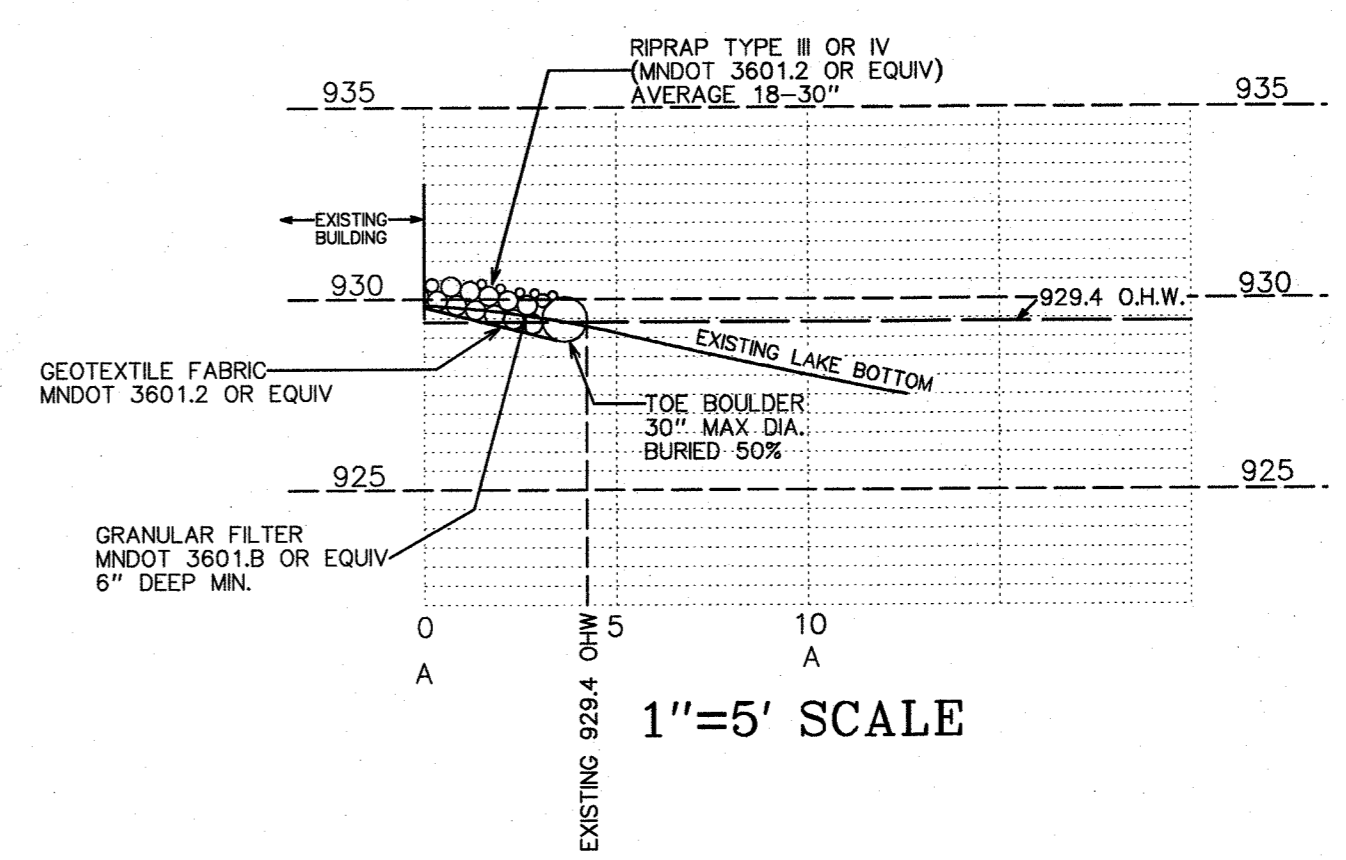


PROPOSED RIPRAP DRAWING FOR
TONKA BAY PROPERTY HOLDINGS
 ADJACENT TO THE CARRIBBEAN MARINA BUILDING
 HENNEPIN COUNTY, MINNESOTA

LAKE
 MINNETONKA
 ECHO BAY



SECTION A-A



GRONBERG & ASSOCIATES, INC.
 CIVIL ENGINEERS, LAND SURVEYORS, LAND PLANNERS
 445 NORTH WILLOW DRIVE LONG LAKE, MN 55356
 952-473-4141

DATE: 2-6-25
 SCALE: 1"=5'
 SHEET NO: 25-034
 SHEET NO.:

I hereby certify that this plan, specification, or report was prepared by me, or under my direct supervision, and that I am a duly licensed Professional Engineer under the laws of the State of Minnesota.
 Mark S. Gronberg Minnesota License Number 12755

I hereby certify that this plan, specification, or report was prepared by me, or under my direct supervision, and that I am a duly licensed Professional Land Surveyor under the laws of the State of Minnesota.
 Mark S. Gronberg Minnesota License Number 12755

REVISIONS

DATE