

DEMOLITION NOTES

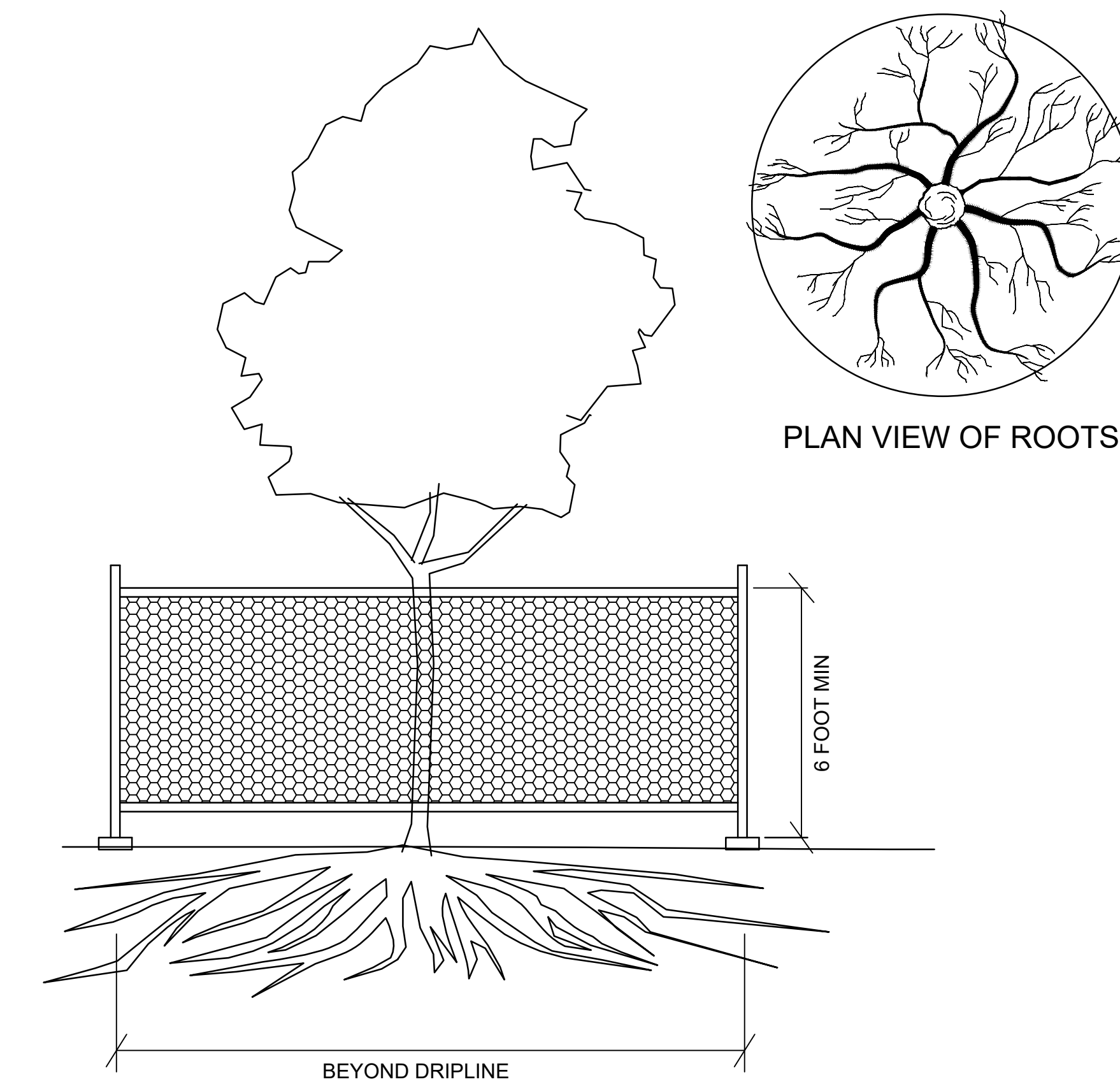
1. Verify all existing utility locations.
2. It is the responsibility of the Contractor to perform or coordinate all necessary utility demotions and relocations from existing utility locations to all onsite amenities and buildings. These connectors include, but are not limited to, water, sanitary sewer, cable tv, telephone, gas, electric, site lighting, etc.
3. Prior to beginning work, contact Gopher State Onecall (651-454-0002) to locate utilities throughout the area under construction. The Contractor shall retain the services of a private utility locator to locate the private utilities.
4. Sawcut along edges of pavements, sidewalks, and curbs to remain.
5. All construction shall be performed in accordance with state and local standard specifications for construction.

SYMBOL LEGEND

- REMOVE AND DISPOSE OF EXISTING BITUMINOUS PAVEMENT SECTION
- REMOVE AND DISPOSE OF EXISTING CONCRETE PAVEMENT SECTION
- REMOVE AND DISPOSE OF EXISTING GRAVEL SURFACING
- REMOVE AND DISPOSE OF SYNTHETIC TURF CARPET AND INFILL. NEW CARPET BY OWNER.
- TREE PROTECTION SEE DETAIL 1/C100

KEY NOTES

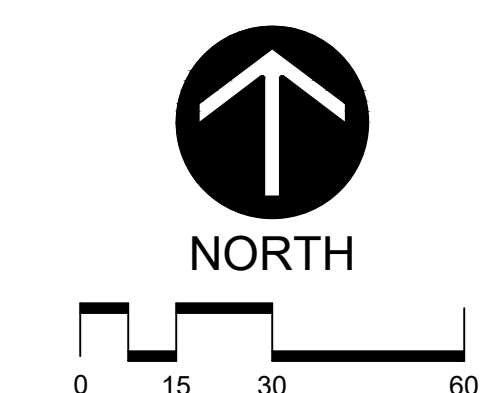
- PROTECT EXISTING.
- REMOVE AND DISPOSE OF BITUMINOUS PAVEMENT.
- REMOVE AND DISPOSE OF CONCRETE PAVEMENT/CURB.
- REMOVE AND DISPOSE OF FENCE, GATES, AND FOOTINGS.
- REMOVE AND DISPOSE OF BLEACHERS AND PIER FOOTINGS.
- REMOVE AND SALVAGE PRESSBOX.
- SEE ELECTRICAL.
- REMOVE AND DISPOSE OF GRAVEL SURFACING.



NOTES: TREE PROTECTION

1. REFER TO STANDARDS IN GENERAL SPECIFICATIONS FOR TREE PROTECTION.
2. DIAMETER OF PROTECTION ZONE SHOULD BE ONE FOOT FOR EACH INCH OF TRUNK DIAMETER BREAK HEIGHT OR 1/2 HEIGHT OF TREE, WHICHEVER IS GREATER. FOR 2-INCH CALIPER TREES OR SMALLER, THE PROTECTION ZONE SHALL BE 6 FOOT MINIMUM DIAMETER.
3. TEMPORARY FENCING (8 FT HIGH) SHALL BE PLACED AT THE DRIPLINE OF THE TREE TO BE SAVED. FENCE SHALL COMPLETELY ENIRCLE THE TREE(S). TO INSTALL FENCE POSTS, AVOID DRIVING POSTS OR STAKES INTO MAJOR ROOTS.
4. DEAD TREES, SCRUB, OR UNDERGROWTH SHALL BE CUT FLUSH WITH ADJACENT GRADE. THERE WILL BE NO SOIL DISTURBANCE UNDER THE DRIP LINE OF TREES TO BE PRESERVED.
5. PLACE 6 INCHES OF BARK MULCH AT AREAS NOT PROTECTED BY BARRIER.
6. TREATMENT OF ROOTS EXPOSED DURING CONSTRUCTION: FOR ROOTS OVER 1 INCH IN DIAMETER DAMAGED DURING CONSTRUCTION, MAKE A CLEAN STRAIGHT CUT TO REMOVE DAMAGED PORTION OF ROOT. ALL EXPOSED ROOTS SHOULD BE TEMPORARILY COVERED WITH DAMP BURLAP AND COVERED WITH SOIL OR MULCH AS SOON AS POSSIBLE TO PREVENT DRYING.
7. FOR PRUNING GUIDELINES, SEE ANSI #300.
8. NO EQUIPMENT OR MACHINERY SHALL BE USED WITHIN THE PROTECTION FENCE. WORK WITHIN THE PROTECTION ZONE SHALL BE DONE MANUALLY.
9. NO STOCKPILING OF MATERIALS, VEHICULAR TRAFFIC, OR STORAGE IS ALLOWED WITHIN THE LIMIT OF THE FENCING.

TREE PROTECTION
NOT TO SCALE



POPE DESIGN GROUP
767 N. EUSTIS STREET, SUITE 190
ST. PAUL, MINNESOTA 55114
651.642.9200
WWW.POPEDESIGN.COM



SLP HIGH SCHOOL STADIUM TEAM ROOMS
ST. LOUIS PARK, MN



Larson Engineering, Inc.
3524 Labore Road
White Bear Lake, MN 55110
651.481.9120 (f) 651.481.9201
www.larsonengr.com

© 2024 Larson Engineering, Inc. All rights reserved.

DEMOLITION PLAN

ISSUES & REVISIONS	DATE
City Comment Revisions	10/01/24
Bid Release	10/16/24
Addendum #2	11/15/24

I hereby certify that this plan, specification, or report was prepared by me or under my direct supervision and that I am a duly Licensed Professional Engineer under the laws of the State of Minnesota.

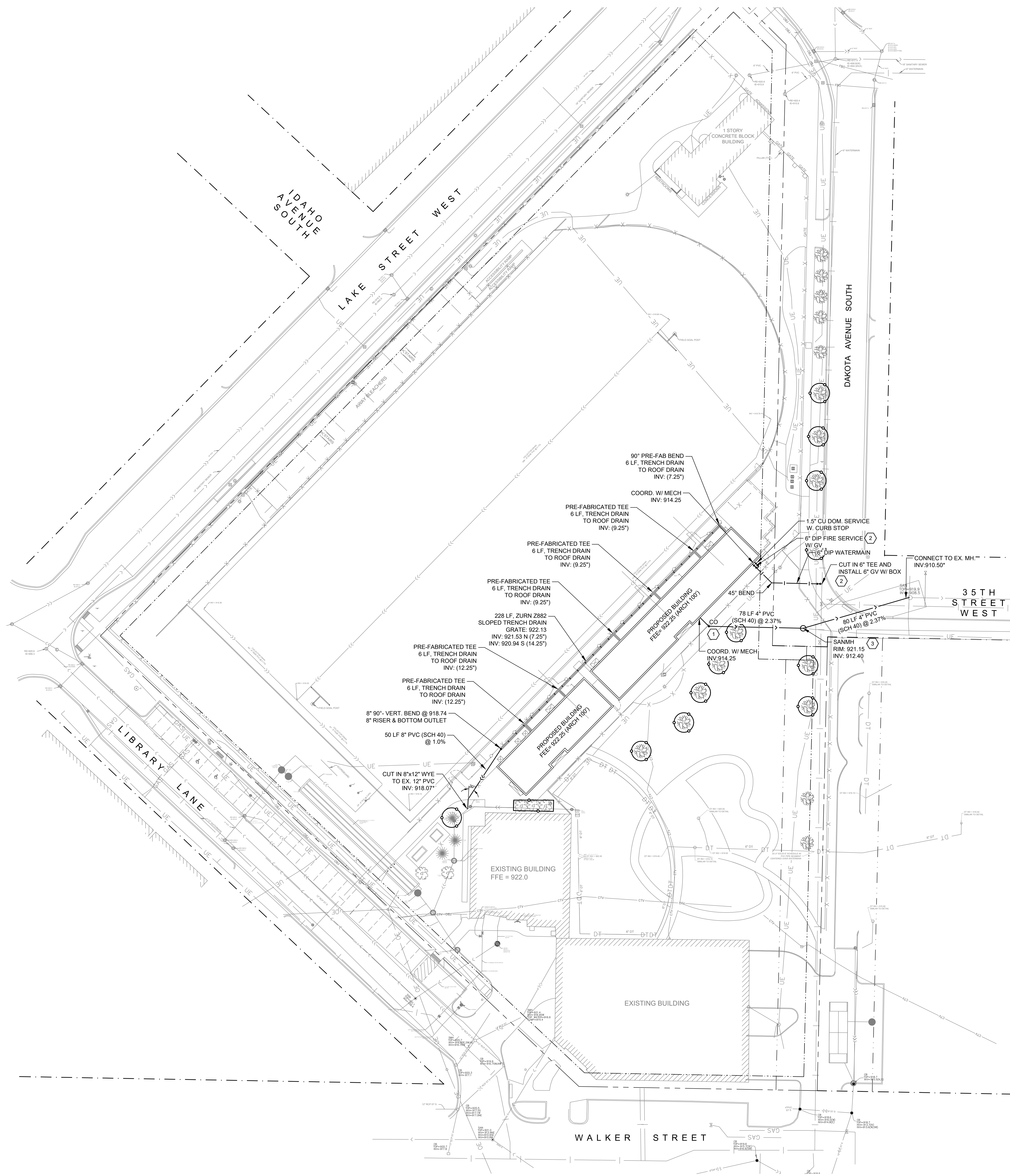
Eric G. Meyer
ERIC G. MEYER, P.E.
Date: 10/16/24 Lic No: 44592

COMMISSION NO: 12236011
DRAWN BY: KBK
CHECKED BY: EGM

SHEET

C100

TRUE SHEET SCALE



SYMBOL LEGEND

- | | | | | | |
|---|------------------|---|-----|---|------------------------------|
| ○ | STORM MANHOLE | — | CTV | — | CABLE UNDERGROUND LINE |
| ○ | CATCH BASIN | — | OE | — | ELECTRIC OVERHEAD LINE |
| □ | CURB INLET | — | UE | — | ELECTRIC UNDERGROUND LINE |
| ▲ | FLARED END | — | FO | — | FIBER OPTIC UNDERGROUND LINE |
| ○ | SANITARY MANHOLE | — | GAS | — | NATURAL GAS UNDERGROUND LINE |
| ○ | HYDRANT | — | GAS | — | SANITARY SEWER PIPE |
| ⊕ | GATE VALVE & BOX | — | T | — | STORM SEWER PIPE |
| ⊗ | WATER SHUTOFF | — | DT | — | TELEPHONE UNDERGROUND LINE |
| ⊙ | LIGHT POLE | — | DT | — | WATERMAIN PIPE |
| | | — | DT | — | DRAINTILE PIPE |

KEY NOTES

- 1 NEW SANITARY SEWER CLEAN-OUT, SEE DETAIL 8/C500.
- 2 NEW WATERMAIN GATE VALVE, SEE DETAIL 9/C500.
- 3 NEW SANITARY MANHOLE, SEE DETAIL 14/C500.

UTILITY NOTES

1. It is the responsibility of the contractor to perform or coordinate all necessary utility connections and relocations from existing utility locations to the proposed building, as well as to all onsite amenities. These connections include but are not limited to water, sanitary sewer, cable TV, telephone, gas, electric, site lighting, etc.
2. All service connections shall be performed in accordance with state and local standard specifications for construction. Utility connections (sanitary sewer, watermain, and storm sewer) may require a permit from the City.
3. The contractor shall verify the elevations at proposed connections to existing utilities prior to any demolition or excavation.
4. The contractor shall notify all appropriate engineering departments and utility companies 72 hours prior to construction. All necessary precautions shall be made to avoid damage to existing utilities.
5. Storm sewer requires testing in accordance with Minnesota plumbing code 4714.1109 where located within 10 feet of waterlines or the building.
6. Maintain a minimum of 7 1/2' of cover over all water lines. Where 7 1/2' of cover is not provided, install 2" rigid polystyrene insulation (MN/DOT 3760) with a thermal resistance of at least 5 and a compressive strength of at least 25 psi. Insulation shall be 8" wide, centered over pipe with 6" sand cushion between pipe and insulation. Where depth is less than 5', use 4" of insulation.
7. Install water lines 12" above sewers. Where the sewer is less than 12" below the water line (or above), install sewer piping of materials approved for inside building use for 10 feet on each side of the crossing.
8. All watermain piping shall be class 52 ductile iron pipe unless noted otherwise.
9. See Project Specifications for bedding requirements.
10. Pressure test and disinfect all new watermains in accordance with state and local requirements.
11. Sanitary sewer piping shall be PVC Schedule 40.



POPE DESIGN GROUP
767 N. EUSTIS STREET, SUITE 190
ST. PAUL, MINNESOTA 55114
651.642.9200
WWW.POPEDESIGN.COM



SLP HIGH SCHOOL STADIUM TEAM ROOMS
ST. LOUIS PARK, MN



Larson Engineering, Inc.
3524 Labore Road
White Bear Lake, MN 55110
651.481.9120 (f) 651.481.9201
www.larsonengr.com

© 2024 Larson Engineering, Inc. All rights reserved.

UTILITY PLAN

ISSUES & REVISIONS	DATE
City Comment Revisions	10/01/24
Bid Release	10/16/24
Addendum #2	11/15/24

I hereby certify that this plan, specification, or report was prepared by me or under my direct supervision and that I am a duly Licensed Professional Engineer under the laws of the State of Minnesota.

Eric G. Meyer
ERIC G. MEYER, P.E.
Date: 10/16/24 Lic No: 44592

COMMISSION NO: 12236011
DRAWN BY: KBK
CHECKED BY: EGM

SHEET

C400

TRUE SHEET SCALE

