

Jun 06, 2025 - 2:48pm  
Xref Filename: 17701\_s\_base\17701\_title Block\17701\_title Block\17701\_c\_base\17701\_civil\01 CAD files\01 SHEETS\17701\_C\_SITE.dwg  
Y:\17700\17701 WOODHILL CC - DRAINAGE STUDY - WAYZATA\_07 Civil\01 CAD files\01 SHEETS\17701\_C\_SITE.dwg

### GENERAL NOTES

- UTILITIES SHOWN HERE ARE FOR INFORMATIONAL USE ONLY AND ARE NOT GUARANTEED IN THEIR ACCURACY. VERIFY WORK. NOTIFY ENGINEER OF ANY/ALL DISCREPANCIES IMMEDIATELY.
- UTILITIES MUST BE LOCATED PRIOR TO EXCAVATION OR GRADING ON ANY SITE. CALL GOPHER SATE ONE CALL AT 1-800-252-1166 AS SOON AS POSSIBLE TO SCHEDULE UTILITY LOCATIONS FOR THIS SITE.
- PROTECT ALL EXISTING IMPROVEMENT NOT NOTED FOR REMOVAL. CONTRACTOR TO REPAIR/REPLACE DAMAGES DUE TO THEIR WORK.
- REFERENCE SHEET CP201 TO CP204 FOR STORM SEWER PROFILES. REFERENCE SHEET C500 & C501 FOR CONSTRUCTION DETAILS.
- PROPOSED PIPE MATERIALS SHALL BE PVC SDR 35 OR DUAL-WALL HDPE MEETING ASTM F2648.

### KEY NOTES

- INSTALL SALVAGED GRAVEL TO MATCH
- REFER TO GOLF COURSE PLANS FOR SEEDING MIXES + ADDITIONAL RESTORATION INFORMATION
- CONNECT EXISTING DRAINAGE LATERAL TO NEW WORK OR COORDINATE NEW DRAINAGE LATERALS WITH THESE PLANS

### LEGEND

- CONSTRUCTION LIMITS
- PROPOSED BITUMINOUS PAVEMENT
- PROPOSED GRAVEL PAVEMENT
- GRASS SEEDING AREAS
- SF
- SILT FENCE
- SEDIMENT CONTROL LOG
- PROPOSED STORM SEWER PIPE
- PROPOSED CONTOUR
- PROPOSED FLARED END SECTION
- PROPOSED CATCH BASIN/MANHOLE
- PROTECT INLET W/ SILT FENCE SEE DETAIL 1/C500



**ANDERSON**

13605 1st Avenue N. #100  
Plymouth, MN 55441 | [ae-mn.com](http://ae-mn.com)  
P 763.412.4000 | F 763.412.4090  
Anderson Engineering of Minnesota, LLC

## STORMWATER INFRASTRUCTURE IMPROVEMENTS

WOODHILL COUNTRY CLUB  
200 WOODHILL RD  
WAYZATA, MINNESOTA

I HEREBY CERTIFY THAT THIS PLAN, SPECIFICATION, OR REPORT WAS PREPARED BY ME OR UNDER MY DIRECT SUPERVISION AND THAT I AM A DULY LICENSED PROFESSIONAL ENGINEER UNDER THE LAWS OF THE STATE OF MINNESOTA.

PRINT NAME: KYLE STEBBING, PE

SIGNATURE: *K. Stebbing*

DATE: 6/6/2025 LICENSE NO. 61855

#### REVISION LOG

NO.	DATE	DESCRIPTION OF REVISIONS

#### CONSTRUCTION DOCUMENTS

DESIGNED: KS	DRAWN: KS	CHECKED BY: AT
-----------------	--------------	-------------------

#### DRAWING TITLE

## UTILITY & GRADING PLAN

#### DRAWING NO.

**CS103**

PAGE: 12 OF 24

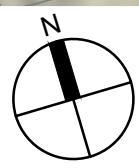
PLOTTED:  
4/21/2025

COMM. NO.  
17701



### 1 UTILITY AND GRADING PLAN NORTH

SCALE: 1"=40'

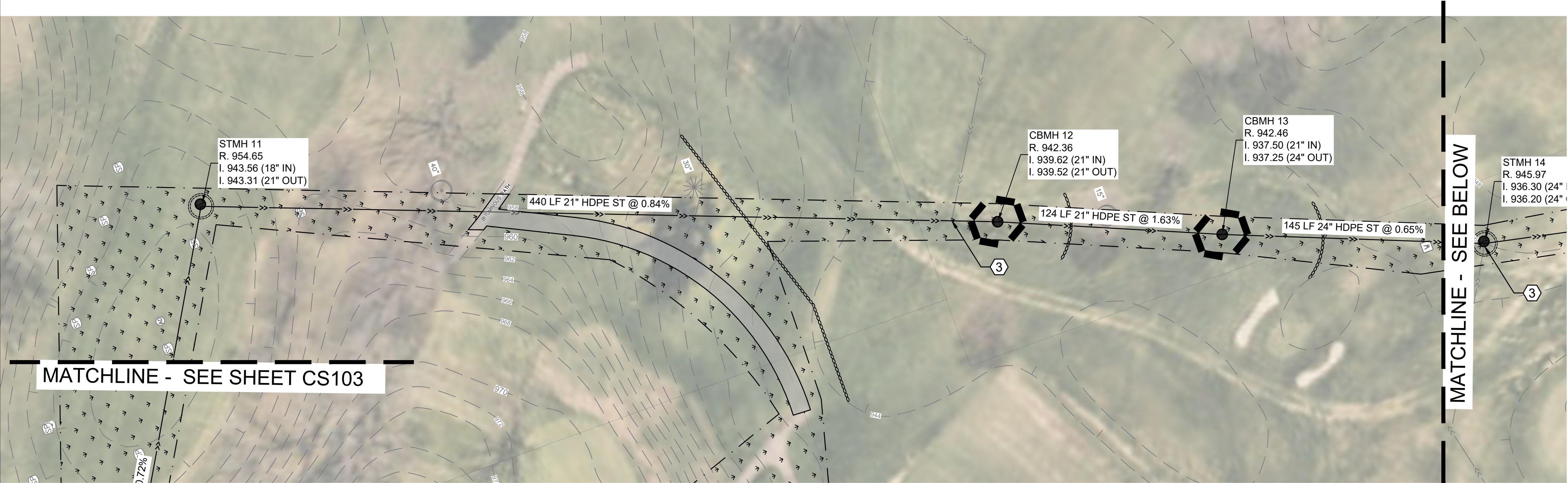


0 40' 80'

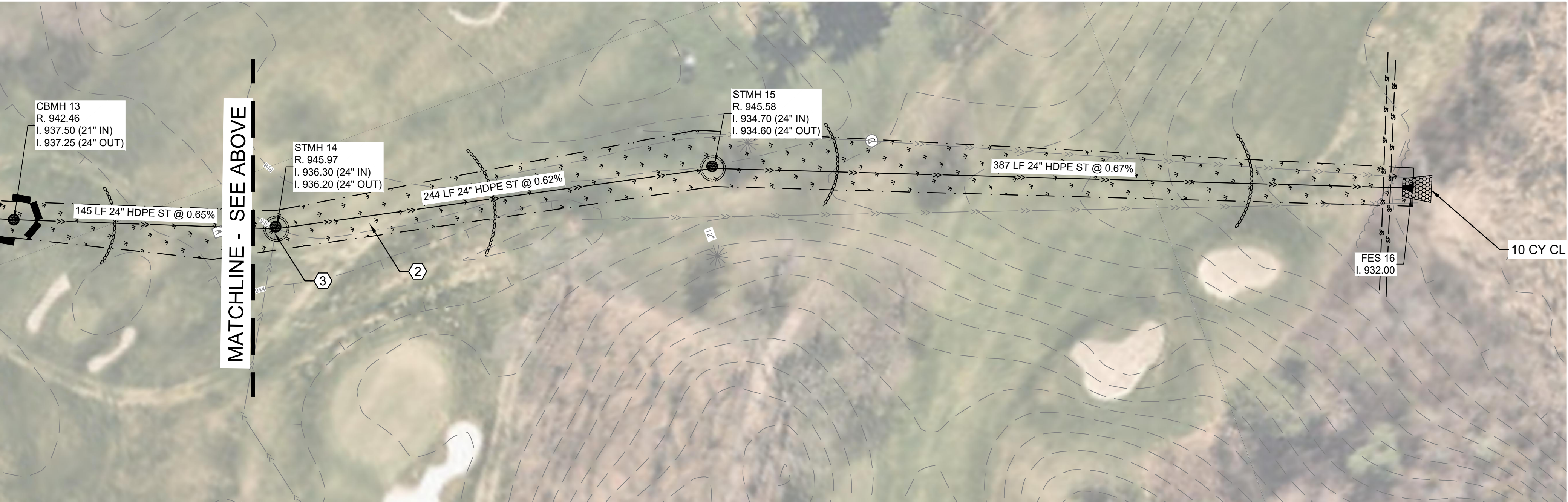
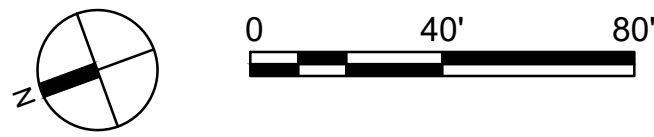
#### KEY MAP



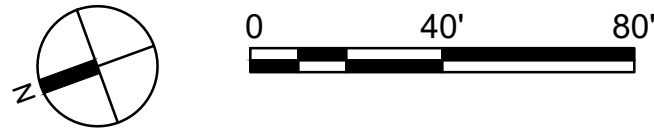
Jun 06, 2025 - 2:48pm  
Xref Filename: 17701\_s\_base\17701\_title Block\17701\_CAD files\01 SHEETS\17701\_C\_SITE.dwg  
Y:\17700\17701 WOODHILL CC - DRAINAGE STUDY - WAYZATA\_07 Civil\_01 CAD files\01 SHEETS\17701\_C\_SITE.dwg  
KStebbing



1 UTILITY AND GRADING PLAN EAST  
SCALE: 1" = 40'



2 UTILITY AND GRADING PLAN EAST  
SCALE: 1" = 40'



## LEGEND

	CONSTRUCTION LIMITS
	PROPOSED BITUMINOUS PAVEMENT
	PROPOSED GRAVEL PAVEMENT
	GRASS SEEDING AREAS
	SILT FENCE
	SEDIMENT CONTROL LOG
	PROPOSED STORM SEWER PIPE
	PROPOSED CONTOUR
	PROPOSED FLARED END SECTION
	PROPOSED CATCH BASIN/MANHOLE
	PROTECT INLET W/ SILT FENCE SEE DETAIL 1/C500

## KEY NOTES

- 1 INSTALL SALVAGED GRAVEL TO MATCH
- 2 REFER TO GOLF COURSE PLANS FOR SEEDING MIXES + ADDITIONAL RESTORATION INFORMATION
- 3 CONNECT EXISTING DRAINAGE LATERAL TO NEW WORK OR COORDINATE NEW DRAINAGE LATERALS WITH THESE PLANS

## GENERAL NOTES

1. UTILITIES SHOWN HERE ARE FOR INFORMATIONAL USE ONLY AND ARE NOT GUARANTEED IN THEIR ACCURACY. VERIFY WORK. NOTIFY ENGINEER OF ANY/ALL DISCREPANCIES IMMEDIATELY.
2. UTILITIES MUST BE LOCATED PRIOR TO EXCAVATION OR GRADING ON ANY SITE. CALL GOPHER SATE ONE CALL AT 1-800-252-1166 AS SOON AS POSSIBLE TO SCHEDULE UTILITY LOCATIONS FOR THIS SITE.
3. PROTECT ALL EXISTING IMPROVEMENT NOT NOTED FOR REMOVAL. CONTRACTOR TO REPAIR/REPLACE DAMAGES DUE TO THEIR WORK.
4. REFERENCE SHEET CP201 TO CP204 FOR STORM SEWER PROFILES. REFERENCE SHEET C500 & C501 FOR CONSTRUCTION DETAILS.
5. PROPOSED PIPE MATERIALS SHALL BE PVC SDR 35 OR DUAL-WALL HDPE MEETING ASTM F2648.



**ANDERSON**

13605 1st Avenue N. #100  
Plymouth, MN 55441 | [ae-mn.com](http://ae-mn.com)  
P 763.412.4000 | F 763.412.4090  
Anderson Engineering of Minnesota, LLC

## STORMWATER INFRASTRUCTURE IMPROVEMENTS

WOODHILL COUNTRY CLUB  
200 WOODHILL RD  
WAYZATA, MINNESOTA

I HEREBY CERTIFY THAT THIS PLAN, SPECIFICATION, OR REPORT WAS PREPARED BY ME OR UNDER MY DIRECT SUPERVISION AND THAT I AM A DULY LICENSED PROFESSIONAL ENGINEER UNDER THE LAWS OF THE STATE OF MINNESOTA.

PRINT NAME: KYLE STEBBING, PE

SIGNATURE: KSteb

DATE: 6/6/2025 LICENSE NO. 61855

## REVISION LOG

NO.	DATE	DESCRIPTION OF REVISIONS

## CONSTRUCTION DOCUMENTS

DESIGNED:	DRAWN:	CHECKED BY:
KS	KS	AT

DRAWING TITLE

## UTILITY & GRADING PLAN

DRAWING NO.

**CS104**

PAGE: 13 OF 24

PLOTTED:  
4/21/2025

COMM. NO.  
17701

KEY MAP



GENERAL NOTES

- UTILITIES SHOWN HERE ARE FOR INFORMATIONAL USE ONLY AND ARE NOT GUARANTEED IN THEIR ACCURACY. VERIFY WORK. NOTIFY ENGINEER OF ANY/ALL DISCREPANCIES IMMEDIATELY.
- UTILITIES MUST BE LOCATED PRIOR TO EXCAVATION OR GRADING ON ANY SITE. CALL GOPHER SATE ONE CALL AT 1-800-252-1166 AS SOON AS POSSIBLE TO SCHEDULE UTILITY LOCATIONS FOR THIS SITE.
- PROTECT ALL EXISTING IMPROVEMENT NOT NOTED FOR REMOVAL. CONTRACTOR TO REPAIR/REPLACE DAMAGES DUE TO THEIR WORK.
- REFERENCE SHEET CP201 TO CP204 FOR STORM SEWER PROFILES. REFERENCE SHEET C500 & C501 FOR CONSTRUCTION DETAILS.
- PROPOSED PIPE MATERIALS SHALL BE PVC SDR 35 OR DUAL-WALL HDPE MEETING ASTM F2648.

KEY NOTES

- INSTALL SALVAGED GRAVEL TO MATCH
- REFER TO GOLF COURSE PLANS FOR SEEING MIXES + ADDITIONAL RESTORATION INFORMATION
- CONNECT EXISTING DRAINAGE LATERAL TO NEW WORK OR COORDINATE NEW DRAINAGE LATERALS WITH THESE PLANS

LEGEND

- CONSTRUCTION LIMITS
- PROPOSED BITUMINOUS PAVEMENT
- PROPOSED GRAVEL PAVEMENT
- GRASS SEEDING AREAS
- SILT FENCE
- SEDIMENT CONTROL LOG
- PROPOSED STORM SEWER PIPE
- PROPOSED CONTOUR
- PROPOSED FLARED END SECTION
- PROPOSED CATCH BASIN/MANHOLE
- PROTECT INLET W/ SILT FENCE SEE DETAIL 1/C500



ANDERSON

13605 1st Avenue N. #100  
Plymouth, MN 55441 | [ae-mn.com](http://ae-mn.com)  
P 763.412.4000 | F 763.412.4090  
Anderson Engineering of Minnesota, LLC

STORMWATER  
INFRASTRUCTURE  
IMPROVEMENTS

WOODHILL COUNTRY CLUB  
200 WOODHILL RD  
WAYZATA, MINNESOTA

I HEREBY CERTIFY THAT THIS PLAN, SPECIFICATION, OR REPORT WAS PREPARED BY ME OR UNDER MY DIRECT SUPERVISION AND THAT I AM A DULY LICENSED PROFESSIONAL ENGINEER UNDER THE LAWS OF THE STATE OF MINNESOTA.

PRINT NAME: KYLE STEBBING, PE

SIGNATURE: *Kyle Stebbing*

DATE: 6/6/2025 LICENSE NO. 61855

REVISION LOG

NO.	DATE	DESCRIPTION OF REVISIONS

CONSTRUCTION DOCUMENTS

DESIGNED: KS	DRAWN: KS	CHECKED BY: AT
-----------------	--------------	-------------------

DRAWING TITLE

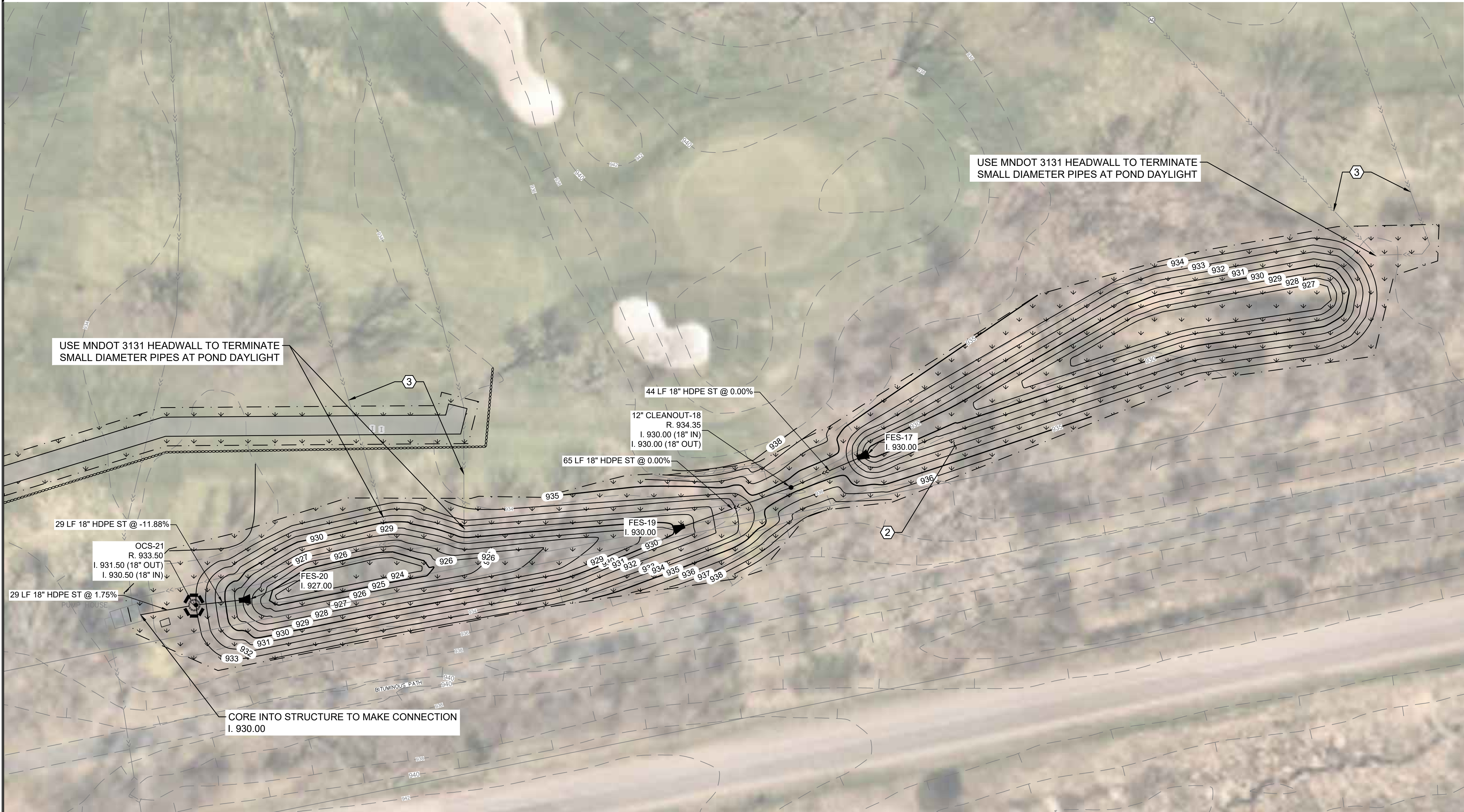
UTILITY &  
GRADING PLAN

DRAWING NO.

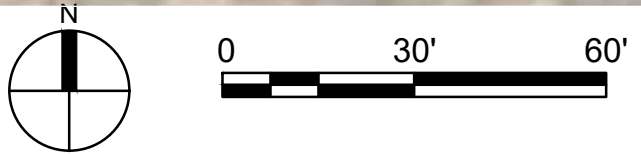
CS105

PAGE: 14 OF 24

PLOTTED: 4/21/2025	COMM. NO. 17701
-----------------------	--------------------



1 UTILITY AND GRADING PLAN SOUTHEAST  
SCALE: 1"=30'



KEY MAP

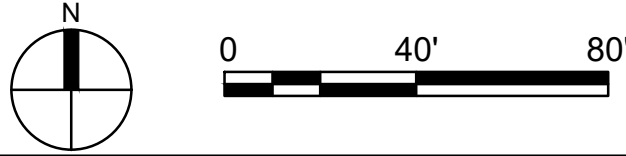


Jun 06, 2025 - 2:48pm  
Xref Filename: 17701\_s\_base  
KStebbing  
Y:\17700\17701 WOODHILL CC - DRAINAGE STUDY - WAYZATA\_07 Civil\_01 CAD files\_01 SHEETS\17701\_C\_SITE.dwg  
Y:\17700\17701 WOODHILL CC - DRAINAGE STUDY - WAYZATA\_07 Civil\_01 CAD files\_01 SHEETS\17701\_C\_SITE.dwg

Jun 06, 2025 - 2:48pm  
Xref Filename: 17701\_s\_base\17701\_title Block\17701\_CAD files\01 SHEETS\17701\_C\_SITE.dwg  
Y:\17700\17701 WOODHILL CC - DRAINAGE STUDY - WAYZATA\_07 Civil\_01 CAD files\_01 SHEETS\17701\_C\_SITE.dwg  
KStebbing  
Title Block\17701\_CAD files\_01 SHEETS\17701\_C\_SITE.dwg



1 CART PATH PLAN WEST  
SCALE: 1"=40'



LEGEND

- CONSTRUCTION LIMITS
- PROPOSED BITUMINOUS PAVEMENT
- PROPOSED GRAVEL PAVEMENT
- GRASS SEEDING AREAS
- SF SILT FENCE
- SEDIMENT CONTROL LOG
- PROPOSED STORM SEWER PIPE
- PROPOSED CONTOUR
- PROPOSED FLARED END SECTION
- PROPOSED CATCH BASIN/MANHOLE
- PROTECT INLET W/ SILT FENCE SEE DETAIL 1/C500

KEY NOTES

- INSTALL SALVAGED GRAVEL TO MATCH
- REFER TO GOLF COURSE PLANS FOR SEEDING MIXES + ADDITIONAL RESTORATION INFORMATION
- CONNECT EXISTING DRAINAGE LATERAL TO NEW WORK OR COORDINATE NEW DRAINAGE LATERALS WITH THESE PLANS
- POTENTIAL FOR NON-COURSE RELATED UTILITIES EXISTS IN THIS AREA. CONTRACTOR TO EMPLOY PRIVATE UTILITY LOCATOR PRIOR TO BEGINNING WORK.

GENERAL NOTES

- UTILITIES SHOWN HERE ARE FOR INFORMATIONAL USE ONLY AND ARE NOT GUARANTEED IN THEIR ACCURACY. VERIFY WORK. NOTIFY ENGINEER OF ANY/ALL DISCREPANCIES IMMEDIATELY.
- UTILITIES MUST BE LOCATED PRIOR TO EXCAVATION OR GRADING ON ANY SITE. CALL GOPHER SATE ONE CALL AT 1-800-252-1166 AS SOON AS POSSIBLE TO SCHEDULE UTILITY LOCATIONS FOR THIS SITE.
- PROTECT ALL EXISTING IMPROVEMENT NOT NOTED FOR REMOVAL. CONTRACTOR TO REPAIR/REPLACE DAMAGES DUE TO THEIR WORK.
- REFERENCE SHEET CP201 TO CP204 FOR STORM SEWER PROFILES. REFERENCE SHEET C500 & C501 FOR CONSTRUCTION DETAILS.
- PROPOSED PIPE MATERIALS SHALL BE PVC SDR 35 OR DUAL-WALL HDPE MEETING ASTM F2648.



ANDERSON

13605 1st Avenue N. #100  
Plymouth, MN 55441 | [ae-mn.com](http://ae-mn.com)  
P 763.412.4000 | F 763.412.4090  
Anderson Engineering of Minnesota, LLC

STORMWATER  
INFRASTRUCTURE  
IMPROVEMENTS

WOODHILL COUNTRY CLUB  
200 WOODHILL RD  
WAYZATA, MINNESOTA

I HEREBY CERTIFY THAT THIS PLAN, SPECIFICATION, OR REPORT WAS PREPARED BY ME OR UNDER MY DIRECT SUPERVISION AND THAT I AM A DULY LICENSED PROFESSIONAL ENGINEER UNDER THE LAWS OF THE STATE OF MINNESOTA.

PRINT NAME: KYLE STEBBING, PE

SIGNATURE: *KStebbing*

DATE: 6/6/2025 LICENSE NO. 61855

REVISION LOG

NO.	DATE	DESCRIPTION OF REVISIONS

CONSTRUCTION DOCUMENTS

DESIGNED: KS	DRAWN: KS	CHECKED BY: AT
-----------------	--------------	-------------------

DRAWING TITLE

CART PATH  
PLAN

DRAWING NO.

CS106

PAGE: 15 OF 24

PLOTTED:  
4/21/2025

COMM. NO.  
17701

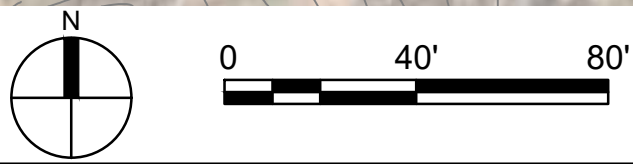
KEY MAP



Jun 06, 2025 - 2:48pm  
Xref Filename: 17701\_s\_base\17701\_title Block\17701\_c\_base\HemCoParcels\_ByCity  
Y:\17700\17701 WOODHILL CC - DRAINAGE STUDY - WAYZATA\_07 Civil\01 CAD files\01 SHEETS\17701\_C\_SITE.dwg



1 CART PATH PLAN EAST  
SCALE: 1"=40'



LEGEND

- CONSTRUCTION LIMITS
- PROPOSED BITUMINOUS PAVEMENT
- PROPOSED GRAVEL PAVEMENT
- GRASS SEEDING AREAS
- SF SILT FENCE
- SEDIMENT CONTROL LOG
- PROPOSED STORM SEWER PIPE
- PROPOSED CONTOUR
- PROPOSED FLARED END SECTION
- PROPOSED CATCH BASIN/MANHOLE
- PROTECT INLET W/ SILT FENCE SEE DETAIL 1/C500

KEY NOTES

- 1. INSTALL SALVAGED GRAVEL TO MATCH
- 2. REFER TO GOLF COURSE PLANS FOR SEEDING MIXES + ADDITIONAL RESTORATION INFORMATION
- 3. CONNECT EXISTING DRAINAGE LATERAL TO NEW WORK OR COORDINATE NEW DRAINAGE LATERALS WITH THESE PLANS
- 4. POTENTIAL FOR NON-COURSE RELATED UTILITIES EXISTS IN THIS AREA. CONTRACTOR TO EMPLOY PRIVATE UTILITY LOCATOR PRIOR TO BEGINNING WORK.

GENERAL NOTES

- 1. UTILITIES SHOWN HERE ARE FOR INFORMATIONAL USE ONLY AND ARE NOT GUARANTEED IN THEIR ACCURACY. VERIFY WORK. NOTIFY ENGINEER OF ANY/ALL DISCREPANCIES IMMEDIATELY.
- 2. UTILITIES MUST BE LOCATED PRIOR TO EXCAVATION OR GRADING ON ANY SITE. CALL GOPHER SATE ONE CALL AT 1-800-252-1166 AS SOON AS POSSIBLE TO SCHEDULE UTILITY LOCATIONS FOR THIS SITE.
- 3. PROTECT ALL EXISTING IMPROVEMENT NOT NOTED FOR REMOVAL. CONTRACTOR TO REPAIR/REPLACE DAMAGES DUE TO THEIR WORK.
- 4. REFERENCE SHEET CP201 TO CP204 FOR STORM SEWER PROFILES. REFERENCE SHEET C500 & C501 FOR CONSTRUCTION DETAILS.
- 5. PROPOSED PIPE MATERIALS SHALL BE PVC SDR 35 OR DUAL-WALL HDPE MEETING ASTM F2648.

13605 1st Avenue N. #100  
Plymouth, MN 55441 | [ae-mn.com](mailto:ae-mn.com)  
P 763.412.4000 | F 763.412.4090  
Anderson Engineering of Minnesota, LLC

STORMWATER  
INFRASTRUCTURE  
IMPROVEMENTS

WOODHILL COUNTRY CLUB  
200 WOODHILL RD  
WAYZATA, MINNESOTA

I HEREBY CERTIFY THAT THIS PLAN, SPECIFICATION, OR REPORT WAS PREPARED BY ME OR UNDER MY DIRECT SUPERVISION AND THAT I AM A DULY LICENSED PROFESSIONAL ENGINEER UNDER THE LAWS OF THE STATE OF MINNESOTA.

PRINT NAME: KYLE STEBBING, PE

SIGNATURE:

DATE: 6/6/2025 LICENSE NO. 61855

REVISION LOG

NO.	DATE	DESCRIPTION OF REVISIONS

CONSTRUCTION DOCUMENTS

DESIGNED: KS	DRAWN: KS	CHECKED BY: AT
-----------------	--------------	-------------------

DRAWING TITLE

CART PATH  
PLAN

DRAWING NO.

CS107

PAGE: 16 OF 24

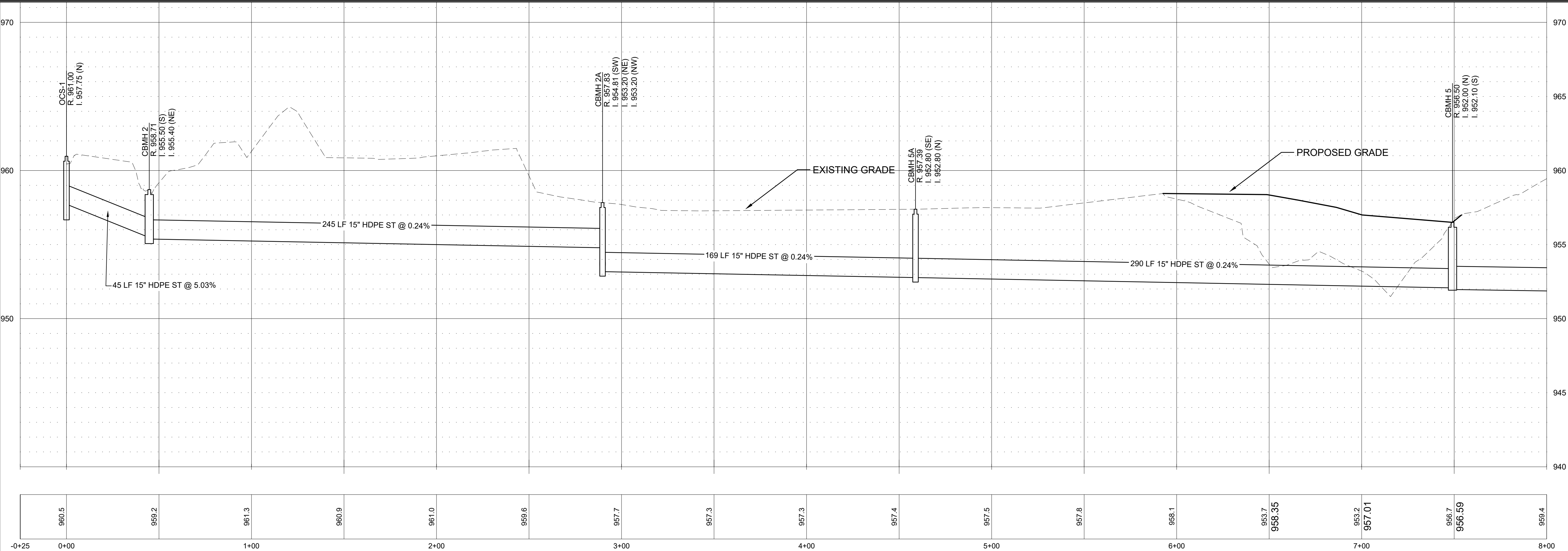
PLOTTED:  
4/21/2025

COMM. NO.  
17701

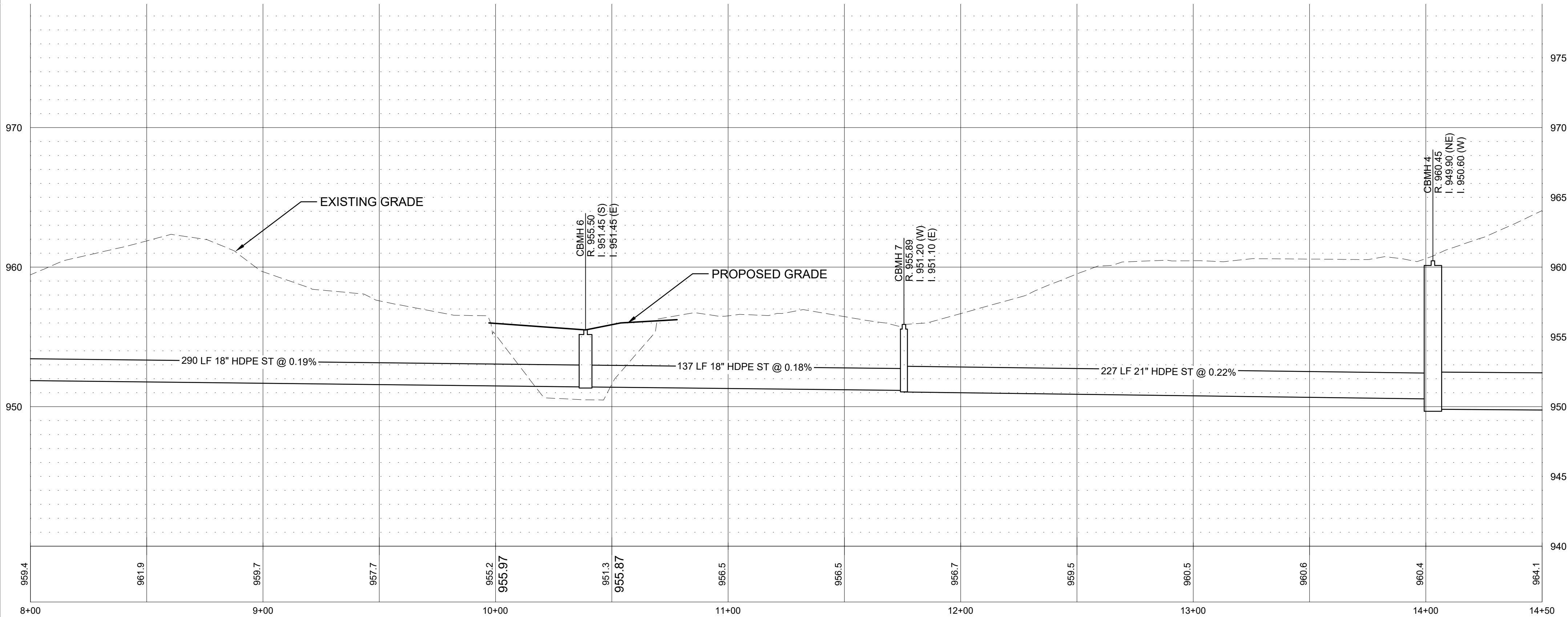
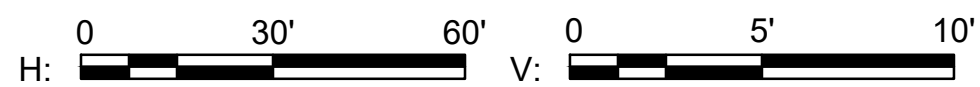
KEY MAP



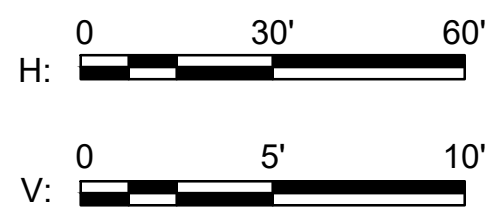
Jun 06, 2025 - 2:53pm  
Xref Filename: 17701\_c\_base\17701\_title block\17701\_s\_base\HemCoParcels\_ByCity  
Y:\17700\17701 WOODHILL CC - DRAINAGE STUDY - WAYZATA\_07 Civil\_01 CAD files\_01 SHEETS\17701\_C\_PROF.dwg



1 STORM SEWER PROFILE STA. 0+00' TO 8+00'  
SCALE: HORIZONTAL: 1"=30', VERTICAL: 1"=5'



2 STORM SEWER PROFILE STA. 8+00' TO 14+50.00'  
SCALE: HORIZONTAL: 1"=30', VERTICAL: 1"=5'



ANDERSON

13605 1st Avenue N. #100  
Plymouth, MN 55441 | [ae-mn.com](http://ae-mn.com)  
P 763.412.4000 | F 763.412.4090  
Anderson Engineering of Minnesota, LLC

## STORMWATER INFRASTRUCTURE IMPROVEMENTS

WOODHILL COUNTRY CLUB  
200 WOODHILL RD  
WAYZATA, MINNESOTA

I HEREBY CERTIFY THAT THIS PLAN, SPECIFICATION, OR REPORT WAS PREPARED BY ME OR UNDER MY DIRECT SUPERVISION AND THAT I AM A DULY LICENSED PROFESSIONAL ENGINEER UNDER THE LAWS OF THE STATE OF MINNESOTA.

PRINT NAME: KYLE STEBBING, PE

SIGNATURE: *K. Stebbing*

DATE: 6/6/2025 LICENSE NO. 61855

### REVISION LOG

NO.	DATE	DESCRIPTION OF REVISIONS

### CONSTRUCTION DOCUMENTS

DESIGNED: KS	DRAWN: KS	CHECKED BY: AT
-----------------	--------------	-------------------

DRAWING TITLE

STORM SEWER  
PROFILE OCS 1  
TO FES 8

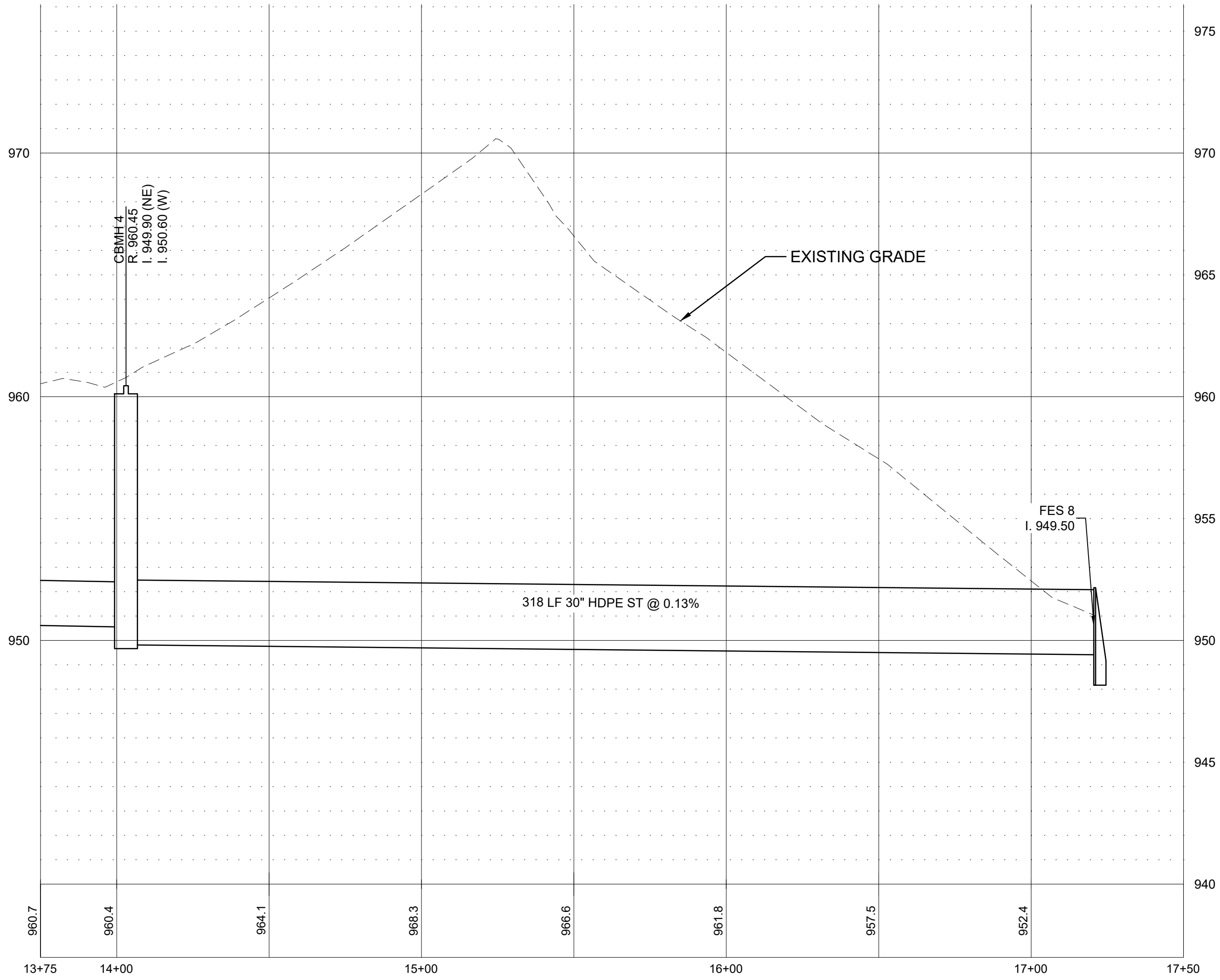
DRAWING NO.

CP201

PAGE: 17 OF 24

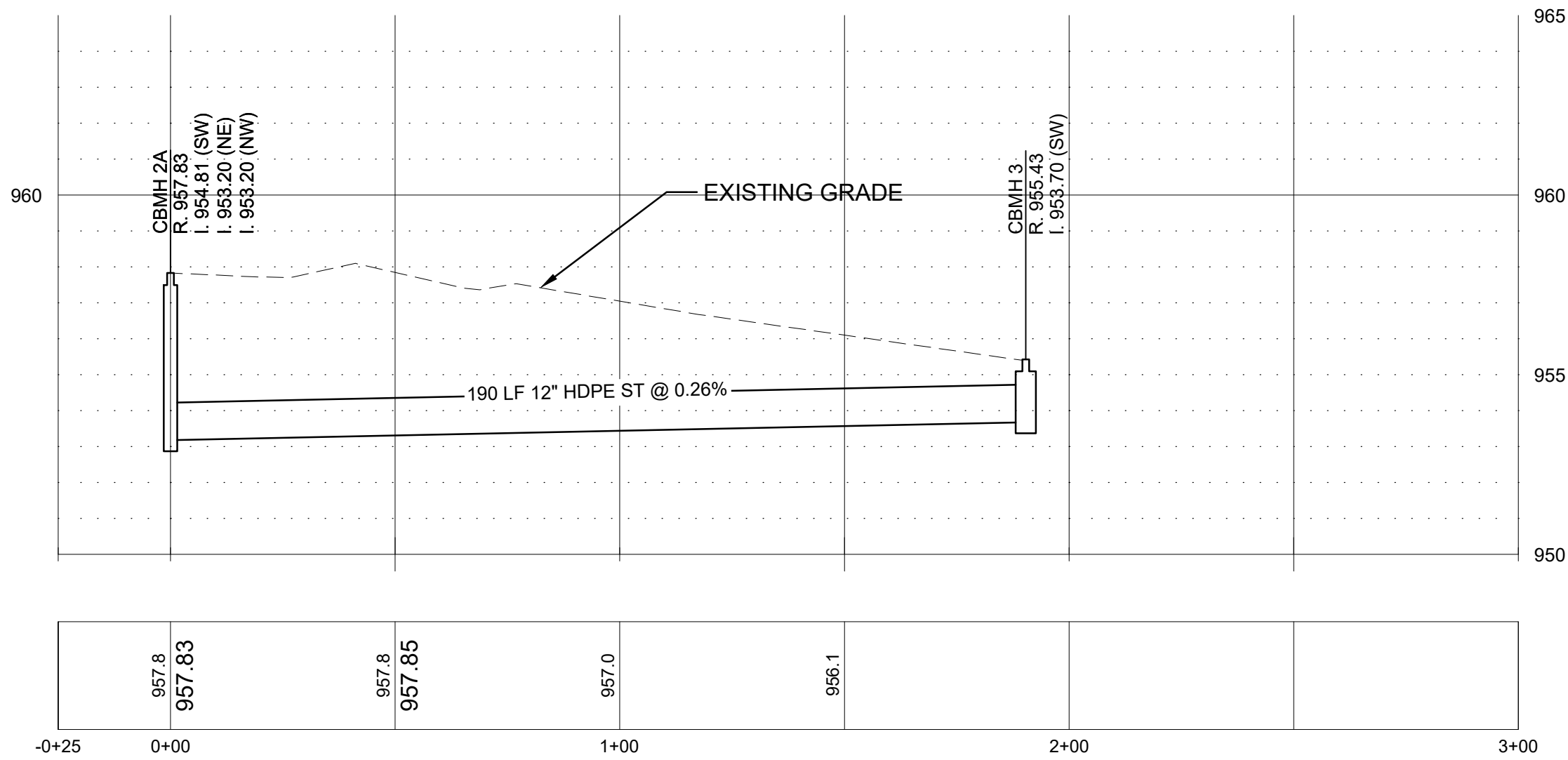
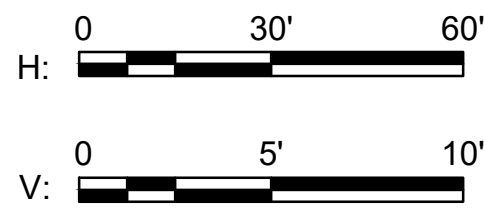
PLOTTED: 4/21/2025	COMM. NO. 17701
-----------------------	--------------------

Jun 06, 2025 - 2:54pm  
Xref Filename: \\17701\_c\_base\\17701\_title Block\\17701\_s\_base\\HemCoParcels\_ByCity\\  
Y:\\17700\\17701 WOODHILL CC - DRAINAGE STUDY - WAYZATA\\\_07 Civil\\\_01 CAD files\\\_01 SHEETS\\17701\_c\_PROF.dwg



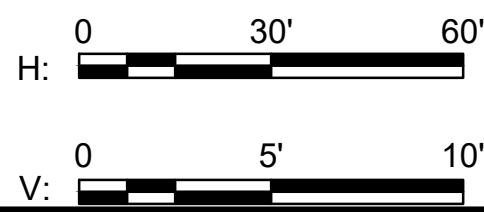
1 STORM SEWER PROFILE STA. 13+75' TO STA. 17+50'

SCALE: HORIZONTAL: 1"=30', VERTICAL: 1"=5'



1 STORM SEWER PROFILE CBMH 3 - CBMH 2A

SCALE: HORIZONTAL: 1"=30', VERTICAL: 1"=5'



ANDERSON

13605 1st Avenue N. #100  
Plymouth, MN 55441 | [ae-mn.com](http://ae-mn.com)  
P 763.412.4000 | F 763.412.4090  
Anderson Engineering of Minnesota, LLC

## STORMWATER INFRASTRUCTURE IMPROVEMENTS

WOODHILL COUNTRY CLUB  
200 WOODHILL RD  
WAYZATA, MINNESOTA

I HEREBY CERTIFY THAT THIS PLAN, SPECIFICATION, OR REPORT WAS PREPARED BY ME OR UNDER MY DIRECT SUPERVISION AND THAT I AM A DULY LICENSED PROFESSIONAL ENGINEER UNDER THE LAWS OF THE STATE OF MINNESOTA.

PRINT NAME: KYLE STEBBING, PE

SIGNATURE: *K. Stebbing*

DATE: 6/6/2025 LICENSE NO. 61855

### REVISION LOG

NO.	DATE	DESCRIPTION OF REVISIONS

### CONSTRUCTION DOCUMENTS

DESIGNED: KS	DRAWN: KS	CHECKED BY: AT
-----------------	--------------	-------------------

### DRAWING TITLE

STORM SEWER  
PROFILE OCS 1  
TO FES 8

DRAWING NO.

CP202

PAGE: 18 OF 24

PLOTTED: 4/21/2025	COMM. NO. 17701
-----------------------	--------------------



ANDERSON

13605 1st Avenue N. #100  
Plymouth, MN 55441 | [ae-mn.com](mailto:ae-mn.com)  
P 763.412.4000 | F 763.412.4090  
Anderson Engineering of Minnesota, LLC

## STORMWATER INFRASTRUCTURE IMPROVEMENTS

WOODHILL COUNTRY CLUB  
200 WOODHILL RD  
WAYZATA, MINNESOTA

I HEREBY CERTIFY THAT THIS PLAN, SPECIFICATION, OR REPORT WAS PREPARED BY ME OR UNDER MY DIRECT SUPERVISION AND THAT I AM A DULY LICENSED PROFESSIONAL ENGINEER UNDER THE LAWS OF THE STATE OF MINNESOTA.

PRINT NAME: KYLE STEBBING, PE

SIGNATURE: *Kyle Stebbing*

DATE: 6/6/2025 LICENSE NO. 61855

### REVISION LOG

NO.	DATE	DESCRIPTION OF REVISIONS

### CONSTRUCTION DOCUMENTS

DESIGNED: KS	DRAWN: KS	CHECKED BY: AT
-----------------	--------------	-------------------

### DRAWING TITLE

## STORM SEWER PROFILE OCS 9 TO FES 16

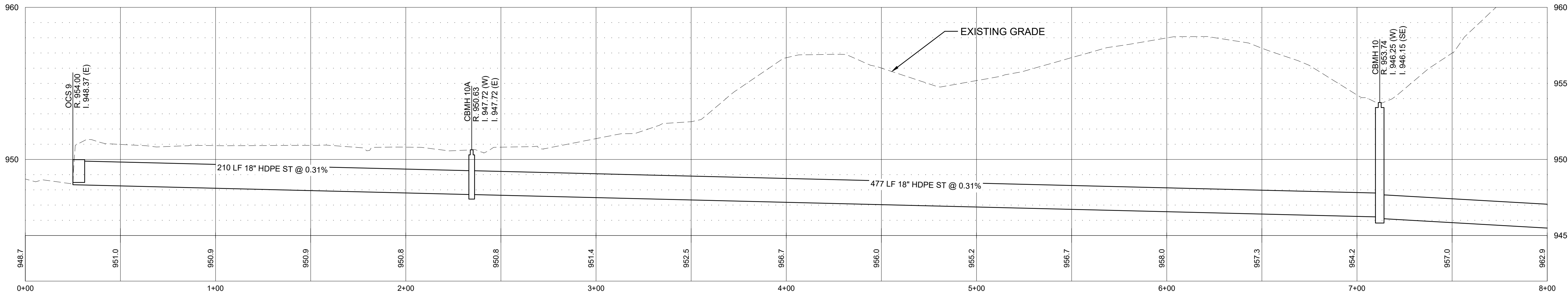
DRAWING NO.

CP203

PAGE: 19 OF 24

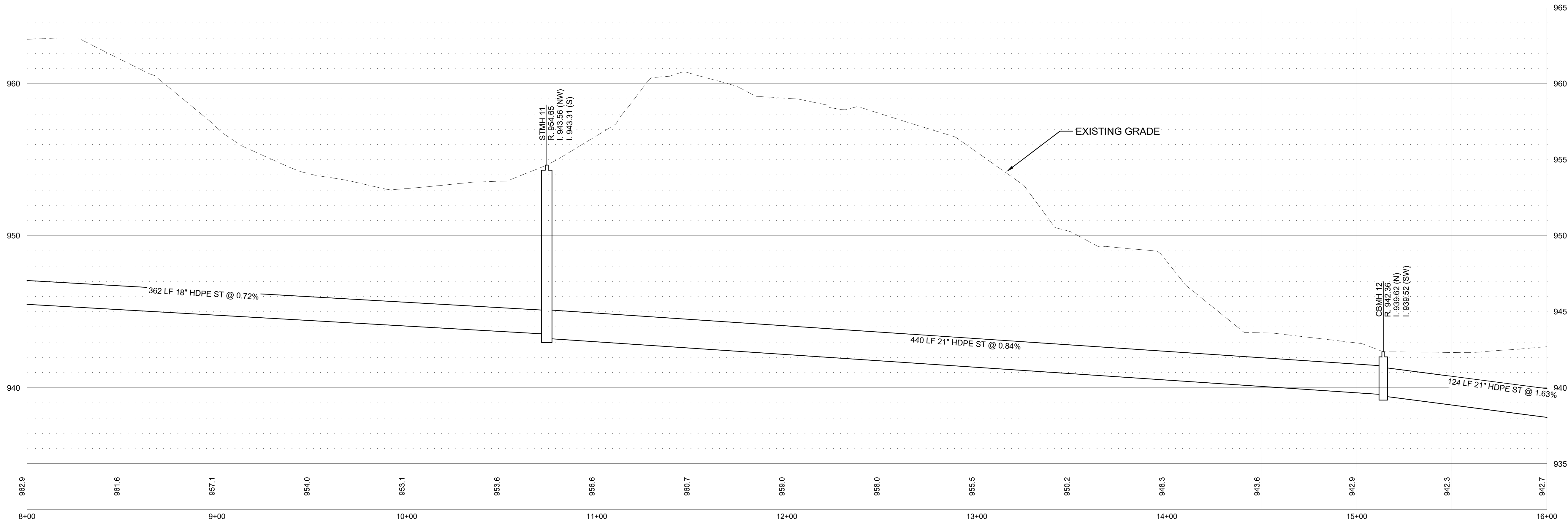
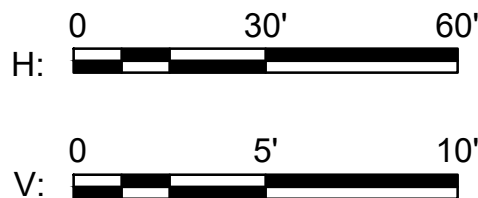
PLOTTED:  
4/21/2025

COMM. NO.  
17701



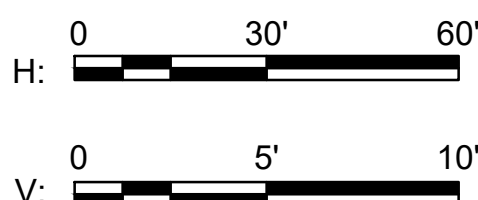
### 1 STORM SEWER PROFILE STA. 0+00' TO STA. 8+00.00'

SCALE: HORIZONTAL: 1"=30', VERTICAL: 1"=5'



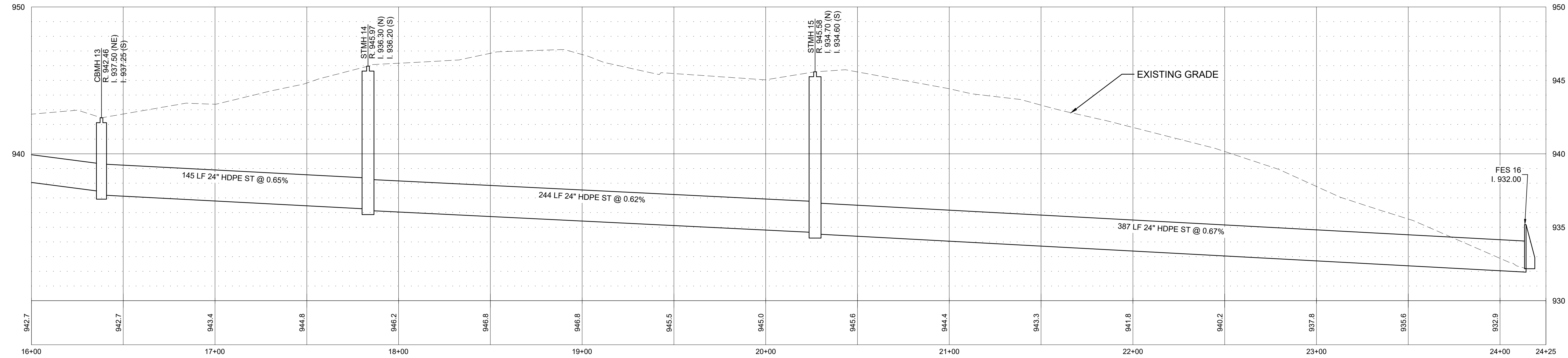
### 2 STORM SEWER PROFILE STA. 8+00' TO STA. 16+00'

SCALE: HORIZONTAL: 1"=30', VERTICAL: 1"=5'



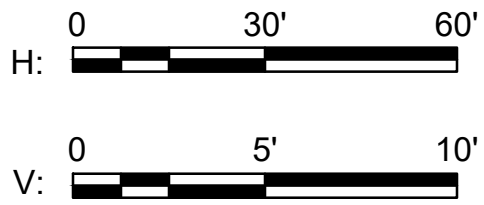
Jun 06, 2025 - 2:54pm  
Xref Filename: 17701\_c\_base\17701\_title Block\17701\_s\_base\HemCoParcels\_ByCity  
Y:\17700\17701 WOODHILL CC - DRAINAGE STUDY - WAYZATA\_07 Civil\_01 CAD files\01 SHEETS\17701\_C\_PROF.dwg

Jun 06, 2025 - 2:54pm  
Xref Filename: \\17701\_c\_base\\17701\_title Block\\17701\_s\_base\\HemCoParcels\_ByCity\\  
Y:\\17700\\17701 WOODHILL CC - DRAINAGE STUDY - WAYZATA\\07 Civil\\01 CAD files\\01 SHEETS\\17701\_c\_PROF.dwg



1 STORM SEWER PROFILE STA. 16+00' TO STA. 24+25.00'

SCALE: HORIZONTAL: 1"=30', VERTICAL: 1"=5'



ANDERSON

13605 1st Avenue N. #100  
Plymouth, MN 55441 | [ae-mn.com](http://ae-mn.com)  
P 763.412.4000 | F 763.412.4090  
Anderson Engineering of Minnesota, LLC

## STORMWATER INFRASTRUCTURE IMPROVEMENTS

WOODHILL COUNTRY CLUB  
200 WOODHILL RD  
WAYZATA, MINNESOTA

I HEREBY CERTIFY THAT THIS PLAN, SPECIFICATION, OR REPORT WAS PREPARED BY ME OR UNDER MY DIRECT SUPERVISION AND THAT I AM A DULY LICENSED PROFESSIONAL ENGINEER UNDER THE LAWS OF THE STATE OF MINNESOTA.

PRINT NAME: KYLE STEBBING, PE

SIGNATURE: *Kyle Stebbing*

DATE: 6/6/2025 LICENSE NO. 61855

### REVISION LOG

NO.	DATE	DESCRIPTION OF REVISIONS

### CONSTRUCTION DOCUMENTS

DESIGNED: KS	DRAWN: KS	CHECKED BY: AT
-----------------	--------------	-------------------

DRAWING TITLE

STORM SEWER  
PROFILE OCS 9  
TO FES 16

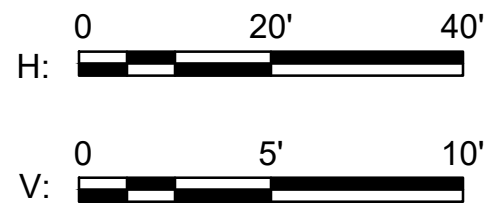
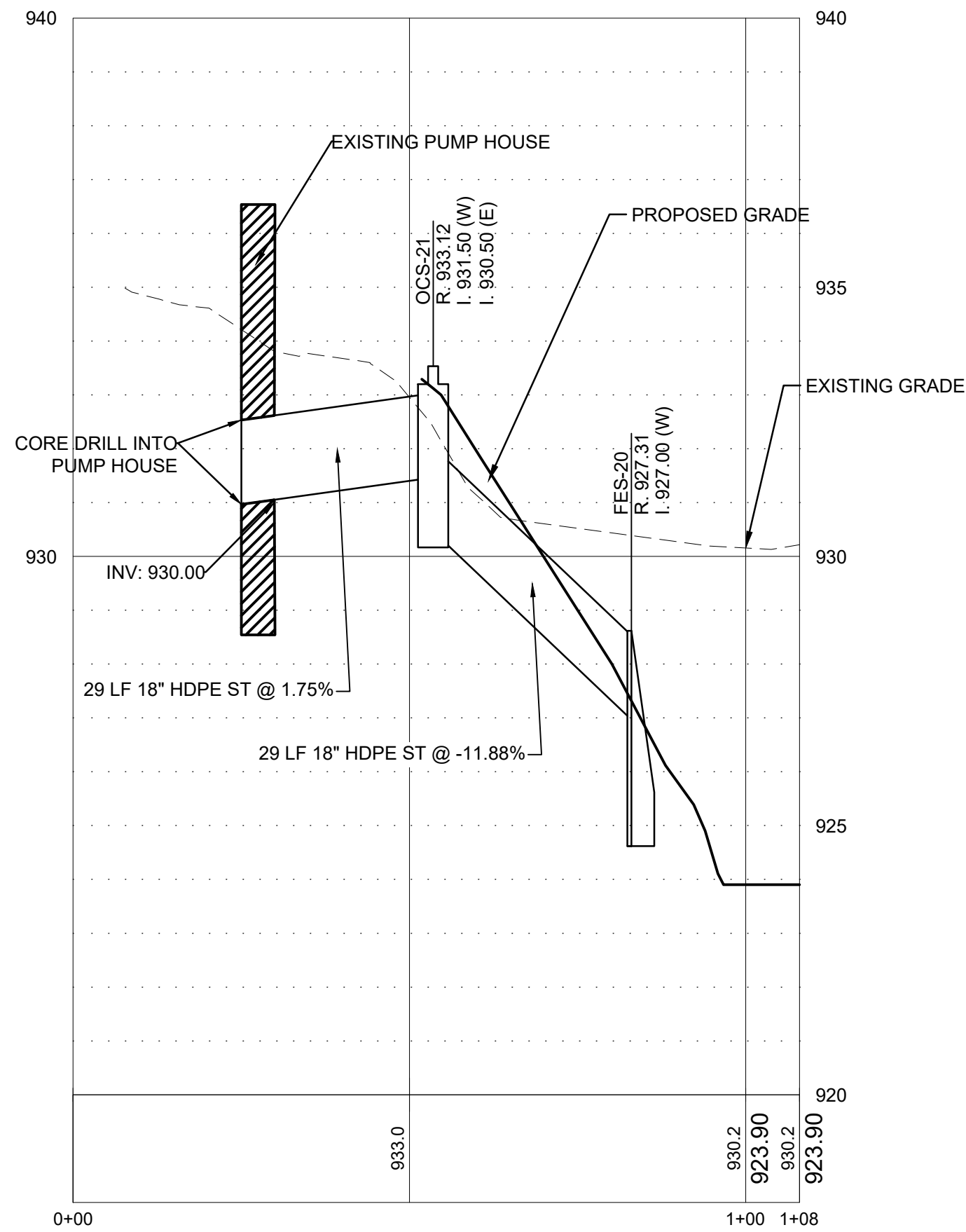
DRAWING NO.

CP204

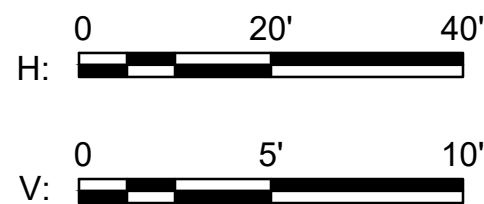
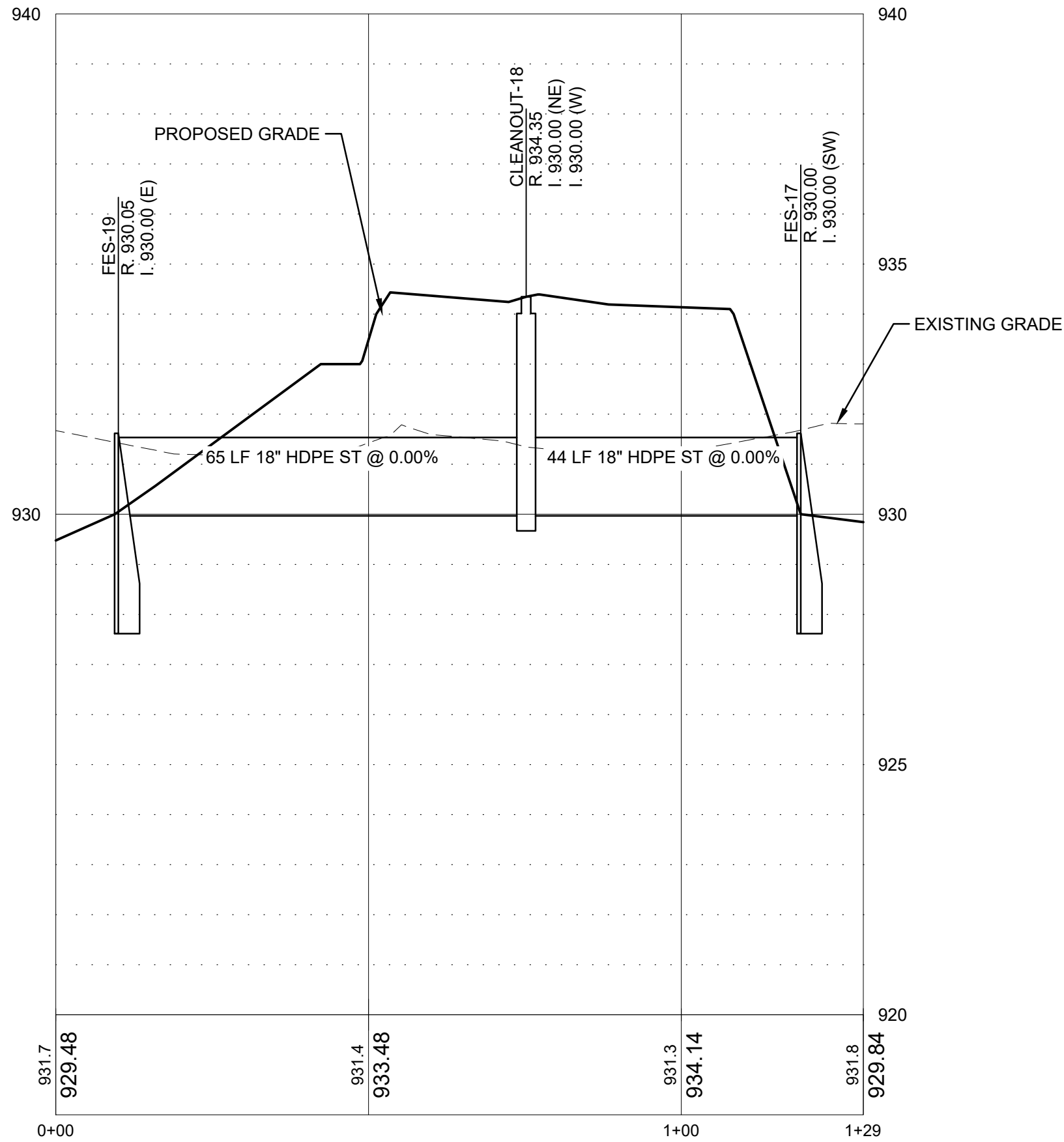
PAGE: 20 OF 24

PLOTTED: 4/21/2025	COMM. NO. 17701
-----------------------	--------------------

Jun 06, 2025 - 2:54pm  
Xref Filename: Y:\17700\17701\WOODHILL CC - DRAINAGE STUDY - WAYZATA\17701\_s\_base\17701\_title Block\17701\_s\_base\HemCoParcels\_ByCity.dwg  
Y:\17700\17701\WOODHILL CC - DRAINAGE STUDY - WAYZATA\07 Civil\01 CAD files\01 SHEETS\17701\_C\_PROF.dwg



1 STORM SEWER PROFILE FES-20 TO PUMP HOUSE  
SCALE: HORIZONTAL: 1"=20', VERTICAL: 1"=5'



2 STORM SEWER PROFILE FES-17 TO FES-19  
SCALE: HORIZONTAL: 1"=20', VERTICAL: 1"=5'



ANDERSON

13605 1st Avenue N. #100  
Plymouth, MN 55441 | [ae-mn.com](http://ae-mn.com)  
P 763.412.4000 | F 763.412.4090  
Anderson Engineering of Minnesota, LLC

## STORMWATER INFRASTRUCTURE IMPROVEMENTS

WOODHILL COUNTRY CLUB  
200 WOODHILL RD  
WAYZATA, MINNESOTA

I HEREBY CERTIFY THAT THIS PLAN, SPECIFICATION, OR REPORT WAS PREPARED BY ME OR UNDER MY DIRECT SUPERVISION AND THAT I AM A DULY LICENSED PROFESSIONAL ENGINEER UNDER THE LAWS OF THE STATE OF MINNESOTA.

PRINT NAME: KYLE STEBBING, PE

SIGNATURE: *Kyle Stebbing*

DATE: 6/6/2025 LICENSE NO. 61855

### REVISION LOG

NO.	DATE	DESCRIPTION OF REVISIONS

### CONSTRUCTION DOCUMENTS

DESIGNED: KS	DRAWN: KS	CHECKED BY: AT
-----------------	--------------	-------------------

### DRAWING TITLE

## STORM SEWER PROFILES - PUMP HOUSE

### DRAWING NO.

CP205

PAGE: 21 OF 24

PLOTTED: 4/21/2025	COMM. NO. 17701
-----------------------	--------------------



ANDERSON

13605 1st Avenue N. #100  
Plymouth, MN 55441 | [ae-mn.com](http://ae-mn.com)  
P 763.412.4000 | F 763.412.4090  
Anderson Engineering of Minnesota, LLC

## STORMWATER INFRASTRUCTURE IMPROVEMENTS

WOODHILL COUNTRY CLUB  
200 WOODHILL RD  
WAYZATA, MINNESOTA

I HEREBY CERTIFY THAT THIS PLAN, SPECIFICATION, OR REPORT WAS PREPARED BY ME OR UNDER MY DIRECT SUPERVISION AND THAT I AM A DULY LICENSED PROFESSIONAL ENGINEER UNDER THE LAWS OF THE STATE OF MINNESOTA.

PRINT NAME: KYLE STEBBING, PE

SIGNATURE: *K. Stebbing*

DATE: 6/6/2025 LICENSE NO. 61855

### REVISION LOG

NO.	DATE	DESCRIPTION OF REVISIONS

### CONSTRUCTION DOCUMENTS

DESIGNED: KS	DRAWN: KS	CHECKED BY: AT
-----------------	--------------	-------------------

DRAWING TITLE

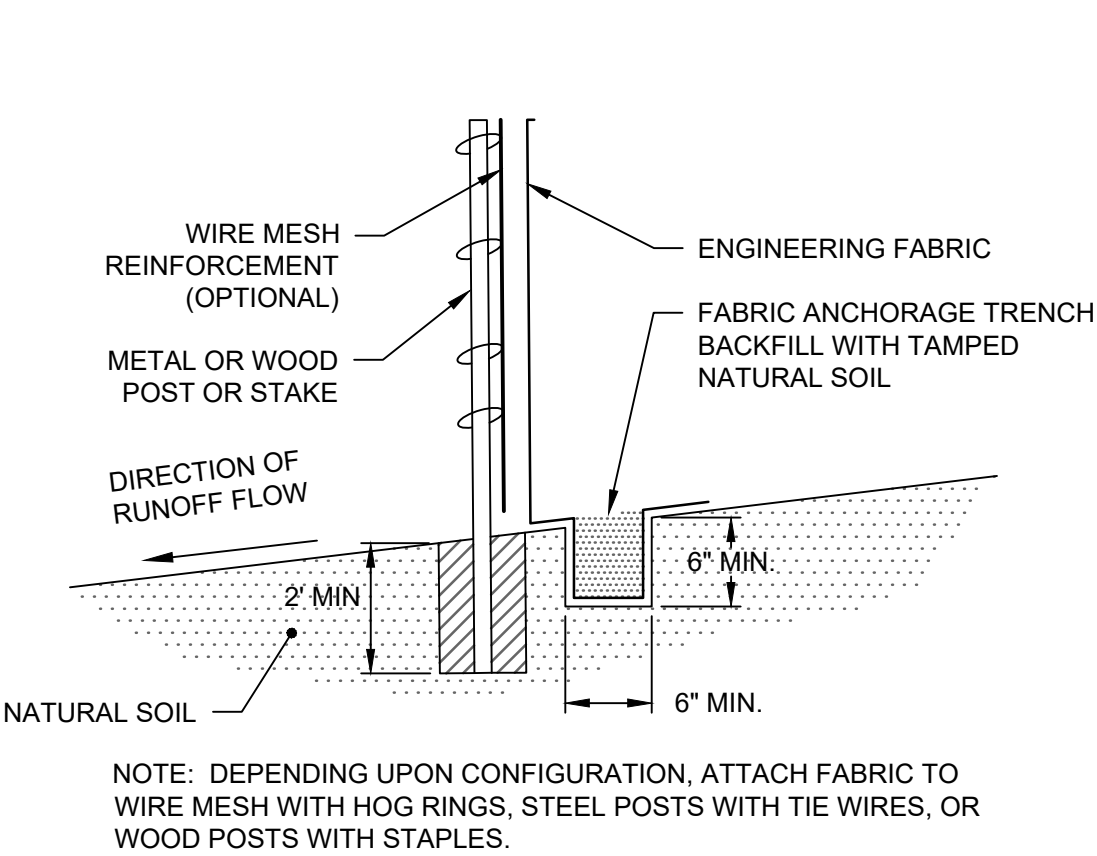
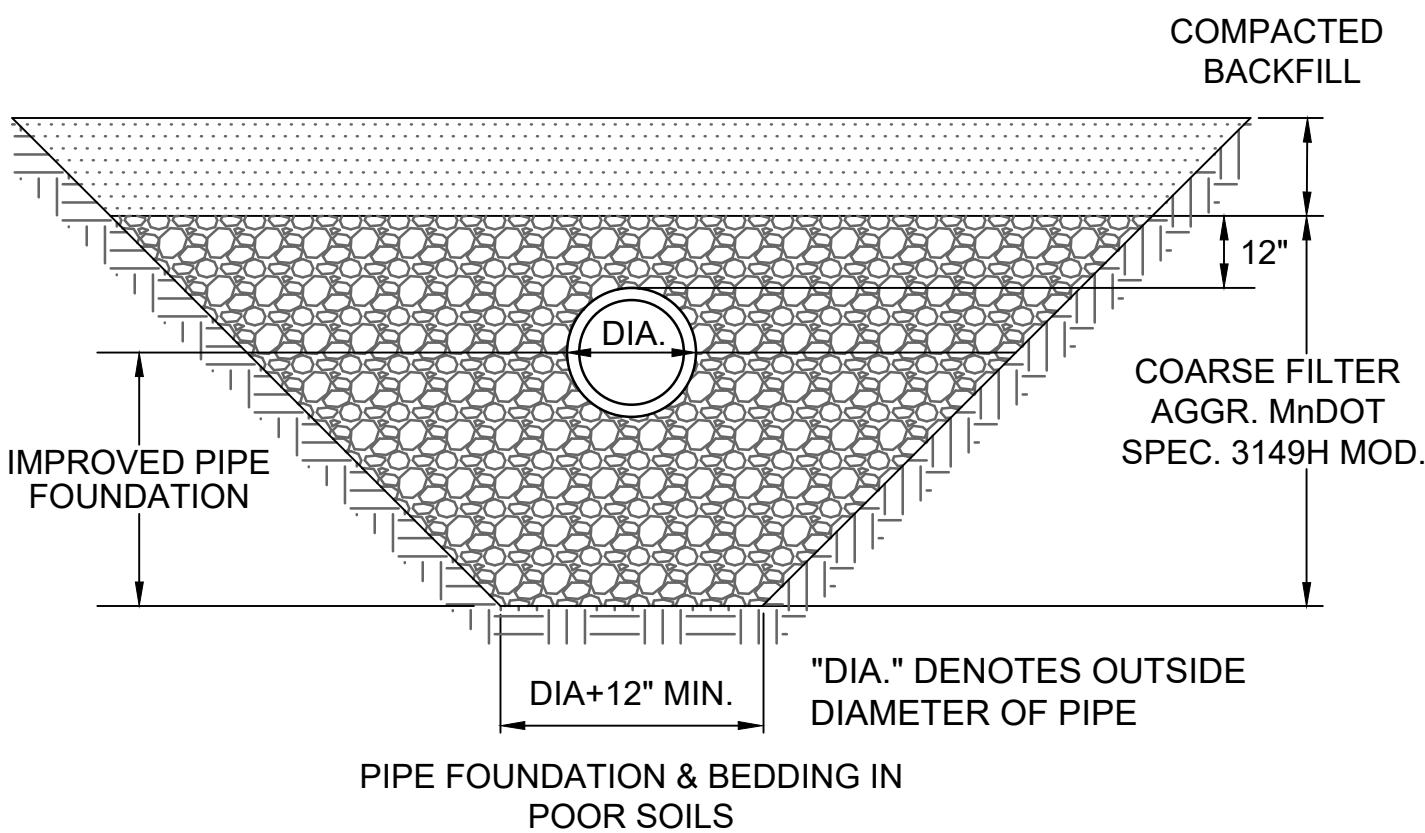
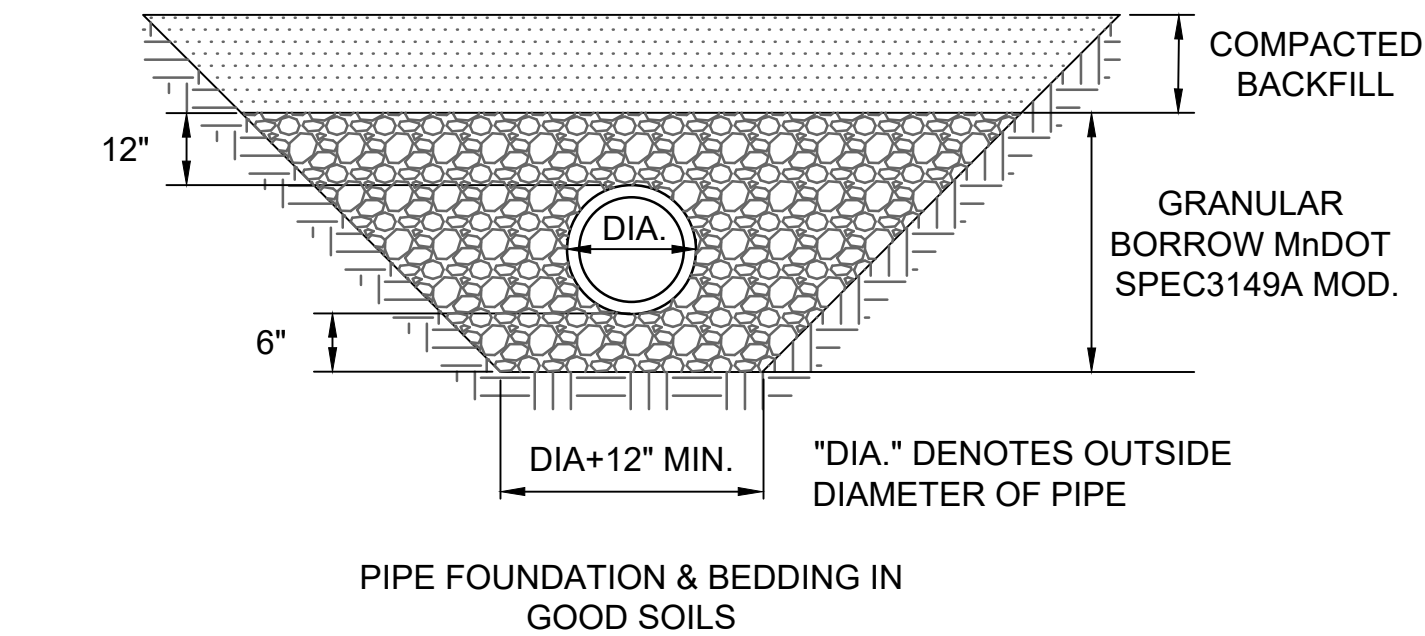
CIVIL DETAILS

DRAWING NO.

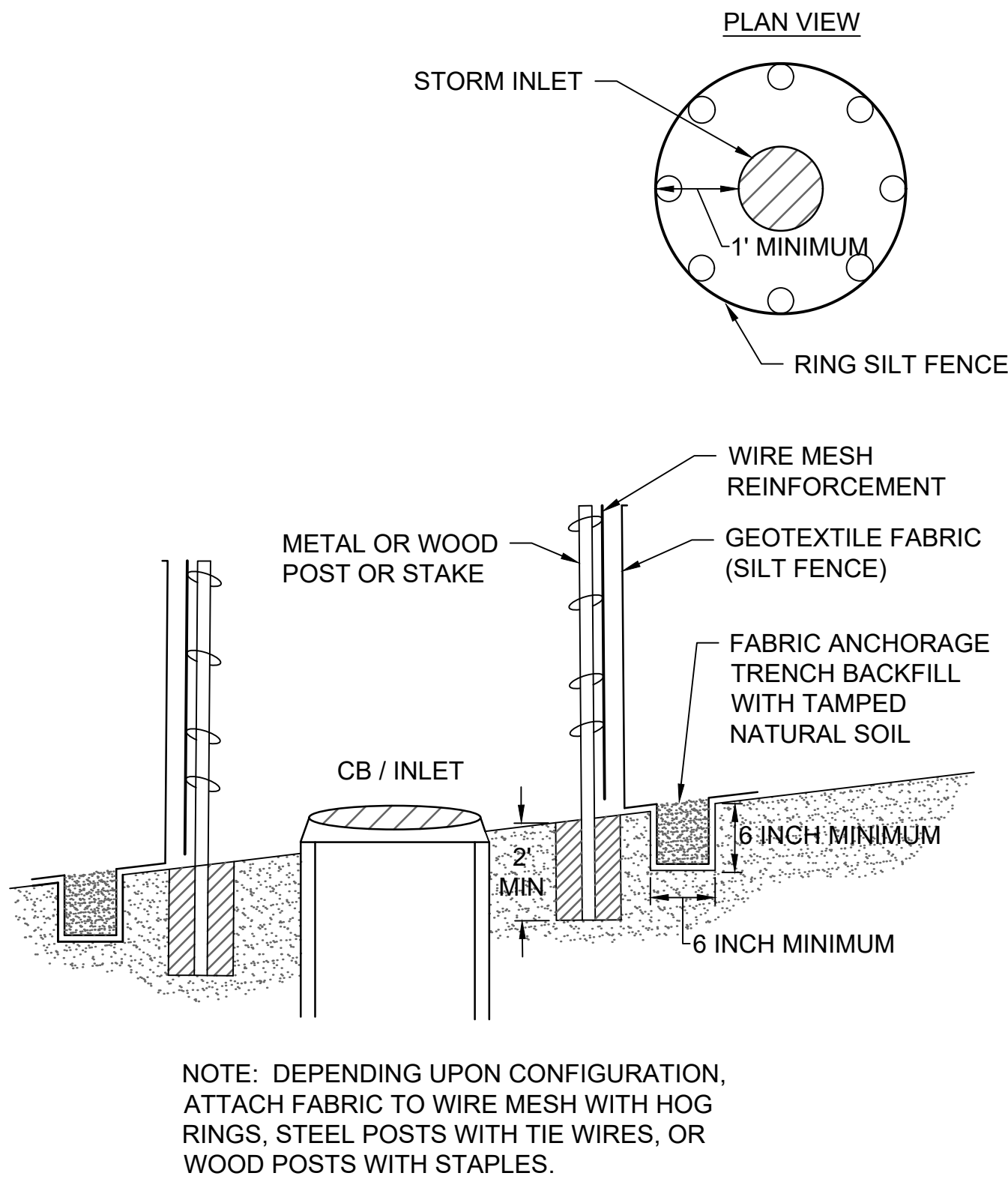
C500

PAGE: 22 OF 24

PLOTTED: 4/21/2025	COMM. NO. 17701
-----------------------	--------------------



TYPICAL INSTALLATION



TYPICAL INSTALLATION

### 1 INLET PROTECTION W/ SILT FENCE

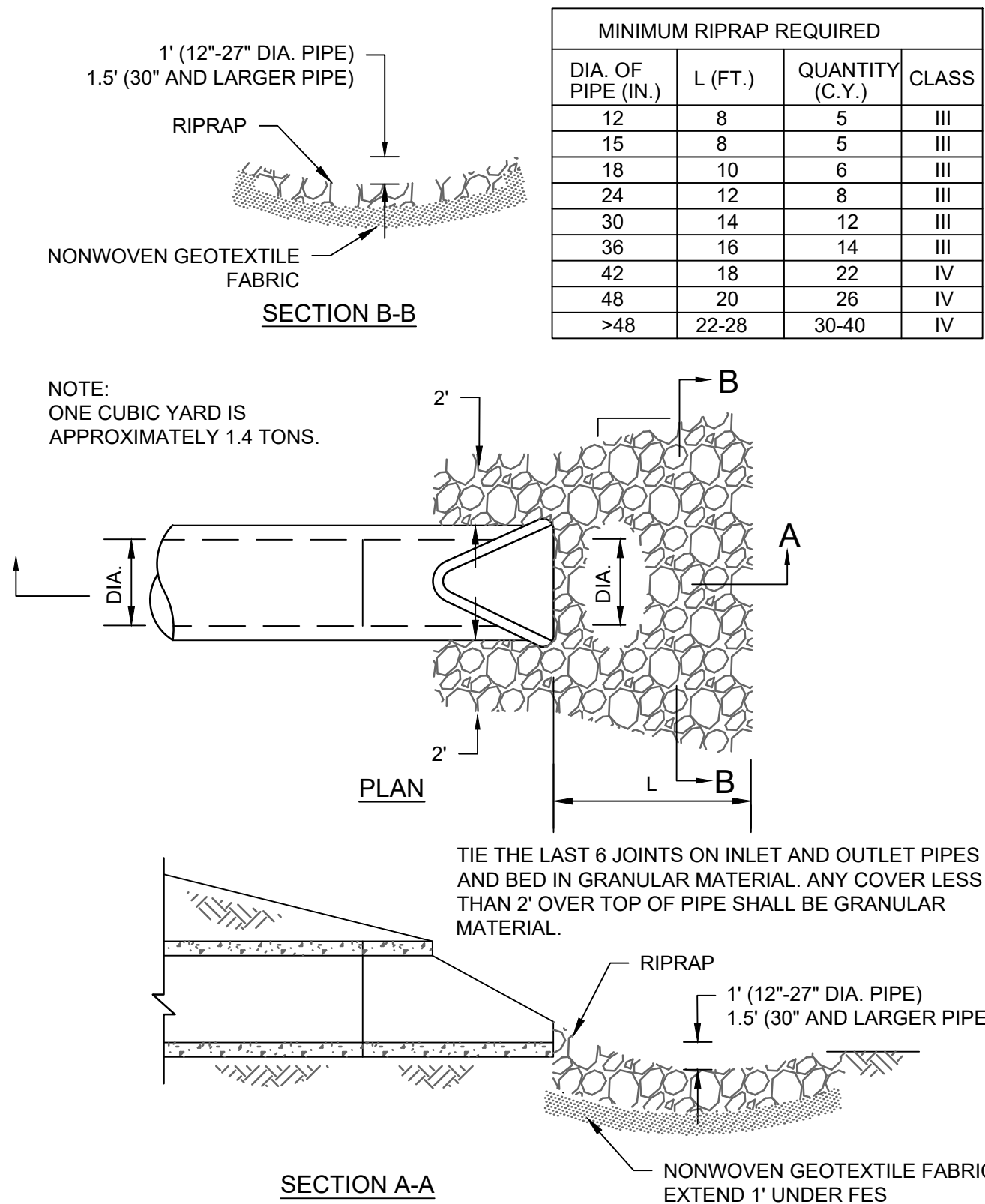
SCALE: N.T.S.

### 2 SILT FENCE DETAIL

SCALE: N.T.S.

### 3 PIPE BEDDING DETAIL

SCALE: N.T.S.



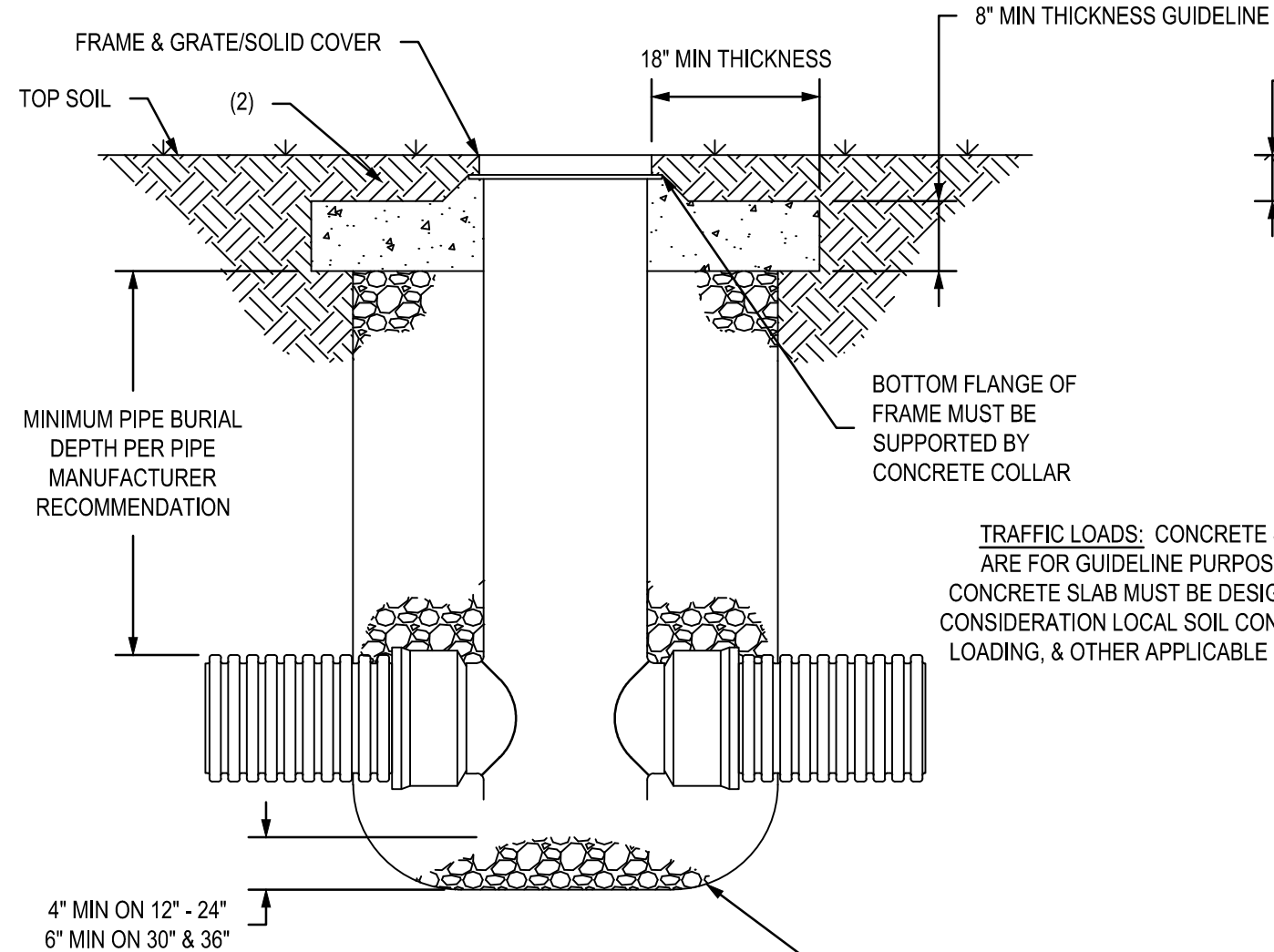
### 4 FLARED END SECTION

SCALE: N.T.S.

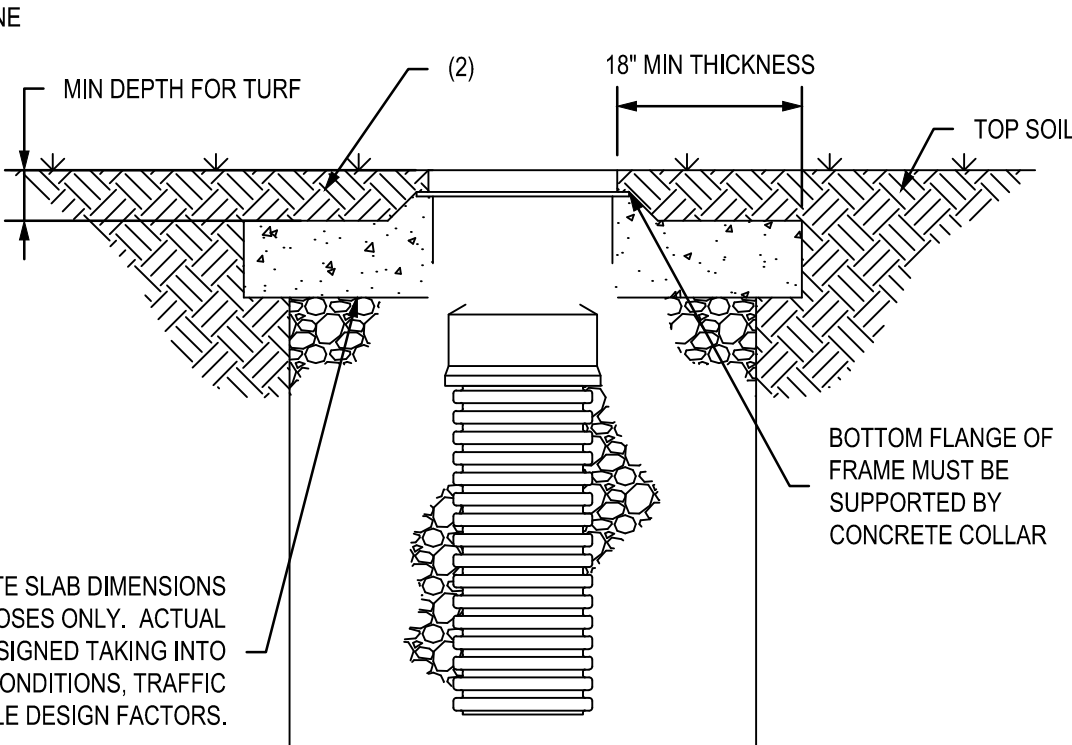
Y:\177001\17701 WOODHILL CC - DRAINAGE STUDY - WAYZATA\_07 Civil\_01 CAD files\_01 SHEETS\17701\_C\_DETAILS.dwg  
Klebbing  
Jun 06, 2025 - 2:59pm  
Xref Filename: \17701\_ Title Block

NYLOPLAST TURF TRAFFIC INSTALLATION

12" - 36" DRAIN BASIN



12" - 30" INLINE DRAIN



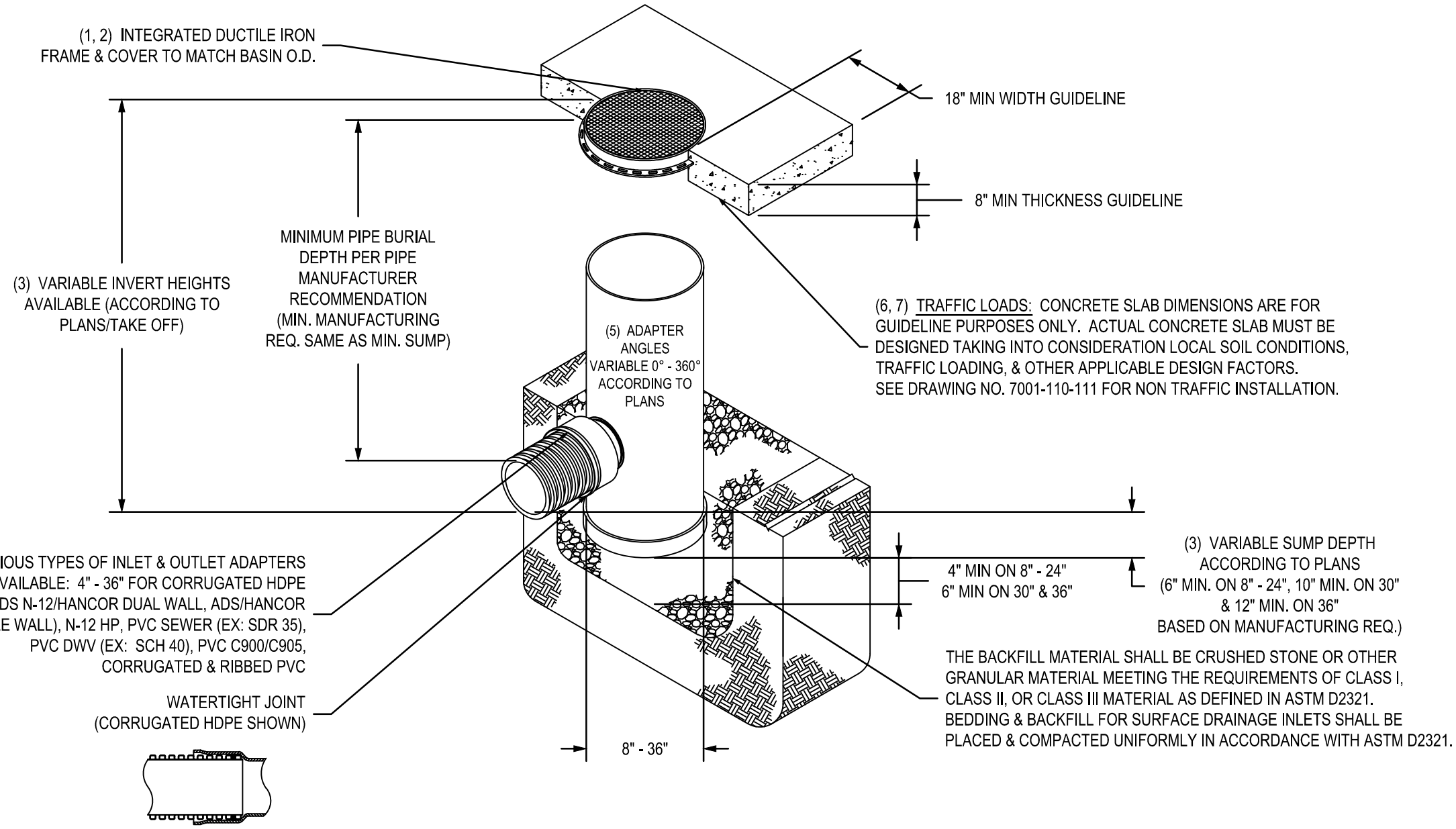
1. GRATES/SOLID COVERS SHALL MEET H-20 LOAD RATING FOR 30" PEDESTRIAN & 12" - 30" STANDARD & SOLID
2. DESIGN SHOULD ACCOUNT FOR ROOT DEPTH TO ALLOW TURF TO GROW AND PREVENT EROSION AROUND GRATE SO THAT HAZARDS DO NOT FORM.
3. 36" DRAIN BASIN REQUIRES 36"x30" REDUCING CONE. REDUCING CONE REQUIRES 2.25FT MINIMUM FROM GRADE TO TOP OF PIPE.

THIS PRINT DISCLOSES SUBJECT MATTER IN WHICH NYLOPLAST HAS PROPRIETARY RIGHTS. THE RECEIPT OR POSSESSION OF THIS PRINT DOES NOT CONFER, TRANSFER, OR LICENSE THE USE OF THE DESIGN OR TECHNICAL INFORMATION SHOWN HEREIN. REPRODUCTION OF THIS PRINT OR ANY INFORMATION CONTAINED HEREIN, OR MANUFACTURE OF ANY ARTICLE HEREFROM, FOR THE DISCLOSURE TO OTHERS IS FORBIDDEN, EXCEPT BY SPECIFIC WRITTEN PERMISSION FROM NYLOPLAST.

DRAWN BY	EBC	MATERIAL	
DATE	01-05-09		
REVISED BY	NMH	PROJECT NO./NAME	
DATE	06-12-18		
DWG SIZE	A	SCALE	1:25 SHEET 1 OF 1

<b>ADS</b> Nyloplast	3130 VERONA AVE BUFORD, GA 30518 PHN (770) 932-2443 FAX (770) 932-2490 www.nyloplast-us.com
TITLE	DRAIN BASIN & INLINE DRAIN TURF TRAFFIC INSTALLATION
DWG NO.	7001-110-340
REV	G

NYLOPLAST DRAIN BASIN WITH SOLID COVER



- 1 - 8" - 30" SOLID COVERS SHALL BE DUCTILE IRON PER ASTM A536 GRADE 70-50-05.
- 2 - 12" - 30" FRAMES SHALL BE DUCTILE IRON PER ASTM A536 GRADE 70-50-05.
- 3 - DRAIN BASIN TO BE CUSTOM MANUFACTURED ACCORDING TO PLAN DETAILS. RISERS ARE NEEDED FOR BASINS OVER 84" DUE TO SHIPPING RESTRICTIONS. SEE DRAWING NO. 7001-110-065.
- 4 - DRAINAGE CONNECTION STUB JOINT TIGHTNESS SHALL CONFORM TO ASTM D3212 FOR CORRUGATED HDPE (ADS N-12/HANCOR DUAL WALL, N-12 HP, & PVC SEWER (4" - 36").
- 5 - ADAPTERS CAN BE MOUNTED ON ANY ANGLE 0° TO 360°. TO DETERMINE MINIMUM ANGLE BETWEEN ADAPTERS SEE DRAWING NO. 7001-110-012.
- 6 - 12" - 30" SOLID COVERS SHALL MEET H-20 LOAD RATING.
- 7 - 8" & 10" SOLID COVERS ARE RATED FOR LIGHT DUTY APPLICATIONS ONLY. NO CONCRETE COLLAR NEEDED FOR LIGHT DUTY RATING.

THIS PRINT DISCLOSES SUBJECT MATTER IN WHICH NYLOPLAST HAS PROPRIETARY RIGHTS. THE RECEIPT OR POSSESSION OF THIS PRINT DOES NOT CONFER, TRANSFER, OR LICENSE THE USE OF THE DESIGN OR TECHNICAL INFORMATION SHOWN HEREIN. REPRODUCTION OF THIS PRINT OR ANY INFORMATION CONTAINED HEREIN, OR MANUFACTURE OF ANY ARTICLE HEREFROM, FOR THE DISCLOSURE TO OTHERS IS FORBIDDEN, EXCEPT BY SPECIFIC WRITTEN PERMISSION FROM NYLOPLAST.

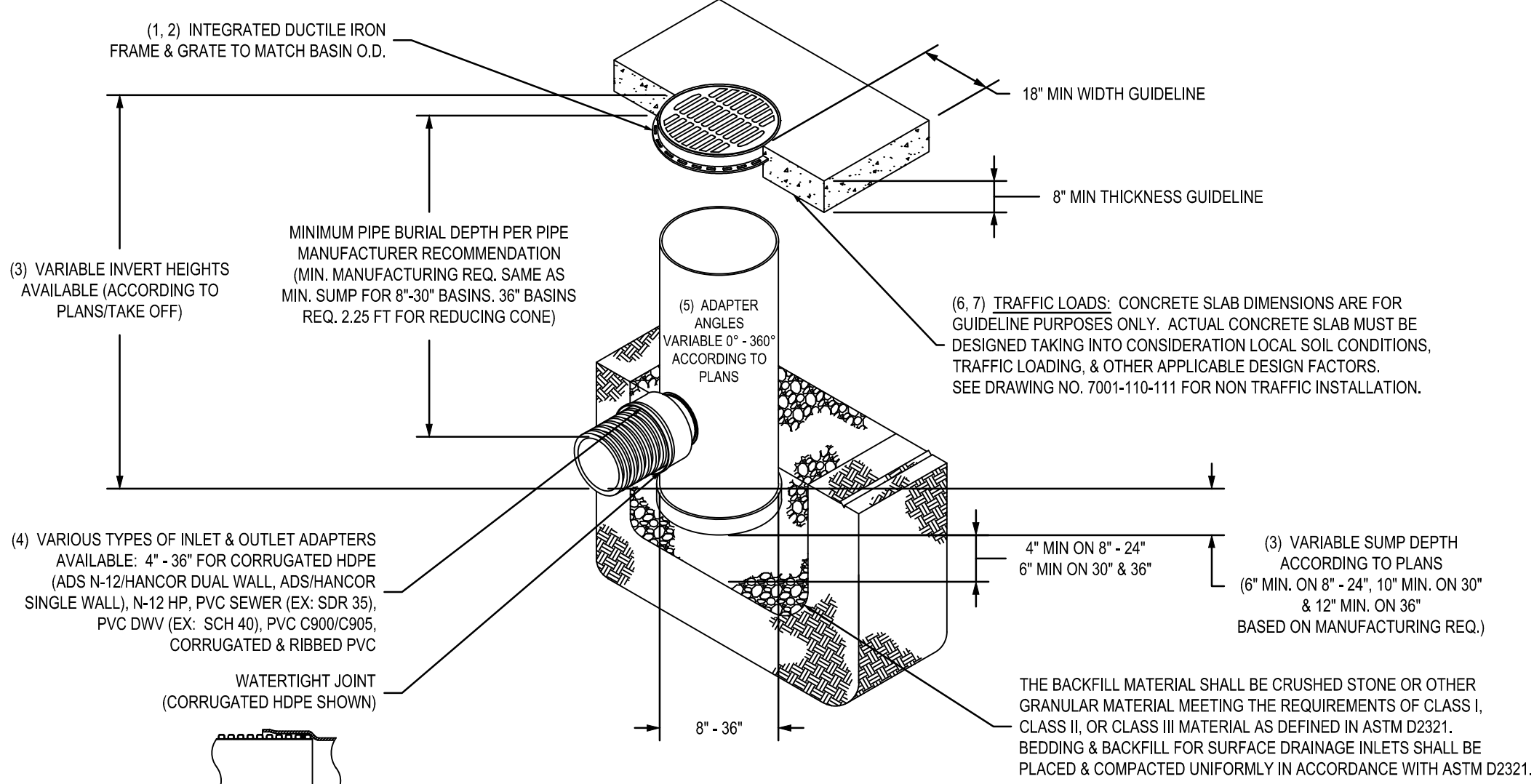
DRAWN BY	EBC	MATERIAL	
DATE	09-14-07		
REVISED BY	NMH	PROJECT NO./NAME	
DATE	06-12-18		
DWG SIZE	A	SCALE	1:40 SHEET 1 OF 1

<b>ADS</b> Nyloplast	3130 VERONA AVE BUFORD, GA 30518 PHN (770) 932-2443 FAX (770) 932-2490 www.nyloplast-us.com
TITLE	DRAIN BASIN WITH SOLID COVER QUICK SPEC INSTALLATION DETAIL
DWG NO.	7001-110-298
REV	E

1 STORM INLET/MANHOLE TURF TRAFFIC INSTALLATION

SCALE: N.T.S.

NYLOPLAST DRAIN BASIN WITH STANDARD GRATE



- 1 - 8" - 30" STANDARD GRATES SHALL BE DUCTILE IRON PER ASTM A536 GRADE 70-50-05.
- 2 - 12" - 30" FRAMES SHALL BE DUCTILE IRON PER ASTM A536 GRADE 70-50-05.
- 3 - DRAIN BASIN TO BE CUSTOM MANUFACTURED ACCORDING TO PLAN DETAILS. RISERS ARE NEEDED FOR BASINS OVER 84" DUE TO SHIPPING RESTRICTIONS. SEE DRAWING NO. 7001-110-065.
- 4 - DRAINAGE CONNECTION STUB JOINT TIGHTNESS SHALL CONFORM TO ASTM D3212 FOR CORRUGATED HDPE (ADS N-12/HANCOR DUAL WALL, N-12 HP, & PVC SEWER (4" - 36").
- 5 - ADAPTERS CAN BE MOUNTED ON ANY ANGLE 0° TO 360°. TO DETERMINE MINIMUM ANGLE BETWEEN ADAPTERS SEE DRAWING NO. 7001-110-012.
- 6 - 12" - 30" STANDARD GRATES SHALL MEET H-20 LOAD RATING.
- 7 - 8" & 10" STANDARD GRATES ARE RATED FOR LIGHT DUTY APPLICATIONS ONLY. NO CONCRETE COLLAR NEEDED FOR LIGHT DUTY RATING.

THIS PRINT DISCLOSES SUBJECT MATTER IN WHICH NYLOPLAST HAS PROPRIETARY RIGHTS. THE RECEIPT OR POSSESSION OF THIS PRINT DOES NOT CONFER, TRANSFER, OR LICENSE THE USE OF THE DESIGN OR TECHNICAL INFORMATION SHOWN HEREIN. REPRODUCTION OF THIS PRINT OR ANY INFORMATION CONTAINED HEREIN, OR MANUFACTURE OF ANY ARTICLE HEREFROM, FOR THE DISCLOSURE TO OTHERS IS FORBIDDEN, EXCEPT BY SPECIFIC WRITTEN PERMISSION FROM NYLOPLAST.

DRAWN BY	EBC	MATERIAL	
DATE	1-23-06		
REVISED BY	NMH	PROJECT NO./NAME	
DATE	06-12-18		
DWG SIZE	A	SCALE	1:40 SHEET 1 OF 1

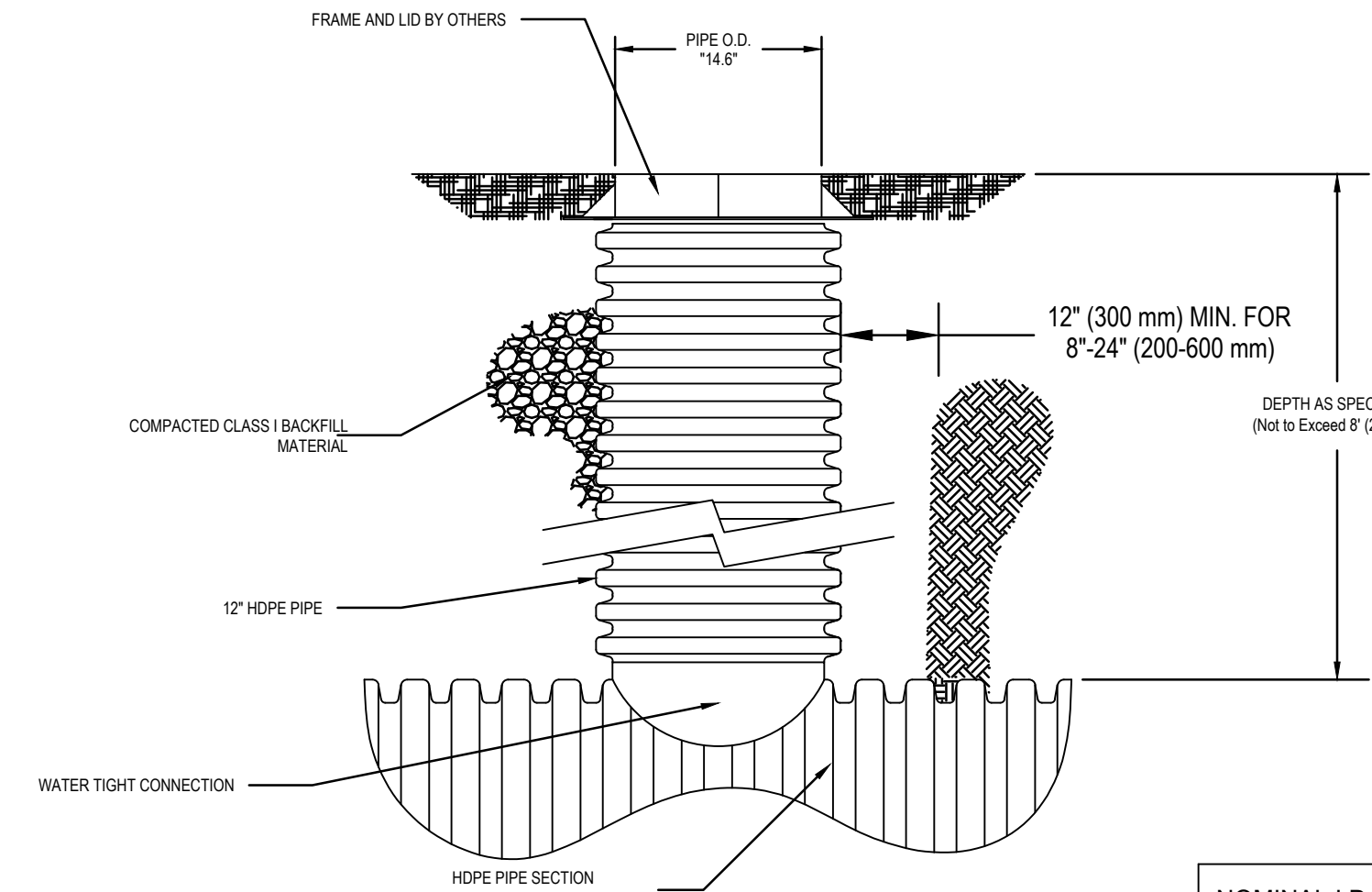
<b>ADS</b> Nyloplast	3130 VERONA AVE BUFORD, GA 30518 PHN (770) 932-2443 FAX (770) 932-2490 www.nyloplast-us.com
TITLE	DRAIN BASIN WITH STANDARD GRATE QUICK SPEC INSTALLATION DETAIL
DWG NO.	7001-110-144
REV	J

3 STORM INLET DETAIL

SCALE: N.T.S.

2 STORM MANHOLE DETAIL

SCALE: N.T.S.



NOMINAL I.D.	PIPE O.D. "X"
12" (300mm)	14.6" (371mm)
15" (375mm)	17.8" (452mm)
18" (450mm)	21.5" (538mm)
24" (600mm)	28.2" (716mm)

4 CLEANOUT DETAIL

SCALE: N.T.S.



ANDERSON

13605 1st Avenue N. #100  
Plymouth, MN 55441 | [ae-mn.com](http://ae-mn.com)  
P 763.412.4000 | F 763.412.4090  
Anderson Engineering of Minnesota, LLC

STORMWATER  
INFRASTRUCTURE  
IMPROVEMENTS

WOODHILL COUNTRY CLUB  
200 WOODHILL RD  
WAYZATA, MINNESOTA

I HEREBY CERTIFY THAT THIS PLAN, SPECIFICATION, OR REPORT WAS PREPARED BY ME OR UNDER MY DIRECT SUPERVISION AND THAT I AM A DULY LICENSED PROFESSIONAL ENGINEER UNDER THE LAWS OF THE STATE OF MINNESOTA.

PRINT NAME: KYLE STEBBING, PE

SIGNATURE: *Kyle Stebbing*

DATE: 6/6/2025 LICENSE NO. 61855

REVISION LOG

NO.	DATE	DESCRIPTION OF REVISIONS

CONSTRUCTION DOCUMENTS

DESIGNED:	DRAWN:	CHECKED BY:
KS	KS	AT

DRAWING TITLE

CIVIL DETAILS

DRAWING NO.

C501

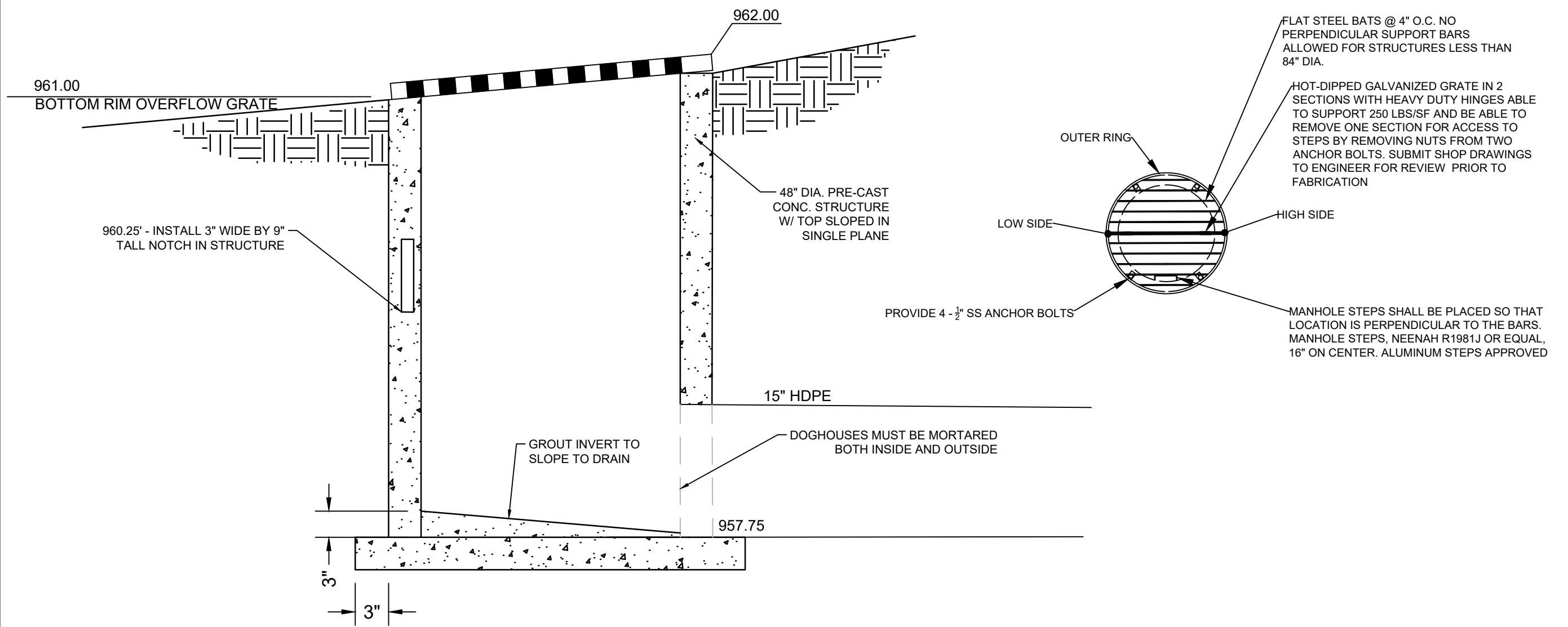
PAGE: 23 OF 24

PLOTTED:	COMM. NO.
4/21/2025	17701

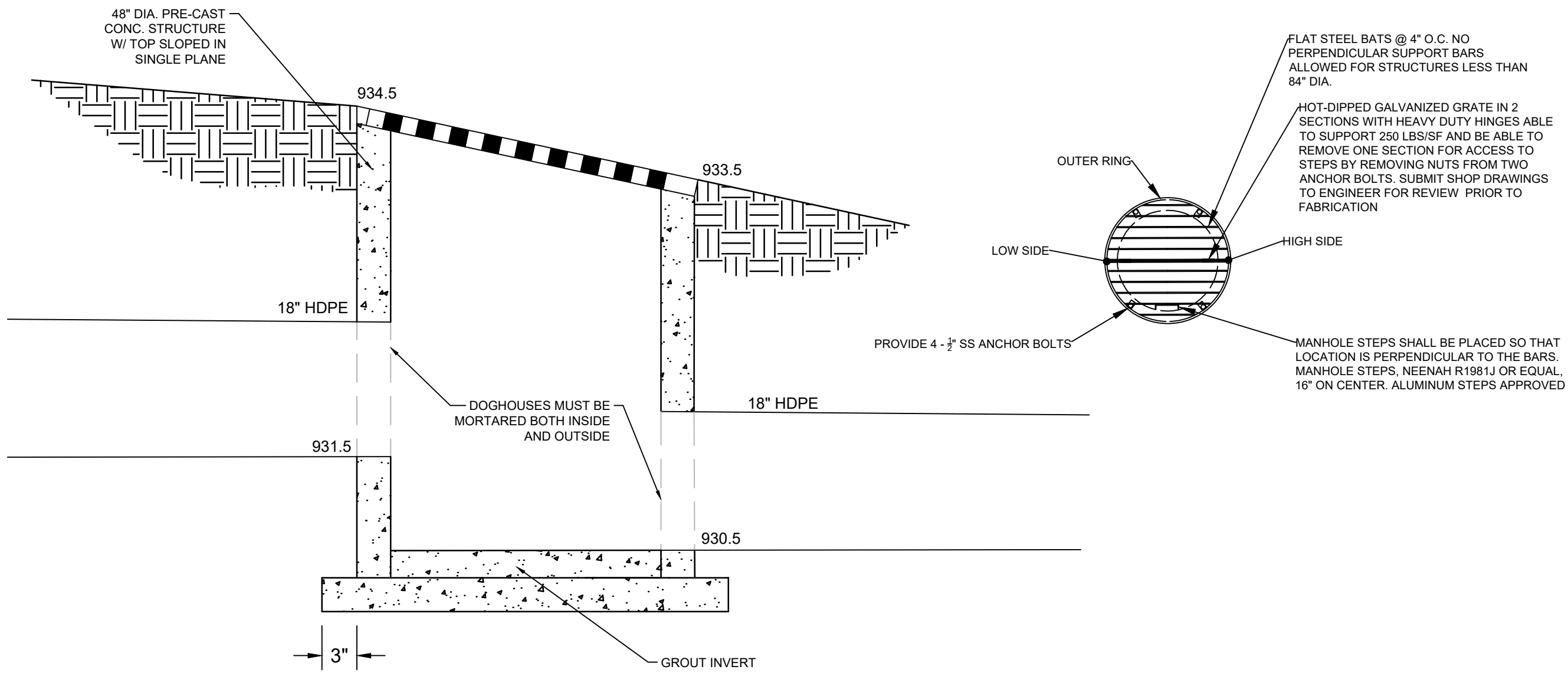
Y:\17700\17701 WOODHILL CC - DRAINAGE STUDY - WAYZATA\_07 Civil\_01 CAD files\_01 SHEETS\17701\_C\_DETAILS.dwg

KStebbing

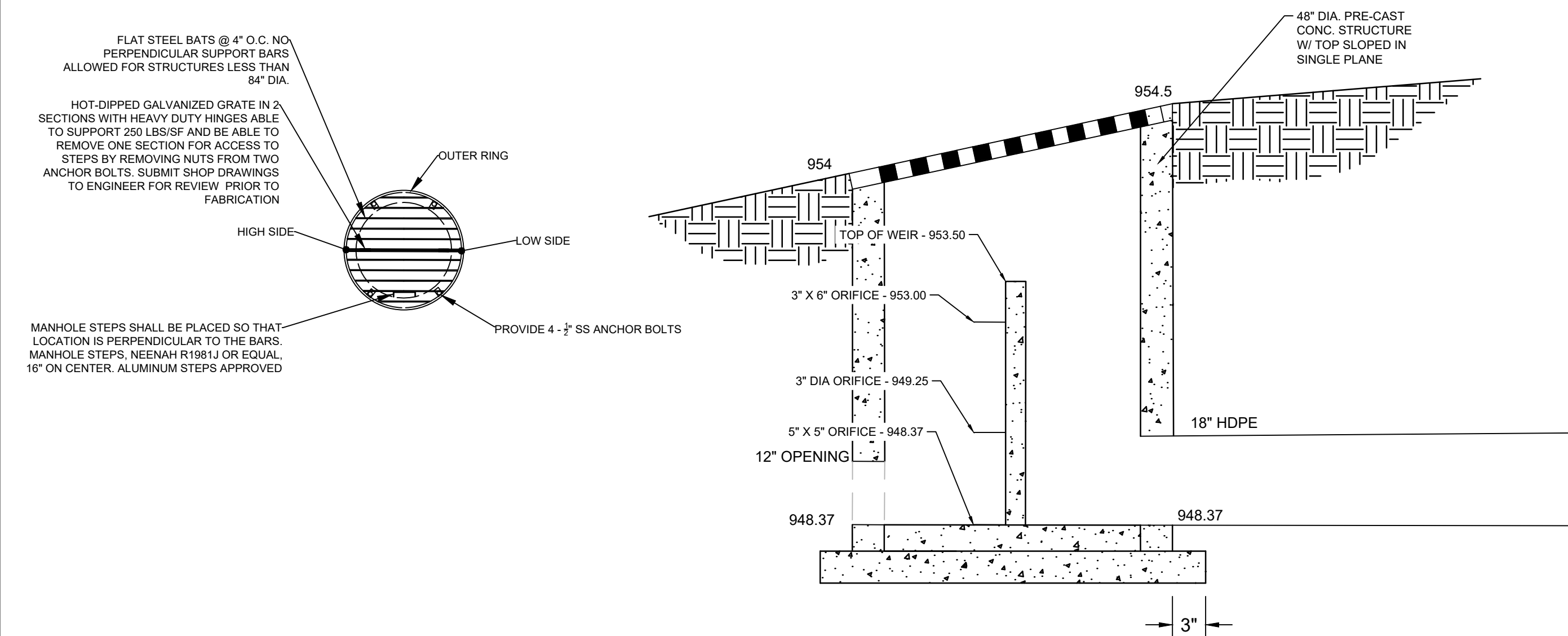
Jun 06, 2025 - 2:59pm  
Xref Filename: 17701\_ Title Block



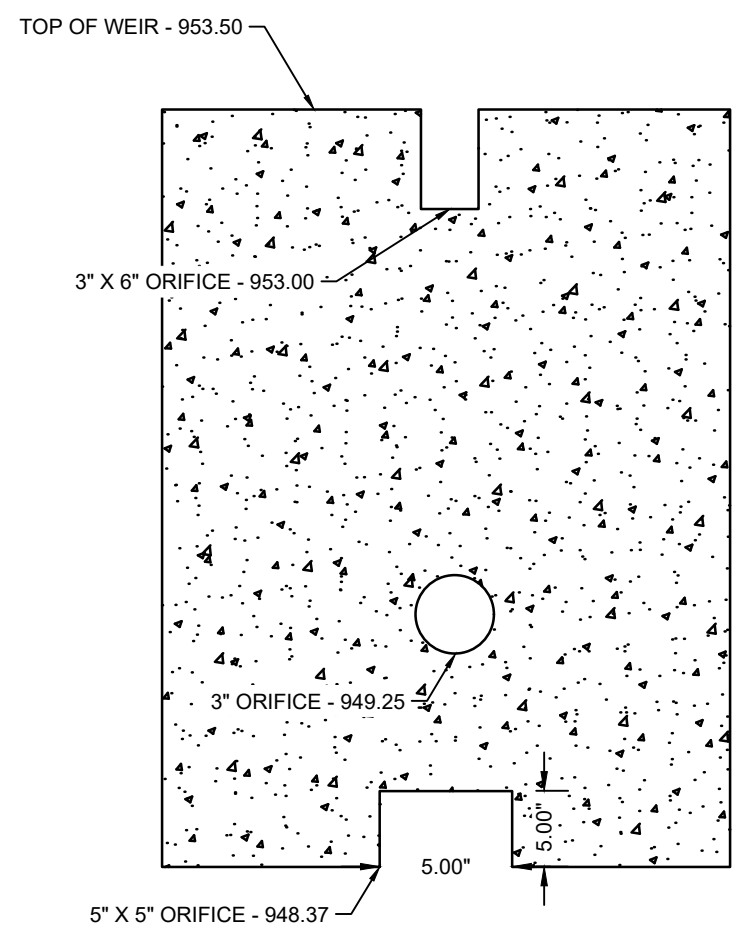
1 OCS-1 DETAIL  
SCALE: N.T.S.



2 OCS-21 DETAIL  
SCALE: N.T.S.



3 OCS-9 DETAIL  
SCALE: N.T.S.



13605 1st Avenue N. #100  
Plymouth, MN 55441 | [ae-mn.com](http://ae-mn.com)  
P 763.412.4000 | F 763.412.4090  
Anderson Engineering of Minnesota, LLC

## STORMWATER INFRASTRUCTURE IMPROVEMENTS

WOODHILL COUNTRY CLUB  
200 WOODHILL RD  
WAYZATA, MINNESOTA

I HEREBY CERTIFY THAT THIS PLAN, SPECIFICATION, OR REPORT WAS PREPARED BY ME OR UNDER MY DIRECT SUPERVISION AND THAT I AM A DULY LICENSED PROFESSIONAL ENGINEER UNDER THE LAWS OF THE STATE OF MINNESOTA.

PRINT NAME: KYLE STEBBING, PE

SIGNATURE: KStebbing

DATE: 6/6/2025 LICENSE NO. 61855

### REVISION LOG

NO.	DATE	DESCRIPTION OF REVISIONS

### CONSTRUCTION DOCUMENTS

DESIGNED:	DRAWN:	CHECKED BY:
KS	KS	AT

### DRAWING TITLE

CIVIL DETAILS

DRAWING NO.

C502

PAGE: 24 OF 24

PLOTTED:  
4/21/2025

COMM. NO.  
17701