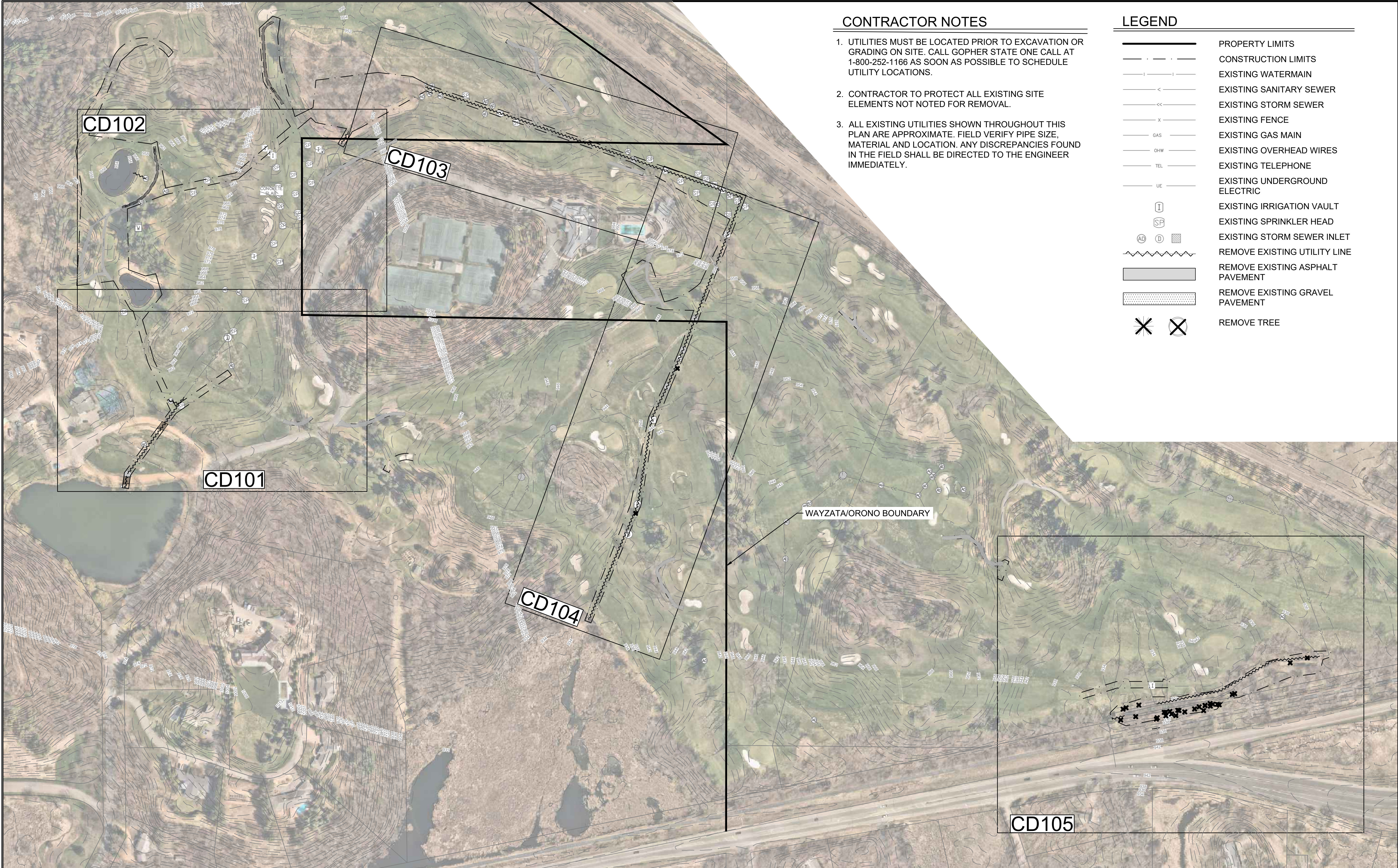


Jun 06, 2025 - 2:41pm  
Xref Filename: 17701\_s\_base  
KStebbing  
Y:\17700\17701 WOODHILL CC - DRAINAGE STUDY - WAYZATA\_07 Civil\_01 CAD files\_01 SHEETS\17701\_C\_DEMO.dwg



CONTRACTOR NOTES

1. UTILITIES MUST BE LOCATED PRIOR TO EXCAVATION OR GRADING ON SITE. CALL GOPHER STATE ONE CALL AT 1-800-252-1166 AS SOON AS POSSIBLE TO SCHEDULE UTILITY LOCATIONS.
2. CONTRACTOR TO PROTECT ALL EXISTING SITE ELEMENTS NOT NOTED FOR REMOVAL.
3. ALL EXISTING UTILITIES SHOWN THROUGHOUT THIS PLAN ARE APPROXIMATE. FIELD VERIFY PIPE SIZE, MATERIAL AND LOCATION. ANY DISCREPANCIES FOUND IN THE FIELD SHALL BE DIRECTED TO THE ENGINEER IMMEDIATELY.

LEGEND

- |  |                                  |
|--|----------------------------------|
|  | PROPERTY LIMITS                  |
|  | CONSTRUCTION LIMITS              |
|  | EXISTING WATERMAIN               |
|  | EXISTING SANITARY SEWER          |
|  | EXISTING STORM SEWER             |
|  | EXISTING FENCE                   |
|  | EXISTING GAS MAIN                |
|  | EXISTING OVERHEAD WIRES          |
|  | EXISTING TELEPHONE               |
|  | EXISTING UNDERGROUND ELECTRIC    |
|  | EXISTING IRRIGATION VAULT        |
|  | EXISTING SPRINKLER HEAD          |
|  | EXISTING STORM SEWER INLET       |
|  | REMOVE EXISTING UTILITY LINE     |
|  | REMOVE EXISTING ASPHALT PAVEMENT |
|  | REMOVE EXISTING GRAVEL PAVEMENT  |
|  | REMOVE TREE                      |



ANDERSON

13605 1st Avenue N. #100  
Plymouth, MN 55441 | [ae-mn.com](http://ae-mn.com)  
P 763.412.4000 | F 763.412.4090  
Anderson Engineering of Minnesota, LLC

STORMWATER  
INFRASTRUCTURE  
IMPROVEMENTS

WOODHILL COUNTRY CLUB  
200 WOODHILL RD  
WAYZATA, MINNESOTA

I HEREBY CERTIFY THAT THIS PLAN, SPECIFICATION, OR REPORT WAS PREPARED BY ME OR UNDER MY DIRECT SUPERVISION AND THAT I AM A DULY LICENSED PROFESSIONAL ENGINEER UNDER THE LAWS OF THE STATE OF MINNESOTA.

PRINT NAME: KYLE STEBBING, PE

SIGNATURE:

DATE: 6/6/2025 LICENSE NO. 61855

REVISION LOG

| NO. | DATE | DESCRIPTION OF REVISIONS |
|-----|------|--------------------------|
|     |      |                          |
|     |      |                          |
|     |      |                          |
|     |      |                          |
|     |      |                          |
|     |      |                          |

CONSTRUCTION DOCUMENTS

|                 |              |                   |
|-----------------|--------------|-------------------|
| DESIGNED:<br>KS | DRAWN:<br>KS | CHECKED BY:<br>AT |
|-----------------|--------------|-------------------|

DRAWING TITLE

OVERALL  
DEMO PLAN

DRAWING NO.

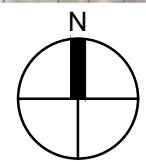
CD100

PAGE: 1 OF 24

|                       |                    |
|-----------------------|--------------------|
| PLOTTED:<br>4/21/2025 | COMM. NO.<br>17701 |
|-----------------------|--------------------|

1 OVERALL DEMO PLAN

SCALE: 1"=150'



0 150' 300'



Jun 06, 2025 - 2:41pm  
Xref Filename: \\17701\_s\_base\\17701\_title Block\\17701\_c\_demo.dwg  
KStebbing  
Y:\\17700\\17701 WOODHILL CC - DRAINAGE STUDY - WAYZATA\_07 Civil\_01 CAD files\\17701\_c\_demo.dwg



LEGEND

- PROPERTY LIMITS
- CONSTRUCTION LIMITS
- EXISTING WATERMAIN
- EXISTING SANITARY SEWER
- EXISTING STORM SEWER
- EXISTING FENCE
- EXISTING GAS MAIN
- EXISTING OVERHEAD WIRES
- EXISTING TELEPHONE
- EXISTING UNDERGROUND ELECTRIC
- EXISTING IRRIGATION VAULT
- EXISTING SPRINKLER HEAD
- EXISTING STORM SEWER INLET
- REMOVE EXISTING UTILITY LINE
- REMOVE EXISTING ASPHALT PAVEMENT
- REMOVE & SALVAGE EXISTING GRAVEL PAVEMENT
- REMOVE TREE

KEY NOTES

- 1 REMOVE EXISTING PIPE
- 2 REMOVE EXISTING INLET STRUCTURE
- 3 REMOVE TREE
- 4 SALVAGE EX. GRAVEL SURFACE
- 5 PLUG END + ABANDON PIPE IN PLACE
- 6 REMOVE EX. BITUMINOUS PAVEMENT

CONTRACTOR NOTES

- UTILITIES MUST BE LOCATED PRIOR TO EXCAVATION OR GRADING ON SITE. CALL GOPHER STATE ONE CALL AT 1-800-252-1166 AS SOON AS POSSIBLE TO SCHEDULE UTILITY LOCATIONS.
- CONTRACTOR TO PROTECT ALL EXISTING SITE ELEMENTS NOT NOTED FOR REMOVAL.
- ALL EXISTING UTILITIES SHOWN THROUGHOUT THIS PLAN ARE APPROXIMATE. FIELD VERIFY PIPE SIZE, MATERIAL AND LOCATION. ANY DISCREPANCIES FOUND IN THE FIELD SHALL BE DIRECTED TO THE ENGINEER IMMEDIATELY.



ANDERSON

13605 1st Avenue N. #100  
Plymouth, MN 55441 | [ae-mn.com](http://ae-mn.com)  
P 763.412.4000 | F 763.412.4090  
Anderson Engineering of Minnesota, LLC

STORMWATER  
INFRASTRUCTURE  
IMPROVEMENTS

WOODHILL COUNTRY CLUB  
200 WOODHILL RD  
WAYZATA, MINNESOTA

I HEREBY CERTIFY THAT THIS PLAN, SPECIFICATION, OR REPORT WAS PREPARED BY ME OR UNDER MY DIRECT SUPERVISION AND THAT I AM A DULY LICENSED PROFESSIONAL ENGINEER UNDER THE LAWS OF THE STATE OF MINNESOTA.

PRINT NAME: KYLE STEBBING, PE

SIGNATURE: *KStebbing*

DATE: 6/6/2025 LICENSE NO. 61855

REVISION LOG

| NO. | DATE | DESCRIPTION OF REVISIONS |
|-----|------|--------------------------|
|     |      |                          |
|     |      |                          |
|     |      |                          |
|     |      |                          |
|     |      |                          |
|     |      |                          |
|     |      |                          |

CONSTRUCTION DOCUMENTS

|                 |              |                   |
|-----------------|--------------|-------------------|
| DESIGNED:<br>KS | DRAWN:<br>KS | CHECKED BY:<br>AT |
|-----------------|--------------|-------------------|

DRAWING TITLE

DEMO PLAN

DRAWING NO.

CD101

PAGE: 2 OF 24

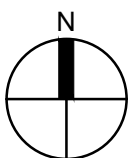
PLOTTED:  
4/21/2025

COMM. NO.  
17701

KEY MAP



1 DEMO PLAN WEST  
SCALE: 1" = 40'



0 40' 80'



Jun 06, 2025 - 2:41pm  
Xref Filename: 17701\_s\_base\17701\_title Block\17701\_c\_base\HemCoParcels\_ByCity  
Y:\17700\17701 WOODHILL CC - DRAINAGE STUDY - WAYZATA\_07 Civil\_01 CAD files\_01 SHEETS\17701\_C\_DEMO.dwg



LEGEND

- PROPERTY LIMITS
- CONSTRUCTION LIMITS
- EXISTING WATERMAIN
- EXISTING SANITARY SEWER
- EXISTING STORM SEWER
- EXISTING FENCE
- EXISTING GAS MAIN
- EXISTING OVERHEAD WIRES
- EXISTING TELEPHONE
- EXISTING UNDERGROUND ELECTRIC
- EXISTING IRRIGATION VAULT
- EXISTING SPRINKLER HEAD
- EXISTING STORM SEWER INLET
- REMOVE EXISTING UTILITY LINE
- REMOVE EXISTING ASPHALT PAVEMENT
- REMOVE EXISTING GRAVEL PAVEMENT
- REMOVE TREE

KEY NOTES

- 1 REMOVE EXISTING PIPE
- 2 REMOVE EXISTING INLET STRUCTURE
- 3 REMOVE TREE
- 4 REMOVE EX. GRAVEL SURFACE
- 5 PLUG END + ABANDON PIPE IN PLACE
- 6 REMOVE EX. BITUMINOUS PAVEMENT

CONTRACTOR NOTES

- UTILITIES MUST BE LOCATED PRIOR TO EXCAVATION OR GRADING ON SITE. CALL GOPHER STATE ONE CALL AT 1-800-252-1166 AS SOON AS POSSIBLE TO SCHEDULE UTILITY LOCATIONS.
- CONTRACTOR TO PROTECT ALL EXISTING SITE ELEMENTS NOT NOTED FOR REMOVAL.
- ALL EXISTING UTILITIES SHOWN THROUGHOUT THIS PLAN ARE APPROXIMATE. FIELD VERIFY PIPE SIZE, MATERIAL AND LOCATION. ANY DISCREPANCIES FOUND IN THE FIELD SHALL BE DIRECTED TO THE ENGINEER IMMEDIATELY.



ANDERSON

13605 1st Avenue N. #100  
Plymouth, MN 55441 | [ae-mn.com](http://ae-mn.com)  
P 763.412.4000 | F 763.412.4090  
Anderson Engineering of Minnesota, LLC

STORMWATER  
INFRASTRUCTURE  
IMPROVEMENTS

WOODHILL COUNTRY CLUB  
200 WOODHILL RD  
WAYZATA, MINNESOTA

I HEREBY CERTIFY THAT THIS PLAN, SPECIFICATION, OR REPORT WAS PREPARED BY ME OR UNDER MY DIRECT SUPERVISION AND THAT I AM A DULY LICENSED PROFESSIONAL ENGINEER UNDER THE LAWS OF THE STATE OF MINNESOTA.

PRINT NAME: KYLE STEBBING, PE

SIGNATURE: [Signature]

DATE: 6/6/2025 LICENSE NO. 61855

REVISION LOG

| NO. | DATE | DESCRIPTION OF REVISIONS |
|-----|------|--------------------------|
|     |      |                          |
|     |      |                          |
|     |      |                          |
|     |      |                          |
|     |      |                          |
|     |      |                          |
|     |      |                          |

CONSTRUCTION DOCUMENTS

|           |        |             |
|-----------|--------|-------------|
| DESIGNED: | DRAWN: | CHECKED BY: |
| KS        | KS     | AT          |

DRAWING TITLE

DEMO PLAN

DRAWING NO.

CD102

PAGE: 3 OF 24

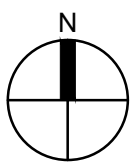
PLOTTED:  
4/21/2025

COMM. NO.  
17701

KEY MAP



1 DEMO PLAN WEST  
SCALE: 1" = 40'



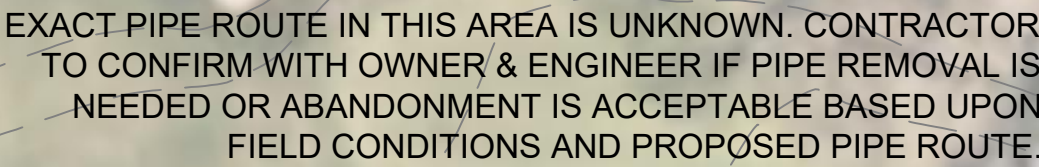
0 40' 80'



1. UTILITIES MUST BE LOCATED PRIOR TO EXCAVATION OR GRADING ON SITE. CALL GOPHER STATE ONE CALL AT 1-800-252-1166 AS SOON AS POSSIBLE TO SCHEDULE UTILITY LOCATIONS.
2. CONTRACTOR TO PROTECT ALL EXISTING SITE ELEMENTS NOT NOTED FOR REMOVAL.
3. ALL EXISTING UTILITIES SHOWN THROUGHOUT THIS PLAN ARE APPROXIMATE. FIELD VERIFY PIPE SIZE, MATERIAL AND LOCATION. ANY DISCREPANCIES FOUND IN THE FIELD SHALL BE DIRECTED TO THE ENGINEER IMMEDIATELY.

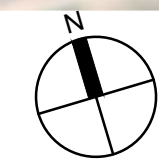
- ① REMOVE EXISTING PIPE
- ② REMOVE EXISTING INLET STRUCTURE
- ③ REMOVE TREE
- ④ REMOVE EX. GRAVEL SURFACE
- ⑤ PLUG END + ABANDON PIPE IN PLACE
- ⑥ REMOVE EX. BITUMINOUS PAVEMENT

|  |                                     |
|--|-------------------------------------|
|  | PROPERTY LIMITS                     |
|  | CONSTRUCTION LIMITS                 |
|  | EXISTING WATERMAIN                  |
|  | EXISTING SANITARY SEWER             |
|  | EXISTING STORM SEWER                |
|  | EXISTING FENCE                      |
|  | EXISTING GAS MAIN                   |
|  | EXISTING OVERHEAD WIRES             |
|  | EXISTING TELEPHONE                  |
|  | EXISTING UNDERGROUND<br>ELECTRIC    |
|  | EXISTING IRRIGATION VAULT           |
|  | EXISTING SPRINKLER HEAD             |
|  | EXISTING STORM SEWER INLET          |
|  | REMOVE EXISTING UTILITY LINE        |
|  | REMOVE EXISTING ASPHALT<br>PAVEMENT |
|  | REMOVE EXISTING GRAVEL<br>PAVEMENT  |
|  | REMOVE TREE                         |
|  |                                     |
|  |                                     |
|  |                                     |



MATCHLINE - SEE SHEET CD104

SCALE: 1"=40'



A horizontal graphic scale bar with three segments. The first segment is white and labeled '0' at its left end. The second segment is black and labeled '40'' at its right end. The third segment is white and labeled '80'' at its right end.

## KEY MAP



# ANDERSON

13605 1st Avenue N. #100  
Plymouth, MN 55441 | [ae-mn.com](http://ae-mn.com)  
P 763.412.4000 | F 763.412.4090  
Anderson Engineering of Minnesota, LLC

WOODHILL COUNTRY CLUB  
200 WOODHILL RD  
WAYZATA, MINNESOTA

PRINT NAME: KYLE STEBBING, PE

SIGNATURE:       NOL      

DATE: 6/6/2025 LICENSE NO. 61855

[illegible]

|                 |              |                   |
|-----------------|--------------|-------------------|
| DESIGNED:<br>KS | DRAWN:<br>KS | CHECKED BY:<br>AT |
|-----------------|--------------|-------------------|

## DEMO PLAN

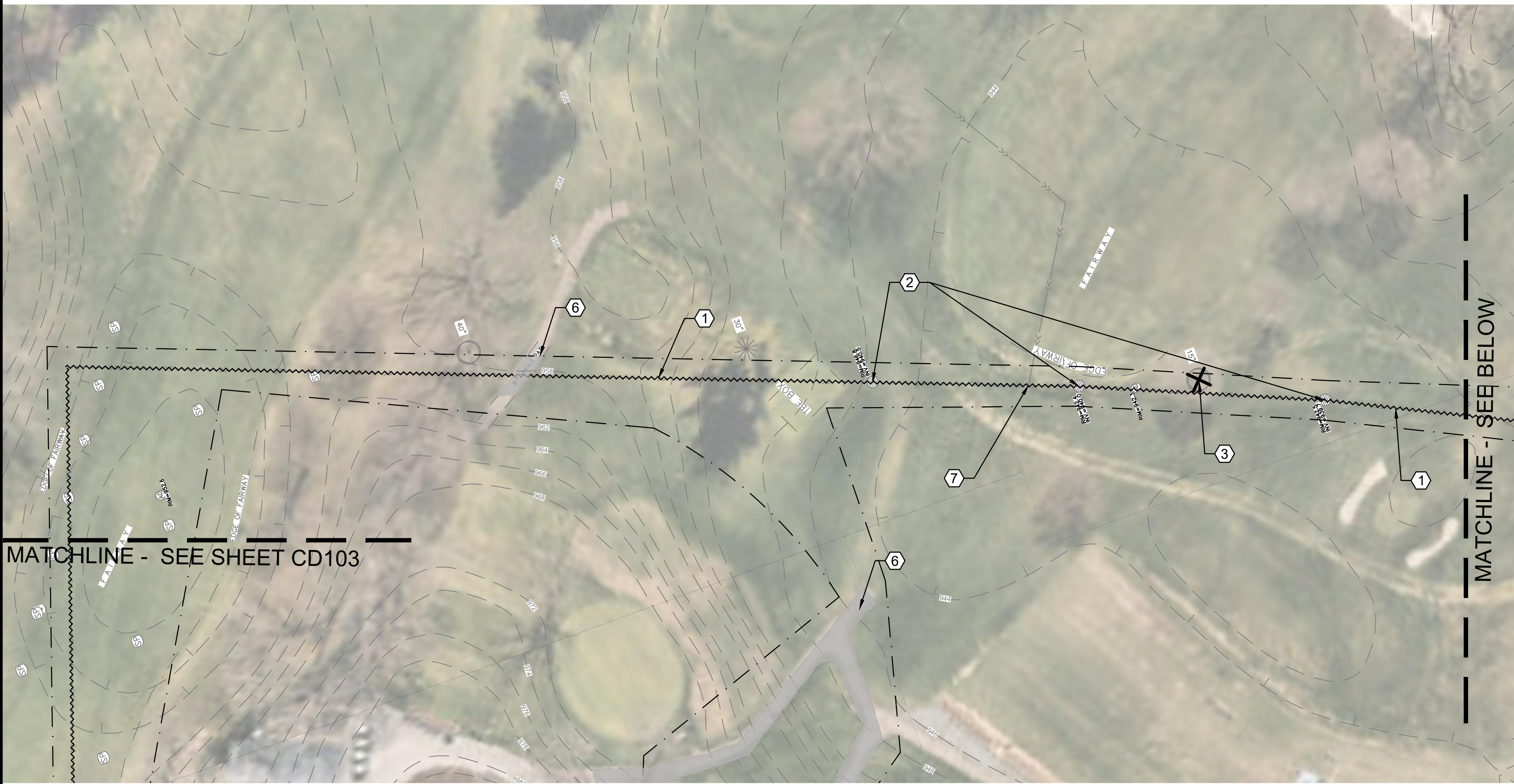
CD103

PAGE: 4 OF 24

|                       |                    |
|-----------------------|--------------------|
| PLOTTED:<br>4/21/2025 | COMM. NO.<br>17701 |
|-----------------------|--------------------|



Jun 06, 2025 - 2:41pm  
Xref Filename: 17701\_s\_base\17701\_title Block\17701\_title Block - WAYZATA\_07 Civil\_01 CAD files\_01 SHEETS\17701\_C\_DEMO.dwg  
Y:\17700\17701 WOODHILL CC - DRAINAGE STUDY - WAYZATA\_07 Civil\_01 CAD files\_01 SHEETS\17701\_C\_DEMO.dwg  
KStebbing



**1 DEMO PLAN EAST**  
SCALE: 1" = 40'



**2 DEMO PLAN EAST**  
SCALE: 1" = 40'

## LEGEND

|  |                                  |
|--|----------------------------------|
|  | PROPERTY LIMITS                  |
|  | CONSTRUCTION LIMITS              |
|  | EXISTING WATERMAIN               |
|  | EXISTING SANITARY SEWER          |
|  | EXISTING STORM SEWER             |
|  | EXISTING FENCE                   |
|  | EXISTING GAS MAIN                |
|  | EXISTING OVERHEAD WIRES          |
|  | EXISTING TELEPHONE               |
|  | EXISTING UNDERGROUND ELECTRIC    |
|  | EXISTING IRRIGATION VAULT        |
|  | EXISTING SPRINKLER HEAD          |
|  | EXISTING STORM SEWER INLET       |
|  | REMOVE EXISTING UTILITY LINE     |
|  | REMOVE EXISTING ASPHALT PAVEMENT |
|  | REMOVE EXISTING GRAVEL PAVEMENT  |
|  | REMOVE TREE                      |

## CONTRACTOR NOTES

- UTILITIES MUST BE LOCATED PRIOR TO EXCAVATION OR GRADING ON SITE. CALL GOPHER STATE ONE CALL AT 1-800-252-1166 AS SOON AS POSSIBLE TO SCHEDULE UTILITY LOCATIONS.
- CONTRACTOR TO PROTECT ALL EXISTING SITE ELEMENTS NOT NOTED FOR REMOVAL.
- ALL EXISTING UTILITIES SHOWN THROUGHOUT THIS PLAN ARE APPROXIMATE. FIELD VERIFY PIPE SIZE, MATERIAL AND LOCATION. ANY DISCREPANCIES FOUND IN THE FIELD SHALL BE DIRECTED TO THE ENGINEER IMMEDIATELY.

## KEY NOTES

- REMOVE EXISTING PIPE
- REMOVE EXISTING INLET STRUCTURE
- REMOVE TREE
- REMOVE EX. GRAVEL SURFACE
- PLUG END + ABANDON PIPE IN PLACE
- REMOVE EX. BITUMINOUS PAVEMENT
- PROTECT EXISTING DRAINAGE LATERALS FOR RECONNECTION TO NEW WORK

## KEY MAP



**ANDERSON**

13605 1st Avenue N. #100  
Plymouth, MN 55441 | [ae-mn.com](http://ae-mn.com)  
P 763.412.4000 | F 763.412.4090  
Anderson Engineering of Minnesota, LLC

## STORMWATER INFRASTRUCTURE IMPROVEMENTS

WOODHILL COUNTRY CLUB  
200 WOODHILL RD  
WAYZATA, MINNESOTA

I HEREBY CERTIFY THAT THIS PLAN, SPECIFICATION, OR REPORT WAS PREPARED BY ME OR UNDER MY DIRECT SUPERVISION AND THAT I AM A DULY LICENSED PROFESSIONAL ENGINEER UNDER THE LAWS OF THE STATE OF MINNESOTA.

PRINT NAME: KYLE STEBBING, PE

SIGNATURE: KStebbing

DATE: 6/6/2025 LICENSE NO. 61855

## REVISION LOG

| NO. | DATE | DESCRIPTION OF REVISIONS |
|-----|------|--------------------------|
|     |      |                          |
|     |      |                          |
|     |      |                          |
|     |      |                          |
|     |      |                          |
|     |      |                          |
|     |      |                          |

## CONSTRUCTION DOCUMENTS

|           |        |             |
|-----------|--------|-------------|
| DESIGNED: | DRAWN: | CHECKED BY: |
| KS        | KS     | AT          |

## DRAWING TITLE

**DEMO PLAN**

DRAWING NO.

**CD104**

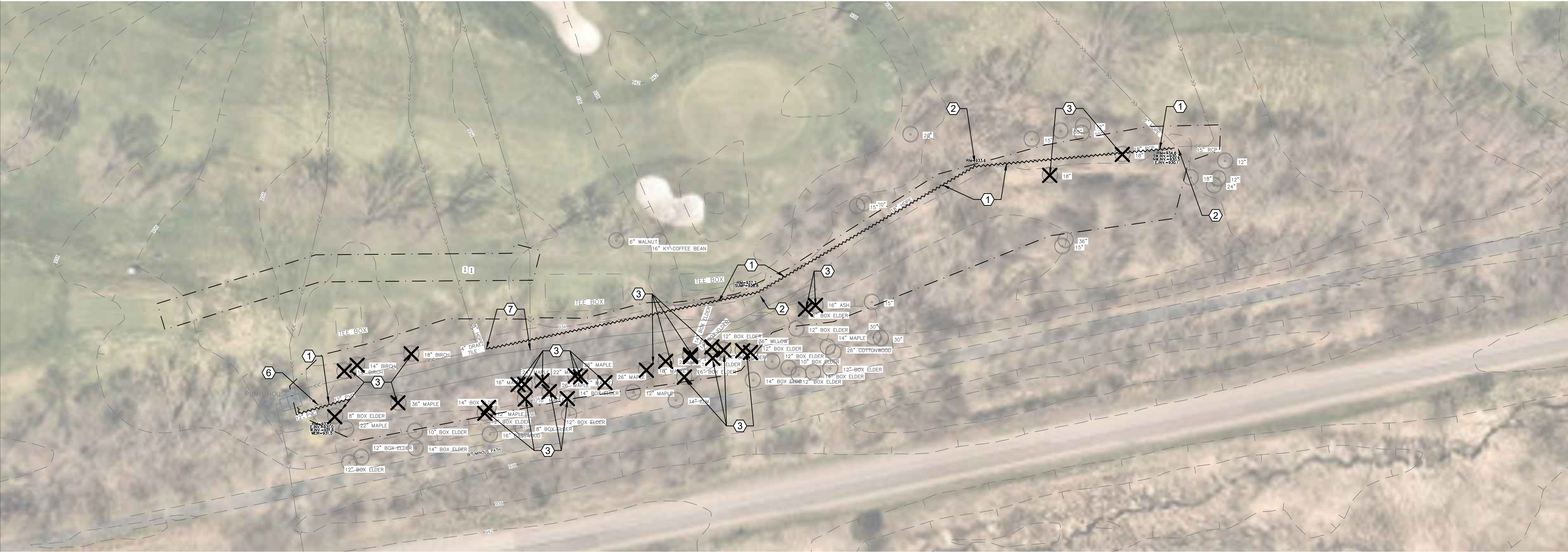
PAGE: 5 OF 24

PLOTTED:  
4/21/2025

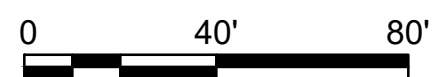
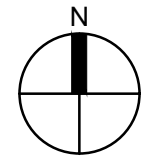
COMM. NO.  
17701



Jun 06, 2025 - 2:41pm  
Xref Filename: \\17701\_s\_base\17701\_title Block\17701\_title Block\17701\_c\_demo.dwg  
Y:\17700\17701 WOODHILL CC - DRAINAGE STUDY - WAYZATA\_07 Civil\_01 CAD files\01 SHEETS\17701\_c\_demo.dwg



1 DEMO PLAN SOUTHEAST  
SCALE: 1"=40'



KEY MAP



## CONTRACTOR NOTES

1. UTILITIES MUST BE LOCATED PRIOR TO EXCAVATION OR GRADING ON SITE. CALL GOPHER STATE ONE CALL AT 1-800-252-1166 AS SOON AS POSSIBLE TO SCHEDULE UTILITY LOCATIONS.
2. CONTRACTOR TO PROTECT ALL EXISTING SITE ELEMENTS NOT NOTED FOR REMOVAL.
3. ALL EXISTING UTILITIES SHOWN THROUGHOUT THIS PLAN ARE APPROXIMATE. FIELD VERIFY PIPE SIZE, MATERIAL AND LOCATION. ANY DISCREPANCIES FOUND IN THE FIELD SHALL BE DIRECTED TO THE ENGINEER IMMEDIATELY.

## KEY NOTES

- 1 REMOVE EXISTING PIPE
- 2 REMOVE EXISTING INLET STRUCTURE
- 3 REMOVE TREE
- 4 SALVAGE EX. GRAVEL SURFACE
- 5 PLUG END + ABANDON PIPE IN PLACE
- 6 REMOVE CONCRETE WEIR STRUCTURE
- 7 REMOVE DRAINTILE TO NEW DAYLIGHT POINT. SEE PROPOSED GRADING.  
NOTE: OTHERS NOT SHOWN BUT LIKELY TO EXIST

## LEGEND

- PROPERTY LIMITS
- CONSTRUCTION LIMITS
- EXISTING WATERMAIN
- EXISTING SANITARY SEWER
- EXISTING STORM SEWER
- EXISTING FENCE
- EXISTING GAS MAIN
- EXISTING OVERHEAD WIRES
- EXISTING TELEPHONE
- EXISTING UNDERGROUND ELECTRIC
- EXISTING IRRIGATION VAULT
- EXISTING SPRINKLER HEAD
- EXISTING STORM SEWER INLET
- REMOVE EXISTING UTILITY LINE
- REMOVE EXISTING ASPHALT PAVEMENT
- REMOVE EXISTING GRAVEL PAVEMENT
- REMOVE TREE



**ANDERSON**

13605 1st Avenue N. #100  
Plymouth, MN 55441 | [ae-mn.com](http://ae-mn.com)  
P 763.412.4000 | F 763.412.4090  
Anderson Engineering of Minnesota, LLC

## STORMWATER INFRASTRUCTURE IMPROVEMENTS

WOODHILL COUNTRY CLUB  
200 WOODHILL RD  
WAYZATA, MINNESOTA

I HEREBY CERTIFY THAT THIS PLAN, SPECIFICATION, OR REPORT WAS PREPARED BY ME OR UNDER MY DIRECT SUPERVISION AND THAT I AM A DULY LICENSED PROFESSIONAL ENGINEER UNDER THE LAWS OF THE STATE OF MINNESOTA.

PRINT NAME: KYLE STEBBING, PE

SIGNATURE: *K. Stebbing*

DATE: 6/6/2025 LICENSE NO. 61855

### REVISION LOG

| NO. | DATE | DESCRIPTION OF REVISIONS |
|-----|------|--------------------------|
|     |      |                          |
|     |      |                          |
|     |      |                          |
|     |      |                          |
|     |      |                          |
|     |      |                          |
|     |      |                          |

### CONSTRUCTION DOCUMENTS

|           |        |             |
|-----------|--------|-------------|
| DESIGNED: | DRAWN: | CHECKED BY: |
| KS        | KS     | AT          |

### DRAWING TITLE

DEMO PLAN

DRAWING NO.

CD105

PAGE: 6 OF 24

|           |           |
|-----------|-----------|
| PLOTTED:  | COMM. NO. |
| 4/21/2025 | 17701     |

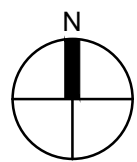


Jun 06, 2025 - 2:41pm  
Xref Filename: 17701\_s\_base  
KStebbing  
Y:\17700\17701 WOODHILL CC - DRAINAGE STUDY - WAYZATA\_07 Civil\_01 CAD files\_01 SHEETS\17701\_C\_DEMO.dwg



1

CARTH PATH DEMO PLAN EAST  
SCALE: 1" = 100'



0 40' 80'

## LEGEND

|  |                                  |
|--|----------------------------------|
|  | PROPERTY LIMITS                  |
|  | CONSTRUCTION LIMITS              |
|  | EXISTING WATERMAIN               |
|  | EXISTING SANITARY SEWER          |
|  | EXISTING STORM SEWER             |
|  | EXISTING FENCE                   |
|  | EXISTING GAS MAIN                |
|  | EXISTING OVERHEAD WIRES          |
|  | EXISTING TELEPHONE               |
|  | EXISTING UNDERGROUND ELECTRIC    |
|  | EXISTING IRRIGATION VAULT        |
|  | EXISTING SPRINKLER HEAD          |
|  | EXISTING STORM SEWER INLET       |
|  | REMOVE EXISTING UTILITY LINE     |
|  | REMOVE EXISTING ASPHALT PAVEMENT |
|  | REMOVE EXISTING GRAVEL PAVEMENT  |
|  | REMOVE TREE                      |

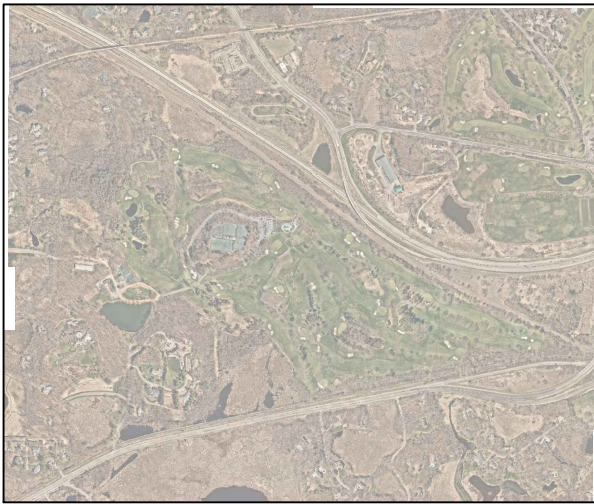
## KEY NOTES

- 1 REMOVE EXISTING PIPE
- 2 REMOVE EXISTING INLET STRUCTURE
- 3 REMOVE TREE
- 4 REMOVE EX. GRAVEL SURFACE
- 5 PLUG END + ABANDON PIPE IN PLACE
- 6 REMOVE EX. BITUMINOUS PAVEMENT

## CONTRACTOR NOTES

1. UTILITIES MUST BE LOCATED PRIOR TO EXCAVATION OR GRADING ON SITE. CALL GOPHER STATE ONE CALL AT 1-800-252-1166 AS SOON AS POSSIBLE TO SCHEDULE UTILITY LOCATIONS.
2. CONTRACTOR TO PROTECT ALL EXISTING SITE ELEMENTS NOT NOTED FOR REMOVAL.
3. ALL EXISTING UTILITIES SHOWN THROUGHOUT THIS PLAN ARE APPROXIMATE. FIELD VERIFY PIPE SIZE, MATERIAL AND LOCATION. ANY DISCREPANCIES FOUND IN THE FIELD SHALL BE DIRECTED TO THE ENGINEER IMMEDIATELY.

## KEY MAP



ANDERSON

13605 1st Avenue N. #100  
Plymouth, MN 55441 | [ae-mn.com](http://ae-mn.com)  
P 763.412.4000 | F 763.412.4090  
Anderson Engineering of Minnesota, LLC

## STORMWATER INFRASTRUCTURE IMPROVEMENTS

WOODHILL COUNTRY CLUB  
200 WOODHILL RD  
WAYZATA, MINNESOTA

I HEREBY CERTIFY THAT THIS PLAN, SPECIFICATION, OR REPORT WAS PREPARED BY ME OR UNDER MY DIRECT SUPERVISION AND THAT I AM A DULY LICENSED PROFESSIONAL ENGINEER UNDER THE LAWS OF THE STATE OF MINNESOTA.

PRINT NAME: KYLE STEBBING, PE

SIGNATURE: KStebbing

DATE: 6/6/2025 LICENSE NO. 61855

## REVISION LOG

| NO. | DATE | DESCRIPTION OF REVISIONS |
|-----|------|--------------------------|
|     |      |                          |
|     |      |                          |
|     |      |                          |
|     |      |                          |
|     |      |                          |
|     |      |                          |

## CONSTRUCTION DOCUMENTS

|                 |              |                   |
|-----------------|--------------|-------------------|
| DESIGNED:<br>KS | DRAWN:<br>KS | CHECKED BY:<br>AT |
|-----------------|--------------|-------------------|

## DRAWING TITLE

CARTH PATH DEMO

DRAWING NO.

CD106

PAGE: 8 OF 24

PLOTTED:  
4/21/2025

COMM. NO.  
17701



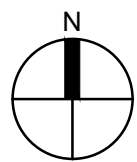
Jun 06, 2025 - 2:42pm  
Xref Filename: 17701\_s\_base\17701\_title Block\17701\_c\_base\HemCoParcels\_ByCity  
Y:\17700\17701 WOODHILL CC - DRAINAGE STUDY - WAYZATA\_07 Civil\_01 CAD files\_01 SHEETS\17701\_C\_DEMO.dwg



1

## CART PATH DEMO PLAN WEST

SCALE: 1" = 100'



0 40' 80'

## LEGEND

|  |                                  |
|--|----------------------------------|
|  | PROPERTY LIMITS                  |
|  | CONSTRUCTION LIMITS              |
|  | EXISTING WATERMAIN               |
|  | EXISTING SANITARY SEWER          |
|  | EXISTING STORM SEWER             |
|  | EXISTING FENCE                   |
|  | EXISTING GAS MAIN                |
|  | EXISTING OVERHEAD WIRES          |
|  | EXISTING TELEPHONE               |
|  | EXISTING UNDERGROUND ELECTRIC    |
|  | EXISTING IRRIGATION VAULT        |
|  | EXISTING SPRINKLER HEAD          |
|  | EXISTING STORM SEWER INLET       |
|  | REMOVE EXISTING UTILITY LINE     |
|  | REMOVE EXISTING ASPHALT PAVEMENT |
|  | REMOVE EXISTING GRAVEL PAVEMENT  |
|  | REMOVE TREE                      |

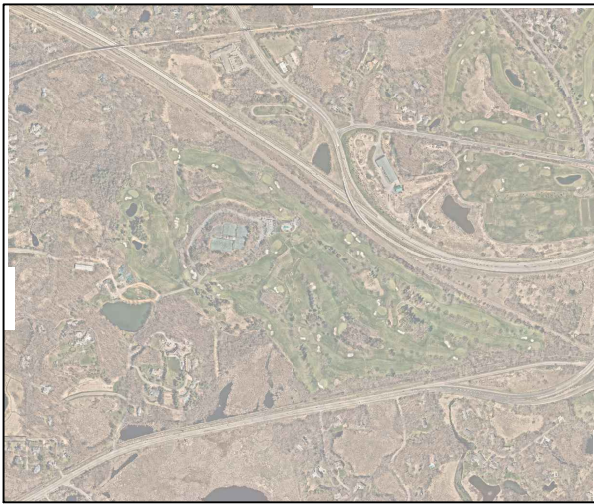
## KEY NOTES

- 1 REMOVE EXISTING PIPE
- 2 REMOVE EXISTING INLET STRUCTURE
- 3 REMOVE TREE
- 4 REMOVE EX. GRAVEL SURFACE
- 5 PLUG END + ABANDON PIPE IN PLACE
- 6 REMOVE EX. BITUMINOUS PAVEMENT

## CONTRACTOR NOTES

1. UTILITIES MUST BE LOCATED PRIOR TO EXCAVATION OR GRADING ON SITE. CALL GOPHER STATE ONE CALL AT 1-800-252-1166 AS SOON AS POSSIBLE TO SCHEDULE UTILITY LOCATIONS.
2. CONTRACTOR TO PROTECT ALL EXISTING SITE ELEMENTS NOT NOTED FOR REMOVAL.
3. ALL EXISTING UTILITIES SHOWN THROUGHOUT THIS PLAN ARE APPROXIMATE. FIELD VERIFY PIPE SIZE, MATERIAL AND LOCATION. ANY DISCREPANCIES FOUND IN THE FIELD SHALL BE DIRECTED TO THE ENGINEER IMMEDIATELY.

## KEY MAP



ANDERSON

13605 1st Avenue N. #100  
Plymouth, MN 55441 | [ae-mn.com](http://ae-mn.com)  
P 763.412.4000 | F 763.412.4090  
Anderson Engineering of Minnesota, LLC

## STORMWATER INFRASTRUCTURE IMPROVEMENTS

WOODHILL COUNTRY CLUB  
200 WOODHILL RD  
WAYZATA, MINNESOTA

I HEREBY CERTIFY THAT THIS PLAN, SPECIFICATION, OR REPORT WAS PREPARED BY ME OR UNDER MY DIRECT SUPERVISION AND THAT I AM A DULY LICENSED PROFESSIONAL ENGINEER UNDER THE LAWS OF THE STATE OF MINNESOTA.

PRINT NAME: KYLE STEBBING, PE

SIGNATURE: *K. Stebbing*

DATE: 6/6/2025 LICENSE NO. 61855

## REVISION LOG

| NO. | DATE | DESCRIPTION OF REVISIONS |
|-----|------|--------------------------|
|     |      |                          |
|     |      |                          |
|     |      |                          |
|     |      |                          |
|     |      |                          |
|     |      |                          |
|     |      |                          |

## CONSTRUCTION DOCUMENTS

|           |        |             |
|-----------|--------|-------------|
| DESIGNED: | DRAWN: | CHECKED BY: |
| KS        | KS     | AT          |

## DRAWING TITLE

CARTH PATH  
DEMO

DRAWING NO.

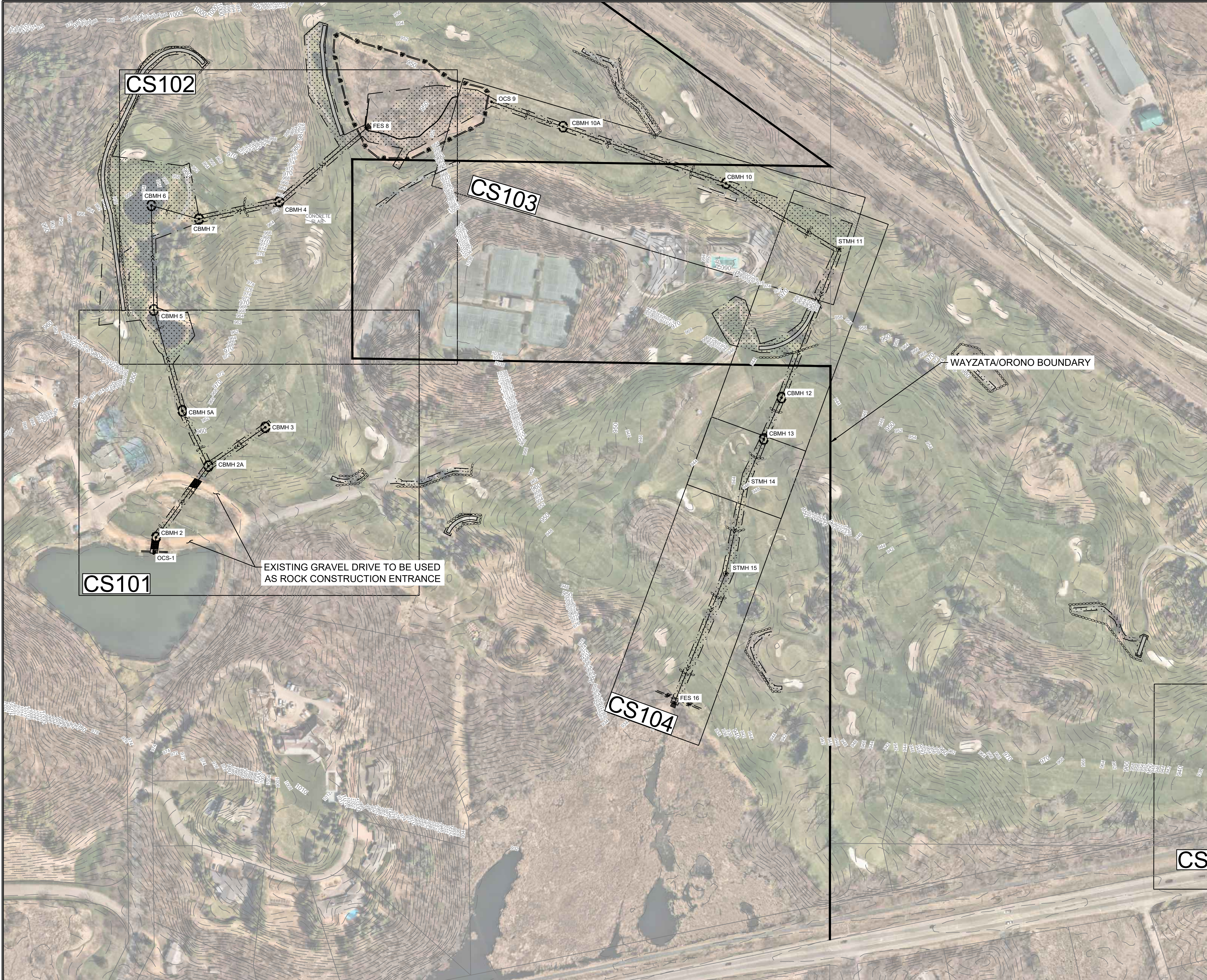
CD107

PAGE: 7 OF 24

PLOTTED:  
4/21/2025

COMM. NO.  
17701





LEGEND

- CONSTRUCTION LIMITS
- PROPOSED BITUMINOUS PAVEMENT
- PROPOSED GRAVEL PAVEMENT
- GRASS SEEDING AREAS
- SF SILT FENCE
- SEDIMENT CONTROL LOG
- PROPOSED STORM SEWER PIPE
- PROPOSED CONTOUR
- PROPOSED FLARED END SECTION
- PROPOSED CATCH BASIN/MANHOLE
- PROTECT INLET W/ SILT FENCE SEE DETAIL 1/C500

GENERAL NOTES

- UTILITIES SHOWN HERE ARE FOR INFORMATIONAL USE ONLY AND ARE NOT GUARANTEED IN THEIR ACCURACY. VERIFY WORK. NOTIFY ENGINEER OF ANY/ALL DISCREPANCIES IMMEDIATELY.
- UTILITIES MUST BE LOCATED PRIOR TO EXCAVATION OR GRADING ON ANY SITE. CALL GOPHER STATE ONE CALL AT 1-800-252-1166 AS SOON AS POSSIBLE TO SCHEDULE UTILITY LOCATIONS FOR THIS SITE.
- PROTECT ALL EXISTING IMPROVEMENT NOT NOTED FOR REMOVAL. CONTRACTOR TO REPAIR/REPLACE DAMAGES DUE TO THEIR WORK.
- REFERENCE SHEET CP201 TO CP204 FOR STORM SEWER PROFILES. REFERENCE SHEET C500 & C501 FOR STORM SEWER CONSTRUCTION DETAILS



ANDERSON

13605 1st Avenue N. #100  
Plymouth, MN 55441 | [ae-mn.com](http://ae-mn.com)  
P 763.412.4000 | F 763.412.4090  
Anderson Engineering of Minnesota, LLC

STORMWATER  
INFRASTRUCTURE  
IMPROVEMENTS

WOODHILL COUNTRY CLUB  
200 WOODHILL RD  
WAYZATA, MINNESOTA

I HEREBY CERTIFY THAT THIS PLAN, SPECIFICATION, OR REPORT WAS PREPARED BY ME OR UNDER MY DIRECT SUPERVISION AND THAT I AM A DULY LICENSED PROFESSIONAL ENGINEER UNDER THE LAWS OF THE STATE OF MINNESOTA.

PRINT NAME: KYLE STEBBING, PE

SIGNATURE: *K. Stebbing*

DATE: 6/6/2025 LICENSE NO. 61855

REVISION LOG

| NO. | DATE | DESCRIPTION OF REVISIONS |
|-----|------|--------------------------|
|     |      |                          |
|     |      |                          |
|     |      |                          |
|     |      |                          |
|     |      |                          |
|     |      |                          |

CONSTRUCTION DOCUMENTS

|                 |              |                   |
|-----------------|--------------|-------------------|
| DESIGNED:<br>KS | DRAWN:<br>KS | CHECKED BY:<br>AT |
|-----------------|--------------|-------------------|

DRAWING TITLE

OVERALL  
UTILITY &  
GRADING PLAN

DRAWING NO.

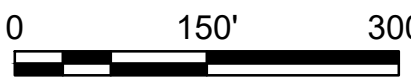
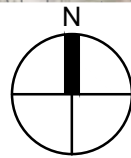
CS100

PAGE: 9 OF 24

|                       |                    |
|-----------------------|--------------------|
| PLOTTED:<br>4/21/2025 | COMM. NO.<br>17701 |
|-----------------------|--------------------|

1 OVERALL UTILITY AND GRADING PLAN

SCALE: 1"=150'







# ANDERSON

13605 1st Avenue N. #100  
Plymouth, MN 55441 | [ae-mn.com](http://ae-mn.com)  
**P** 763.412.4000 | **F** 763.412.4090  
Anderson Engineering of Minnesota, LLC

# STORMWATER INFRASTRUCTURE IMPROVEMENTS

WOODHILL COUNTRY CLUB  
200 WOODHILL RD  
WAYZATA, MINNESOTA

I HEREBY CERTIFY THAT THIS PLAN, SPECIFICATION, OR REPORT WAS PREPARED BY ME OR UNDER MY DIRECT SUPERVISION AND THAT I AM A DULY LICENSED PROFESSIONAL ENGINEER UNDER THE LAWS OF THE STATE OF MINNESOTA.

PRINT NAME: KYLE STEBBING, PE

SIGNATURE: 15/10/20

DATE: 6/6/2025 LICENSE NO. 61855

## REVISION LOG

[illegible]

# CONSTRUCTION DOCUMENTS

|                 |              |                   |
|-----------------|--------------|-------------------|
| DESIGNED:<br>KS | DRAWN:<br>KS | CHECKED BY:<br>AT |
|-----------------|--------------|-------------------|

## DRAWING TITLE

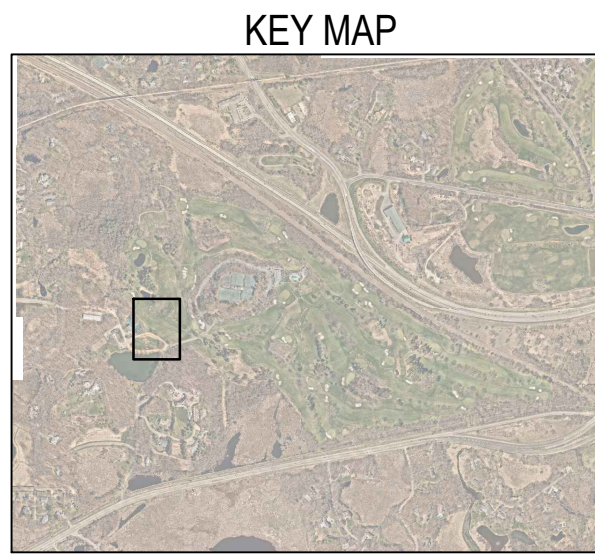
# UTILITY & GRADING PLAN












DRAWING NO.

CS101

PAGE: 10 OF 24

|           |           |
|-----------|-----------|
| PLOTTED:  | COMM. NO. |
| 4/21/2025 | 17701     |



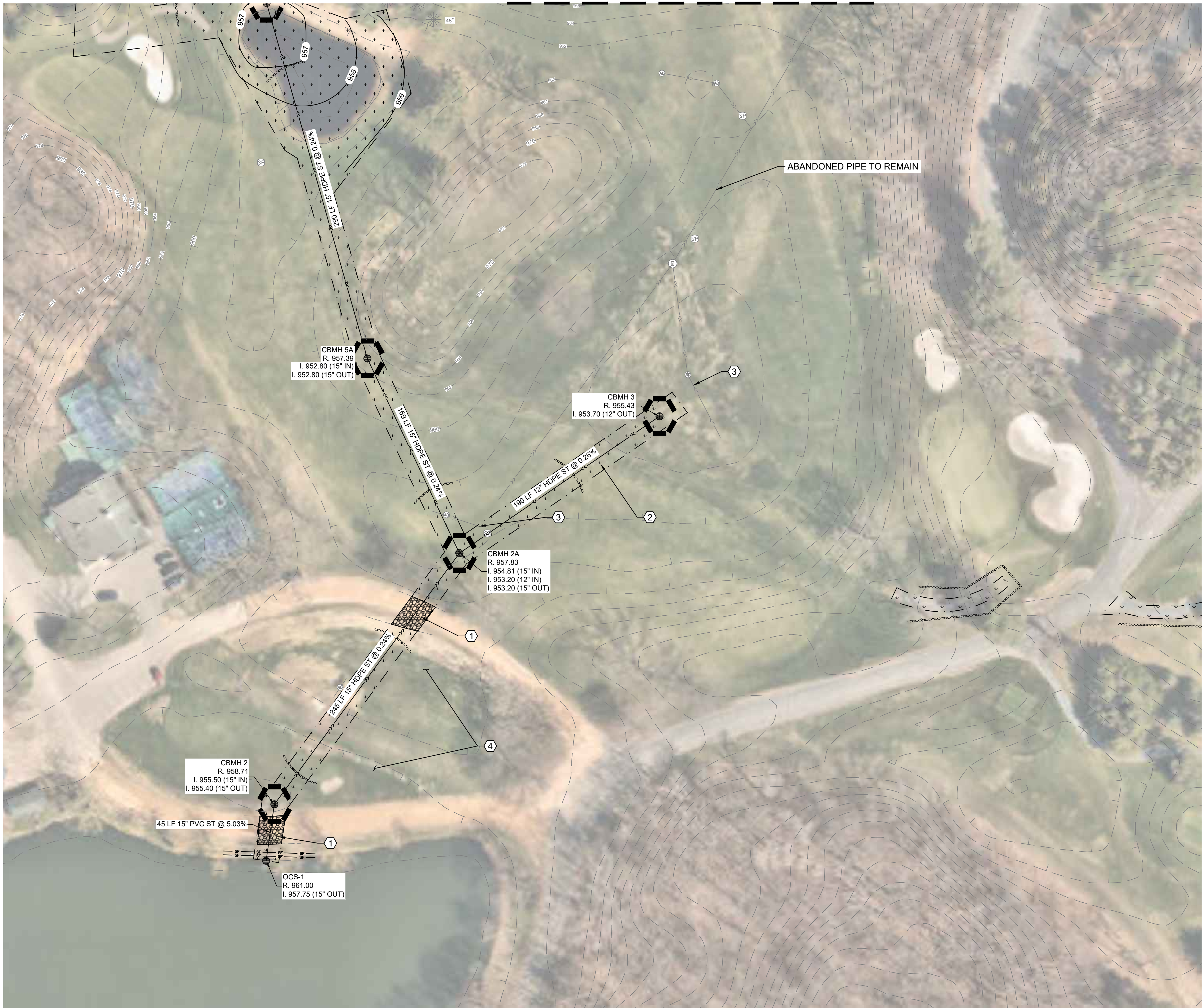
-  CONSTRUCTION LIMITS  
 PROPOSED BITUMINOUS PAVEMENT  
 PROPOSED GRAVEL PAVEMENT  
 GRASS SEEDING AREAS  
 SILT FENCE  
 SEDIMENT CONTROL LOG  
 PROPOSED STORM SEWER PIPE  
 PROPOSED CONTOUR  
 PROPOSED FLARED END SECTION  
 PROPOSED CATCH BASIN/MANHOLE  
 PROTECT INLET W/ SILT FENCE SEE  
 DETAIL 1/C500

## KEY NOTES

- ① INSTALL SALVAGED GRAVEL TO MATCH
- ② REFER TO GOLF COURSE PLANS FOR SEEDING MIXES + ADDITIONAL RESTORATION INFORMATION
- ③ CONNECT EXISTING DRAINAGE LATERAL TO NEW WORK OR COORDINATE NEW DRAINAGE LATERALS WITH THESE PLANS
- ④ POTENTIAL FOR NON-COURSE RELATED UTILITIES EXISTS IN THIS AREA. CONTRACTOR TO EMPLOY PRIVATE UTILITY LOCATOR PRIOR TO BEGINNING WORK.

## GENERAL NOTES

1. UTILITIES SHOWN HERE ARE FOR INFORMATIONAL USE ONLY AND ARE NOT GUARANTEED IN THEIR ACCURACY. VERIFY WORK. NOTIFY ENGINEER OF ANY/ALL DISCREPANCIES IMMEDIATELY.
2. UTILITIES MUST BE LOCATED PRIOR TO EXCAVATION OR GRADING ON ANY SITE. CALL GOPHER SATE ONE CALL AT 1-800-252-1166 AS SOON AS POSSIBLE TO SCHEDULE UTILITY LOCATIONS FOR THIS SITE.
3. PROTECT ALL EXISTING IMPROVEMENT NOT NOTED FOR REMOVAL. CONTRACTOR TO REPAIR/REPLACE DAMAGES DUE TO THEIR WORK.
4. REFERENCE SHEET CP201 TO CP204 FOR STORM SEWER PROFILES. REFERENCE SHEET C500 & C501 FOR CONSTRUCTION DETAILS.
5. PROPOSED PIPE MATERIALS SHALL BE PVC SDR 35 OR DUAL-WALL HDPE MEETING ASTM F2648.



1

## UTILITY AND GRADING PLAN WEST

SCALE: 1"=40'

