

## **NARRATIVE**

### Project Description

- The purpose of this project is to construct a fiber optic network within the entire city of Shorewood, MN for Midcontinent Communications (Midco). The project entails multiple crossings that fall within the watersheds district. All crossings in the area will be permitted under one permit.
- All the proposed crossings will be horizontally directionally drilled; with the drill being set up a minimum of 100' away from each of the said crossings, unless noted otherwise on overviews.

### Planned Erosion and Sedimentation Control Practices

-Our method of installation will not require surface destabilization; only if/when other existing utilities impede our path to installation will destabilization be required. If needed, surface stabilization will be accomplished with existing vegetation, straw mats and straw wattles until regrowth occurs in affected areas. Affected areas will be hand dug holes to locate any potential utilities in conflict with the installation of the proposed utility. Those potential affected areas will not be known until proximity to the installation date.

-For setbacks under 100' due to geographic or existing roadway circumstances, straw wattles will be placed around the drill rig until drilling is complete. Once the drill rig is removed from the location, The first erosion control practice(s) will be utilized for the area within the wattles as stated in the previous paragraph. The wattles originally around the drill will remain until regrowth occurs within the affected area. The specific location for the drill to be setup within 100' will be carefully selected so as to maintain stream or wetland integrity with minimal disturbance to be re-stabilized.

## **CONSTRUCTION SCHEDULE**

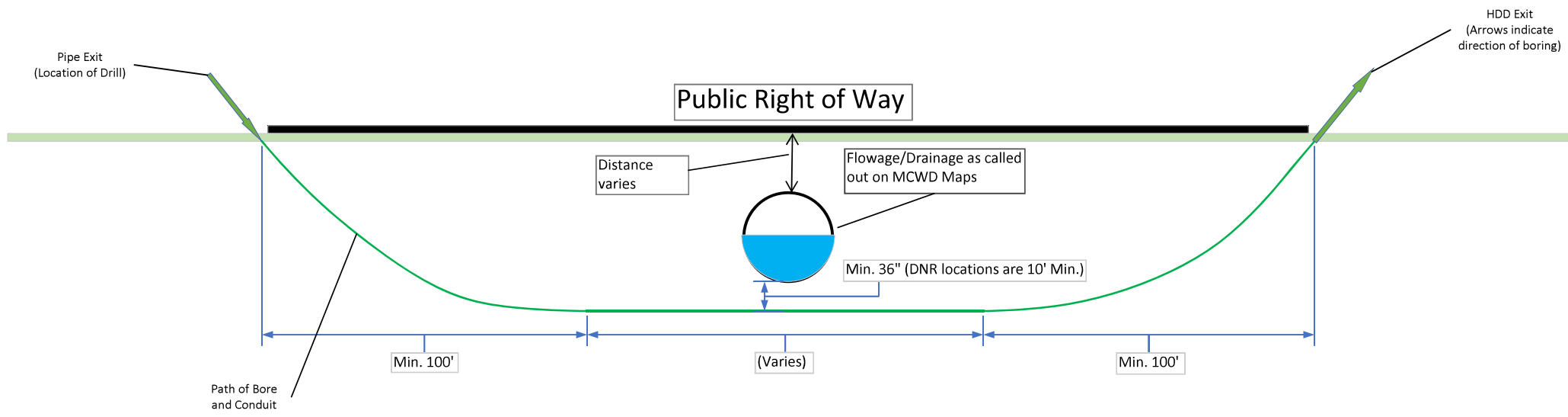
1. Obtain plan approval and other applicable permits.
2. Flag the work area and note setbacks for equipment no closer than 100 feet from waterbody.
3. If a disturbance in the soil is necessary, straw wattles will be placed near the soil collection mounds to impede runoff or erosion to the waterbody. (See also under 100 foot setback erosion plan)
4. Install conduit under waterway/wetland in accordance with this permit.
5. Disturbed areas will be backfilled, compacted to 3" lower than grade; loose fill soil will then be placed to grade with seed to initiate re-stabilization.
6. Install temporary straw mats and wattles over and around any destabilized surface areas that were required for the installation of the conduit.
7. All soil and erosion control methods implemented will be monitored after rainfall events and no longer than weekly. Needed repairs will be made promptly.
8. After site(s) is stabilized, remove all temporary measures.

### **Reroute Statement**

We are servicing fiber optic cable to all parcels within City limits. Reroute(s), while technically possible, would not eliminate substantial amounts of watershed stream locations. Reroute(s) that would lower the overall number affected locations would simultaneously prohibit certain parcels from being able to be serviced with fiber optic cables for our project. We will be horizontally Directionally drilling everything, setting up at a minimum of 100' from the stream or waterbody. Minimal impact will be exercised at all locations.

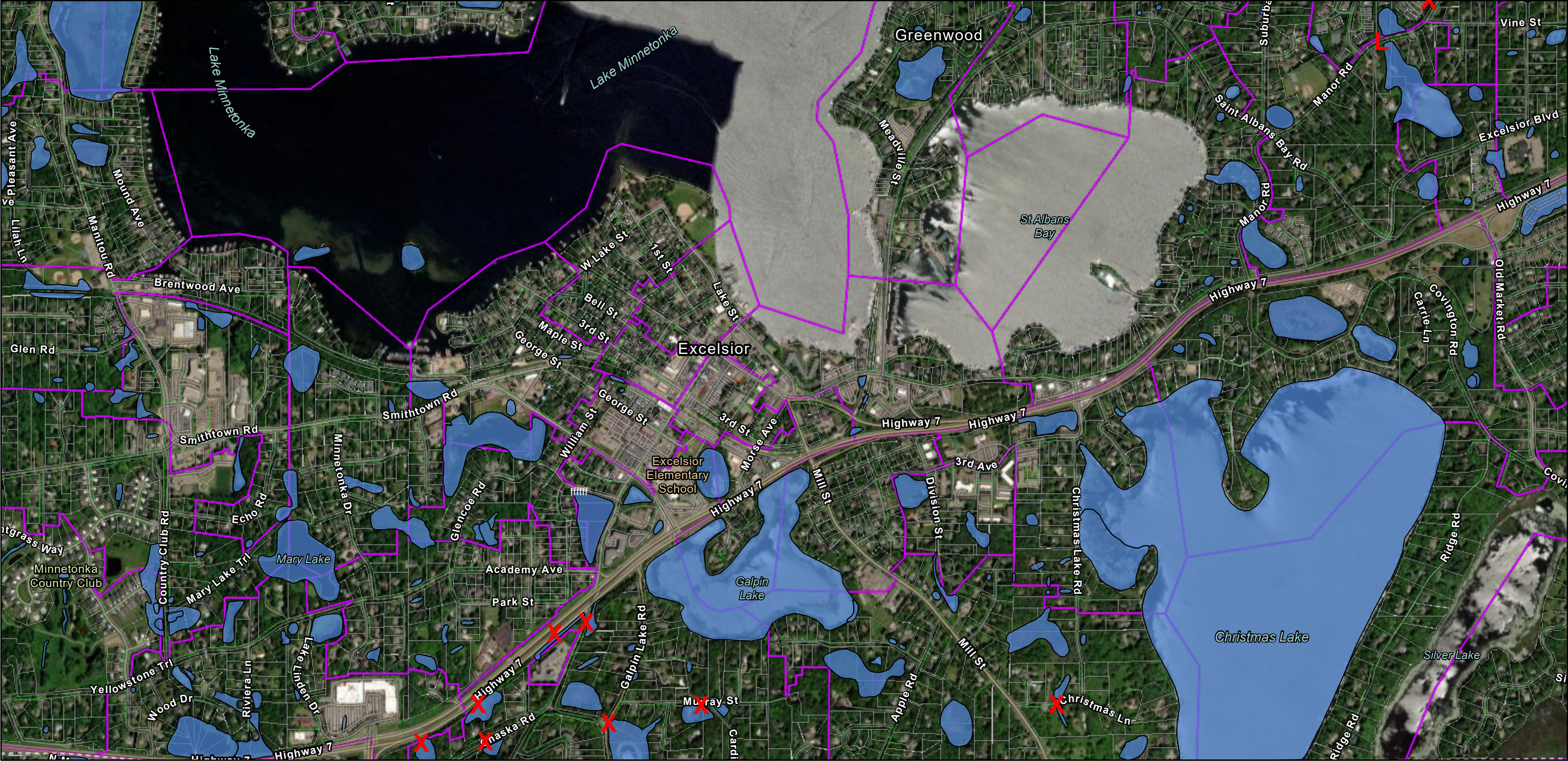
### **General Overview**

Overviews of each crossing or parallel are included in this permit application. The MCWD Stream Order Map, MS4 Data Set and the Functional Assessment of Wetlands feature layers were overlayed onto our mapping system temporarily for ease of visualization. These overviews will indicate which side of a public road right-of-way we intend to drill. The specific distance from centerline will be determined when locates become valid during construction. Due diligence will be taken when choosing the route to be as minimally invasive as possible. The specific location of the bore path start pit and stop pit will vary but will be **at least 100'** from the wetland or stream, unless noted otherwise on the overviews. For the "wetlands" that are encompassed by houses and roads, overviews are included in this permit application with a note that the 100' rule will not apply. For the locations with no water present, an image of the location will be placed after the overview images. A side profile will be included at the beginning of the permit pack. Those specifications indicated will be followed anytime there is a culvert or flowing water present. There are a few locations that also require a MNDNR Utility permit. Those locations we are mandated to be 10' below culvert and or thalweg.





# MCWD Permit Overview



1/26/2026, 1:43:44 PM

MCWD\_FAW\_gdb - MCWD\_FAW Trench

Fiber Address Point

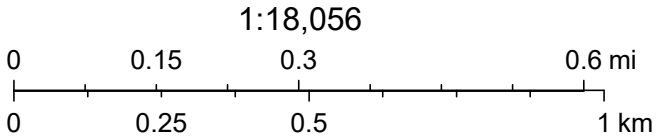
FTTx Boundaries

<all other values>

No

Yes

Strand



Esri Community Maps Contributors, Metropolitan Council, MetroGIS, Three Rivers Park District, MN Dept Natural Resources, Esri, TomTom, Garmin, SafeGraph, GeoTechnologies, Inc, METI/ NASA, USGS, EPA, NPS, US Census Bureau, USDA, USFWS, Vantor

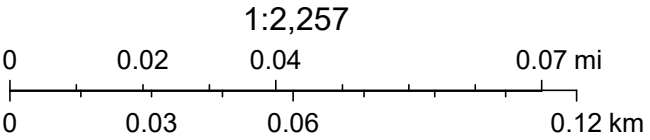


# Radisson Road



1/19/2026, 3:19:09 PM

<div>MCWD_FAW_gdb - MCWD_FAW</div>	<div>6 Port</div>	<div>Partial Owned</div>	<div>Standard</div>	<div>FiberSlackLoop</div>	<div>Trench</div>	<div>Apt Box</div>
<div>FTTx Boundaries</div>	<div>6 Port OTE</div>	<div>Leased</div>	<div>Patch Locations</div>	<div>TransitionPoint</div>	<div>&lt;all other values&gt;</div>	<div>Vault</div>
<div>Fiber Drop</div>	<div>8 Port</div>	<div>Tap Pigtail</div>	<div>Head End</div>	<div>DemarcationPoint</div>	<div>No</div>	<div>SupportStructure</div>
<div>Fiber Taps</div>	<div>8 Port OTE</div>	<div>VHub</div>	<div>OTN</div>	<div>Riser</div>	<div>Yes</div>	<div>UndergroundJunction</div>
<div>2 Port</div>	<div>12, &lt;NULL&gt;</div>	<div>1_Splice Point</div>	<div>COLO</div>	<div>Fiber Address Point</div>	<div>Strand</div>	<div>BoreHole</div>
<div>2 Port OTE</div>	<div>12, Y</div>	<div>Buried</div>	<div>Vertical Asset</div>	<div>MduBoundary</div>	<div>UndergroundStructure</div>	<div>Junction</div>
<div>4 Port</div>	<div>FiberOpticCable</div>	<div>Inaccessible</div>	<div>FiberFault</div>	<div>RFDrop</div>	<div>&lt;all other values&gt;</div>	<div>Address Point</div>
<div>4 Port OTE</div>	<div>Midco Owned</div>	<div>PON Access</div>			<div>Ped</div>	



Microsoft, Vantor, Esri Community Maps Contributors, Metropolitan Council, MetroGIS, Three Rivers Park District, MN Dept Natural Resources, © OpenStreetMap, Microsoft, Esri, TomTom, Garmin, SafeGraph, GeoTechnologies, Inc, METI/NASA, USGS, EPA, NPS, US Census Bureau, USDA, USFWS

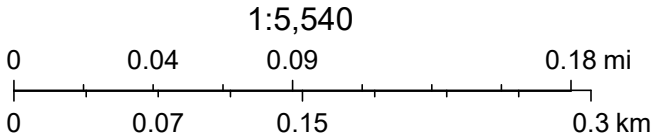


Manor Rd



1/20/2026, 7:37:05 AM

<div></div> MCWD_FAW_gdb - MCWD_FAW	<div>6</div> 6 Port OTE	<div></div> Leased	<div></div> Patch Locations	<div></div> TransitionPoint	<div></div> Strand	<div></div> 0.413	<div></div> 0.625	<div></div> 0.840
<div></div> FTTx Boundaries	<div>8</div> 8 Port	<div></div> Tap Pigtail	<div></div> Head End	<div></div> DemarcationPoint	<div></div> ChangesNeeded	<div></div> 0.440	<div></div> 0.650	<div></div> 0.860
Fiber Taps	<div>8</div> 8 Port OTE	<div></div> VHub	<div></div> OTN	<div></div> Riser	<div></div> RFDoNotBuildBoundary	<div></div> 0.500	<div></div> 0.700	<div></div> 0.875
<div>2</div> 2 Port	<div>12</div> 12, <NULL>	<div></div> 1_Splice Point	<div></div> COLO	<div></div> Fiber Address Point	<div></div> Node Boundaries	<div></div> 0.501	<div></div> 0.715	<div></div> 1.000
<div>2</div> 2 Port OTE	<div>12</div> 12, Y	<div></div> Buried	<div></div> Vertical Asset	<div></div> Trench	<div></div> Power Supply Boundaries	<div></div> 0.502	<div></div> 0.750	<div></div> 1.125
<div>4</div> 4 Port	<div></div> FiberOpticCable	<div></div> Inaccessible	<div></div> FiberFault	<div></div> <all other values>	<div></div> Cable	<div></div> 0.540	<div></div> 0.751	<div></div> 1.160
<div>4</div> 4 Port OTE	<div></div> Midco Owned	<div></div> PON Access	<div></div> FiberSlackLoop	<div></div> No	<div></div> <all other values>	<div></div> 0.565	<div></div> 0.752	<div></div> 1.250
<div>6</div> 6 Port	<div></div> Partial Owned	<div></div> Standard		<div></div> Yes	<div></div> 0.412			



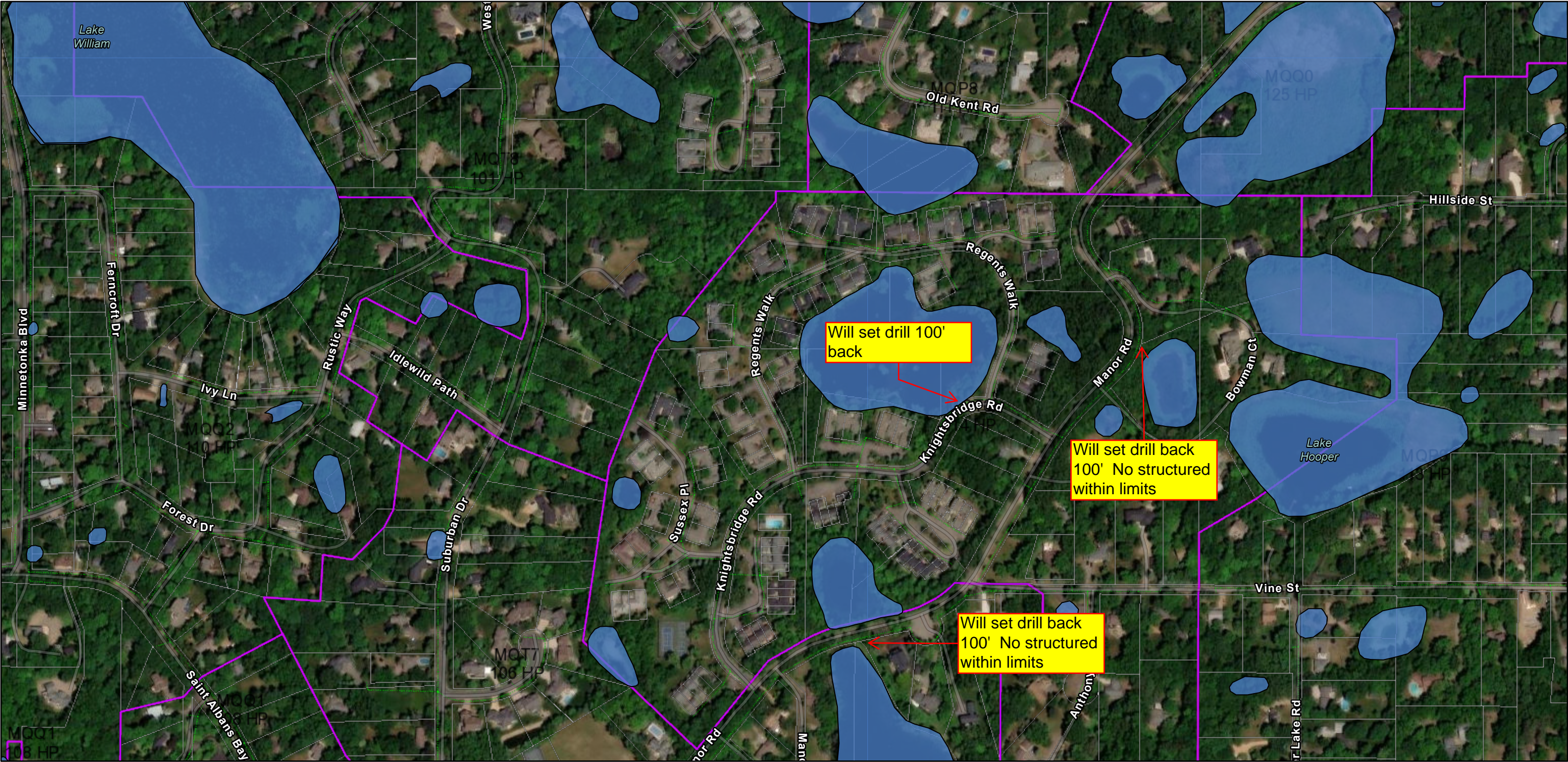
Source: Esri, Vantor, Earthstar Geographics, and the GIS User Community, Esri Community Maps Contributors, Metropolitan Council, MetroGIS, Three Rivers Park District, MN Dept Natural Resources, © OpenStreetMap, Microsoft, Esri, TomTom, Garmin, SafeGraph, GeoTechnologies, Inc, METI/NASA, USGS, EPA, NPS,

Web AppBuilder for ArcGIS

Source: Esri, Vantor, Earthstar Geographics, and the GIS User Community | Esri Community Maps Contributors, Metropolitan Council, MetroGIS, Three Rivers Park District, MN Dept Natural Resources, © OpenStreetMap, Microsoft, Esri, TomTom, Garmin, SafeGraph, GeoTechnologies, Inc, METI/NASA, USGS, EPA,

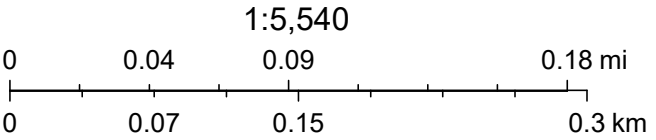


# KnightsbridgeRd



1/20/2026, 7:41:25 AM

<div>MCWD_FAW_gdb - MCWD_FAW</div>	<div>6 Port OTE</div>	<div>Leased</div>	<div>Patch Locations</div>	<div>TransitionPoint</div>	<div>Strand</div>	<div>0.413</div>	<div>0.625</div>	<div>0.840</div>
<div>FTTx Boundaries</div>	<div>8 Port</div>	<div>Tap Pigtail</div>	<div>Head End</div>	<div>DemarcationPoint</div>	<div>ChangesNeeded</div>	<div>0.440</div>	<div>0.650</div>	<div>0.860</div>
<div>Fiber Taps</div>	<div>8 Port OTE</div>	<div>VHub</div>	<div>OTN</div>	<div>Riser</div>	<div>RFDNotBuildBoundary</div>	<div>0.500</div>	<div>0.700</div>	<div>0.875</div>
<div>2 Port</div>	<div>12, &lt;NULL&gt;</div>	<div>1_Splice Point</div>	<div>COLO</div>	<div>Fiber Address Point</div>	<div>Node Boundaries</div>	<div>0.501</div>	<div>0.715</div>	<div>1.000</div>
<div>2 Port OTE</div>	<div>12, Y</div>	<div>Buried</div>	<div>Vertical Asset</div>	<div>Trench</div>	<div>Power Supply Boundaries</div>	<div>0.502</div>	<div>0.750</div>	<div>1.125</div>
<div>4 Port</div>	<div>FiberOpticCable</div>	<div>Inaccessible</div>	<div>FiberFault</div>	<div>&lt;all other values&gt;</div>	<div>Cable</div>	<div>0.540</div>	<div>0.751</div>	<div>1.160</div>
<div>4 Port OTE</div>	<div>Midco Owned</div>	<div>PON Access</div>	<div>FiberSlackLoop</div>	<div>No</div>	<div>&lt;all other values&gt;</div>	<div>0.565</div>	<div>0.752</div>	<div>1.250</div>
<div>6 Port</div>	<div>Partial Owned</div>	<div>Standard</div>		<div>Yes</div>	<div>0.412</div>			



Source: Esri, Vantor, Earthstar Geographics, and the GIS User Community, Esri Community Maps Contributors, Metropolitan Council, MetroGIS, Three Rivers Park District, MN Dept Natural Resources, © OpenStreetMap, Microsoft, Esri, TomTom, Garmin, SafeGraph, GeoTechnologies, Inc, METI/NASA, USGS, EPA, NPS,

Web AppBuilder for ArcGIS

Source: Esri, Vantor, Earthstar Geographics, and the GIS User Community | Esri Community Maps Contributors, Metropolitan Council, MetroGIS, Three Rivers Park District, MN Dept Natural Resources, © OpenStreetMap, Microsoft, Esri, TomTom, Garmin, SafeGraph, GeoTechnologies, Inc, METI/NASA, USGS, EPA,

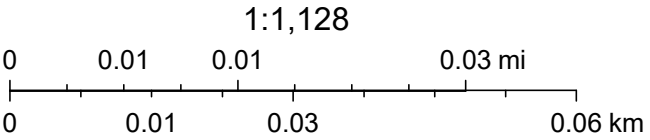


# 21355 Christmas Ln



1/19/2026, 2:57:27 PM

<div>MCWD_FAW_gdb - MCWD_FAW</div>	<div>6 Port</div>	<div>Partial Owned</div>	<div>Standard</div>	<div>FiberSlackLoop</div>	<div>Trench</div>	<div>Apt Box</div>
<div>FTTx Boundaries</div>	<div>6 Port OTE</div>	<div>Leased</div>	<div>Patch Locations</div>	<div>TransitionPoint</div>	<div>&lt;all other values&gt;</div>	<div>Vault</div>
<div>Fiber Drop</div>	<div>8 Port</div>	<div>Tap Pigtail</div>	<div>Head End</div>	<div>DemarcationPoint</div>	<div>No</div>	<div>DownGuy</div>
<div>Fiber Taps</div>	<div>8 Port OTE</div>	<div>VHub</div>	<div>OTN</div>	<div>Riser</div>	<div>Yes</div>	<div>&lt;all other values&gt;</div>
<div>2 Port</div>	<div>12, &lt;NULL&gt;</div>	<div>1_Splice Point</div>	<div>COLO</div>	<div>Fiber Address Point</div>	<div>Strand</div>	<div>Existing</div>
<div>2 Port OTE</div>	<div>12, Y</div>	<div>Buried</div>	<div>Vertical Asset</div>	<div>MduBoundary</div>	<div>UndergroundStructure</div>	<div>Overhead</div>
<div>4 Port</div>	<div>FiberOpticCable</div>	<div>Inaccessible</div>	<div>FiberFault</div>	<div>RFDrop</div>	<div>&lt;all other values&gt;</div>	<div>Set Anchor</div>
<div>4 Port OTE</div>	<div>Midco Owned</div>	<div>PON Access</div>			<div>Ped</div>	<div>Set Sidewalk Anchor; Set Sidewalk Existing</div>



Source: Esri, Vantor, Earthstar Geographics, and the GIS User Community, Esri Community Maps Contributors, Metropolitan Council, MetroGIS, Three Rivers Park District, MN Dept Natural Resources, © OpenStreetMap, Microsoft, Esri, TomTom, Garmin, SafeGraph, GeoTechnologies, Inc, METI/NASA, USGS, EPA, NPS,

Web AppBuilder for ArcGIS

Source: Esri, Vantor, Earthstar Geographics, and the GIS User Community | Esri Community Maps Contributors, Metropolitan Council, MetroGIS, Three Rivers Park District, MN Dept Natural Resources, © OpenStreetMap, Microsoft, Esri, TomTom, Garmin, SafeGraph, GeoTechnologies, Inc, METI/NASA, USGS, EPA,

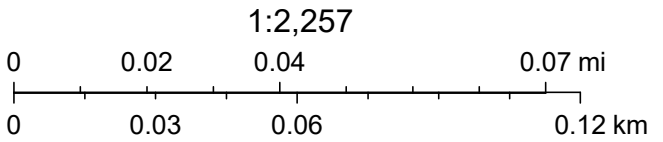


Galpin/ Mayflower, Murray, Cardinal



1/19/2026, 2:24:52 PM

<div></div> MCWD_FAW_gdb - MCWD_FAW	Trench	<div></div> UndergroundStructure	<div></div> SupportStructure
<div></div> Fiber Address Point	<div></div> <all other values>	<div></div> <all other values>	<div></div> UndergroundJunction
<div></div> MduBoundary	<div></div> No	<div></div> Ped	<div></div> BoreHole
<div></div> RFDrop	<div></div> Yes	<div></div> Apt Box	<div></div> Junction
	<div></div> Strand	<div></div> Vault	<div></div> Address Point



Microsoft, Vantor, Esri Community Maps Contributors, Metropolitan Council, MetroGIS, Three Rivers Park District, MN Dept Natural Resources, © OpenStreetMap, Microsoft, Esri, TomTom, Garmin, SafeGraph, GeoTechnologies, Inc, METI/NASA, USGS, EPA, NPS, US Census Bureau, USDA, USFWS

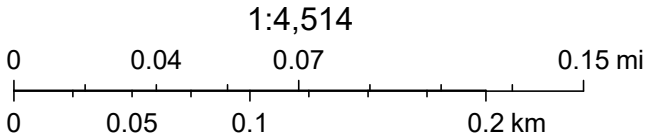


# Chaska Rd/ MN7



1/19/2026, 2:50:19 PM

	MCWD_FAW_gdb - MCWD_FAW		6 Port		FiberOpticCable		1_Splice Point		OTN		Riser		UndergroundStructure
	FTTx Boundaries		6 Port OTE		Midco Owned		Buried		COLO		Fiber Address Point		<all other values>
	Fiber Taps		8 Port		Partial Owned		Inaccessible		Vertical Asset		Trench		Ped
	2 Port		8 Port OTE		Leased		PON Access		FiberFault		<all other values>		Apt Box
	2 Port OTE		12, <NULL>		Tap Pigtail		Standard		FiberSlackLoop		No		Vault
	4 Port		12, Y		VHub		Patch Locations		TransitionPoint		Yes		SupportStructure
	4 Port OTE						Head End		DemarcationPoint		Strand		Address Point



Source: Esri, Vantor, Earthstar Geographics, and the GIS User Community, Esri Community Maps Contributors, Metropolitan Council, MetroGIS, Three Rivers Park District, MN Dept Natural Resources, © OpenStreetMap, Microsoft, Esri, TomTom, Garmin, SafeGraph, GeoTechnologies, Inc, METI/NASA, USGS, EPA, NPS,

Web AppBuilder for ArcGIS

Source: Esri, Vantor, Earthstar Geographics, and the GIS User Community | Esri Community Maps Contributors, Metropolitan Council, MetroGIS, Three Rivers Park District, MN Dept Natural Resources, © OpenStreetMap, Microsoft, Esri, TomTom, Garmin, SafeGraph, GeoTechnologies, Inc, METI/NASA, USGS, EPA,