



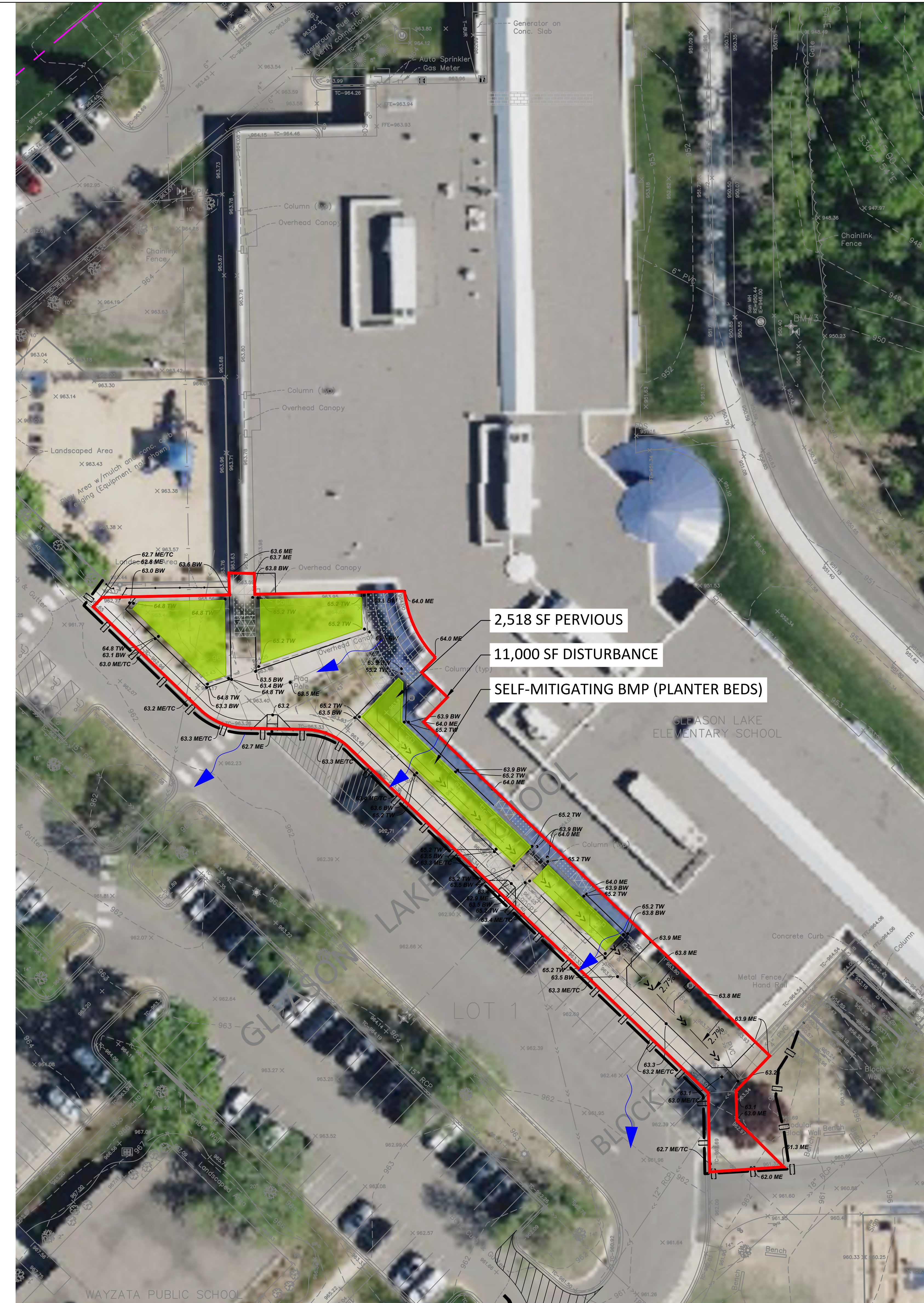
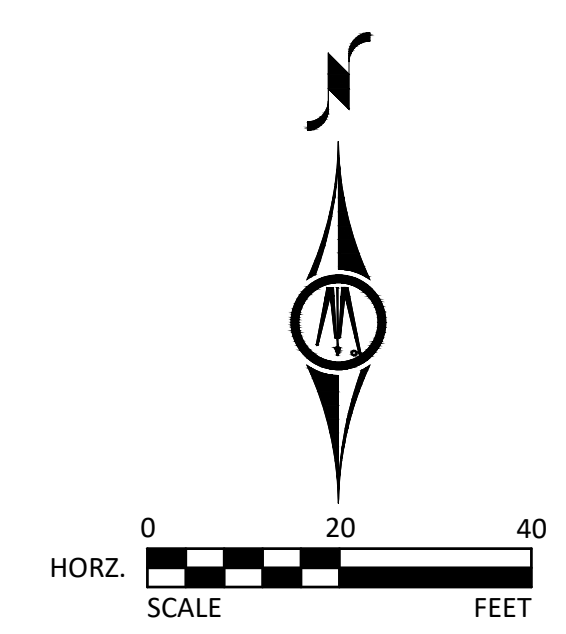
EXISTING

SITE STATISTICS

PROPERTY AREA = 15.71 ACRES
 EXISTING IMPERVIOUS AREA = 5.67 ACRES
 EXISTING PERVIOUS AREA = 10.04 ACRES
 DISTURBANCE AREA = 0.25 ACRES
 NEW AND FULLY RECONSTRUCTED IMPERVIOUS AREA = 0.19 ACRES
 SITE DISTURBANCE = 1.21%
 IMPERVIOUS SURFACE CHANGE = 0.01% DECREASE

LEGEND

 DRAINAGE PATTERN



PROPOSED

H:\WORLD - PR\2614261\000\CAD\CD\142611 - MISC_HYDR - 1/23/2026 5:47:55 PM