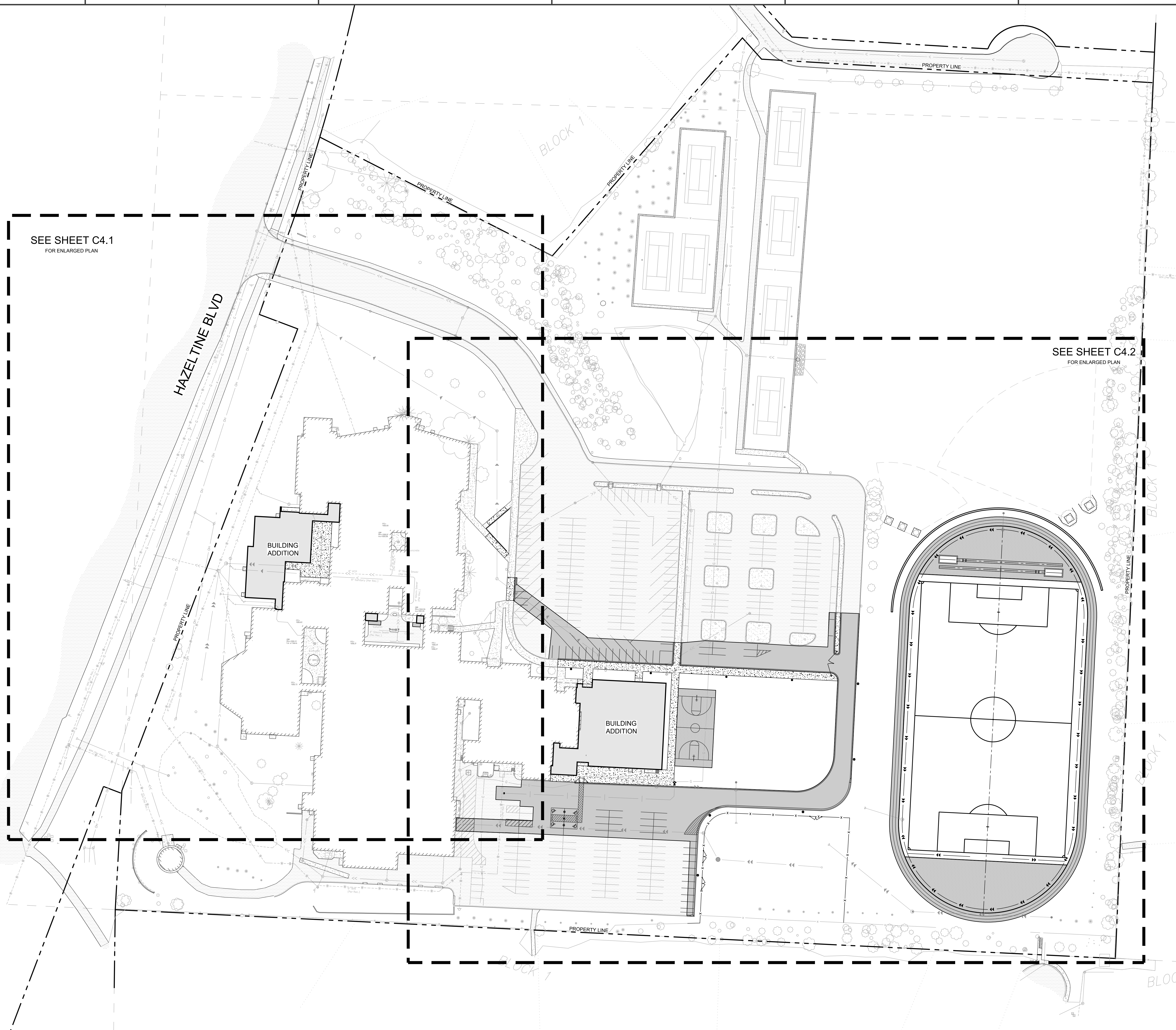
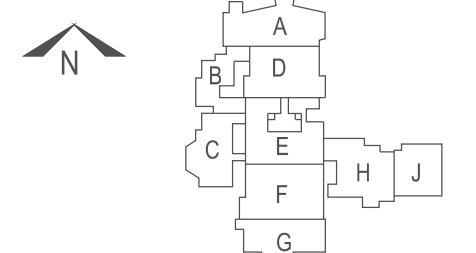




**Minnetonka Middle School West
Gym, Stage, and Science
Additions and Alterations**
Minnetonka Public Schools District 276
6421 Hazeltine Blvd
Excelsior, MN 55331

FOR REVIEW
ONLY

NOT FOR
CONSTRUCTION



SEE SHEET C4.1
FOR ENLARGED PLAN

SEE SHEET C4.2
FOR ENLARGED PLAN

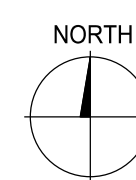
BUILDING
ADDITION

BUILDING
ADDITION

NORTH
1
C4.0
OVERALL SIGNAGE, STRIPING AND DIMENSION PLAN
1"=50'
0 50' 100' 150'

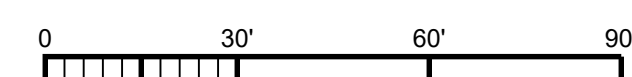
F:\03-Projects\2024-Projects\240743-ATSR-Minnetonka-MN\03-Production\01-Dwgs\01-Civil\MMW-Project\240743_C4.0_Signage-Striping-MMW.dwg 2/13/2026 10:45:56 AM

F:\03-Projects\2024-Projects\240743-AT&SR-Minnetonka-MN\03-Production\01-Dwgs\01-Civil\MMW\Project\240743_C4.0_Signage-Striping-MMW.dwg 2/13/2026 10:44:18 AM

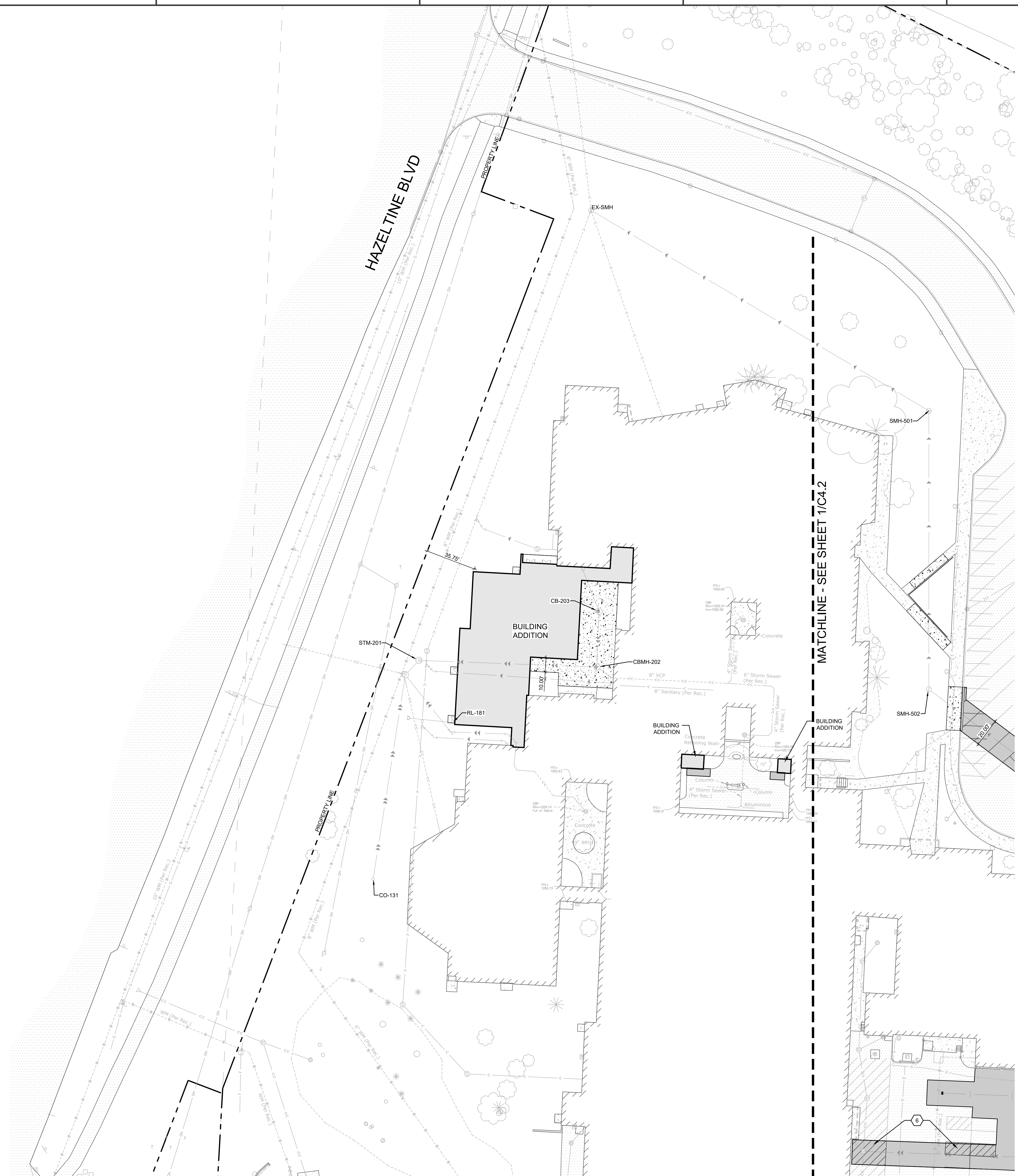


1
C4.1

SIGNAGE, STRIPING AND DIMENSION PLAN



1"=30'



LEGEND

	PROPOSED STORM SEWER
	PROPOSED SANITARY SEWER
	PROPOSED WATERMAIN
	PROPOSED FENCE
	PROPOSED FES
	PROPOSED STORM MANHOLE/ CATCH BASIN
	PROPOSED SANITARY MANHOLE
	PROPOSED WATER VALVE/ HYDRANT
	PROPOSED SIGN
	PROPOSED CONCRETE PAVEMENT
	PROPOSED HEAVY DUTY BITUMINOUS PAVEMENT
	PROPOSED LIGHT DUTY BITUMINOUS PAVEMENT
	EXISTING PROPERTY LINE
	EXISTING OVERHEAD UTILITY LINE
	EXISTING ELECTRIC LINE
	EXISTING WATER LINE
	EXISTING GAS LINE
	EXISTING STORM SEWER
	EXISTING SANITARY SEWER
	EXISTING FENCE
	EXISTING UTILITY VAULT
	EXISTING LIGHT POLE
	EXISTING TRANSFORMER
	EXISTING FIRE HYDRANT
	EXISTING VALVE
	EXISTING GAS METER
	EXISTING SANITARY MANHOLE
	EXISTING CATCHBASIN
	EXISTING STORM MANHOLE
	EXISTING ROOFDRAIN
	EXISTING POST
	EXISTING SIGN
	EXISTING TREE
	EXISTING BITUMINOUS PAVEMENT
	EXISTING CONCRETE PAVEMENT

- ### KEY NOTES
- STANDARD PARKING STALLS - SEE DETAIL PVMT-85/C7.1
 - ACCESSIBLE PARKING STALLS - SEE DETAIL PVMT-87/C7.1
 - NO PARKING / ACCESSIBLE ROUTE STRIPING - SEE DETAIL PVMT-83/C7.1
 - 4' SINGLE LINE HIGHWAY GRADE WHITE PAVEMENT MARKING
 - NON-SKID PAINTED 2" WHITE BASKETBALL COURT MARKINGS AND LINES
 - RESTRIPE - MATCH EXISTING PAVEMENT MARKING DESIGN CONTRACTOR TO TAKE NOTE OF EXISTING LAYOUT PRIOR TO REMOVAL
 - NON-SKID PAINTED 2" WHITE TRACK AND FIELD LINES
 - SOCCER FIELD SYNTHETIC TURF PAINT. SEE SPECIFICATIONS

- ### SITE SIGNAGE KEY NOTES
- BOLLARD MOUNTED SIGN - SEE DETAIL SIGN-03/C7.1
 - PROPOSED SIGN POST W/ SIGN(S) - SEE DETAIL SIGN-02/C7.1

- ### SIGN LEGEND
- ACCESSIBLE PARKING W/ VAN ACCESSIBLE - SEE DETAIL SIGN-01/C7.1

AT&SR
 ARCHITECTURE ENGINEERING
 PLANNING TECHNOLOGY
 INTERIOR DESIGN LANDSCAPE ARCHITECTURE

8501 GOLDEN VALLEY ROAD
 SUITE 300
 MINNEAPOLIS, MINNESOTA 55427

TEL: 763.545.3731
 FAX: 763.525.3289
 WEB: www.at&sr.com

Armstrong, Torseth, Skold & Rydberg, Inc. 2026
 CONSULTANTS



REVISIONS

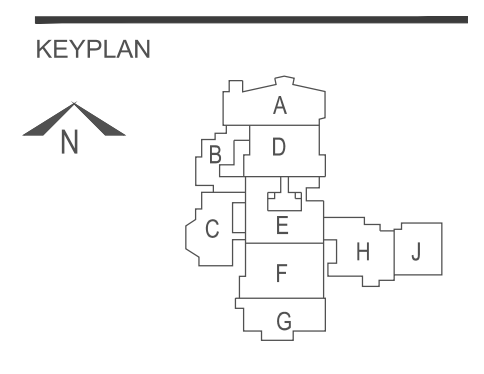
Minnetonka Middle School West
 Gym, Stage, and Science
 Additions and Alterations

Minnetonka Public Schools District 276
 6421 Hazeltine Blvd
 Excelsior, MN 55331

SIGNATURE / SEAL

FOR REVIEW ONLY

NOT FOR CONSTRUCTION



DRAWN BY
RCQ

CHECKED BY
ARL

ISSUED FOR
CITY SUBMITTAL

ISSUE DATE
FEB 13, 2026

SHEET NAME

SIGNAGE, STRIPING
 AND DIMENSION PLAN

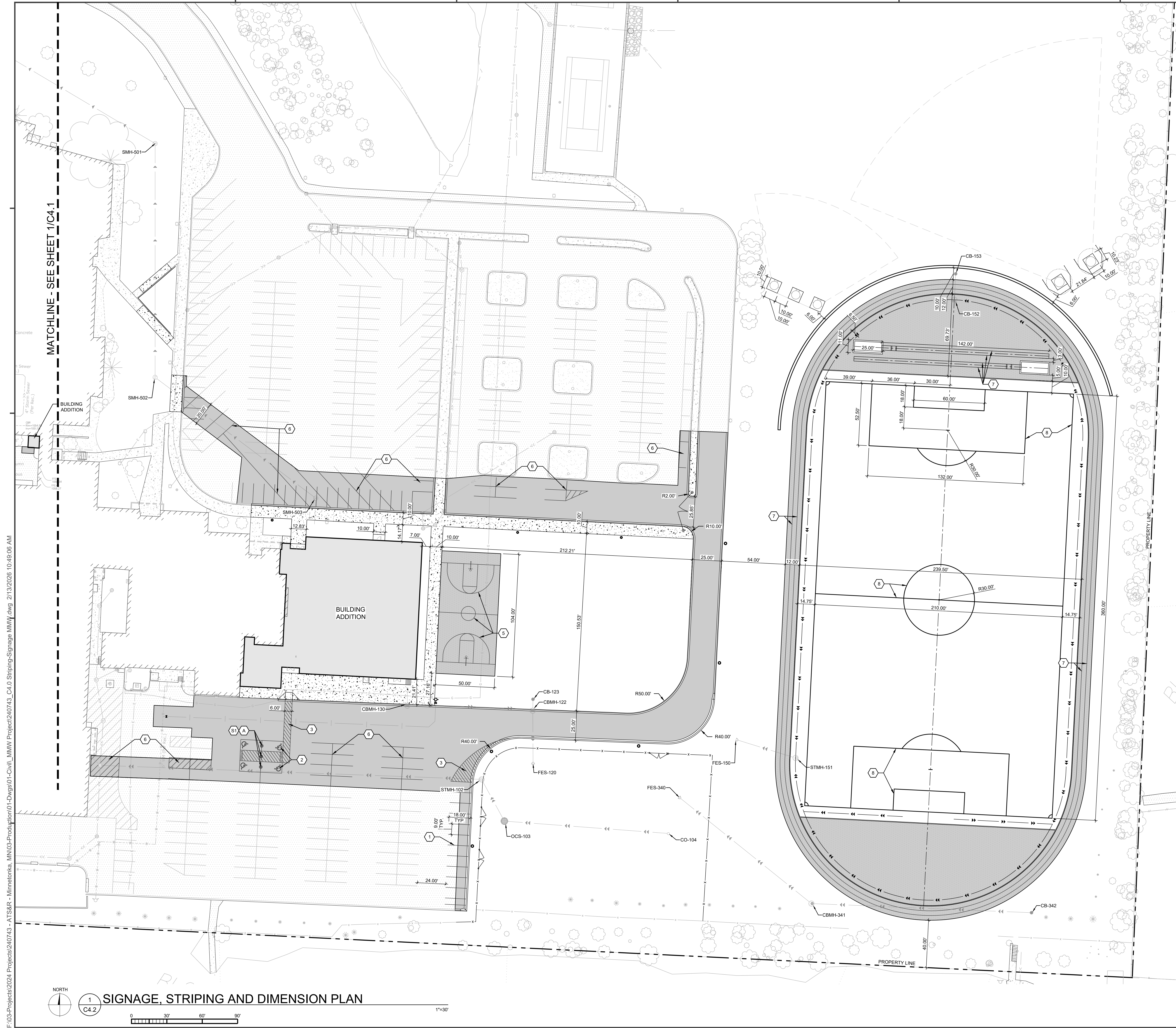
AT&SR PROJECT NO.
25061

REVISION NO.

SHEET NUMBER

C4.1

F:\03-Projects\2024-Projects\240743-ATSR-Minnetonka-MN\03-Production\01-Dwg\01-Civil\MMW\Project\240743_C4.0_Signage-Striping-MMW.dwg 2/13/2026 10:49:06 AM



LEGEND

	PROPOSED STORM SEWER
	PROPOSED SANITARY SEWER
	PROPOSED WATERMAIN
	PROPOSED FENCE
	PROPOSED FES
	PROPOSED STORM MANHOLE/ CATCH BASIN
	PROPOSED SANITARY MANHOLE
	PROPOSED WATER VALVE/ HYDRANT
	PROPOSED SIGN
	PROPOSED CONCRETE PAVEMENT
	PROPOSED HEAVY DUTY BITUMINOUS PAVEMENT
	PROPOSED LIGHT DUTY BITUMINOUS PAVEMENT
	EXISTING PROPERTY LINE
	EXISTING OVERHEAD UTILITY LINE
	EXISTING ELECTRIC LINE
	EXISTING WATER LINE
	EXISTING GAS LINE
	EXISTING STORM SEWER
	EXISTING SANITARY SEWER
	EXISTING FENCE
	EXISTING UTILITY VAULT
	EXISTING LIGHT POLE
	EXISTING TRANSFORMER
	EXISTING FIRE HYDRANT
	EXISTING VALVE
	EXISTING GAS METER
	EXISTING SANITARY MANHOLE
	EXISTING CATCHBASIN
	EXISTING STORM MANHOLE
	EXISTING ROOFDRAIN
	EXISTING POST
	EXISTING SIGN
	EXISTING TREE
	EXISTING BITUMINOUS PAVEMENT
	EXISTING CONCRETE PAVEMENT

- KEY NOTES**
- STANDARD PARKING STALLS - SEE DETAIL PVMT-85/C7.1
 - ACCESSIBLE PARKING STALLS - SEE DETAIL PVMT-87/C7.1
 - NO PARKING / ACCESSIBLE ROUTE STRIPING - SEE DETAIL PVMT-83/C7.1
 - 4' SINGLE LINE HIGHWAY GRADE WHITE PAVEMENT MARKING
 - NON-SKID PAINTED 2" WHITE BASKETBALL COURT MARKINGS AND LINES
 - RESTRIPE - MATCH EXISTING PAVEMENT MARKING DESIGN CONTRACTOR TO TAKE NOTE OF EXISTING LAYOUT PRIOR TO REMOVAL
 - NON-SKID PAINTED 2" WHITE TRACK AND FIELD LINES
 - SOCCER FIELD SYNTHETIC TURF PAINT. SEE SPECIFICATIONS

- SITE SIGNAGE KEY NOTES**
- BOLLARD MOUNTED SIGN - SEE DETAIL SIGN-03/C7.1
 - PROPOSED SIGN POST W/ SIGN(S) - SEE DETAIL SIGN-02/C7.1

- SIGN LEGEND**
- ACCESSIBLE PARKING W/ VAN ACCESSIBLE - SEE DETAIL SIGN-01/C7.1

ATSR
 ARCHITECTURE ENGINEERING
 PLANNING TECHNOLOGY
 INTERIOR DESIGN LANDSCAPE ARCHITECTURE

8501 GOLDEN VALLEY ROAD
 SUITE 300
 MINNEAPOLIS, MINNESOTA 55427

TEL: 763.545.3731
 FAX: 763.525.3289
 WEB: www.atsr.com

Armstrong, Torseth, Skold & Hyden, Inc. 2026
 CONSULTANTS



VAA, LLC 763.559.9100
 2300 Benetech Lane N, Suite 200 www.vaaing.com
 Plymouth, MN 55441 Project # 240743

REVISIONS

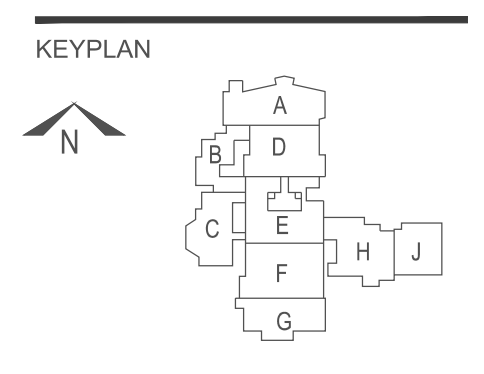
**Minnetonka Middle School West
 Gym, Stage, and Science
 Additions and Alterations**

**Minnetonka Public Schools District 276
 6421 Hazeltine Blvd
 Excelsior, MN 55331**

SIGNATURE / SEAL

FOR REVIEW ONLY

NOT FOR CONSTRUCTION



DRAWN BY
 RCQ

CHECKED BY
 ARL

ISSUED FOR
 CITY SUBMITTAL

ISSUE DATE
 FEB 13, 2026

SHEET NAME

SIGNAGE, STRIPING AND DIMENSION PLAN

ATS&R PROJECT NO.
 25061

REVISION NO.

SHEET NUMBER

C4.2

SIGNAGE, STRIPING AND DIMENSION PLAN

1
 C4.2

1"=30'

0 30' 60' 90'

F:\03-Projects\2024-Projects\240743-ATSR-Minnetonka-MN\03-Production\01-Dwg\01-Civil_MMW\Project\240743_C5.0_Grading_MMW.dwg 2/13/2026 10:47:06 AM

REVISIONS

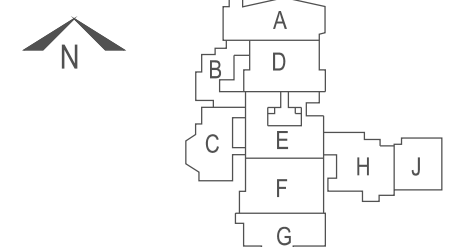
Minnetonka Middle School West
Gym, Stage, and Science
Additions and Alterations
Minnetonka Public Schools District 276
6421 Hazeltine Blvd
Excelsior, MN 55331

SIGNATURE / SEAL

FOR REVIEW ONLY

NOT FOR CONSTRUCTION

KEY PLAN



DRAWN BY

RCQ

CHECKED BY

ARL

ISSUED FOR

CITY SUBMITTAL

ISSUE DATE

FEB 13, 2026

SHEET NAME

OVERALL

GRADING AND

DRAINAGE PLAN

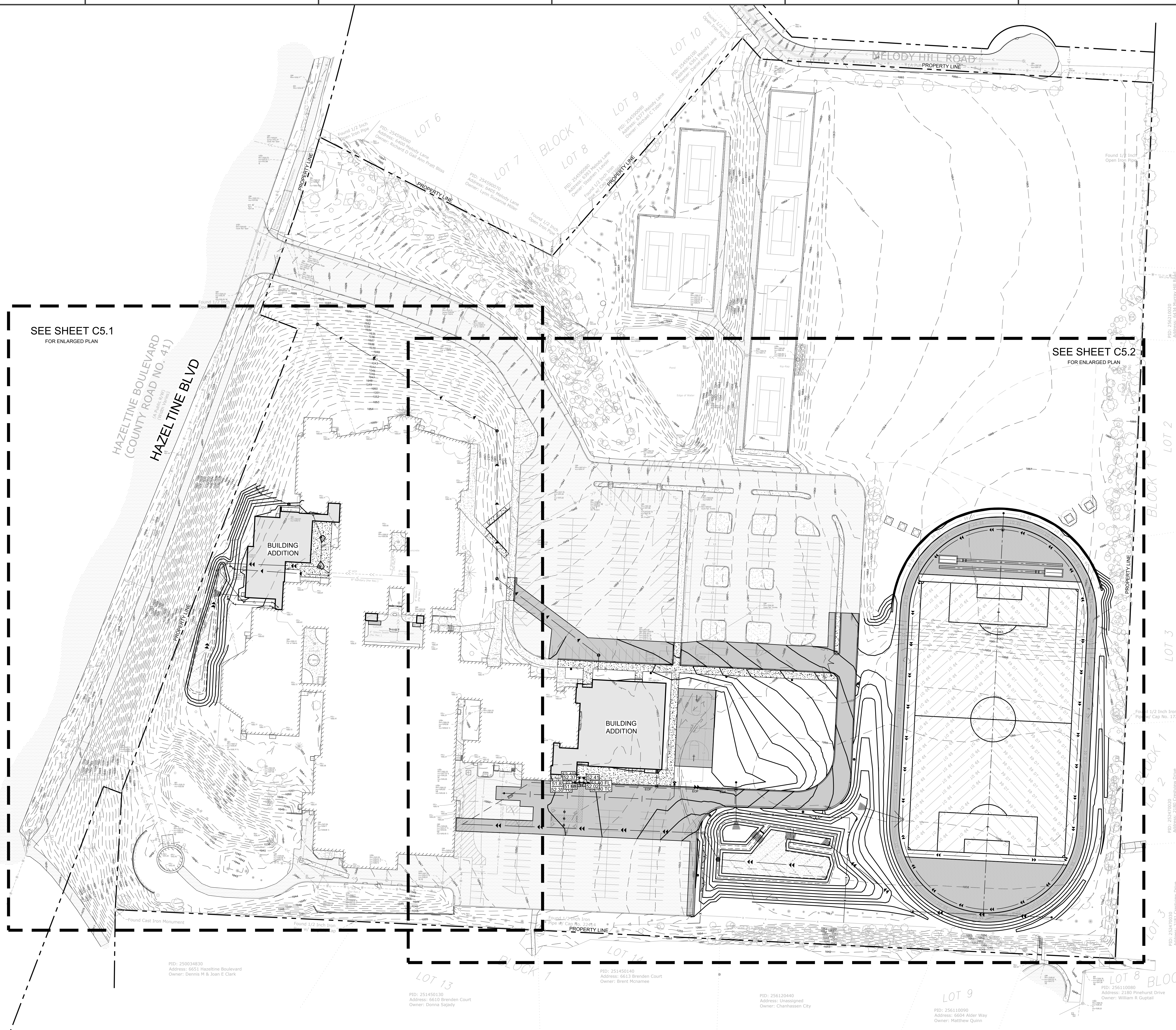
ATS&R PROJECT NO.

25061

REVISION NO.

SHEET NUMBER

C5.0



SEE SHEET C5.1
FOR ENLARGED PLAN

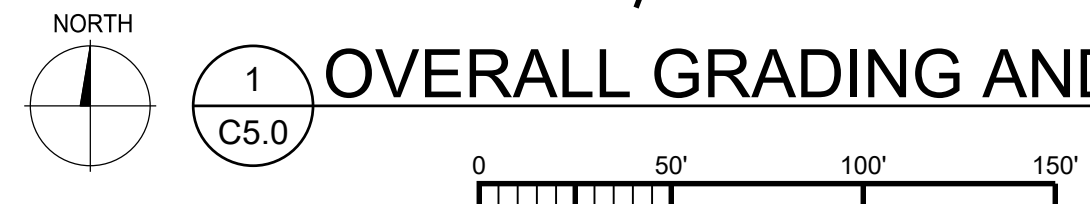
SEE SHEET C5.2
FOR ENLARGED PLAN

HAZELTINE BOULEVARD
(COUNTY ROAD NO. 41)
HAZELTINE BLVD

MELODY HILL ROAD

BUILDING ADDITION

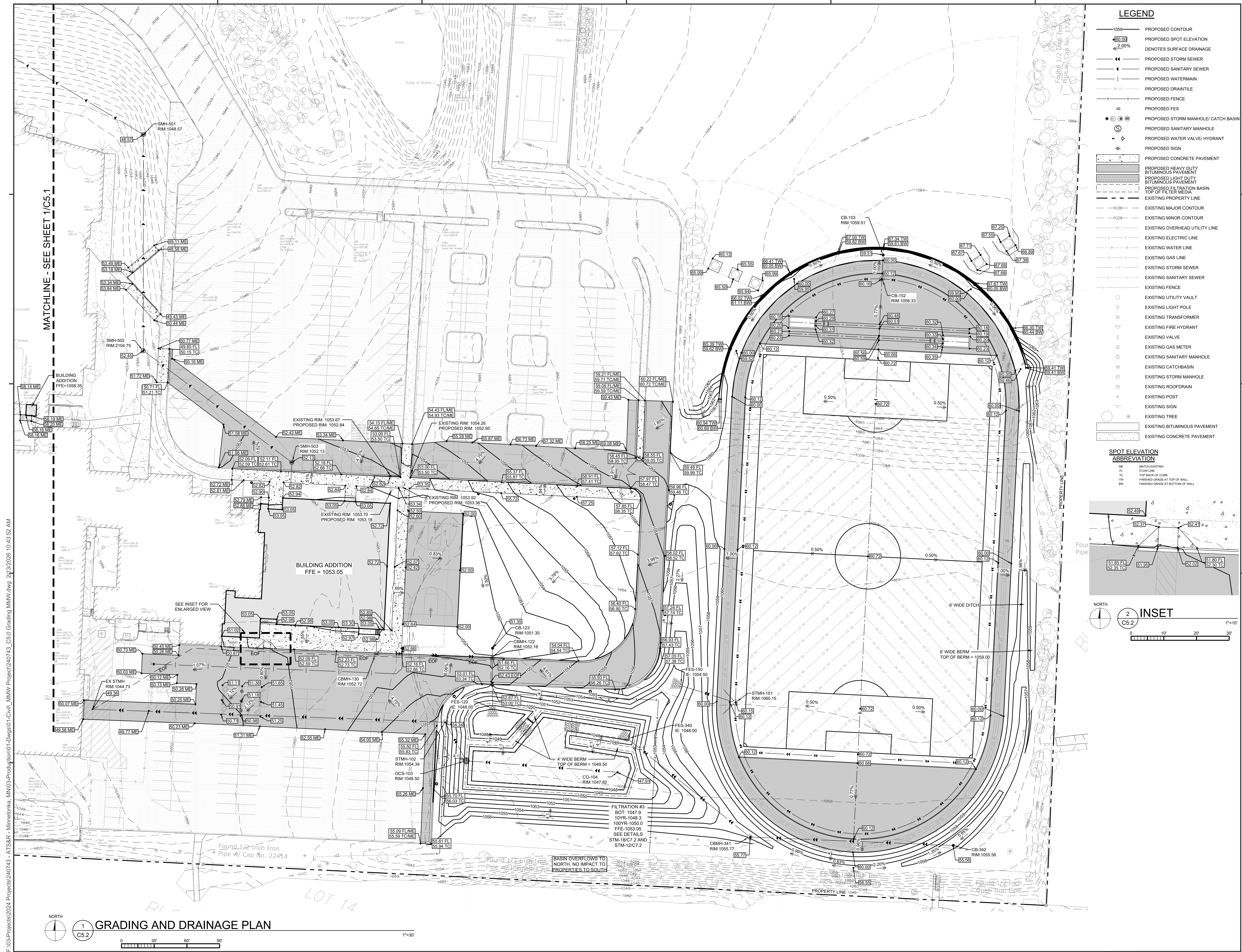
BUILDING ADDITION



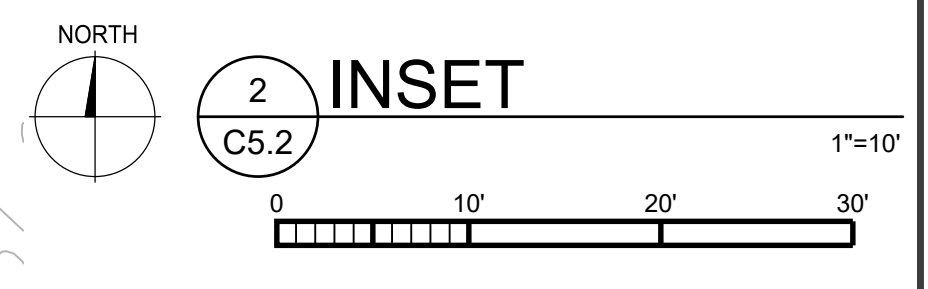
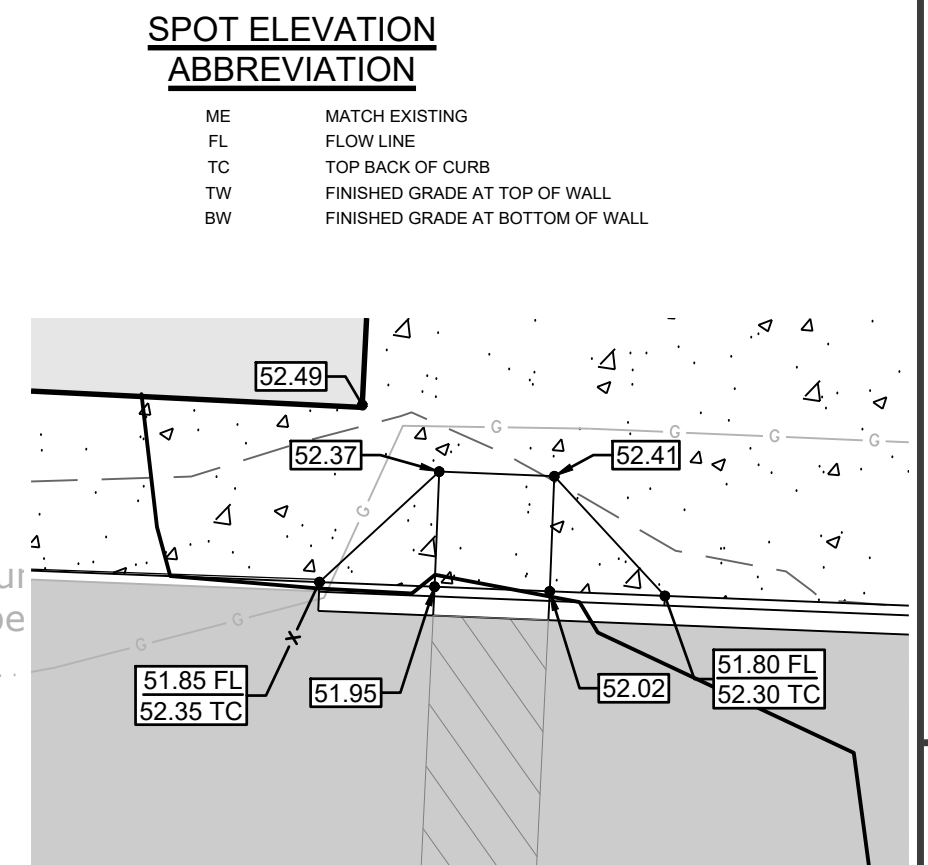
OVERALL GRADING AND DRAINAGE PLAN

1"=50'

F:\03-Projects\2024-Projects\240743-ATSR-Minnetonka-MN\03-Production\01-Dwg\01-Civil_MMW\Project240743_C5.0 Grading_MMW.dwg 2/13/2026 10:43:52 AM



- LEGEND**
- 1059 PROPOSED CONTOUR
 - 60.03 PROPOSED SPOT ELEVATION
 - 2.00% DENOTES SURFACE DRAINAGE
 - PROPOSED STORM SEWER
 - PROPOSED SANITARY SEWER
 - PROPOSED WATERMAIN
 - PROPOSED DRAIN TILE
 - PROPOSED FENCE
 - PROPOSED FES
 - PROPOSED STORM MANHOLE/ CATCH BASIN
 - PROPOSED SANITARY MANHOLE
 - PROPOSED WATER VALVE/ HYDRANT
 - PROPOSED SIGN
 - PROPOSED CONCRETE PAVEMENT
 - PROPOSED HEAVY DUTY BITUMINOUS PAVEMENT
 - PROPOSED LIGHT DUTY BITUMINOUS PAVEMENT
 - PROPOSED FILTRATION BASIN TOP OF FILTER MEDIA
 - EXISTING PROPERTY LINE
 - EXISTING MAJOR CONTOUR
 - EXISTING MINOR CONTOUR
 - EXISTING OVERHEAD UTILITY LINE
 - EXISTING ELECTRIC LINE
 - EXISTING WATER LINE
 - EXISTING GAS LINE
 - EXISTING STORM SEWER
 - EXISTING SANITARY SEWER
 - EXISTING FENCE
 - EXISTING UTILITY VAULT
 - EXISTING LIGHT POLE
 - EXISTING TRANSFORMER
 - EXISTING FIRE HYDRANT
 - EXISTING VALVE
 - EXISTING SANITARY MANHOLE
 - EXISTING CATCHBASIN
 - EXISTING STORM MANHOLE
 - EXISTING ROOFDRAIN
 - EXISTING POST
 - EXISTING SIGN
 - EXISTING TREE
 - EXISTING BITUMINOUS PAVEMENT
 - EXISTING CONCRETE PAVEMENT

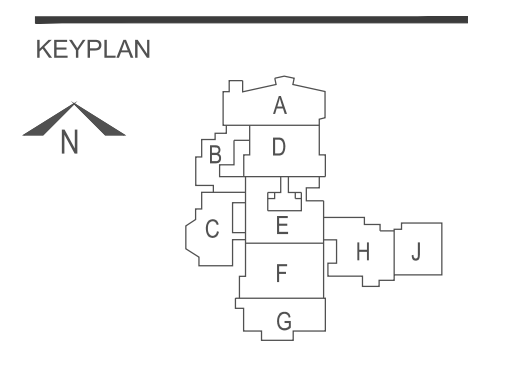


ATSR
 ARCHITECTURE ENGINEERING
 PLANNING TECHNOLOGY
 INTERIOR DESIGN LANDSCAPE ARCHITECTURE
 8501 GOLDEN VALLEY ROAD
 SUITE 300
 MINNEAPOLIS, MINNESOTA 55427
 TEL: 763.545.3731
 FAX: 763.525.3289
 WEB: www.atsr.com

VAA
 VAA, LLC
 2300 Benarive Lane N, Suite 200
 Plymouth, MN 55441
 763.589.0100
 www.vaaing.com
 Project # 240743

**Minnetonka Middle School West
 Gym, Stage, and Science
 Additions and Alterations**
 Minnetonka Public Schools District 276
 6421 Hazeltine Blvd
 Excelsior, MN 55331

SIGNATURE / SEAL
 FOR REVIEW ONLY
 NOT FOR CONSTRUCTION



DRAWN BY
 RCQ
 CHECKED BY
 ARL
 ISSUED FOR
 CITY SUBMITTAL
 ISSUE DATE
 FEB 13, 2026
 SHEET NAME

GRADING AND DRAINAGE PLAN
 ATSR PROJECT NO.
 25061
 REVISION NO.

SHEET NUMBER
C5.2

GRADING AND DRAINAGE PLAN
 1
 C5.2

F:\03-Projects\2024-Projects\240743-ATSR-ATSR-Minnetonka-MN\03-Production\01-Dwgs\01-Civil\MMW\Project240743_C6.0.Erosion.MMW.dwg 2/13/2026 10:45:57 AM

REVISIONS

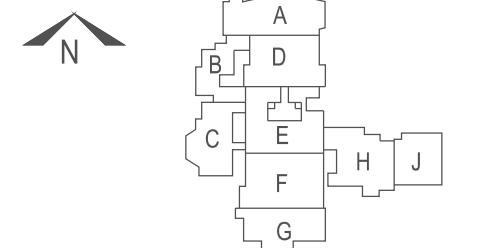
Minnetonka Middle School West
Gym, Stage, and Science
Additions and Alterations
Minnetonka Public Schools District 276
6421 Hazeltine Blvd
Excelsior, MN 55331

SIGNATURE / SEAL

FOR REVIEW
ONLY

NOT FOR
CONSTRUCTION

KEY PLAN



DRAWN BY
RCQ

CHECKED BY
ARL

ISSUED FOR
CITY SUBMITTAL

ISSUE DATE
FEB 13, 2026

SHEET NAME

EROSION AND SEDIMENT
CONTROL PLAN

AT&R PROJECT NO.
25061

REVISION NO.

SHEET NUMBER

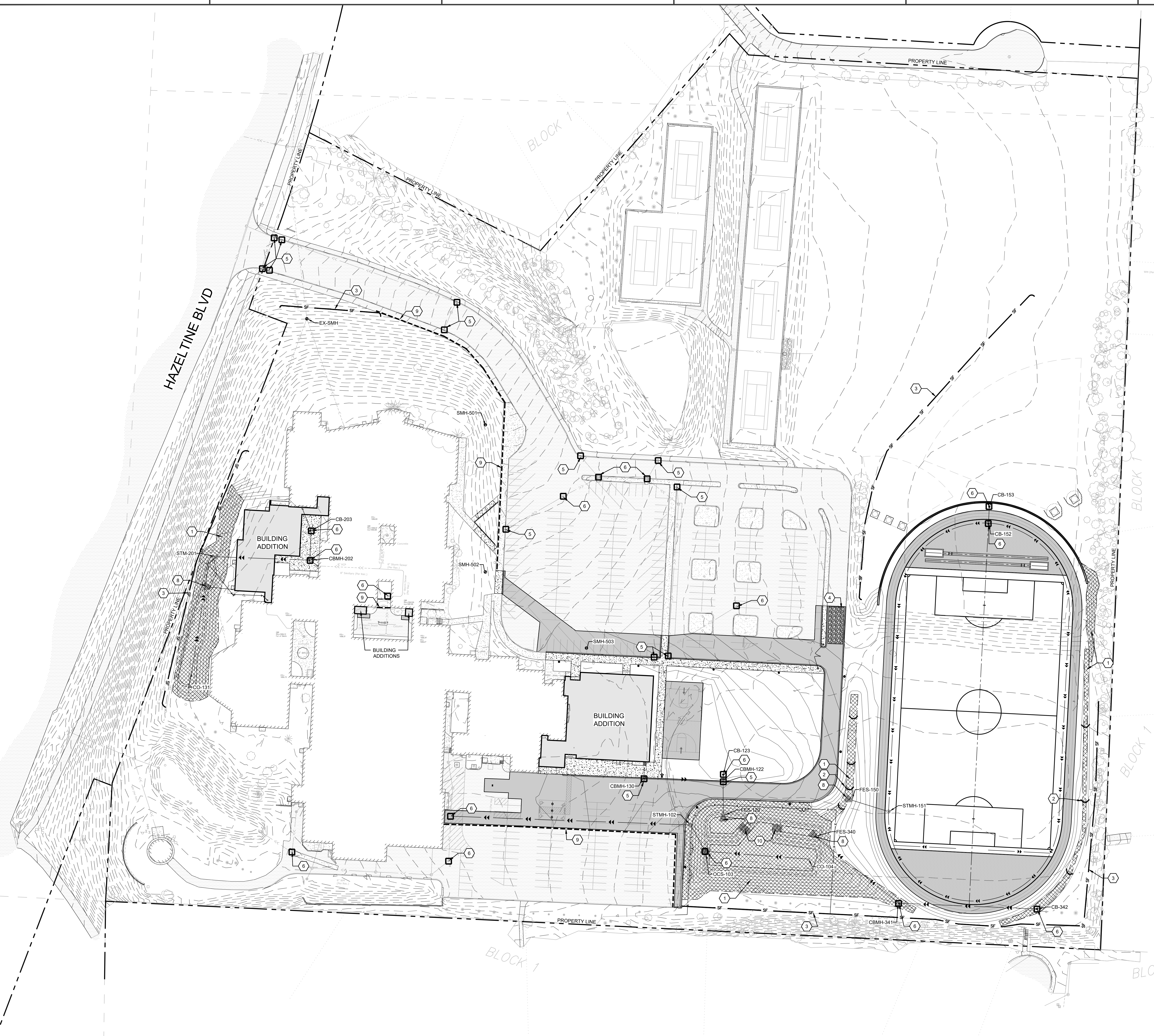
C6.0

LEGEND

- PROPOSED CONTOUR
- SF — PROPOSED SILT FENCE
- PROPOSED SEDIMENT CONTROL LOG
- PROPOSED SEDIMENT CONTROL AT MH/CB
- ⌋ PROPOSED BIOROLL
- ⌋ PROPOSED STORM SEWER
- PROPOSED FENCE
- PROPOSED FES
- PROPOSED STORM MANHOLE/ CATCH BASIN
- ⊙ PROPOSED SANITARY MANHOLE
- ⊙ PROPOSED WATER VALVE/ HYDRANT
- ⊙ PROPOSED SIGN
- ▨ PROPOSED EROSION CONTROL BLANKET
- ▨ PROPOSED CONCRETE PAVEMENT
- ▨ PROPOSED HEAVY DUTY BITUMINOUS PAVEMENT
- ▨ PROPOSED LIGHT DUTY BITUMINOUS PAVEMENT
- ▨ PROPOSED FILTRATION BASIN TOP OF FILTER MEDIA
- ▨ PROPOSED ROCK CONSTRUCTION ENTRANCE
- - - EXISTING PROPERTY LINE
- - - EXISTING MAJOR CONTOUR
- - - EXISTING MINOR CONTOUR
- - - EXISTING OVERHEAD UTILITY LINE
- - - EXISTING STORM SEWER
- - - EXISTING FENCE
- EXISTING UTILITY VAULT
- EXISTING LIGHT POLE
- EXISTING TRANSFORMER
- EXISTING FIRE HYDRANT
- EXISTING VALVE
- EXISTING GAS METER
- EXISTING SANITARY MANHOLE
- EXISTING CATCHBASIN
- EXISTING STORM MANHOLE
- EXISTING ROOFDRAIN
- EXISTING POST
- EXISTING SIGN
- EXISTING TREE
- ▨ EXISTING BITUMINOUS PAVEMENT
- ▨ EXISTING CONCRETE PAVEMENT

KEY NOTES

- 1 EROSION CONTROL BLANKET AND SEEDING - SEE DETAIL EC-01/C7.0
- 2 BIOROLL (TYP.) - SEE DETAIL EC-03/C7.0
- 3 SILT FENCE - SEE PLATE NO. 5300/C7.0
- 4 ROCK CONSTRUCTION ENTRANCE - SEE PLATE NO. 5301/C7.0
- 5 INLET PROTECTION AT CURB INLET - SEE PLATE NO. 5302A/C7.0
- 6 INLET PROTECTION AT CATCH BASIN - SEE PLATE NO. 5302G/C7.0
- 7 NOT USED
- 8 RIP RAP AT FES - SEE PLATE NO 3107/C7.0
- 9 SEDIMENT CONTROL LOG - SEE DETAIL EC-07/C7.0
- 10 STORMWATER TREATMENT DETAIL - SEE DETAIL STM-85/C7.2



1 EROSION AND SEDIMENT CONTROL PLAN
C6.0

