

CIVIL NOTES

REMOVAL NOTES

- ALL UTILITY DEMOLITION AND/OR ABANDONMENT TO BE PERFORMED IN ACCORDANCE WITH CITY OF CHANHASSEN AND STATE OF MINNESOTA REGULATIONS AND STANDARDS.
- EXISTING KNOWN UTILITIES ARE SHOWN IN THEIR APPROXIMATE LOCATIONS. CONTRACTOR TO FIELD VERIFY THE LOCATION OF ALL EXISTING PUBLIC AND PRIVATE UTILITIES WHICH MAY INCLUDE BUT IS NOT LIMITED TO: ELECTRIC, TELEPHONE, GAS, CABLE TV, COMPUTER CABLE, FIBER OPTIC CABLE, SANITARY SEWER, STORM SEWER AND WATERMAIN. CONTRACTOR TO CONTACT 811 BEFORE EXCAVATING.
- ALL ELECTRICAL POLE AND LIGHT REMOVAL SHALL BE COORDINATED WITH THE OWNER AND AUTHORITY HAVING JURISDICTION PRIOR TO DEMOLITION.

UTILITY NOTES

- ALL UTILITY DEMOLITION AND/OR ABANDONMENT TO BE PERFORMED IN ACCORDANCE WITH CITY OF CHANHASSEN AND STATE OF MINNESOTA REGULATIONS AND STANDARDS.
- EXISTING UTILITIES ARE SHOWN IN THEIR APPROXIMATE LOCATIONS. CONTRACTOR TO FIELD VERIFY THE LOCATION OF ALL EXISTING PUBLIC AND PRIVATE UTILITIES WHICH MAY INCLUDE BUT IS NOT LIMITED TO: ELECTRIC, TELEPHONE, GAS, CABLE TV, COMPUTER CABLE, FIBER OPTIC CABLE, SANITARY SEWER, STORM SEWER AND WATERMAIN. CONTRACTOR TO CONTACT 811 BEFORE EXCAVATING.
- PROVIDE THE FOLLOWING MINIMUM COVER OVER THE TOP OF PIPE AS FOLLOWS:
 - 7.5' OVER WATERMAIN
 - 7.5' OVER SANITARY SEWER
 - 1.5' OVER STORM SEWER

GRADING NOTES

- PROPOSED SPOT ELEVATIONS AND CONTOURS ARE TO TOP OF GRADE, PAVEMENT, OR GUTTER LINE, UNLESS OTHERWISE SPECIFIED.

EROSION AND SEDIMENT CONTROL NOTES

- PROVIDE PERMANENT SEEDING, SLOPE PROTECTION, AND FERTILIZING OF ALL DISTURBED AREAS OUTSIDE THE LIMITS OF PAVING PER LANDSCAPE ARCHITECTURE PLANS AND EROSION AND SEDIMENT CONTROL PLANS
- INSTALL PERIMETER AND SEDIMENT CONTROL ITEMS PRIOR TO CONSTRUCTION.
- REMOVE ALL SOILS AND SEDIMENTS TRACKED OR OTHERWISE DEPOSITED ONTO PUBLIC AND PRIVATE PAVEMENT AREAS. REMOVAL SHALL BE ON A DAILY BASIS THROUGHOUT THE DURATION OF THE CONSTRUCTION. CLEAN PAVED ROADWAYS BY SHOVELING OR SWEEPING. STREET WASHING IS ALLOWED ONLY AFTER SHOVELING OR SWEEPING HAS REMOVED SEDIMENT. SEE CITY OF CHANHASSEN STANDARDS AND REGULATIONS
- RESTORATION REQUIREMENTS ARE SHOWN AT A MINIMUM. ADDITIONAL RESTORATION MAY BE REQUIRED IF THERE IS ADDITIONAL SOIL DISTURBANCE.

GENERAL NOTES

- ALL EXISTING INFORMATION TAKEN FROM SURVEY BY CIVIL SITE GROUP PROJECT NUMBER 23189.02, DATED 11/11/2025. BACKGROUND SURVEY ON THESE DRAWINGS IS FOR REFERENCE ONLY. REFER TO CERTIFIED SURVEY AS THE BASIS FOR ALL PROJECT WORK
- SUBSURFACE GEOTECHNICAL INVESTIGATION BY BRAUN INTERTEC PROJECT NUMBER B2508902, DATED 1/27/2026.
- CONTRACTOR TO FIELD VERIFY ALL EXISTING CONDITIONS INCLUDING LOCATIONS OF EXISTING PUBLIC AND PRIVATE UTILITIES, AND NOTIFY ENGINEER OF ANY DISCREPANCIES PRIOR TO STARTING CONSTRUCTION
- ALL EXISTING UTILITIES AND OTHER IMPROVEMENTS ARE TO REMAIN UNLESS NOTED OTHERWISE
- CONTRACTOR TO KEEP FROM DAMAGE ALL EXISTING IMPROVEMENTS, LANDSCAPING, STRUCTURES AND UTILITIES THAT ARE TO REMAIN. CONTRACTOR TO REPAIR ANY DAMAGE AT OWN EXPENSE.
- ALL WORK TO CONFORM WITH CITY OF CHANHASSEN AND STATE OF MINNESOTA STANDARDS AND REGULATIONS
- ALL EXCAVATIONS MUST COMPLY WITH THE REQUIREMENTS OF OSHA 29 CFR, PART 1926, SUBPART P "EXCAVATIONS AND TRENCHES". THIS DOCUMENT STATES THAT EXCAVATION SAFETY IS THE SOLE RESPONSIBILITY OF THE CONTRACTOR.
- CATCHBASINS AND MANHOLES ARE SHOWN ON PLAN LARGER THAN ACTUAL SIZE. COORDINATE LOCATION OF MANHOLE COVER AND CASTING SO THAT IT IS PROPERLY LOCATED AT THE BACK OF CURBLINE FOR THE CURB INLETS OR CENTERED IN THE AREA AS SHOWN ON THE PLAN FOR THE AREA DRAINS AND MANHOLE COVERS.
- FLARED END SECTIONS (FES) ARE SHOWN ON PLAN LARGER THAN ACTUAL SIZE. ALL PIPE LENGTHS INCLUDE FES. CONTRACTOR/SURVEYOR TO STAKE THE END OF FES FOR LOCATION.
- PROVIDE TRAFFIC CONTROL AT STREETS AND SIDEWALKS PER CITY OF CHANHASSEN AND MUTCD REQUIREMENTS, AS REQUIRED. TRAFFIC CONTROL DESIGN, RELATED PERMITTING, AND DRAWINGS SHALL BE THE RESPONSIBILITY OF THE CONTRACTOR.
- ANY WORK PERFORMED OUTSIDE THE PROPERTY BOUNDARIES MUST BE APPROVED BY OWNER AND ALL REGULATING GOVERNMENT AGENCIES AND APPROPRIATE PERMITS MUST BE OBTAINED.
- CONTRACTOR'S SURVEYOR SHALL RESET PERMANENT MONUMENTS AT LOCATIONS OF ALL FOUND MONUMENTS THAT ARE DISTURBED BY CONSTRUCTION AT NO COST TO OWNER. CONTRACTOR'S SURVEYOR SHALL PREPARE A MONUMENT PRESERVATION CERTIFICATE IN ACCORDANCE WITH STATE LAW.

CONSTRUCTION ACTIVITY REQUIREMENTS

THE GENERAL STORMWATER NATIONAL POLLUTION DISCHARGE ELIMINATION SYSTEM (NPDES) PERMIT IS REQUIRED FOR STORM WATER DISCHARGES ASSOCIATED WITH CONSTRUCTION ACTIVITY. THE PERMITEE(S) AS INDICATED IN THE PERMIT, MUST IMPLEMENT THE STORMWATER POLLUTION PREVENTION PLAN (SWPPP) AS DEMONSTRATED HEREIN AND WITHIN THE SWPPP NARRATIVE. THE BEST MANAGEMENT PRACTICES (BMPs) IDENTIFIED MUST BE INSTALLED IN AN APPROPRIATE AND FUNCTIONAL WAY TO PREVENT DIRT AND/OR DEBRIS FROM ENTERING THE STORM SEWER OR BEING TRANSPORTED OFF SITE IN AN UNCONTROLLED MANNER.

FOR REQUIREMENTS ASSOCIATED WITH FISHWILDLIFE/RIVERS AND OTHER BODIES OF WATER, SEE MNDNR.

EROSION PREVENTION PRACTICES

- ALL EXPOSED SOIL MUST BE STABILIZED AS SOON AS POSSIBLE AND NO LATER THAN 7 DAYS AFTER THE CONSTRUCTION ACTIVITY IN THAT PORTION OF THE SITE WHERE WORK HAS TEMPORARILY OR PERMANENTLY CEASED. THESE AREAS INCLUDE, BUT ARE NOT LIMITED TO, CONSTRUCTED STORMWATER MANAGEMENT POND, SIDE SLOPES, AND ANY EXPOSED SOIL AREAS WITH A POSITIVE SLOPE TO STORMWATER CONVEYANCE SYSTEM, SUCH AS A CURB AND GUTTER SYSTEM, STORM SEWER INLET, TEMPORARY OR PERMANENT DRAINAGE DITCH OR OTHER NATURAL OR MANMADE SYSTEMS THAT DISCHARGE TO A SURFACE WATER.
- THE NORMAL WETTED PERIMETER OF ANY TEMPORARY OR PERMANENT DRAINAGE DITCH THAT DRAINS WATER FROM A CONSTRUCTION SITE, OR DIVERTS WATER AROUND A SITE, MUST BE STABILIZED WITHIN 200 LINEAL FEET FROM THE PROPERTY EDGE, OR FROM THE POINT OF DISCHARGE TO ANY SURFACE WATER. STABILIZATION MUST BE COMPLETED WITHIN 24 HOURS OF CONNECTING TO A SURFACE WATER.
- PIPE OUTLETS MUST BE PROVIDED WITH TEMPORARY OR PERMANENT ENERGY DISSIPATION WITHIN 24 HOURS OF CONNECTION TO A SURFACE WATER. CONTRACTOR TO PREVENT DIRT AND/OR DEBRIS FROM ENTERING STORM SEWER OR BEING TRANSPORTED OFF-SITE IN AN UNCONTROLLED MANNER. CONTRACTOR TO VERIFY AT PROJECT CLOSE-OUT THAT STORM SEWER SYSTEM IS CLEAR OF SEDIMENT AND/OR DEBRIS AND IS FULLY FUNCTIONAL. CONTRACTOR TO FOLLOW BEST MANAGEMENT PRACTICES (BMPs).
- ALL DISTURBED AREAS, EXCEPT ROADWAYS, BUILDING AREAS, PARKING AREAS, ISLANDS AND SIDEWALKS, SHALL BE RESTORED WITH MINIMUM 6 INCHES TOPSOIL, SEEDED AND MULCHED AS SOON AS POSSIBLE AND NO LATER THAN 7 DAYS OF COMPLETION OF SITE GRADING.
- IN ORDER TO MAINTAIN SHEET FLOW AND MINIMIZE HILLS AND/OR GULLIES, THERE SHALL BE NO UNBROKEN SLOPE LENGTH OF GREATER THAN 75 FEET FOR SLOPES WITH A GRADE OF 3:1 OR STEEPER.
- EROSION CONTROL BLANKET SHALL BE INSTALLED ON ALL 3:1 SLOPES AND STEEPER. DITCH BOTTOMS AND OTHER "HARD TO HOLD" AREAS AS SHOWN.

SEDIMENT CONTROL PRACTICES

- CONTRACTOR TO INSTALL SEDIMENT CONTROL ELEMENTS PRIOR TO START OF LAND DISTURBING ACTIVITIES. MAINTAIN IN GOOD CONDITION DURING CONSTRUCTION AND REMOVE FROM THE SITE UPON COMPLETION OF FINAL PAVING AND TURF ESTABLISHMENT. REMOVE FROM SITE UPON COMPLETION OF FINAL STABILIZATION. ALL SEDIMENT CONTROL ELEMENTS ARE TEMPORARY.
- TEMPORARY ROCK CONSTRUCTION ENTRANCE SHALL BE LOCATED AT ALL CONSTRUCTION ACCESS LOCATIONS. SEE PLATE NO. 5301C7.0.
- REMOVE ALL SOILS AND SEDIMENTS TRACKED OR OTHERWISE DEPOSITED ONTO PUBLIC AND PRIVATE PAVEMENT AREAS. REMOVAL SHALL BE ON A DAILY BASIS THROUGHOUT THE DURATION OF THE CONSTRUCTION. CLEAN PAVED ROADWAYS BY SHOVELING OR SWEEPING. STREET WASHING IS ALLOWED ONLY AFTER SHOVELING OR SWEEPING HAS REMOVED SEDIMENT.
- SEDIMENT CONTROL PRACTICES MUST DETER SEDIMENT FROM ENTERING SURFACE WATERS, INCLUDING CURB AND GUTTER SYSTEMS AND STORM SEWER INLETS SEE PLATE NO. 5302G/C7.0, AND 5302A/C7.0.
- TEMPORARY OR PERMANENT DRAINAGE DITCHES AND SEDIMENT BASINS THAT ARE DESIGNED AS PART OF A TREATMENT SYSTEM (E.G., DITCHES WITH ROCK CHECK DAMS) REQUIRE SEDIMENT CONTROL PRACTICES ONLY AS APPROPRIATE FOR SITE CONDITIONS.
- SEDIMENT CONTROL PRACTICES MUST BE ESTABLISHED ON ALL DOWN GRADIENT PERIMETERS BEFORE ANY UPGRADIENT LAND DISTURBING ACTIVITIES BEGIN. THESE PRACTICES SHALL REMAIN IN PLACE UNTIL FINAL STABILIZATION HAS BEEN ESTABLISHED.

SEDIMENT CONTROL PRACTICES CONTINUED

- IF THE DOWN GRADIENT TREATMENT SYSTEM IS OVERLOADED, ADDITIONAL UPGRADIENT SEDIMENT CONTROL PRACTICES MUST BE INSTALLED TO ELIMINATE THE OVERLOADING, AND THE SWPPP MUST BE AMENDED TO IDENTIFY THESE ADDITIONAL PRACTICES.
- THE TIMING OF THE INSTALLATION OF SEDIMENT CONTROL PRACTICES MAY BE ADJUSTED TO ACCOMMODATE SHORT-TERM ACTIVITIES SUCH AS CLEARING OR GRUBBING, OR PASSAGE OF VEHICLES. ANY SHORT-TERM ACTIVITY MUST BE COMPLETED AS QUICKLY AS POSSIBLE AND THE SEDIMENT CONTROL PRACTICES MUST BE INSTALLED IMMEDIATELY AFTER THE ACTIVITY IS COMPLETED. HOWEVER, SEDIMENT CONTROL PRACTICES MUST BE INSTALLED BEFORE THE NEXT PRECIPITATION EVENT EVEN IF THE ACTIVITY IS NOT COMPLETE.
- CONTRACTOR TO INSTALL AND MAINTAIN INLET PROTECTION AROUND ALL EXISTING CATCHBASINS, CATCHBASIN MANHOLES, AND FLARED END SECTIONS PRIOR TO THE START OF LAND DISTURBING ACTIVITIES AND AROUND ALL NEW CATCHBASINS, CATCHBASIN MANHOLES, AND FLARED END SECTIONS AFTER THEY ARE INSTALLED. UNTIL ALL SOURCES WITH POTENTIAL FOR DISCHARGING TO THE INLET HAVE BEEN STABILIZED, SEE PLATE NO. 5302F/C7.0, 5302G/C7.0, AND 5302A/C7.0.
- TEMPORARY SOIL STOCKPILES MUST HAVE SILT FENCE OR OTHER EFFECTIVE SEDIMENT CONTROLS, AND CANNOT BE PLACED IN SURFACE WATERS, INCLUDING STORM WATER CONVEYANCES SUCH AS CURB AND GUTTER SYSTEMS, OR CONDUITS AND DITCHES.
- STOCKPILE AREAS WHICH REMAIN INACTIVE FOR MORE THAN 7 DAYS SHALL BE SEEDED, MULCHED, AND SURROUNDED BY SILT FENCE.
- THE PERMITEE(S) MUST INSTALL TEMPORARY SEDIMENTATION BASINS AS REQUIRED PER THE AUTHORITY HAVING JURISDICTION. IT IS RECOMMENDED THAT THE TEMPORARY BASIN BE INSTALLED IN THE LOCATION OF THE PERMANENT BASIN. CONTRACTOR TO CLEAN OUT ALL SEDIMENT AND RETURN BASIN TO DESIGN CAPACITY PRIOR TO FINAL STABILIZATION.

DEWATERING AND BASIN DRAINING

- DEWATERING OR BASIN DRAINING (E.G. PUMPED DISCHARGES, TRENCH/DITCH CUTS FOR DRAINAGE) RELATED TO THE CONSTRUCTION ACTIVITY THAT MAY HAVE TURBID OR SEDIMENT LADEN DISCHARGE WATER MUST BE DISCHARGED TO A TEMPORARY OR PERMANENT SEDIMENTATION BASIN ON THE PROJECT SITE WHENEVER POSSIBLE. IF THE WATER CANNOT BE DISCHARGED TO A SEDIMENTATION BASIN PRIOR TO ENTERING THE SURFACE WATER, IT MUST BE TREATED WITH THE APPROPRIATE BMP, SUCH THAT THE DISCHARGE DOES NOT ADVERSELY AFFECT THE RECEIVING WATER OR DOWNSTREAM LANDOWNERS. THE PERMITEE(S) MUST ENSURE THAT DISCHARGE POINTS ARE ADEQUATELY PROTECTED FROM EROSION AND SCOUR. THE DISCHARGE MUST BE DISPERSED OVER NATURAL ROCK RIPRAP, SAND BAGS, PLASTIC SHEETING OR OTHER ACCEPTED ENERGY DISSIPATION MEASURES. ADEQUATE SEDIMENTATION CONTROL MEASURES ARE REQUIRED FOR DISCHARGE WATER THAT CONTAINS SUSPENDED SOLIDS.
- ALL WATER FROM DEWATERING OR BASIN DRAINING ACTIVITIES MUST BE DISCHARGED IN A MANNER THAT DOES NOT CAUSE NUISANCE CONDITIONS, EROSION IN RECEIVING CHANNELS OR ON DOWNSLOPE PROPERTIES, OR INUNDATION IN WETLANDS CAUSING SIGNIFICANT ADVERSE IMPACT TO THE WETLAND.
- ANY DEWATERING ACTIVITY SHALL BE APPROVED BY THE ENGINEER AND THE APPROPRIATE GOVERNING AGENCIES PRIOR TO CONSTRUCTION.

INSPECTIONS AND MAINTENANCE

INSPECTIONS AND MAINTENANCE ARE CONDUCTED BY THE SUPERVISOR/CONTRACTOR AND MUST CONFORM TO THE SWPPP NARRATIVE.

IMPLEMENTATION SCHEDULE

THE IMPLEMENTATION SCHEDULE MUST CONFORM TO THE SWPPP NARRATIVE.

TEMPORARY EROSION CONTROL PLAN

INSTALL SEDIMENT PONDS AT RATE OF 1800 CF OF DEAD STORAGE PER ACRE OF DISTURBED LAND. TEMPORARY SEDIMENT BASINS SHALL BE OPERATIONAL UNTIL PERMANENT COVER IS ESTABLISHED FOR THE ENTIRE DRAINAGE AREA OF THE TEMPORARY BASIN. TEMPORARY SEDIMENT BASINS MUST BE CONSTRUCTED AND MADE OPERATIONAL CONCURRENTLY WITH THE START OF SOIL DISTURBANCE THAT IS UPGRADIENT OF THE AREA AND CONTRIBUTES RUNOFF TO THE POND.

	BEFORE CONSTRUCTION	AFTER CONSTRUCTION
TOTAL PROJECT AREA	30.74 AC	30.74 AC
DISTURBED AREA	NA	8.20 AC
TOTAL ESTIMATED IMPERVIOUS	11.13 AC	14.06 AC
TOTAL ESTIMATED PERVIOUS	19.62 AC	16.68 AC
RUNOFF COEFFICIENT OR CN VALUE	85.9	87.7

BMP	ESTIMATED QUANTITIES OF BMP'S	UNITS
SILT FENCE	1,860	LF
OUTLET PROTECTION WITH RIP RAP	32	CY
SEDIMENT CONTROL LOG	650	LF
HYDRO-SEED	SEE LANDSCAPING	ACRES
MULCH	SEE LANDSCAPING	ACRES
CONSTRUCTION ENTRANCE	1	EA
EROSION CONTROL BLANKET	4,845	SY

SWPPP CONTACT INFORMATION:

OWNER: MINNETONKA PUBLIC SCHOOLS DISTRICT 276

PROJECT SITE MANAGER: T.B.D.

CONTRACTOR: T.B.D.

THE SITE CONTRACTOR IS THE PARTY RESPONSIBLE TO OVERSEE THE IMPLEMENTATION OF THE SWPPP AND INSTALLATION, INSPECTION, AND MAINTENANCE OF THE EROSION PREVENTION AND SEDIMENT CONTROL BMPs BEFORE, DURING, AND AFTER CONSTRUCTION UNTIL FINAL STABILIZATION HAS BEEN ESTABLISHED AND THE "NOTICE OF TERMINATION" IS SUBMITTED. SEE THE GENERAL STORMWATER PERMIT FROM THE AUTHORITY HAVING JURISDICTION FOR REGULATIONS.

CONSTRUCTION DATES:

ESTIMATED PROJECT START DATE: 07/2026
ESTIMATED PROJECT COMPLETION DATE: 12/2027

ALL INFORMATION WITHIN THE PLAN SET AND SPECIFICATIONS IS TO BE USED IN ACCORDANCE WITH THE SWPPP NARRATIVE AND THE LATEST CONSTRUCTION DOCUMENTS.



REVISIONS

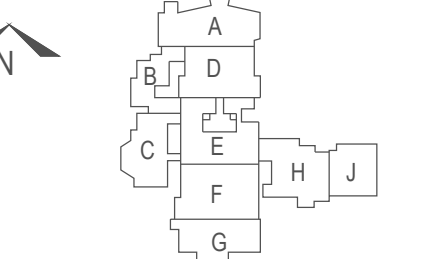
Minnetonka Middle School West
Gym, Stage, and Science
Additions and Alterations
Minnetonka Public Schools District 276
6421 Hazeltine Blvd
Excelsior, MN 55331

SIGNATURE / SEAL

FOR REVIEW ONLY

NOT FOR CONSTRUCTION

KEYPLAN



DRAWN BY

RCQ

CHECKED BY

ARL

ISSUED FOR

CITY SUBMITTAL

ISSUE DATE

FEB 13, 2026

SHEET NAME

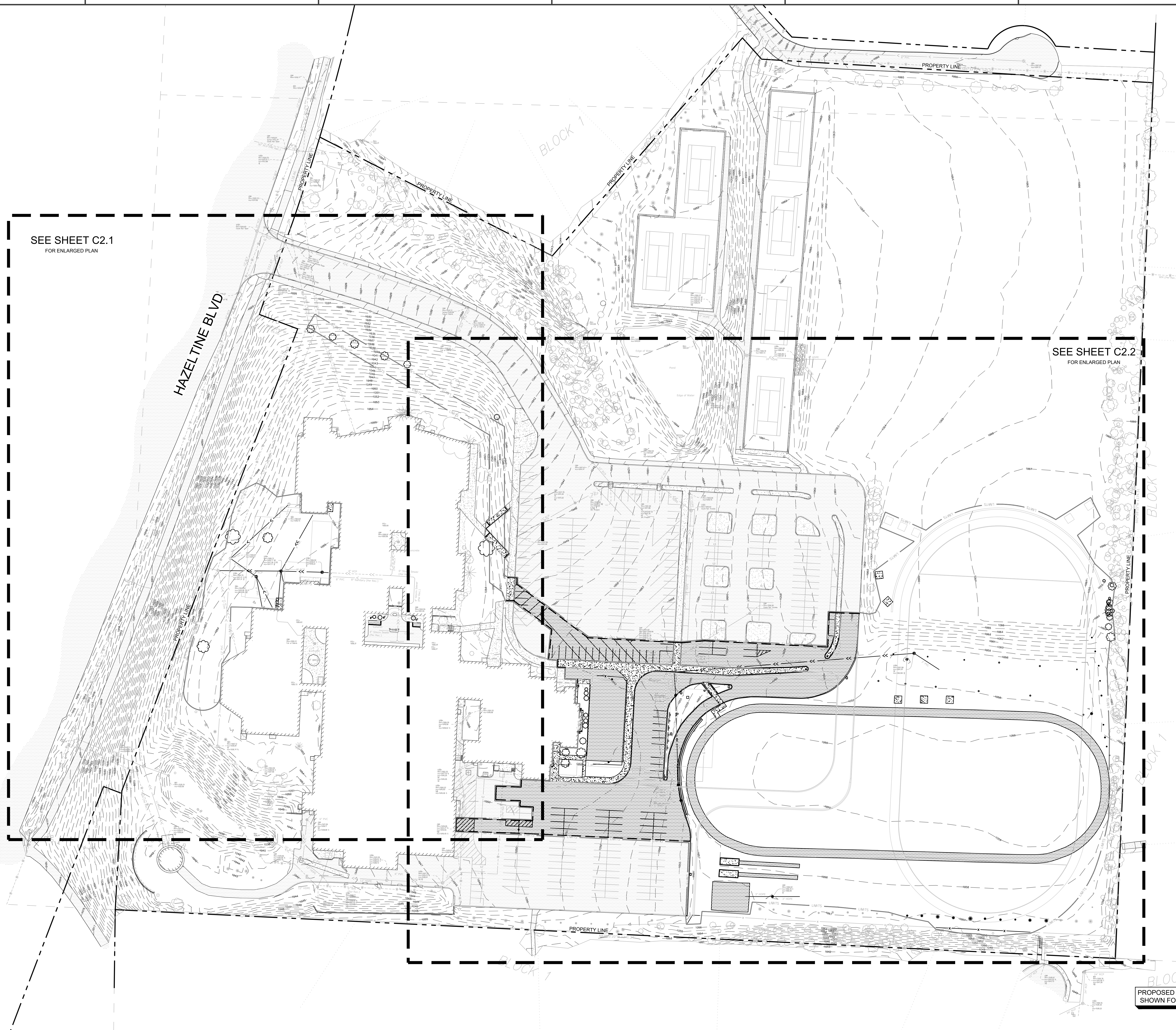
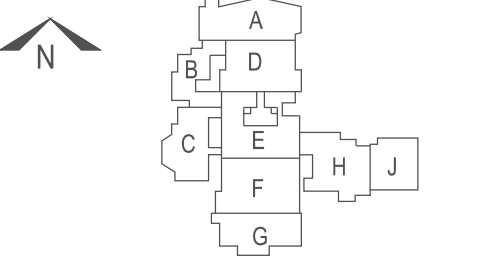
STORMWATER POLLUTION PREVENTION PLAN (SWPPP) / CIVIL NOTES

ATS&R PROJECT NO.

25061

REVISION NO.

SHEET NUMBER



SEE SHEET C2.1
FOR ENLARGED PLAN

SEE SHEET C2.2
FOR ENLARGED PLAN

HAZELTINE BLVD

BLOCK 1

BLOCK 1

BLOCK 1

BLOCK 1

PROPOSED IMPROVEMENTS ARE
SHOWN FOR REFERENCE ONLY



F:\03-Projects\2024-Projects\240743-ATSR-Minnetonka-MN\03-Production\01-Dwgs\01-Civil\MMW-Project\240743_C2.0.Demo\MMW.dwg 2/13/2026 10:45:21 AM

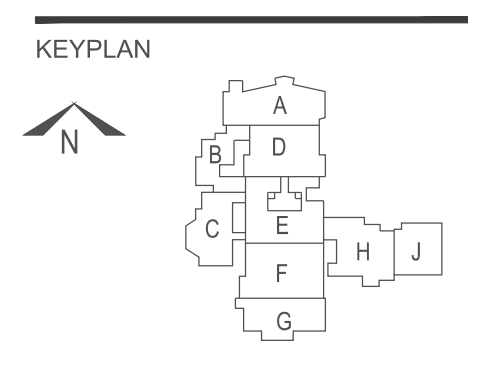
REVISIONS

Minnetonka Middle School West
Gym, Stage, and Science
Additions and Alterations
Minnetonka Public Schools District 276
6421 Hazeltine Blvd
Excelsior, MN 55331

SIGNATURE / SEAL

FOR REVIEW ONLY

NOT FOR CONSTRUCTION



DRAWN BY
RCQ
CHECKED BY
ARL
ISSUED FOR
CITY SUBMITTAL

ISSUE DATE
FEB 13, 2026
SHEET NAME

EXISTING CONDITIONS
AND REMOVALS PLAN

ATS&R PROJECT NO.
25061

REVISION NO.

SHEET NUMBER

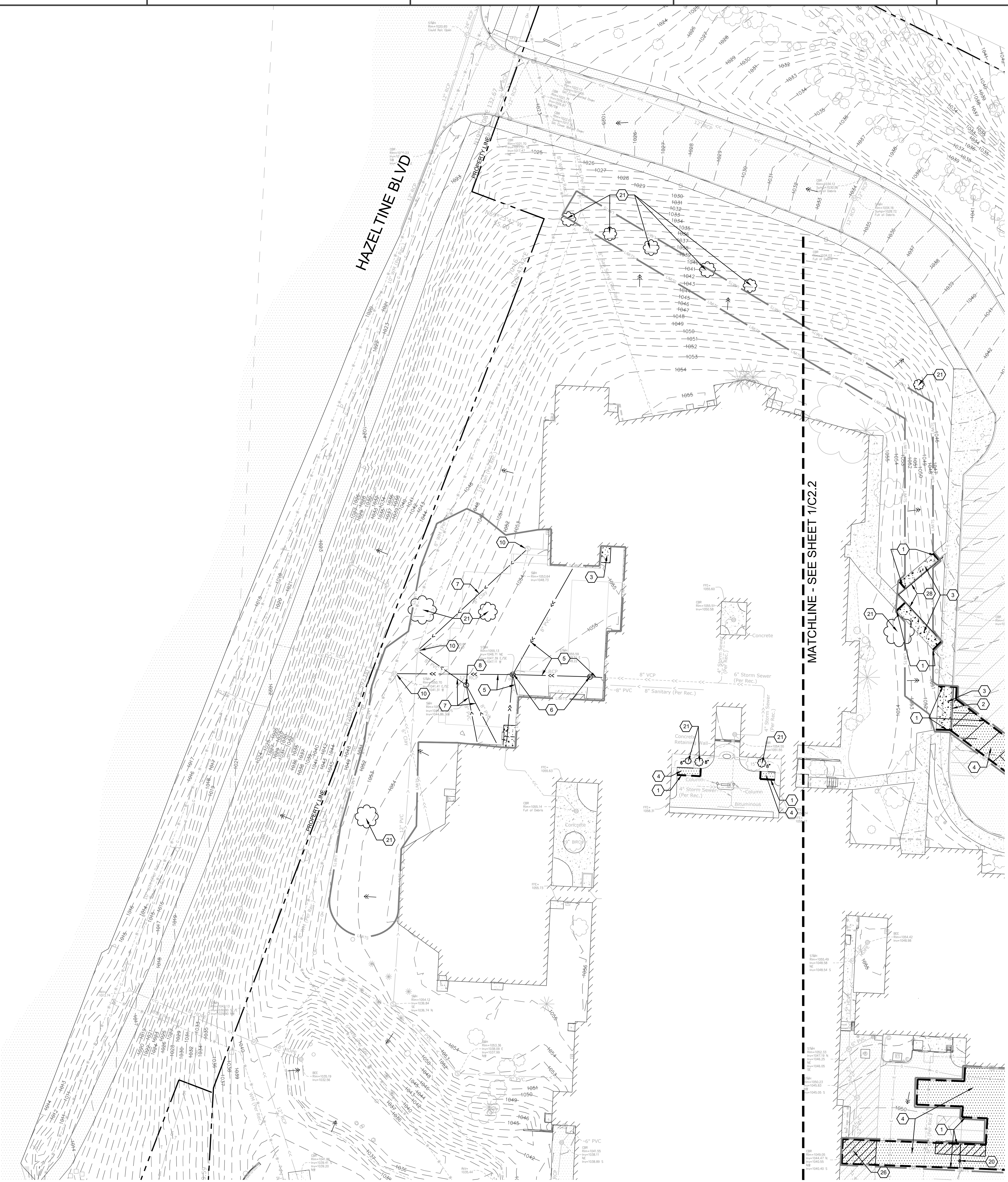
LEGEND

- PROPOSED SAWCUT LINE
- [Pattern] BITUMINOUS PAVEMENT TO BE REMOVED
- [Pattern] CONCRETE PAVEMENT TO BE REMOVED
- EXISTING PROPERTY LINE
- ← DENOTES SURFACE DRAINAGE
- EXISTING MAJOR CONTOUR
- EXISTING MINOR CONTOUR
- LIMITS OF CONSTRUCTION
- EXISTING OVERHEAD UTILITY LINE
- EXISTING ELECTRIC LINE
- EXISTING WATER LINE
- EXISTING GAS LINE
- EXISTING STORM SEWER
- EXISTING SANITARY SEWER
- EXISTING FENCE
- EXISTING UTILITY VAULT
- EXISTING LIGHT POLE
- EXISTING TRANSFORMER
- EXISTING FIRE HYDRANT
- EXISTING VALVE
- EXISTING GAS METER
- EXISTING SANITARY MANHOLE
- EXISTING CATCHBASIN
- EXISTING STORM MANHOLE
- EXISTING ROOF DRAIN
- EXISTING POST
- EXISTING SIGN
- EXISTING TREE
- [Pattern] EXISTING BITUMINOUS PAVEMENT
- [Pattern] EXISTING CONCRETE PAVEMENT

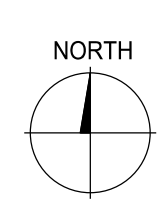
KEY NOTES

- 1 PROPOSED SAWCUT LINE. SAWCUT AT NEAREST JOINT AS APPLICABLE
- 2 REMOVE CURB AND GUTTER
- 3 REMOVE CONCRETE PAVEMENT
- 4 REMOVE BITUMINOUS PAVEMENT
- 5 REMOVE STORM SEWER
- 6 REMOVE STORM MANHOLE / CATCH BASIN
- 7 REMOVE SANITARY SEWER
- 8 REMOVE SANITARY MANHOLE
- 9 STORM MANHOLE / CATCH BASIN TO REMAIN. ADJUST RIM AS NECESSARY
- 10 BULKHEAD OPENING IN MANHOLE WHERE PIPE HAS BEEN REMOVED
- 11 REMOVE LIGHT POLE. COORDINATE WITH ELECTRICAL
- 12 REMOVE UTILITY VAULT. COORDINATE WITH ELECTRICAL
- 13 REMOVE GATE AND SALVAGE FOR REINSTALLATION
- 14 REMOVE AND DISPOSE OF SIGN POSTS AND CONCRETE FOOTING. SALVAGE SIGN PANEL FOR REINSTALLATION INTO PROJECT AS NECESSARY
- 15 TREE TO BE SPADE AND TRANSPLANTED
- 16 REMOVE COLUMN AND OVERHANG - SEE ARCHITECTURAL
- 17 REMOVE BASKETBALL HOOP POST AND CONCRETE FOOTINGS. SALVAGE HOOP, POST AND BACKBOARD FOR REINSTALLATION
- 18 REMOVE LONG JUMP / TRIPLE JUMP PIT
- 19 REMOVE EXISTING FENCE POSTS SET IN CONCRETE FOOTINGS. SALVAGE AIR-DRIVEN POSTS, ALL HORIZONTAL MEMBERS, FENCE FABRIC, AND GATE PANELS. SALVAGE MATERIALS FOR REINSTALLATION
- 20 REMOVE BOLLARD
- 21 REMOVE TREE. SEE L1.1 FOR COMPLETE TREE LIST
- 22 REMOVE WALL
- 23 REMOVE WATER SPIGOT
- 24 REMOVE ROOF DRAIN
- 25 REMOVE CLEANOUT AND DRAINTILE
- 26 CATCH BASIN/ STORM MANHOLE TO REMAIN
- 27 LIGHT POLE TO REMAIN
- 28 RAILING TO BE REMOVED AND SALVAGED FOR REINSTALLATION

PROPOSED IMPROVEMENTS ARE SHOWN FOR REFERENCE ONLY



1 C2.1 EXISTING CONDITIONS AND REMOVALS PLAN



REVISIONS

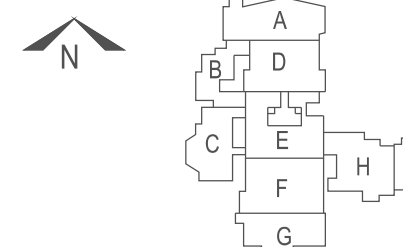
Minnetonka Middle School West
Gym, Stage, and Science
Additions and Alterations
Minnetonka Public Schools District 276
6421 Hazeltine Blvd
Excelsior, MN 55331

SIGNATURE / SEAL

FOR REVIEW
ONLY

NOT FOR
CONSTRUCTION

KEYPLAN



DRAWN BY
RCQ

CHECKED BY
ARL

ISSUED FOR
CITY SUBMITTAL

ISSUE DATE
FEB 13, 2026

SHEET NAME

EXISTING CONDITIONS
AND REMOVALS PLAN

ATS&R PROJECT NO.
25061

REVISION NO.

SHEET NUMBER

C2.2

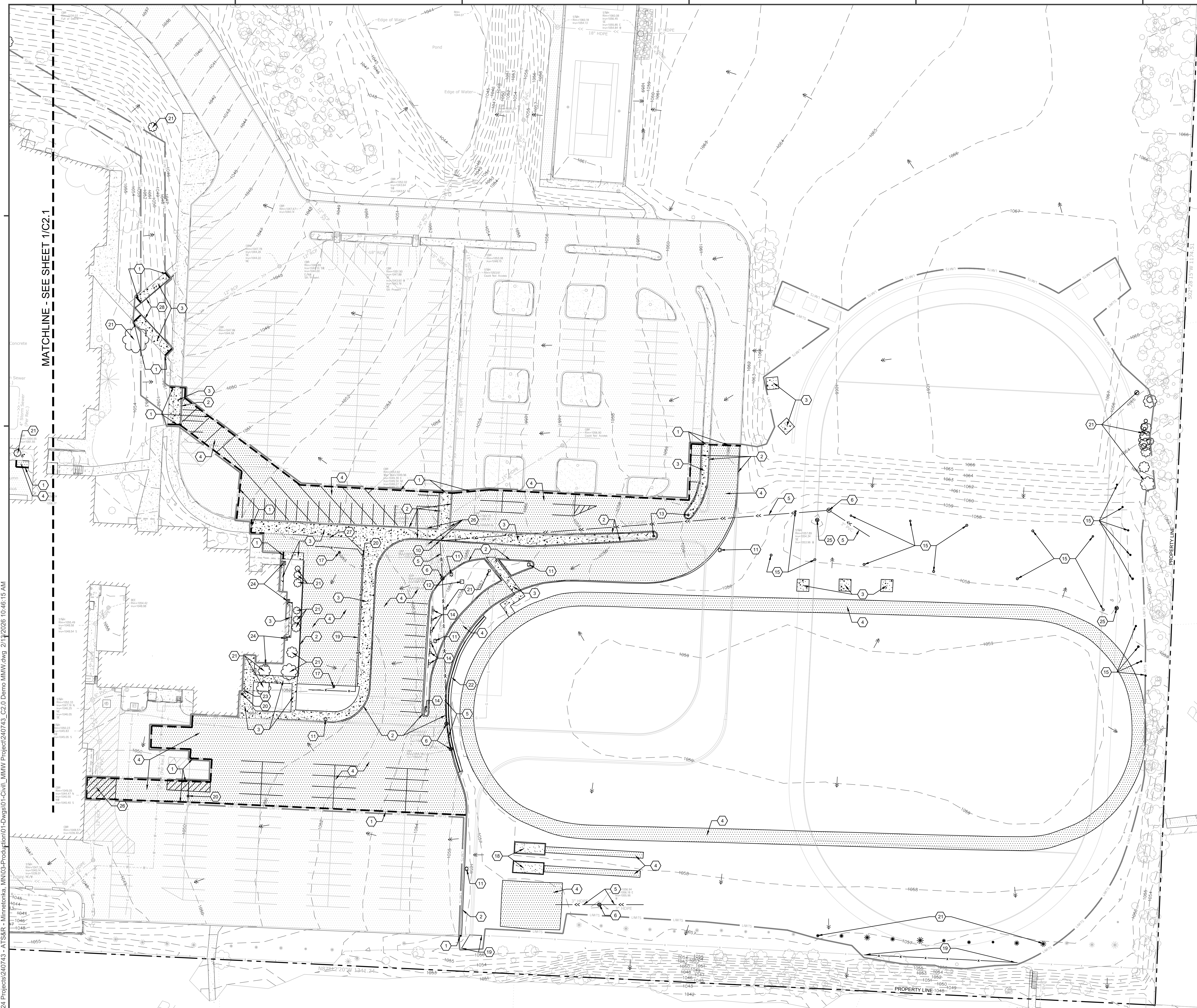
LEGEND

- PROPOSED SAWCUT LINE
- [Pattern] BITUMINOUS PAVEMENT TO BE REMOVED
- [Pattern] CONCRETE PAVEMENT TO BE REMOVED
- - - EXISTING PROPERTY LINE
- ← DENOTES SURFACE DRAINAGE
- - - EXISTING MAJOR CONTOUR
- - - EXISTING MINOR CONTOUR
- LIMITS OF CONSTRUCTION
- EXISTING OVERHEAD UTILITY LINE
- EXISTING ELECTRIC LINE
- EXISTING WATER LINE
- EXISTING GAS LINE
- EXISTING STORM SEWER
- EXISTING SANITARY SEWER
- EXISTING FENCE
- [Symbol] EXISTING UTILITY VAULT
- [Symbol] EXISTING LIGHT POLE
- [Symbol] EXISTING TRANSFORMER
- [Symbol] EXISTING FIRE HYDRANT
- [Symbol] EXISTING VALVE
- [Symbol] EXISTING GAS METER
- [Symbol] EXISTING SANITARY MANHOLE
- [Symbol] EXISTING CATCHBASIN
- [Symbol] EXISTING STORM MANHOLE
- [Symbol] EXISTING ROOF DRAIN
- [Symbol] EXISTING POST
- [Symbol] EXISTING SIGN
- [Symbol] EXISTING TREE
- [Pattern] EXISTING BITUMINOUS PAVEMENT
- [Pattern] EXISTING CONCRETE PAVEMENT

KEY NOTES

- 1 PROPOSED SAWCUT LINE. SAWCUT AT NEAREST JOINT AS APPLICABLE
- 2 REMOVE CURB AND GUTTER
- 3 REMOVE CONCRETE PAVEMENT
- 4 REMOVE BITUMINOUS PAVEMENT
- 5 REMOVE STORM SEWER
- 6 REMOVE STORM MANHOLE / CATCH BASIN
- 7 REMOVE SANITARY SEWER
- 8 REMOVE SANITARY MANHOLE
- 9 STORM MANHOLE / CATCH BASIN TO REMAIN. ADJUST RIM AS NECESSARY
- 10 BULKHEAD OPENING IN MANHOLE WHERE PIPE HAS BEEN REMOVED
- 11 REMOVE LIGHT POLE. COORDINATE WITH ELECTRICAL
- 12 REMOVE UTILITY VAULT. COORDINATE WITH ELECTRICAL
- 13 REMOVE GATE AND SALVAGE FOR REINSTALLATION
- 14 REMOVE AND DISPOSE OF SIGN POSTS AND CONCRETE FOOTING. SALVAGE SIGN PANEL FOR REINSTALLATION INTO PROJECT AS NECESSARY
- 15 TREE TO BE SPADE AND TRANSPLANTED
- 16 REMOVE COLUMN AND OVERHANG - SEE ARCHITECTURAL
- 17 REMOVE BASKETBALL HOOP POST AND CONCRETE FOOTINGS. SALVAGE HOOP, POST AND BACKBOARD FOR REINSTALLATION
- 18 REMOVE LONG JUMP / TRIPLE JUMP PIT
- 19 REMOVE EXISTING FENCE POSTS SET IN CONCRETE FOOTINGS. SALVAGE AIR-DRIVEN POSTS. ALL HORIZONTAL MEMBERS, FENCE FABRIC, AND GATE PANELS. SALVAGE MATERIALS FOR REINSTALLATION
- 20 REMOVE BOLLARD
- 21 REMOVE TREE. SEE L1.1 FOR COMPLETE TREE LIST
- 22 REMOVE WALL
- 23 REMOVE WATER SPIGOT
- 24 REMOVE ROOF DRAIN
- 25 REMOVE CLEANOUT AND DRAIN TILE
- 26 CATCH BASIN/ STORM MANHOLE TO REMAIN
- 27 LIGHT POLE TO REMAIN
- 28 RAILING TO BE REMOVED AND SALVAGED FOR REINSTALLATION

PROPOSED IMPROVEMENTS ARE SHOWN FOR REFERENCE ONLY

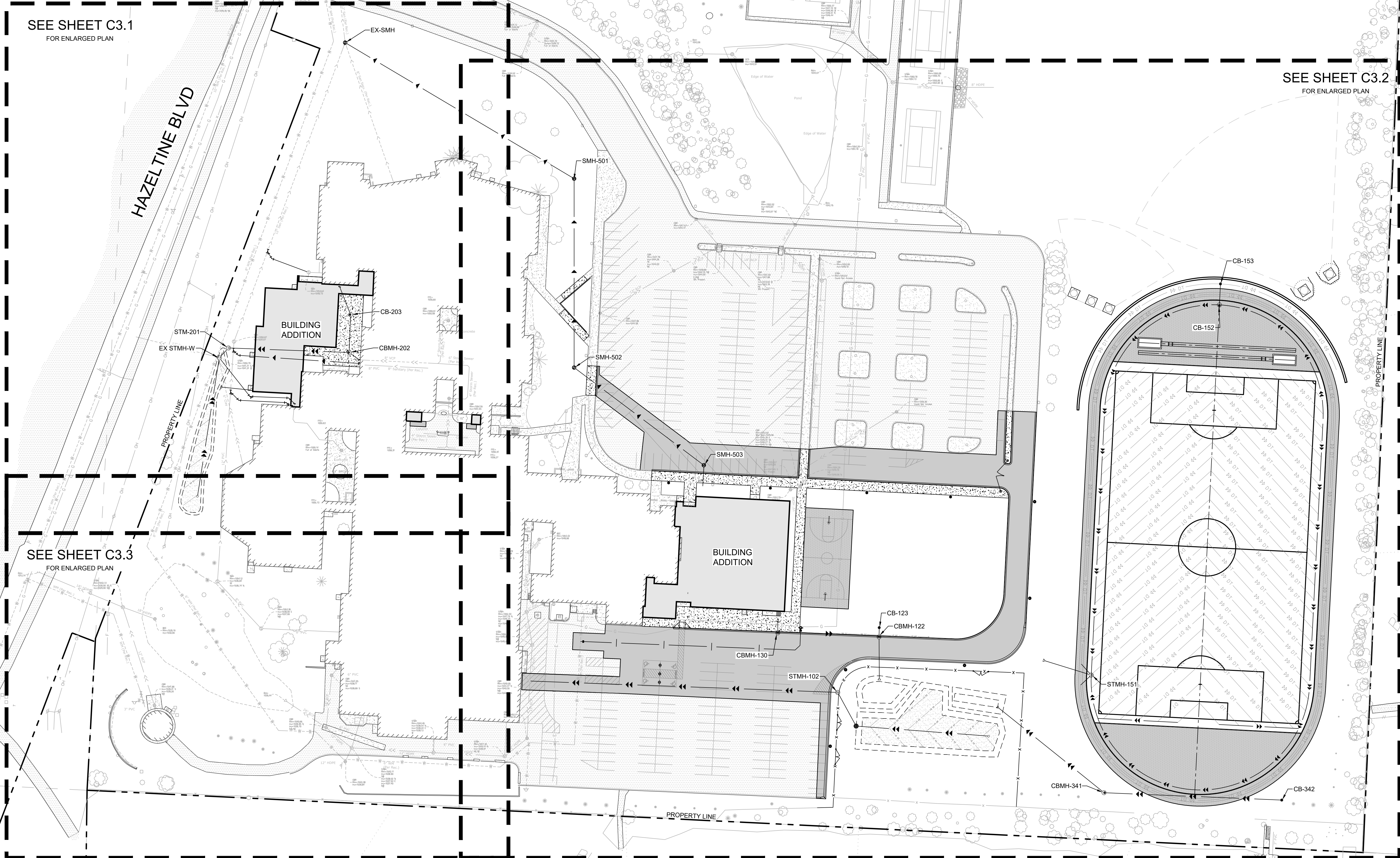


MATCHLINE - SEE SHEET 1/C2.1

F:\03-Projects\2024-Projects\240743-ATSR-Minnetonka-MN\03-Production\01-Dwg\01-Civil\MMW-Project\240743_C2.0-Demo\MMW.dwg 2/13/2026 10:46:15 AM

SITE DATA TABLE	
PARCEL SIZE	1,339,233 SF 30.74 AC
EXISTING CONDITIONS	
SITE COVERED BY BLDG	11.1 % (3.41 AC)
SITE COVERED BY IMPERV SURFACE	8.9 % (2.74 AC)
SITE COVERED BY PARKING	16.2 % (4.86 AC)
TOTAL IMPERVIOUS	36.2% (11.13 AC)
EX # OF EMPLOYEES	209
PARKING SPACES REQ	
PARKING PROVIDED	327 ST
STD PKG	319 ST
ADA PKG	8 ST
HEIGHT OF BUILDING	3X FT
BUILDING USE BREAKDOWN	
EDUCATION	100 %
PROPOSED CONDITIONS	
DISTURBED AREA	8.2 AC
SITE COVERED BY BLDG	12.8 % (3.94 AC)
SITE COVERED BY IMPERV SURFACE	16.9 % (5.20 AC)
(INCLUDING SYNTHETIC TURF FIELD)	
SITE COVERED BY PARKING	16.0 % (4.92 AC)
TOTAL IMPERVIOUS	45.7% (14.06 AC)
IMPERVIOUS INCREASE	2.9 AC
PROPOSED # OF EMPLOYEES	209
PARKING SPACES REQ	
PARKING PROVIDED	329 ST
HEIGHT OF BUILDING	3X FT
BUILDING USE BREAKDOWN	
EDUCATION	100 %

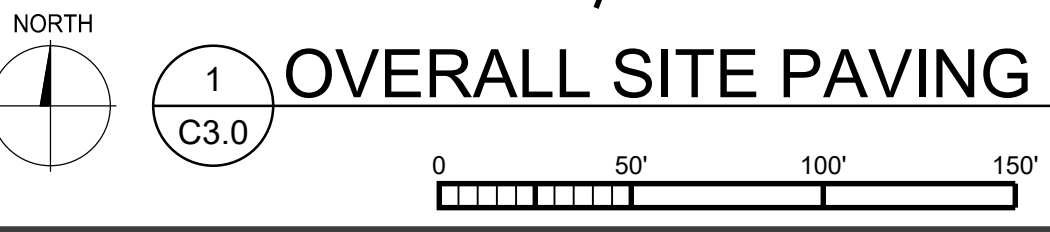
STORM SEWER SCHEDULE				
CATCH BASIN / MANHOLE	GRATE TYPE / INTERIOR	REMARKS	SIZE	PLATE NO.
STM-102	SEE PLATE	SOLID	48"	310027.3
CBMH-122	SEE PLATE	INLET	48"	310027.3
CB-133	R-4341-A	STOCK	30"	310027.3
CBMH-130	SEE PLATE	INLET	48"	310027.3
STM-151	SEE PLATE	SOLID	48"	310027.3
CB-152	R-1792-FG	INLET	48"	310027.3
CB-153	R-4341-A	STOCK	30"	310027.3
STM-201	SEE PLATE	SOLID	48"	310027.3
CBMH-202	R-1792-FG	INLET	48"	310027.3
CB-203	R-1792-FG	INLET	48"	310027.3
CBMH-341	R-3067-V	INLET	48"	310027.3
CB-342	R-4341-A	STOCK	30"	310027.3



SEE SHEET C3.1
FOR ENLARGED PLAN

SEE SHEET C3.2
FOR ENLARGED PLAN

SEE SHEET C3.3
FOR ENLARGED PLAN



OVERALL SITE PAVING AND UTILITY PLAN

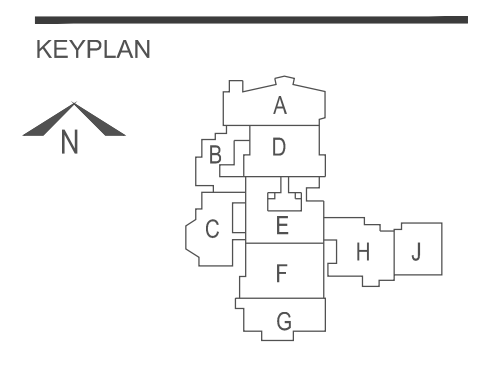
REVISIONS

Minnetonka Middle School West
Gym, Stage, and Science
Additions and Alterations
Minnetonka Public Schools District 276
6421 Hazeltine Blvd
Excelsior, MN 55331

SIGNATURE / SEAL

FOR REVIEW ONLY

NOT FOR CONSTRUCTION



DRAWN BY
RCQ

CHECKED BY
ARL

ISSUED FOR
CITY SUBMITTAL

ISSUE DATE
FEB 13, 2026

SHEET NAME
OVERALL
SITE PAVING
AND UTILITY PLAN

ATS&R PROJECT NO.
25061

REVISION NO.

SHEET NUMBER

C3.0

F:\03-Projects\2024-Projects\240743-ATSR-Minnetonka-MN\03-Production\01-Dwgs\01-Civil\MMW-Project\240743_C3.0-Paving-Utilities-MMW.dwg 2/18/2026 1:27:10 PM

F:\03-Projects\2024-Projects\240743-ATSR-Minnetonka-MN\03-Production\01-Dwg\01-Civil\MMW-Project\240743_C3.0-Paving-Utilities\MMW-pkg_21312026_10:48:05 AM

F:\03-Projects\2024-Projects\240743-ATSR-Minnetonka-MN\03-Production\01-Dwg\01-Civil\MMW-Project\240743_C3.0-Paving-Utilities\MMW-pkg_21312026_10:48:05 AM

F:\03-Projects\2024-Projects\240743-ATSR-Minnetonka-MN\03-Production\01-Dwg\01-Civil\MMW-Project\240743_C3.0-Paving-Utilities\MMW-pkg_21312026_10:48:05 AM

F:\03-Projects\2024-Projects\240743-ATSR-Minnetonka-MN\03-Production\01-Dwg\01-Civil\MMW-Project\240743_C3.0-Paving-Utilities\MMW-pkg_21312026_10:48:05 AM

F:\03-Projects\2024-Projects\240743-ATSR-Minnetonka-MN\03-Production\01-Dwg\01-Civil\MMW-Project\240743_C3.0-Paving-Utilities\MMW-pkg_21312026_10:48:05 AM

F:\03-Projects\2024-Projects\240743-ATSR-Minnetonka-MN\03-Production\01-Dwg\01-Civil\MMW-Project\240743_C3.0-Paving-Utilities\MMW-pkg_21312026_10:48:05 AM

F:\03-Projects\2024-Projects\240743-ATSR-Minnetonka-MN\03-Production\01-Dwg\01-Civil\MMW-Project\240743_C3.0-Paving-Utilities\MMW-pkg_21312026_10:48:05 AM

F:\03-Projects\2024-Projects\240743-ATSR-Minnetonka-MN\03-Production\01-Dwg\01-Civil\MMW-Project\240743_C3.0-Paving-Utilities\MMW-pkg_21312026_10:48:05 AM

F:\03-Projects\2024-Projects\240743-ATSR-Minnetonka-MN\03-Production\01-Dwg\01-Civil\MMW-Project\240743_C3.0-Paving-Utilities\MMW-pkg_21312026_10:48:05 AM

F:\03-Projects\2024-Projects\240743-ATSR-Minnetonka-MN\03-Production\01-Dwg\01-Civil\MMW-Project\240743_C3.0-Paving-Utilities\MMW-pkg_21312026_10:48:05 AM

F:\03-Projects\2024-Projects\240743-ATSR-Minnetonka-MN\03-Production\01-Dwg\01-Civil\MMW-Project\240743_C3.0-Paving-Utilities\MMW-pkg_21312026_10:48:05 AM

F:\03-Projects\2024-Projects\240743-ATSR-Minnetonka-MN\03-Production\01-Dwg\01-Civil\MMW-Project\240743_C3.0-Paving-Utilities\MMW-pkg_21312026_10:48:05 AM

F:\03-Projects\2024-Projects\240743-ATSR-Minnetonka-MN\03-Production\01-Dwg\01-Civil\MMW-Project\240743_C3.0-Paving-Utilities\MMW-pkg_21312026_10:48:05 AM

F:\03-Projects\2024-Projects\240743-ATSR-Minnetonka-MN\03-Production\01-Dwg\01-Civil\MMW-Project\240743_C3.0-Paving-Utilities\MMW-pkg_21312026_10:48:05 AM

F:\03-Projects\2024-Projects\240743-ATSR-Minnetonka-MN\03-Production\01-Dwg\01-Civil\MMW-Project\240743_C3.0-Paving-Utilities\MMW-pkg_21312026_10:48:05 AM

F:\03-Projects\2024-Projects\240743-ATSR-Minnetonka-MN\03-Production\01-Dwg\01-Civil\MMW-Project\240743_C3.0-Paving-Utilities\MMW-pkg_21312026_10:48:05 AM

F:\03-Projects\2024-Projects\240743-ATSR-Minnetonka-MN\03-Production\01-Dwg\01-Civil\MMW-Project\240743_C3.0-Paving-Utilities\MMW-pkg_21312026_10:48:05 AM

F:\03-Projects\2024-Projects\240743-ATSR-Minnetonka-MN\03-Production\01-Dwg\01-Civil\MMW-Project\240743_C3.0-Paving-Utilities\MMW-pkg_21312026_10:48:05 AM

F:\03-Projects\2024-Projects\240743-ATSR-Minnetonka-MN\03-Production\01-Dwg\01-Civil\MMW-Project\240743_C3.0-Paving-Utilities\MMW-pkg_21312026_10:48:05 AM

F:\03-Projects\2024-Projects\240743-ATSR-Minnetonka-MN\03-Production\01-Dwg\01-Civil\MMW-Project\240743_C3.0-Paving-Utilities\MMW-pkg_21312026_10:48:05 AM

F:\03-Projects\2024-Projects\240743-ATSR-Minnetonka-MN\03-Production\01-Dwg\01-Civil\MMW-Project\240743_C3.0-Paving-Utilities\MMW-pkg_21312026_10:48:05 AM

F:\03-Projects\2024-Projects\240743-ATSR-Minnetonka-MN\03-Production\01-Dwg\01-Civil\MMW-Project\240743_C3.0-Paving-Utilities\MMW-pkg_21312026_10:48:05 AM

F:\03-Projects\2024-Projects\240743-ATSR-Minnetonka-MN\03-Production\01-Dwg\01-Civil\MMW-Project\240743_C3.0-Paving-Utilities\MMW-pkg_21312026_10:48:05 AM

F:\03-Projects\2024-Projects\240743-ATSR-Minnetonka-MN\03-Production\01-Dwg\01-Civil\MMW-Project\240743_C3.0-Paving-Utilities\MMW-pkg_21312026_10:48:05 AM

F:\03-Projects\2024-Projects\240743-ATSR-Minnetonka-MN\03-Production\01-Dwg\01-Civil\MMW-Project\240743_C3.0-Paving-Utilities\MMW-pkg_21312026_10:48:05 AM

F:\03-Projects\2024-Projects\240743-ATSR-Minnetonka-MN\03-Production\01-Dwg\01-Civil\MMW-Project\240743_C3.0-Paving-Utilities\MMW-pkg_21312026_10:48:05 AM

F:\03-Projects\2024-Projects\240743-ATSR-Minnetonka-MN\03-Production\01-Dwg\01-Civil\MMW-Project\240743_C3.0-Paving-Utilities\MMW-pkg_21312026_10:48:05 AM

F:\03-Projects\2024-Projects\240743-ATSR-Minnetonka-MN\03-Production\01-Dwg\01-Civil\MMW-Project\240743_C3.0-Paving-Utilities\MMW-pkg_21312026_10:48:05 AM

F:\03-Projects\2024-Projects\240743-ATSR-Minnetonka-MN\03-Production\01-Dwg\01-Civil\MMW-Project\240743_C3.0-Paving-Utilities\MMW-pkg_21312026_10:48:05 AM

F:\03-Projects\2024-Projects\240743-ATSR-Minnetonka-MN\03-Production\01-Dwg\01-Civil\MMW-Project\240743_C3.0-Paving-Utilities\MMW-pkg_21312026_10:48:05 AM

F:\03-Projects\2024-Projects\240743-ATSR-Minnetonka-MN\03-Production\01-Dwg\01-Civil\MMW-Project\240743_C3.0-Paving-Utilities\MMW-pkg_21312026_10:48:05 AM

F:\03-Projects\2024-Projects\240743-ATSR-Minnetonka-MN\03-Production\01-Dwg\01-Civil\MMW-Project\240743_C3.0-Paving-Utilities\MMW-pkg_21312026_10:48:05 AM

F:\03-Projects\2024-Projects\240743-ATSR-Minnetonka-MN\03-Production\01-Dwg\01-Civil\MMW-Project\240743_C3.0-Paving-Utilities\MMW-pkg_21312026_10:48:05 AM

F:\03-Projects\2024-Projects\240743-ATSR-Minnetonka-MN\03-Production\01-Dwg\01-Civil\MMW-Project\240743_C3.0-Paving-Utilities\MMW-pkg_21312026_10:48:05 AM

F:\03-Projects\2024-Projects\240743-ATSR-Minnetonka-MN\03-Production\01-Dwg\01-Civil\MMW-Project\240743_C3.0-Paving-Utilities\MMW-pkg_21312026_10:48:05 AM

F:\03-Projects\2024-Projects\240743-ATSR-Minnetonka-MN\03-Production\01-Dwg\01-Civil\MMW-Project\240743_C3.0-Paving-Utilities\MMW-pkg_21312026_10:48:05 AM

F:\03-Projects\2024-Projects\240743-ATSR-Minnetonka-MN\03-Production\01-Dwg\01-Civil\MMW-Project\240743_C3.0-Paving-Utilities\MMW-pkg_21312026_10:48:05 AM

F:\03-Projects\2024-Projects\240743-ATSR-Minnetonka-MN\03-Production\01-Dwg\01-Civil\MMW-Project\240743_C3.0-Paving-Utilities\MMW-pkg_21312026_10:48:05 AM

F:\03-Projects\2024-Projects\240743-ATSR-Minnetonka-MN\03-Production\01-Dwg\01-Civil\MMW-Project\240743_C3.0-Paving-Utilities\MMW-pkg_21312026_10:48:05 AM

F:\03-Projects\2024-Projects\240743-ATSR-Minnetonka-MN\03-Production\01-Dwg\01-Civil\MMW-Project\240743_C3.0-Paving-Utilities\MMW-pkg_21312026_10:48:05 AM

F:\03-Projects\2024-Projects\240743-ATSR-Minnetonka-MN\03-Production\01-Dwg\01-Civil\MMW-Project\240743_C3.0-Paving-Utilities\MMW-pkg_21312026_10:48:05 AM

F:\03-Projects\2024-Projects\240743-ATSR-Minnetonka-MN\03-Production\01-Dwg\01-Civil\MMW-Project\240743_C3.0-Paving-Utilities\MMW-pkg_21312026_10:48:05 AM

F:\03-Projects\2024-Projects\240743-ATSR-Minnetonka-MN\03-Production\01-Dwg\01-Civil\MMW-Project\240743_C3.0-Paving-Utilities\MMW-pkg_21312026_10:48:05 AM

F:\03-Projects\2024-Projects\240743-ATSR-Minnetonka-MN\03-Production\01-Dwg\01-Civil\MMW-Project\240743_C3.0-Paving-Utilities\MMW-pkg_21312026_10:48:05 AM

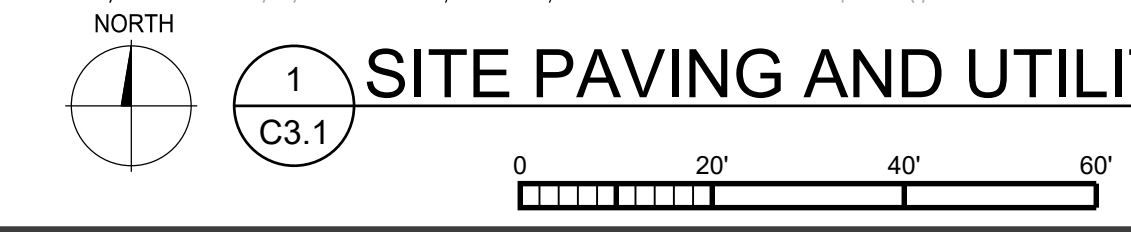
F:\03-Projects\2024-Projects\240743-ATSR-Minnetonka-MN\03-Production\01-Dwg\01-Civil\MMW-Project\240743_C3.0-Paving-Utilities\MMW-pkg_21312026_10:48:05 AM

F:\03-Projects\2024-Projects\240743-ATSR-Minnetonka-MN\03-Production\01-Dwg\01-Civil\MMW-Project\240743_C3.0-Paving-Utilities\MMW-pkg_21312026_10:48:05 AM

F:\03-Projects\2024-Projects\240743-ATSR-Minnetonka-MN\03-Production\01-Dwg\01-Civil\MMW-Project\240743_C3.0-Paving-Utilities\MMW-pkg_21312026_10:48:05 AM

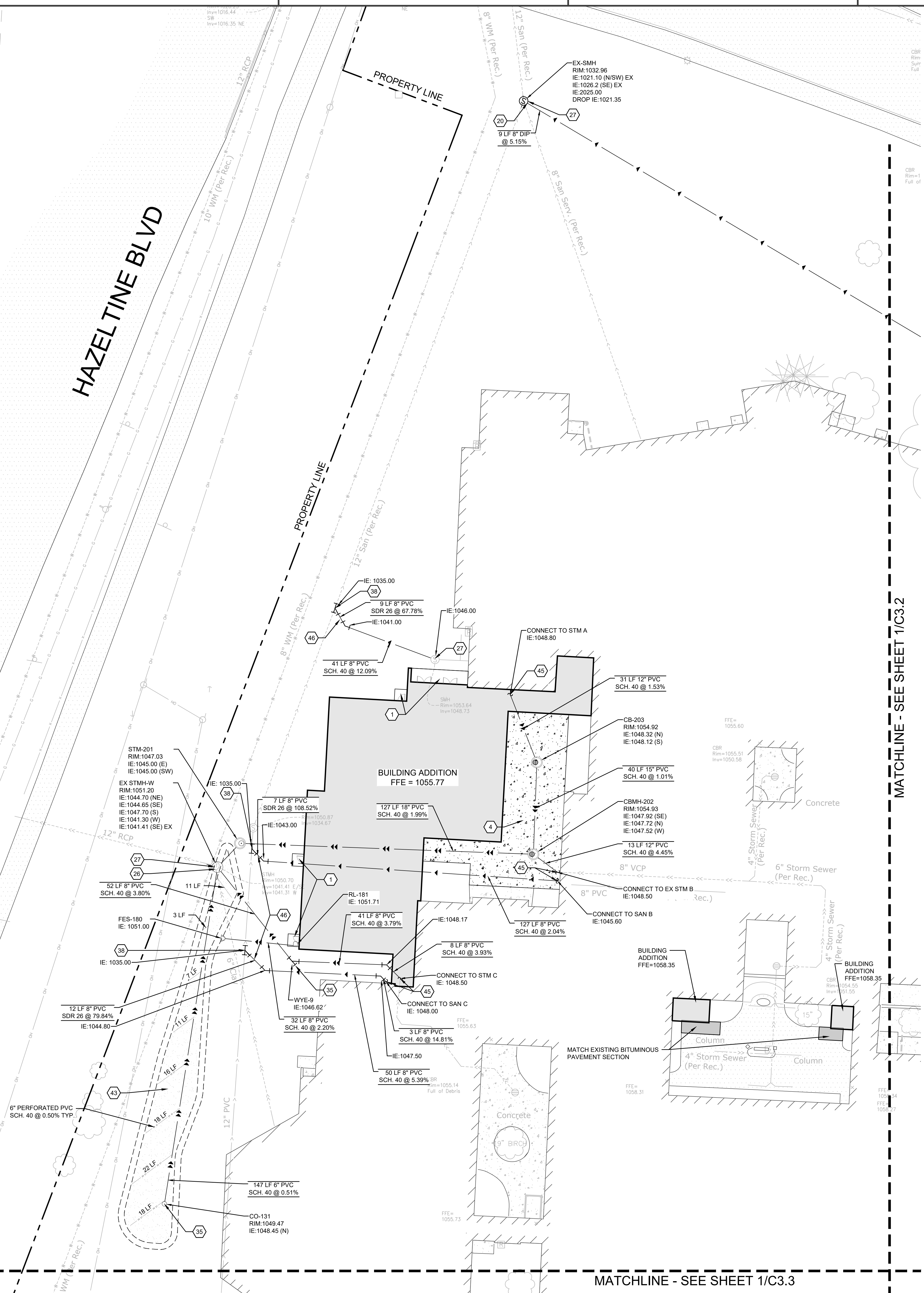
F:\03-Projects\2024-Projects\240743-ATSR-Minnetonka-MN\03-Production\01-Dwg\01-Civil\MMW-Project\240743_C3.0-Paving-Utilities\MMW-pkg_21312026_10:48:05 AM

F:\03-Projects\2024-Projects\240743-ATSR-Minnetonka-MN\03-Production\01-Dwg\01-Civil\MMW-Project\240743_C3.0-Paving-Utilities\MMW-pkg_21312026_10:48:05 AM



SITE PAVING AND UTILITY PLAN

1
C3.1



MATCHLINE - SEE SHEET 1/C3.2

MATCHLINE - SEE SHEET 1/C3.3

LEGEND

- PROPOSED STORM SEWER
- PROPOSED SANITARY SEWER
- PROPOSED WATERMAIN
- PROPOSED DRAIN TILE
- PROPOSED FENCE
- PROPOSED FES
- PROPOSED STORM MANHOLE/ CATCH BASIN
- PROPOSED SANITARY MANHOLE
- PROPOSED WATER VALVE/ HYDRANT
- PROPOSED SIGN
- PROPOSED CONCRETE PAVEMENT
- PROPOSED HEAVY DUTY BITUMINOUS PAVEMENT
- PROPOSED LIGHT DUTY BITUMINOUS PAVEMENT
- PROPOSED FILTRATION BASIN TOP OF FILTER MEDIA
- EXISTING PROPERTY LINE
- EXISTING OVERHEAD UTILITY LINE
- EXISTING ELECTRIC LINE
- EXISTING WATER LINE
- EXISTING GAS LINE
- EXISTING STORM SEWER
- EXISTING SANITARY SEWER
- EXISTING FENCE
- EXISTING UTILITY VAULT
- EXISTING LIGHT POLE
- EXISTING TRANSFORMER
- EXISTING FIRE HYDRANT
- EXISTING VALVE
- EXISTING GAS METER
- EXISTING SANITARY MANHOLE
- EXISTING CATCHBASIN
- EXISTING STORM MANHOLE
- EXISTING ROOF DRAIN
- EXISTING SIGN
- EXISTING POST
- EXISTING TREE
- EXISTING BITUMINOUS PAVEMENT
- EXISTING CONCRETE PAVEMENT

KEY NOTES

- 1 CONCRETE STOOP - SEE STRUCTURAL PLANS
- 2 HEAVY DUTY BITUMINOUS PAVEMENT - SEE DETAIL P/MT-37/C7.1
- 3 LIGHT DUTY BITUMINOUS PAVEMENT - SEE DETAIL P/MT-37/C7.1
- 4 CONCRETE SIDEWALK - SEE DETAIL P/MT-03/C7.1
- 5 CONTRACTION JOINT (TYP.) SEE DETAIL P/MT-19/C7.1
- 6 EXPANSION JOINT (TYP.) SEE DETAIL P/MT-19/C7.1
- 7 B618 CURB AND GUTTER - SEE PLATE NO. 5203/C7.1
- 8 SURMOUNTABLE CURB AND GUTTER, SEE PLATE NO. 5203/C7.1
- 9 TIP OUT CURB AND GUTTER
- 10 5' CURB TRANSITION
- 11 ADA RAMP - SEE DETAIL P/MT-17/C7.1
- 12 REINSTALL SALVAGED CHAIN LINK FENCE, FABRIC AND PROVIDE NEW CHAIN LINK FENCE POSTS, FASTENERS, FITTINGS, AND ACCESSORIES. SEE LANDSCAPE PLANS SPECIFICATIONS
- 13 RETAINING WALL - SEE DETAIL P/MT-12/C7.1
- 14 REINSTALL SALVAGED GATE - SEE SPECIFICATIONS
- 15 CONCRETE DISC PAD AND CAGE - SEE LANDSCAPE PLANS
- 16 CONCRETE SHOT PUT PAD - SEE LANDSCAPE PLANS
- 17 LONG AND TRIPLE JUMP PIT WITH 12" CONCRETE BORDER - SEE LANDSCAPE PLANS
- 18 BITUMINOUS LONG AND TRIPLE JUMP RUNWAY - SEE P/MT-37/C7.3
- 19 REINSTALL SALVAGED BASKETBALL HOOP SYSTEM
- 20 OUTSIDE DROP MANHOLE - SEE DETAIL SAN-10/C7.4
- 21 SYNTHETIC FIELD - SEE SPECIFICATIONS AND DETAIL P/MT-22/C7.4
- 22 SANITARY MANHOLE - SEE PLATE NO. 2101/C7.3
- 23 FIRE HYDRANT AND GATE VALVE - SEE PLATE NO. 1004/C7.2
- 24 GATE VALVE - SEE PLATE NO. 1006/C7.2
- 25 NEW LIGHT POLE - SEE ELECTRICAL PLANS
- 26 ADJUST RIM ELEVATION - SEE GRADING PLAN FOR ELEVATION
- 27 CORE DRILL WITH PRESS SEAL CONNECTION
- 28 16" WIDE GATE - LANDSCAPE PLANS AND SPECIFICATIONS
- 29 6" MULTI-FLOW 90° BEND (TYP.)
- 30 6" MULTI-FLOW DRAINAGE SYSTEM - SEE SPECIFICATIONS AND MULTI-FLOW DATA SHEET ON SHEET C7.4
- 31 8"x4" WYE (TYP.) - SEE DETAIL STM-03/C7.4
- 32 6" MULTI-FLOW END CAP (TYP.)
- 33 MODIFY STRUCTURE TO INSTALL NEENAH R-1733 FRAME AND SOLID COVER
- 34 CONCRETE BORDER - SEE DETAIL P/MT-51/C7.4
- 35 CLEANOUT - SEE DETAIL STM-02/C7.3
- 36 CONCRETE STEPS, 5 RISERS AT 0.50' - SEE STRUCTURAL
- 37 OUTLET CONTROL STRUCTURE - SEE STANDARD PLATE NO. 3109/C7.3
- 38 CUT IN WYE - SEE STANDARD PLATE NO. 2003/C7.2
- 39 REPLACE SALVAGED RAILING
- 40 6" 45° BEND
- 41 CUT IN TEE CONNECTION TO EXISTING WATERMAIN
- 42 SUBSURFACE DRAIN TILE - SEE PLATE NO. 5232/C7.1
- 43 FILTRATION BASIN - SEE DETAILS STM-12/C7.2 AND STM-19/C7.2
- 44 DRAIN TILE UNDER TRACK - SEE DETAIL STM-37/C7.1
- 45 COORDINATE CONNECTION WITH MECHANICAL
- 46 SANITARY SEWER RISER - SEE DETAIL SAN-08/C7.4

ATSR

ARCHITECTURE ENGINEERING
 PLANNING TECHNOLOGY
 INTERIOR DESIGN LANDSCAPE ARCHITECTURE

8501 GOLDEN VALLEY ROAD
 SUITE 300
 MINNEAPOLIS, MINNESOTA 55427

TEL: 763.545.3731
 FAX: 763.525.3289
 WEB: www.atstr.com

Armstrong, Torseth, Skold & Rydberg, Inc. 2026
 CONSULTANTS



VAA, LLC 763.559.0100
 2200 Benchline Lane N, Suite 200 www.vaaing.com
 Plymouth, MN 55441 Project # 240743

REVISIONS

Minnetonka Middle School West
 Gym, Stage, and Science
 Additions and Alterations

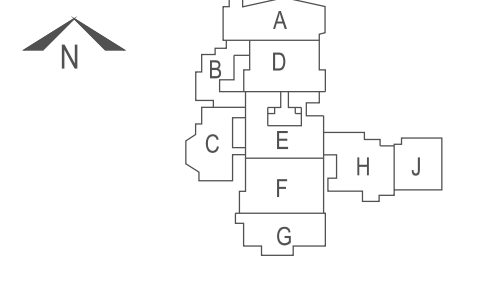
Minnetonka Public Schools District 276
 6421 Hazeltine Blvd
 Excelsior, MN 55331

SIGNATURE / SEAL

FOR REVIEW ONLY

NOT FOR CONSTRUCTION

KEY PLAN



DRAWN BY
RCQ

CHECKED BY
ARL

ISSUED FOR
CITY SUBMITTAL

ISSUE DATE
FEB 13, 2026

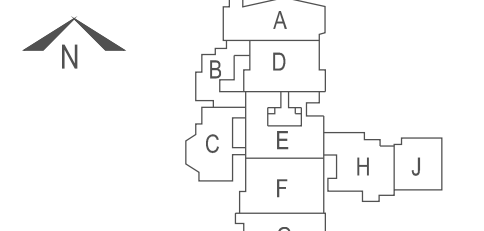
SHEET NAME
SITE PAVING AND UTILITY PLAN

ATS&R PROJECT NO.
25061

REVISION NO.

SHEET NUMBER

C3.1

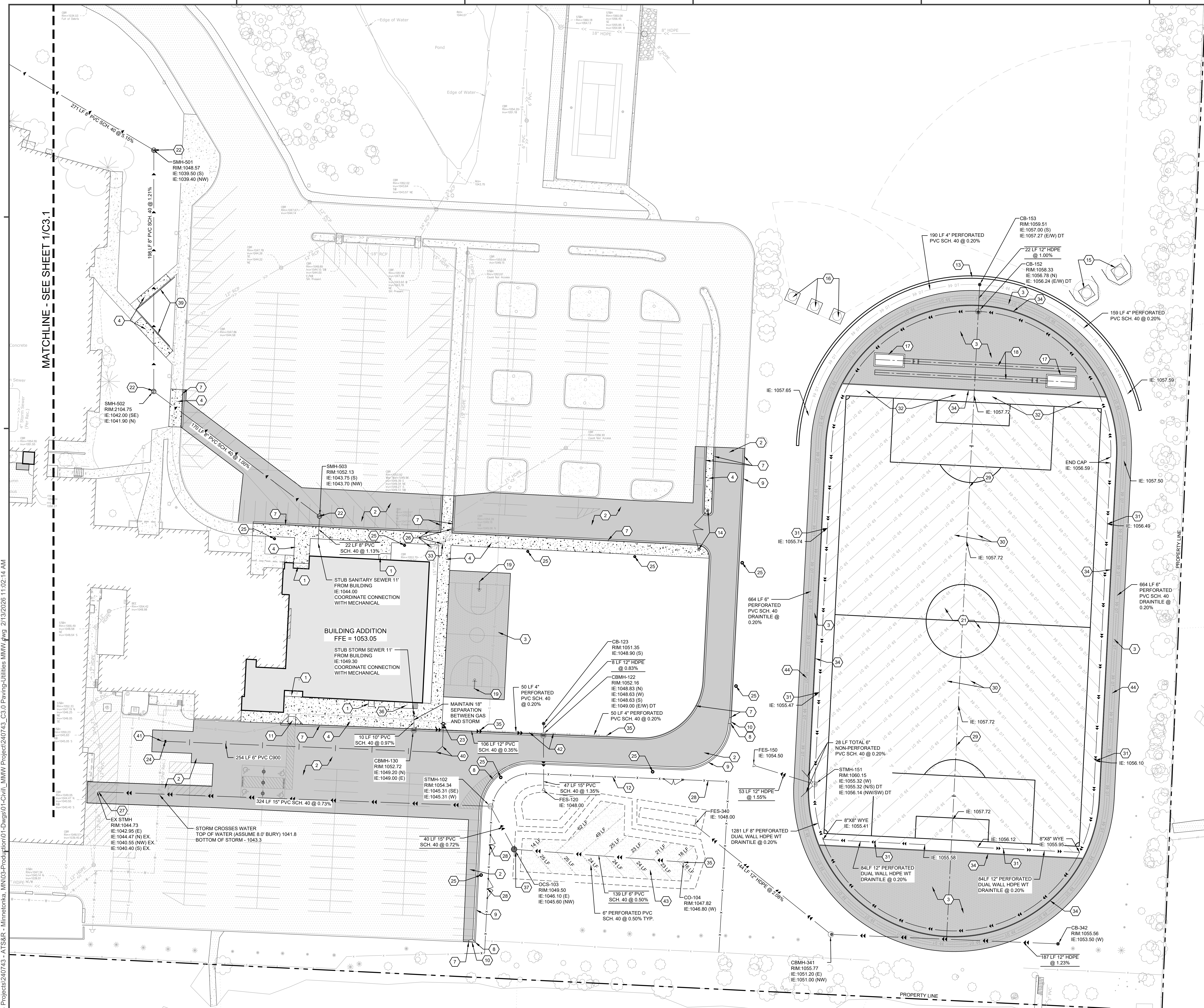


LEGEND

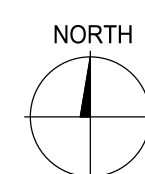
- PROPOSED STORM SEWER
- PROPOSED SANITARY SEWER
- PROPOSED WATERMAIN
- PROPOSED DRAIN TILE
- PROPOSED FENCE
- PROPOSED FES
- PROPOSED STORM MANHOLE/ CATCH BASIN
- PROPOSED SANITARY MANHOLE
- ◆ PROPOSED WATER VALVE/ HYDRANT
- ◆ PROPOSED SIGN
- PROPOSED CONCRETE PAVEMENT
- PROPOSED HEAVY DUTY BITUMINOUS PAVEMENT
- PROPOSED LIGHT DUTY BITUMINOUS PAVEMENT
- PROPOSED FILTRATION BASIN TOP OF FILTER MEDIA
- EXISTING PROPERTY LINE
- EXISTING OVERHEAD UTILITY LINE
- EXISTING ELECTRIC LINE
- EXISTING WATER LINE
- EXISTING GAS LINE
- EXISTING STORM SEWER
- EXISTING SANITARY SEWER
- EXISTING FENCE
- EXISTING UTILITY VAULT
- EXISTING LIGHT POLE
- EXISTING TRANSFORMER
- EXISTING FIRE HYDRANT
- EXISTING VALVE
- EXISTING GAS METER
- EXISTING SANITARY MANHOLE
- EXISTING CATCHBASIN
- EXISTING STORM MANHOLE
- EXISTING ROOF DRAIN
- EXISTING POST
- EXISTING SIGN
- EXISTING TREE
- EXISTING BITUMINOUS PAVEMENT
- EXISTING CONCRETE PAVEMENT

KEY NOTES

- 1 CONCRETE STOOP - SEE STRUCTURAL PLANS
- 2 HEAVY DUTY BITUMINOUS PAVEMENT - SEE DETAIL PMVT-28/C7.1
- 3 LIGHT DUTY BITUMINOUS PAVEMENT - SEE DETAIL PMVT-37/C7.1
- 4 CONCRETE SIDEWALK - SEE DETAIL PMVT-03/C7.1
- 5 CONTRACTION JOINT (TYP) - SEE DETAIL PMVT-19/C7.1
- 6 EXPANSION JOINT (TYP) - SEE DETAIL PMVT-19/C7.1
- 7 B618 CURB AND GUTTER - SEE PLATE NO. 5203/C7.1
- 8 SURMOUNTABLE CURB AND GUTTER - SEE PLATE NO. 5203/C7.1
- 9 TIP OUT CURB AND GUTTER
- 10 5" CURB TRANSITION
- 11 ADA RAMP - SEE DETAIL PMVT-17/C7.1
- 12 REINSTALL SALVAGED CHAIN LINK FENCE, FABRIC AND PROVIDE NEW CHAIN LINK FENCE POSTS, FASTENERS, FITTINGS, AND ACCESSORIES. SEE LANDSCAPE PLANS SPECIFICATIONS
- 13 RETAINING WALL - SEE DETAIL PMVT-12/C7.1
- 14 REINSTALL SALVAGED GATE - SEE SPECIFICATIONS
- 15 CONCRETE DISCUS PAD AND CAGE - SEE LANDSCAPE PLANS
- 16 CONCRETE SHOT PUT PAD - SEE LANDSCAPE PLANS
- 17 LONG AND TRIPLE JUMP PIT WITH 12" CONCRETE BORDER - SEE LANDSCAPE PLANS
- 18 BITUMINOUS LONG AND TRIPLE JUMP RUNWAY - SEE PMVT-37/C7.3
- 19 REINSTALL SALVAGED BASKETBALL HOOP SYSTEM
- 20 OUTSIDE DROP MANHOLE - SEE DETAIL SAN-10/C7.4
- 21 SYNTHETIC FIELD - SEE SPECIFICATIONS AND DETAIL PMVT-22/C7.4
- 22 SANITARY MANHOLE - SEE PLATE NO. 2101/C7.3
- 23 FIRE HYDRANT AND GATE VALVE - SEE PLATE NO. 1004/C7.2
- 24 GATE VALVE - SEE PLATE NO. 1006/C7.2
- 25 NEW LIGHT POLE - SEE ELECTRICAL PLANS
- 26 ADJUST RIM ELEVATION - SEE GRADING PLAN FOR ELEVATION
- 27 CORE DRILL WITH PRESS SEAL CONNECTION
- 28 16" WIDE GATE - LANDSCAPE PLANS AND SPECIFICATIONS
- 29 6" MULTIFLOW 90° BEND (TYP.)
- 30 6" MULTIFLOW DRAINAGE SYSTEM - SEE SPECIFICATIONS AND MULTIFLOW DATA SHEET SAN-03/C7.4
- 31 8"x8" WYE (TYP.) - SEE DETAIL STM-03/C7.4
- 32 6" MULTIFLOW END CAP (TYP.)
- 33 MODIFY STRUCTURE TO INSTALL NEENAH R-1733 FRAME AND SOLID COVER
- 34 CONCRETE BORDER - SEE DETAIL PMVT-51/C7.4
- 35 CLEANOUT - SEE DETAIL STM-02/C7.3
- 36 CONCRETE STEPS, 5 RISERS AT 0.50" - SEE STRUCTURAL
- 37 OUTLET CONTROL STRUCTURE - SEE STANDARD PLATE NO. 3189/C7.3
- 38 CUT IN WYE - SEE STANDARD PLATE NO. 2003/C7.2
- 39 REPLACE SALVAGED RAILING
- 40 6" 45° BEND
- 41 CUT IN TEE CONNECTION TO EXISTING WATERMAIN
- 42 SUBSURFACE DRAIN TILE - SEE PLATE NO. 5232/C7.1
- 43 FILTRATION BASIN - SEE DETAILS STM-12/C7.2 AND STM-19/C7.2
- 44 DRAIN TILE UNDER TRACK - SEE DETAIL STM-37/C7.1
- 45 COORDINATE CONNECTION WITH MECHANICAL
- 46 SANITARY SEWER RISER - SEE DETAIL SAN-08/C7.4



F:\03-Projects\2024-Projects\240743-AT&SR-Minnetonka-MN\03-Production\01-Dwg\01-Civil_MMW\Project\240743_C3.0 Paving-Utilities_MMW.dwg 2/13/2026 10:47:36 AM

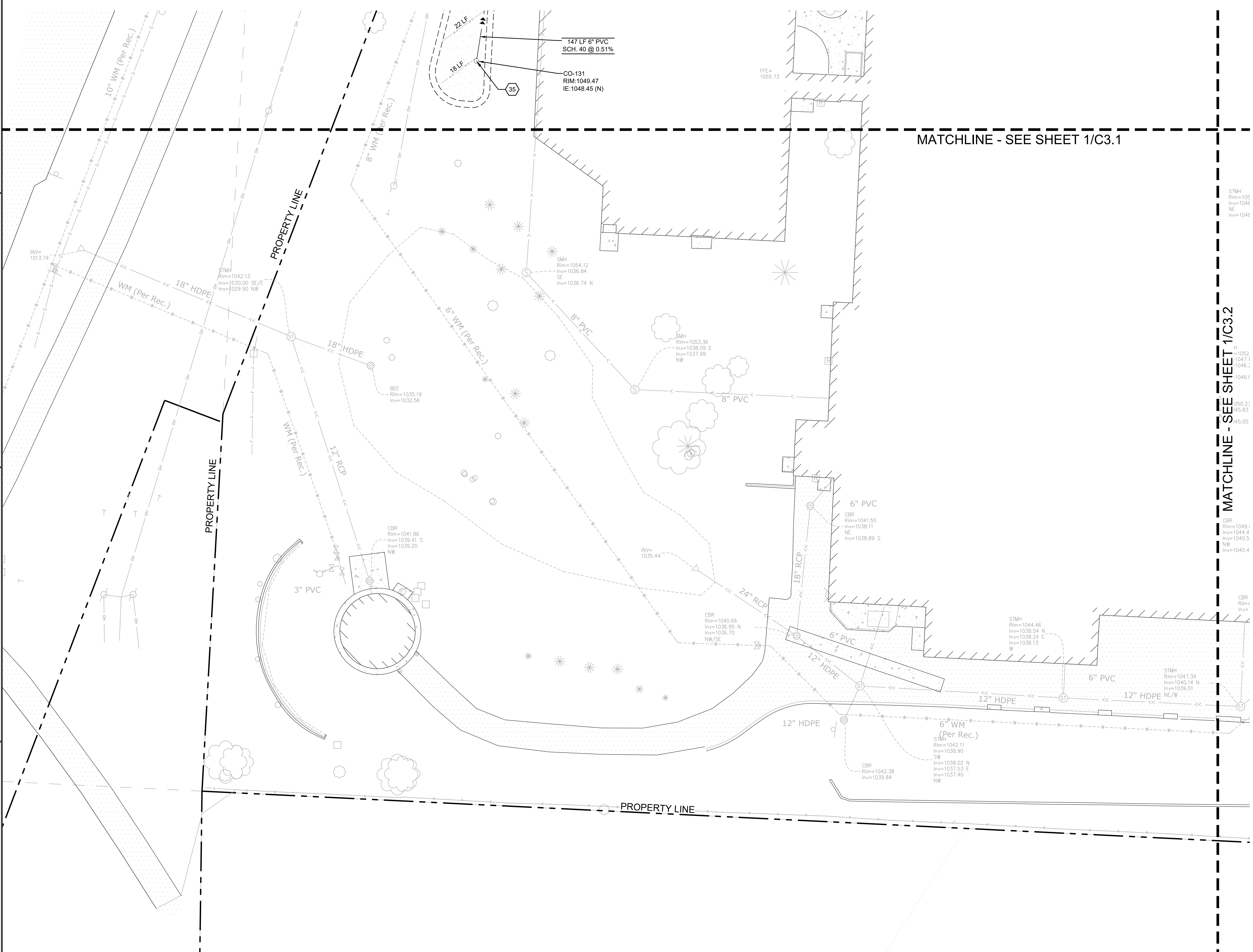


1
C3.3

SITE PAVING AND UTILITY PLAN



1"=20'



MATCHLINE - SEE SHEET 1/C3.1

MATCHLINE - SEE SHEET 1/C3.2

LEGEND

- PROPOSED STORM SEWER
- PROPOSED SANITARY SEWER
- PROPOSED WATERMAIN
- PROPOSED DRAIN TILE
- PROPOSED FENCE
- PROPOSED FES
- PROPOSED STORM MANHOLE/ CATCH BASIN
- PROPOSED SANITARY MANHOLE
- PROPOSED WATER VALVE/ HYDRANT
- PROPOSED SIGN
- PROPOSED CONCRETE PAVEMENT
- PROPOSED HEAVY DUTY BITUMINOUS PAVEMENT
- PROPOSED LIGHT DUTY BITUMINOUS PAVEMENT
- PROPOSED FILTRATION BASIN TOP OF FILTER MEDIA
- EXISTING PROPERTY LINE
- EXISTING OVERHEAD UTILITY LINE
- EXISTING ELECTRIC LINE
- EXISTING WATER LINE
- EXISTING GAS LINE
- EXISTING STORM SEWER
- EXISTING SANITARY SEWER
- EXISTING FENCE
- EXISTING UTILITY VAULT
- EXISTING LIGHT POLE
- EXISTING TRANSFORMER
- EXISTING FIRE HYDRANT
- EXISTING VALVE
- EXISTING GAS METER
- EXISTING SANITARY MANHOLE
- EXISTING CATCHBASIN
- EXISTING STORM MANHOLE
- EXISTING ROOF DRAIN
- EXISTING POST
- EXISTING SIGN
- EXISTING TREE
- EXISTING BITUMINOUS PAVEMENT
- EXISTING CONCRETE PAVEMENT

KEY NOTES

- 1 CONCRETE STOOP - SEE STRUCTURAL PLANS
- 2 HEAVY DUTY BITUMINOUS PAVEMENT - SEE DETAIL P/M-T/37/C7.1
- 3 LIGHT DUTY BITUMINOUS PAVEMENT - SEE DETAIL P/M-T/37/C7.1
- 4 CONCRETE SIDEWALK - SEE DETAIL P/M-T/03/C7.1
- 5 CONTRACTION JOINT (TYP.) SEE DETAIL P/M-T/19/C7.1
- 6 EXPANSION JOINT (TYP.) SEE DETAIL P/M-T/19/C7.1
- 7 B618 CURB AND GUTTER - SEE PLATE NO. 5203/C7.1
- 8 SURMOUNTABLE CURB AND GUTTER, SEE PLATE NO. 5203/C7.1
- 9 TIP OUT CURB AND GUTTER
- 10 5' CURB TRANSITION
- 11 ADA RAMP - SEE DETAIL P/M-T/17/C7.1
- 12 REINSTALL SALVAGED CHAIN LINK FENCE, FABRIC AND PROVIDE NEW CHAIN LINK FENCE POSTS, FASTENERS, FITTINGS, AND ACCESSORIES. SEE LANDSCAPE PLANS SPECIFICATIONS
- 13 RETAINING WALL - SEE DETAIL P/M-T/12/C7.1
- 14 REINSTALL SALVAGED GATE - SEE SPECIFICATIONS
- 15 CONCRETE DISC PAD AND CAGE - SEE LANDSCAPE PLANS
- 16 CONCRETE SHOT PUT PAD - SEE LANDSCAPE PLANS
- 17 LONG AND TRIPLE JUMP PIT WITH 12" CONCRETE BORDER - SEE LANDSCAPE PLANS
- 18 BITUMINOUS LONG AND TRIPLE JUMP RUNWAY - SEE P/M-T/37/C7.3
- 19 REINSTALL SALVAGED BASKETBALL HOOP SYSTEM
- 20 OUTSIDE DROP MANHOLE - SEE DETAIL SAN-10/C7.4
- 21 SYNTHETIC FIELD - SEE SPECIFICATIONS AND DETAIL P/M-T/22/C7.4
- 22 SANITARY MANHOLE - SEE PLATE NO. 2101/C7.3
- 23 FIRE HYDRANT AND GATE VALVE - SEE PLATE NO. 1004/C7.2
- 24 GATE VALVE - SEE PLATE NO. 1006/C7.2
- 25 NEW LIGHT POLE - SEE ELECTRICAL PLANS
- 26 ADJUST RIM ELEVATION - SEE GRADING PLAN FOR ELEVATION
- 27 CORE DRILL WITH PRESS SEAL CONNECTION
- 28 16" WIDE GATE - LANDSCAPE PLANS AND SPECIFICATIONS
- 29 6" MULTI-FLOW 90° BEND (TYP.)
- 30 6" MULTI-FLOW DRAINAGE SYSTEM - SEE SPECIFICATIONS AND MULTI-FLOW DATA SHEET ON SHEET C7.4
- 31 8"x4" WYE (TYP.) - SEE DETAIL STM-03/C7.4
- 32 6" MULTI-FLOW END CAP (TYP.)
- 33 MODIFY STRUCTURE TO INSTALL NEENAH R-1733 FRAME AND SOLID COVER
- 34 CONCRETE BORDER - SEE DETAIL P/M-T/51/C7.4
- 35 CLEANOUT - SEE DETAIL STM-02/C7.3
- 36 CONCRETE STEPS, 5 RISERS AT 0.50' - SEE STRUCTURAL
- 37 OUTLET CONTROL STRUCTURE - SEE STANDARD PLATE NO. 3109/C7.3
- 38 CUT IN WYE - SEE STANDARD PLATE NO. 2003/C7.2
- 39 REPLACE SALVAGED RAILING
- 40 6' 45" BEND
- 41 CUT IN TEE CONNECTION TO EXISTING WATERMAIN
- 42 SUBSURFACE DRAIN TILE - SEE PLATE NO. 5232/C7.1
- 43 FILTRATION BASIN - SEE DETAILS STM-12/C7.2 AND STM-19/C7.2
- 44 DRAIN TILE UNDER TRACK - SEE DETAIL STM-37/C7.1
- 45 COORDINATE CONNECTION WITH MECHANICAL
- 46 SANITARY SEWER RISER - SEE DETAIL SAN-08/C7.4

AT&SR
 ARCHITECTURE ENGINEERING
 PLANNING TECHNOLOGY
 INTERIOR DESIGN LANDSCAPE ARCHITECTURE

8501 GOLDEN VALLEY ROAD
 SUITE 300
 MINNEAPOLIS, MINNESOTA 55427

TEL: 763.545.3731
 FAX: 763.525.3289
 WEB: www.at&sr.com

Armstrong, Torseth, Skold & Hyden, Inc. 2026
 CONSULTANTS



VAA, LLC 763.559.0100
 2300 Barnhart Lane N, Suite 200 www.vaaing.com
 Plymouth, MN 55441 Project # 240743

REVISIONS

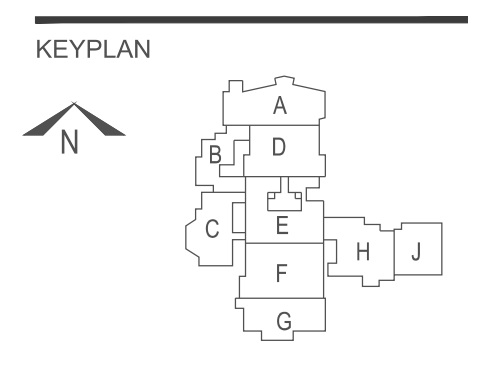
**Minnetonka Middle School West
 Gym, Stage, and Science
 Additions and Alterations**

**Minnetonka Public Schools District 276
 6421 Hazeltine Blvd
 Excelsior, MN 55331**

SIGNATURE / SEAL

FOR REVIEW ONLY

NOT FOR CONSTRUCTION



DRAWN BY
RCQ

CHECKED BY
ARL

ISSUED FOR
CITY SUBMITTAL

ISSUE DATE
FEB 13, 2026

SHEET NAME

SITE PAVING AND UTILITY PLAN

AT&SR PROJECT NO.
25061

REVISION NO.

SHEET NUMBER

C3.3