

# LLD MN\_DA403\_WC\_PLYMOUTH RD

CITY OF MINNETONKA, MN

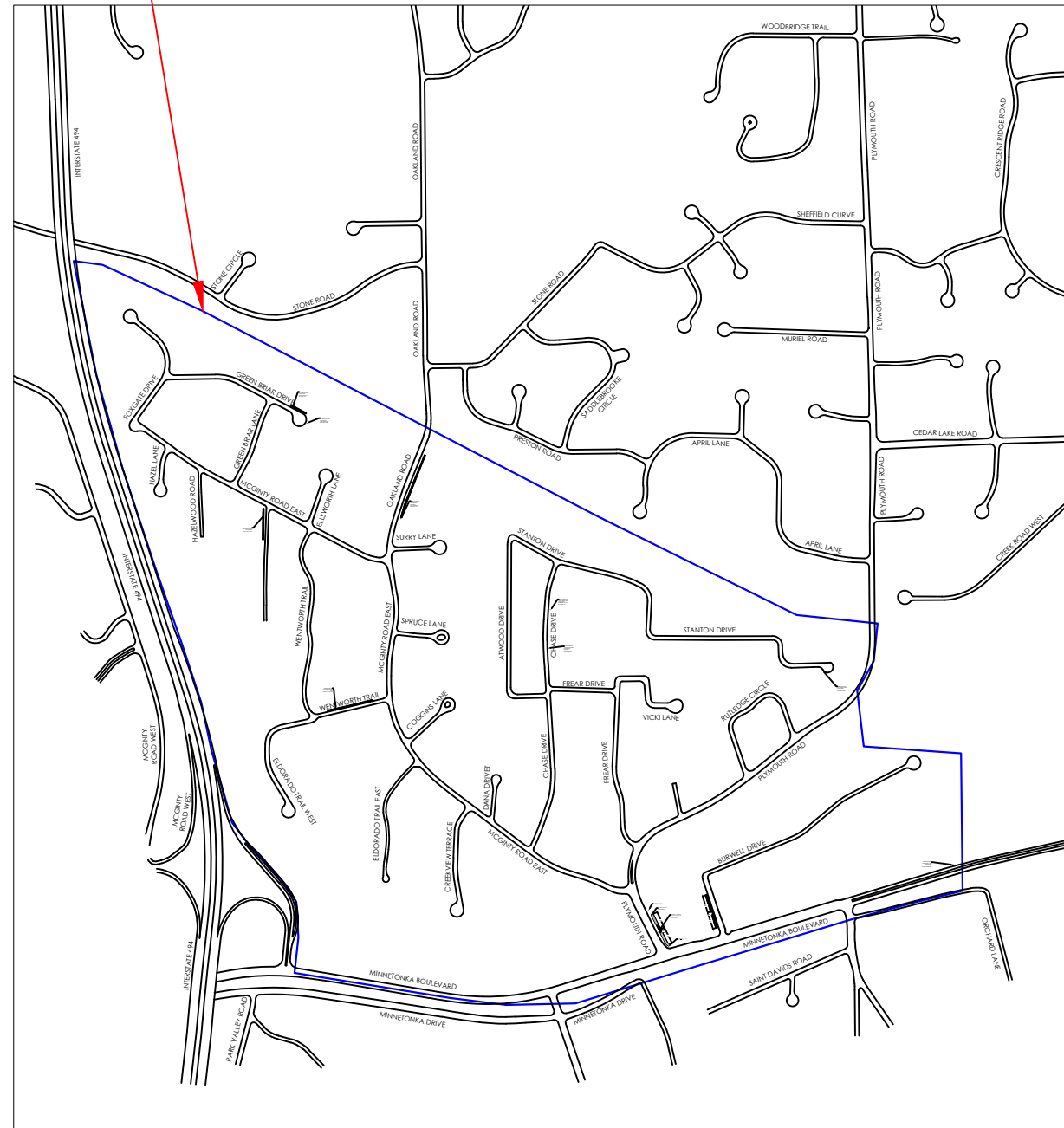
PLACE DISTRIBUTED SPLIT FIBER OPTIC FACILITIES WITHIN THE PUBLIC RIGHT OF WAY AND PUBLIC UTILITY EASEMENTS.

## BILL OF MATERIAL

DESCRIPTION	UNIT	QTY
BORE	L. FT.	274
TRENCH	L. FT.	-
HAND DIG	L. FT.	-
PL. (4) - 0.75" SDR11 CONDUIT	L. FT.	-
PL. (2) - 0.75" SDR11 CONDUIT (TRUNK/BACKBONE)	L. FT.	548
PL. (2) - 0.75" SDR11 CONDUIT (DROPS)	L. FT.	-
PL. (N) 30"x48"x36" HANDHOLE	EACH	-
PL. (N) 24"x36"x36" HANDHOLE	EACH	2
PL. (N) 17"x30"x24" HANDHOLE	EACH	-
PL. (N) 13"x24"x18" HANDHOLE	EACH	-
PL. (N) 11" ROUND FLOWER POT	EACH	-
PL. (N) BS - 6 ROUND PORTS 9" DIA. X 19.5" LONG	EACH	-
PL. (N) 1X8 SPLITTER	EACH	-
PL. (N) 8 PORT TERMINAL	EACH	-
PL. (N) 6.6M STRAND	L. FT.	-
PL. (N) TRACERWIRE	L. FT.	-
PL. (N) UNARMORED 24 CNT FOC	L. FT.	-
PL. (N) ARMORED 24 CNT FOC	L. FT.	-
PL. (N) UNARMORED 48 CNT FOC	L. FT.	-
PL. (N) ARMORED 48 CNT FOC	L. FT.	-
PL. (N) UNARMORED 96 CNT FOC	L. FT.	-
PL. (N) ARMORED 96 CNT FOC	L. FT.	-
PL. (N) UNARMORED 144 CNT FOC	L. FT.	274
PL. (N) ARMORED 144 CNT FOC	L. FT.	-
PL. (N) 5/8" DOUBLE EYE ANCHOR	EACH	-
PL. (N) DOWN GUY	EACH	-
PL. (N) FOC AERIAL SLACK LOOP	L. FT.	-
PL. (N) FOC BURIED SLACK LOOP	L. FT.	-
PL. (N) RISER FOC	L. FT.	-
POLE(S)	EACH	-

DA403

## LOCATION MAP



## LEGEND

	SPLITTER TERMINAL 1X4
	SPLITTER TERMINAL 1X8
	HANDHOLE 30X48 OR 24X36
	HANDHOLE 17X30 OR 13X24
	FLOWER POT (11" Round)
	4' X 4' BORE PIT
	CENTURY LINK POLE
	XCEL POLE
	RISER
	0.75" HDPE CONDUIT
	0.75" HDPE CONDUIT
	0.75" HDPE CONDUIT
	0.75" HDPE CONDUIT
	24 CT FIBER
	48 CT FIBER
	96 CT FIBER
	144 CT FIBER
	288 CT FIBER
	AERIAL STRAND
	AERIAL FIBER DROP
	BURIED FIBER DROP
	DOWN GUY/ANCHOR
	MAN HOLE
	FIRE HYDRANT
	VALVE (WTR, GAS, ETC)
	MISC/UNK STRUCTURE
	EXISTING WATER
	EXISTING COMMUNICATION
	EXISTING GAS
	EXISTING ELECTRICITY
	EXISTING SEWER
	OLT CABINET
	DA BOUNDARY

DRAWING PREPARED FOR:



MN\_DA403\_WC\_PLYMOUTH RD  
DRAWING - FTTH

CITY/COUNTY:

CITY OF MINNETONKA  
HENNEPIN COUNTY



Know what's below.  
Call before you dig.

EMERGENCY CONTACTS:

GAS:

PWR:

CATV:

CATV:

WATER:

DRAWING COPY VERSION:

LLD MN\_DA403  
VERSION 1.0

DRAWING PREPARED BY:



INTREPID  
11001 W 120TH AVE  
SUITE 305  
BROOMFIELD CO 80021  
844-380-8090

REV#	DESC.	ENG.	DATE

FIELD ENG.	CAD	DESIGN

FILE NAME:
MN_DA403.DWG

COVER SHEET

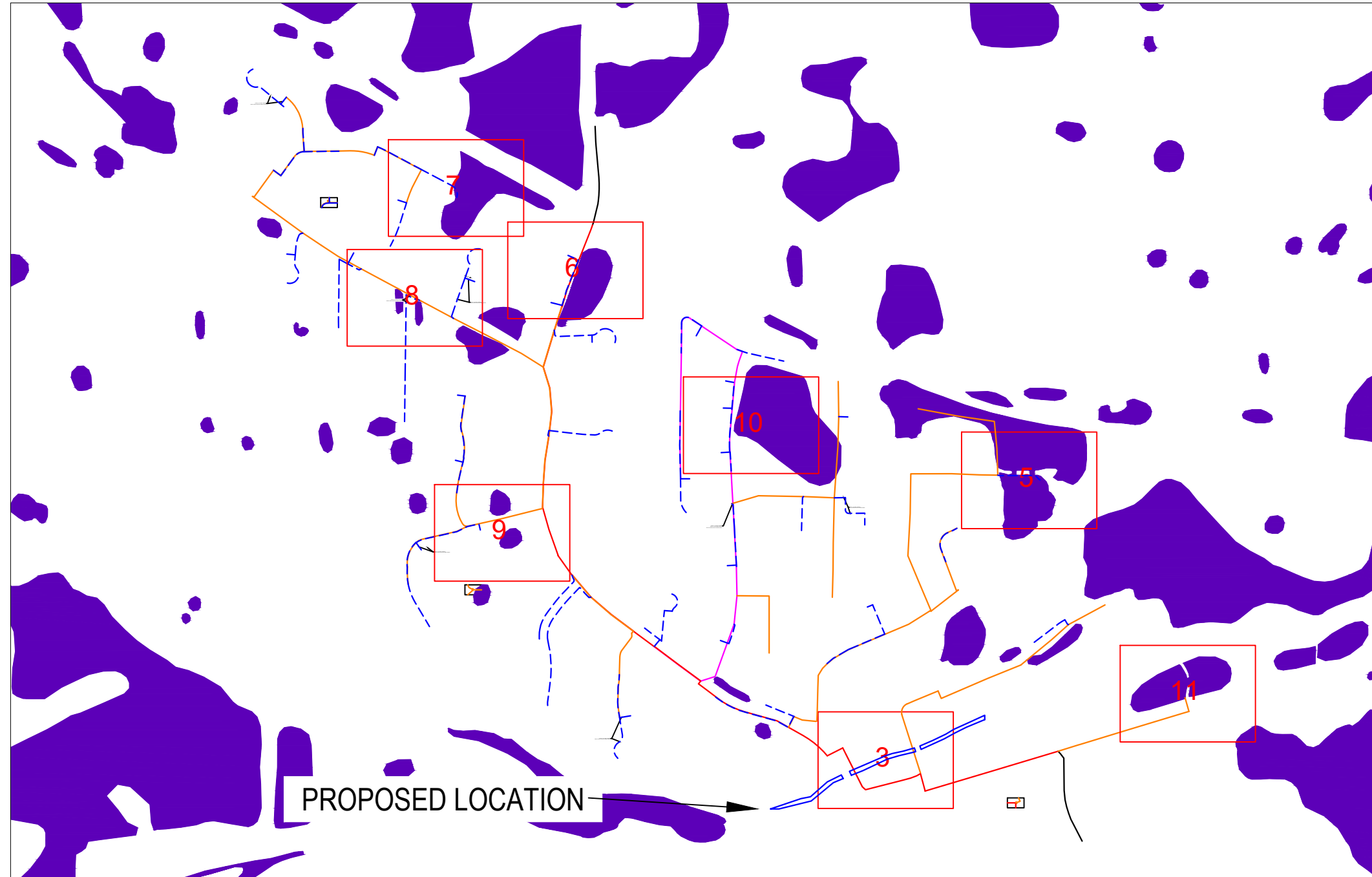
## GENERAL NOTES

- REFER TO POLE PERMIT APPLICATION SPREADSHEETS FOR ACTUAL ATTACHMENT HEIGHTS
- EXISTING AERIAL UTILITIES OMITTED FOR PRINT CLARITY

## INDEX

COVER	COVER SHEET / LEGEND
KEY	KEYMAP
3-4	LLD DESIGN

# KEY MAP



**intrepid**

DESIGN AREA:

MN\_DA403\_WC\_  
PLYMOUTH RD

REV	DATE	DESCRIPTION
1		
2		
3		
4		

PLANS PREPARED BY:

**intrepid**

INTREPID  
11001 W 120TH AVE  
SUITE 305  
BROOMFIELD CO 80021  
844-380-8090

THE INFORMATION CONTAINED IN THIS SET OF DESIGN DOCUMENTS IS PROPRIETARY BY NATURE. ANY USE OR DISCLOSURE TO ANYONE OUTSIDE OF INTREPID FIBER IS PROHIBITED.

DRAWN BY:	DATE:
CHECKED BY:	DATE:
SUBMITTAL NUMBER:	DATE:

SCALE:

**NOT TO SCALE**

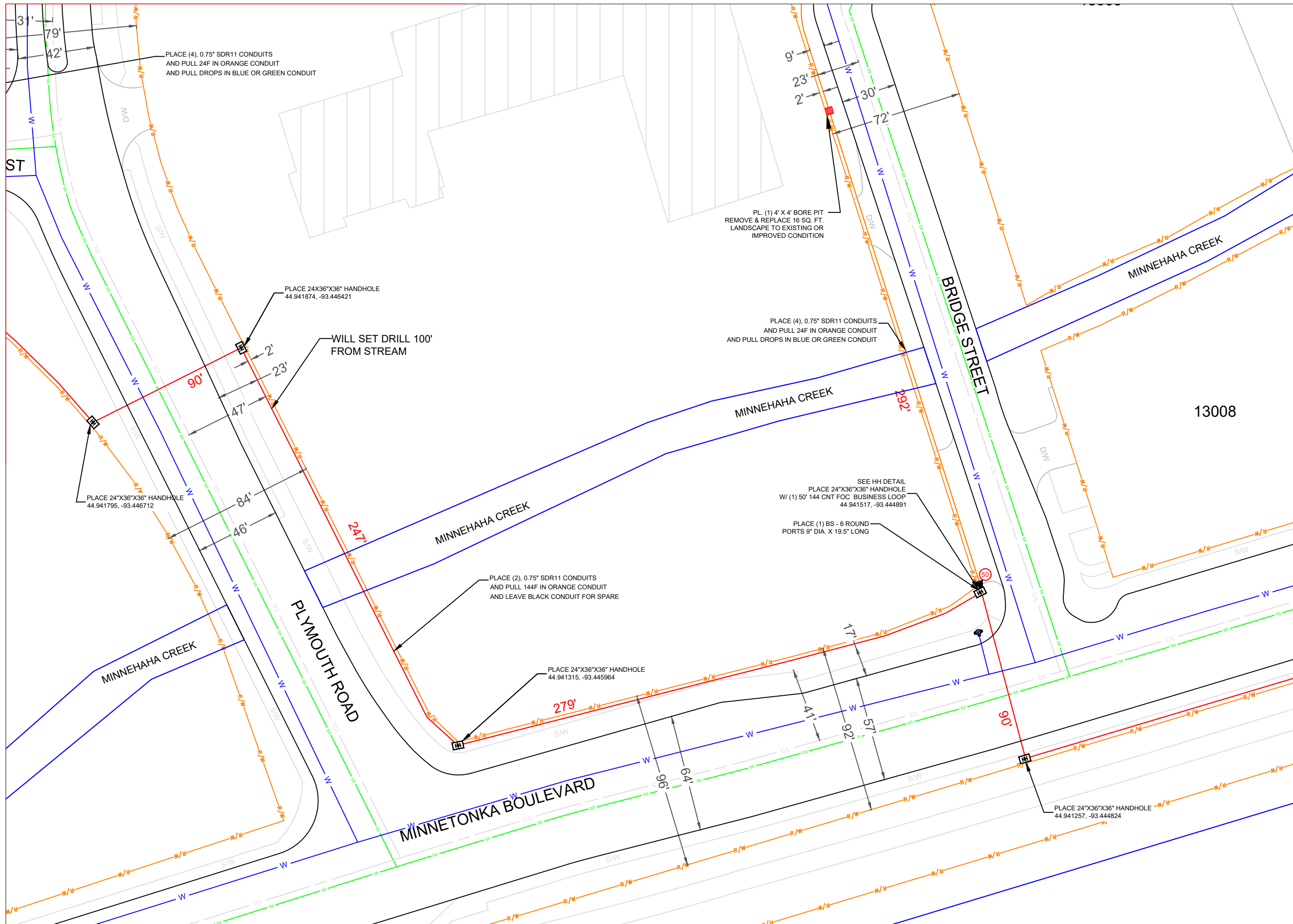
SHEET NUMBER:

**KEY LOCATION**

MATCH TO SHEET 24

MATCH TO SHEET 6

MATCH TO SHEET 4



PLACE (4), 0.75" SDR11 CONDUITS AND PULL 24F IN ORANGE CONDUIT AND PULL DROPS IN BLUE OR GREEN CONDUIT

PL (1) 4' X 4' BORE PIT REMOVE & REPLACE 16 SQ. FT. LANDSCAPE TO EXISTING OR IMPROVED CONDITION

PLACE 24X36"X36" HANDHOLE 44.941874, -93.446421

WILL SET DRILL 100' FROM STREAM

PLACE (4), 0.75" SDR11 CONDUITS AND PULL 24F IN ORANGE CONDUIT AND PULL DROPS IN BLUE OR GREEN CONDUIT

PLACE 24"X36"X36" HANDHOLE 44.941795, -93.446712

SEE HH DETAIL PLACE 24"X36"X36" HANDHOLE W/ (1) 50' 144 CNT FOC BUSINESS LOOP 44.941517, -93.444891

PLACE (2), 0.75" SDR11 CONDUITS AND PULL 144F IN ORANGE CONDUIT AND LEAVE BLACK CONDUIT FOR SPARE

PLACE (1) BS - 6 ROUND PORTS 9" DIA. X 19.5" LONG

PLACE 24"X36"X36" HANDHOLE 44.941315, -93.445964

PLACE 24"X36"X36" HANDHOLE 44.941257, -93.444824



DESIGN AREA:

MN\_DA403\_WC\_PLYMOUTH RD

REV	DATE	DESCRIPTION
1		
2		
3		
4		

PLANS PREPARED BY:



INTREPID  
11001 W 120TH AVE  
SUITE 305  
BROOMFIELD CO 80021  
844-380-8070

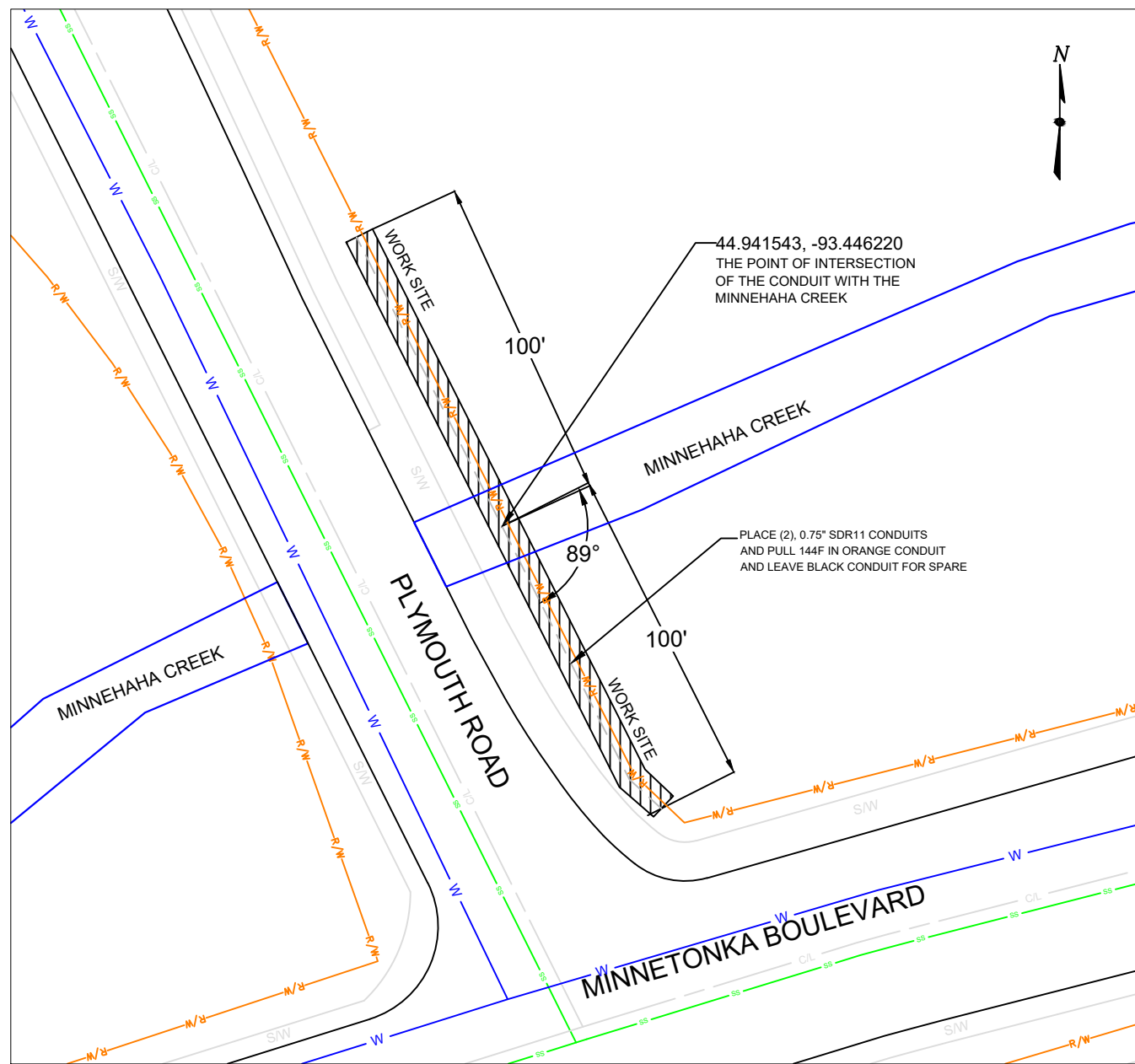
THE INFORMATION CONTAINED IN THIS SET OF DESIGN DOCUMENTS IS PROPRIETARY BY NATURE. ANY USE OR DISCLOSURE TO ANYONE OUTSIDE OF INTREPID FIBER IS PROHIBITED.

DRAWN BY:	DATE:
CHECKED BY:	DATE:
SUBMITTAL NUMBER:	DATE:

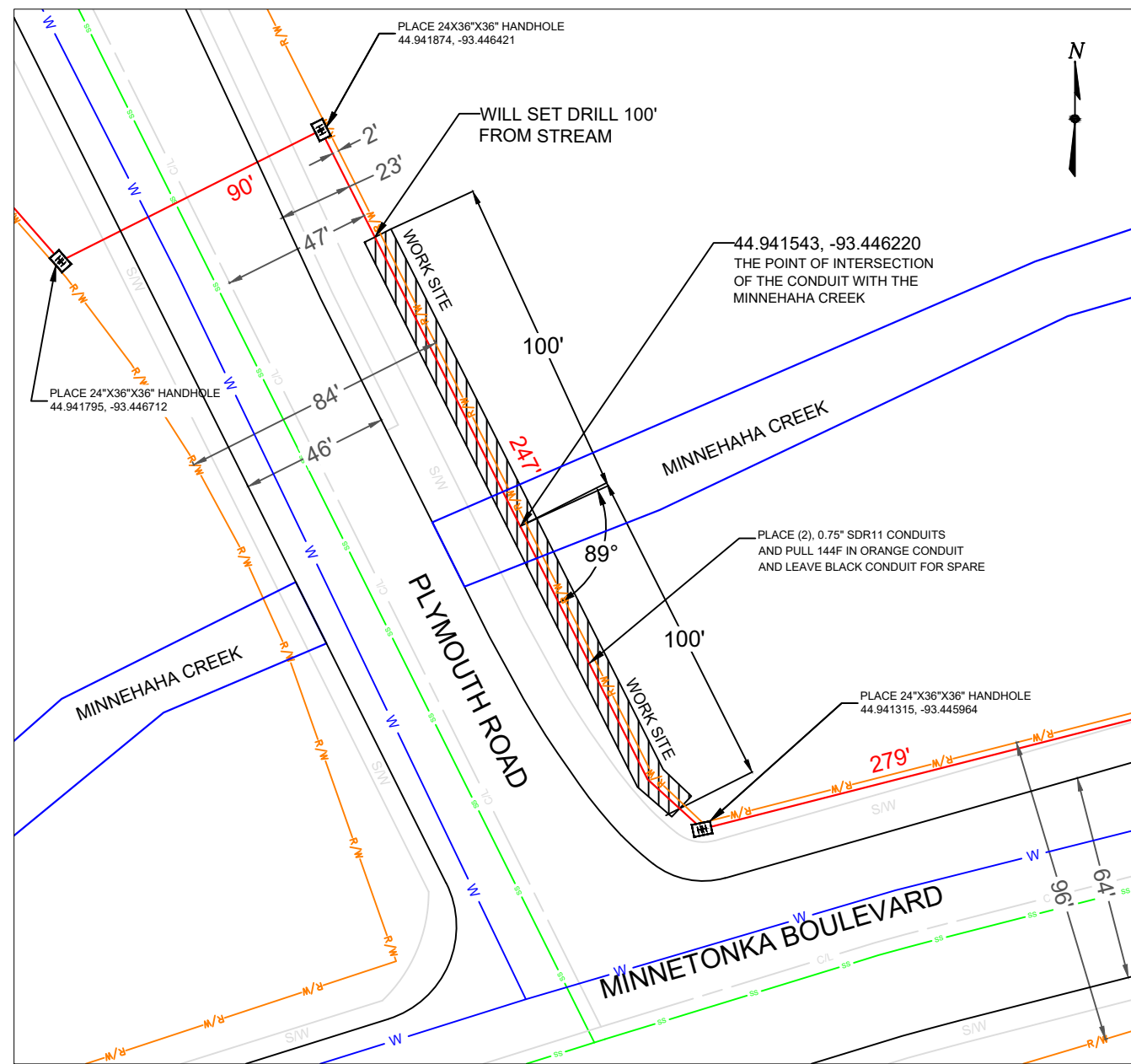
SCALE:  
**SCALE: 1:50**



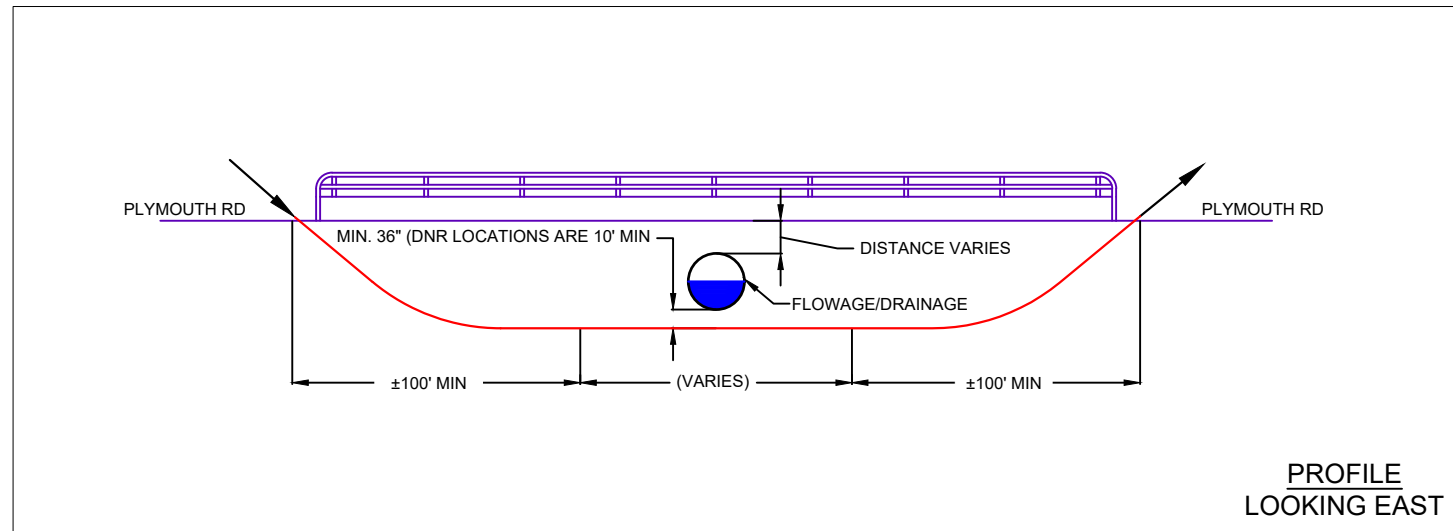
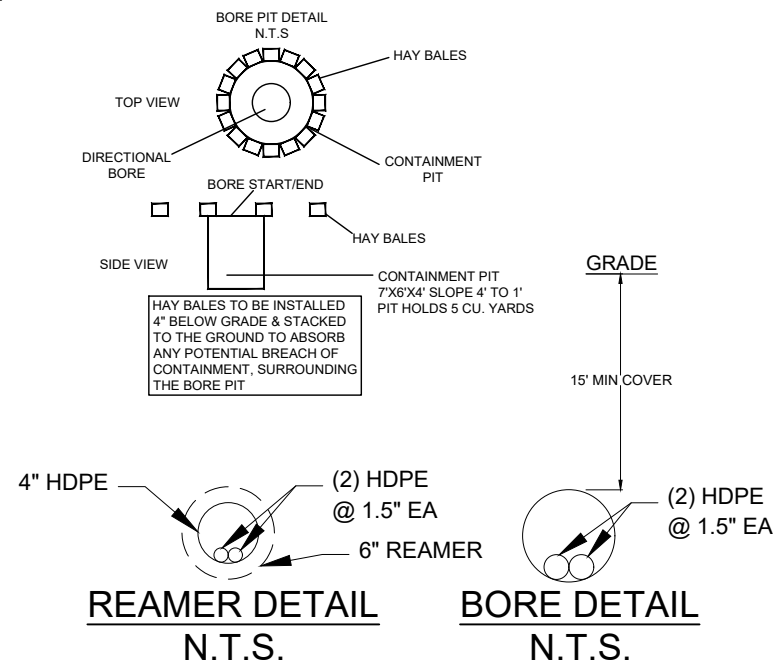
SHEET NUMBER:  
3 of 4



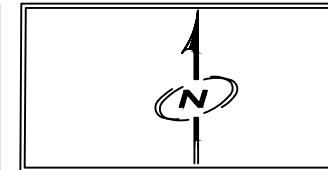
LOCATION SKETCH



PLAN VIEW



PROFILE LOOKING EAST



intrepid

DESIGN AREA:  
MN\_DA403\_WC\_  
PLYMOUTH RD

REV	DATE	DESCRIPTION
1		
2		
3		
4		

PLANS PREPARED BY:  
intrepid  
INTREPID  
11001 W 120TH AVE  
SUITE 305  
BROOMFIELD CO 80021  
844-380-8090

THE INFORMATION CONTAINED IN THIS SET OF DESIGN DOCUMENTS IS PROPRIETARY BY NATURE. ANY USE OR DISCLOSURE TO ANYONE OUTSIDE OF INTREPID FIBER IS PROHIBITED.

DRAWN BY:	DATE:
CHECKED BY:	DATE:
SUBMITTAL NUMBER:	DATE:



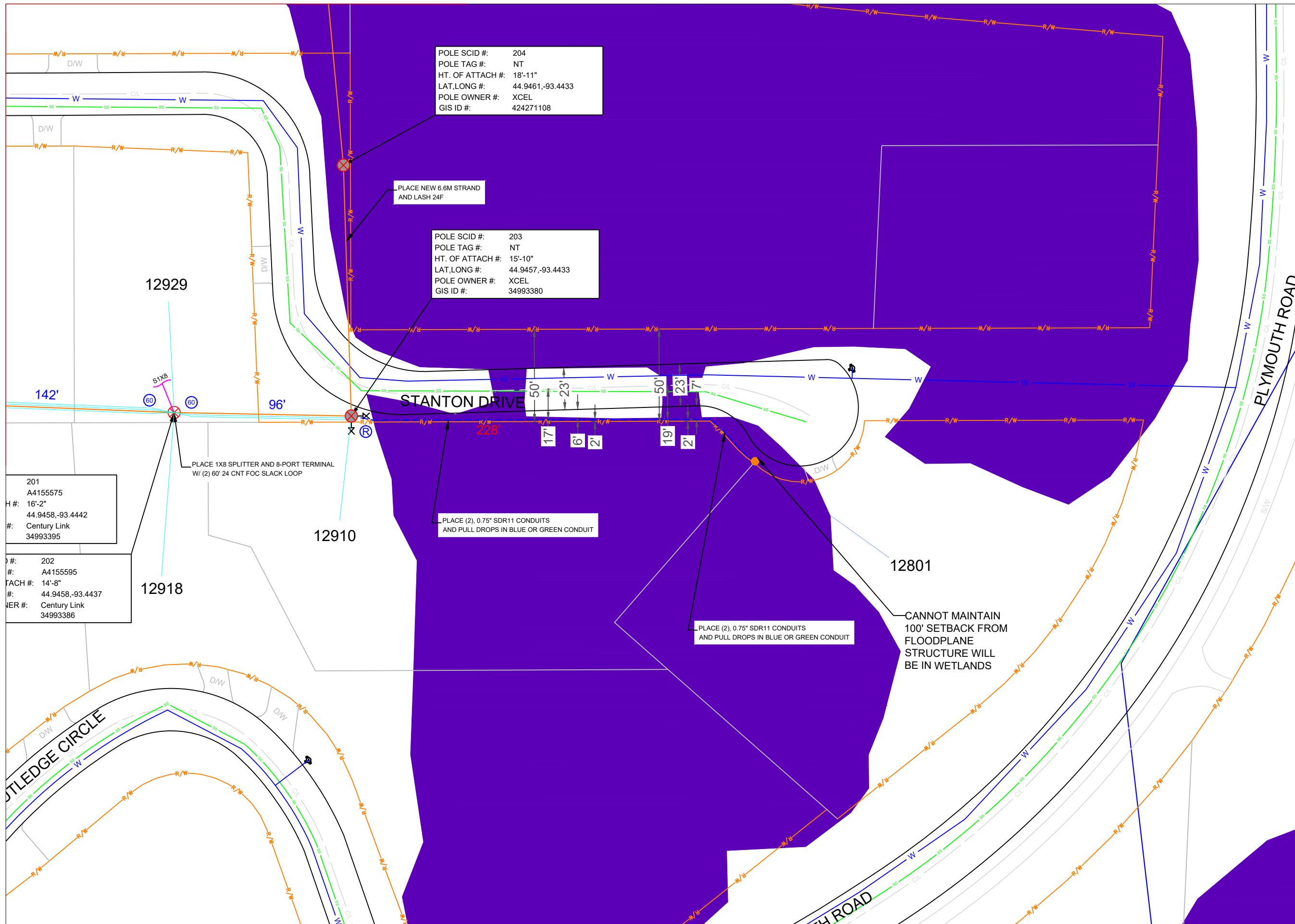
SCALE:  
**SCALE: 1:50**

SHEET NUMBER:  
4 of 4

MATCH TO SHEET 24

MATCH TO SHEET 6

MATCH TO SHEET 4



POLE SCID #: 204  
 POLE TAG #: NT  
 HT. OF ATTACH #: 18'-11"  
 LAT, LONG #: 44.9461, -93.4433  
 POLE OWNER #: XCEL  
 GIS ID #: 424271108

POLE SCID #: 203  
 POLE TAG #: NT  
 HT. OF ATTACH #: 15'-10"  
 LAT, LONG #: 44.9457, -93.4433  
 POLE OWNER #: XCEL  
 GIS ID #: 34993380

201  
 A4155575  
 H #: 16'-2"  
 #: 44.9458, -93.4442  
 #: Century Link  
 34993395

202  
 A4155595  
 H #: 14'-8"  
 #: 44.9458, -93.4437  
 #: Century Link  
 34993386

PLACE 1X8 SPLITTER AND 8-PORT TERMINAL  
 W/ (2) 60' 24 CNT FOC SLACK LOOP

PLACE NEW 6.6M STRAND  
 AND LASH 24F

PLACE (2), 0.75" SDR11 CONDUITS  
 AND PULL DROPS IN BLUE OR GREEN CONDUIT

PLACE (2), 0.75" SDR11 CONDUITS  
 AND PULL DROPS IN BLUE OR GREEN CONDUIT

CANNOT MAINTAIN  
 100' SETBACK FROM  
 FLOODPLANE  
 STRUCTURE WILL  
 BE IN WETLANDS



DESIGN AREA:

MN\_DA403\_WC\_PLYMOUTH RD

REV	DATE	DESCRIPTION
1		
2		
3		
4		

PLANS PREPARED BY:



INTREPID  
 11001 W 120TH AVE  
 SUITE 305  
 BROOMFIELD CO 80021  
 844-380-8090

THE INFORMATION CONTAINED IN THIS SET OF  
 DESIGN DOCUMENTS IS PROPRIETARY BY NATURE.  
 ANY USE OR DISCLOSURE TO ANYONE OUTSIDE  
 OF INTREPID FIBER IS PROHIBITED

DRAWN BY:	DATE:
CHECKED BY:	DATE:
SUBMITTAL NUMBER:	DATE:

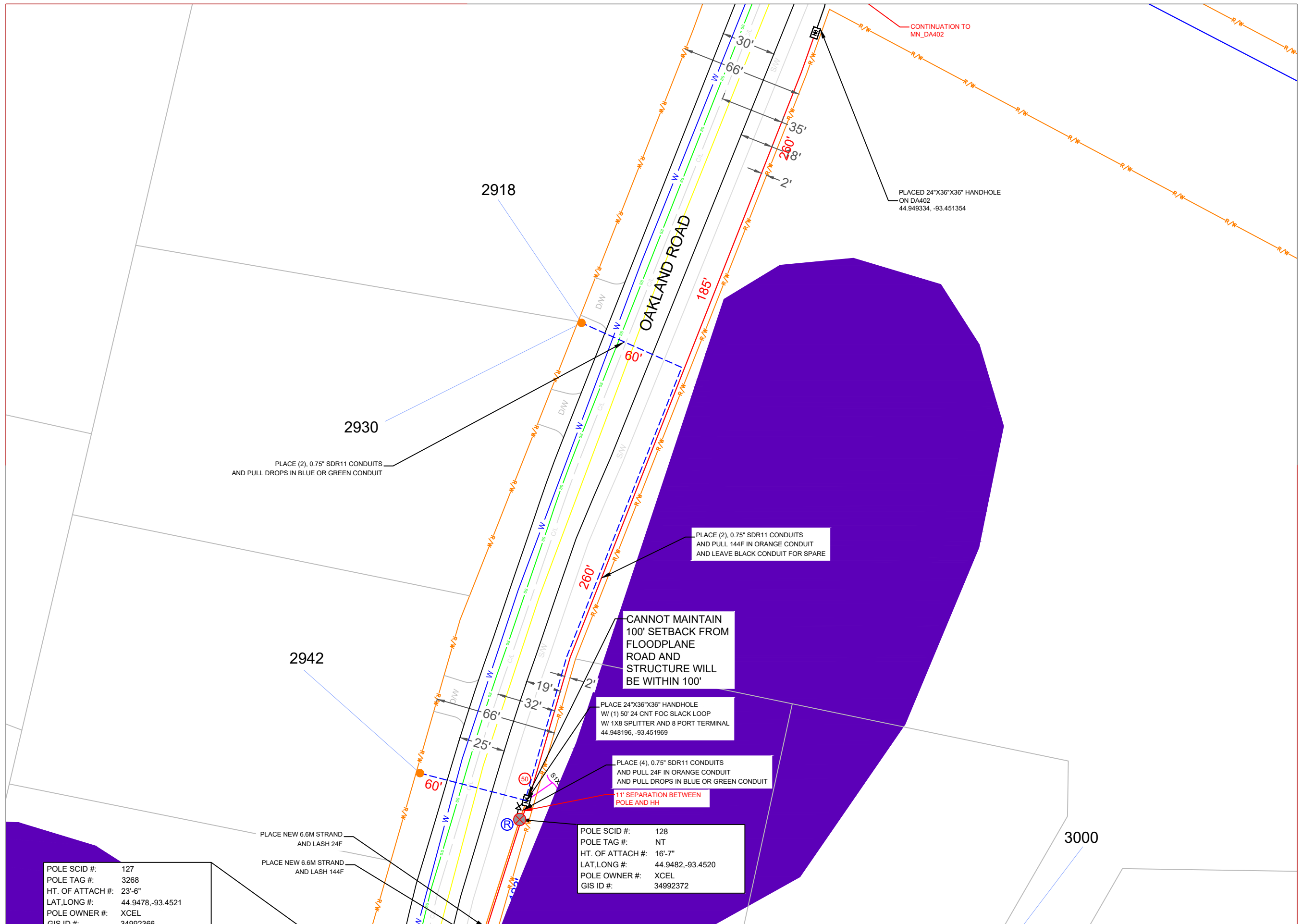
SCALE:  
**SCALE: 1:50**  
 0' 50' 75'

SHEET NUMBER:  
 5 of 4

MATCH TO SHEET 24

MATCH TO SHEET 6

MATCH TO SHEET 4



POLE SCID #: 127  
 POLE TAG #: 3268  
 HT. OF ATTACH #: 23'-6"  
 LAT, LONG #: 44.9478, -93.4521  
 POLE OWNER #: XCEL  
 GIS ID #: 34992366

PLACE NEW 6.6M STRAND  
 AND LASH 24F  
 PLACE NEW 6.6M STRAND  
 AND LASH 144F

POLE SCID #: 128  
 POLE TAG #: NT  
 HT. OF ATTACH #: 16'-7"  
 LAT, LONG #: 44.9482, -93.4520  
 POLE OWNER #: XCEL  
 GIS ID #: 34992372

PLACE 24"X36"X36" HANDHOLE  
 W/ (1) 50' 24 CNT FOC SLACK LOOP  
 W/ 1X8 SPLITTER AND 8 PORT TERMINAL  
 44.948196, -93.451969

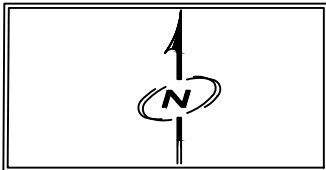
PLACE (4), 0.75" SDR11 CONDUITS  
 AND PULL 24F IN ORANGE CONDUIT  
 AND PULL DROPS IN BLUE OR GREEN CONDUIT  
 11' SEPARATION BETWEEN  
 POLE AND HH

CANNOT MAINTAIN  
 100' SETBACK FROM  
 FLOODPLANE  
 ROAD AND  
 STRUCTURE WILL  
 BE WITHIN 100'

PLACE (2), 0.75" SDR11 CONDUITS  
 AND PULL 144F IN ORANGE CONDUIT  
 AND LEAVE BLACK CONDUIT FOR SPARE


PLACE (2), 0.75" SDR11 CONDUITS  
 AND PULL DROPS IN BLUE OR GREEN CONDUIT

PLACED 24"X36"X36" HANDHOLE  
 ON DA402  
 44.949334, -93.451354



DESIGN AREA:  
 MN\_DA403\_WC\_  
 PLYMOUTH RD


REV	DATE	DESCRIPTION
1		
2		
3		
4		

PLANS PREPARED BY:  
  
 INTREPID  
 11001 W 120TH AVE  
 SUITE 305  
 BROOMFIELD CO 80021  
 844-380-8070

THE INFORMATION CONTAINED IN THIS SET OF  
 DESIGN DOCUMENTS IS PROPRIETARY BY NATURE.  
 ANY USE OR DISCLOSURE TO ANYONE OUTSIDE  
 OF INTREPID FIBER IS PROHIBITED

DRAWN BY:	DATE:
CHECKED BY:	DATE:
SUBMITTAL NUMBER:	DATE:



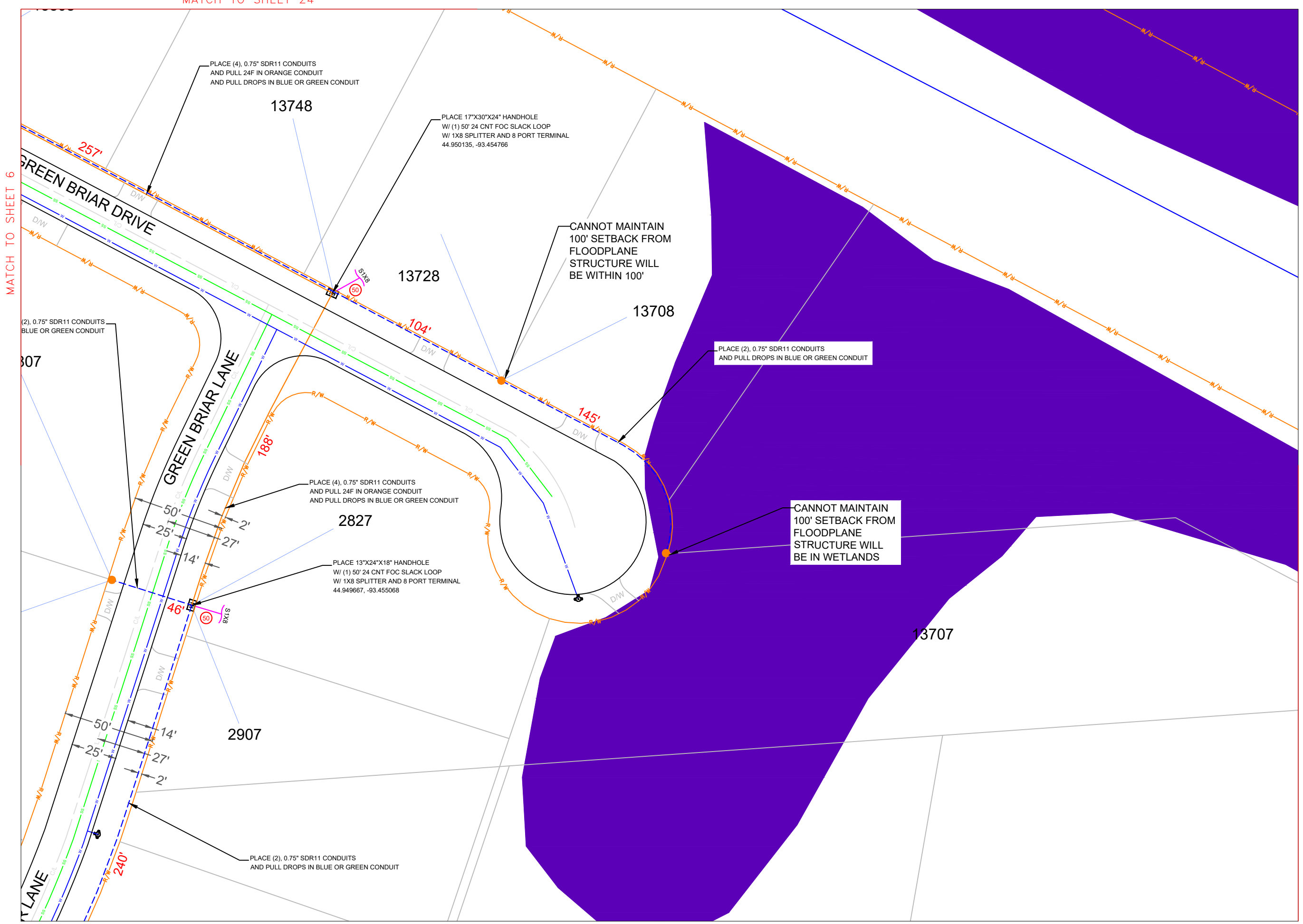
SCALE:  
**SCALE: 1:50**  


SHEET NUMBER:  
 6 of 4

MATCH TO SHEET 24

MATCH TO SHEET 6

MATCH TO SHEET 4



PLACE (4), 0.75" SDR11 CONDUITS AND PULL 24F IN ORANGE CONDUIT AND PULL DROPS IN BLUE OR GREEN CONDUIT

13748

PLACE 17"X30"X24" HANDHOLE W/ (1) 50' 24 CNT FOC SLACK LOOP W/ 1X8 SPLITTER AND 8 PORT TERMINAL 44.950135, -93.454766

13728

CANNOT MAINTAIN 100' SETBACK FROM FLOODPLANE STRUCTURE WILL BE WITHIN 100'

13708

PLACE (2), 0.75" SDR11 CONDUITS AND PULL DROPS IN BLUE OR GREEN CONDUIT

(2), 0.75" SDR11 CONDUITS BLUE OR GREEN CONDUIT

307

GREEN BRIAR LANE

PLACE (4), 0.75" SDR11 CONDUITS AND PULL 24F IN ORANGE CONDUIT AND PULL DROPS IN BLUE OR GREEN CONDUIT

2827

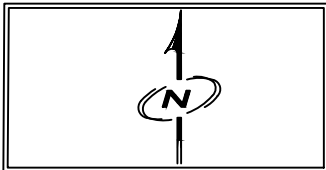
PLACE 13"X24"X18" HANDHOLE W/ (1) 50' 24 CNT FOC SLACK LOOP W/ 1X8 SPLITTER AND 8 PORT TERMINAL 44.949667, -93.455068

CANNOT MAINTAIN 100' SETBACK FROM FLOODPLANE STRUCTURE WILL BE IN WETLANDS

13707

2907

PLACE (2), 0.75" SDR11 CONDUITS AND PULL DROPS IN BLUE OR GREEN CONDUIT



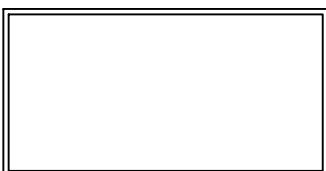
DESIGN AREA:  
MN\_DA403\_WC\_PLYMOUTH RD

REV	DATE	DESCRIPTION
1		
2		
3		
4		

PLANS PREPARED BY:  
**intrepid**  
INTREPID  
11001 W 120TH AVE  
SUITE 305  
BROOMFIELD CO 80021  
844-380-8070

THE INFORMATION CONTAINED IN THIS SET OF DESIGN DOCUMENTS IS PROPRIETARY BY NATURE. ANY USE OR DISCLOSURE TO ANYONE OUTSIDE OF INTREPID FIBER IS PROHIBITED.

DRAWN BY:	DATE:
CHECKED BY:	DATE:
SUBMITTAL NUMBER:	DATE:



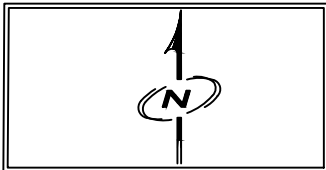
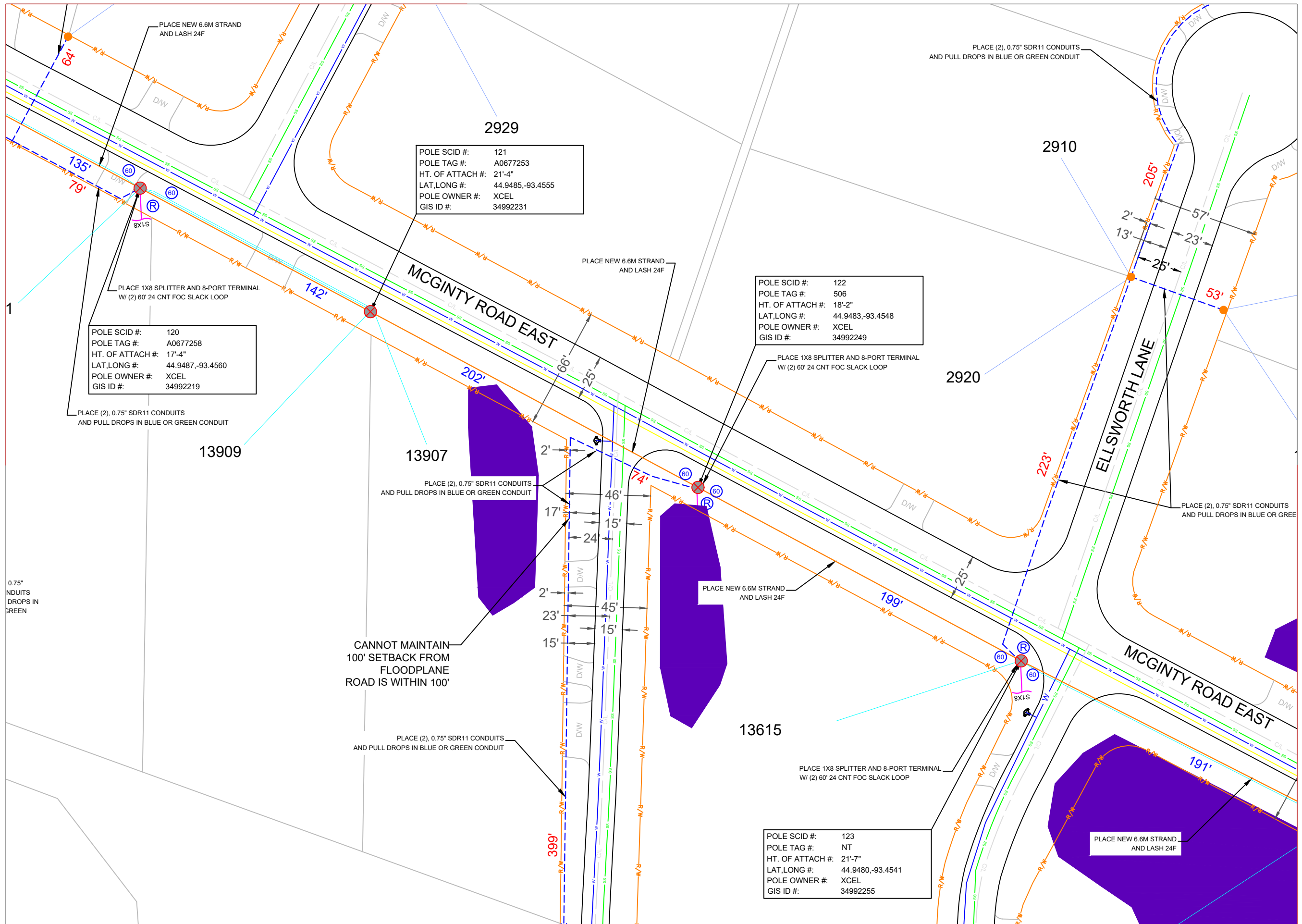
SCALE:  
**SCALE: 1:50**  
0' 50' 75'

SHEET NUMBER:  
7 of 4

MATCH TO SHEET 24


MATCH TO SHEET 6

MATCH TO SHEET 4



DESIGN AREA:  
 MN\_DA403\_WC\_  
 PLYMOUTH RD


REV	DATE	DESCRIPTION
1		
2		
3		
4		

PLANS PREPARED BY:  
  
 INTREPID  
 11001 W 120TH AVE  
 SUITE 305  
 BROOMFIELD CO 80021  
 844-380-8070

THE INFORMATION CONTAINED IN THIS SET OF DESIGN DOCUMENTS IS PROPRIETARY BY NATURE. ANY USE OR DISCLOSURE TO ANYONE OUTSIDE OF INTREPID FIBER IS PROHIBITED.

DRAWN BY:	DATE:
CHECKED BY:	DATE:
SUBMITAL NUMBER:	DATE:



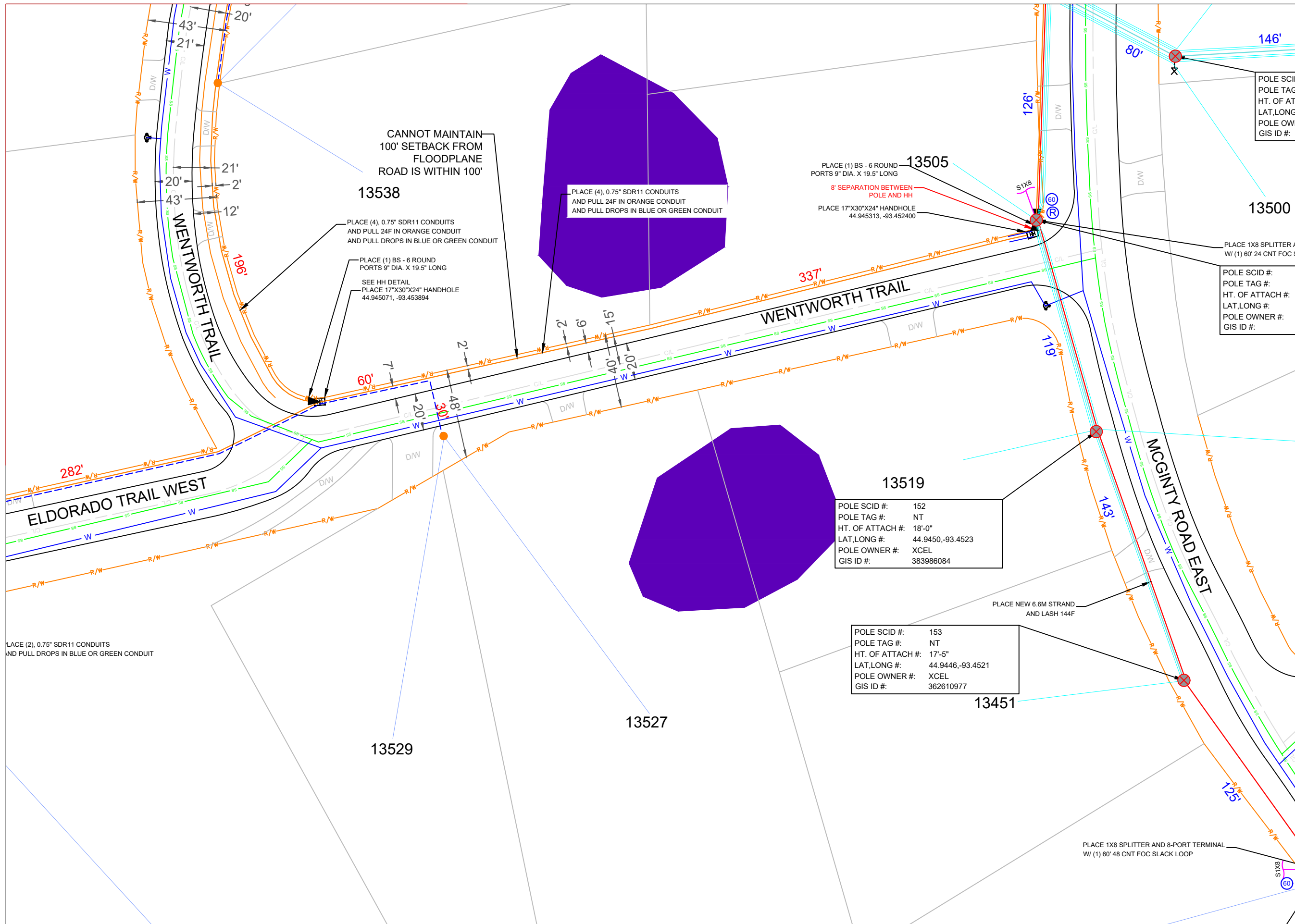
SCALE:  
**SCALE: 1:50**  


SHEET NUMBER:  
 8 of 4

MATCH TO SHEET 24

MATCH TO SHEET 6

MATCH TO SHEET 4



CANNOT MAINTAIN  
100' SETBACK FROM  
FLOODPLANE  
ROAD IS WITHIN 100'

13538

PLACE (4), 0.75" SDR11 CONDUITS  
AND PULL 24F IN ORANGE CONDUIT  
AND PULL DROPS IN BLUE OR GREEN CONDUIT

PLACE (1) BS - 6 ROUND  
PORTS 9" DIA. X 19.5" LONG

SEE HH DETAIL  
PLACE 17"X30"X24" HANDHOLE  
44.945071, -93.453894

PLACE (4), 0.75" SDR11 CONDUITS  
AND PULL 24F IN ORANGE CONDUIT  
AND PULL DROPS IN BLUE OR GREEN CONDUIT

PLACE (1) BS - 6 ROUND  
PORTS 9" DIA. X 19.5" LONG

8" SEPARATION BETWEEN  
POLE AND HH

PLACE 17"X30"X24" HANDHOLE  
44.945313, -93.452400

POLE SCID #:  
POLE TAG #:  
HT. OF ATTACH #:  
LAT, LONG #:  
POLE OWNER #:  
GIS ID #:

PLACE 1X8 SPLITTER A  
W/ (1) 60' 24 CNT FOC S

POLE SCID #:  
POLE TAG #:  
HT. OF ATTACH #:  
LAT, LONG #:  
POLE OWNER #:  
GIS ID #:

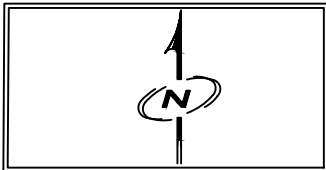
POLE SCID #: 152  
POLE TAG #: NT  
HT. OF ATTACH #: 18'-0"  
LAT, LONG #: 44.9450, -93.4523  
POLE OWNER #: XCEL  
GIS ID #: 383986084

POLE SCID #: 153  
POLE TAG #: NT  
HT. OF ATTACH #: 17'-5"  
LAT, LONG #: 44.9446, -93.4521  
POLE OWNER #: XCEL  
GIS ID #: 362610977

PLACE NEW 6.6M STRAND  
AND LASH 144F

PLACE 1X8 SPLITTER AND 8-PORT TERMINAL  
W/ (1) 60' 48 CNT FOC SLACK LOOP

PLACE (2), 0.75" SDR11 CONDUITS  
AND PULL DROPS IN BLUE OR GREEN CONDUIT



DESIGN AREA:  
MN\_DA403\_WC\_  
PLYMOUTH RD

REV	DATE	DESCRIPTION
1		
2		
3		
4		

PLANS PREPARED BY:  
**intrepid**  
INTREPID  
11001 W 120TH AVE  
SUITE 305  
BROOMFIELD CO 80021  
844-380-8070

THE INFORMATION CONTAINED IN THIS SET OF  
DESIGN DOCUMENTS IS PROPRIETARY BY NATURE.  
ANY USE OR DISCLOSURE TO ANYONE OUTSIDE  
OF INTREPID FIBER IS PROHIBITED

DRAWN BY:	DATE:
CHECKED BY:	DATE:
SUBMITTAL NUMBER:	DATE:



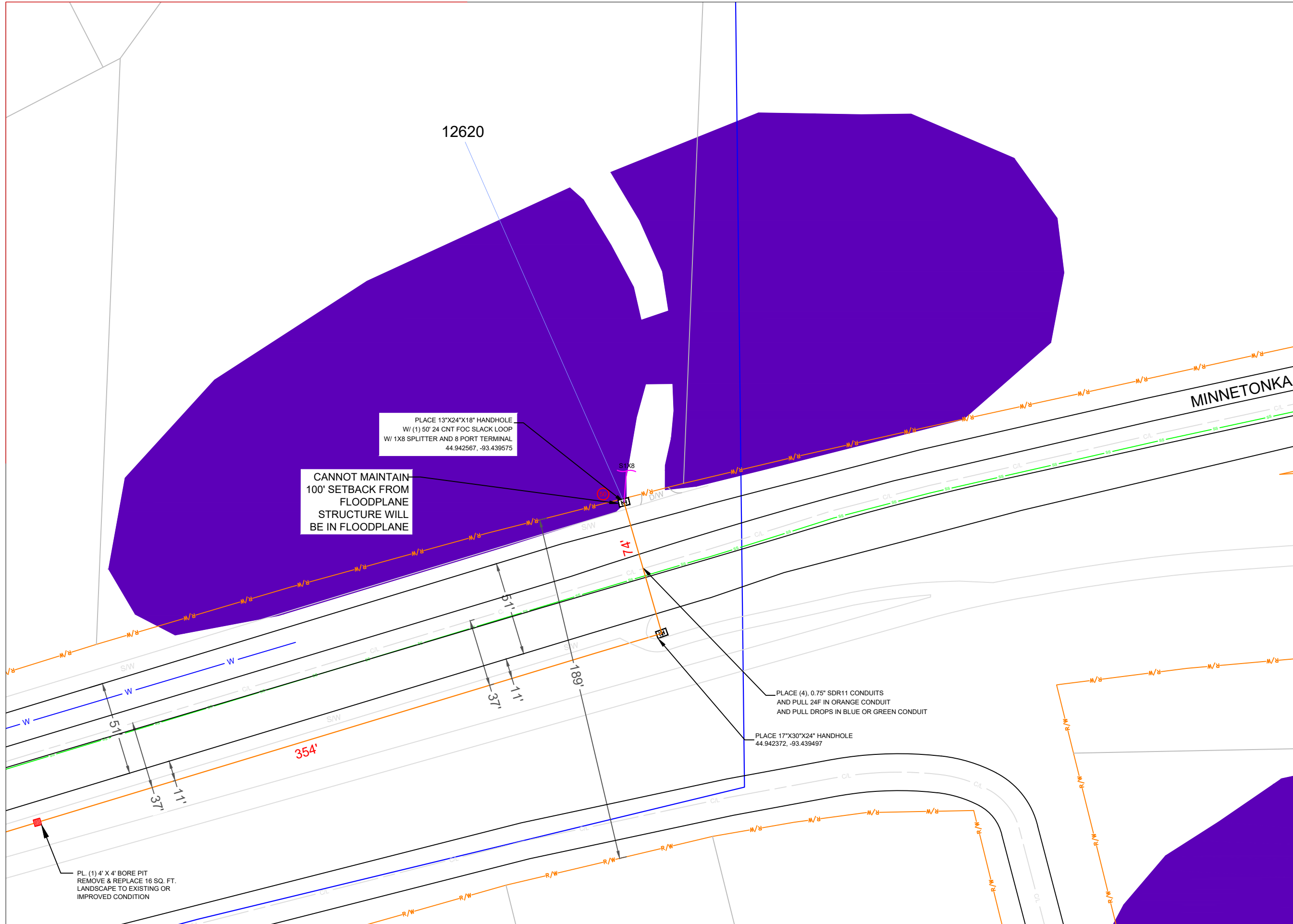
SCALE:  
**SCALE: 1:50**  
0' 50' 75'

SHEET NUMBER:  
9 of 4



MATCH TO SHEET 24

MATCH TO SHEET 6



PLACE 13"X24"X18" HANDHOLE  
 W/ (1) 50' 24 CNT FOC SLACK LOOP  
 W/ 1X8 SPLITTER AND 8 PORT TERMINAL  
 44.942567, -93.439575

CANNOT MAINTAIN  
 100' SETBACK FROM  
 FLOODPLANE  
 STRUCTURE WILL  
 BE IN FLOODPLANE

PLACE (4), 0.75" SDR11 CONDUITS  
 AND PULL 24F IN ORANGE CONDUIT  
 AND PULL DROPS IN BLUE OR GREEN CONDUIT

PLACE 17"X30"X24" HANDHOLE  
 44.942372, -93.439497

PL. (1) 4' X 4' BORE PIT  
 REMOVE & REPLACE 16 SQ. FT.  
 LANDSCAPE TO EXISTING OR  
 IMPROVED CONDITION



**intrepid**

DESIGN AREA:

MN\_DA403\_WC\_  
 PLYMOUTH RD

REV	DATE	DESCRIPTION
1		
2		
3		
4		

PLANS PREPARED BY:

**intrepid**

INTREPID  
 11001 W 120TH AVE  
 SUITE 305  
 BROOMFIELD CO 80021  
 844-380-8070

THE INFORMATION CONTAINED IN THIS SET OF  
 DESIGN DOCUMENTS IS PROPRIETARY BY NATURE.  
 ANY USE OR DISCLOSURE TO ANYONE OUTSIDE  
 OF INTREPID FIBER IS PROHIBITED

DRAWN BY:	DATE:
CHECKED BY:	DATE:
SUBMITTAL NUMBER:	DATE:

SCALE:

**SCALE: 1:50**



SHEET NUMBER:

11 of 4

MATCH TO SHEET 4