

LLD MN_DA405_WC_CEDAR CROSSING

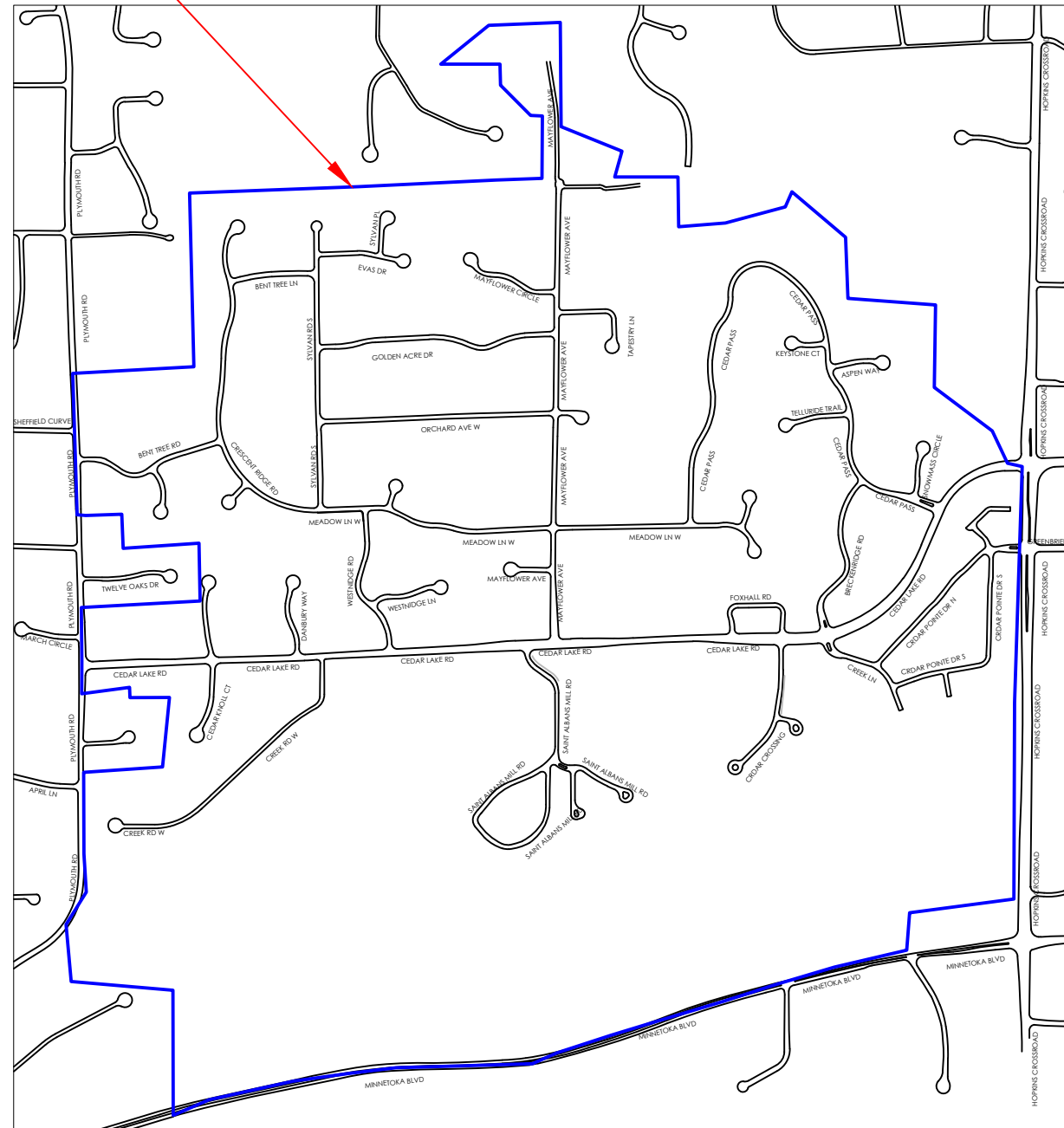
CITY OF MINNETONKA, MN
 PLACE DISTRIBUTED SPLIT FIBER OPTIC FACILITIES WITHIN
 THE PUBLIC RIGHT OF WAY AND PUBLIC UTILITY EASEMENTS.

BILL OF MATERIAL

DESCRIPTION	UNIT	QTY
BORE	L. FT.	371
TRENCH	L. FT.	-
HAND DIG	L. FT.	-
PL. (4) - 0.75" SDR11 CONDUIT	L. FT.	1484
PL. (2) - 0.75" SDR11 CONDUIT (TRUNK/BACKBONE)	L. FT.	-
PL. (2) - 0.75" SDR11 CONDUIT (DROPS)	L. FT.	-
PL. (N) 30"x48"x36" HANDHOLE	EACH	-
PL. (N) 24"x36"x36" HANDHOLE	EACH	-
PL. (N) 17"x30"x24" HANDHOLE	EACH	2
PL. (N) 13"x24"x18" HANDHOLE	EACH	-
PL. (N) 11" ROUND FLOWER POT	EACH	-
PL. (N) BS - 6 ROUND PORTS 9" DIA. X 19.5" LONG	EACH	-
PL. (N) 1X8 SPLITTER	EACH	-
PL. (N) 8 PORT TERMINAL	EACH	-
PL. (N) 6.6M STRAND	L. FT.	-
PL. (N) TRACERWIRE	L. FT.	371
PL. (N) UNARMORED 24 CNT FOC	L. FT.	371
PL. (N) ARMORED 24 CNT FOC	L. FT.	-
PL. (N) UNARMORED 48 CNT FOC	L. FT.	-
PL. (N) UNARMORED 96 CNT FOC	L. FT.	-
PL. (N) ARMORED 96 CNT FOC	L. FT.	-
PL. (N) UNARMORED 144 CNT FOC	L. FT.	-
PL. (N) ARMORED 144 CNT FOC	L. FT.	-
PL. (N) UNARMORED 288 CNT FOC	L. FT.	-
PL. (N) 5/8" DOUBLE EYE ANCHOR	EACH	-
PL. (N) DOWN GUY	EACH	-
PL. (N) FOC AERIAL SLACK LOOP	L. FT.	-
PL. (N) FOC BURIED SLACK LOOP	L. FT.	100
PL. (N) RISER FOC	L. FT.	-
POLE(S)	EACH	-

DA405

LOCATION MAP



LEGEND

	SPLITTER TERMINAL 1X4
	SPLITTER TERMINAL 1X8
	HANDHOLE 30X48 OR 24X36
	HANDHOLE 17X30 OR 13X24
	FLOWER POT (11" Round)
	4' X 4' BORE PIT
	CENTURY LINK POLE
	XCEL POLE
	RISER
	0.75" HDPE CONDUIT
	0.75" HDPE CONDUIT
	0.75" HDPE CONDUIT
	0.75" HDPE CONDUIT
	24 CT FIBER
	48 CT FIBER
	96 CT FIBER
	144 CT FIBER
	288 CT FIBER
	AERIAL STRAND
	AERIAL FIBER DROP
	BURIED FIBER DROP
	DOWN GUY/ANCHOR
	MAN HOLE
	FIRE HYDRANT
	VALVE (WTR, GAS, ETC)
	MISC/UNK STRUCTURE
	EXISTING WATER
	EXISTING COMMUNICATION
	EXISTING GAS
	EXISTING ELECTRICITY
	EXISTING SEWER
	OLT CABINET
	DA BOUNDARY

DRAWING PREPARED FOR:



MN_DA405_WC_CEDAR
 CROSSING
 DRAWING - FTH

CITY/COUNTY:

CITY OF MINNETONKA
 HENNEPIN COUNTY



Know what's below.
 Call before you dig.

EMERGENCY CONTACTS:

GAS:

PWR:

CATV:

CATV:

WATER:

DRAWING COPY VERSION:

LLD MN_DA405
 VERSION 1.0

DRAWING PREPARED BY:



INTREPID
 11001 W 120TH AVE
 SUITE 305
 BROOMFIELD CO 80021
 844-380-8090

REV#	DESC.	ENG.	DATE

FIELD ENG.	CAD	DESIGN

FILE NAME:
MN_DA405.DWG

COVER SHEET

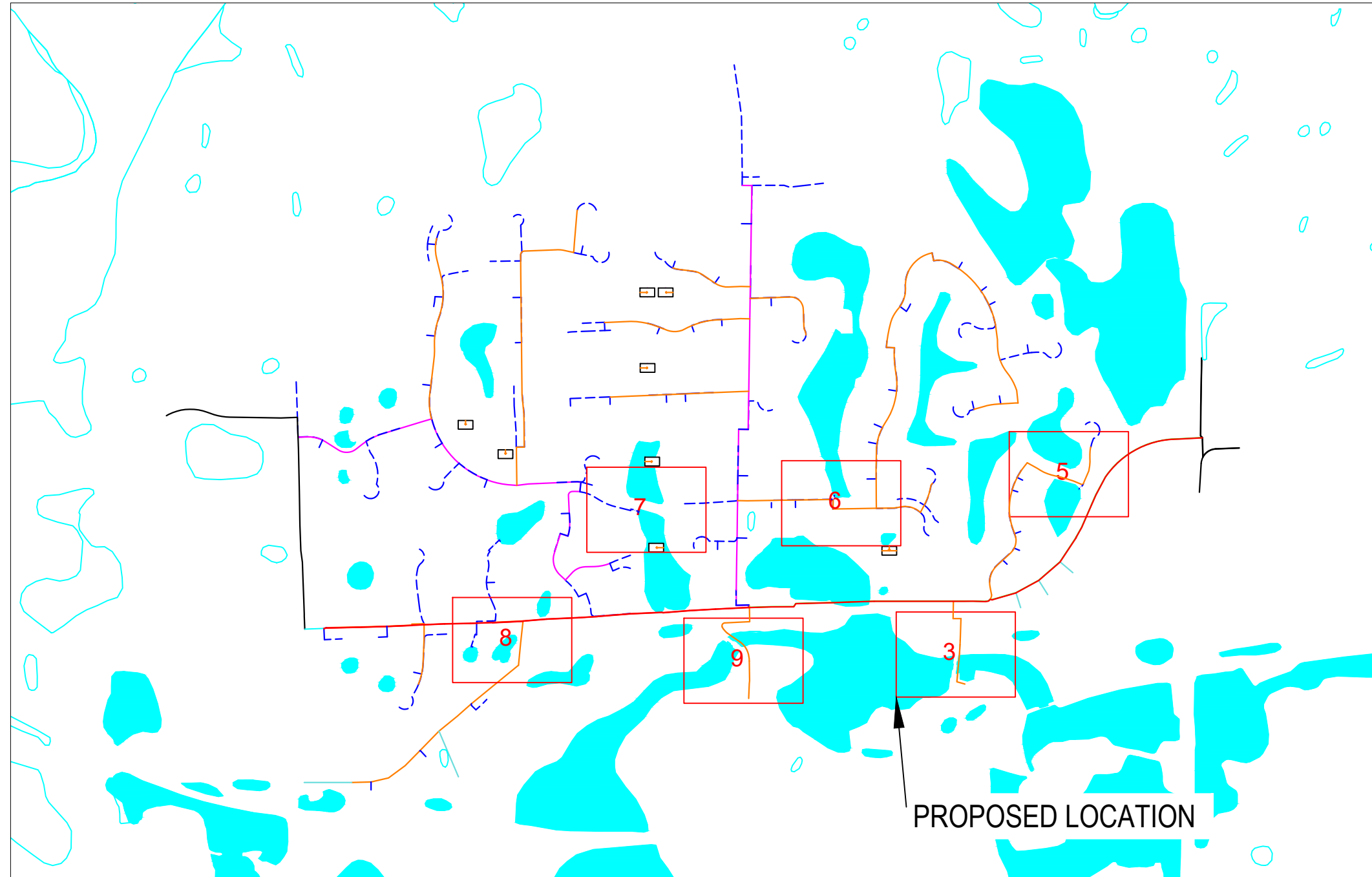
GENERAL NOTES

- REFER TO POLE PERMIT APPLICATION SPREADSHEETS FOR ACTUAL ATTACHMENT HEIGHTS
- EXISTING AERIAL UTILITIES OMITTED FOR PRINT CLARITY

INDEX

COVER	COVER SHEET / LEGEND
KEY	KEYMAP
3-5	LLD DESIGN

KEY MAP



DESIGN AREA:

MN_DA405_WC_ST.
ALBANS MILL RD

REV	DATE	DESCRIPTION
1		
2		
3		
4		

PLANS PREPARED BY:



INTREPID
11001 W 120TH AVE
SUITE 305
BROOMFIELD CO 80021
844-380-8090

THE INFORMATION CONTAINED IN THIS SET OF
DESIGN DOCUMENTS IS PROPRIETARY BY NATURE.
ANY USE OR DISCLOSURE TO ANYONE OUTSIDE
OF INTREPID FIBER IS PROHIBITED.

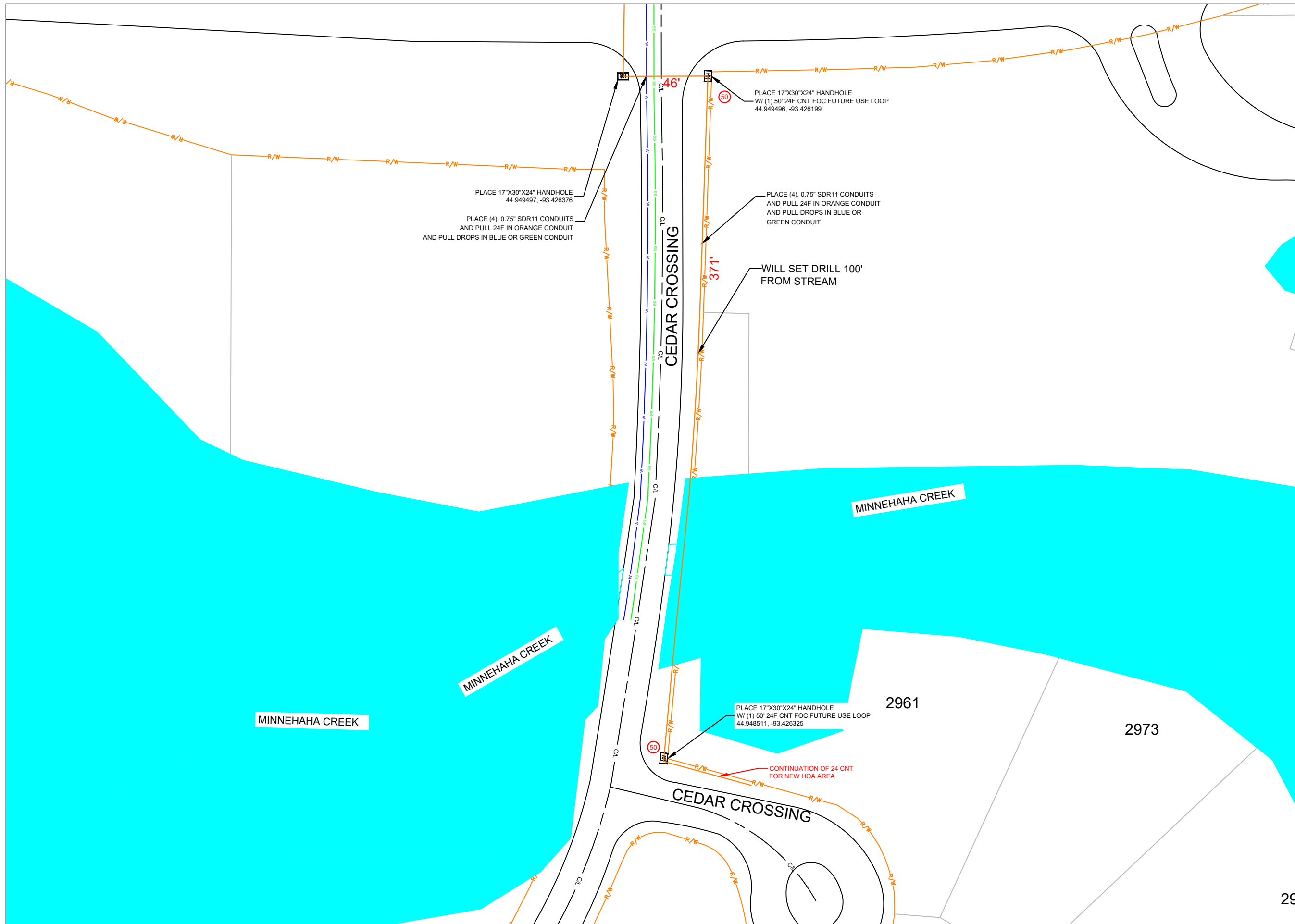
DRAWN BY:	DATE:
CHECKED BY:	DATE:
SUBMITTAL NUMBER:	DATE:

SCALE:

NOT TO SCALE


SHEET NUMBER:

KEY LOCATION



DESIGN AREA:
 MN_DA405_WC_CEDAR
 CROSSING


REV	DATE	DESCRIPTION
1		
2		
3		
4		

PLANS PREPARED BY:

 INTREPID
 11001 W 120TH AVE
 SUITE 305
 BROOMFIELD CO 80021
 844-380-8070

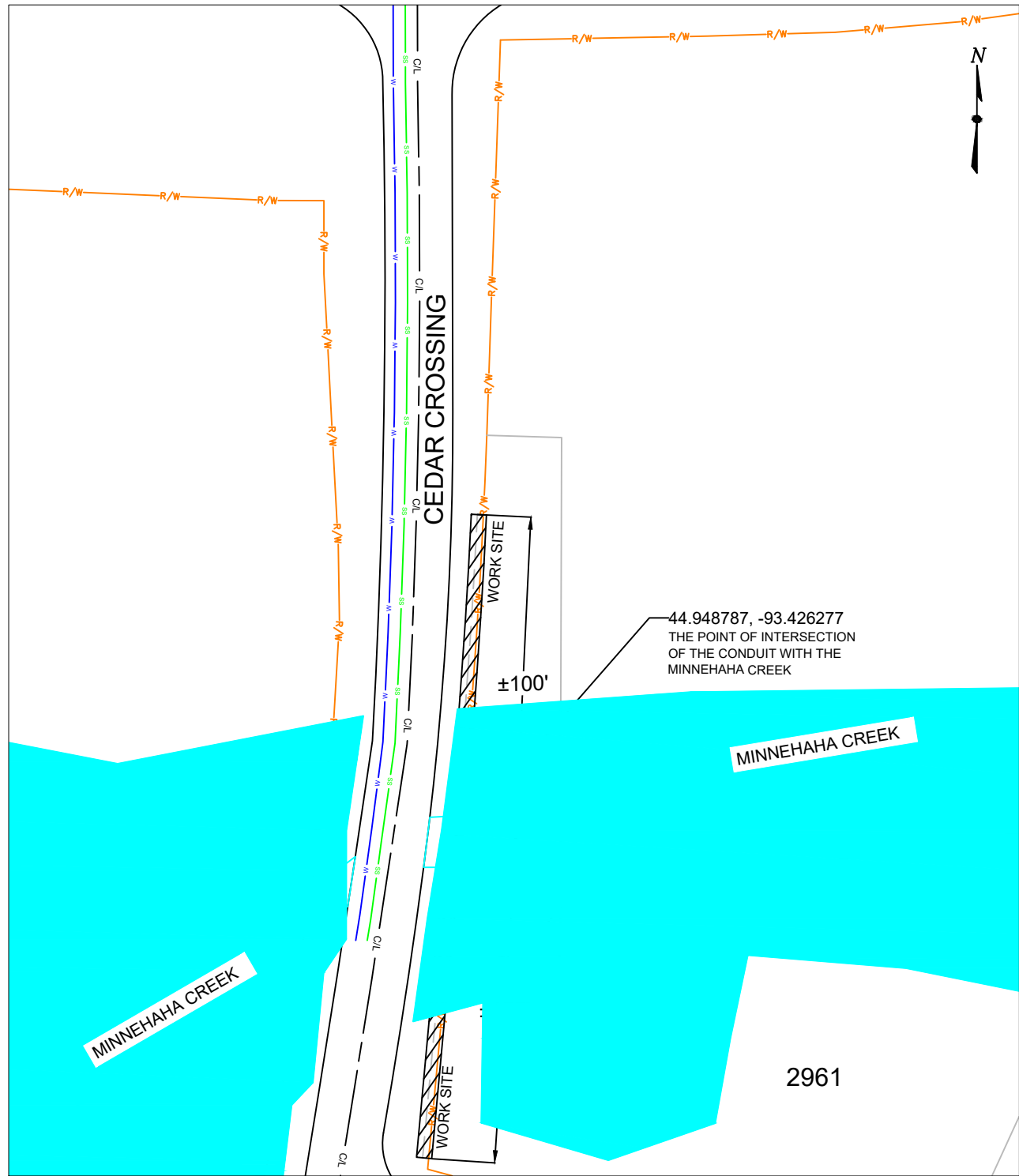
THE INFORMATION CONTAINED IN THIS SET OF
 DESIGN DOCUMENTS IS PROPRIETARY BY NATURE.
 ANY USE OR DISCLOSURE TO ANYONE OUTSIDE
 OF INTREPID FIBER IS PROHIBITED

DRAWN BY:	DATE:
CHECKED BY:	DATE:
SUBMITTAL NUMBER:	DATE:

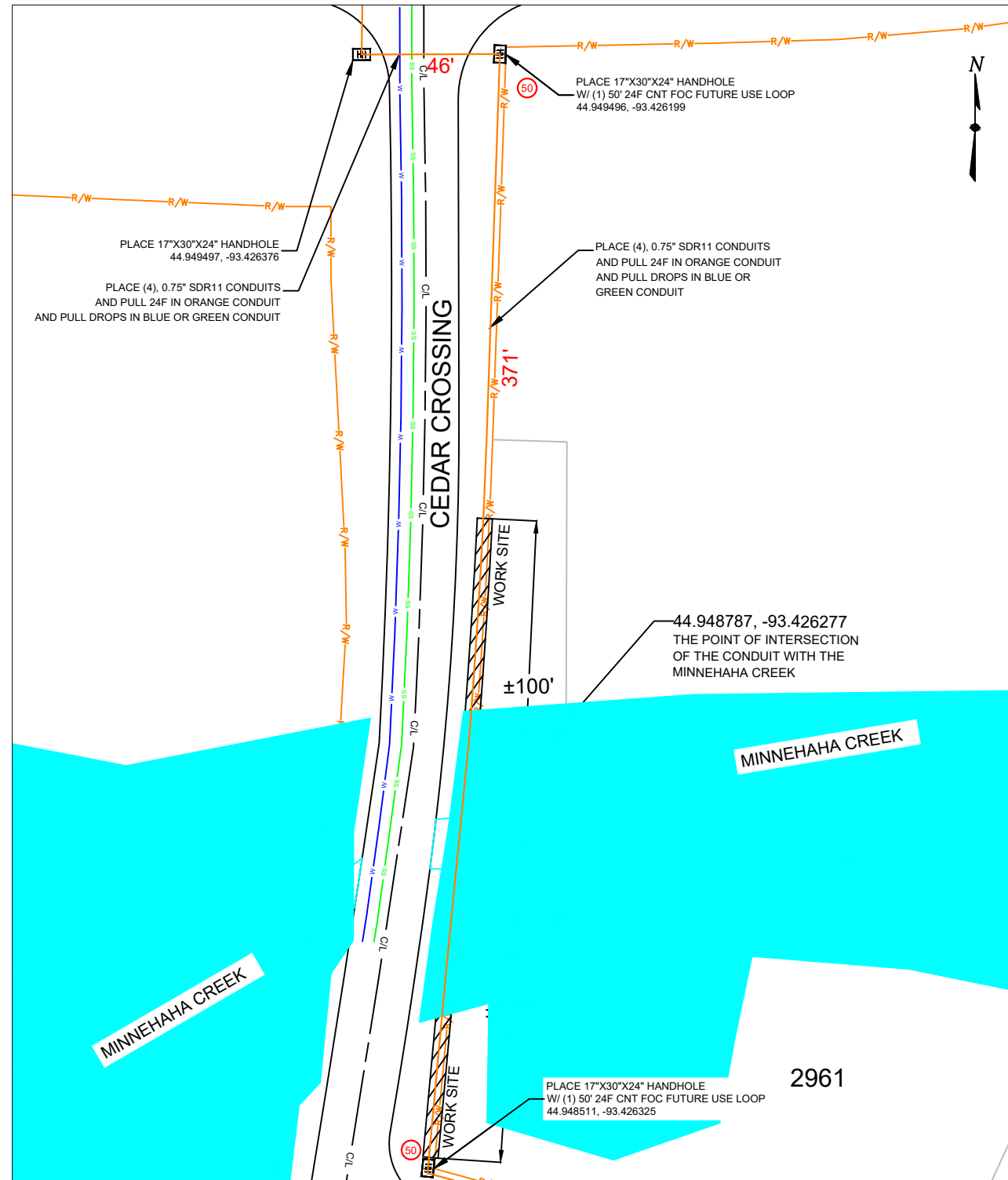


SCALE:
SCALE: 1:50


SHEET NUMBER:
 3 of 11



LOCATION SKETCH



PLAN VIEW



intrepid

DESIGN AREA:

MN_DA405_WC_CEDAR CROSSING

REV	DATE	DESCRIPTION
1		
2		
3		
4		

PLANS PREPARED BY:

intrepid

INTREPID
11001 W 120TH AVE
SUITE 305
BROOMFIELD CO 80021
844-380-8090

THE INFORMATION CONTAINED IN THIS SET OF DESIGN DOCUMENTS IS PROPRIETARY BY NATURE. ANY USE OR DISCLOSURE TO ANYONE OUTSIDE OF INTREPID FIBER IS PROHIBITED.

DRAWN BY:	DATE:
CHECKED BY:	DATE:
SUBMITTAL NUMBER:	DATE:

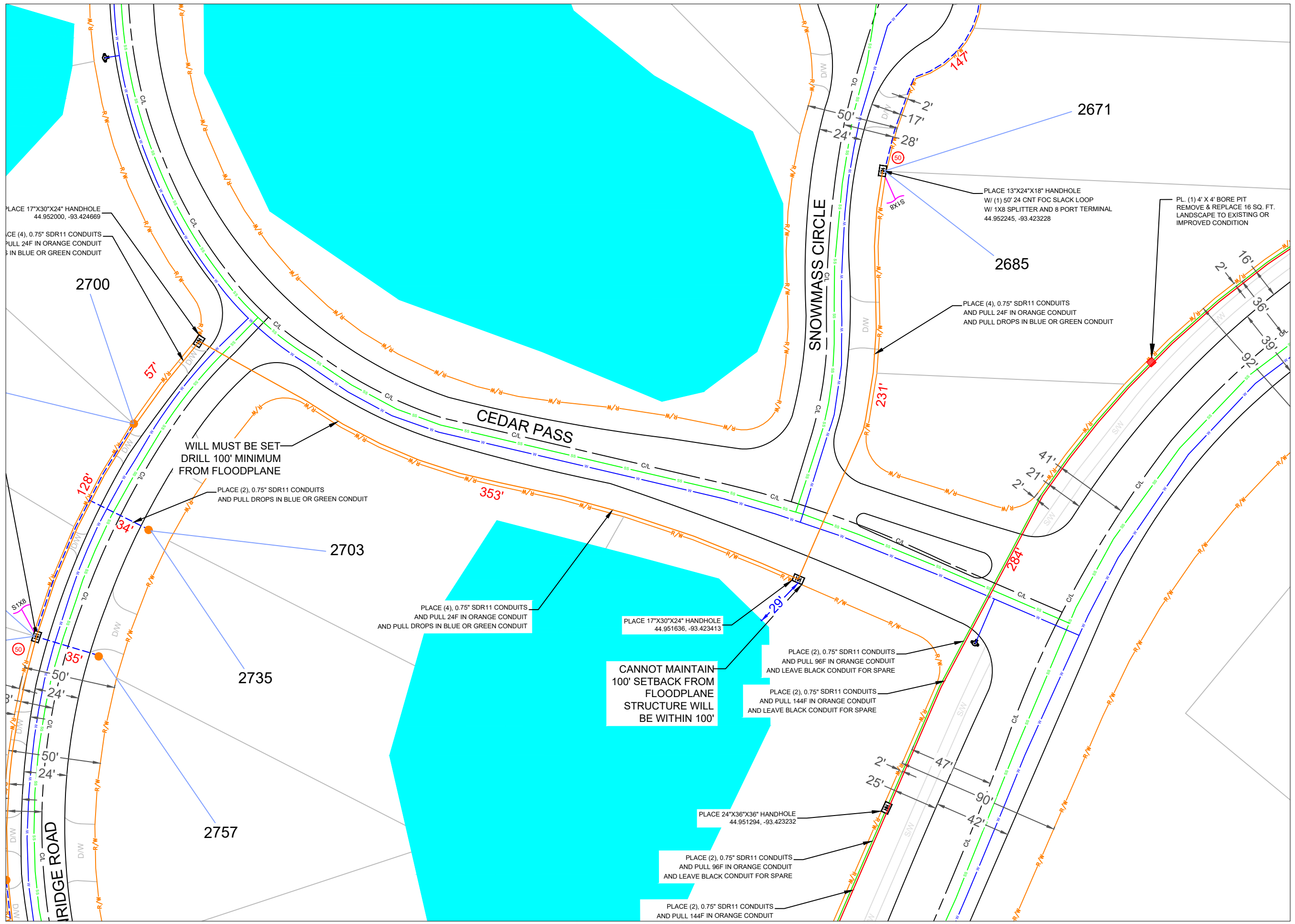
SCALE:

SCALE: 1:50



SHEET NUMBER:

4 of 11



DESIGN AREA:
MN_DA405_WC_CEDAR
CROSSING

REV	DATE	DESCRIPTION
1		
2		
3		
4		

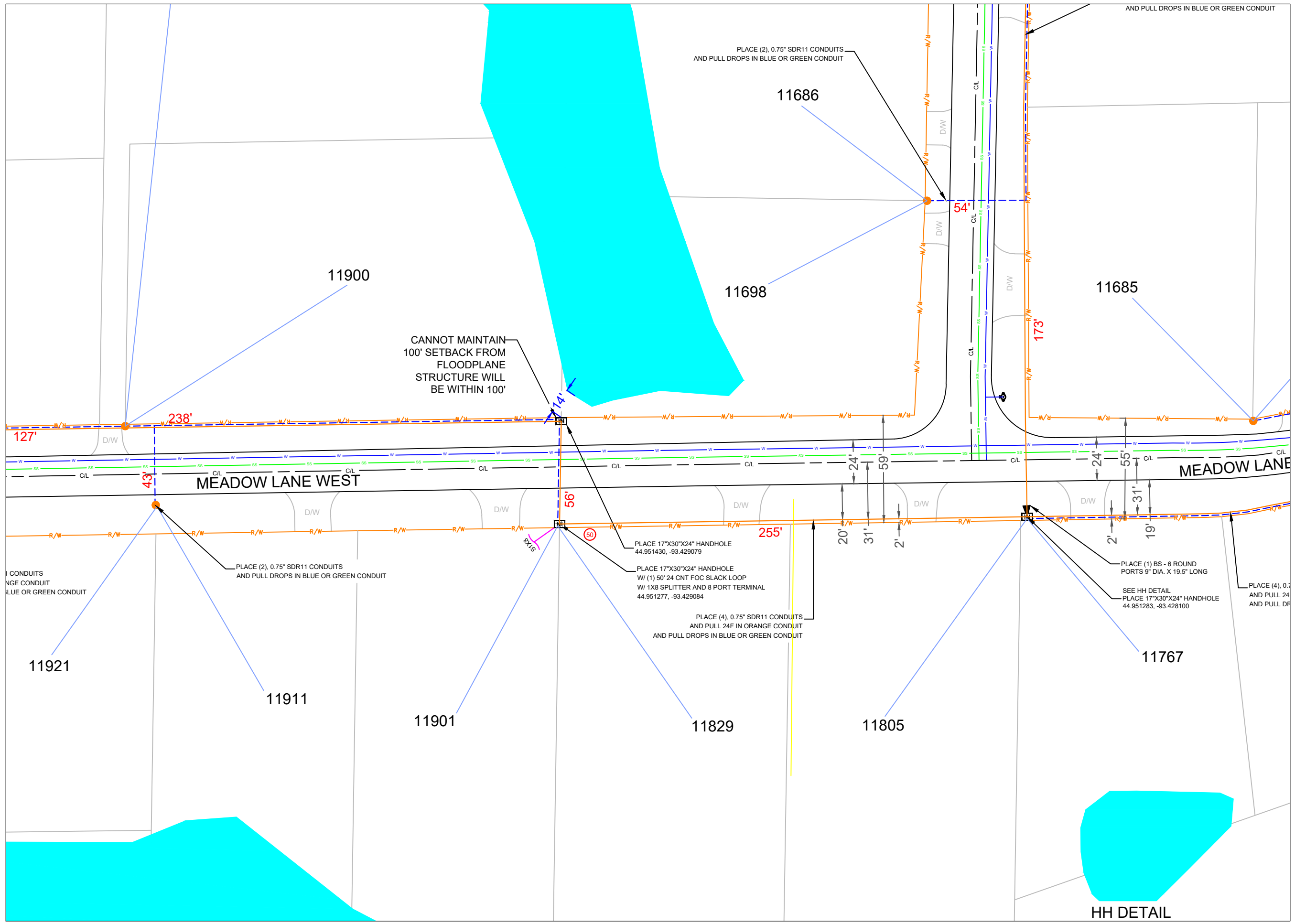
PLANS PREPARED BY:
intrepid
INTREPID
11001 W 120TH AVE
SUITE 305
BROOMFIELD CO 80021
844-380-8090

THE INFORMATION CONTAINED IN THIS SET OF DESIGN DOCUMENTS IS PROPRIETARY BY NATURE. ANY USE OR DISCLOSURE TO ANYONE OUTSIDE OF INTREPID FIBER IS PROHIBITED.

DRAWN BY:	DATE:
CHECKED BY:	DATE:
SUBMITTAL NUMBER:	DATE:

SCALE:
SCALE: 1:50
0' 50' 75'

SHEET NUMBER:
5 of 11



intrepid

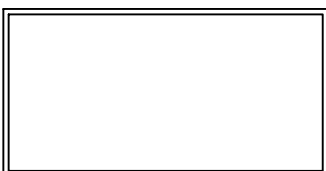
DESIGN AREA:
MN_DA405_WC_CEDAR
CROSSING

REV	DATE	DESCRIPTION
1		
2		
3		
4		

PLANS PREPARED BY:
intrepid
INTREPID
11001 W 120TH AVE
SUITE 305
BROOMFIELD CO 80021
844-380-8090

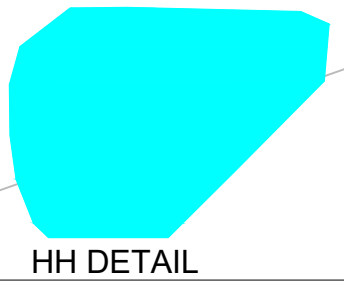
THE INFORMATION CONTAINED IN THIS SET OF DESIGN DOCUMENTS IS PROPRIETARY BY NATURE. ANY USE OR DISCLOSURE TO ANYONE OUTSIDE OF INTREPID FIBER IS PROHIBITED.

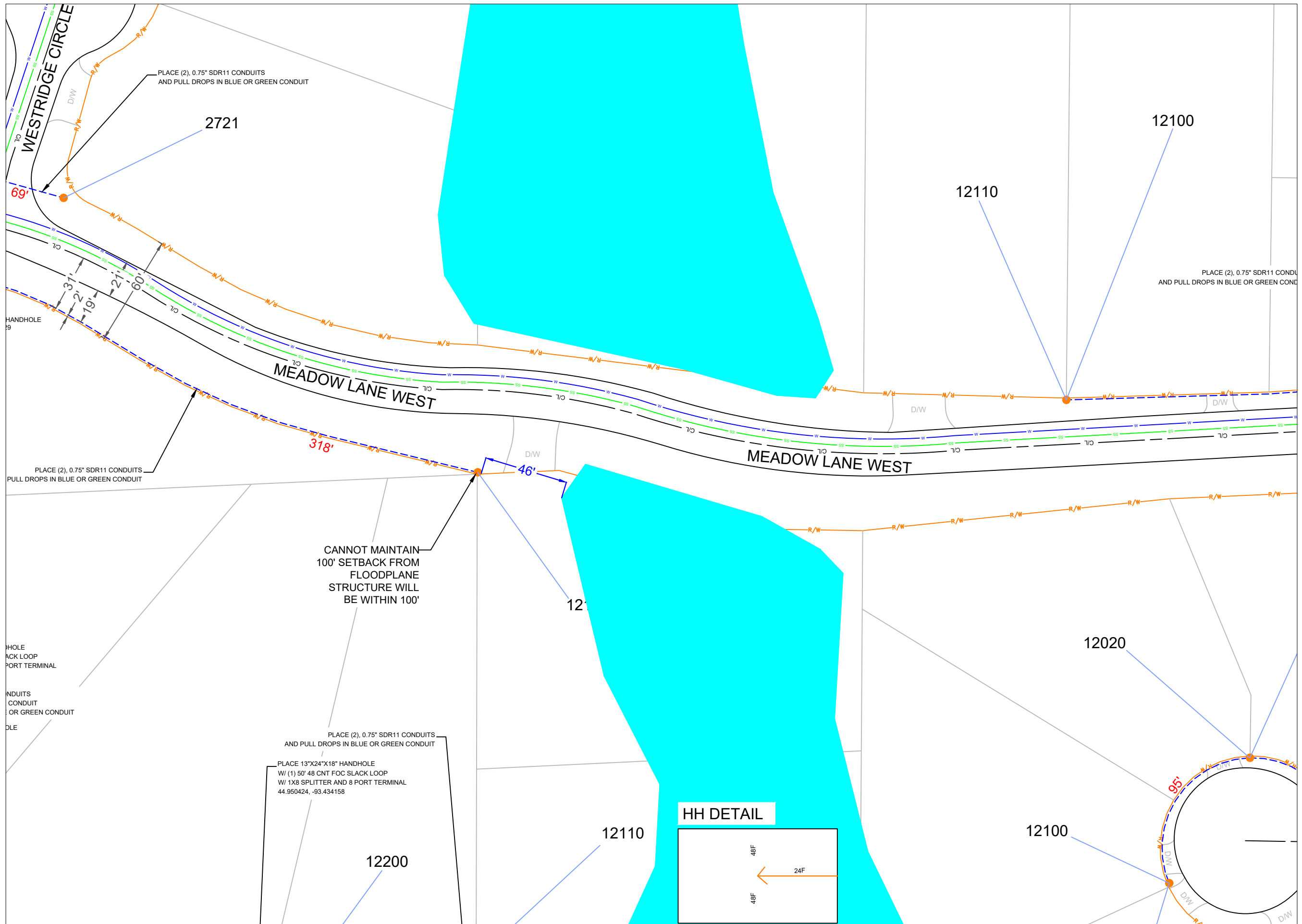
DRAWN BY:	DATE:
CHECKED BY:	DATE:
SUBMITTAL NUMBER:	DATE:



SCALE:
SCALE: 1:50
0' 50' 75'

SHEET NUMBER:
6 of 11





intrepid

DESIGN AREA:
MN_DA405_WC_CEDAR
CROSSING

REV	DATE	DESCRIPTION
1		
2		
3		
4		

PLANS PREPARED BY:
intrepid
INTREPID
11001 W 120TH AVE
SUITE 305
BROOMFIELD CO 80021
844-380-8070

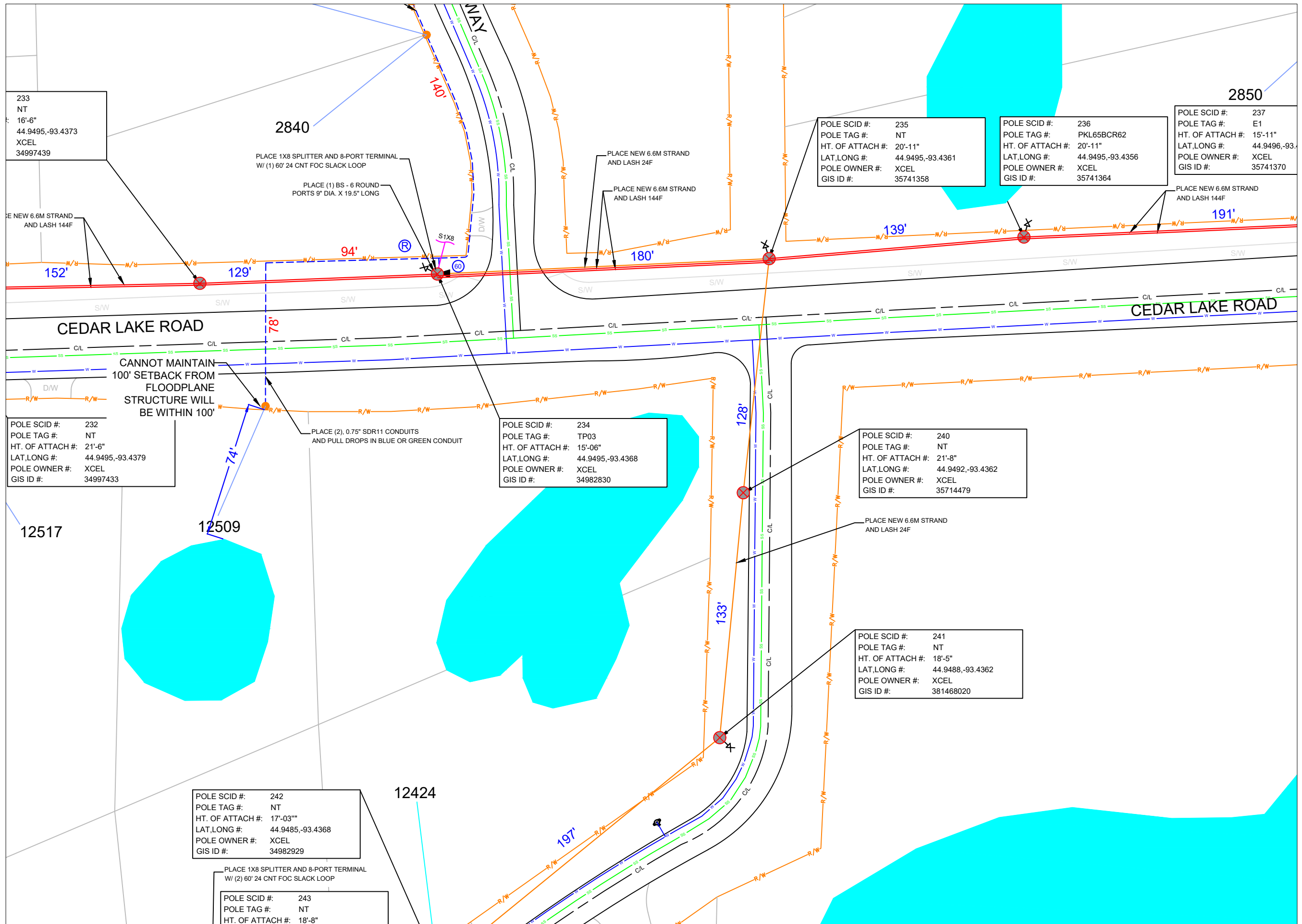
THE INFORMATION CONTAINED IN THIS SET OF DESIGN DOCUMENTS IS PROPRIETARY BY NATURE. ANY USE OR DISCLOSURE TO ANYONE OUTSIDE OF INTREPID FIBER IS PROHIBITED.

DRAWN BY:	DATE:
CHECKED BY:	DATE:
SUBMITTAL NUMBER:	DATE:



SCALE:
SCALE: 1:50
0' 50' 75'

SHEET NUMBER:
7 of 11



intrepid

DESIGN AREA:
MN_DA405_WC_CEDAR
CROSSING

REV	DATE	DESCRIPTION
1		
2		
3		
4		

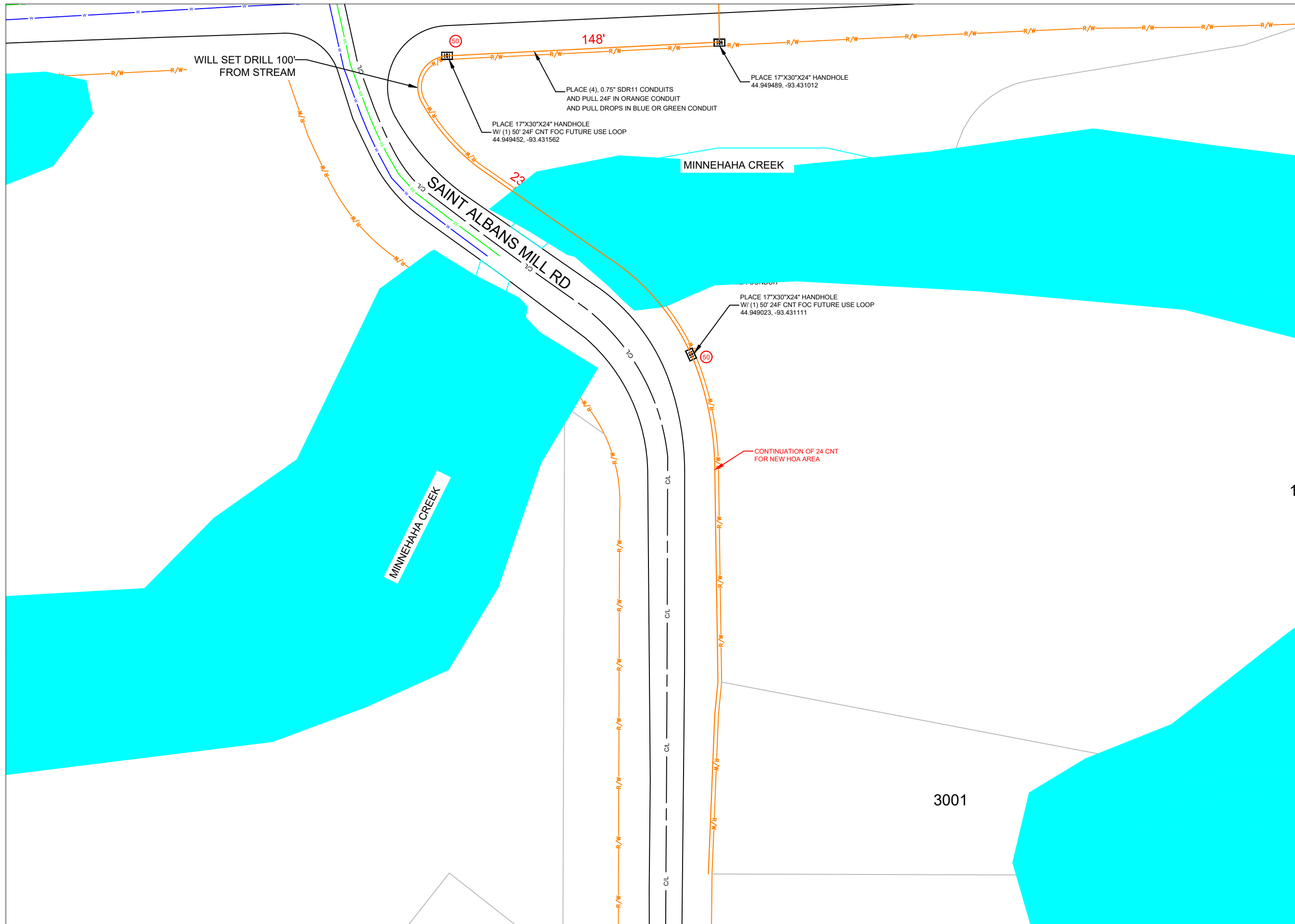
PLANS PREPARED BY:
intrepid
INTREPID
11001 W 120TH AVE
SUITE 305
BROOMFIELD CO 80021
844-380-8070

THE INFORMATION CONTAINED IN THIS SET OF DESIGN DOCUMENTS IS PROPRIETARY BY NATURE. ANY USE OR DISCLOSURE TO ANYONE OUTSIDE OF INTREPID FIBER IS PROHIBITED.

DRAWN BY:	DATE:
CHECKED BY:	DATE:
SUBMITTAL NUMBER:	DATE:

SCALE:
SCALE: 1:50
0' 50' 75'

SHEET NUMBER:
8 of 11



WILL SET DRILL 100'
FROM STREAM

148'

PLACE 17"X30"X24" HANDHOLE
W/ (1) 50' 24F CNT FOC FUTURE USE LOOP
44.949452, -93.431562

PLACE (4), 0.75" SDR11 CONDUITS
AND PULL 24F IN ORANGE CONDUIT
AND PULL DROPS IN BLUE OR GREEN CONDUIT

PLACE 17"X30"X24" HANDHOLE
44.949489, -93.431012

MINNEHAHA CREEK

SAINT ALBANS MILL RD

MINNEHAHA CREEK

PLACE 17"X30"X24" HANDHOLE
W/ (1) 50' 24F CNT FOC FUTURE USE LOOP
44.949023, -93.431111

CONTINUATION OF 24 CNT
FOR NEW HOA AREA

3001



DESIGN AREA:
MN_DA405_WC_CEDAR
CROSSING

REV	DATE	DESCRIPTION
1		
2		
3		
4		

PLANS PREPARED BY:
intrepid
INTREPID
11001 W 120TH AVE
SUITE 305
BROOMFIELD CO 80021
844-380-8070

THE INFORMATION CONTAINED IN THIS SET OF
DESIGN DOCUMENTS IS PROPRIETARY BY NATURE.
ANY USE OR DISCLOSURE TO ANYONE OUTSIDE
OF INTREPID FIBER IS PROHIBITED

DRAWN BY:	DATE:
CHECKED BY:	DATE:
SUBMITTAL NUMBER:	DATE:



SCALE:
SCALE: 1:50
0' 50' 75'

SHEET NUMBER:
9 of 11



intrepid

DESIGN AREA:

MN_DA405_WC_CEDAR
CROSSING

REV	DATE	DESCRIPTION
1		
2		
3		
4		

PLANS PREPARED BY:

intrepid

INTREPID
11001 W 120TH AVE
SUITE 305
BROOMFIELD CO 80021
844-380-8090

THE INFORMATION CONTAINED IN THIS SET OF
DESIGN DOCUMENTS IS PROPRIETARY BY NATURE.
ANY USE OR DISCLOSURE TO ANYONE OUTSIDE
OF INTREPID FIBER IS PROHIBITED.

DRAWN BY:	DATE:
CHECKED BY:	DATE:
SUBMITTAL NUMBER:	DATE:

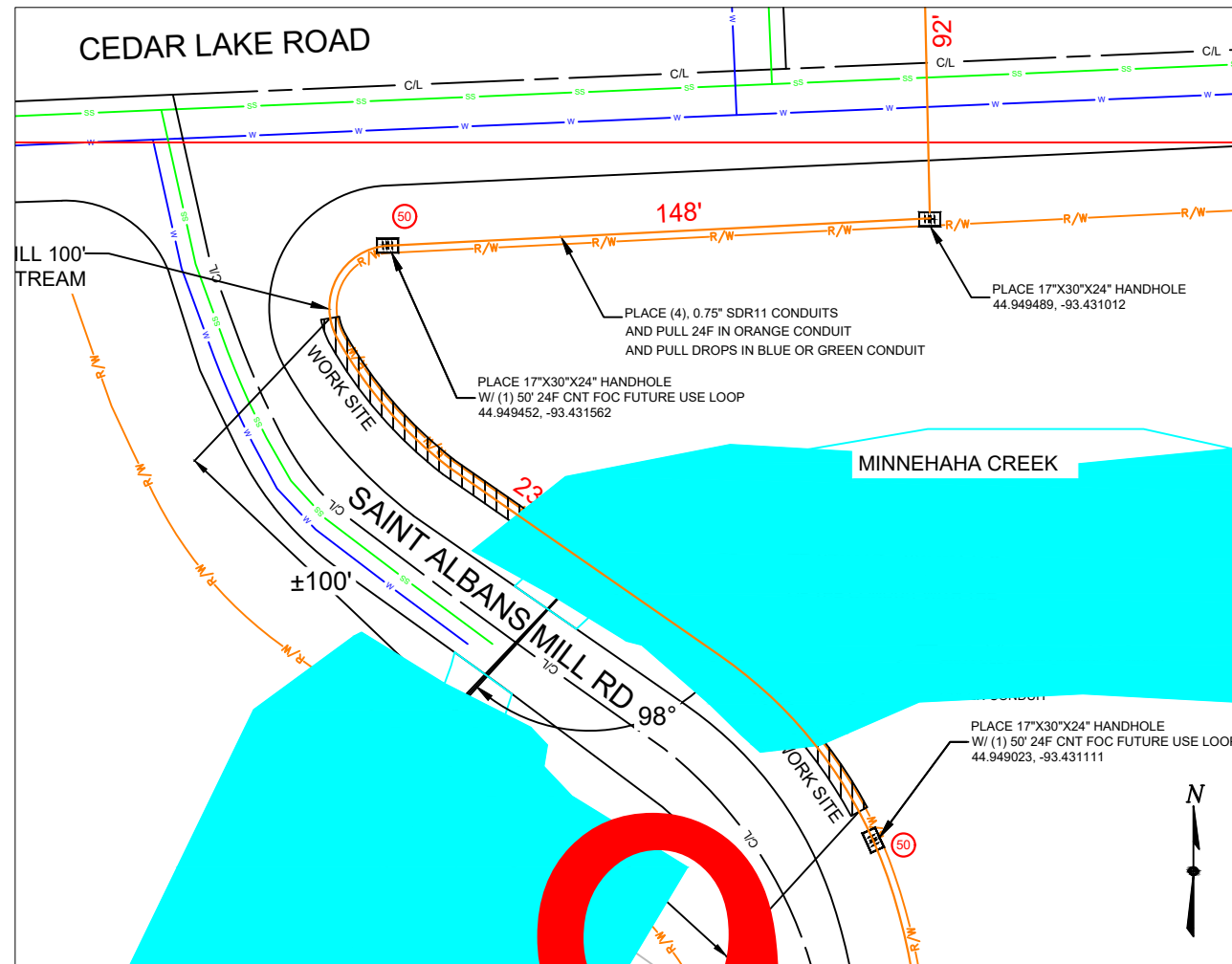
SCALE:

SCALE: 1:50

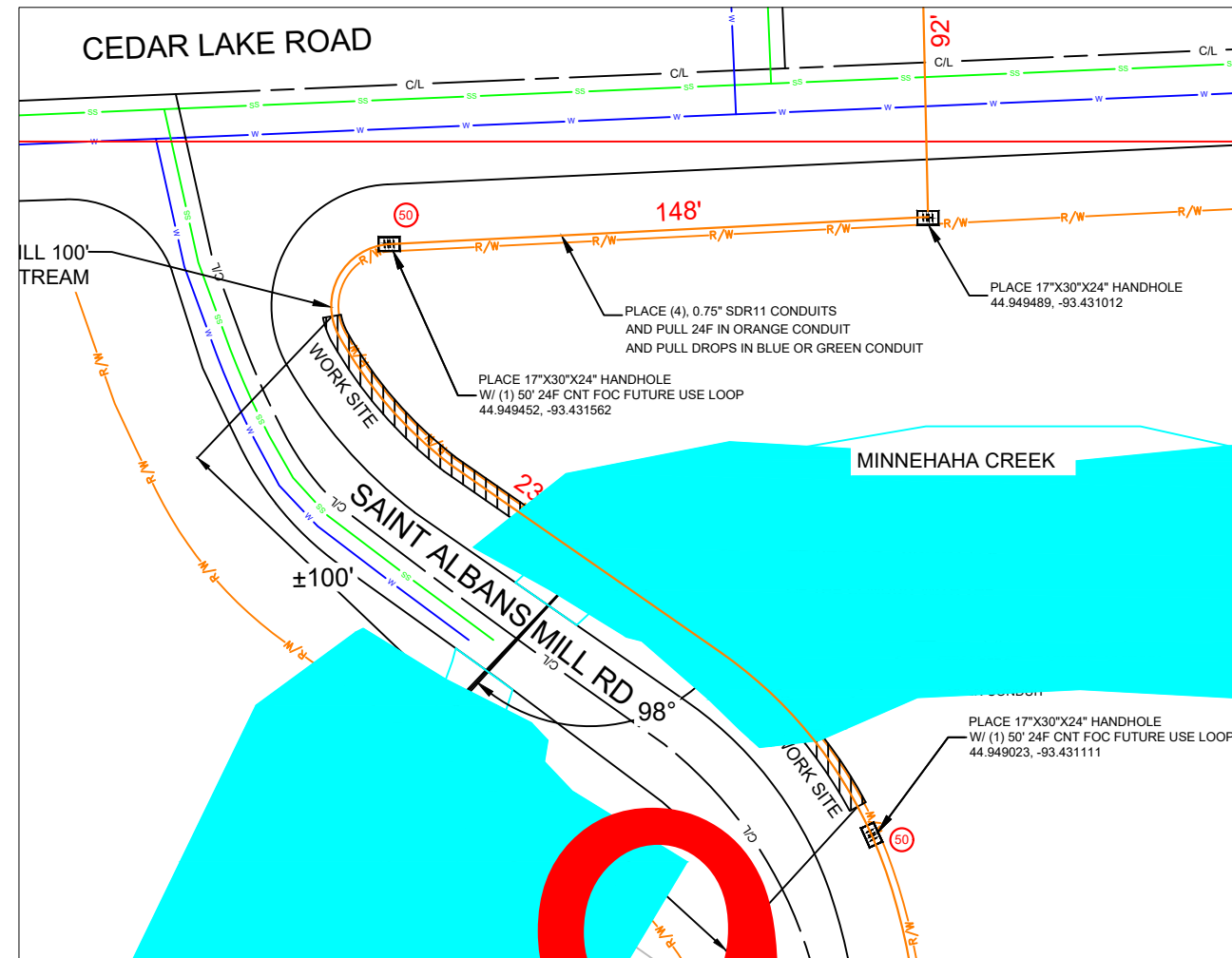


SHEET NUMBER:

10 of 11



LOCATION SKETCH



PLAN VIEW



intrepid

DESIGN AREA:

MN_DA405_WC_CEDAR
CROSSING

REV	DATE	DESCRIPTION
1		
2		
3		
4		

PLANS PREPARED BY:

intrepid

INTREPID
11001 W 120TH AVE
SUITE 305
BROOMFIELD CO 80021
844-380-8070

THE INFORMATION CONTAINED IN THIS SET OF
DESIGN DOCUMENTS IS PROPRIETARY BY NATURE.
ANY USE OR DISCLOSURE TO ANYONE OUTSIDE
OF INTREPID FIBER IS PROHIBITED

DRAWN BY:	DATE:
CHECKED BY:	DATE:
SUBMITTAL NUMBER:	DATE:

SCALE:

SCALE: 1:50



SHEET NUMBER:

11 of 11

