

MEETING DATE: December 11, 2014

TITLE: Authorization to amend the Reach 20 Restoration construction contract with Blackstone Contractors to perform flood damage repair

RESOLUTION NUMBER: 14-XXX

PREPARED BY: Michael Hayman

E-MAIL: Mhayman@minnehahacreek.org

TELEPHONE: 952-471-8226

REVIEWED BY: Administrator Counsel Program Mgr. Board Committee
 Engineer Other

WORKSHOP ACTION:

<input checked="" type="checkbox"/> Advance to Board mtg. Consent Agenda.	<input type="checkbox"/> Advance to Board meeting for discussion prior to action.
<input type="checkbox"/> Refer to a future workshop (date): _____	<input type="checkbox"/> Refer to taskforce or committee (date): _____
<input type="checkbox"/> Return to staff for additional work.	<input type="checkbox"/> No further action requested.
<input type="checkbox"/> Other (specify): _____	

PURPOSE or ACTION REQUESTED:

Authorization to execute change order necessary to complete additional streambank stabilization at locations that experienced damage due to 2014 flood conditions

PROJECT/PROGRAM LOCATION:

Reach 20 Stream Restoration Project, St. Louis Park MN

PROJECT TIMELINE:

October – November 2010	Authorization to enter into contract on feasibility study
April 6, 2011	SLP Parks Commission Meeting
January – July 2011	Modeling, Sediment Sampling, Field Work and Feasibility
June 14, 2011	Technical Evaluation Panel Meeting (USACE, BWSR, HCD, Hennepin County, SLP, MPRB)
June 16, 2011	SW LRT Steering Committee Presentation
June 22, 2011	SLP Parks Commission Meeting
July 11, 2011	SLP Council Study Session
August 8, 2011	Community Meeting
November 3, 2011	Public Hearing
November 10, 2011	Project Ordering
January, 2012	Begin Design Work
Spring/Summer 2012	Community/Stakeholder Input Sessions, Permitting and Design
August 23, 2012	Approval of final design, Authorization to solicit bids

DRAFT for discussion purposes only and subject to Board approval and the availability of funds. Resolutions are not final until approved by the Board and signed by the Board Secretary.

August 23, 2012	Authorization to contract with Hart Howerton to perform corridor planning
November 8, 2012	Authorization to award base bid to Blackstone Contractors
December 2012- May 2013	Construction of stream restoration, stormwater facilities and canoe launches
April 2013	Planning & Policy Committee Review of Trail Concepts
June 25, 2013	Public Informational meeting for Minnehaha Creek Community Trails Initiative
June 27, 2013	Board Consideration of Minnehaha Creek Community Trails Initiative
July 11, 2013	Board Authorization to execute bid alternate and enter into agreement with St. Louis Park
July 25, 2013	Board Authorization to enter into agreement with Hart Howerton for planning and design services
September 12, 2013	Board endorsement of staff recommendations and direction to return at the regularly scheduled Board meeting September 26, 2013 with a final design scope of work from project engineer, HR Green
September 26, 2013	Board Authorization to enter into agreement with HR Green to complete final design services and construction oversight for the Minnehaha Creek Reach 20 Community Trails vices
November 14, 2013	Board review and approval of final design and change order
2014-2015	Boardwalk and bituminous trail system construction

PROJECT/PROGRAM COST:

Fund name and number: 3133
 Current budget: \$51,000 in 2015 for flood damage repair
 Requested amount of funding: \$25,450
 Is a budget amendment requested? No
 Is additional staff requested? No

PAST BOARD ACTIONS:

November 10, 2011	RBA 11-106	Ordering of Reach 20 capital improvement project
December 29, 2011	RBA 11-115	Authorization of design contract
August 23, 2012	RBA 12-072	Easement authorization and approval of final design
	RBA 12-079	Additional corridor and trail planning
November 8, 2012	RBA 12-097	Authorization to award base bid to Blackstone Contractors
June 27, 2013	No Action	Board Consideration of trails and funding
July 11, 2013	RBA 13-074	Authorization to execute bid alternate and enter into agreement with St. Louis Park
July 25, 2013	RBA 13-082	Authorization to enter into agreement with Hart Howerton for planning and design services for Reach 20 Trails
September 12, 2013	No Action	Board endorsement of staff recommendations and direction to return at the regularly scheduled Board meeting September 26, 2013 with a final design scope of work from project engineer HR Green
September 26, 2013	RBA 13-099	Authorization to enter into agreement with HR Green to complete final design services and construction oversight for the Minnehaha Creek Reach 20 Community Trails
November 14, 2013	RBA 13-118	Approval of final design revisions for the Minnehaha Creek Reach 20 Community Trails and authorization to execute change orders
October 9, 2014	RBA 14-083	Concurring in Deletion of Meadowbrook Road Entry Overlook area from Reach 20 Community Trails Initiative

SUMMARY:

As part of the Reach 19-21 Stream Restoration Project, a boardwalk and bituminous trail system was designed to provide passive recreation and educational opportunities around the restored creek system, and facilitate future connections between Methodist Hospital, SW. Cedar Regional Trail, 325 Blake Road, and Cottageville Park, through the Reach 20 Minnehaha Creek corridor. Final design of the revised trail system as well as a refined vegetation management plan was approved in November 2014.

Construction of the trail system began in December 2013 with the installation of bridge footings and helical piers. Construction activities continued intermittently throughout 2014, slightly longer than anticipated due to unfavorable spring and summer conditions. The majority of work is complete, with a segment of bituminous trail between Louisiana Avenue and the lower bridge (near St. Louis Park MSC) to be installed in early 2015. Additional vegetation management and trail finish work is also scheduled to occur in early 2015.

During boardwalk construction, staff evaluated the need for additional stabilization at a creek segment near the trail system that had been excluded from the original stream restoration work. As staff worked with the project engineer to address this concern, Minnehaha Creek experienced historic flood conditions, inundating the majority of the restoration site for an extended period of time. Following flooding, staff investigated the site for further damage and determined that at this location, additional stabilization is necessary to repair the stream channel and protect the trail system.

During the 2015 budget and work plan development for Reach 19-21, staff included funds for projected maintenance costs associated with potential bank failure and loss of vegetation. Staff estimated maintenance costs of approximately \$51,000 would be necessary to address probable issues.

Inter-Fluve recently completed streambank stabilization recommendations. A cost estimate has been provided by Blackstone Contractors in the amount of \$25,450. Staff recommends that this work be authorized through change order utilizing 2015 flood repair funds.

Staff will provide a brief presentation at the Board workshop on December 11, 2014

ATTACHMENTS:

- Site plan

RESOLUTION

RESOLUTION NUMBER: 14-XXX

TITLE: **Authorization to amend the Reach 20 Restoration construction contract with Blackstone Contractors to perform flood damage repair**

WHEREAS on August 23, 2012, the Minnehaha Creek Watershed District (MCWD) Board of Managers (“Board”) approved a final design for the Reach 20 capital improvement project, encompassing creek remeandering, a regional stormwater basin, and a trail design;

WHEREAS on November 8, 2012, the Board awarded a contract to Blackstone Contractors (“Blackstone”) in the amount of \$1,859,370.38, including a bid alternate for trails of approximately \$1,035,907, and authorized the administrator to issue a notice to proceed for the base bid only; and

WHEREAS in May 2013, Blackstone completed the remeander and stormwater basin work in accordance with plans and specifications;

WHEREAS on November 14, 2013, the Board approved the final trail bid alternate alignment and design as recommended by MCWD staff, and authorized the MCWD administrator, on the recommendation of the construction manager and advice of counsel, to execute one or more change orders necessary to conform the trail facility bid alternate to the alignment and design that the Board has approved;

WHEREAS Inter-Fluve Inc, the stream restoration design engineer, has recommended modifications to streambank stabilization due to further degradation experienced during historic flooding in 2014, and to further protect the District’s investment in a boardwalk trail system; and

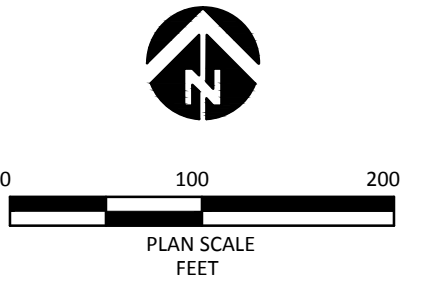
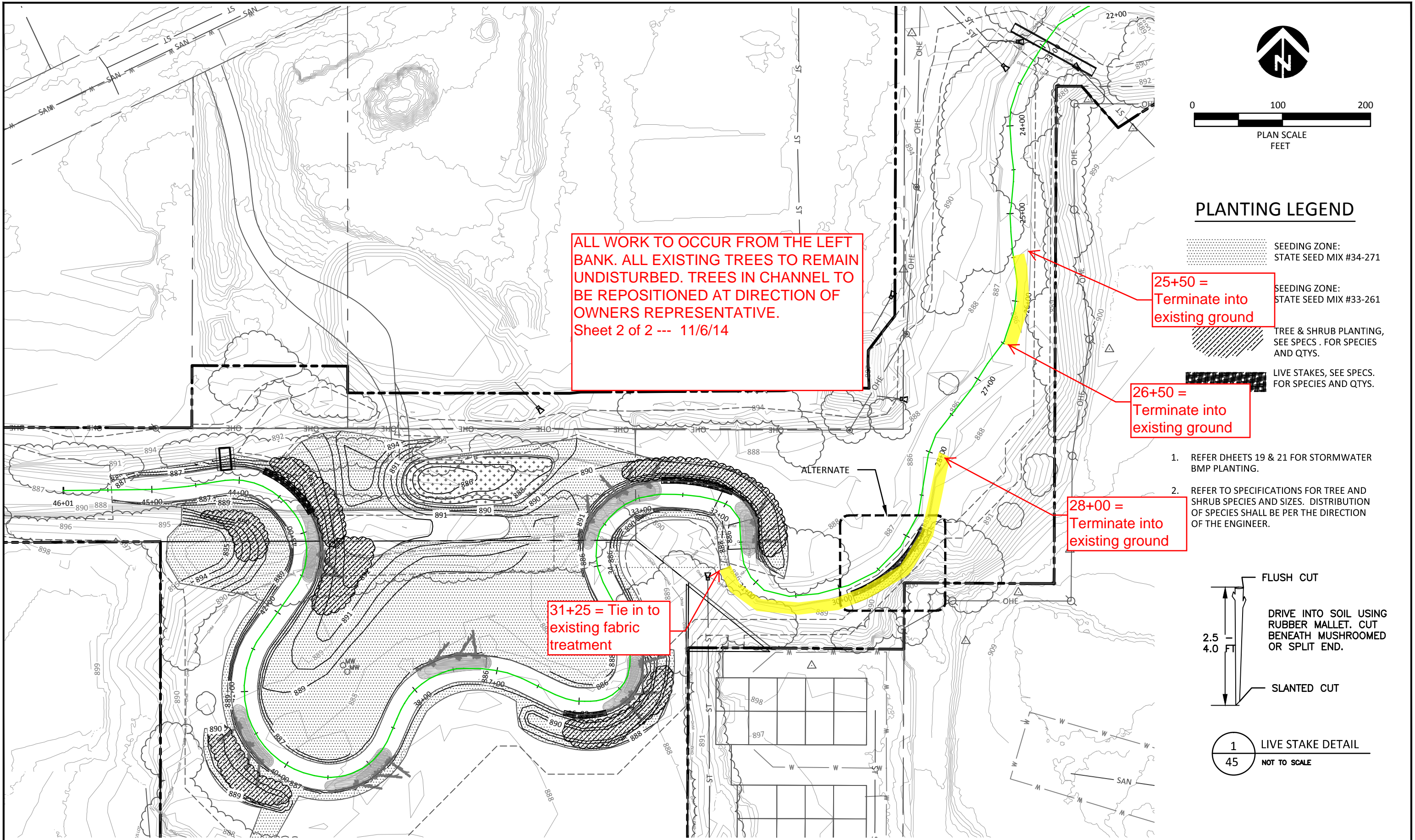
WHEREAS the District projected maintenance and repair would be necessary to repair damage due to flooding, and allocated funds during the 2015 budget process to address these issues;

THEREFORE BE IT RESOLVED that the Minnehaha Creek Watershed District Board of Managers authorizes use of 2015 maintenance and repair funds for additional streambank stabilization as part of the Reach 19-21 Restoration Project; and

BE IT FURTHER RESOLVED that the Board hereby authorizes the MCWD administrator, on advice of counsel, to execute one or more change orders necessary to complete streambank stabilization work in an amount not to exceed budgeted 2015 maintenance and repair funds for the project.

Resolution Number 13-XXX was moved by Manager _____, seconded by Manager _____.
Motion to adopt the resolution ___ ayes, ___ nays, ___ abstentions. Date: _____.

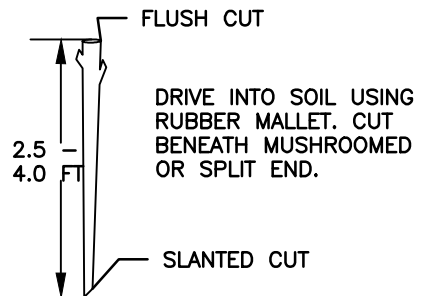
Secretary Date:_____



PLANTING LEGEND

- SEEDING ZONE: STATE SEED MIX #34-271
- SEEDING ZONE: STATE SEED MIX #33-261
- TREE & SHRUB PLANTING, SEE SPECS. FOR SPECIES AND QTYS.
- LIVE STAKES, SEE SPECS. FOR SPECIES AND QTYS.

1. REFER DHEETS 19 & 21 FOR STORMWATER BMP PLANTING.
2. REFER TO SPECIFICATIONS FOR TREE AND SHRUB SPECIES AND SIZES. DISTRIBUTION OF SPECIES SHALL BE PER THE DIRECTION OF THE ENGINEER.



ALL WORK TO OCCUR FROM THE LEFT BANK. ALL EXISTING TREES TO REMAIN UNDISTURBED. TREES IN CHANNEL TO BE REPOSITIONED AT DIRECTION OF OWNERS REPRESENTATIVE.
Sheet 2 of 2 --- 11/6/14

25+50 =
Terminate into
existing ground

26+50 =
Terminate into
existing ground

28+00 =
Terminate into
existing ground

31+25 = Tie in to
existing fabric
treatment

1	10/01/12	BID DOCUMENTS
NO.	DATE	REVISION DESCRIPTION

SJ,CP,LB	LB,BL,SJ	AS,MM
DRAWN	DESIGNED	CHECKED
AS	10-01-12	12-04-06
APPROVED	DATE	PROJECT

Minnehaha Reach 20 Restoration
Minnehaha Creek Watershed District
St. Louis Park, MN

I HEREBY CERTIFY THAT THIS PLAN, SPECIFICATION, OR REPORT WAS PREPARED BY ME OR UNDER MY DIRECT SUPERVISION AND THAT I AM A DULY LICENSED PROFESSIONAL ENGINEER UNDER THE LAWS OF THE STATE OF MINNESOTA.
DATE 10/01/12 ANDY SELLE REG. NO. 49257



REVEGETATION PLAN
STATIONS 22+00 TO 45+14

SHEET
45 of 45