



---

**Title:** Authorization to solicit bids for Six Mile Marsh Prairie trail construction

**Resolution number:** 22-007

**Prepared by:** Name: Laura Domyancich-Lee  
Phone: 952.641.4582  
ldomyancich-lee@minnehahacreek.org

**Reviewed by:** Name/Title: Michael Hayman, Project Planning Manager; Anna Brown, Planner-PM

**Recommended action:** Board authorization to solicit bids for the construction of the Six Mile Marsh Prairie trail with interpretive elements bid as alternates.

**Schedule:** February 11 - March 11, 2022: Construction bid solicitation  
March 24, 2022: Construction bid award  
April – June 2022: Project construction

**Budget considerations:** Fund name and code: Six Mile Marsh Prairie 3-3106  
Fund budget: \$347,861  
Expenditures to date: \$59,274  
Requested amount of funding: \$0

**Past Board action:**

- Res # 08-092 Halstead Bay Wetland Restoration Project, Project Ordering
- Res # 11-052A Authorization to purchase Halverson property in the Six Mile Marsh Subwatershed
- Res # 12-077 Authorization to execute a contract for design and construction oversight for the Halverson-Dimler Restoration
- Res # 13-027 Six Mile Marsh Prairie Restoration Project – Award of Construction Contract
- Res # 20-101 Amendment to the 2021 Budget
- Res # 21-021 Authorization to release the request for proposals for Six Mile Marsh Prairie trail and interpretation design
- Res # 21-034 Authorization to execute contract for Six Mile Marsh Prairie trail and interpretation design
- Res # 21-040 Authorization to contract for Six Mile Marsh Prairie site survey
- Res # 21-049 Authorization to enter Local Trail Agreement with Three Rivers Park District for Six Mile Marsh Prairie trail
- Res # 21-062 Approval of Six Mile Marsh Prairie trail and interpretation 90% design plans and authorization to solicit bids
- Res # 21-076 Authorization to reject bids for the Six Mile Marsh Prairie trail and interpretation project
- Res # 21-087 Authorization to Amend Six Mile Marsh Prairie Trail Design Contract with Damon Farber Landscape Architects

**Summary:**

Beginning in 2008, the Minnehaha Creek Watershed District (MCWD) began to identify opportunities for wetland restorations that would reduce external phosphorus loading to Six Mile Creek and downstream Halstead Bay. These efforts led to the 2011-2012 purchases of three adjacent parcels that total 210 acres and are positioned on the north edge of Six Mile Marsh. In 2013, the MCWD undertook restoration of these former agricultural properties, collectively known as the Six Mile Marsh Prairie Restoration. The restoration of the site as a whole has been aimed at both reducing nutrient loading and improvement of upland prairie, wetland, and woodland habitat within the site. Included in original design plans for the restoration of the site was a proposed future trail alignment that would serve as a spur trail from the Dakota Rail Regional Trail which lies on the property's western boundary. However, construction of the spur trail was deferred to allow the restoration time to establish prior to providing public access on the site.

MCWD's 2021 Capital Improvement Plan included \$172,851 carried forward from the original capital project budget to design and construct a public access trail into the Six Mile Marsh Prairie from the Dakota Rail Regional Trail. Given recent experience with trail design and site interpretation at Wassermann Lake Preserve and the greater investment into the Six Mile Creek-Halsted Bay (SMCHB) subwatershed as a focal geography, the Board of Managers approved a budget amendment on December 17, 2020 that increased the project budget to \$347,861 to support the development of a more comprehensive site access and interpretation plan.

In pursuit of creating a valuable user experience that is sensitive to the site, staff solicited design services, including landscape architecture, engineering, and interpretive element design, through a competitive request for proposals (RFP) process. On May 13, 2021, the Board of Managers authorized execution of a contract with Damon Farber Landscape Architects for design of a pedestrian trail and an interpretive program. Design reached the 90% design phase in September 2021, and the Board of Managers subsequently approved those plans on September 23, 2021 and authorized staff to solicit construction bids. To exercise control over costs, staff separated the construction of the trail and trailhead signage as a lump sum base bid, and the four interpretive elements were bid as individual alternates.

A bid solicitation period of three weeks returned only two bids, and both bids exceeded the project budget by more than \$200,000. The Board directed staff to reject the submitted bids on November 18, 2021 with the understanding that an improved bid response was possible if specific elements of the bid package were refined and if the bid period was lengthened and held during a more opportune time. On December 16, 2021, the Board authorized staff to amend the design contract budget by \$4,000 providing additional funds for Damon Farber to refine specifications and plans.

Over the past six weeks, the project specifications have been converted to a line item bid form that requires bidders to assign a cost to each operation or material line item that will, in total, equal the submitted bid price. This approach will prevent bidders from including higher contingencies which are often added to lump sum bids to cover unforeseen costs not evident in a lump sum package. To add further clarity to the bid, the form will follow itemization standard to the Minnesota Department of Transportation (MnDOT) with operations and materials tied to MnDOT specifications.

Design plans have also been altered due to cost considerations. Recognizing that the specified decomposed granite for the pedestrian trail is a premium material, the refined design now calls for Class V limestone gravel as the base bid trail surface and the decomposed granite as an add alternate. Also, the structural components of the "Transect" interpretive feature have been streamlined considerably to reduce costs but retain integrity and longevity. As with the first bid solicitation, the four interpretive elements will also be bid as individual alternates.

Other design alterations of note include additions to the base bid to provide further site enhancement beyond only the trail and trailhead signage. These additions are to construct the groundwork for both the "Transect" interpretive area and the gathering space at the barn including installation of the two planned picnic tables. If bid prices prevent the installation of the full interpretive plan, improvements to these two areas will establish an additional level of placemaking at a minimal expense.

In addition to these refinements, a late winter bid solicitation period of four weeks will likely be advantageous. Contractors will have adequate time to assemble a bid package and consider the project's time commitment as they set spring construction schedules.

Staff recommends authorization to solicit bids for construction of the Six Mile Marsh Prairie trail and interpretation.

**Supporting documents:** Attachment 1: Six Mile Marsh Prairie Trail Design Plans



## RESOLUTION

---

**Resolution number:** 22-007

**Title:** Authorization to solicit bids for Six Mile Marsh Prairie trail construction

- WHEREAS in August 2011 and August 2012, the Board of Managers authorized the purchase of three contiguous parcels north of the Six Mile Marsh totaling 210 acres for the purpose of implementing restoration of wetland basins and adjacent upland within the site. The purpose of this acquisition was to advance nutrient reduction goals in the subwatershed and particularly to lower phosphorus export to Halstead Bay, which requires the largest phosphorus load reduction within the Minnehaha Creek Watershed District (MCWD);
- WHEREAS in January 2013, the Board of Managers approved the final design of the Six Mile Marsh Prairie Restoration project which implemented 110 acres of wetland and adjacent upland restoration and developed concept plans for future construction of a spur trail to create public access to the property once the restoration was established;
- WHEREAS in May 2014, the Board of Managers identified the Six Mile Creek-Halstead Bay (SMCHB) subwatershed as a priority area for focusing planning activities and coordination efforts with subwatershed partners. As such, the Six Mile Marsh Prairie Restoration project has been advanced with support from the City of Minnetrista, Three Rivers Park District, Hennepin County Regional Rail Authority, and the US Fish and Wildlife Service;
- WHEREAS in January 2018, the Board of Managers adopted the MCWD Watershed Management Plan (WMP), which incorporated a comprehensive restoration strategy for the SMCHB subwatershed to achieve MCWD's goals of protecting and improving water quality, water quantity, ecological integrity, and thriving communities through land use and water integration. The WMP includes MCWD program activities which include engaging and educating communities on water resource issues and building support for MCWD projects;
- WHEREAS in December 2020, the Board of Managers amended the 2021 budget to increase the budget for the Six Mile Marsh Prairie Restoration project to \$347,861 for design and construction of a trail connecting the Dakota Rail Regional Trail to the Six Mile Marsh Prairie site and interpretive elements for the project;
- WHEREAS in March 2021, the Board of Managers authorized the release of the request for proposals for design services for the Six Mile Marsh Prairie trail and interpretation and in May 2021, following a competitive selection process, the Board of Managers authorized a design and construction oversight contract with Damon Farber Landscape Architects;
- WHEREAS Three Rivers Park District (TRPD), which manages the Dakota Rail Regional Trail to which the Six Mile Marsh Prairie trail will connect, reviewed and approved the location and design of the connection, and an agreement allowing the connection and setting maintenance terms was formally approved by the TRPD Board of Commissioners in a Local Trail Agreement in August 2021;
- WHEREAS Hennepin County Regional Rail Authority (HCRRA), which owns the property on which the regional trail is located, reviewed and approved the location and design of the Six Mile Marsh Prairie trail connection

to the regional trail, and HCRRA issued a permit for construction of the connecting trail in September 2021;

WHEREAS on September 23, 2021, the Board of Managers approved 90% design plans and authorized staff to solicit bids for construction;

WHEREAS on October 7, 2021, by publication, MCWD solicited sealed bids for a base project of trail construction and related improvements and bids for four interpretive features which were bid as add alternates;

WHEREAS MCWD received two bids by the submittal date of October 27, 2021, both responsive bids. The low bid exceeded the District designer's estimate by more than 65-percent and well exceeded the amount MCWD budgeted for construction;

WHEREAS on November 18, 2021, the Board of Managers rejected submitted bids and directed staff to seek authorization to rebid the project when bid conditions improved;

WHEREAS in preparation for a rebid, staff engaged Damon Farber Landscape Architects through a design contract amendment approved by the Board of Managers on December 16, 2021, to make adjustments and refinements to the bid package directed at soliciting an improved bid response;

WHEREAS the bid package has been duly revised and staff is advised that bid conditions have improved due to time of year and an extended bid period.

NOW, THEREFORE, BE IT RESOLVED that the Minnehaha Creek Watershed District Board of Managers authorizes the District Administrator to solicit bids for construction of the Six Mile Marsh Prairie trail.

Resolution Number 22-007 was moved by Manager \_\_\_\_\_, seconded by Manager \_\_\_\_\_. Motion to adopt the resolution \_\_\_ ayes, \_\_\_ nays, \_\_\_ abstentions. Date: 2/10/2022

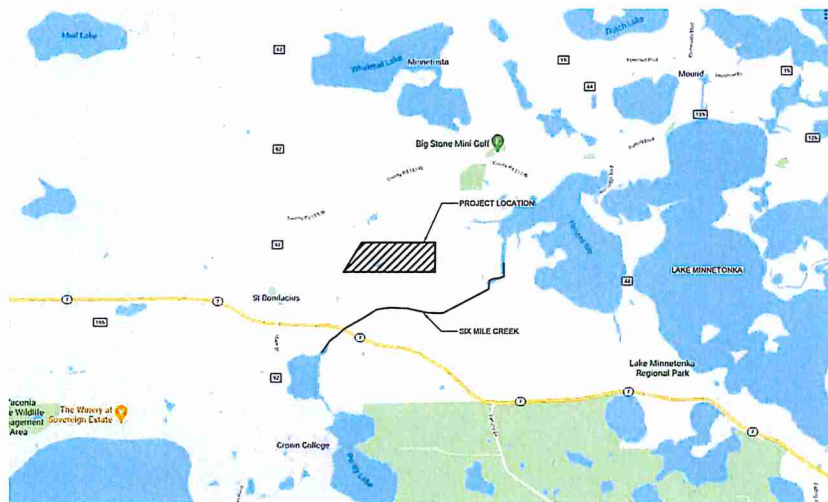
\_\_\_\_\_  
Secretary Date: February 10, 2022

# SIX MILE MARSH PRAIRIE TRAIL

## Landscape Architecture, Engineering, and Site Interpretation Design



**DF/**  
**DAMON FARBER**  
**LANDSCAPE ARCHITECTS**  
 310 South 4th Avenue, Suite 7050  
 Minneapolis, MN 55415  
 p: 612.332.7522



**PROJECT INFORMATION**  
 SIX MILE MARSH PRAIRIE TRAIL  
 DF PROJECT # 21-131

**PROJECT ADDRESS:**  
 7701, 7901, 8015 HALSTEAD DRIVE,  
 MINNETRISTA, MN 55364

**PROJECT DIRECTORY**

**OWNER:**  
 MINNEHAHA CREEK WATERSHED DISTRICT  
 15320 MINNETONKA BLVD, MINNETONKA, MN 44345

**CONTACT: LAURA DOMYANCICH-LEE,**  
 PLANNER-PROJECT MANAGER, (952)641-4582

**LANDSCAPE ARCHITECT:**  
 DAMON FARBER LANDSCAPE ARCHITECTS  
 310 SOUTH 4TH AVENUE STE. 7050  
 MINNEAPOLIS, MN 55415  
**CONTACT: JODI REFSLAND**  
 PHONE: (612) 332-7522

SHEET INDEX	
SHEET	DESCRIPTION
L-001	COVER SHEET
L-002	GENERAL NOTES
L-003	EXISTING CONDITIONS SURVEY
L-004	TREE PRESERVATION PLAN & NOTES
L-006	SWPPP
L-007	SWPPP NOTES & DETAILS
L-010	SCHEDULES
L-100	SITE PLAN
L-101	GRADING AND DRAINAGE PLAN
L-102	SEEDING PLAN
L-201	ENLARGED PLANS
L-500	LANDSCAPE DETAILS
L-501	ALTERNATE 1 LANDSCAPE DETAILS
L-502	ALTERNATE 2 LANDSCAPE DETAILS
L-503	ALTERNATE 3 & 4 LANDSCAPE DETAILS

**ALTERNATES (See Sheet L-201 for enlarged plans):**

1. ADD ALTERNATE #1: PROVIDE TRANSECT INTERPRETIVE FEATURE.
2. ADD ALTERNATE #2: PROVIDE BARN INTERPRETIVE FEATURE.
3. ADD ALTERNATE #3: PROVIDE CUSTOM LOUNGERS.
4. ADD ALTERNATE #4: PROVIDE WATERSHED MAP INTERPRETIVE FEATURE.
5. ADD ALTERNATE #5: PROVIDE DECOMPOSED GRANITE IN LIEU OF LIMESTONE TRAIL MIX AT PAVING TYPE P-01. SEE DETAIL 1/L500.

100% CONSTRUCTION DOCUMENTS  
 2/16/22

SIX MILE  
 MARSH  
 PRAIRIE TRAIL

MINNETRISTA, MN

I hereby certify that this document was prepared by me or under my direct supervision and that I am a duly Licensed Landscape Architect under the laws of the State of Minnesota.

Name: Thomas Whitlock  
 Registration #: 26202  
 Signature: *[Signature]*  
 Date: 2/16/22

Date: 2/16/22  
 DFI Project #: 21-131  
 Scale: VARIOUS  
 Drawn/Checked: JLR, JLR, JD

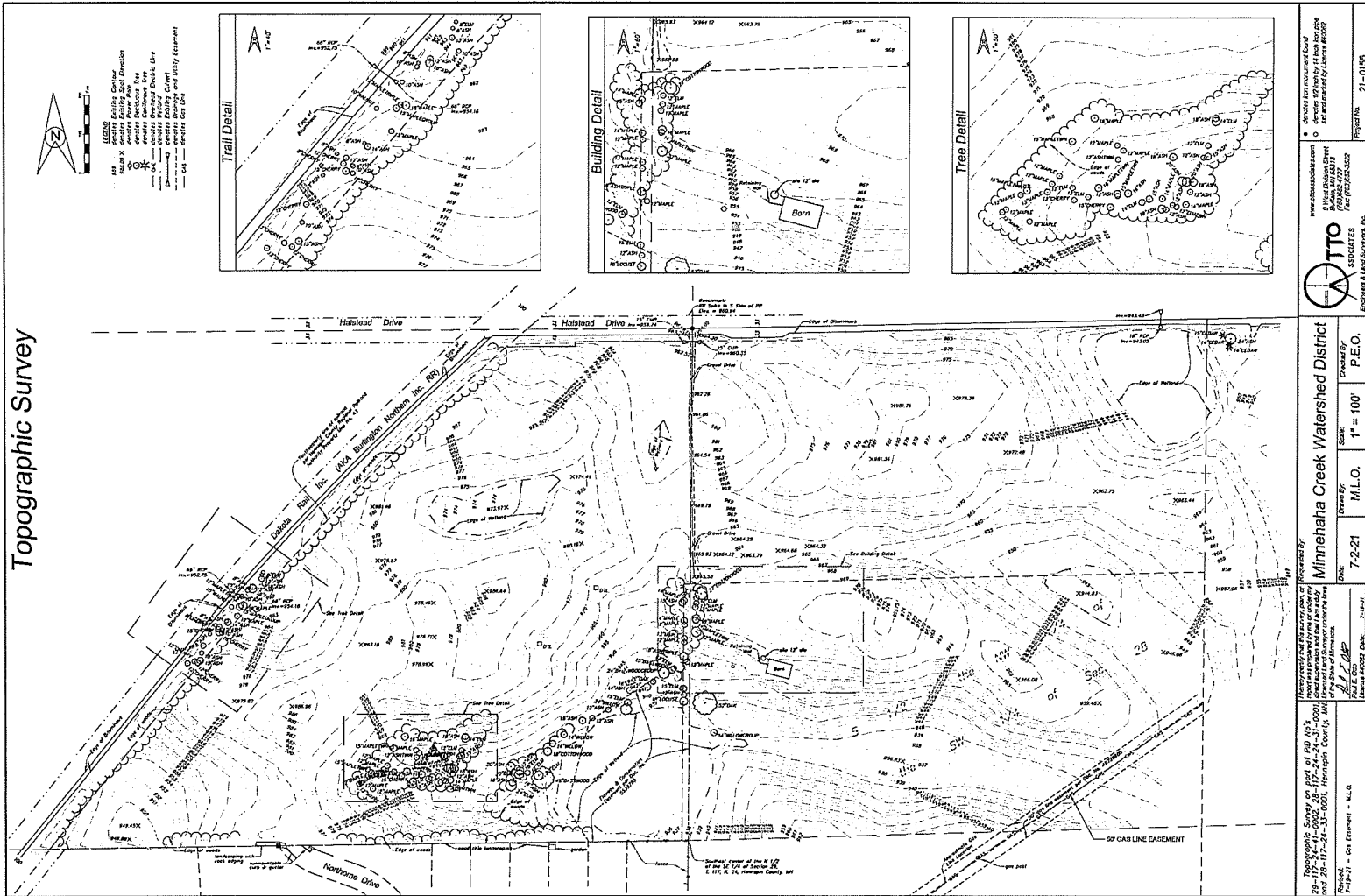
REVISION	

COVER PAGE

L-001



# Topographic Survey



www.dakotasurvey.com  
8 West Union Street  
PO Box 24717  
Fargo, ND 58102  
Tel: (701) 785-3337

Engineers & Land Surveyors, Inc.  
Project No. 21-0185

Minnehaha Creek Watershed District  
7-2-21  
M.L.O.  
Scale 1" = 100'  
7-2-21  
P.E.O.

Minnehaha Creek Watershed District  
7-2-21  
M.L.O.  
Scale 1" = 100'  
7-2-21  
P.E.O.

Minnehaha Creek Watershed District  
7-2-21  
M.L.O.  
Scale 1" = 100'  
7-2-21  
P.E.O.

- NOTES**
1. SURVEY BY OTHERS. INCLUDED FOR REFERENCE ONLY.
  2. EXISTING SITE INCLUDES GAS LINE & EASEMENT- SEE NOTES AND GRADING PLAN FOR REQUIREMENTS WHEN WORKING WITHIN 25' OF CASILINE EASEMENT.
  3. FIBER OPTIC LINES MAY BE PRESENT IN DAKOTA RAIL TRAIL CORRIDOR.

**DAMON FARBBER  
LANDSCAPE ARCHITECTS**

310 South 4th Avenue, Suite 7050  
Minneapolis, MN 55415  
415.333.7522

100% CONSTRUCTION DOCUMENTS  
2/9/2022

## SIX MILE MARSH PRAIRIE TRAIL

MINNETRISTA, MN

I hereby certify that this document was prepared by me or under my direct supervision and that I am a duly Licensed Landscape Architect under the laws of the State of Minnesota.

Name: Thomas Woodcock  
Registration No: 26252  
Expire: 2025  
Signature: (Signature)

Date: 2/9/2022  
DTI Printed: 2/11/22  
Scale: N/A  
Drawn/Checked: JH, JH, AD  
REVISION:  
\_\_\_\_\_  
\_\_\_\_\_  
\_\_\_\_\_

## EXISTING CONDITIONS SURVEY

# L-003

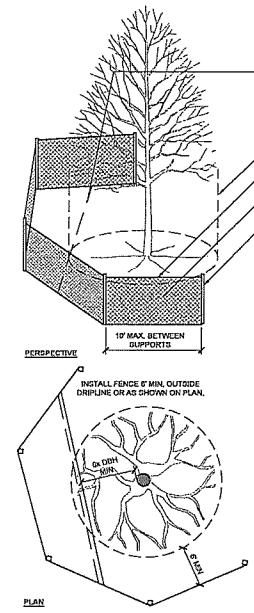
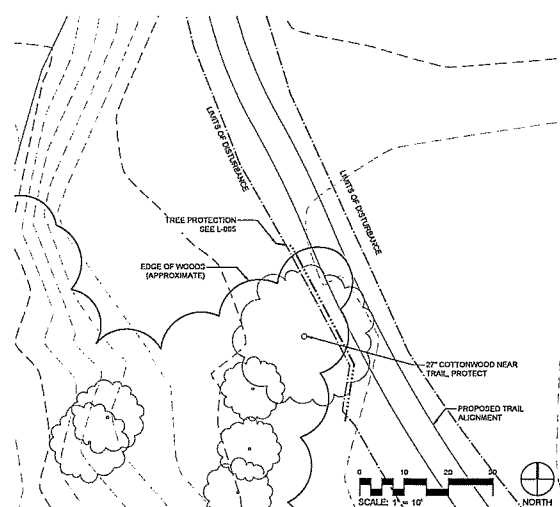
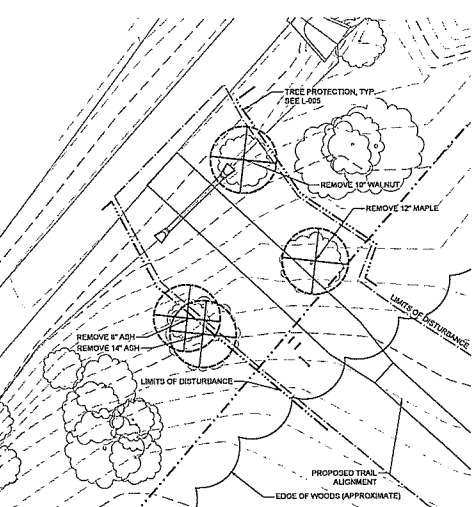
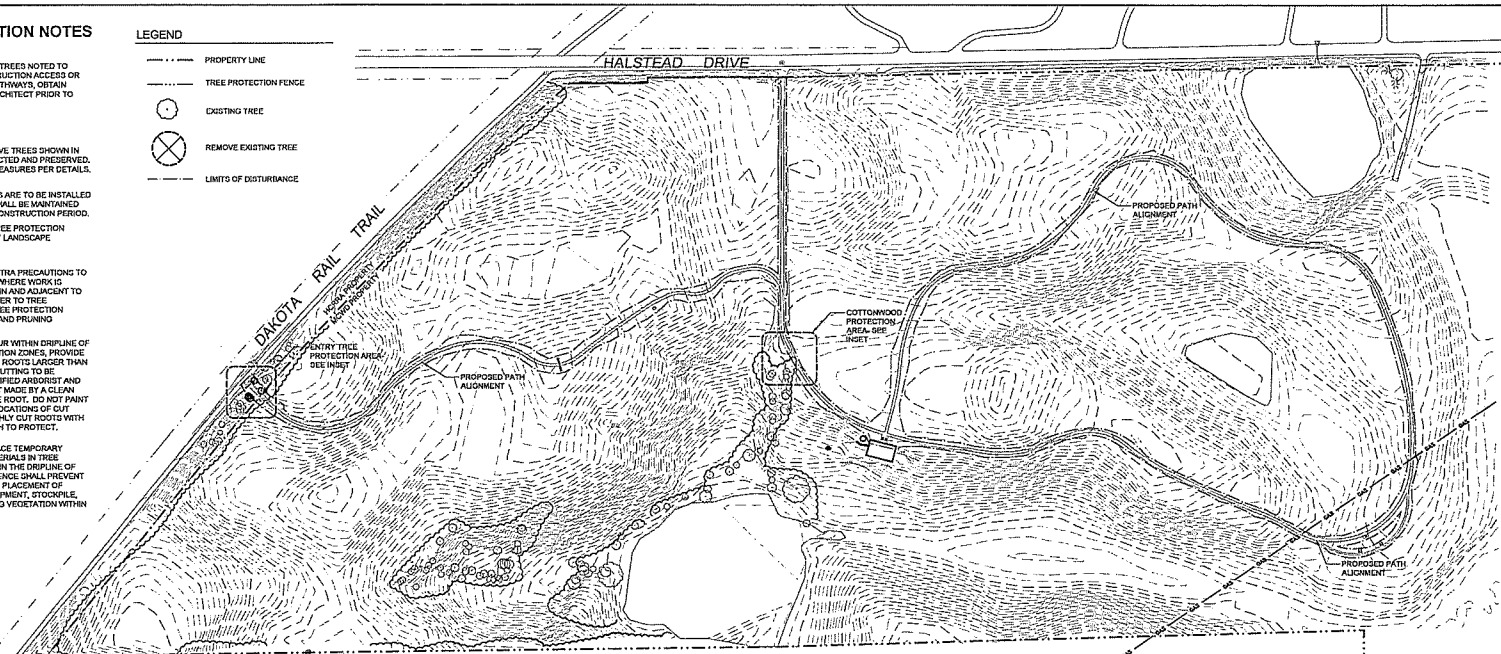


**TREE PRESERVATION NOTES**

- SITE SPECIFIC NOTES**
- WHERE LIMITING OF EXISTING TREES NOTED TO REMAIN IS REQUIRED FOR CONSTRUCTION ACCESS OR CLEARANCE FOR PROJECT PATHWAYS, OBTAIN APPROVAL BY LANDSCAPE ARCHITECT PRIOR TO PRUNING.
- TREE PROTECTION**
- CONTRACTOR SHALL PRESERVE TREES SHOWN IN THE DRAWINGS TO BE PROTECTED AND PRESERVE, INSTALL TREE PROTECTION MEASURED PER DETAILS.
  - TREE PROTECTION MEASURES ARE TO BE INSTALLED PRIOR TO DEMOLITION AND SHALL BE MAINTAINED FOR THE DURATION OF THE CONSTRUCTION PERIOD.
  - NO WORK SHALL OCCUR IN TREE PROTECTION ZONES UNLESS APPROVED BY LANDSCAPE ARCHITECT.
  - CONTRACTOR SHALL TAKE EXTRA PRECAUTIONS TO MINIMIZE DAMAGE TO TREES WHERE WORK IS DESIGNATED TO OCCUR WITHIN AND ADJACENT TO THE DRIFLINE OF TREES. REFER TO TREE PROTECTION DETAILS FOR TREE PROTECTION FENCE, TRUNK PROTECTION, AND PRUNING PRACTICES.
  - WHERE WORK IS TO OCCUR WITHIN DRIFLINE OF TREES OR TREE PROTECTION ZONES, PROVIDE CLEAN ROOT CUTTING OF ROOTS LARGER THAN 1 1/2" IN DIAMETER. ROOT CUTTING TO BE PERFORMED BY ISA CERTIFIED ARBORIST AND SHALL HAVE A CLEAN CUT MADE BY A CLEAN SAW ON SURFACE OF THE ROOT. DO NOT PAINT CUT ROOT ENDS. FLAG LOCATIONS OF CUT ROOTS AND COVER FRESHLY CUT ROOTS WITH 4" LAYER ORGANIC MULCH TO PROTECT.
  - CONTRACTOR SHALL NOT PLACE TEMPORARY STRUCTURES OR STONE MATERIALS IN TREE PROTECTION ZONES OR WITHIN THE DRIFLINE OF TREES. TREE PROTECTION FENCE SHALL PREVENT TRAFFIC MOVEMENT AND THE PLACEMENT OF TEMPORARY FACILITIES, EQUIPMENT, STOCKPILE, AND SUPPLIES FROM HARMING VEGETATION WITHIN LIMITS OF PROTECTION.

**LEGEND**

- PROPERTY LINE
- TREE PROTECTION FENCE
- EXISTING TREE
- ⊗ REMOVE EXISTING TREE
- LIMITS OF DISTURBANCE



- WHERE GROUP OF TREES IS TO BE PROTECTED, PROTECT TREES AS MASS WITH SINGLE FENCE, DO NOT PROTECT INDIVIDUALLY.
- IN LOCATIONS WHERE TREE PROTECTION FENCE CANNOT BE LOCATED @ OUTSIDE DRIFLINE, PROVIDE CLEAN ROOT CUTTING, TRUNK PROTECTION, AND LOCATE FENCE ACCORDING TO PLAN.
- DRIFLINE VARIES
- TENSIONER, COATED WIRE OR NYLONE ROPE TO KEEP FENCE TIGHT
- TREE PROTECTION FENCING: 4" ORANGE SHOWN FENCING, FASTEN TO POSTS WITH GALVANIZED WIRE TIES
- POSTS: 7" U-CHANNEL, 1.12 LB/FOOT STRENGTH PAINTED OR GALVANIZED

- NOTES:**
- TREE PROTECTION FENCING SHALL BE INSTALLED PRIOR TO DEMOLITION IN LOCATIONS SHOWN ON PLAN AND SHALL BE MAINTAINED FOR THE DURATION OF THE CONSTRUCTION PERIOD. TREE PROTECTION FENCING MAY BE RELOCATED AS NECESSARY WITH APPROVAL FROM THE LANDSCAPE ARCHITECT.
  - CONTRACTOR SHALL NOT STORE MATERIALS, EQUIPMENT OR PARK VEHICLES IN TREE PROTECTION ZONES. THE FENCE SHALL PREVENT TRAFFIC MOVEMENT AND THE PLACEMENT OF TEMPORARY FACILITIES, EQUIPMENT, STOCKPILES AND SUPPLIES FROM HARMING VEGETATION WITHIN THE LIMITS OF PROTECTION.
  - WHERE WORK IS TO OCCUR IN TREE PROTECTION ZONES, PLACE 4" DEPTH ORGANIC WOOD MULCH WITHIN TREE PROTECTION FENCING FOR MOISTURE PRESERVATION WHERE EXISTING GROUND COVER IS DISTURBED.
  - PLACE TREE PROTECTION WITHIN DRIFLINE WHEN FULL DRIFLINE PROTECTION IS NOT FEASIBLE DUE TO EXISTING PAVEMENT OR OTHER OBSTACLES.
  - NO PRUNING SHALL BE PERFORMED EXCEPT WHERE APPROVED BY APPROVED LANDSCAPE ARCHITECT AND PERFORMED BY ISA CERTIFIED ARBORIST.

**DF/**  
**DAMON FARBER**  
**LANDSCAPE ARCHITECTS**

310 South 4th Avenue, Suite 7050  
 Minneapolis, MN 55415  
 p: 612.332.7322

100% CONSTRUCTION DOCUMENTS  
 2/27/22

**SIX MILE MARSH PRAIRIE TRAIL**

MINNEAPOLIS, MN

I hereby certify that this document was prepared by me or under my direct supervision and that I am a duly Licensed Landscape Architect under the laws of the State of Minnesota.

Name: Thomas Wilbeck  
 Registration #: 28702  
 Signature: [Signature]  
 Date: 2/27/22

Date: 2/27/22  
 Drawn by: [Name]  
 Checked by: JR, JH, JD  
 Revision:

**TREE PRESERVATION PLAN & NOTES**

**L-004**

# DF/

**DAMON FARBER  
LANDSCAPE ARCHITECTS**

310 South 4th Avenue, Suite 7050  
Minneapolis, MN 55415  
p. 612.332.7522

### AREA SUMMARY

MAXIMUM DISTURBED AREA	3.00 AC	
(DISTURBED AREA INCLUDED AREA WITHIN WORK LIMITS)		
	EXISTING	PROPOSED
IMPERVIOUS SURFACE	8947 SF	41,936 SF
* NET CHANGE OF 33,104 SF MORE PERVIOUS SURFACE AREA		

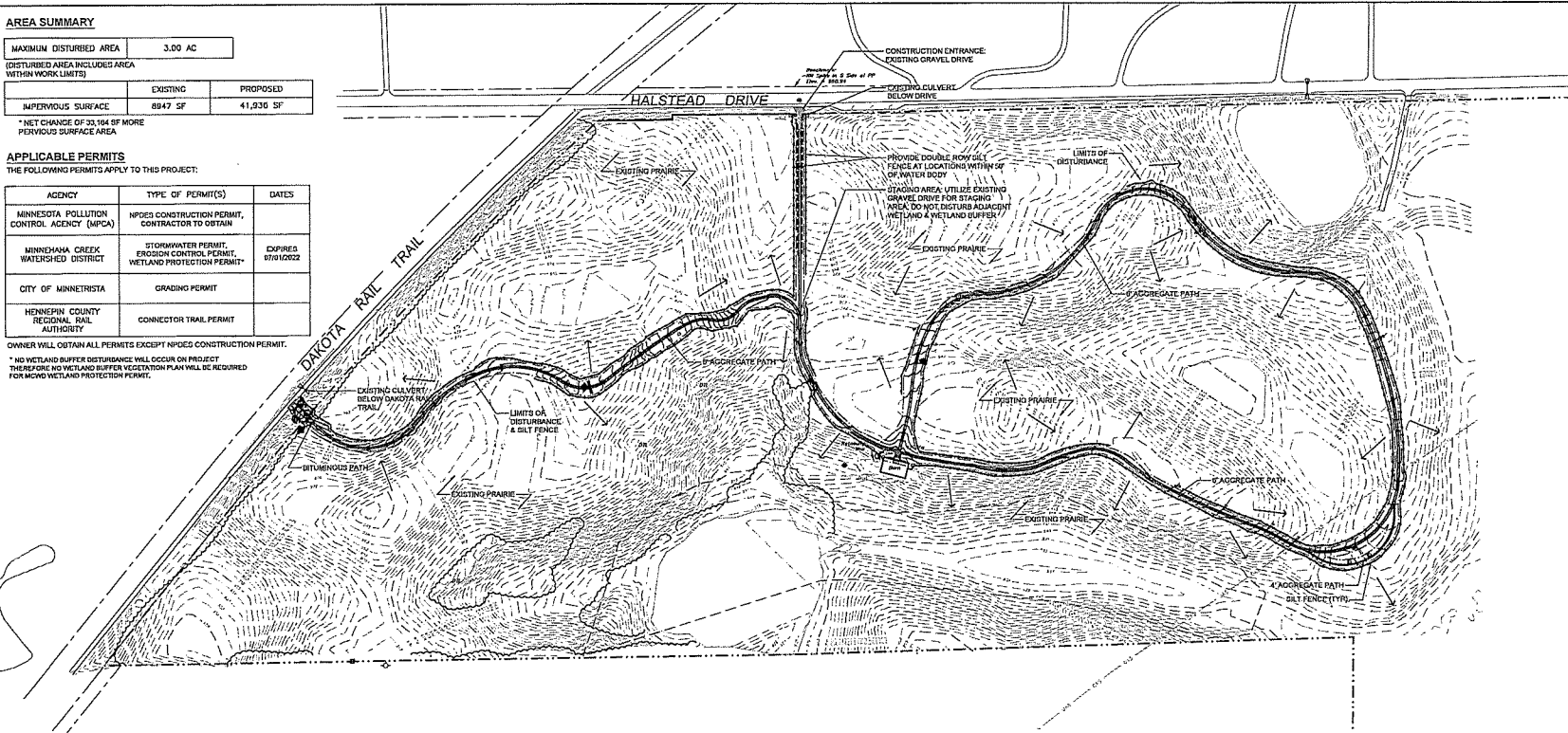
### APPLICABLE PERMITS

THE FOLLOWING PERMITS APPLY TO THIS PROJECT:

AGENCY	TYPE OF PERMIT(S)	DATES
MINNESOTA POLLUTION CONTROL AGENCY (MPCA)	NPODES CONSTRUCTION PERMIT, CONTRACTOR TO OBTAIN	
MINNEHAHA CREEK WATERSHED DISTRICT	STORMWATER PERMIT, EROSION CONTROL PERMIT, WETLAND PROTECTION PERMIT*	EXPIRES 8/18/2022
CITY OF MINNETRISTA	GRADING PERMIT	
HENNEPIN COUNTY REGIONAL RAIL AUTHORITY	CONNECTOR TRAIL PERMIT	

OWNER WILL OBTAIN ALL PERMITS EXCEPT NPODES CONSTRUCTION PERMIT.

\* NO WETLAND BUFFER DISTURBANCE WILL OCCUR ON PROJECT. THEREFORE, NO WETLAND BUFFER VEGETATION PLAN WILL BE REQUIRED FOR MPCA WETLAND PROTECTION PERMIT.



100% CONSTRUCTION DOCUMENTS  
2/2022

## SIX MILE MARSH PRAIRIE TRAIL

MINNETRISTA, MN

I hereby certify that this document was prepared by me or under my direct supervision and that I am a duly Licensed Landscape Architect under the laws of the State of Minnesota.

Name: Thomas Whitlock  
Registration #: 20202  
Signature: [Signature] Date: 2/20/22

Date: 2/20/22  
DPI Project #: 21-131  
Scale: VARIABLE  
Drawn/Checked: JLH\_dfl\_jb

REVISION


SWPPP

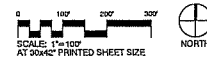
L-006

### SWPPP NOTES

- SEE SHEET L007 FOR PROJECT SPECIFIC SWPPP NOTES.
- STORMWATER: CONTRACTOR WILL PLACE TEMPORARY FENCE AND SEDIMENT CONTROL LOG PRIOR TO ANY WORK ON SITE. THE SEDIMENT CONTROL LOG WILL REMAIN IN PLACE UNTIL ALL DISTURBED AREAS ARE STABILIZED.
- STOCKPILED MATERIALS SHALL BE LOCATED AS DIRECTED BY LANDSCAPE ARCHITECT/OWNER AND WITH PERIMETER PROTECTION, AS NEEDED (INCIDENTAL).
- CLEAN SITE AND MAINTAIN CLEAN SITE CONDITIONS DAILY (INCIDENTAL).
- ALL DISTURBED SOILS MUST BE STABILIZED IMMEDIATELY IF SOILS ARE NOT TO BE WORKED WITHIN 24 HOURS (INCLUDING WEEKENDS AND HOLIDAYS) (INCIDENTAL).
- FINAL RESTORATION SHALL BE AS PER PRE-CONSTRUCTION CONDITION.
- ALL TEMPORARY BMPs MUST BE REMOVED AS PART OF THE FINAL STABILIZATION, UNLESS DIRECTED OTHERWISE BY THE LANDSCAPE ARCHITECT.
- REMOVE AND DISPOSE OF ALL DEBRIS OFF SITE.
- CONTRACTOR IS RESPONSIBLE FOR PROTECTING ALL EXISTING HISTORIC ELEMENTS DURING CONSTRUCTION.
- SEED DISTURBED AREAS ALONG CONSTRUCTION; DISTURBANCE WIDTH ALONG TRAIL VARIES; 20-30' MAX WIDTH. DISTURBANCE SHALL NOT EXCEED LIMITS OF WORK AND CONTRACT SHALL TAKE EXTRA PRECAUTIONS TO MINIMIZE AREA OF DISTURBANCE.
- CONTRACTOR IS RESPONSIBLE FOR OBTAINING THE NPODES PERMIT FROM THE MPCA.
- SEE SHEET L007 FOR FINAL STABILIZATION NOTES.
- SEE GRADING AND DRAINAGE PLAN FOR CONTOURS AND SPOT ELEVATION, AND DRAINAGE ARROWS INDICATING DIRECTION OF FLOW.
- EROSION CONTROL BIOLOG IS REQUIRED ON THE DOWN GRADIENT OF TRAIL CONSTRUCTION ONLY. WHERE DOWN GRADIENT OCCURS ON BOTH SIDES OF TRAIL, PROVIDE EROSION CONTROL METHODS ON EACH SIDE AS SHOWN. BIOLOG IS SHOWN OUTSIDE OF LIMITS OF DISTURBANCE FOR GRAPHIC CLARITY ONLY. PLACE BIOLOGS AT LIMITS OF DISTURBANCE ALONG LOCATIONS INDICATED ON PLAN.

### LEGEND




- PROPERTY LINE
- TRIPLE PROTECTION FENCE
- LIMITS OF DISTURBANCE
- BIOLOG-TYPE WOOD CHIP
- ◆ APPROXIMATE GEOTECH BORING LOCATION
- ← EXISTING SITE DRAINAGE
- ← PROPOSED TRAIL DRAINAGE
- 75' WETLAND BUFFER W/ ISOLANCE PROVIDED BY MINNEHAHA CREEK WATERSHED DISTRICT - NOT IN CONTRACT





SYMBOL	PAVING DESCRIPTION	QTY	DETAIL	MATERIAL PROFILE/ASSEMBLY	MANUFACTURER	PRODUCT/MODEL	COMMENTS	LEGATION	SPEC #
<b>[K-01]</b>	PAVING TYPE 1 - AGGREGATE	35,217 SF	16-500	2" THK LIMESTONE TRAIL MIX OVER 6" COMPACTED CLASS 5 BASE OVER COMPACTED SUBGRADE	REGIONAL SOURCE	LIMESTONE TRAIL MIX - 3/8" MINUS	SEE SPECIFICATIONS FOR TRAIL SURFACE GRADATION, PROVIDE GEOTEXTILE FABRIC TYPE 3 AT LOW LYING AREA INDICATED ON PLAN		32 15 46
<b>[K-02]</b>	PAVING TYPE 2 - BITUMINOUS	650 SF	2L-300	3" THK BITUMINOUS PAVING OVER 6" THK CLASS 5 BASE OVER GEOTEXTILE FABRIC				REGIONAL TRAIL ENTRANCE	32 12 00
SITE FURNITURE									
SYMBOL	DESCRIPTION	QTY	DETAIL	MATERIAL PROFILE/ASSEMBLY	MANUFACTURER	PRODUCT/MODEL	COLOR/FINISH	COMMENTS	SPEC #
<b>[S-01]</b>	PICNIC TABLE	2	0L-500	6" HEAVY DUTY TABLE, TREATED WOOD TOP & BELSON METAL FRAME		PARK MASTER-UNIVERSAL ACCESS 400P	TREATED WOOD TOP, GALVANIZED STEEL FRAME	SECURE WITH CHAIN ANCHOR POST, SEE SPEC	32 23 00
<b>[S-02]</b>	BIKE RACK	2		HOOP BIKE RACK, EMBEDDED	DERO		STAINLESS STEEL	EMBEDDED W/ EPOXY GROUT PER MFR	32 23 00
TREE PRESERVATION									
SYMBOL	DESCRIPTION	QTY	DETAIL						
	REMOVE TREE	4							
	TREE PROTECTION FENCE	204 LP	16-604						
ALTERNATE									
SYMBOL	DESCRIPTION	QTY	DETAIL						
	ADD ALTERNATE #1: PROVIDE TRANSECT INTERPRETIVE FEATURE	1 LS	L201						
	ADD ALTERNATE #2: PROVIDE BARN INTERPRETIVE FEATURE	1 LS	L201						
	ADD ALTERNATE #3: PROVIDE CUSTOM LOUNGERS	1 LS	L201						
	ADD ALTERNATE #4: PROVIDE WATERSHED MAP INTERPRETIVE FEATURE	1 LS	L201						
	ADD ALTERNATE #5: PROVIDE DECOMPOSED GRANITE IN LIEU OF LIMESTONE TRAIL MIX AT PAVING TYPE P-01	217.4 CY	16-500						

**PLANT SCHEDULE**

GROUND COVER	CODE	QTY	BOTANICAL / COMMON NAME	REMARKS
		1,741 SF	WOODLAND EDGE NATIVE SEED MIX: MNDOT 36-211 AT 24.5 LBS/ACRE	PROVIDE COVER CROP -SPRING SEEDING: OATS AT 25 LBS/AC -FALL SEEDING (AUG 1 - OCT 15): WINTER WHEAT AT 25 LBS/ACRE
		75,880 SF	MESIC PRAIRIE SEED MIX: MNDOT 35-241 AT 30.35 LBS/AC	PROVIDE COVER CROP -SPRING SEEDING: OATS AT 25 LBS/AC -FALL SEEDING (AUG 1 - OCT 15): WINTER WHEAT AT 25 LBS/ACRE
		737 SF	COMPACTED TRAIL SEED MIX: BWR PILOT MIX-COMPACTED TRAIL GENERAL SEED AT 30.03 LBS/ACRE	PROVIDE COVER CROP -SPRING SEEDING: OATS AT 30 LBS/AC -FALL SEEDING (AUG 1 - OCT 15): WINTER WHEAT AT 25 LBS/ACRE

**DF/**

**DAMON FARRER  
LANDSCAPE ARCHITECTS**

310 South 4th Avenue, Suite 7056  
Minneapolis, MN 55415  
# 612.332.7222

100% CONSTRUCTION DOCUMENTS  
2/9/2022

**SIX MILE  
MARSH  
PRAIRIE TRAIL**

MINNETRISTA, MN

I hereby certify that the enclosed was prepared by me or under my direct supervision and that I am a duly licensed Landscape Architect under the laws of the State of Minnesota.

Name: Thomas Whitlock  
Registration #: 20292  
Signature: [Signature] Date: 2/9/2022

Date: 2/9/2022  
SIT Project #: 21-1131  
Scale: NARS1  
Drawn/Checked: JL\_BJL/AD

REVISION

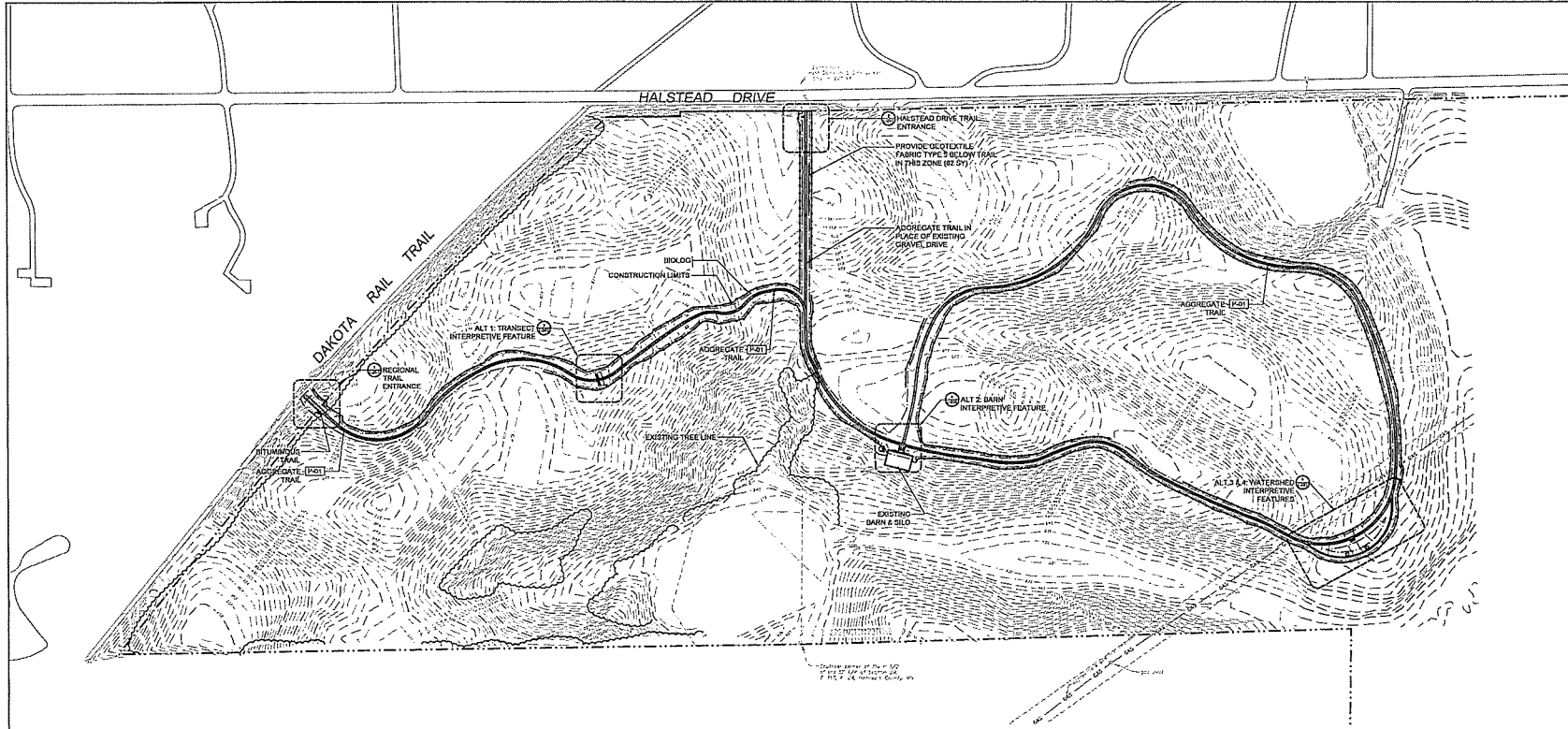

SCHEDULES

L-010

# DF/

**DAMON FARBER  
LANDSCAPE ARCHITECTS**

310 South 4th Avenue, Suite 7050  
Minneapolis, MN 55415  
612.333.7322



100% CONSTRUCTION DOCUMENTS  
2/9/2022

## SIX MILE MARSH PRAIRIE TRAIL

MINNETONKA, MN

I hereby certify that this document was prepared by me or under my direct supervision and that I am a duly Licensed Landscape Architect under the laws of the State of Minnesota.

Name: Thomas Whitbeck  
Registration #: 20220  
Signature: [Signature]  
Date: 2/9/2022

Date: 2/9/2022  
DFI Project #: 21-113  
Scale: 1/8"=1'-0"  
Drawn/Checked: JF, JAV, AD

REVISIONS:  
\_\_\_\_\_  
\_\_\_\_\_  
\_\_\_\_\_

### SITE PLAN

# L-100

### NOTES

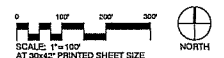
1. CONTRACTOR TO SURVEY-LOCATE AND STAKE PATH ALIGNMENT IN FIELD. DIGITAL FILE TO BE PROVIDED FOR USE.
2. LA TO REVIEW STAKED PATH FOR APPROVAL OF TRAIL LAYOUT PRIOR TO EXCAVATION.
3. REFER TO GENERAL NOTES & GRADING PLAN FOR REQUIREMENTS OF WORK NEAR GAS LINE EASEMENT.

### ALTERNATES:

1. ADD ALTERNATE #1: PROVIDE TRANSECT INTERPRETIVE FEATURE, SEE L201.
2. ADD ALTERNATE #2: PROVIDE BARN INTERPRETIVE FEATURE, SEE L201.
3. ADD ALTERNATE #3: PROVIDE CUSTOM LOUNGERS, SEE L201.
4. ADD ALTERNATE #4: PROVIDE WATERSHED MAP INTERPRETIVE FEATURE, SEE L201.
5. ADD ALTERNATE #5: PROVIDE DECOMPOSED GRANITE IN LIEU OF LIMESTONE TRAIL MIX AT PAVING TYPE P-01, SEE DETAIL 14.501.

### LEGEND

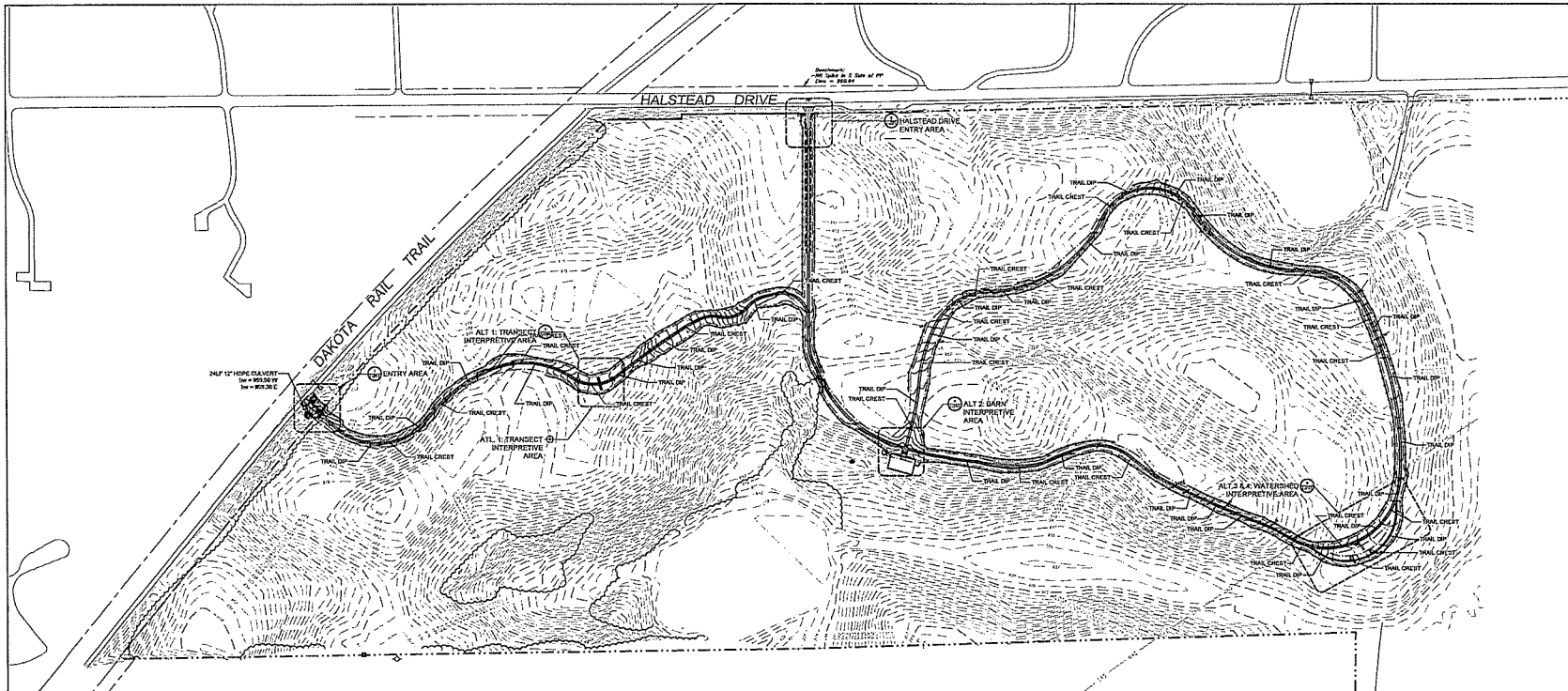
- PROPERTY LINE
- TREE PROTECTION FENCE
- LIMITS OF DISTURBANCE
- BIOLOGIC-TYPE WOOD CHIP
- LIMITS OF ALTERNATE FEATURE
- [Symbol] PAVING TYPE 1 - AGGREGATE
- [Symbol] PAVING TYPE 2 - BITUMINOUS



# DF/

**DAMON FARBER  
LANDSCAPE ARCHITECTS**

318 South 4th Avenue, Suite 7050  
Minneapolis, MN 55415  
p. 612.333.7522



100% CONSTRUCTION DOCUMENTS  
2/8/2022

## SIX MILE PRAIRIE TRAIL

MINNETRISTIA, MN

I hereby certify that this document was prepared by me or under my direct supervision and that each of the licensed Landscape Architects under the laws of the State of Minnesota.

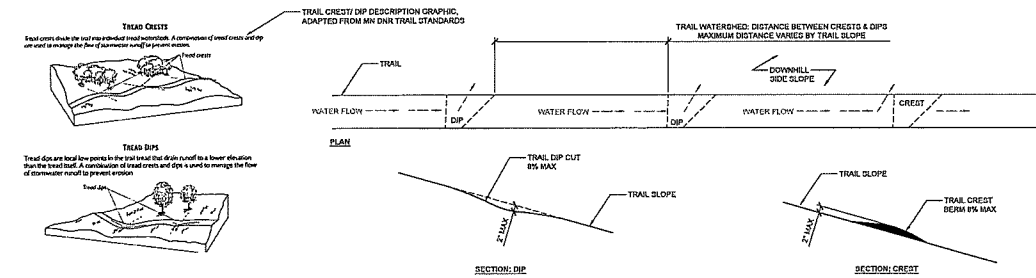
Name	Thomas Wetlock
Registration #	26292
Date	2/8/22

Date	2/8/22
DT Project #	21-101
Scale	VARIABLE
Drawn/Checked	JL_BJL/JS

REVISION


GRADING &  
DRAINAGE  
PLAN

L-101



1 TRAIL DIP & CREST DETAIL  
MS

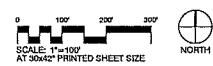
P21.01-109

### NOTES

- TRAIL CROSS SLOPE SHALL NOT EXCEED 2%.
- DIPS AND CRESTS: TRAIL ROUTE SHALL UNDULATE WITH BOTH DIPS & CRESTS TO SUPPORT DRAINAGE & DIVERT WATER OFF TRAIL. SLOPE FOR DIPS & CRESTS SHALL NOT EXCEED 8% WITH CROSS-SLOPES NOT TO EXCEED 2%. DIPS SHALL NOT HOLD WATER OR BE WET AREAS. REFER TO DETAILS. SEE DETAIL THIS SHEET.
- TRAIL DIP & CREST LOCATIONS TO BE STAKED BY CONTRACTOR AFTER SUBMITTING AND REVIEWED IN FIELD BY LANDSCAPE ARCHITECT FOR APPROVAL.
- WORK NEAR GAS LINE EASEMENT:
- NORTHERN NATURAL GAS (NNG) REPRESENTATIVE TO BE PRESENT AT ALL TIMES WHEN EXCAVATION WORK IS BEING PERFORMED WITHIN 25 FEET AROUND THE PIPELINE.
- CONTRACTOR TO CONTACT ANTONIO GALLOVICH (507.676.7451) MIN 48HRS PRIOR TO WORK WITHIN 25' OF GAS LINE AND TO REQUEST REPRESENTATIVE TO BE ON SITE.

### LEGEND

- PROPERTY LINE
- TREE PROTECTION FENCE
- LIMITS OF DISTURBANCE
- ECOLOG. TYPE WOOD CHIP
- DIXLX PROPOSED SPOT ELEVATION
- EXISTING SITE DRAINAGE
- PROPOSED TRAIL DRAINAGE



**SIX MILE  
MARSH  
PRAIRIE TRAIL**

MINNETRISTA, MN

I hereby certify that this document was prepared by me or under my direct supervision and that I am a duly Licensed Landscape Architect under the laws of the State of Minnesota.

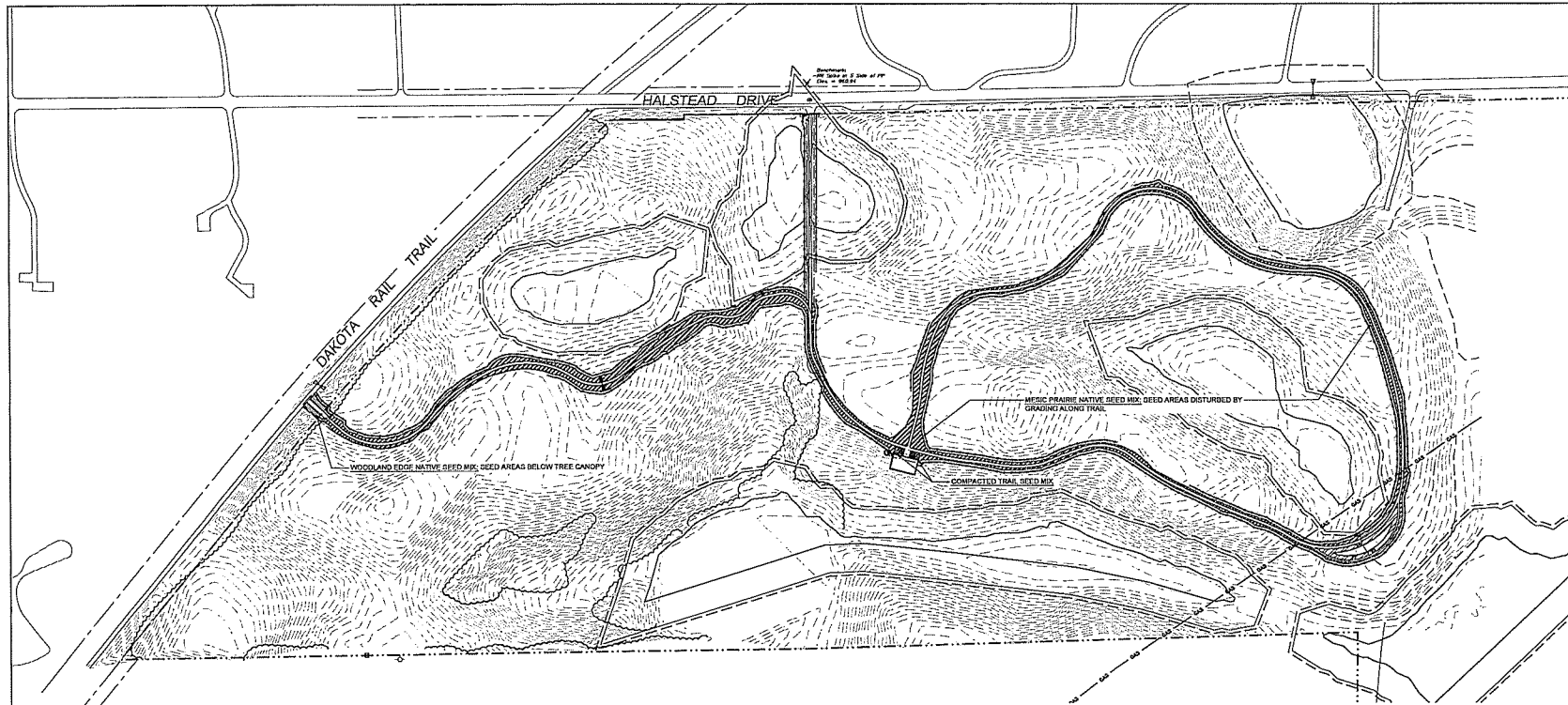
Name: Thomas V. Farber  
Registration #: 252762  
Signature: *[Signature]* Date: 2/8/2022

Date: 2/8/2022  
SPL Project #: 21-133  
Scale: N/A  
Drawn/Checked: JF, JF, JF  
Date: \_\_\_\_\_

REVISION  
\_\_\_\_\_  
\_\_\_\_\_  
\_\_\_\_\_

**SEEDING  
PLAN**




**L-120**








**NOTES**

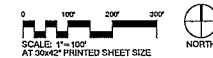
1. PREPARE SOIL PER NATIVE SEEDING SPECIFICATIONS AND PROTECT SEEDED AREA WITH CERTIFIED WEED FREE, MIDDY TYPE 3 STRAW OR CATEGORY 20, NATURAL-NET EROSION CONTROL BLANKET (SLOPES 3:1+). REFER TO SPECIFICATIONS.

**PLANTING LEGEND**

-  WOODLAND FOGG NATIVE SEED MIX  
MIDDY 30:1 TV BUNKER AT 24.0 LBS/ACRE  
PROVIDE COVER CROP  
-SPRING SEEDING: OATS AT 25 LBS/AC  
-FALL SEEDING (AUG 1 - OCT 15): WINTER WHEAT AT 25 LBS/ACRE  
-W CATEGORY 20 EROSION CONTROL BLANKET
-  MIDC PRAIRIE SEED MIX  
MIDDY 30:1 TV BUNKER AT 24.0 LBS/ACRE  
PROVIDE COVER CROP  
-SPRING SEEDING: OATS AT 25 LBS/AC  
-FALL SEEDING (AUG 1 - OCT 15): WINTER WHEAT AT 25 LBS/ACRE  
-W TYPE 3 MULCH @ 2 TONS/ ACRE
-  COMPACTED TRAIL SEED MIX  
BUNKER FILL MIX; COMPACTED TRAIL GENERAL SEED AT 50.0 LBS/ACRE  
PROVIDE COVER CROP  
-SPRING SEEDING: OATS AT 30 LBS/AC  
-FALL SEEDING (AUG 1 - OCT 15): WINTER WHEAT AT 25 LBS/ACRE  
-W TYPE 3 MULCH @ 2 TONS/ ACRE

**LEGEND**

-  PROPERTY LINE
-  TREE PROTECTION FENCE
-  LIMITS OF DISTURBANCE
-  BIDLOG - TYPE WOOD CHIP
-  PROPOSED SPOT ELEVATION



# DF/

**DAMON FARBER  
LANDSCAPE ARCHITECTS**

310 South 4th Avenue, Suite 7050  
Minneapolis, MN 55415  
P: 612.322.7322

100% CONSTRUCTION DOCUMENTS  
2/9/2022

**SIX MILE  
MARSH  
PRAIRIE TRAIL**

MINNETRISTA, MN

I hereby certify that this document was prepared by me or under my direct supervision and that I am a duly licensed Landscape Architect under the laws of the State of Minnesota.

Name: Thomas Whitlock  
Registration No.: 16213  
Date: 2/9/2022

Date: 2/9/2022  
SPT Number: 21-113  
Scale: NONE  
Drawn/Checked: JL\_DJL/JS

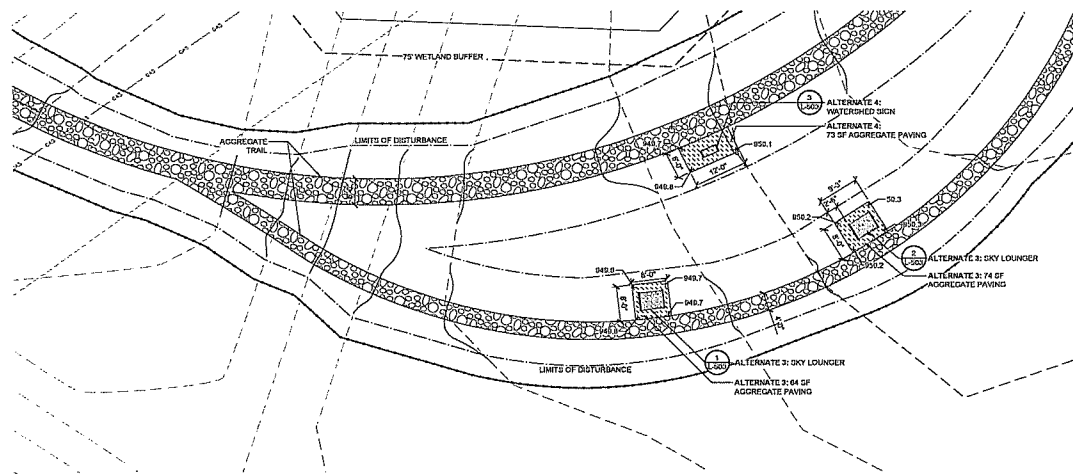
REVISION  
\_\_\_\_\_  
\_\_\_\_\_  
\_\_\_\_\_

ENLARGED  
PLANS

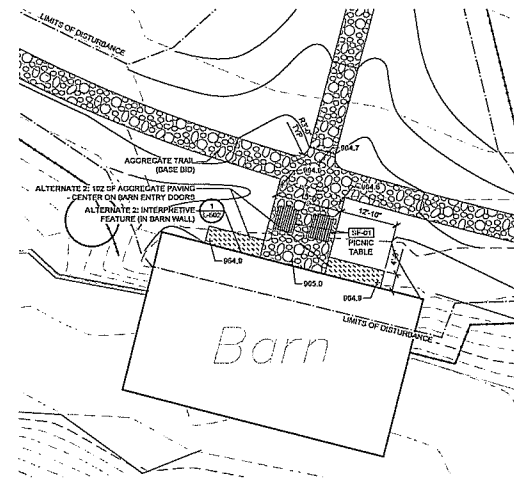
L-201

**LEGEND**

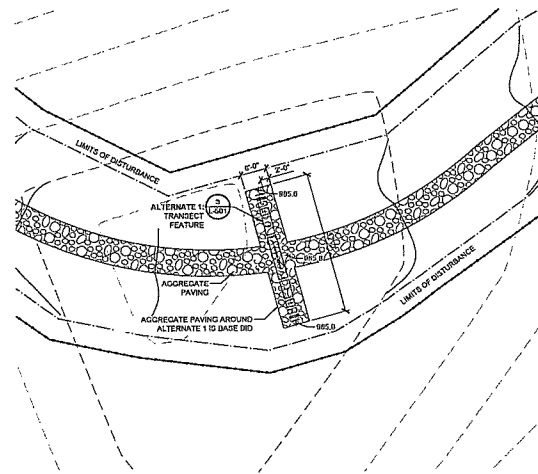
- PROPERTY LINE
- TREE PROTECTION FENCE
- EXISTING TREE
- LIMITS OF DISTURBANCE
- PAVING TYPE 1 - AGGREGATE
- PAVING TYPE 2 - BITUMINOUS



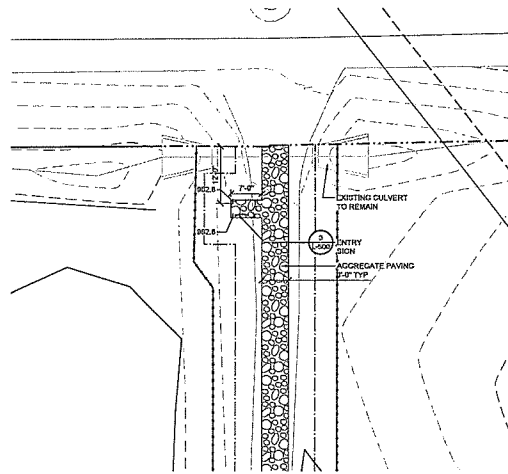
5 ALTERNATE 3 & 4: WATERSHED INTERPRETIVE AREA - ENLARGEMENT



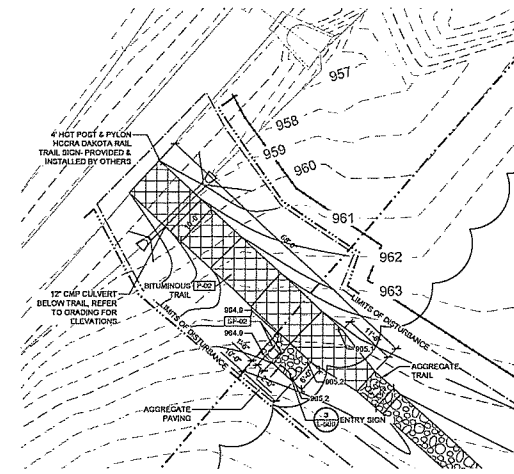
4 ALTERNATE 2: BARN INTERPRETIVE AREA - ENLARGEMENT



3 ALTERNATE 1: TRANSECT INTERPRETIVE AREA - ENLARGEMENT



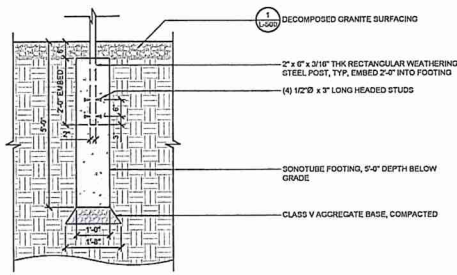
2 HALSTEAD DRIVE ENTRY AREA - ENLARGEMENT



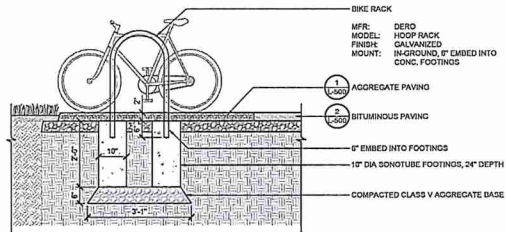
1 REGIONAL TRAIL ENTRANCE - ENLARGEMENT







5 DETAIL - TYPICAL CONCRETE FOOTING W STEEL POST EMBED  
3/8" x 1/8"



4 DETAIL - SF-02, BIKE RACK  
3/8" x 1/8"

**ENTRY AND INTERPRETIVE SIGNAGE FEATURE GENERAL NOTES:**

- CONTRACTOR TO SUBMIT SHOP DRAWINGS OF SIGNAGE, ARTWORK & MOCK UP FOR APPROVAL BY LANDSCAPE ARCHITECT PRIOR TO FABRICATION. MOCKUP SAMPLE SHALL REPRESENT FINISHES, PRINTING OF LETTERING & ARTWORK, AND FASTENER & CONNECTION QUALITY FOR APPROVAL.
- EXPOSED FASTENERS SHALL BE 1/2" DIA SS BUTTON, SOCKET HEAD CAP SCREWS UNLESS NOTED OTHERWISE.
- FOOTING SHALL BE SONOTUBE, SIZE AS INDICATED, MIN 2" COVER AROUND EMBEDDED POSTS.

**SIGN CONSTRUCTION:**

- ADHERED STAINLESS STEEL LETTERING SHALL BE 1/2" THICK, 1-5/8" HEIGHT UNLESS NOTED OTHERWISE. ADHERE W/ WEATHER-RESISTANT EPOXY BONDING AGENT, SUITABLE FOR BONDING TO STAINLESS STEEL AND WEATHERING STEEL METALS.
- LETTERING SHALL BE LASER BONDED USING THERMARK LASER BONDING OR SIMILAR PROCESS. LASER BONDED LETTERING AND GRAPHICS SHALL BE SUITABLE FOR OUTDOOR USE & DURABILITY AGAINST SCRATCHING, BURNING, AND EXTREME WEATHER.
- FINAL MESSAGING AND FONT TO BE PROVIDED BY LANDSCAPE ARCHITECT

**TEXT:**

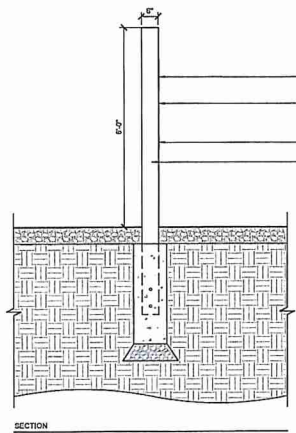
- ADHERED STAINLESS STEEL LETTERING SHALL BE 1/2" THICK, 1-5/8" HEIGHT UNLESS NOTED OTHERWISE. ADHERE W/ WEATHER-RESISTANT EPOXY BONDING AGENT, SUITABLE FOR BONDING TO STAINLESS STEEL AND WEATHERING STEEL METALS.
- LETTERING SHALL BE LASER BONDED USING THERMARK LASER BONDING OR SIMILAR PROCESS. LASER BONDED LETTERING AND GRAPHICS SHALL BE SUITABLE FOR OUTDOOR USE & DURABILITY AGAINST SCRATCHING, BURNING, AND EXTREME WEATHER.
- FINAL MESSAGING AND FONT TO BE PROVIDED BY LANDSCAPE ARCHITECT

**IMAGES/GRAPHICS:**

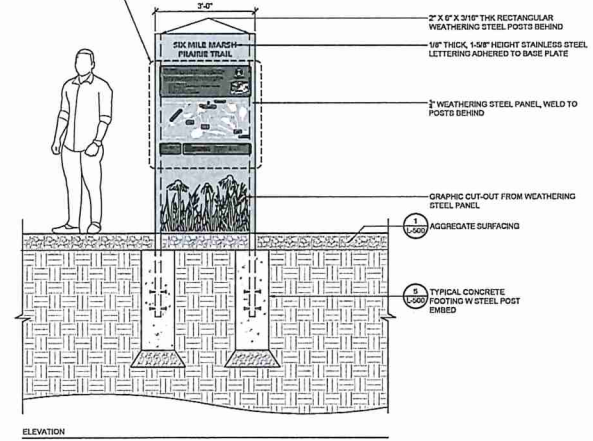
- FINAL ARTWORK TO BE PROVIDED BY LANDSCAPE ARCHITECT
- PAINTED GRAPHICS SHALL BE LASER-BONDED USING THERMARK LASER BONDING OR SIMILAR PROCESS. LASER BONDED LETTERING AND GRAPHICS SHALL BE SUITABLE FOR OUTDOOR USE & DURABILITY AGAINST SCRATCHING, BURNING, AND EXTREME WEATHER.



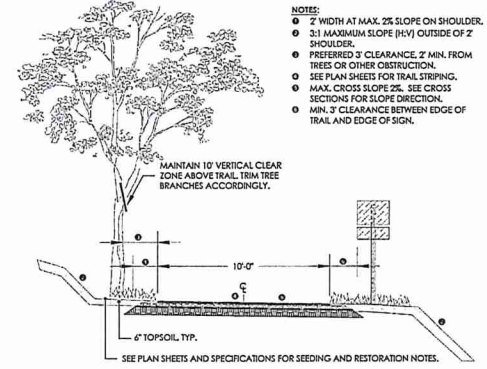
SIGN DETAIL ENLARGEMENT



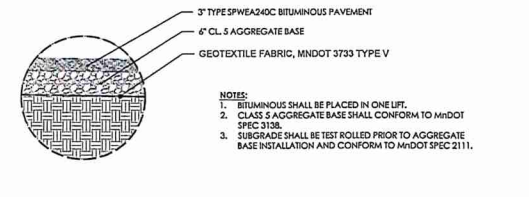
3 DETAIL - METAL INFORMATION SIGN SPECIAL  
3/8" x 1/8"



1 DETAIL - P-01, AGGREGATE PAVING  
3/8" x 1/8"

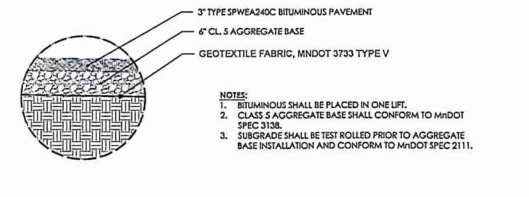
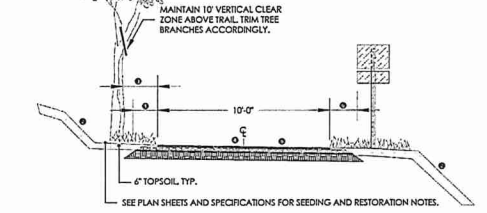


2 DETAIL - P-02, BITUMINOUS PAVING  
1/2" x 1/8"



1 DETAIL - P-01, AGGREGATE PAVING  
3/8" x 1/8"

- NOTES:**
- 2" WIDTH AT MAX. 2% SLOPE ON SHOULDER.
  - 3:1 MAXIMUM SLOPE (H:V) OUTSIDE OF 2" SHOULDER.
  - PREFERRED 3' CLEARANCE, 2' MIN. FROM TREES OR OTHER OBSTRUCTION.
  - SEE PLAN SHEETS FOR TRAIL STRIPING.
  - MAX. CROSS SLOPE 2%. SEE CROSS SECTIONS FOR SLOPE DIRECTION.
  - MIN. 3' CLEARANCE BETWEEN EDGE OF TRAIL AND EDGE OF SIGN.



**DF/**  
DAMON FARBER  
LANDSCAPE ARCHITECTS  
310 South 4th Avenue, Suite 7050  
Minneapolis, MN 55415  
612.332.7322

100% CONSTRUCTION DOCUMENTS  
2/9/2022

SIX MILE  
MARSH  
PRAIRIE TRAIL

MINNETRISTA, MN

I hereby certify that this document was prepared by me or under my direct supervision and that I am a duly licensed Landscape Architect under the laws of the State of Minnesota.

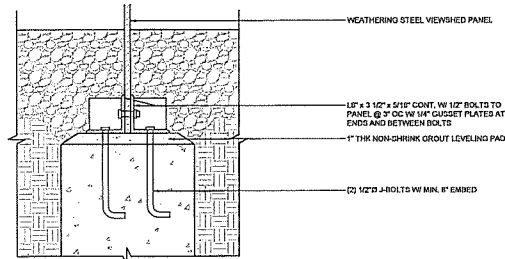
Name: Thomas Willock  
Registration #: 26232  
Signature: [Signature]  
Date: 2/9/2022

Date: 2/9/2022  
DPI Project #: 21-131  
Scale: VARIOUS  
Drawn/Checked: JR, JAV, JDS

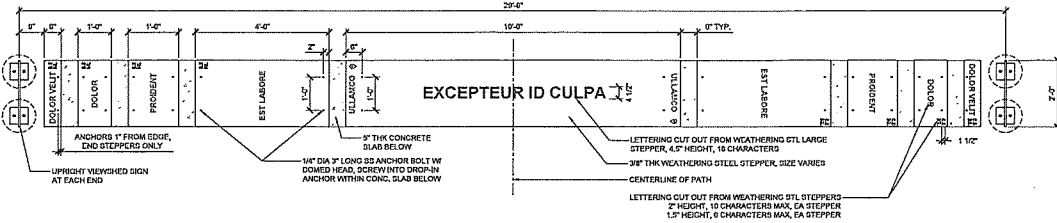
REVISION


LANDSCAPE  
DETAILS

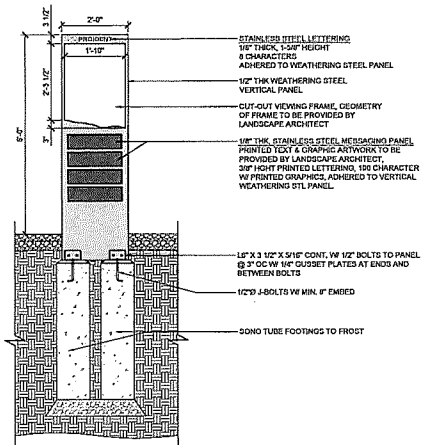
L-500



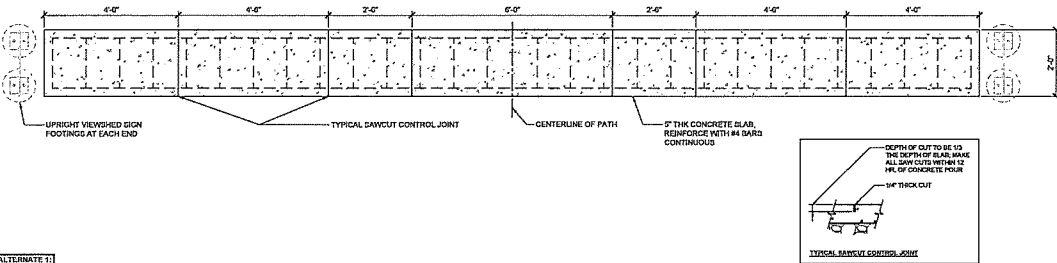
ALTERNATE 1  
6 DETAIL - UPRIGHT VIEWSHED SIGN @ FTG  
1/2\"/>



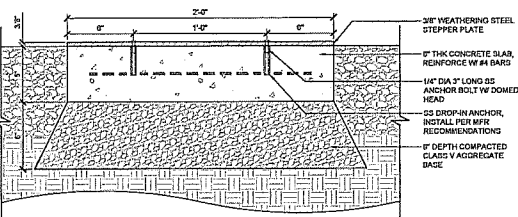
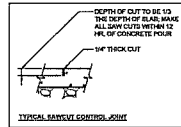
ALTERNATE 1  
3 DETAIL - TRANSECT PLAN, STL STEPPERS  
1/2\"/>



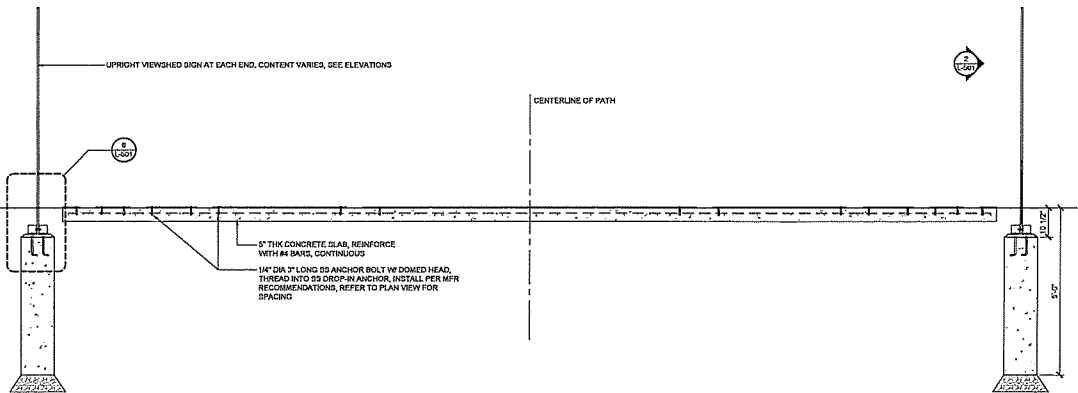
ALTERNATE 1  
5 DETAIL - UPRIGHT VIEWSHED SIGN  
3/4\"/>



ALTERNATE 1  
2 DETAIL - TRANSECT PLAN, CONCRETE SLAB  
1/2\"/>



ALTERNATE 1  
4 DETAIL - STL STEPPER TYPICAL SECTION  
1/2\"/>



ALTERNATE 1  
1 DETAIL - TRANSECT SECTION  
1/2\"/>

## SIX MILE MARSH PRAIRIE TRAIL

MINNETRISTA, MN

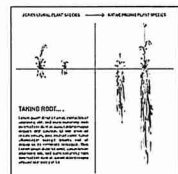
I declare under penalty that this document was prepared by me or under my direct supervision and that I am a duly licensed Landscape Architect under the laws of the State of Minnesota.

Name: Thomas Whitlock  
Registration #: 26202  
Signature: [Signature]  
Date: 2/9/2022

Date: 2/9/2022  
DWG Project #: 21-133  
Scale: NARS  
Drawn/Checked: JF, JH, JD

REVISION

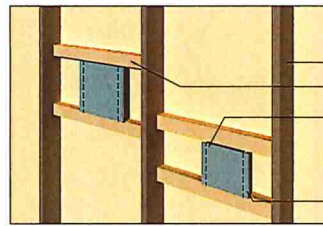
### ALTERNATE 2 LANDSCAPE DETAILS



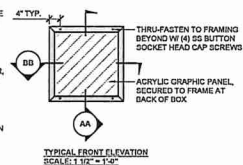
ACRYLIC GRAPHIC INTERIOR PANEL EXAMPLE

INTERIOR ACRYLIC GRAPHIC PANEL TO BE LASER ENGRAVED, CONTENT & ARTWORK TO BE PROVIDED BY LANDSCAPE ARCHITECT.  
MANUFACTURER SHALL HAVE THE ABILITY TO CLEARLY ENGRAVE BOTH TEXT AND ILLUSTRATIVE CONTENT.

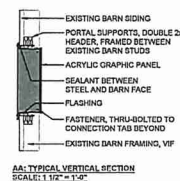
- GENERAL NOTES:**
- CONTRACTOR TO SUBMIT SHOP DRAWINGS OF SIGNAGE, ARTWORK & MOCK UP FOR APPROVAL BY LANDSCAPE ARCHITECT PRIOR TO FABRICATION. MOCKUP SAMPLE SHALL REPRESENT FINISHES, PRINTING OF LETTERING & ARTWORK, AND FASTENER & CONNECTION QUALITY FOR APPROVAL.
  - ADHERED STAINLESS STEEL LETTERING SHALL BE 1/2" THICK, 1-3/8" HEIGHT UNLESS NOTED OTHERWISE, ADHERE W/ WEATHER-RESISTANT EPOXY BONDING AGENT, SUITABLE FOR BONDING TO STAINLESS STEEL AND WEATHERING STEEL METALS.
  - LETTERING SHALL BE LASER-BONDED USING THERMARK LASER BONDING OR SIMILAR PROCESS. LASER BONDED LETTERING AND GRAPHICS SHALL BE SUITABLE FOR OUTDOOR USE & DURABILITY AGAINST SCRATCHING, BURNING, AND EXTREME WEATHER.
  - FINAL MESSAGING AND FONT TO BE PROVIDED BY LANDSCAPE ARCHITECT
- IMAGES/GRAPHICS:**
- FINAL ARTWORK TO BE PROVIDED BY LANDSCAPE ARCHITECT
  - PAINTED GRAPHICS SHALL BE LASER-BONDED USING THERMARK LASER BONDING OR SIMILAR PROCESS. LASER BONDED LETTERING AND GRAPHICS SHALL BE SUITABLE FOR OUTDOOR USE & DURABILITY AGAINST SCRATCHING, BURNING, AND EXTREME WEATHER.



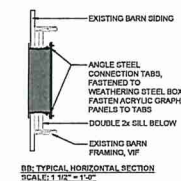
PERSPECTIVE ASSEMBLY



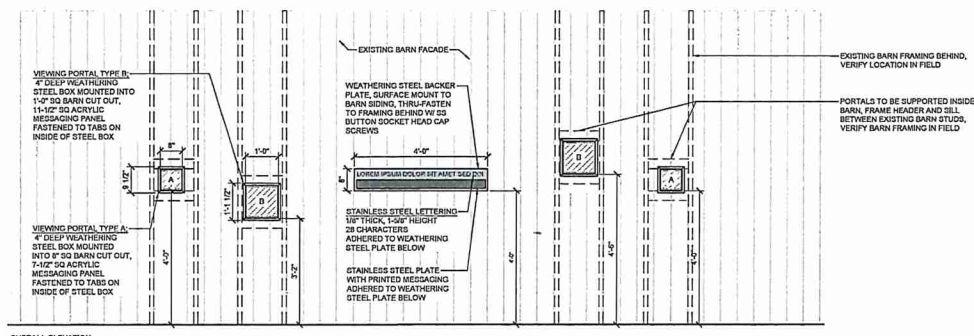
TYPICAL FRONT ELEVATION  
SCALE: 1/8" = 1'-0"



AA-TYPICAL VERTICAL SECTION  
SCALE: 1/8" = 1'-0"



BB-TYPICAL HORIZONTAL SECTION  
SCALE: 1/8" = 1'-0"

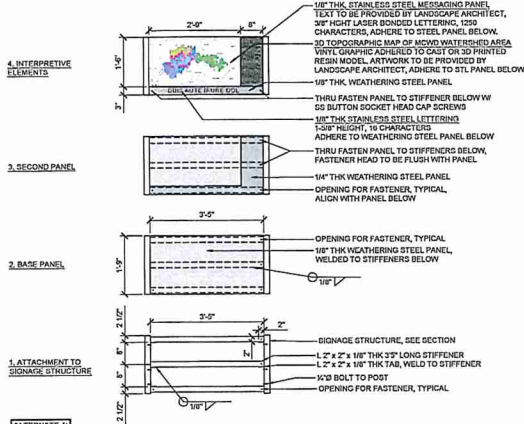


OVERALL ELEVATION

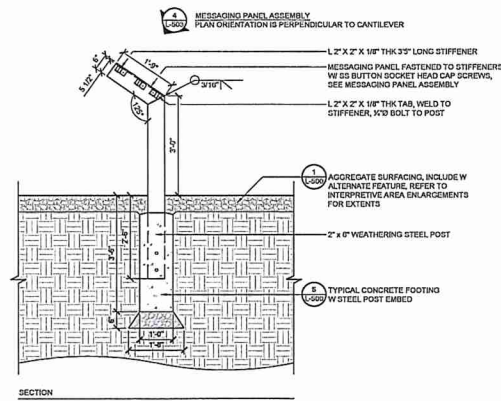
ALTERNATE 2  
DETAIL - VIEWING PORTALS

**GENERAL NOTES:**

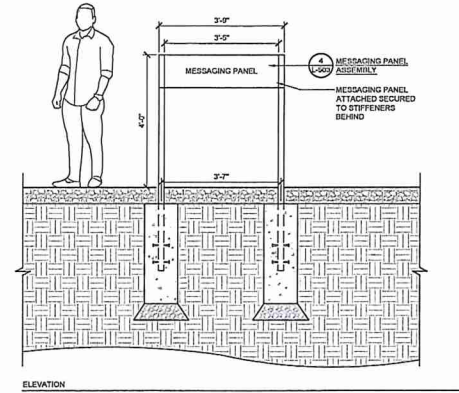
- CONTRACTOR TO SUBMIT SHOP DRAWINGS FOR APPROVAL BY LANDSCAPE ARCHITECT PRIOR TO FABRICATION. MOCKUP/SAMPLE SHALL REPRESENT FINISHES, PRINTING OF LETTERING & ARTWORK, AND FASTENER & CONNECTION QUALITY FOR APPROVAL.
- ADHERED STAINLESS STEEL LETTERING SHALL BE 1/8" THICK, 1-5/8" HEIGHT, ADHERE W/ WEATHER-RESISTANT EPOXY BONDING AGENT, SUITABLE FOR BONDING TO STAINLESS STEEL AND WEATHERING STEEL METALS.
- STAINLESS STEEL PANELS SHALL BE ADHERED W/ WEATHER-RESISTANT EPOXY BONDING AGENT, SUITABLE FOR BONDING TO STAINLESS STEEL AND WEATHERING STEEL METALS.
- LETTERING SHALL BE LASER-BONDED USING THERMARK LASER BONDING OR SIMILAR PROCESS. LASER BONDED LETTERING AND GRAPHICS SHALL BE SUITABLE FOR OUTDOOR USE & DURABILITY AGAINST SCRATCHING, BURNING, AND EXTREME WEATHER.
- FINAL MESSAGING AND FONT TO BE PROVIDED BY LANDSCAPE ARCHITECT
- 3D TOPOGRAPHIC MAP VENDOR TO WHITE CLOUDS, CONTACT AT SALES@WHITECLOUDS.COM, OR APPROVED EQUAL. FINAL ARTWORK DESIGN TO BE PROVIDED BY LANDSCAPE ARCHITECT



**4** **ALTERNATE 4**  
**DETAIL - MESSAGING PANEL ASSEMBLY**  
3/4" x 1/2"

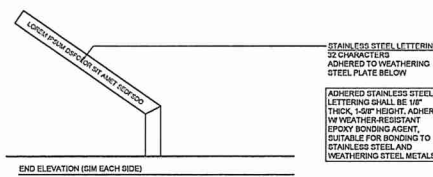


**3** **ALTERNATE 4**  
**DETAIL - WATERSHED MAP**  
3/4" x 1/2"



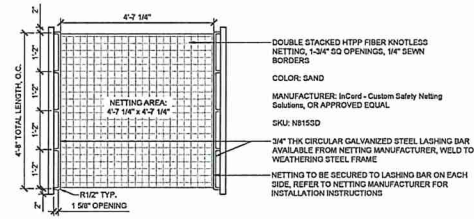
ELEVATION

P21.031.04



END ELEVATION (2X EACH SIDE)

END ELEVATION



PLAN

100% CONSTRUCTION DOCUMENTS  
2/9/2022

**SIX MILE  
MARSH  
PRAIRIE TRAIL**

MINNETRISTA, MN

I hereby certify that this document was prepared by me or under my direct supervision and that I am a duly licensed Landscape Architect under the laws of the State of Minnesota.

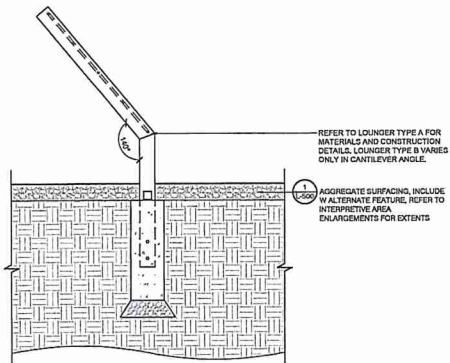
Name: Thomas Whittick  
Registration #: 202102  
Date: 2/9/2022  
Signature: [Signature]  
Date: [Date]

Date: 2/9/2022  
SPL Project #: 21-131  
Scale: ASBUILT  
Drawn/Checked: JH, JH, JH

REVISION	DATE

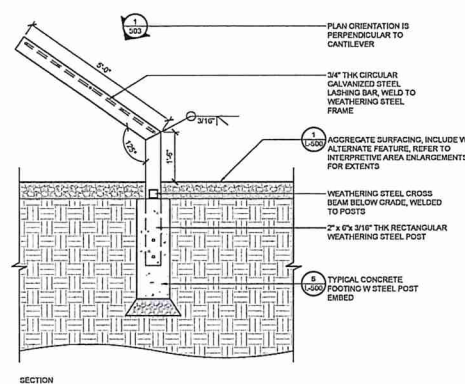
**ALTERNATE 3 & 4  
LANDSCAPE  
DETAILS**

**L-503**

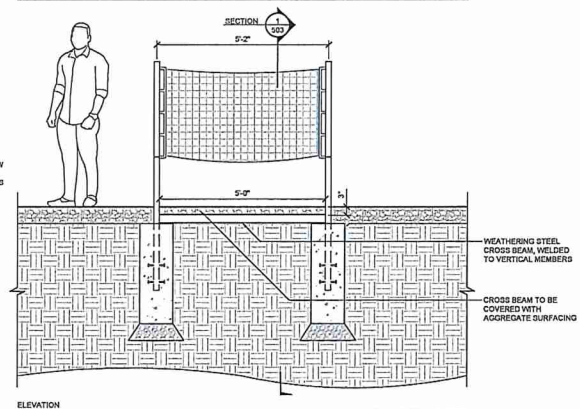


**2** **ALTERNATE 3**  
**DETAIL - LOUNGER TYPE B**  
3/4" x 1/2"

P21.031.04



**1** **ALTERNATE 3**  
**DETAIL - LOUNGER TYPE A**  
3/4" x 1/2"



ELEVATION

P21.031.04