

MEETING DATE: September 12, 2019

TITLE: Approval of Victoria Local Water Management Plan

RES. NUMBER: 19-079

PREPARED BY: Becky Christopher

E-MAIL: bchristopher@minnehahacreek.org

TELEPHONE: (952) 641-4512

REVIEWED BY: Administrator Counsel Program Mgr.
 Board Committee Engineer Other

WORKSHOP ACTION:

<input type="checkbox"/> Advance to Board mtg. Consent Agenda.	<input type="checkbox"/> Advance to Board meeting for discussion prior to action.
<input type="checkbox"/> Refer to a future workshop (date):_____	<input type="checkbox"/> Refer to taskforce or committee (date):_____
<input type="checkbox"/> Return to staff for additional work.	<input type="checkbox"/> No further action requested.
<input checked="" type="checkbox"/> Other: Requesting final action on September 12, 2019	

PURPOSE or ACTION REQUESTED:

Approval of the City of Victoria Local Water Management Plan

PROJECT/PROGRAM LOCATION:

City of Victoria

PROJECT TIMELINE:

June 4, 2018	Victoria LWMP first draft submitted to MCWD
August 2, 2018	MCWD comments and denial letter sent
January 11, 2019	Victoria LWMP revised draft submitted to MCWD
February 15, 2019	MCWD comments sent
July 25, 2019	Victoria LWMP final draft submitted to MCWD

PROJECT/PROGRAM COST:

N/A

PAST BOARD ACTION:

September 27, 2012	MCWD approval of Victoria local water management plan (12-087)
January 11, 2018	Approval and adoption of MCWD Watershed Management Plan for the implementation period 2018-2027 (18-004)

SUMMARY:

Background:

MN Statutes § 103B.235 and MN Rules § 8410.0160 grant watershed districts the authority to review and approve local water management plans (LWMPs). Under this framework, watershed districts can assign responsibilities to local government units (LGUs) for carrying out implementation actions defined in the

watershed plan. The LWMP is a required element of the LGU comprehensive land use management plan which LGU's were required to adopt by the end of 2018.

The Minnehaha Creek Watershed District (MCWD or District) adopted its new Watershed Management Plan (Plan) in January 2018. The Plan is rooted in the District's Balanced Urban Ecology policy (BUE) as the principal strategy to accomplish its mission. The BUE policy recognizes the inter-dependence of the natural and built environment and that both benefit through a holistic planning approach. The BUE policy establishes the guiding principles of focus in areas of highest resource needs, flexibility to respond to emerging opportunities as a result of land use change in real time, and pursuing clean water goals in partnership with our communities.

The Plan establishes the District as a regional water planning agency. The Plan provides rationale for subwatershed-based planning and prioritization by which to focus implementation efforts for the 2018-2027 Plan cycle. The District has prioritized the subwatersheds of Minnehaha Creek, Six Mile Creek-Halsted Bay and Painter Creek-Jennings Bay based on a combination of resource needs and opportunities for management of some of the State's most prized recreational natural resources of Lake Minnetonka and Minnehaha Creek – including the Minneapolis Chain of Lakes.

In addition to these focused planning and implementation efforts, the District's approach watershed-wide is to remain responsive to opportunities created by local land use change or partner initiatives. The District's responsive approach relies on early and effective coordination by the District's communities to help identify opportunities to integrate plans and investments. As opportunities arise, the District will evaluate them against the resource needs and priorities defined for each subwatershed in the District's Plan and determine the appropriate response. The District has a wide range of services it can mobilize to address resource needs and support partner efforts, including data collection and diagnostics, technical and planning assistance, permitting assistance, education and capacity building, grants, and capital projects.

Integration of land use and water planning is the primary focus of the LWMP requirements set forth in the District's Plan. To effectively integrate the goals of MCWD and its LGUs in a way that maximizes community benefits and effectively leverages public funds, the District has invited a partnership framework with its communities. In addition to the legally required elements of LWMPs, as defined in State statute and rules, the MCWD Plan requires communities to propose a coordination plan which describes how the LGU and MCWD will share information and work together to integrate land use and water planning. Specifically, the purpose of a MCWD/LGU coordination plan is to:

1. Establish a framework to be informed as to current LGU land use and infrastructure planning and enable early coordination of land use and water resources management
2. Foster LGU development regulation that integrates water resource protection before plans are fixed
3. Identify and capitalize on project opportunities for improved water resources outcomes while maximizing other public and private goals

As established in the District's Plan, MCWD will prioritize implementation efforts and resource deployment based on its established priorities and LGU commitment to coordination. This commitment is demonstrated through the coordination plan and its implementation by the LGU.

Victoria LWMP Summary:

The City of Victoria (City) has submitted its LWMP for MCWD review and approval. District staff reviewed the LWMP and provided detailed comments regarding the goals and requirements of the District's Plan for consideration and incorporation into the LWMP. The City has revised the LWMP to address the District's comments.

The City occupies approximately 10.4 square miles in the MCWD with an additional 10.4 square miles to be annexed (see attached map). A small portion of the City is within the Carver County Watershed Management Organization to the south. Victoria includes portions of the following subwatersheds: Six Mile Creek Halsted Bay, Lake Virginia, Lake Minnetonka, and Schutz Lake. The following water bodies within the City's ultimate boundaries are impaired for nutrients: Church Lake, East Auburn Lake, Lake Virginia, Parley Lake, Stone Lake, Wassermann Lake, Tamarack Lake, and Turbid Lake.

In 2014, the MCWD Board adopted the Six Mile Creek Halsted Bay Subwatershed as a priority geography. Beginning in 2016, as part of its Plan development process, MCWD convened a multi-jurisdictional partnership, of which Victoria is a participant, to work together to guide and prioritize planning and implementation efforts in this region. The interagency team worked through a collaborative process in which it reached a shared understanding of natural resource issues, drivers, and management strategies; worked to understand partner agencies' plans and priorities; identified opportunities where local plans dovetail with identified natural resource needs; and created a shared implementation framework.

MCWD and the City of Victoria have established a successful history of partnership guided by a 2015 Memorandum of Understanding (MOU) which provides a cooperative framework for early coordination of land use planning. The MOU addresses specific water management issues within the City, and furthers a shared commitment to integrate planning and investments to protect and improve natural systems while creating a vibrant, healthy community.

As part of the City's 2040 Comprehensive Plan development process, MCWD and the City collaborated on a study for the future of the western growth area of Victoria. This planning process resulted in the Victoria Chain of Lakes Greenway Policy and Implementation Plan which establishes a set of guidelines and strategies for development that recognizes and responds to a systems plan of connected open space, parks, greenways, trails, wetlands and waterbodies.

The City worked with District staff to develop the attached Coordination Plan to further document a shared commitment by MCWD and the City to integrate land use and water planning through early coordination and continued collaboration as previously established in the 2015 MOU, Six Mile Creek Halsted Bay Subwatershed Partnership, and the Victoria Chain of Lakes Greenway Policy and Implementation Plan. The Coordination Plan covers the following areas: annual meeting, land use planning, regulatory coordination, public communications and education, and aligning plans and investments.

The implementation section of the LWMP incorporates projects from the District's 10-year Capital Improvement Plan for the Six Mile Creek Halsted Bay, Lake Virginia, and Schutz Lake subwatersheds. The City's LWMP states that the City will continue to work in close partnership with MCWD to identify and program priorities in these areas.

The City has not proposed to acquire implementation authority for any MCWD water resource regulation. The City will continue to defer Local Government Unit authority for the Wetland Conservation Act to MCWD.

Recommendation:

Staff has verified that the LWMP meets all requirements of Minnesota Statutes §103B.235, Minnesota Rules 8410.0160, and the MCWD Watershed Management Plan and recommends approval.

Attachments:

1. Victoria Map
2. Victoria Coordination Plan
3. Victoria LWMP (via website)

RESOLUTION

RESOLUTION NUMBER: 19-079

TITLE: **Approval of Victoria Local Water Management Plan**

WHEREAS, on January 11, 2018, the MCWD adopted its Watershed Management Plan (WMP) pursuant to Minnesota Statutes §103B.231 and Minnesota Rules 8410, which describes how the MCWD will fulfill its responsibilities under the Metropolitan Surface Water Management Act for implementation over the period 2018-2027, and which is guided by the organizational strategy and approach defined through the Balanced Urban Ecology policy; and

WHEREAS, the Balanced Urban Ecology policy prioritizes partnership with the land use community to integrate policy, planning, and implementation in order to leverage the value created when built and natural systems are in harmony; and

WHEREAS, the Balanced Urban Ecology policy rests on the guiding principles of focusing in areas of highest resource needs, being flexible to respond to opportunities that arise through land use changes, and working in partnership to achieve the MCWD's goals; and

WHEREAS, on watershed district adoption of its WMP, cities and towns (local government units or LGUs) within the watershed must prepare local water management plans (LWMPs) that meet content requirements of Minnesota Statutes §103B.235, Minnesota Rules 8410.0160 and the WMP; and

WHEREAS, the LWMP is a primary tool to provide a framework for increased early coordination of land use and water planning through the coordination plan that is a required component of the LWMP and the content of which is described in the WMP, Appendix A; and

WHEREAS, the MCWD will prioritize implementation efforts and resource deployment based on its established priorities and LGU commitment to coordination as demonstrated through the coordination plan and its implementation by the LGU; and

WHEREAS, the City of Victoria (City) has revised its LWMP and submitted it to the MCWD for review and approval; and

WHEREAS, MCWD staff reviewed the draft LWMP, provided detailed written comments on the LWMP, and thereafter worked with City staff to achieve the development of a proposed LWMP for consideration by the MCWD Board of Managers; and

WHEREAS, the Metropolitan Council has reviewed the LWMP and provided its written comments to the MCWD in a letter on November 30, 2018, and the MCWD has fully considered the comments; and

WHEREAS, the LWMP states that the City does not choose to exercise sole regulatory authority but, instead, wishes that the MCWD continue to require permits for the use and development of land, and otherwise exercise its regulatory authority, within the meaning of Minnesota Statutes §103B.211, subd. 1(a)(3); and

WHEREAS, the LWMP states that the City elects for the District to continue to act as the Local Government Unit responsible to implement the Minnesota Wetland Conservation Act; and

WHEREAS, the LWMP contains a coordination plan that meets the standards set forth in the MCWD WMP, Appendix A; and

WHEREAS, the MCWD has determined that the final revised LWMP meets the requirements of Minnesota Statutes § 103B.235, Minnesota Rules 8410.0160, and is consistent with the MCWD WMP including Appendix A, "Local Water Plan Requirements";

NOW, THEREFORE, BE IT RESOLVED, that the MCWD hereby approves the City of Victoria Local Water Management Plan; and

BE IT FURTHER RESOLVED, that the Board approves the associated coordination plan and adopts it on behalf of the MCWD; and

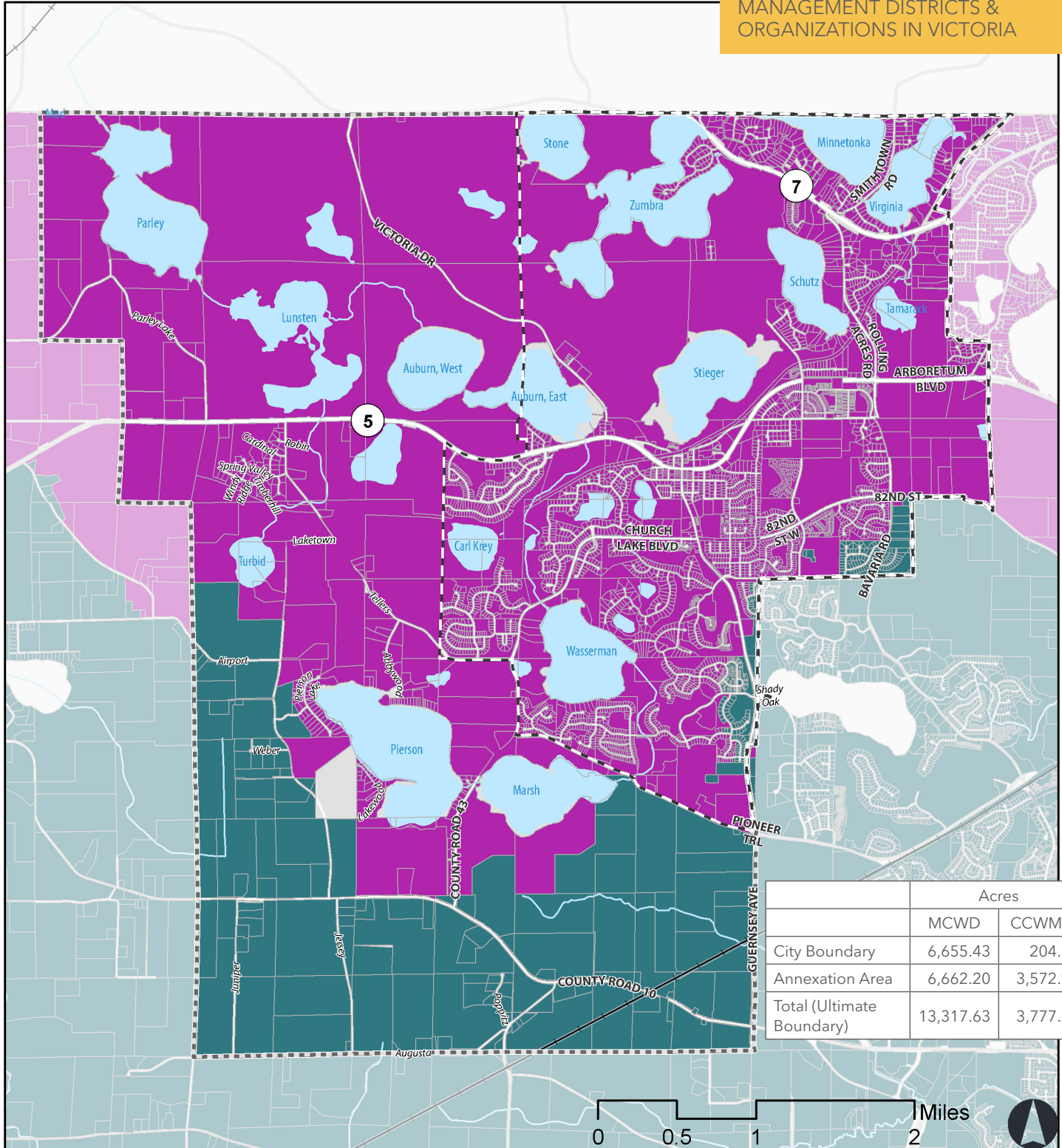
BE IT FINALLY RESOLVED that the City is to adopt and implement its LWMP within 120 days, and to notify the MCWD within 30 days thereafter that it has done so.

Resolution Number 19-079 was moved by Manager _____, seconded by Manager _____.
Motion to adopt the resolution ___ ayes, ___ nays, ___ abstentions. Date: _____.

Secretary Date: _____.

**DRAFT for discussion purposes only and subject to Board approval and the availability of funds.
Resolutions are not final until approved by the Board and signed by the Board Secretary.**

FIGURE 9.1 WATERSHED MANAGEMENT DISTRICTS & ORGANIZATIONS IN VICTORIA



	Acres	
	MCWD	CCWMO
City Boundary	6,655.43	204.34
Annexation Area	6,662.20	3,572.90
Total (Ultimate Boundary)	13,317.63	3,777.24

- City Boundary
- Ultimate City Boundary
- Lake
- River
- Watershed Organization**
- Carver County Watershed Management Organization
- Minnehaha Creek Watershed District

COORDINATION & PARTNERSHIP WITH WATERSHED ENTITIES

Given the complexity of rules, regulations and agencies governing water in the state of Minnesota, it is important that agencies partner and work together to meet requirements. Specifically, support is needed from MCWD and CCWMO to assist the City in areas such as meeting requirements of the Wetland Conservation Act, the MS4 permit including public education and outreach, construction and post construction stormwater management and addressing TMDLs for impaired waters, along with any other mutually identified goals. Improved outcomes can undoubtedly be achieved through coordination and partnership.

The City will meet with both CCWMO and MCWD annually to review activities completed in the previous year and to review activities programmed for the upcoming year to help better identify areas and opportunity for collaboration.

The following outlines the ongoing coordination efforts between the City and MCWD and CCWMO:

- » Regular meetings - Staff members will meet regularly (as least biannually with MCWD and annually with CCWMO) to review activities from the previous year and draft capital improvements for each entity programmed for the upcoming year. City staff will provide updates on ongoing MS4 related activities, annexation and development activities. It is anticipated that the Community Development Director, Director of Parks and Public Works and City Engineer will attend the meeting(s) on behalf of the City.
- » Land Use Planning - Planning staff will inform MCWD and CCWMO of any land use changes from the approved comprehensive plan and any planned annexations. Approvals of land use applications will be coordinated such that applicants will be directed to meet with MCWD or CCWMO staff during the sketch plan process and no final approval for construction will be granted until such time as final approval has been granted by MCWD or CCWMO.
- » Regulatory activities - Planning staff will require documentation of appropriate MCWD or CCWMO construction and land alteration permits as a condition of City approval. Approved permits will be stored with other project documentation for future reference. Within MCWD areas, MCWD staff will provide reporting of annual permitting and inspections for the City's use in completing annual MS4 reports. Copies of the City's MS4 Annual Report will be provided to MCWD and CCWMO.
- » Wetland Conservation Act enforcement - MCWD is the LGU for Wetland Conservation Act (WCA) applications and will continue to inform City planning and engineering staff of applications and progress towards approvals for each applicant. CCWMO will be the LGU for growth areas within CCWMO.

- » Funding - The City seeks support from MCWD and CCWMO in terms of grant funding for water quality projects. The City requests that MCWD and CCWMO staff continue to provide information about upcoming grants and other funding opportunities.
- » Data Sharing - City staff members will coordinate with MCWD and CCWMO staff to share any new or relevant data on an annual basis to ensure consistency. This data could be related to any newly completed studies, water quality monitoring, BMP performance monitoring, etc.
- » Public Improvement Projects - City staff members will provide yearly updates on plans for public improvement projects. This will be coordinated as part of the annual meeting while discussing the draft Capital Improvement Plan. When requested, maintenance activities for stormwater infrastructure will be provided as part of the MS4 recording process and City inspection reports.

MINNEHAHA CREEK WATERSHED DISTRICT AND CITY OF VICTORIA COORDINATION PLAN

BACKGROUND

Minnehaha Creek Watershed District (MCWD/District) has defined its role as a regional water planning agency through its Water Management Plan (Plan). The Plan focuses on partnership with the land use community and incorporates a subwatershed focus to address areas of significant resources needs with a level of complexity that requires sustained effort and coordination across multiple partners.

In 2014 the MCWD Board of Mangers officially adopted the Six Mile Creek Halsted Bay (SMCHB) subwatershed as a District priority. Beginning in 2016, as part of the MCWD's Watershed Management Plan development process, MCWD convened a multi-jurisdictional partnership, of which Victoria is a participant, to work together to guide and prioritize planning and implementation efforts in this region. The interagency team worked through a collaborative process in which we reached a shared understanding of natural resource issues, drivers, and management strategies; worked to understand partner agencies plans and priorities; identified opportunities where local plans dovetail with identified natural resource needs; and created a shared implementation framework.

Minnehaha Creek and the City of Victoria have established a successful history of partnership guided by a 2015 Memorandum of Understanding (MOU) which provides a cooperative framework for early coordination of land use planning. The MOU addresses specific water management issues within the City, and furthers our shared commitment to integrate planning and investments to protect and improve natural systems while creating a vibrant, healthy community.

As part of the City 2040 Comprehensive Plan process, MCWD and the City collaborated on a study for the future of the western growth area of Victoria. This planning process resulted in the Victoria Chain of Lakes Greenway Policy and Implementation Plan which establishes a set of guidelines and strategies for development that recognizes and responds to a systems plan of connected open space, parks, greenways, trails, wetlands and waterbodies.

PURPOSE

The Minnehaha Creek Watershed District's (MCWD) approach to water resource planning recognizes the environmental, social and economic value created when built and natural systems work in harmony. Through its Plan, the MCWD emphasizes early coordination of land use and water resources planning with Cities to integrate water resources goals with other public and private goals to add this broader value to communities. To maintain awareness of needs and opportunities to implement programs and projects that reflect the cooperation of partners, align investments, and secure a combined set of District and partner goals, the MCWD requests that cities establish a coordination plan as part of the Local Water Management Plan that the City and MCWD can implement at a staff level.

This Coordination Plan reflects and builds upon the terms of the 2015 Memorandum of Understanding, integrating land use planning at the City and watershed planning at the MCWD at the conceptual level planning phase. The outcomes of this type coordination are projects that meet multiple goals and result in an efficient use of public funds. Early coordination between entities is the key to maximizing shared water resource goals, community goals for private development, and the implementation of the Victoria Chain of Lakes Greenway.

COORDINATION

The following coordination plan will be adjusted and expanded as deemed appropriate by the City and MCWD during project implementation. It is anticipated that the City Planner will be the primary contact for the coordination plan.

The Coordination Plan further establishes and documents a shared commitment by MCWD and the City to integrate land use and water planning through early coordination and continued collaboration as previously established in the 2015 Memorandum of Understanding, Six Mile Creek Halstead Bay Subwatershed Partnership and the Victoria Chain of Lakes Greenway Policy and Implementation Plan. The following outlines current and future coordination efforts between MCWD and the City:

1. Annual meeting - City and MCWD staff will meet at least annually to review activities from the previous year and draft capital improvements for each entity programed for the upcoming year. City staff will provide updates on ongoing MS4 related activities, annexation and development activities. It is anticipated that the Community Development Director, Public Works/Park and Recreation

Director, and City Engineer will participate the annual meeting.

2. Land Use Planning - The City will continue to join with its partners in the SMCHB subwatershed in order to implement water resource priorities identified in the MCWD Watershed Management Plan; the strategies for growth and development identified in the City of Victoria Greenway Corridor Policy; and align local plans and capital investment to identify opportunities where local investments intersect with natural resource goals. The City and MCWD will endeavor to leverage external funding to implement the shared vision for the SMCHB subwatershed.

Implementation opportunities that the City and District will endeavor to implement through on-going coordination and partnership include:

- *City of Victoria Chain of Lakes Greenway Vision*
- *Wasserman West Lakefront Park and Natural Resource Improvements*
- *East Auburn Wetland Restoration*

3. Regulatory coordination - The City of Victoria Planning staff will endeavor to continue to route request for land use approvals including but not limited to, subdivisions, site plan approvals, WCA applications, infrastructure improvements and park improvements to the District at concept plan phase in effort to maximize water resources benefits and streamline regulatory processes. Specific areas of regulatory coordination include the following:

- *Pre-application meetings and permit reviews coordinated with MCWD early in the planning process*
- *City assistance to support MCWD in construction site inspections and compliance*
- *MCWD will keep the City apprised of water resource violations and expectations for compliance*
- *The City will require documentation of required MCWD permits in advance of issuing applicable City permits. Approved MCWD permits will be stored with other project documentation for future reference.*
- *City road, infrastructure, facilities and land improvements that require MCWD permits will be coordinated as part of the annual meeting and otherwise early in the CIP process so that the regulatory process may be efficient and integrated water and natural resource improvements may be explored.*
- *The primary person responsible for regulatory coordination at the City of Victoria is the Community Development Director and the Permitting Program Manager at MCWD*

4. MCWD coordination and partnership on public communications and education - MCWD serves as a valuable resource to the City in educating the public and meeting requirements of the City's MS4 permit pertaining to both education and public participation and engagement. Efforts include access available educational materials and MCWD participation in City events including a periodic hosting of a meeting with property owners adjacent to lakes, wetlands and stormwater management facilities.
5. Aligning Planning and Investments - The City understands that the process to align investments begins at the concept stage of project development and recognizes that the MCWD may offer technical resources and planning assistance to assist the City in aligning public and private investments providing value to its residents and the environment. In addition to leveraging District technical, the City will support the District as it pursues external funding resources to support capital project implementation within the City and the Six Mile Creek Halstead Bay subwatershed.
6. Communication - The primary contact person responsible for implementation of the coordination plan is the City Community Development Director at the City of Victoria and the Policy Planning Manager at the MCWD.



09. LOCAL SURFACE WATER MANAGEMENT PLAN

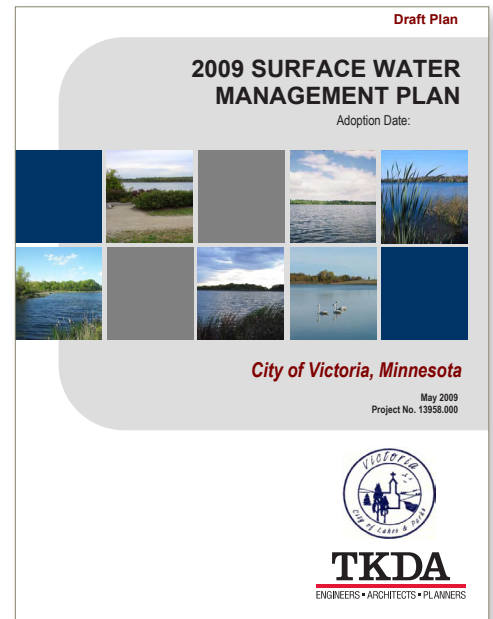
This chapter of the City's 2040 Comprehensive Plan serves as the City's Local Surface Water Management Plan in accordance with Minnehaha Creek Watershed District and Carver County Water Management Organization policies. This chapter is an update of the City's 2009 Surface Water Management Plan.

EXECUTIVE SUMMARY

This Local Surface Water Management Plan will help to guide the protection and management of surface waters and related natural resources in the City of Victoria. The plan has been developed as part of the City's 2040 Comprehensive Plan to meet the requirements of the Metropolitan Council and State Statutes. The City is located within the jurisdiction of the Carver County Water Management Organization (CCWMO) and Minnehaha Creek Watershed District (MCWD). The existing CCWMO and MCWD plans were used to develop several sections of this plan. The following highlights the sections of this chapter:

PHYSICAL ENVIRONMENT AND LAND USE

The plan includes an inventory of surface waters and natural resources within the City. Victoria has extensive wetland and lake areas as well as limited floodplains. Smithtown Bay on Lake Minnetonka, the Carver Park Reserve, and several other areas of natural communities exist within Victoria. The City has experienced significant development over the recent past, and it is predicting additional development through 2040. The City has an Orderly Annexation Agreement in place to annex adjacent areas of Laketown Township and the anticipated ultimate city limits have been included in this plan. As the City urbanizes stormwater improvements are managed to meet federal, state, and local requirements.



This Local Surface Water Management Plan is an update of the 2009 Surface Water Management Plan.

EXISTING AND POTENTIAL WATER RESOURCE RELATED PROBLEMS

The plan includes a discussion of existing water quantity and quality concerns within the City as identified by the City and MCWD. In general, issues include controlling the rate, volume, and quality (erosion and sediment control) of stormwater runoff during and after new construction.

ROLES AND RESPONSIBILITIES

There are many organizations that have an interest and role in managing surface waters in Victoria. These organizations and their respective roles are summarized in this section of the chapter.

GOALS AND POLICIES

This section of the chapter highlights goals and policies that show how the City will continue to play a significant role in surface water management within Victoria, in partnership with MCWD and CCWMO. All three agencies will review site plans for development projects or other zoning and subdivision applications to ensure the plans are consistent with the surface water management goals for the City. The City will implement its adopted Municipal Separate Storm Sewer System (MS4) Permit and SWPPP to manage stormwater infrastructure and educate its residents about the importance of protecting surface waters. The goals and policies section also includes implementation actions that note the City will enforce its zoning and subdivision ordinances to assist in maintaining or improving the quality of surface and groundwaters within Victoria. The City will update its code as needed to ensure that it meets the requirements of the Metropolitan Council and its plan is consistent with those of MCWD and CCWMO. The City will partner with other regional entities to work together to protect surface waters and enhance natural resources.

COORDINATION AND PARTNERSHIP WITH WATERSHED ENTITIES

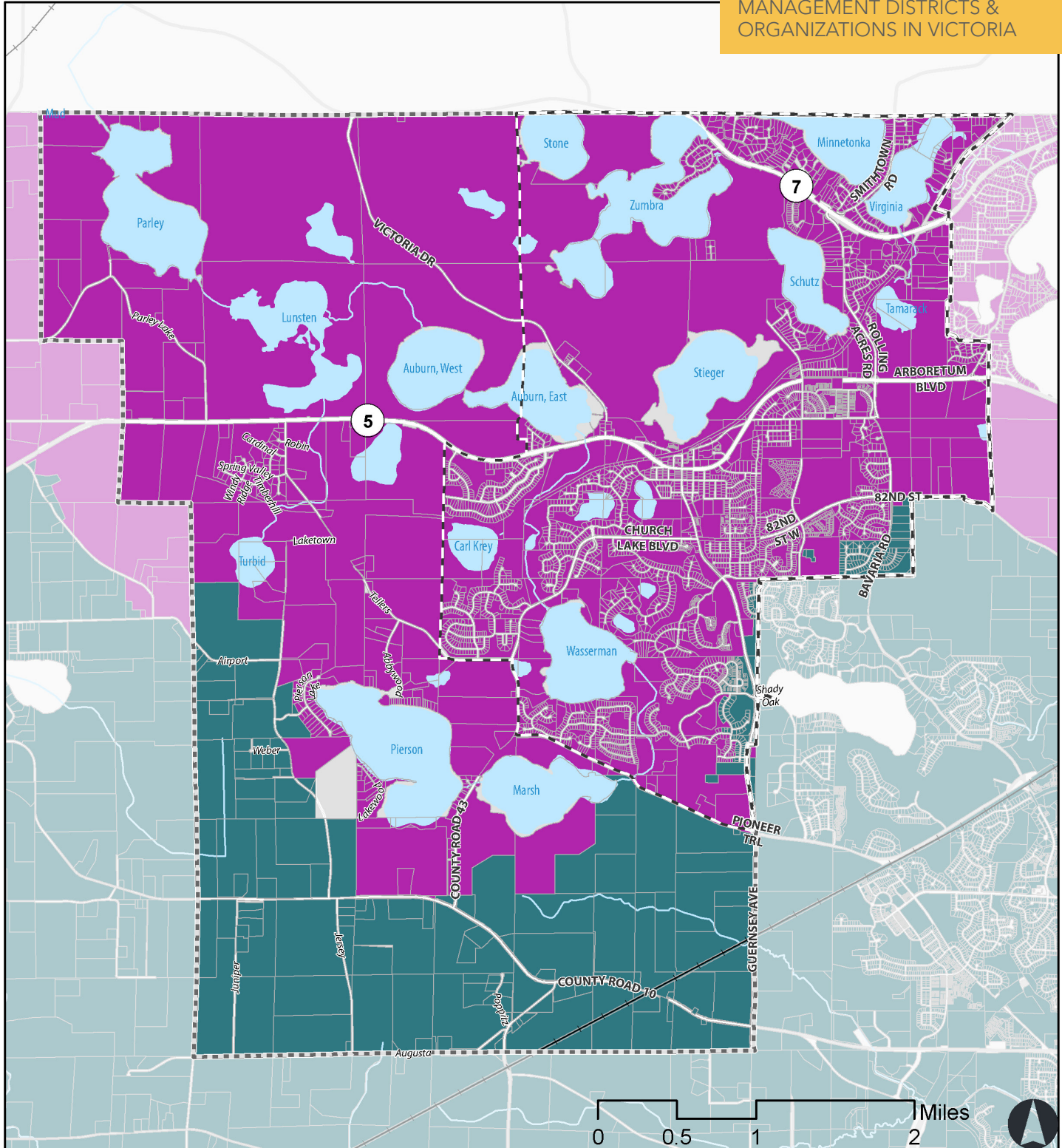
This section highlights how the city will collaborate with organizations like the MCWD and CCWMO to meet stormwater management goals and requirements.

WATER RESOURCE MANAGEMENT RELATED AGREEMENTS

The City has entered into several agreements with MCWD regarding areas of collaboration between the two entities. The following summarizes those agreements:

- » Agreement regarding maintenance of stormwater facilities.
- » Memorandum of Understanding dated March, 2015, which provides a framework for Coordinated Planning, Assessing Specific Water Management Issues and Regulatory Coordination and Support.
- » 2016 Cooperative Agreement (and supporting documents) related to regional stormwater management for downtown Victoria.
- » 2017 Six Mile-Halsted Bay Subwatershed Partnership and Resolution of Support to develop a coordinated policy and investment framework for the Six Mile-Halsted Bay Subwatershed.
- » 2017 Purchase Agreement for Lake Wassermann Park.

FIGURE 9.1 WATERSHED MANAGEMENT DISTRICTS & ORGANIZATIONS IN VICTORIA





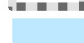
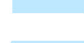


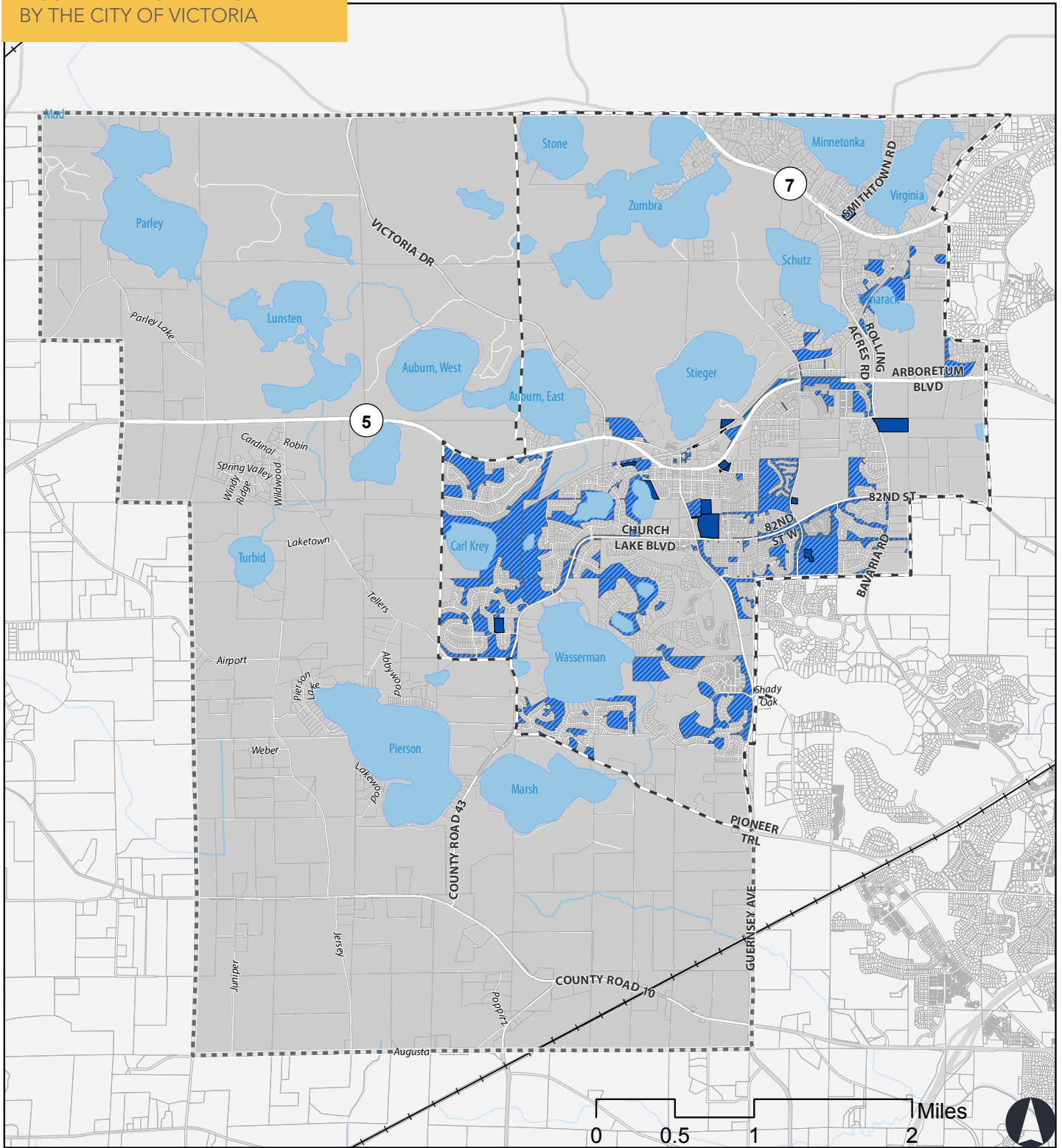
-  City Boundary
-  Ultimate City Boundary
-  Lake
-  River
- Watershed Organization**
-  Carver County Watershed Management Organization
-  Minnehaha Creek Watershed District

FIGURE 9.2 PROPERTY OWNED BY THE CITY OF VICTORIA



- City Facilities
- City Owned Land

The CCWMO and MCWD manage stormwater permitting within the City, and the City provides comments on development proposals and other permit applications via City ordinances. The CCWMO and MCWD also serve as the Local Government Unit (LGU) for enforcing the Wetland Conservation Act within the City. As growth continues into areas within CCWMO, the City will explore establishing an agreement regarding water resource related education. The City currently operates under its National Pollutant Discharge Elimination System (NPDES) MS4 permit.

LOCAL SURFACE WATER MANAGEMENT PLAN AMENDMENTS AND UPDATES

City Comprehensive Plans are updated every ten years. LSWMPs must be updated within two years of completion of both the MCWD's and CCWMO's Watershed Management Plans. The City will update its LSWMP along with its Comprehensive Plan, or as needed to comply with state rules related to LSWMP updates to be consistent with Watershed Management Plans.

The MCWD adopted its current plan in January of 2018, and will update its plan in 2027. The CCWMO adopted its current plan in 2010, and is currently in the process of updating its plan.

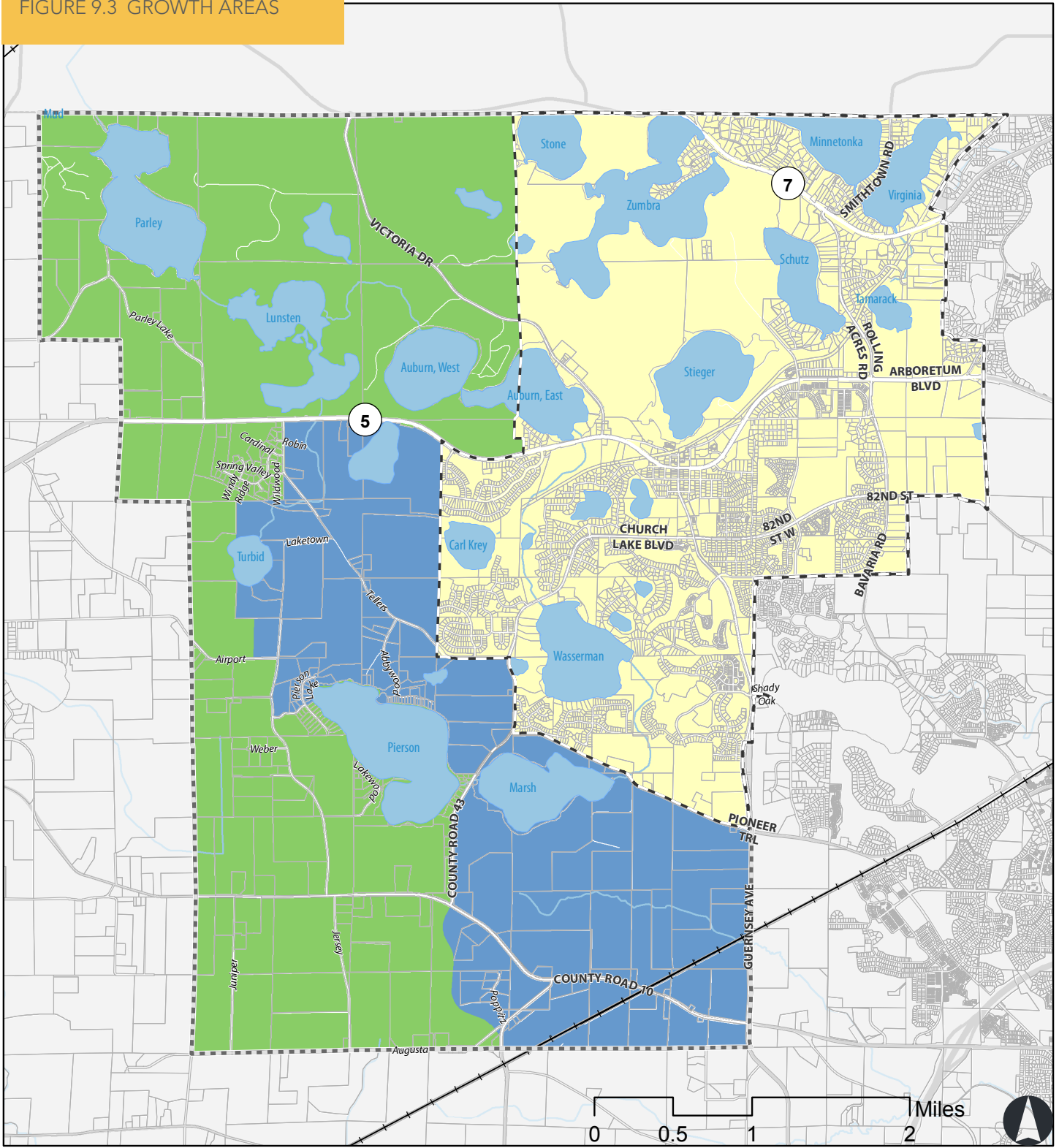
Substantive revisions to the goals and objectives, the adoption of new or revised standards or rules, and major revisions to the CIP or administrative procedures of the Watershed District or Water Management Organization Plans will require an amendment to this LSWMP and approval by the City Council.

Once approved, no significant changes to this plan can be made without approval of the proposed revisions by the affected watershed entities. Any proposed changes shall be coordinated with the City Manager, Community Development Director, Parks and Public Works Director, City Engineer, MCWD and/or CCWMO, and the Metropolitan Council. The public shall also be involved through a public hearing process.

Following notification of the above parties, they shall have 60 days to comment on the proposed revisions, with the exception of The Metropolitan Council who shall have 45 days to comment on the revisions. Failure to respond within the specified time periods constitutes approval. Upon receipt of approvals from the affected Watershed Management Organizations and Watershed Districts within the City, any proposed amendments will be considered approved.

Minor changes to the Plan shall be defined as changes that do not modify the goals, policies, or commitments explicitly defined in this plan by the City. Adjustment to subwatershed boundaries will be considered minor changes provided that the change will have no significant impact on the rate or quality in which storm water runoff is discharged from the City boundaries. Minor changes to this plan can be made by City staff without outside review. It is the intention of the City that this Plan be updated ten years after the adoption of this Plan unless significant changes to the plan are deemed necessary prior to that date.

FIGURE 9.3 GROWTH AREAS



- Existing City Limits
- Growth Area
- Remaining Orderly Annexation Area

PHYSICAL ENVIRONMENT & LAND USE

EXISTING PHYSICAL ENVIRONMENT & LAND USE

Victoria is a rural, developing community. Most of its land use within the current city boundary is single family residential with turf grass and scattered trees. Several lakes, ponds, and wetlands exist within the city boundary. A large portion of the city is regional park land, which is covered with a variety of land cover, including forest, tall grasses, wetland shrubs, open water, wetland open water, and wetland emergent vegetation. Much of the existing growth areas include agricultural land as well as wetlands and grasslands as shown by the MLCCS Land Cover data in Figure 9.6.

PROPOSED PHYSICAL ENVIRONMENT & LAND USE

The proposed land use and physical environment in Victoria's growth areas includes a majority of single family residential developments. The goal is for new developments to include ample open spaces areas where wetlands, floodplains, steep slopes, and potentially high quality natural resources are preserved as open space and recreational corridors. Nodes of higher intensity development with a mix of commercial and residential uses are anticipated at major road intersections within future growth areas of the city. Phasing of growth by land use and small area plans for redevelopment are explored further in Chapter 4, "Growth Potential" on page 38.

The City of Victoria has been actively working with MCWD staff, and will work with CCWMO, to thoughtfully plan for future growth that will provide the most benefit for future stormwater management and water quality, as well as providing desirable places to live and recreate. The greenway policy found in the land use chapter is a prime example of how stormwater management and land use can be integrated.

FLOODPLAINS

In 2018, FEMA adopted new floodplain maps designating new floodplain areas within the City and ultimate boundary. In anticipation of the updated mapping, the City adopted a floodplain ordinance consistent with the DNR model ordinance.

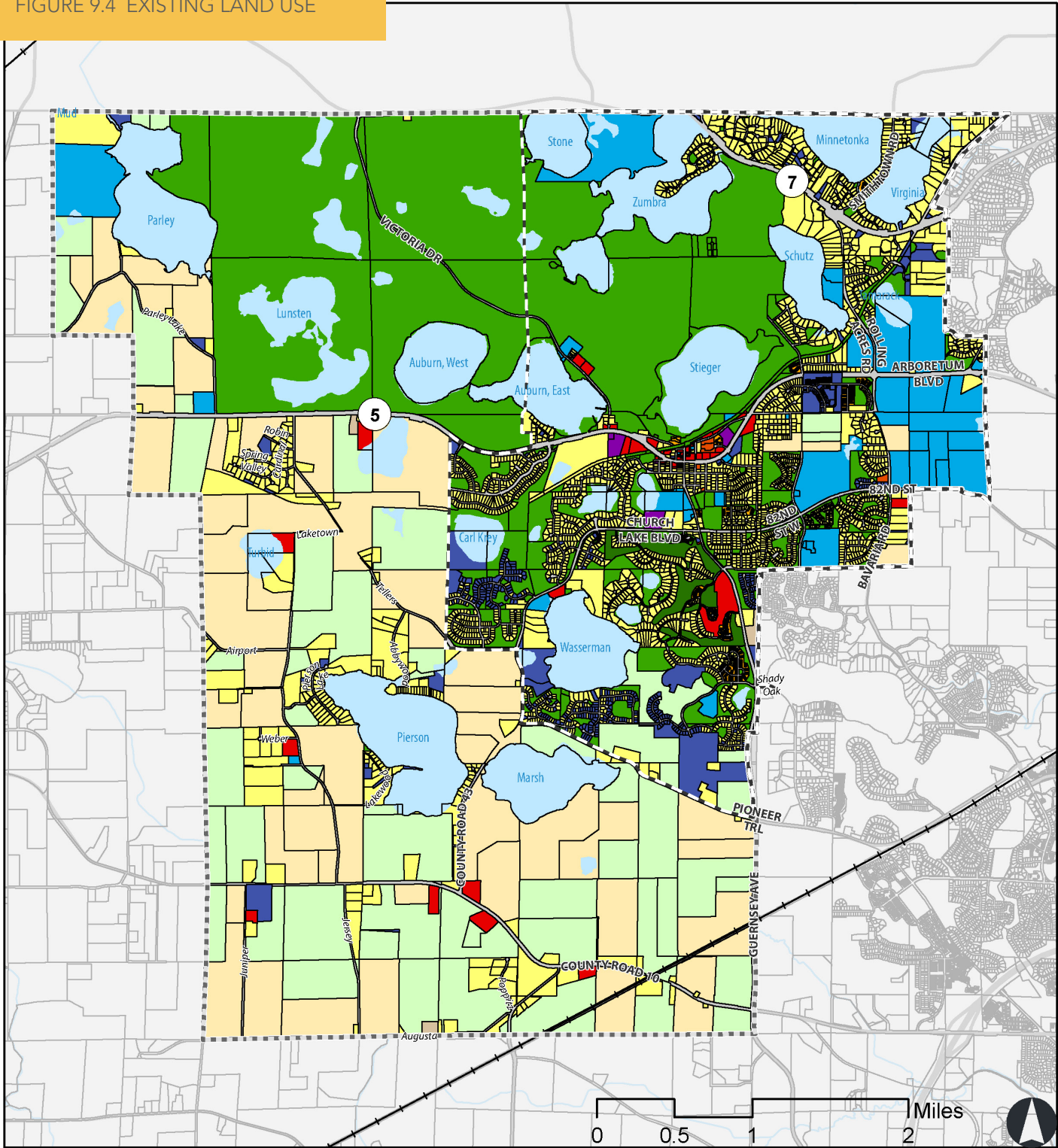
DRAINAGE AREAS & DRAINAGE SYSTEMS

STORM DRAINAGE SYSTEM AND CITY OWNED PROPERTY

Historically, the City's drainage system consisted of rural roads with a combination of ditches, culverts, and minimal storm sewer that would convey stormwater runoff directly to wetlands and lakes. Most of these historic drainage systems have been replaced with curb and gutter, storm sewer inlets, and pipes as part of road reconstruction projects.

As environmental regulations and water resource protection evolved, the City began incorporating pollutant removal and runoff reduction measures as part of its drainage system in areas of new development. These systems are built specifically to intercept pollutants and include wet ponds and grit chambers.

FIGURE 9.4 EXISTING LAND USE



- City Boundary
- Orderly Annexation Boundary
- Railroad

Existing Land Use 2017

- AG-1 Farm Fields
- AG-2 Farm Fields with Homestead
- Rural Estate
- Single Family Detached

- Condominium
- Multi-Family
- Commercial
- Industrial
- Institutional
- Parks, Recreational, or Preserve

- Golf Course
- Vacant
- Right-of-Way
- Utilities
- Water

FIGURE 9.5 FUTURE (2040) LAND USE

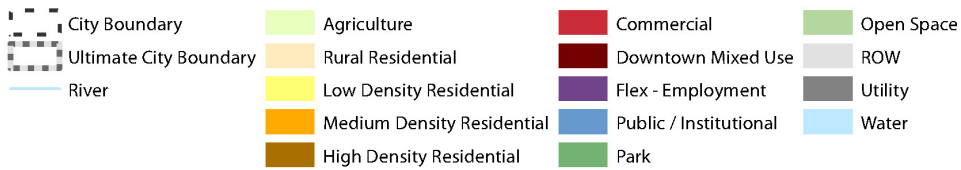
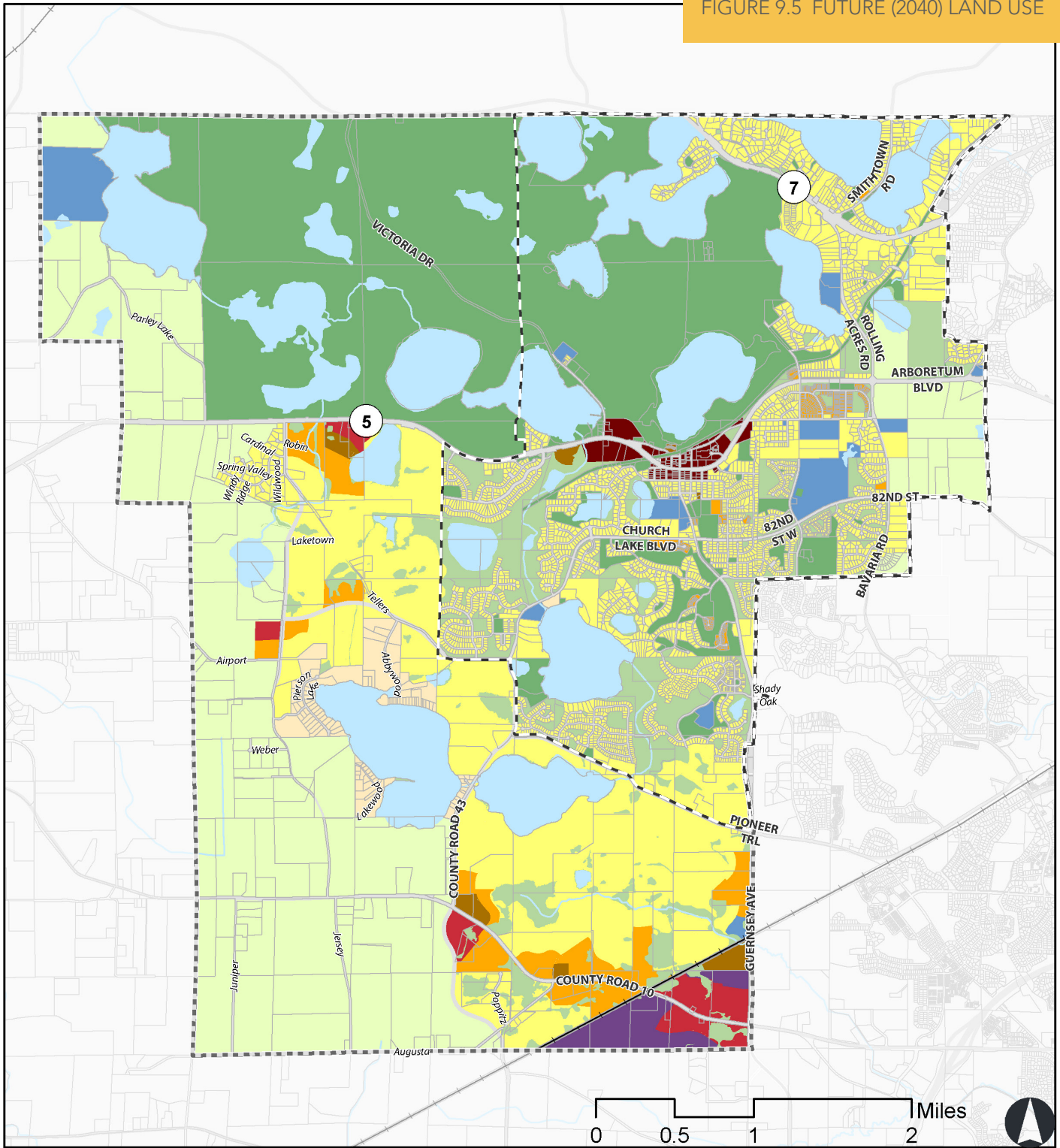
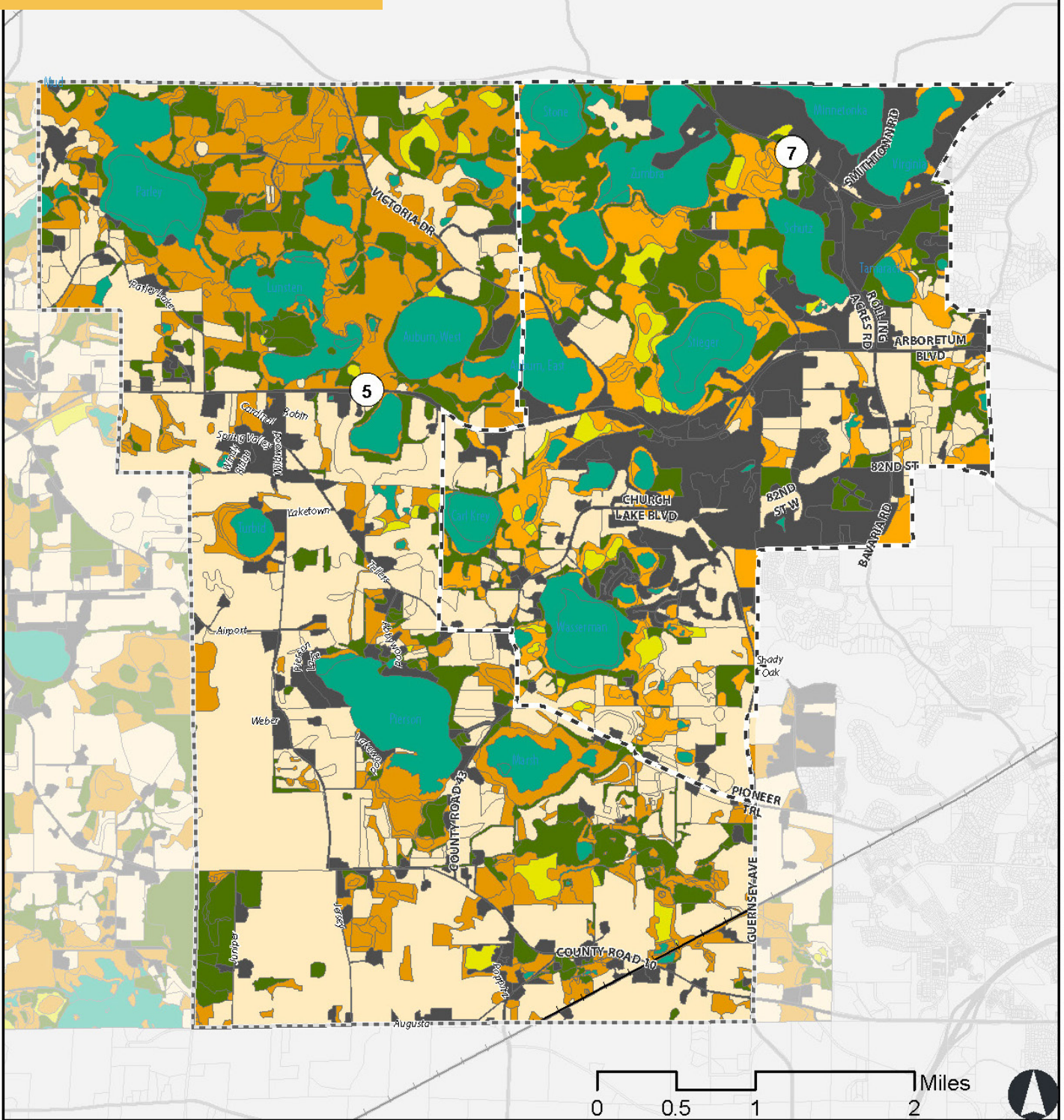


FIGURE 9.6 MLCCS LAND COVER



A map of the City's stormwater infrastructure is shown in Figure 9.78. The City owns and operates most of this infrastructure including stormwater management facilities which are installed in outlots that are deeded to the City as part of the development process. The exception to this requirement applies to a small number of facilities located on church/school property and are privately maintained. The City also requires wetlands and wetland buffers to be included in outlots that are deeded to the City.

Aside from public right of way and open space preserved by the City for wetland and natural resource protection, the City owns and maintains a variety of facilities including approximately 20 parks and multiple municipal buildings and public parking lots. All City owned property is shown in Figure 9.2. As part of the City's MS4 permit, inspections of the stockpiles, and storage and material handling areas within these facility areas are completed quarterly, and maintenance is completed as necessary based on the findings of the inspections. Generally, the number of stockpiles and storage and handling areas vary depending on the time of year (ie salt storage toward the beginning of winter, sweepings storage during the spring and fall, etc.) and are not used year-round. Maintenance and general practices related to these areas may include routine inspections, perimeter control, sweeping, removal and disposal of piles throughout the year, and temporary inlet protection.

PUBLIC DITCHES

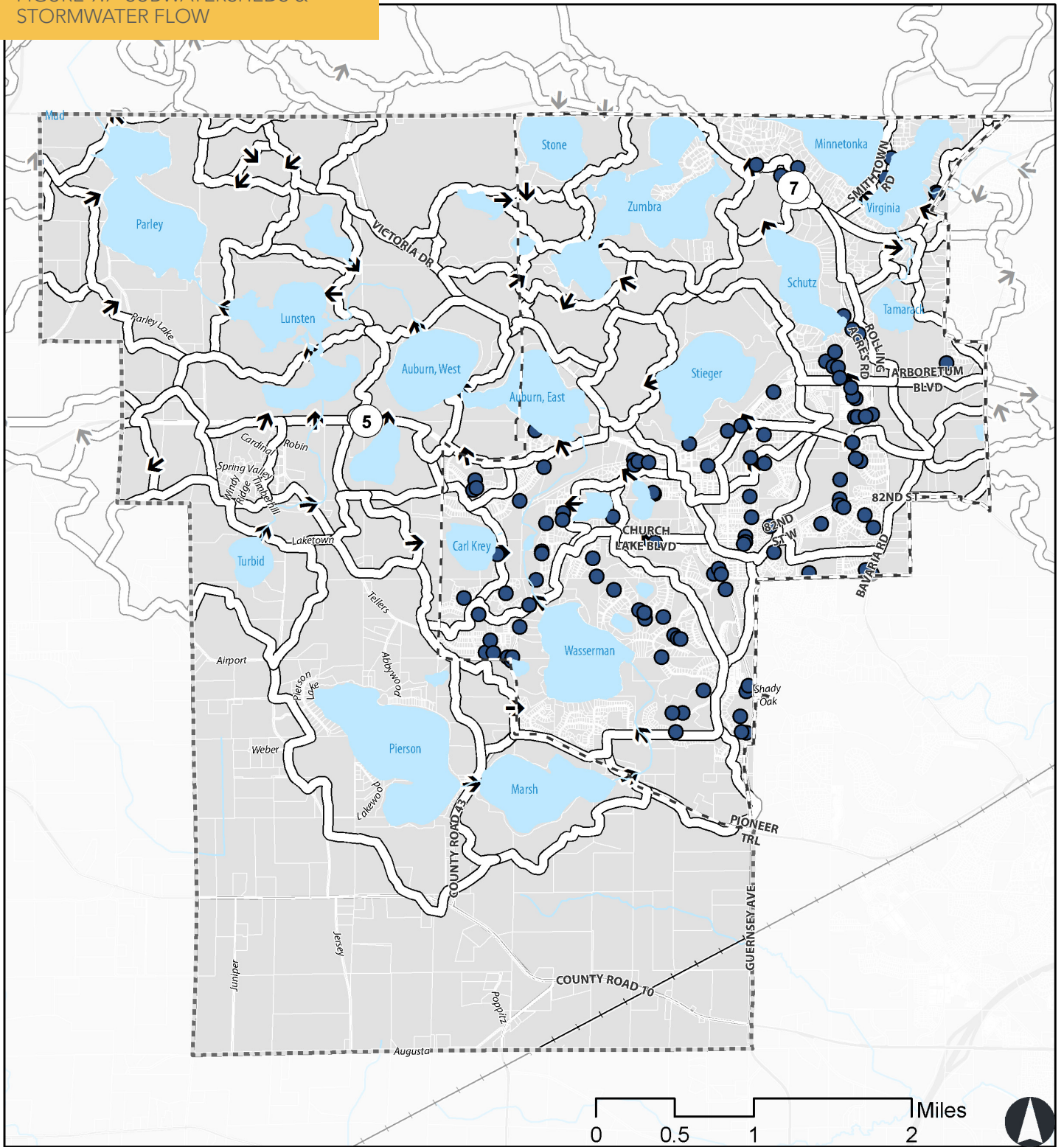
Counties have authority for managing drainage systems (under Minnesota Statute §106A) within a County, or a Joint County Drainage Authority for drainage systems that are within two or more counties. Counties have the option to delegate authority over drainage systems to watershed districts, where they exist. Counties, when acting as the drainage authority, may establish, improve or repair drainage systems and similar activities related to drainage. However, these authorities are regulated by a variety of Federal and State agencies. In the City, Carver County has delegated the jurisdiction over public ditches to the MCWD within their boundary. Thus, the MCWD is the ditch authority for the purposes of implementing Minnesota Statute §103E (Drainage Law). There are no jurisdictional ditches within the City. However, the City's ultimate boundary contains Six-Mile Creek, which has been channelized as Judicial Ditch No. 2 and is under the jurisdiction of MCWD.

Watershed Modeling Information

Watershed model data within the Minnehaha Creek Watershed area is maintained by MCWD.

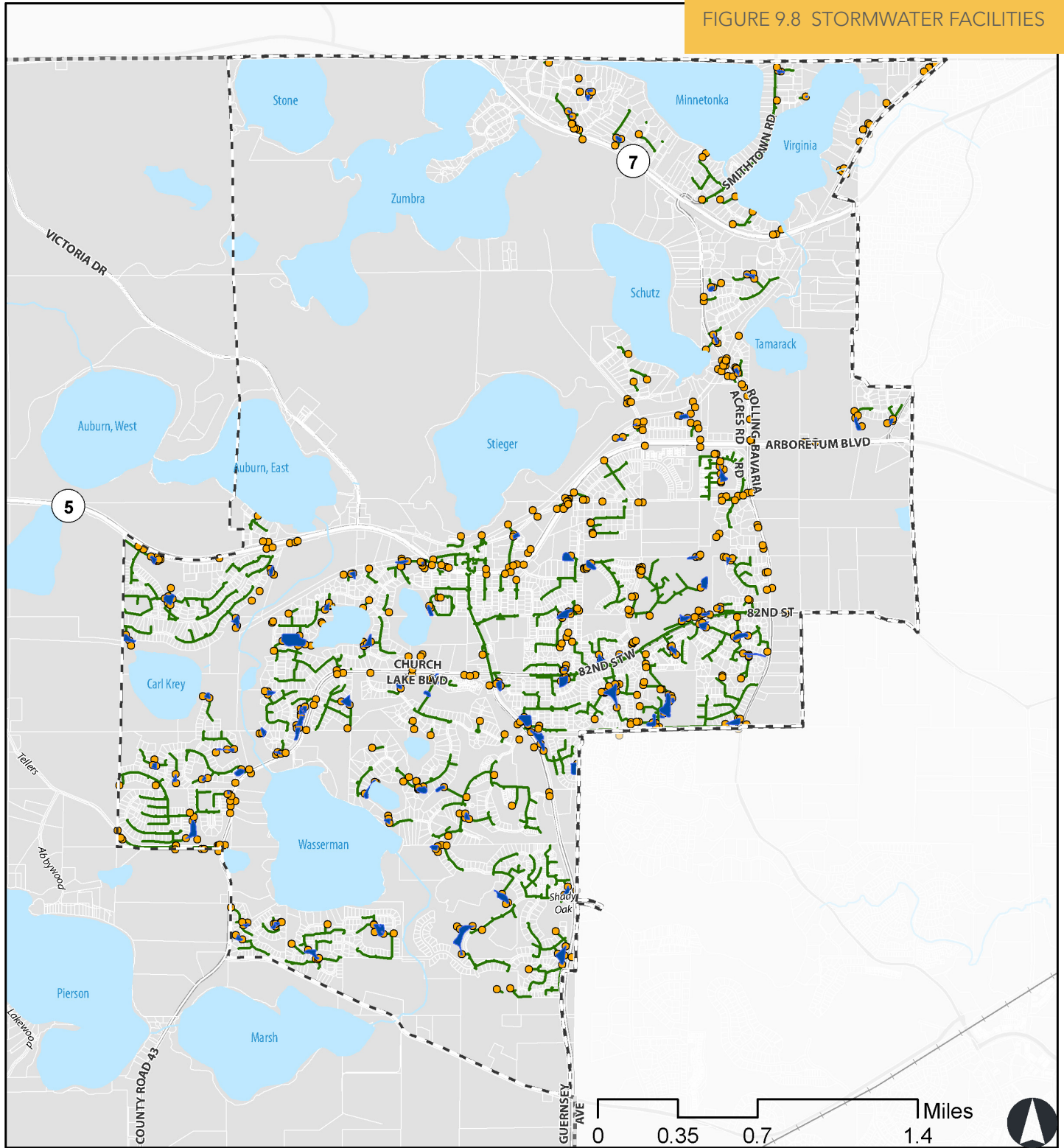
As growth is extended into the Carver Creek Watershed, it will be necessary to develop more detailed watershed model information for those land areas consistent with the approved land use plan and maintained as development occurs. By June 1, 2019, the City will delineate drainage areas, determine flows, volumes, rates, and routing for each drainage area within CCWMO consistent with Minnesota Rules. See Figure 9.7 for existing known subwatersheds.








FIGURE 9.7 SUBWATERSHEDS & STORMWATER FLOW



- City Boundary
- Ultimate City Boundary
- Lake
- River
- Discharge Type**
- MS4
- Flow Direction
- Minor Subwatershed

FIGURE 9.8 STORMWATER FACILITIES



-  City Boundary
-  Ultimate City Boundary
-  Lake
-  River
-  Stormwater Facilities
-  Storm Discharge Points
-  Storm Sewer

EXISTING AND POTENTIAL WATER RESOURCE-RELATED PROBLEMS

EXISTING & POTENTIAL WATER RESOURCE RELATED PROBLEMS

An assessment of water related problems and issues was completed as part of the 2009 Surface Water Management Plan. The issues identified remain similar today as do the strategies for addressing them. The issues are typical to suburban fringe developing communities with existing rural/agriculture related uses that are transitioning with development pressures. In general, issues summarized in the 2009 plan include controlling the rate, volume, and quality (erosion and sediment control) of stormwater runoff during and after new construction.

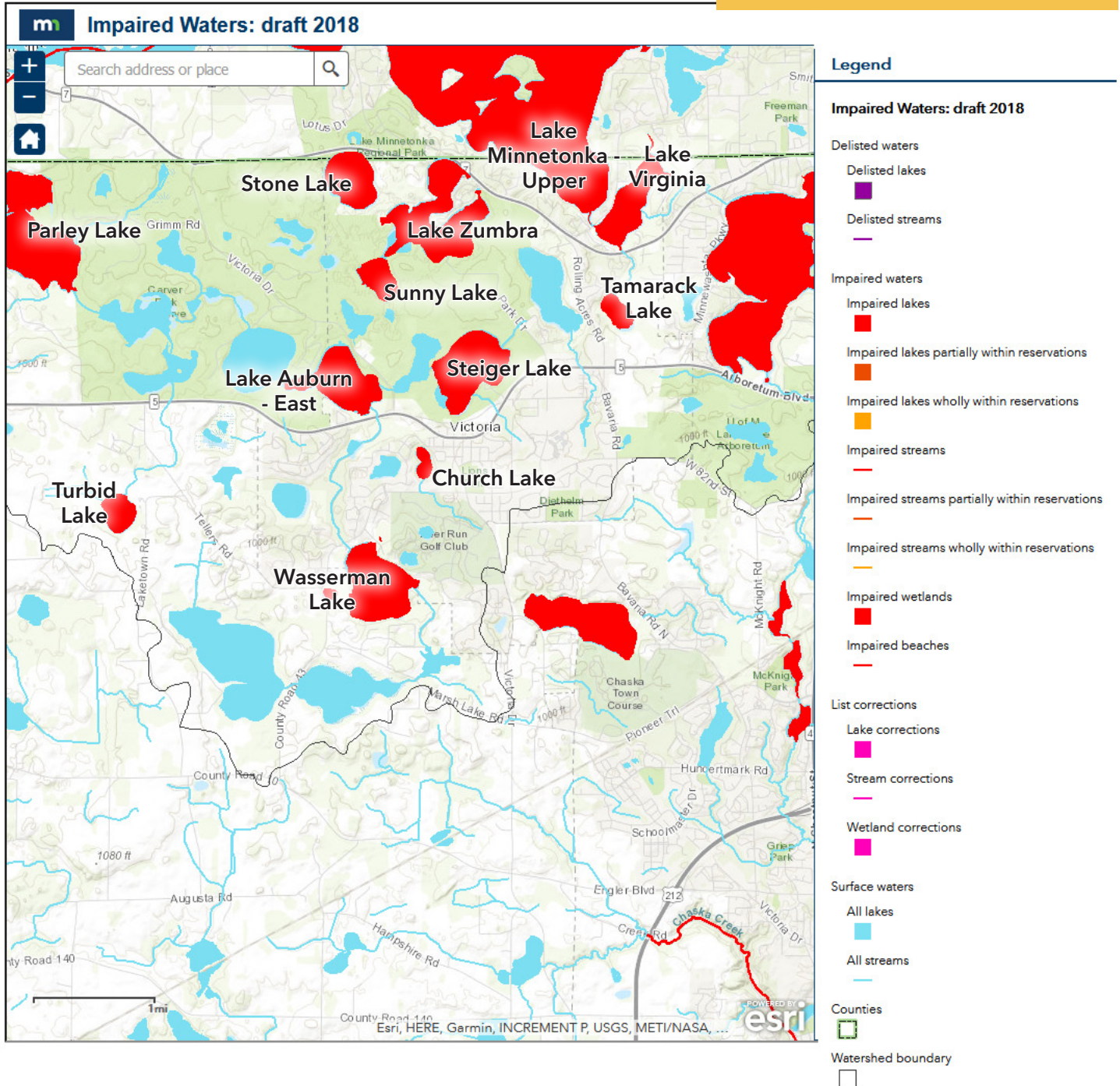
Maintenance of existing stormwater management facilities is anticipated to be a potential water resource related problem. Over time, existing ponds will need to be dredged to remove sediment which may contain level 3 contaminants resulting in high disposal costs. This challenge, which all owners/operators of stormwater facilities are facing, will need a cooperative multi-jurisdictional approach to finding a solution.

Since 2009 areas identified for potential flooding have been monitored during heaving flow conditions, like the properties around Lake Zumbra. In response, MCWD, the City of Victoria, Three Rivers Park District and residents from the Lake Zumbra Association have been working together to understand causes of flooding, evaluate strategies to reduce flooding, and review implementation steps to address flooding. The City anticipates that the partners will continue to work together to implement strategies where appropriate.

The Deer Run Golf Course has also experienced flooding during historic rain events. Between 2015 and 2017, the City, supported by MCWD, worked with the golf course to evaluate flood risks and possible solutions. In response, maintenance work was completed including the replacement of a failing outlet control structure for one of the ponds. Preliminary design was completed for more comprehensive improvements to the system to reduce flooding. After consideration, it was determined that the high cost of the improvements and the high impact to golf course operations outweighed the flood risk.

Outside of the items noted above and minor localized flooding issues, there have been no other significant flood risks identified in the City. In 2013, the City along with MCWD and the City of Minneapolis participated in a study funded by NOAA to look at the impact and needs to adapt due to extreme weather trends. A portion of Victoria was evaluated and the City's infrastructure was found to be able to accommodate increases in precipitation. The amount of green space preserved through the development process along with placement of wetlands, wetland buffers and stormwater management features in City-owned outlots contributes to the ability of the system to withstand increased rain events. The Final Project Report, "Weather: Extreme Trends", was issued on January 31, 2014.

FIGURE 9.9 IMPAIRED WATERS MAP



Source: MPCA, <https://www.pca.state.mn.us/water/impaired-waters-viewer-iwav>

The study, along with additional background information, is available on the project page of the MCWD website at:

<https://www.minnehahacreek.org/project/weather-extreme-trends>

MCWD's fourth generation Watershed Management Plan was adopted on January 18, 2018. The City Council approved Resolution No. 2017-57, A Resolution of Support for the Minnehaha Creek Watershed District Watershed Management Plan, on August 28, 2017. The Plan includes several subwatershed plans which encompass land within the City of Victoria and much of the area to be annexed into the City. A copy of the MCWD plan can be found on the MCWD website at:

<https://www.minnehahacreek.org/about/watershed-management-plan>

Applicable subwatershed plans include:

- » Lake Minnetonka Subwatershed Plan
- » Lake Virginia Subwatershed Plan
- » Schutz Lake Subwatershed Plan
- » Six-Mile Halsted Bay Subwatershed Plan

Each plan details resource needs, management strategies, local plans and priorities, implementation priorities and the district's capital improvement plan. Elected officials, City of Victoria residents and property owners, and City staff participated in the development of each of these subwatershed management plans.

The Lake Virginia subwatershed management plan notes that Lake Virginia is an impaired water with an approved TMDL with a target reduction needed of 77 lbs. The Schutz Lake Subwatershed Management plan notes that while Schutz Lake is not currently impaired for excess nutrients, total phosphorus concentrations are near state water quality standards. Both subwatershed management plans indicate that a reduction in stormwater volumes and nutrient loading is needed to improve conditions in both lakes.

The Six-Mile Halsted Bay Subwatershed Plan provides a detailed assessment of the needs and drivers for this very complex area which includes a large area of the current City limits and growth area.

As noted in the Plan, the Six Mile Creek-Halsted Bay subwatershed spans 27 miles and covers many jurisdictions including the City of Victoria. Given its scale, abundance of natural resources, complexity of issues including many impaired waters, along with partnerships between MCWD and the cities and agencies within the area, the MCWD Board of Managers identified this area as priority for planning and implementation. This prioritization creates a significant opportunity for the City of Victoria. Issues were first identified in this area of the City with the identification of Lake Wassermann as an impaired water not meeting state water quality standards. This designation was followed by the development and approval of a TMDL for the Lake in 2011. Through the process of developing a plan to address the TMDL and subsequent analysis, it was clear that the interconnected area needed to be reviewed with a systems approach to address issues in order to obtain measurable

TABLE 9.1 IMPAIRED WATERS WITH APPROVED TMDLS

WATERBODY	POLLUTANT	TARGET	REDUCTION NEEDED
East Auburn Lake	Total Phosphorus	40 µg/L	626 lbs
Lake Virginia	Total Phosphorus	40 µg/L	77 lbs
Parley Lake	Total Phosphorus	60 µg/L	998 lbs
Stone Lake	Total Phosphorus	40 µg/L	29 lbs
Tamarack Lake	Total Phosphorus	40 µg/L	0 lbs
Turbid Lake	Total Phosphorus	40 µg/L	138 lbs
Wassermann Lake	Total Phosphorus	40 µg/L	470 lbs

Source: Minnehaha Creek Watershed District 2018 Watershed Management Plan

progress in improving water quality in Lake Wassermann as well as the rest of the Six Mile Creek area. Identified challenges include elements such as excess nutrients including internal sediment phosphorus loading, altered wetlands and channels, , roadway crossing impacts, increased stormwater runoff, and an overabundance of carp against a backdrop of development pressures that are resulting in increased impervious surfaces.

Working in partnership with MCWD creates the opportunity to see these issues addressed and water quality improved, while generating secondary benefits addressing the City's priorities in these areas. Some of the secondary benefits include protection of natural resources and trees, greenway corridor preservation, and trail connections as outlined in other sections of the City's Comprehensive Plan.

IMPAIRED WATERS

According to the Minnesota Pollution Control Agency's 303d impaired waters list, the following water bodies within the existing and ultimate city boundaries are impaired:

- » Church Lake
- » Lake Auburn - East
- » Lake Minnetonka - Upper
- » Lake Virginia
- » Parley Lake
- » Steiger Lake
- » Stone Lake
- » Sunny Lake
- » Wassermann Lake
- » Tamarack Lake
- » Turbid Lake
- » Lake Zumbra

ROLES AND RESPONSIBILITIES

CITY OF VICTORIA OFFICIAL CONTROLS

The City's Community Development Department, Engineering Department, and Public Works Department are responsible for water resources management within the City.

The Public Works Department maintains the City's public infrastructure and parks. The department provides monitoring and maintenance of storm sewers, stormwater ponds, water quality devices, and lake control structures. The Engineering Department is responsible for planning, administration, design, and inspection of infrastructure improvements. The department coordinates with the CCWMO, MCWD, and other outside agencies in water resource management. Figure 9.1 identifies watershed authorities within the City.

The Community Development Department manages comprehensive planning, zoning controls, and ordinances. The City code contains the following regulations related to surface water management and protection:

- » Chapter 8, Article II, Surface Water Drainage
- » Chapter 26, Article IV, Storm Drainage Utility
- » Chapter 30, Article VII, Shoreland District Requirements
- » Chapter 30, Article XVIII, Tree Preservation and Replacement
- » Chapter 30, Article XX, Stormwater Management

The zoning and land use regulations are currently being revised in conjunction with the updated Comprehensive Plan. The revised regulations will incorporate the goals and policies identified in this LSWMP.

The above referenced departments in conjunction with the City's finance department and administration department support the City Council in the planning, programming and implementation of the City's infrastructure including street and transportation systems, sanitary sewer and water systems, storm sewer and stormwater management systems, and park and recreation facilities. A series of processes drives the decisions in these areas including the development of the comprehensive plan every 10 years, followed by strategic planning by the City Council, input and requests by property owners and residents, and staff identification of maintenance needs. Each year, the finance department maintains a long-term finance plan (10+ years), capital improvement plan (5 years) and annual budgeting (2 years) based on the projects, programs and needs identified through the above referenced sources.

Over the course of a year, the finance director works with staff, the finance committee and the City Council to develop the budget for the following year using the following timeline:

- » June - Staff identifies needs
- » July - Finance committee reviews 1st draft for general budget
- » August - Budget workshop with Council
- » September - Council adopts preliminary budget
- » November - Budget workshop with Council
- » December - Council adopts final budget

Opportunities to address water resources issues, projects and/or opportunities are contemplated throughout the other systems in any areas of overlap. Park improvements can intersect with water quality improvements. Transportation projects create opportunities to address legacy issues. Given Victoria's small staff, all departments work closely together in supporting the City Council and implementing policies and priorities of the City Council. Additional detail can be found on the Budget and Planning page of the City's website.

THREE RIVERS PARK DISTRICT

Three Rivers Park District manages the land and natural resources within the Carver Park Reserve. The Park Reserve includes several large lakes and wetlands, as well as natural community areas of high quality. The MDNR's County Biological Survey notes the locations of natural communities and rare species within the Park Reserve.

CARVER COUNTY

The County is the primary planning entity for ground water planning. State Statute §103B.255 - Ground water plans, Subdivision 1, requires that watershed and local water management plans comply with the provisions of the ground water plan. The County also has specific programs and policies relating to drainage issues on its highway systems and County ditch systems. The County also has established shoreland zoning ordinances for the control of development activity along the shorelines of lakes and the banks of major rivers. These zoning ordinances also regulate established 100-year flood plains.

CARVER SOIL AND WATER CONSERVATION DISTRICT (SWCD)

SWCDs are established under Chapter 103C of the Minnesota Statutes. The purpose of these Districts is to promote programs and policies which can conserve the soil and water resources within their territorial limits. Historically, SWCDs focused on identification, implementation, and financial support of practices that effectively reduce or prevent erosion, sedimentation, siltation, and agriculturally-related pollution. As formerly rural counties in the Metropolitan Area have become more urban, SWCDs have expanded their roles to address the impacts of urban development on water and natural resources.

SWCDs frequently act as local sponsors or provide cost-share resources for water management projects that include a variety of BMPs. The

Districts also are actively involved in educational programs which promote water, natural resource, and soil conservation practices. The SWCDs receive a great deal of technical assistance from the United States Natural Resource Conservation Service (NRCS).

The activities of the Carver County SWCD are governed and directed by an elected board of five supervisors. The activities fall under the general categories of Agriculture and Rural Programs, County-Wide Programs, and Education Programs.

WATERSHED MANAGEMENT ORGANIZATIONS

The State of Minnesota adopted the Minnesota Watershed District Act in 1955. This Act, now codified in Minnesota Statutes 103D (formerly Chapter 112), provides for establishment of watershed districts to regulate land use planning, flood control, and other conservation issues.

In 1982, the State approved the Metropolitan Surface Water Act, Minnesota Statutes 103B. This act requires all metropolitan area local governments to address surface water management through participation in a Water Management Organization (WMO). A WMO can be organized as a Watershed District, a joint powers agreement (JPA) among municipalities, or as a function of county government. The City is divided into multiple drainage basins that flow to two separately managed watersheds.

MINNEHAHA CREEK WATERSHED DISTRICT (MCWD)

The MCWD was formed in 1967 under the authority of Minnesota Statutes §103D. MCWD covers approximately 181 square miles and is composed of 29 communities: Chanhassen, Deephaven, Edina, Excelsior, Golden Valley, Greenwood, Hopkins, Independence, Laketown Township, Long Lake, Maple Plain, Medina, Minneapolis, Minnetonka, Minnetonka Beach, Minnetrista, Mound, Orono, Plymouth, Richfield, Shorewood, Spring Park, St. Bonifacius, St. Louis Park, Tonka Bay, Victoria, Watertown Township, Wayzata, and Woodland.

MCWD has been authorized by the Minnesota State Legislature to act as the LGU responsible for administering the Wetland Conservation Act (WCA). The MCWD uses methods and procedures outlined in the WCA to determine replacement of wetland values in mitigation proposals. The MCWD also administers an extensive permitting program for development.

CARVER COUNTY WATER MANAGEMENT ORGANIZATION (CCWMO)

The CCWMO was formed in 1996 under the authority of Minnesota Statutes §103D. CCWMO is responsible for water resources management for all areas in County that are not within the boundaries of another WMO.

CCWMO has been authorized by the Minnesota State Legislature to act as the LGU responsible for administering the WCA. The CCWMO uses methods and procedures outlined in the WCA to determine replacement of wetland values in mitigation proposals. The CCWMO also administers an extensive permitting program for development.

METROPOLITAN COUNCIL (METCO)

The Metropolitan Council, created in 1963, is the regional governmental body responsible for planning within the seven-county Minneapolis-St. Paul metropolitan area. The Metropolitan Area includes Anoka, Carver, Dakota, Hennepin, Ramsey, Scott, and Washington Counties. The METCO plans for major regional systems, including the following:

- » Transportation and Mass Transit
- » Wastewater and Public Water Supply Systems
- » Housing, Re-development, and Urban Growth
- » Regional Parks and Open Space
- » Water Resource Management

The METCO has review authority for City and County Comprehensive Plans within the Seven-County Area, to assure that they are consistent with the regional system plans. The METCO provides extensive data analysis and information to local communities, and completes forecasts of regional and local population growth that are used in the development of local plans.

The METCO's activities specific to water resources management include:

- » Region-wide Surface and Ground water Planning and Non-point Source Pollution Abatement
- » Industrial Wastewater Management
- » Sewage Collection and Treatment

The METCO provides guidance for developing local water resource plans in its "Water Resource Management Policy Plan" adopted December 19, 1996. The Plan identifies broad region-wide objectives for water management, and its Appendices detail the requirements for LSWMPs.

STATE BOARD OF WATER AND SOIL RESOURCES (BWSR)

The BWSR was created by the 1986 legislature. Three functioning state boards were eliminated by this legislation and their duties were transferred to BWSR on October 1, 1987. BWSR's duties include oversight programs and funding of State SWCDs, formation and guidance of watershed districts, and the direction and assistance to counties in developing their Comprehensive Water Plans. The BWSR is responsible for implementation of the WCA. The BWSR reviews and approves water management plans and project activity of watershed districts and soil and water conservation districts.

MINNESOTA POLLUTION CONTROL AGENCY (MPCA)

The MPCA has created by State Legislature in 1967. The MPCA has both regulatory and enforcement authority relative to potential actions which could affect the quality of the ground waters and surface waters of the State. Since future City projects will likely involve water quality considerations, the MPCA may become an active participant in these projects. The MPCA is also involved with other governmental units, such as municipalities, in the construction and operation of wastewater treatment plants and the control of non-point source pollution.

The MPCA is required to publish a list of impaired waters in the state not meeting federal water quality standards. For each waterbody on the list, the MPCA is required to conduct a study to determine the allowable Total Maximum Daily Load (TMDL) for each pollutant that exceeds the standard. Local governments will be required to incorporate completed TMDL Studies into their surface water management plans.

Another important function of the MPCA is implementing the National Pollutant Discharge Elimination System (NPDES) program. This program regulates not only traditional wastewater discharges but also construction activities and stormwater.

The MPCA NPDES Phase II general permit establishes conditions for discharging stormwater, and specific other related discharges, to waters of the State. This permit is required for discharges that are from Small Municipal Separate Storm Sewer Systems (MS4). The Rule identifies a number of implementation options for regulated MS4 operators. The permit requires the following minimum program elements:

- » Public Education and Outreach
- » Public Participation and Involvement
- » Illicit Discharge Detection and Elimination
- » Construction Site Runoff Control
- » Post-Construction Runoff Control
- » Pollution Prevention and Good Housekeeping

The MPCA has also published the Minnesota Stormwater Manual. The manual serves as a unified stormwater guidance document for the entire state.

MINNESOTA DEPARTMENT OF NATURAL RESOURCES (MDNR)

The MDNR was originally created in 1931 as the Department of Conservation. The MDNR has both regulatory and enforcement authority over the natural resources of the State. The principal divisions of MDNR include the Division of Waters, the Division of Forestry, and the Division of Fish and Wildlife (which includes the sections of Wildlife, Fisheries, and Ecological Services). The MDNR has permit authority for any change in cross-section or work below the Ordinary High Water (OHW) level of regulated water bodies. This often includes protected waters and wetlands. The MDNR is also actively involved in helping local units of government administer floodplain and shoreland management ordinances and standards.

MINNESOTA DEPARTMENT OF HEALTH (MDH)

The MDH manages programs to protect the public health, including implementation of the Safe Drinking Water Act (SDWA). It has permit authority and regulatory authority for monitoring water supply facilities. These facilities include water wells, surface water intakes, water treatment, and water distribution for public use. The MDH also is responsible for the development and implementation of the Wellhead Protection Program (WHPP).

MINNESOTA ENVIRONMENTAL QUALITY BOARD (EQB)

The EQB is comprised of five citizen members and the heads of ten State agencies that play an important role in Minnesota’s environment and development. The EQB develops policy, creates long-range plans, and reviews proposed projects that may significantly influence Minnesota’s environment.

The EQB is also responsible for implementing the State’s environmental review rules.

MINNESOTA DEPARTMENT OF TRANSPORTATION (MNDOT)

Within the City, MnDOT administers several state highway systems. Since highway systems cross drainage patterns of natural and artificial waterways, there is opportunity for frequent interaction between the City and MnDOT. City projects requiring structures through MnDOT regulated highways require coordination and approval by MnDOT. Anticipated activities of MnDOT are periodically published in their State Transportation Improvement Plan (STIP).

U.S. ENVIRONMENTAL PROTECTION AGENCY (USEPA)

Responsibilities of the EPA within Minnesota have largely been delegated to the MPCA. The agreement between EPA and MPCA relative to these programs is largely identified by the document “Environmental Performance Partnership Agreement.” This includes the NPDES Phase II program, which includes the City.

U.S. ARMY CORPS OF ENGINEERS (USACE)

The USACE can have permit and regulatory authority over projects in the City under Section 404 of the Clean Water Act (CWA) for jurisdictional wetlands.

FEDERAL EMERGENCY MANAGEMENT AGENCY (FEMA)

FEMA manages federal disaster mitigation and relief programs, including the National Flood Insurance Program. This program includes floodplain management and flood hazard mapping.

NATURAL RESOURCE CONSERVATION SERVICE (NRCS)

The Natural Resources Conservation Service (formally called the Soil Conservation Service (SCS)), is a division of the U.S. Department of Agriculture. The NRCS provides technical advice and engineering design services to local conservation districts across the nation. The Soil Survey of Carver County was published by the NRCS in 1968. The NRCS also developed hydrologic calculation methods that are widely used in water resources design.

U.S. GEOLOGICAL SURVEY (USGS)

The USGS provides mapping and scientific study of the nation’s landscape and natural resources. USGS maps provide the basis for many local resource management plan efforts.

U.S. FISH AND WILDLIFE SERVICE (USFWS)

The mission of the USFWS is to conserve, protect, and enhance the nation's fish, wildlife, plants and habitat. The USFWS developed the National Wetlands Inventory (NWI) in 1974 to support federal, state, and local wetland management work.

GOALS AND POLICIES

As required under Minnesota Rule 8410, this Plan establishes goals and policies that will guide the City in the effective management of its water resources, while addressing identified problems and issues. The goals presented in this Section of the Plan are sufficiently detailed to provide direction regarding what the policies should accomplish and to allow for the assessment of their success. The goals and policies recognize the fundamental relationship between water quality and land use. These requirements along with Minnesota Watermarks, MCWD and CCWMO policies and NPDES Phase II permitting requirements form the Plan's foundation and will guide the City, particularly as to land use and development controls, for purposes of protecting against flooding or preserving water quality.

GENERAL WATER RESOURCES POLICY STATEMENT

The City of Victoria has a strong desire to protect and manage its valuable water and natural resources, recognizing the relationships between resource protection, land use management, development, facility maintenance, and fiscal responsibility. The City recognizes the need to work with others, including the Minnehaha Creek Watershed District and Carver County Water Management Organization, to achieve its goals for the protection of surface waters, ground water and related natural resources within Victoria. The overall goal for water resources management is for the City to remain committed to a goal of nondegradation of the lakes, wetlands, and streams within the City, and to work with local watershed management organizations and State agencies to achieve this goal.

GOAL SWM-1. Control the rate of stormwater runoff from development to reduce downstream flooding and erosion.

Policy SWM-1.1. The City will enforce the stormwater management practices required in the Zoning Ordinance to ensure that the peak rate of runoff from regulated land development does not exceed the specified rates.

Policy SWM-1.2. The Zoning Ordinance will be reviewed and updated as necessary to ensure that peak control standards are consistent with current engineering practices and current regulations of local and state agencies having jurisdiction within the City.

Policy SWM-1.3. All drainage system analyses and designs shall be based on proposed full development land use patterns.

Policy SWM-1.4. The City will continue to assess the potential risk of flooding at locations identified by the MCWD HHPLS and any other locations determined by the City and CCWMO.

GOAL SWM-2. Reduce pollutant loads and impacts to water bodies and encourage ground water recharge by reducing the volume of stormwater runoff from development.

Policy SWM-2.1. The Zoning Ordinance will be reviewed and updated as necessary to ensure that volume control standards are consistent with current engineering practices and current regulations of local watershed management organizations and state agencies having jurisdiction within the City.

Policy SWM-2.2. The Zoning Ordinance will be reviewed and updated as necessary to minimize the area of impervious surfaces required with development.

Policy SWM-2.3. Where practical, the City will encourage the use of infiltration systems, taking into consideration site limitations such as soil conditions, depth to ground water, safety, snow removal, and maintenance issues.

Policy SWM-2.4. The City will minimize impervious surfaces where feasible when reconstructing streets and other paved surfaces.

Policy SWM-2.5. The City will carefully review any developments proposed for land locked basins and verify that adequate measures have been taken to minimize impervious surface, promote infiltration, and provide an acceptable level of flood protection.

GOAL SWM-3. Provide adequate storage and conveyance of runoff to protect the public safety and minimize property damage.

Policy SWM-3.1. The City will enforce the standards within the Subdivision Ordinance to ensure that adequate drainage facilities and easements are provided with land development.

Policy SWM-3.2. The City will enforce its Building Code to ensure that new structures are adequately elevated above identified flood elevations, especially properties located within land locked basins.

Policy SWM-3.3. The Subdivision Ordinance and Building Code will be reviewed and updated as necessary to ensure that flood control standards are consistent with current engineering practices.

GOAL SWM-4. Reduce the nutrient and sediment loads discharged from land development.

Policy SWM-4.1. The City will enforce the stormwater management practices within the Zoning Ordinance and its Surface Water Pollution Prevention Plan (SWPPP) to ensure that water quality is protected as development occurs.

Policy SWM-4.2. The stormwater management practices in the Zoning Ordinance will be enforced to ensure that direct discharge of untreated stormwater runoff to water bodies is prohibited.

Policy SWM-4.3. The Zoning Ordinance will be reviewed and updated as necessary to ensure that water quality treatment standards are consistent with current engineering practices and current regulations of local watershed management organizations and state agencies.

Policy SWM-4.4. The City's Community Development Department and/or City Engineer coordinates development review activities with the WMO's. City staff and CCWMO or MCWD staff work closely together during the review of all phases of the development process beginning with the sketch plat phase when developers are directed to meet with CCWMO or MCWD staff. Joint meetings with the developer will be conducted where applicable. The City does not approve construction for new development until approvals have been obtained from CCWMO or MCWD when applicable.

GOAL SWM-5. Prevent sediment from construction sites from entering the City's surface water resources.

Policy SWM-5.1. The City will enforce an Erosion and Sediment Control Ordinance as outlined in its NPDES Permit.

Policy SWM-5.2. The City will periodically review its Erosion and Sediment Control Ordinance and make revisions as necessary.

Policy SWM-5.3. Erosion and sediment control shall conform to the standard practices consistent with current engineering practices and current regulations of local watershed management organizations and state agencies having jurisdiction within the City.

Policy SWM-5.4. The City will encourage preservation of natural vegetation to the greatest extent practical.

Policy SWM-5.5. The City will assess the need for erosion control at locations identified by the MCWD HHPLS and other locations in the City where excessive velocities may be contributing to local erosion.

GOAL SWM-6. Protect the City's wetlands, lakes, streams and ground water to preserve the functions and values of these resources for future generations.

Policy SWM-6.1. The City will cooperate with local watershed management organizations, other local governments, and state agencies to implement lake management plans, the Wetland Conservation Act (WCA), buffer standards, ground water protection rules, and TMDL studies.

Policy SWM-6.2. The Subdivision Ordinance will be amended to require a copy of each proposed preliminary plat, and iterations thereof, be provided to the District for informational purposes at the time it is submitted to the City within 180 days of the adoption of this Plan.

GOAL SWM-7. Protect and preserve wetland to maintain or improve their function and value.

Policy SWM-7.1. The City will apply the applicable WMO policies and performance standards for wetlands within each watershed. The City will update its Code with the most recent watershed and City requirements for buffers and other wetland protection and management standards.

Policy SWM-7.2. Prior to development activities or public projects, a wetland delineation must be completed, including a field delineation and report detailing the findings of the delineation.

Policy SWM-7.3. The City will require that developers complete a Functions and Values Assessment for any wetland that has not been assessed by the Minnehaha Creek Watershed District or Carver County. The assessment shall use the Minnesota Routine Assessment Method (MNRAM) 3.0 methodology (or most recent version of MNRAM), and shall be submitted along with the wetland delineation report. Wetland buffers and management standards of the watershed organizations or City will be enforced based on the completed assessment.

Policy SWM-7.4. The City will identify and implement opportunities to enhance the functions and values of degraded wetlands within the City, as a part of park projects, infrastructure projects, or other projects.

Policy SWM-7.5. The City will require natural buffer zones around ponds and wetlands.

Policy SWM-7.6. Buffer areas should not be mowed or fertilized, except that harvesting of vegetation may be performed to reduce nutrient inputs.

Policy SWM-7.7. Runoff must be pre-treated prior to discharge to wetlands.

Policy SWM-7.8. The City subdivision ordinance states that no lot shall contain any land that is a delineated wetland, a required wetland buffer, or land that would be inundated by the ordinary high water level (OHWL) of a NURP pond.

GOAL SWM-8. Manage lakes to improve water quality and protect resource values.

Policy SWM-8.1. The City will cooperate with local water management organizations to complete and implement lake management plans, through management of land use, local infrastructure, and enforcing the City's stormwater management requirements.

Policy SWM-8.2. The City will work in partnership with MCWD to monitor conditions in Lake Tamarack, including citizen volunteer monitoring and periodic aquatic vegetation monitoring.

Policy SWM-8.3. The City will work in partnership with MCWD and Carver County to reduce colonization and continued distribution of harmful exotic species within City lakes.

Policy SWM-8.4. The City will work in partnership with MCWD to identify specific steps for the achievement of required phosphorus load reductions assigned to the City of Victoria. The City will also provide an annual report to the MCWD that will summarize the progress towards this goal.

GOAL SWM-9. Improve water quality, provide wildlife habitat and protect the resource value of streams.

Policy SWM-9.1. The City will cooperate with local water management organizations to improve water quality and natural resources associated with streams by managing land use, local infrastructure, and enforcing the City's stormwater management requirements.

Policy SWM-9.2. The City will work with MCWD to evaluate and repair erosion on Six Mile Creek that is contributing to downstream sediment conveyance.

GOAL SWM-10. Address target pollutants identified in TMDL studies to improve the quality of impaired waters.

Policy SWM-10.1. The City will amend the stormwater management practices required in the Zoning Ordinance to implement pollutant load reductions identified in TMDL studies for impaired lakes.

Policy SWM-10.2. This surface water management plan will be amended to incorporate completed TMDL studies.

Policy SWM-10.3. The City will use the findings of the TMDL studies to guide development review.

GOAL SWM-11. Protect ground water resources and ground water dependent resources.

Policy SWM-11.1. The City will require pretreatment for infiltration practices based on their location within the Ground water Impact Zone, and discourage use of infiltration practices where the use of these practices is likely to cause the transport of contaminants into the ground water.

Policy SWM-11.2. The City will implement its wellhead protection plan (WHPP).

GOAL SWM-12. Manage the City's shorelands to preserve the functions and values of these resources.

Policy SWM-12.1. The City will enforce the shoreland elements of its Zoning Ordinance, and update these elements as required by state or federal agencies.

Policy SWM-12.2. The City will regulate development with the Shoreland Overlay District to minimize impacts to local water bodies and associated shoreland areas as required in the Zoning Ordinance and Minnesota Rules.

GOAL SWM-13. The City will implement the Best Management Practices (BMPs) identified in its Surface Water Pollution Prevention Plan (SWPPP) to prevent pollution of surface water in the City. The SWPPP will be adopted as part of this LSWMP and is included in the Appendix.

Policy SWM-13.1. The City will implement the Public Education and Outreach program detailed in the SWPPP.

Policy SWM-13.2. The City will comply with the Public Notice requirements, and solicit public input and opinion on the adequacy of the SWPPP.

Policy SWM-13.3. The City will implement the Regulatory Control Program and illicit discharge detection and elimination programs included in the SWPPP.

Policy SWM-13.4. The City will update its erosion and sedimentation ordinance to meet NPDES requirements, and continue to enforce the compliance measures adopted by the City.

Policy SWM-13.5. The City will work with local WMO's, contractors and developers to implement construction site erosion and sediment control BMP's.

Policy SWM-13.6. The City will develop and implement a waste control program for construction site operators.

Policy SWM-13.7. The City will continue to implement its procedures for site plan review, reports of stormwater noncompliance, and procedures for site inspections and enforcement.

Policy SWM-13.8. The City will review and update its requirements for structural and nonstructural BMP's.

Policy SWM-13.9. The City will continue its inspection and maintenance program for BMP's. Policy: The City will install all new stormwater infrastructure on City-owned outlots.

Policy SWM-13.10. The City will continue its ongoing MS4 inspection and cleaning program, and implement its Pollution Prevention Plan inspection and maintenance procedures.

GOAL SWM-14. Preserve, conserve and enhance the natural resources and connecting greenway corridors within the City.

Policy SWM-14.1. The City will implement the goals and policies in the Comprehensive Plan to conserve, protect and enhance the ecological values of these areas for the future, including the following policies:

Policy SWM-14.2. Protect and improve the quality of the surface water, ground water, and shoreline areas within Victoria.

Policy SWM-14.3. Identify and protect unique natural resources such as floodplains, wetlands, steep slopes, woodlands and prairies. The remaining areas of “Big Woods” are a high priority for protection. These areas have been mapped on the Natural Resource Priority Areas and Greenway Corridors Map.

Policy SWM-14.4. Direct development away from environmentally sensitive areas and natural resources. Guide the location and design of development to minimize any adverse impact on the quality of surface waters, aquifers, wetlands, steep slopes, woodlands and prairies.

Policy SWM-14.5. Cooperate with Carver County, neighboring communities, and other levels of government to protect natural resources.

Policy SWM-14.6. Require that Developers identify the Natural Resource Priority Areas and Greenway Corridors on plat submittals, and identify how these areas will be protected or enhanced in their development plan. The City will carefully review preliminary plats, zoning ordinance provisions, and Planned Unit Development (PUD) Conservation Subdivision Design provisions to assure that priority resources are protected.

Policy SWM-14.7. Preserve environmentally sensitive and unique areas for the public by acquiring such area through dedication as public park or open space, purchase, conservation easements, sensitive design and other means, or by establishing private open space under the jurisdiction of an owner’s association or a covenant.

Policy SWM-14.8. Delineate and protect greenway corridors to connect natural communities, parks and open spaces, and protect their health for the long term.

Policy SWM-14.9. Use the community-wide goals and the provisions of the comprehensive plan to achieve and preserve an ecological balance between land use, transportation, community facilities, and the natural environment.

Policy SWM-14.10. Encourage developers to use Conservation Subdivision Design when developing property.

GOAL SWM-15. Establish adequate funding mechanisms for Plan implementation and appropriate to meet the City’s capital improvement requirements.

Policy SWM-15.1. Identify and establish funding mechanisms to support the implementation of this Plan.

IMPLEMENTATION ACTIONS

Specific implementation actions to be completed include the following:

1. The City concurs with and adopts the CCWMO and MCWD Watershed Management Plans, standards, and rules. The CCWMO and MCWD will continue to enforce surface water regulations and permitting within the City within their boundary at this time. The City will coordinate its review of development proposals with both agencies and will manage land use to support protection of surface and ground waters through its ordinances. *Ongoing*
2. As growth is extended into CCWMO, it is necessary to develop watershed modeling information for those land areas. By June 1, 2019, the City will delineate drainage areas, determine flows, volumes rates and routing for each drainage area within CCWMO. *June - 2019*
3. The City will support the CCWMO and MCWD with implementation of their standards for management of water quantity and quality, including control of peak runoff, volume control, infiltration and filtration, wetland quality, and best management practices to control Total Suspended Solids (TSS), Total Phosphorus (TP), and runoff from development or redevelopment within the City. The agencies will play the primary role in reviewing the stormwater plans for development applications within the City, and implement their rules through the review and permit process. The City will provide comments on development applications to the agencies during the review process. *Ongoing*
4. The City will update its ordinances, as necessary, to be consistent with the standards and rules of regulatory agencies. *2019-2020 and ongoing*
5. The City will coordinate its review of development proposals with the Wellhead Protection Program. *Ongoing*
6. The City will cooperate with the CCWMO and MCWD to address concerns related to impaired waters and as the agencies complete TMDL studies. *Ongoing*
7. The MCWD Watershed Management Plan included many potential projects for improvements to the subwatersheds within the City of Victoria. The City will continue to work in close partnership with MCWD to identify and program priorities in these areas. *Ongoing*
8. The MCWD Six Mile Creek-Halsted Bay Subwatershed Plan identifies key implementation priorities for the area partners and includes over \$30 million in capital improvements over the next 10 years using a combination of grant funds, partner contributions and MCWD funds. The City will work with the Six Mile Creek-Halsted Bay Subwatershed Partnership as it pursues prioritization, funding sources and implementation of the projects identified in the Plan. The city will review the plan an project list on an annual basis and will incorporate updates as needed in coordination with applicable watershed organizations. *Ongoing*

CAPITAL IMPROVEMENT PLAN

The City of Victoria maintains and updates its Capital Improvement Plan on a regular basis. The current 2018 through 2020 CIP includes the following stormwater related projects. More detail on these projects is available from the adopted CIP program for 2018-2022.

- » Parkwood Culvert Replacement - Project 18-SWM-002 - Replacing a failing outlet control structure.
- » Various annual street improvement projects will include stormwater related improvements.
- » Various equipment purchases including purchase of a new street sweeper will enable staff to properly maintain and manage stormwater related activities and operations.

In addition to the Capital Improvement Plan, the City's annual budget includes funding for maintenance and water quality improvements with specific scope and location to be determined on an annual basis based on opportunities. As an example, in 2018, MCWD partnered with the City to obtain grant funds to expand the Downtown Regional ponding system to provide additional treatment to water from Downtown as well as from Church Lake which flows to East Auburn which is an impaired water. The City used stormwater utility funds as the local match to the grant.

Through the ongoing partnership with MCWD and CCWMO, the City will continue to prioritize funding to support the priorities developed through this process.

CITY ORDINANCES

The City has adopted ordinances that provide standards and regulations to manage water resources. These include the following:

- » Chapter 8, Article II, Surface Water Drainage
- » Chapter 26, Article IV, Storm Drainage Utility
- » Chapter 30, Article VII, Shoreland District Requirements
- » Chapter 30, Article XVIII, Tree Preservation and Replacement
- » Chapter 30, Article XX, Stormwater Management
- » Ordinance Number 429, Flood Protection

After the LSWMP and 2040 Comprehensive Plan are adopted, the City will revise or update its ordinances as described in the Goals and Policies section of this plan, to ensure that they meet state requirements and are consistent with the goals of this LSWMP. Ordinance updates will be completed within 9 months of the adoption.

COORDINATION & PARTNERSHIP WITH WATERSHED ENTITIES

Given the complexity of rules, regulations and agencies governing water in the state of Minnesota, it is important that agencies partner and work together to meet requirements. Specifically, support is needed from MCWD and CCWMO to assist the City in areas such as meeting requirements of the Wetland Conservation Act, the MS4 permit including public education and outreach, construction and post construction stormwater management and addressing TMDLs for impaired waters, along with any other mutually identified goals. Improved outcomes can undoubtedly be achieved through coordination and partnership.

The City will meet with both CCWMO and MCWD annually to review activities completed in the previous year and to review activities programmed for the upcoming year to help better identify areas and opportunity for collaboration.

The following outlines the ongoing coordination efforts between the City and MCWD and CCWMO:

- » Regular meetings - Staff members will meet regularly (as least biannually with MCWD and annually with CCWMO) to review activities from the previous year and draft capital improvements for each entity programmed for the upcoming year. City staff will provide updates on ongoing MS4 related activities, annexation and development activities. It is anticipated that the Community Development Director, Director of Parks and Public Works and City Engineer will attend the meeting(s) on behalf of the City.
- » Land Use Planning - Planning staff will inform MCWD and CCWMO of any land use changes from the approved comprehensive plan and any planned annexations. Approvals of land use applications will be coordinated such that applicants will be directed to meet with MCWD or CCWMO staff during the sketch plan process and no final approval for construction will be granted until such time as final approval has been granted by MCWD or CCWMO.
- » Regulatory activities - Planning staff will require documentation of appropriate MCWD or CCWMO construction and land alteration permits as a condition of City approval. Approved permits will be stored with other project documentation for future reference. Within MCWD areas, MCWD staff will provide reporting of annual permitting and inspections for the City's use in completing annual MS4 reports. Copies of the City's MS4 Annual Report will be provided to MCWD and CCWMO.
- » Wetland Conservation Act enforcement - MCWD is the LGU for Wetland Conservation Act (WCA) applications and will continue to inform City planning and engineering staff of applications and progress towards approvals for each applicant. CCWMO will be the LGU for growth areas within CCWMO.

- » Funding – The City seeks support from MCWD and CCWMO in terms of grant funding for water quality projects. The City requests that MCWD and CCWMO staff continue to provide information about upcoming grants and other funding opportunities.
- » Data Sharing – City staff members will coordinate with MCWD and CCWMO staff to share any new or relevant data on an annual basis to ensure consistency. This data could be related to any newly completed studies, water quality monitoring, BMP performance monitoring, etc.
- » Public Improvement Projects – City staff members will provide yearly updates on plans for public improvement projects. This will be coordinated as part of the annual meeting while discussing the draft Capital Improvement Plan. When requested, maintenance activities for stormwater infrastructure will be provided as part of the MS4 recording process and City inspection reports.