



Title: Approval of Wassermann Lake Preserve Interpretive Plan and Authorization to Solicit Quotes

Resolution number: 20-053

Prepared by: Name: Anna Brown
Phone: (952) 641-4522
abrown@minnehahacreek.org

Reviewed by: Name/Title: Michael Hayman, Project Planning Manger

Recommended action: Approve the interpretive proposal for the Wassermann Lake Preserve and authorize staff to solicit quotes for fabrication and installation

Schedule: June 2020: Solicit quotes
July 2020: Award fabrication contract
Fall 2020: Interpretive signage installation

Budget considerations: N/A

Past Board action: Res # 20-027 Contract award for Wassermann Lake Preserve Interpretive Signage

Summary:

Since 2017, the Minnehaha Creek Watershed District (MCWD) and City of Victoria have been working in partnership to jointly develop a park and natural resource restoration project on an undeveloped parcel on the western shoreline of Lake Wassermann. The project includes woodland, prairie and wetland habitat restoration, nature-based play features, a shelter with four-season restrooms, a fishing pier, and trails and boardwalk, amongst other amenities. The project is complimented by numerous efforts to address the impairment of Wassermann Lake, including: an alum treatment of a six acre pond on site; a subwatershed wide carp management program; wetland restoration in the upstream drainage area; and a planned alum treatment on Wassermann Lake itself in 2021. The Wassermann Lake Preserve project offers an opportunity to showcase the improvements to Wassermann Lake and the SMCHB Subwatershed while creating a unique recreational asset for Victoria residents.

Site interpretation will be an important element of the overall Wassermann Lake Preserve plan and will help define the user experience. Wassermann Lake Preserve will be a flagship project in the integrated implementation approach to which MCWD has committed in its pursuit of high impact capital projects that create meaningful progress towards water quality and ecological integrity in the subwatershed. The interpretive planning effort presents an opportunity to not only define unique natural elements of the site, but also to contextualize the site in the broader context of our work in the Six Mile Creek-Halsted Bay Subwatershed.

At the April 9, 2020 Operations and Programs Committee (OPC) meeting, staff presented the recommended interpretive approach for the Wassermann Lake Preserve project. The proposal presents a unique approach to interpretation, which includes a central signage hub with more traditional signage elements, and more artful, abstract interpretive elements at other key locations in the preserve. After reviewing the preliminary design and the opinion of probable cost for fabrication and installation of the interpretive proposal, the Board of Managers approved the design scope with Aune Fernandez Landscape Architects to carry the proposal through final design and bidding.

At the June 23, 2020 meeting, the Board will review the final interpretive design proposal and staff will seek authorization to solicit quotes for fabrication and installation. Solicitation of quotes will be managed as two separate packages: the fabrication of the interpretive signage will be competitively solicited from known manufacturers specializing in this type of steel work; and the installation will be solicited as a price request from LinnCo, Inc, the contractor completing the park project. If we are unable to get a competitive price from the contractor, several of the known signage vendors also have installation capabilities.

As discussed at the April 9, 2020 OPC meeting, if costs for fabrication and installation exceed to opinion of probable cost of \$107,500, staff will propose a value engineering approach that eliminates certain interpretive elements from the final package.

Supporting documents:

- Wassermann Lake Preserve Interpretive Program Proposal



RESOLUTION

Resolution number: 20-053

Title: Approval of Wassermann Lake Preserve Interpretive Plan and Authorization to Solicit Quotes

- WHEREAS the Minnehaha Creek Watershed District (MCWD) and City of Victoria (“City”) identified the Wassermann West property (the Property) as an opportunity for coordinated project development to meet strategic goals of both the MCWD and City by improving lake water quality, protecting and enhancing riparian wetland and shoreline, and affording public access to Wassermann Lake, among other potential project benefits;

- WHEREAS on May 11, 2017, the MCWD Board of Managers authorized the execution of a cooperative agreement with the City that provided for the development of preliminary plans for public natural resource restoration and recreational improvements for the Wassermann Lake Preserve Project (Project);

- WHEREAS on May 23, 2019, the MCWD Board of Managers approved the second cooperative agreement, identifying shared responsibilities in carrying the Project through final design and construction, and authorizing staff to prepare a design and construction oversight scope for Board review and approval;

- WHEREAS on December 9, 2019, the City Council approved 90% design for the Project with a construction cost estimate of \$2,375,970, and established a not to exceed construction budget of \$2.63 million;

- WHEREAS on December 19, 2019, the MCWD Board of Managers approved 90% design for the Project, and authorized staff to solicit bids for Project construction;

- WHEREAS on February 13, 2020, the MCWD Board of Managers awarded a construction contract to LinnCo, Inc. to implement the Wassermann Lake Preserve site improvements;

- WHEREAS site interpretation is an important component of the Project master plan, providing public education on the unique natural features of the site and the value of this work in the context of the SMCHB Subwatershed and Minnehaha Creek Watershed, while also activating the site to enhance the public’s experience of its amenities;

- WHEREAS at the April 9, 2020 Operations and Program Committee, the Committee reviewed the preliminary proposal for site interpretation and concurred in the direction of the site programming;

- WHEREAS on April 9, 2020, the MCWD Board of Managers approved a contract with AFLA to carry the preliminary site interpretation concept through final design, bidding, and installation.

NOW, THEREFORE, BE IT RESOLVED that the Minnehaha Creek Watershed District Board of Managers approves the Wassermann Lake Preserve interpretive plan and authorizes the District Administrator to solicit bids for construction.

Resolution Number 20-053 was moved by Manager _____, seconded by Manager _____. Motion to adopt the resolution ___ ayes, ___ nays, ___ abstentions. Date: June 23, 2020.

Secretary Date:

WASSERMANN LAKE PRESERVE INTERPRETIVE PROGRAM



**MINNEHAHA CREEK
WATERSHED DISTRICT**
QUALITY OF WATER, QUALITY OF LIFE



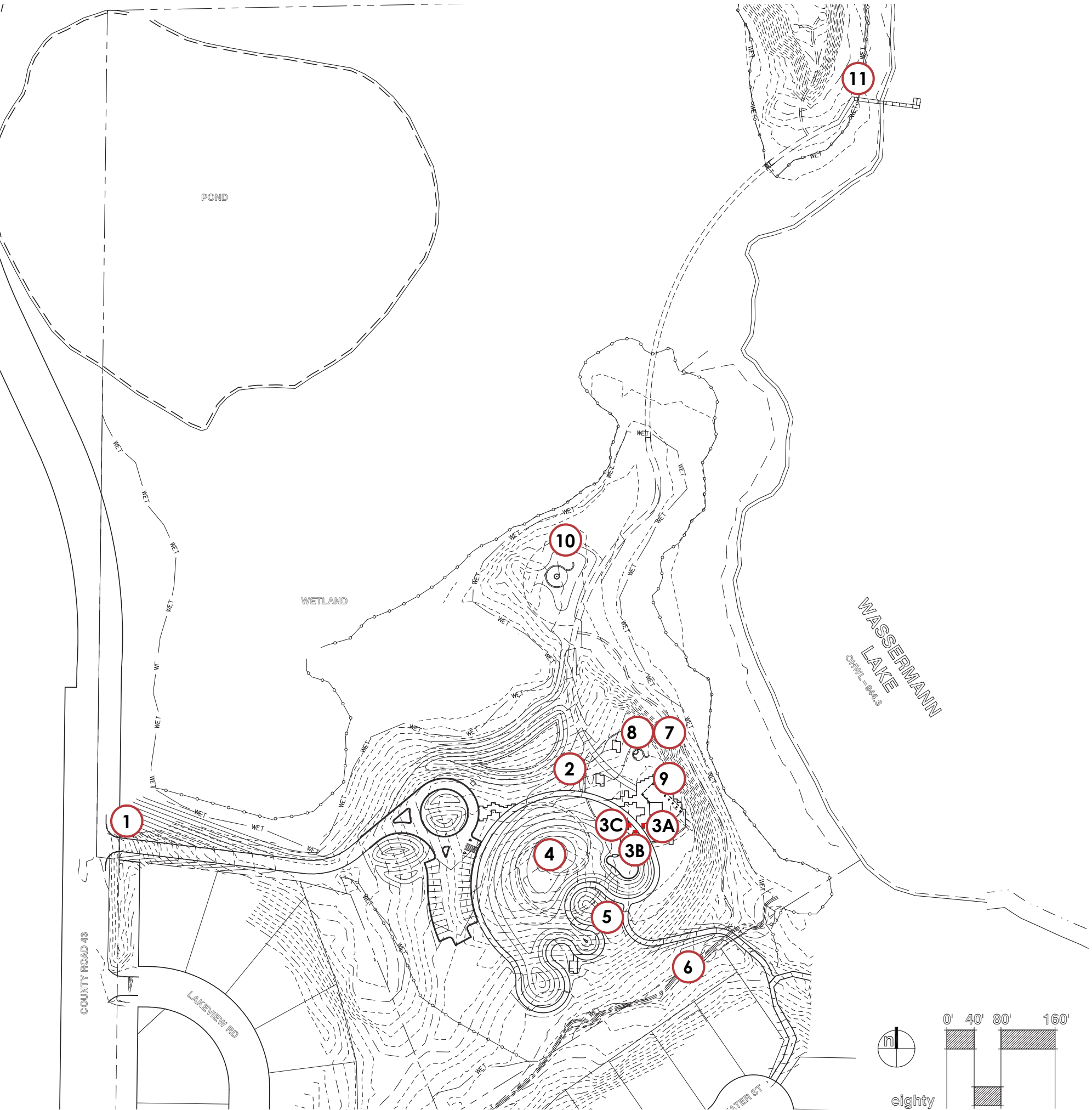
INTERPRETIVE NARRATIVE AND ORGANIZATION

central narrative

"land and water are connected"

interpretive interventions

- 1 - monument sign with oak silhouette
- 2 - cordwood walls
- 3 - interpretive hub
 - sign a: past - history and restoration*
 - sign b: present - Wassermann Preserve*
 - sign c: future - habitat of Victoria & larger watershed significance*
- 4 - watershed walk
- 5 - prairie to forest
- 6 - flow of water
- 7 - legacy oak
- 8 - wave seat walls
- 9 - wave benches & exposed aggregate concrete
- 10 - wetland transition
- 11 - lake chime



WASSERMANN MONUMENT SIGN

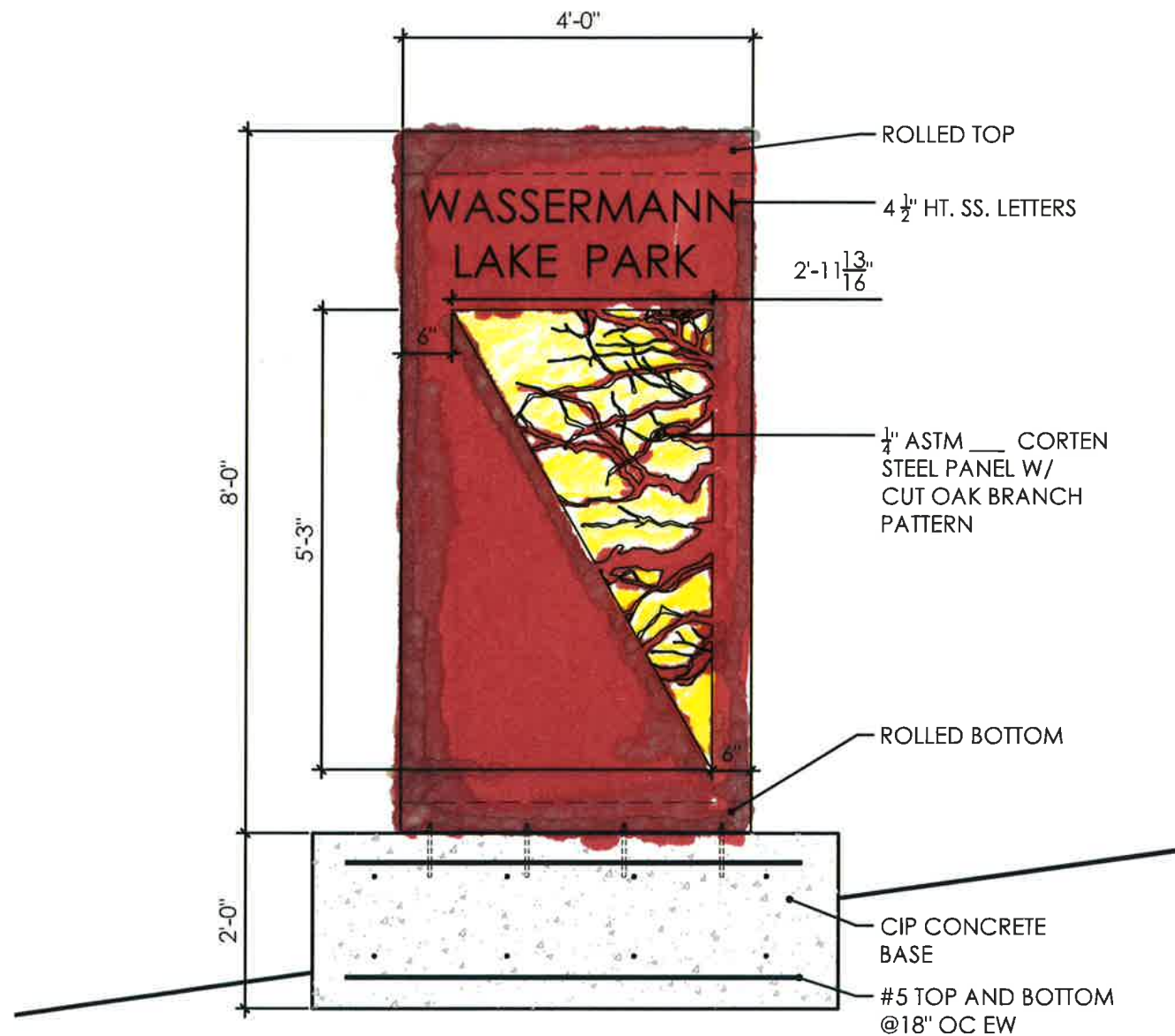
AT THE OAK
- BACK LIT

1. OAK SILHOUETTE MONUMENT SIGN

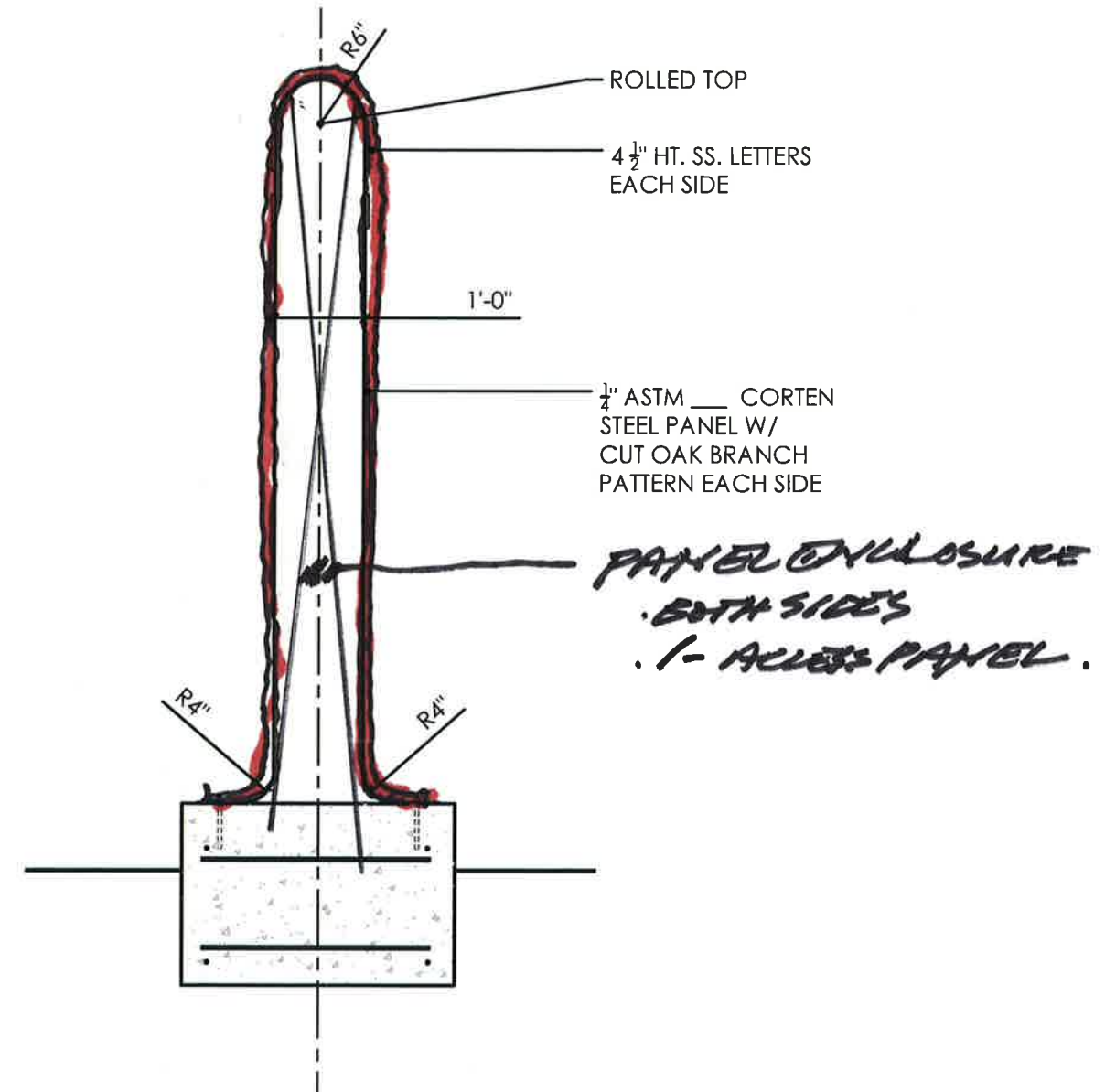
graphic features

- park monument sign is a key identity marker along hwy 43
- back-lit corten cut represents oak silhouette and provides a unique expression of the oak savanna

NORTH ELEVATION



SIDE ELEVATION

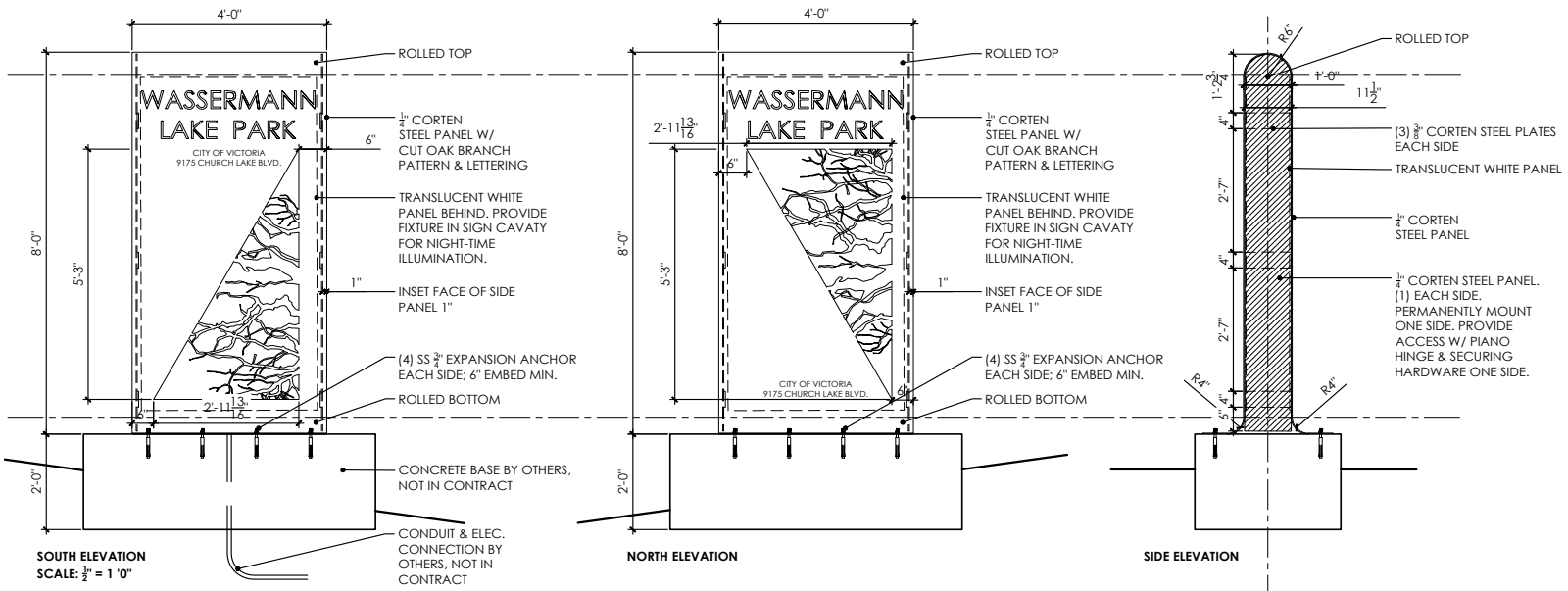
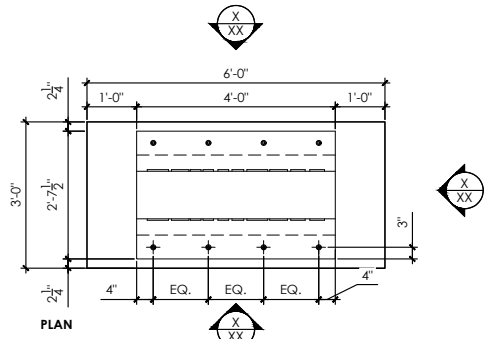


WASSERMANN
LAKE PRESERVE

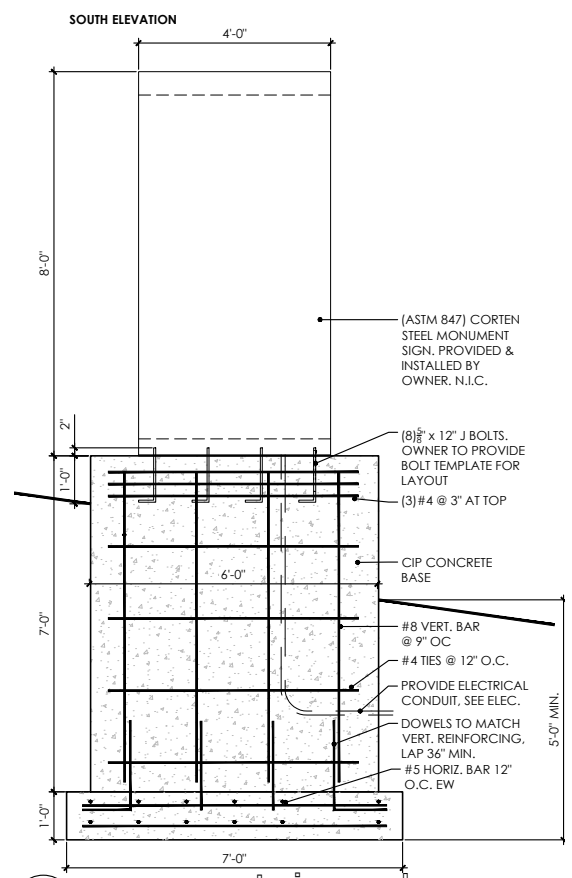


WASSERMANN
LAKE PARK

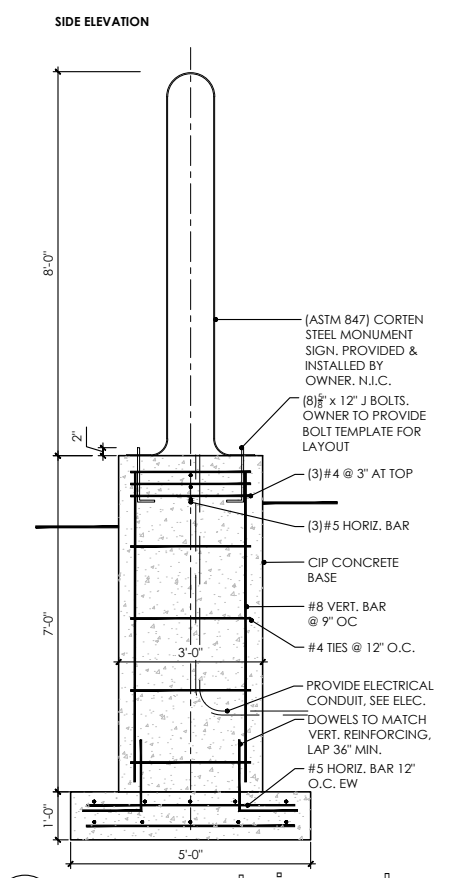




1 monument sign
 Scale: 1/2" = 1'-0"



10 monument sign pad
 Scale: 1/2" = 1'-0"



11 monument sign pad
 Scale: 1/2" = 1'-0"

client
MINNEHAHA CREEK WATERSHED DISTRICT

project
WASSERMANN LAKE PRESERVE - INTERPRETIVE ELEMENTS
 PID 650230600 & PID 650230700
 COUNTY ROAD 43
 VICTORIA, MN 55318

PROJECT NUMBER: 190006

certification

I HEREBY CERTIFY that this plan, specification or report was prepared by me or under my direct supervision and that I am a duly Licensed Professional Architect under the laws of the State of Minnesota.
 SIGNATURE: *James Fernandez*
 TYPED OR PRINTED NAME: JAMES FERNANDEZ
 DATE: 02/14/2020 REG. NO.: 45414

issue / revision

NO	DATE	ISSUE / REVISION

sheet title
DETAILS

THIS SQUARE APPEARS 1/2" x 1/2" ON FULL SIZE SHEETS.

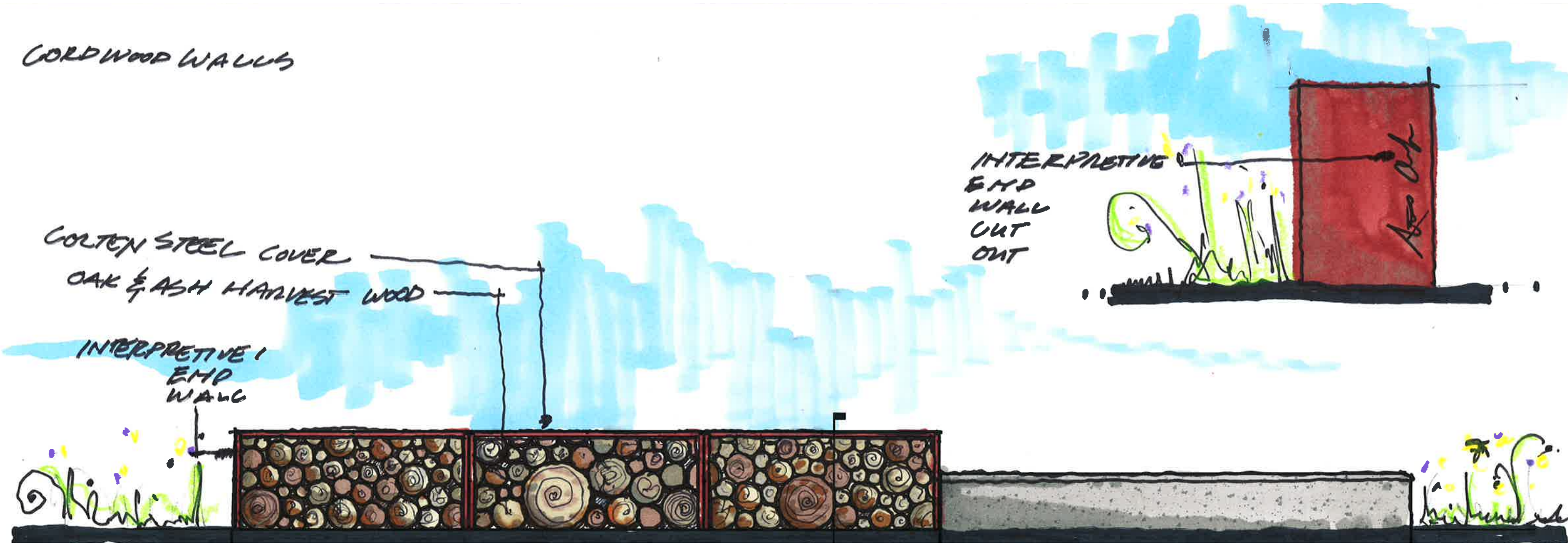
DRAWN BY:
 CHECKED BY:
L3.0

2. SALVAGED CORDWOOD SITE WALLS

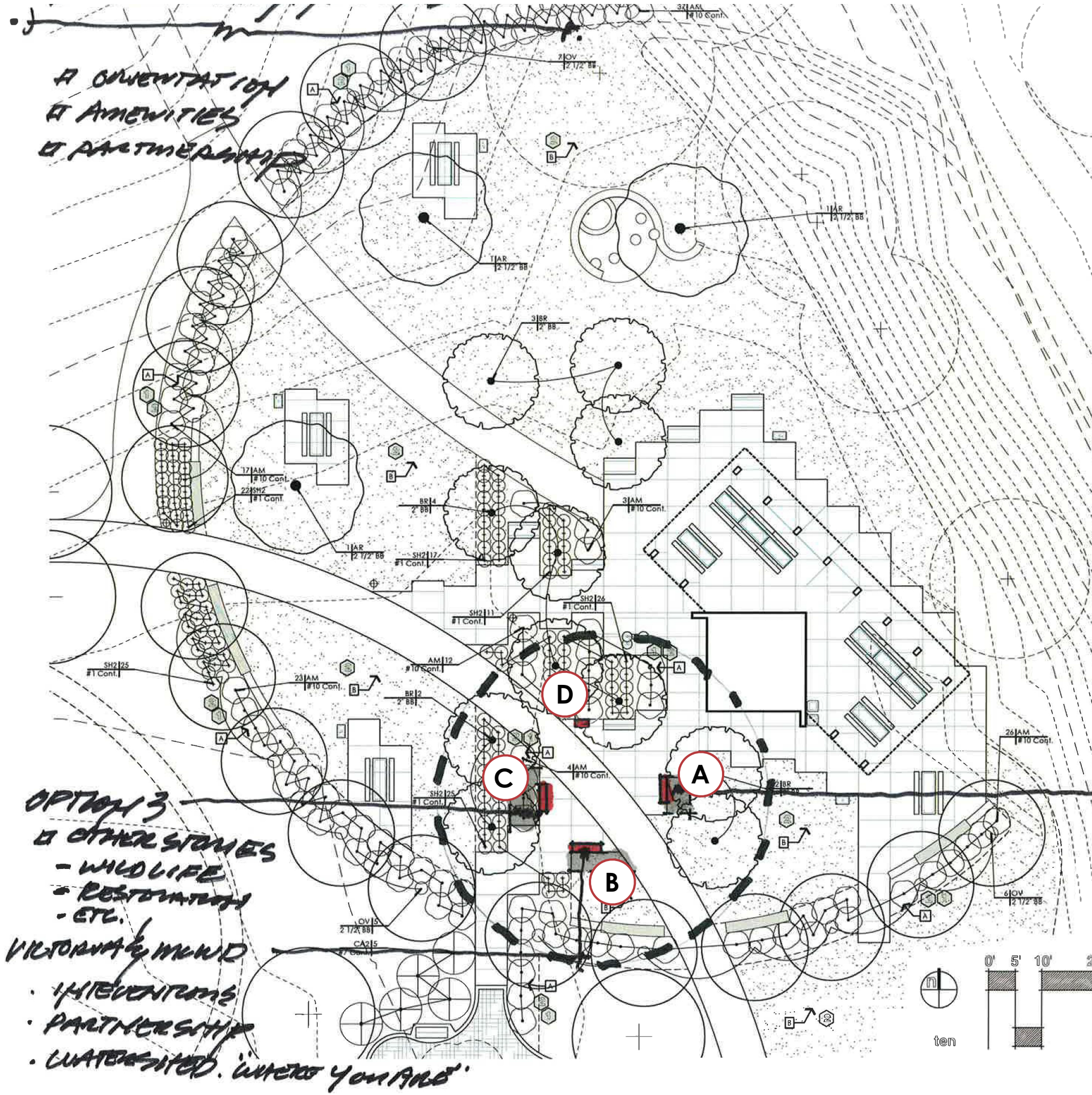
SHELTER PLAZA

graphic features

- walls constructed of oak and ash logs salvaged from site restoration work
- corten steel shroud covers cordwood
- end wall cutouts add direct interpretive narrative to material re-use story



3. INTERPRETIVE HUB PLAN



sign a: story of an oak savanna

front:

- historic vs. modern aerial comparison showing changes to the site and surrounding area (development patterns, vegetation, etc.) and explaining the benefits of restoring the site to an oak savanna.

back:

- expressive cutout of a bur oak tree in an oak savanna environment

sign b: wassermann lake preserve

front:

- map of the preserve to provide orientation to users, overlaid with information on key habitat types found within the park and the species they support.

back:

- contour map of the surrounding area (lower half of six-mile creek) showing relationship between landform, streams, lakes, and wetlands.

sign c: habitats of victoria

front:

- regional map depicting relationship between water, recreation, and habitat nodes and corridors in Victoria and the Six-Mile Creek- Halsted Bay Subwatershed.

back:

- expressive cutout of the Mississippi River Basin draining to the Gulf of Mexico

sign d: interpretive gallery

front:

- map of interpretive elements in the park along with short descriptions.

3. INTERPRETIVE HUB

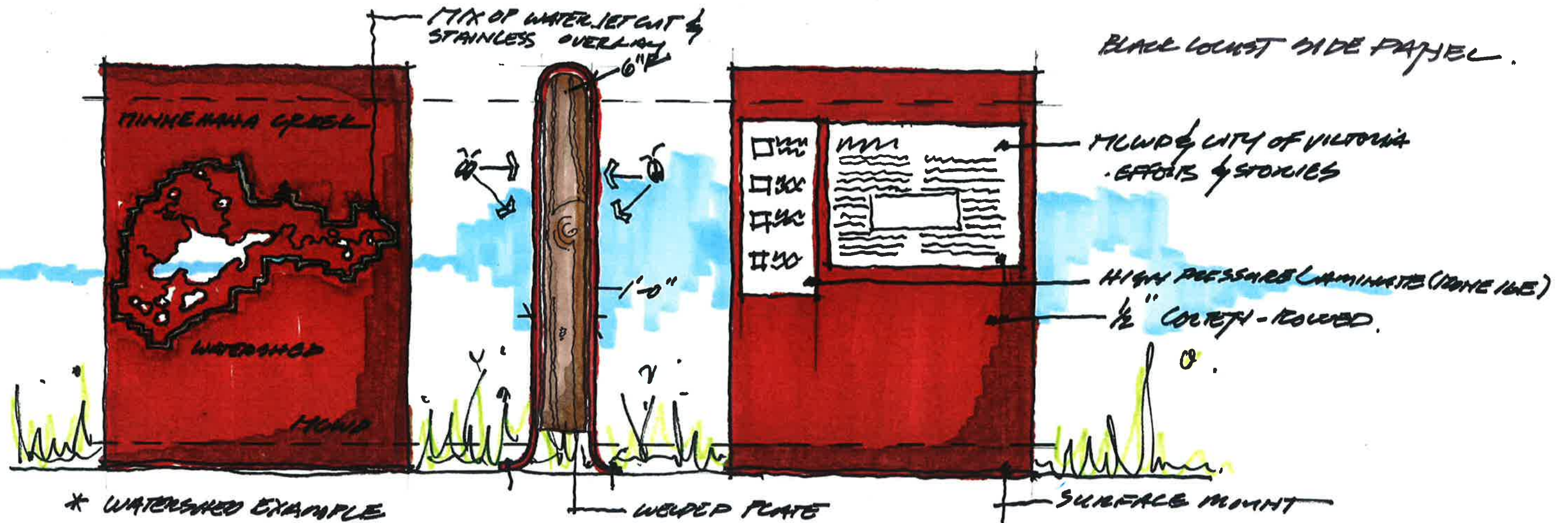
SIGNS A, B, & C

graphic features

- expressive frames cutout from corten
- colorful custom graphic inserts with interpretive images and stories that illustrate the narrative of each panel
- wood side panels match park shelter

HUB: PANEL DESIGN

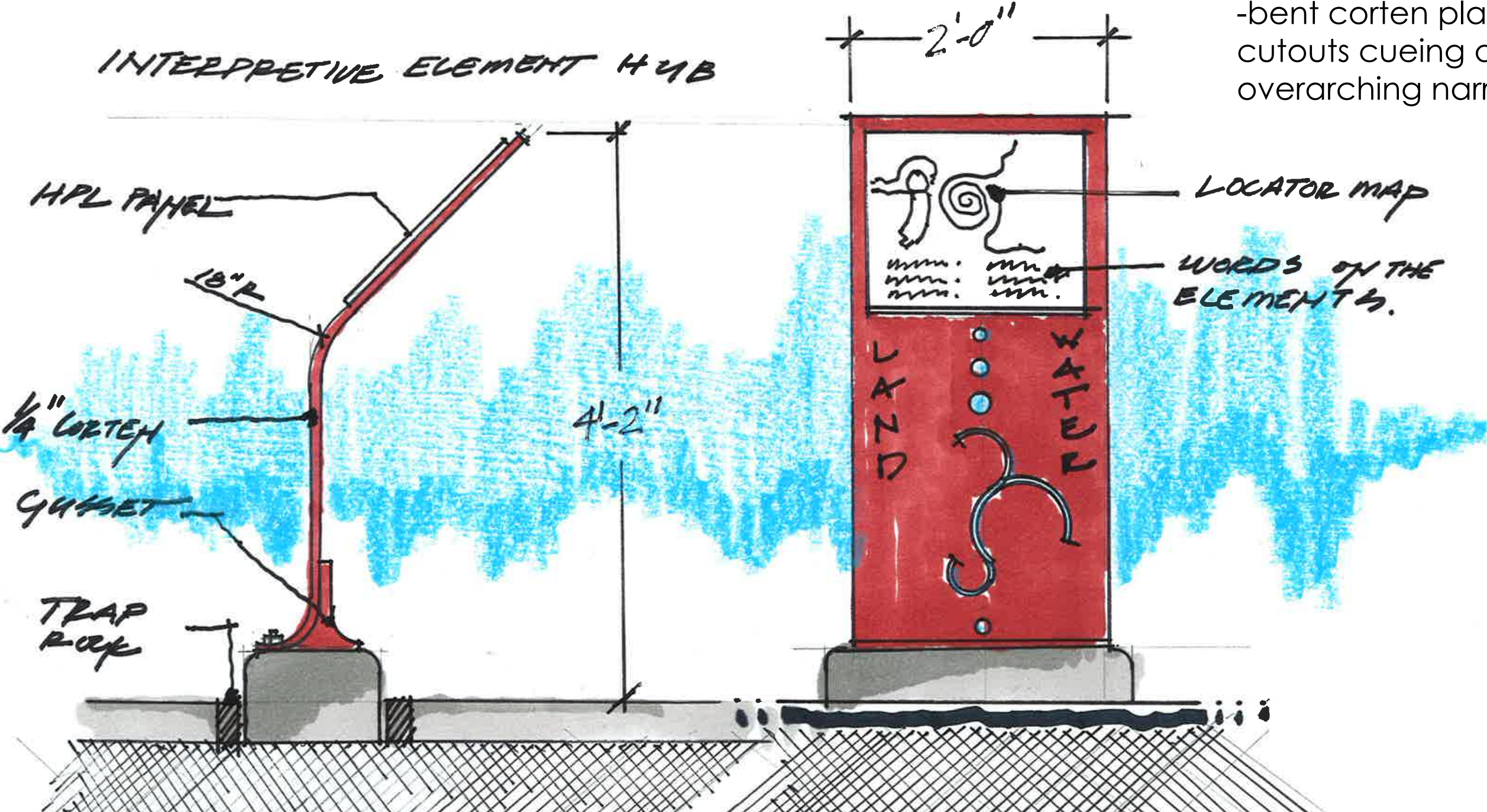
- 2 OR 3 PANELS - 2 SIDED
- RIBBON SIGN
- FLOW



3. INTERPRETIVE HUB SIGN D

graphic features

- high pressure laminate panel with locator map of interpretive elements in the park along with short descriptions of the elements.
- bent corten plate with expressive cutouts cueing audience in to overarching narrative.



WASSERMANN LAKE PRESERVE

HABITATS IN THE PARK

- 1. UPLAND FOREST
- 2. RIVERSIDE
- 3. MEADOWS
- 4. SWAMP
- 5. LAKE

INTERPRETIVE GALLERY

1. INTERPRETIVE GALLERY
2. WASSERMANN LAKE
3. WASSERMANN LAKE PRESERVE
4. WASSERMANN LAKE PRESERVE
5. WASSERMANN LAKE PRESERVE
6. WASSERMANN LAKE PRESERVE
7. WASSERMANN LAKE PRESERVE
8. WASSERMANN LAKE PRESERVE
9. WASSERMANN LAKE PRESERVE
10. WASSERMANN LAKE PRESERVE



MINNEHAHA CREEK WATERSHED



WATERSHED FEATURES

- 1. MINNEHAHA CREEK
- 2. MINNEHAHA CREEK
- 3. MINNEHAHA CREEK
- 4. MINNEHAHA CREEK
- 5. MINNEHAHA CREEK

VICTORIA - CITY OF



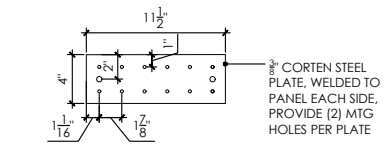
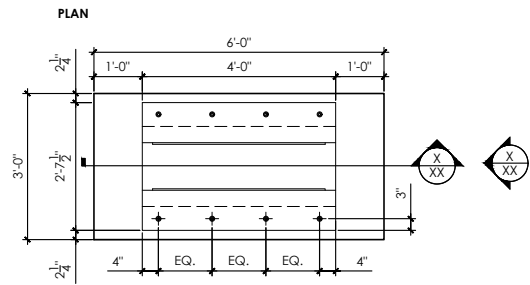
VICTORIA FEATURES

1. WASSERMANN LAKE PRESERVE
2. WASSERMANN LAKE PRESERVE
3. WASSERMANN LAKE PRESERVE
4. WASSERMANN LAKE PRESERVE
5. WASSERMANN LAKE PRESERVE
6. WASSERMANN LAKE PRESERVE
7. WASSERMANN LAKE PRESERVE
8. WASSERMANN LAKE PRESERVE
9. WASSERMANN LAKE PRESERVE
10. WASSERMANN LAKE PRESERVE

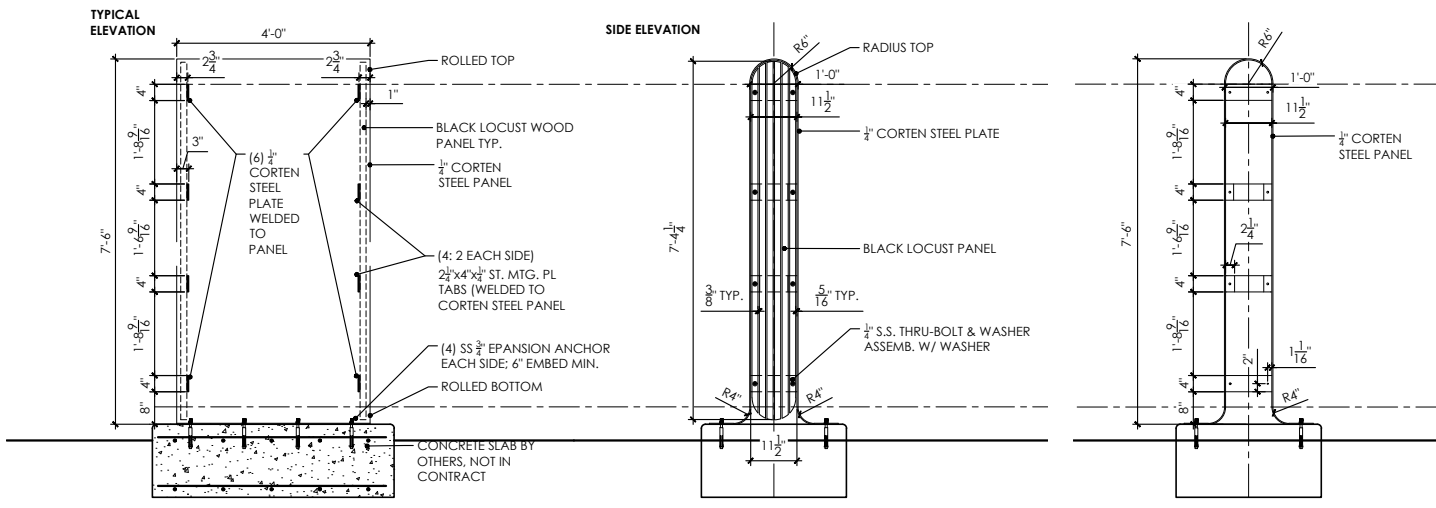


WASSERMANN PARK

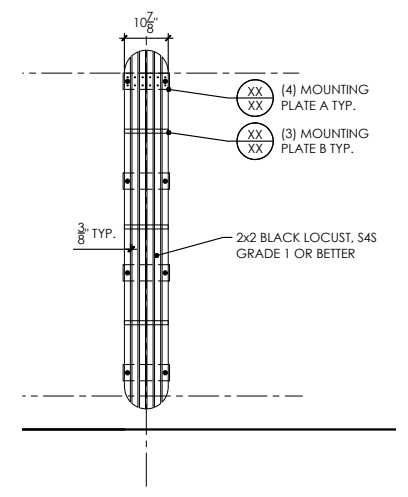
WASSERMANN LAKE PRES



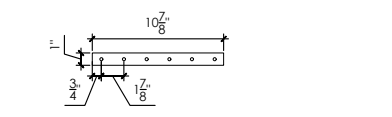
1 mounting plate A typ.
 Scale: 1/2" = 1'-0"



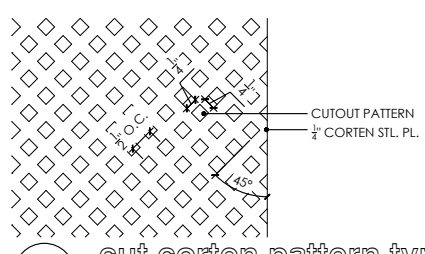
1 hub sign typ.
 Scale: 1/2" = 1'-0"



1 hub sign - wood inset typ.
 Scale: 1/2" = 1'-0"



1 mounting plate B typ.
 Scale: 1/2" = 1'-0"



1 cut corten pattern typ.
 Scale: 6" = 1'-0"

client

MINNEHAHA CREEK WATERSHED DISTRICT

project

WASSERMANN LAKE PRESERVE - INTERPRETIVE ELEMENTS

PID 650230600 &
 PID 650230700
 COUNTY ROAD 43
 VICTORIA, MN 55318

PROJECT NUMBER: 190006

certification

I HEREBY CERTIFY that this plan, specification or report was prepared by me or under my supervision and that I am a duly Licensed Architect under the laws of the State of Minnesota.
PRELIMINARY NOT FOR CONSTRUCTION
 SIGNATURE: *James Fernandez*
 TYPED OR PRINTED NAME: JAMES JAMES FERNANDEZ
 DATE: 11/15/2020 REG. NO.: 45414

issue / revision

NO	DATE	ISSUE / REVISION

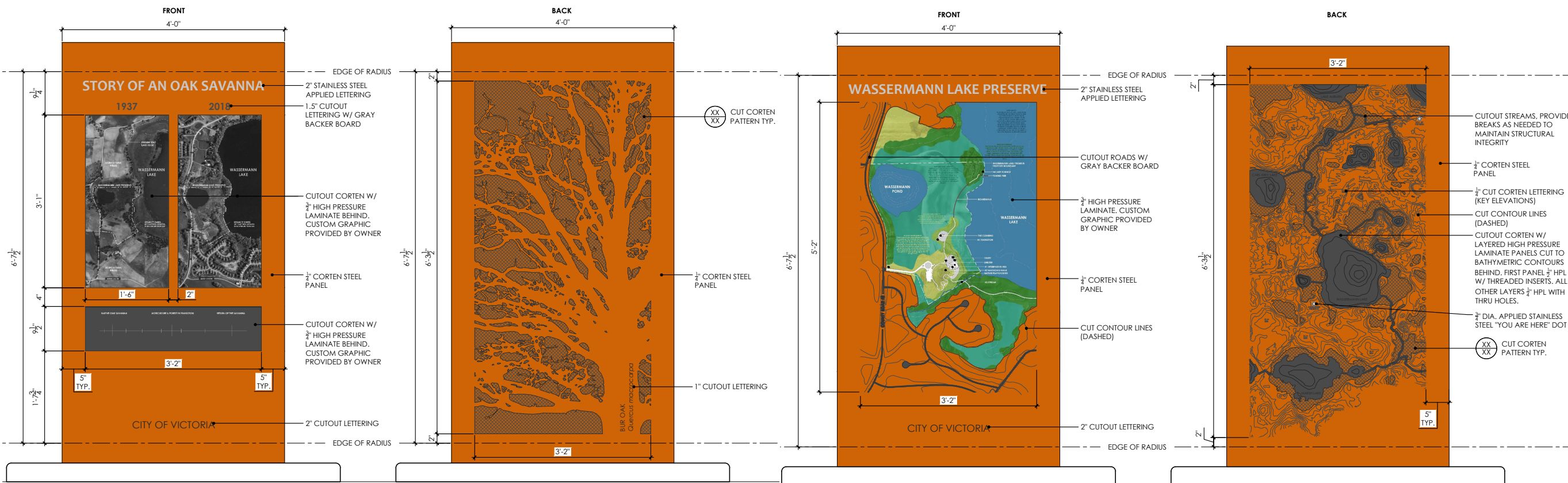
sheet title

DETAILS

THIS SQUARE APPEARS 1/2" x 1/2" ON FULL SIZE SHEETS.

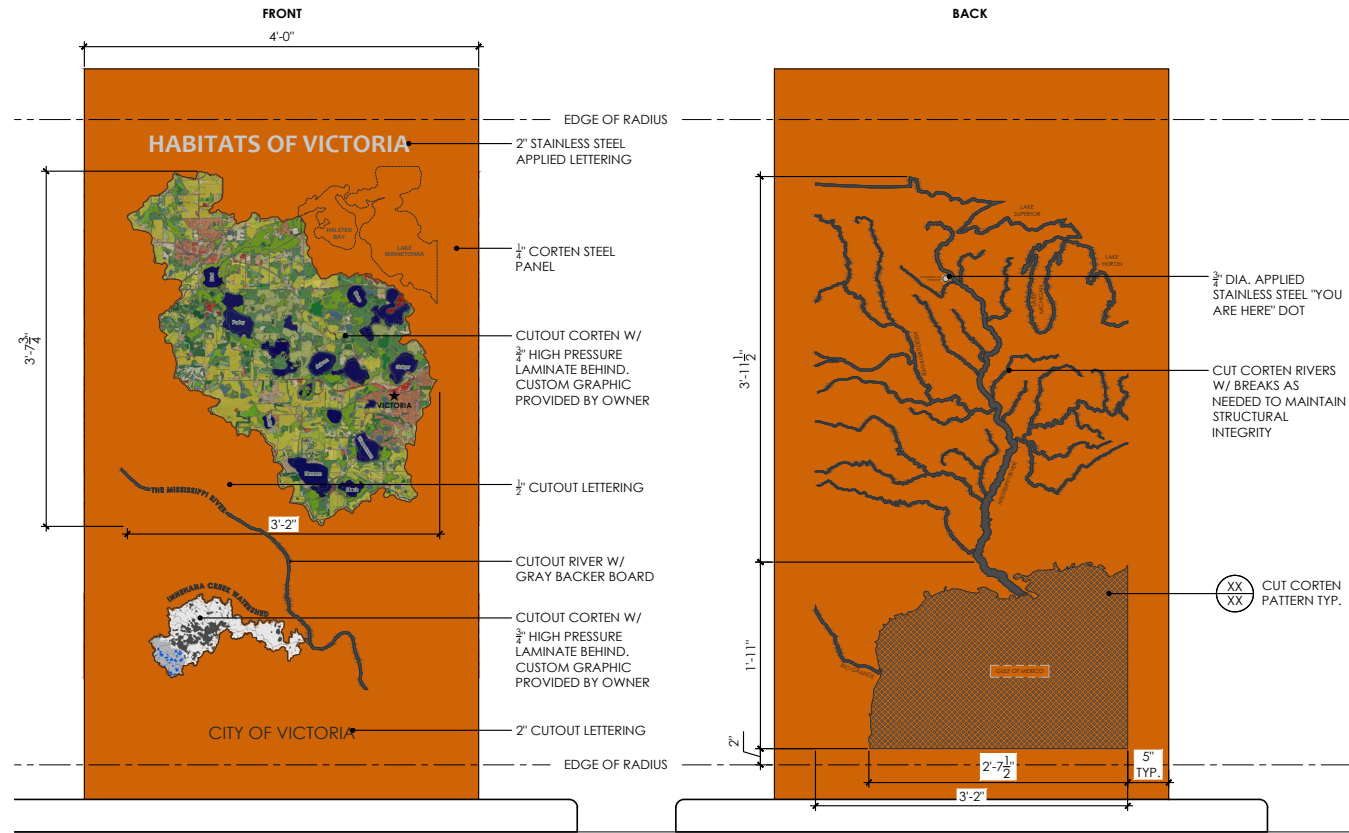
DRAWN BY:
 CHECKED BY:

L3.1

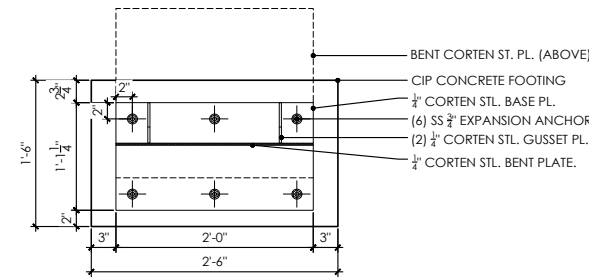


1 hub sign A
 Scale: 1" = 1'-0"

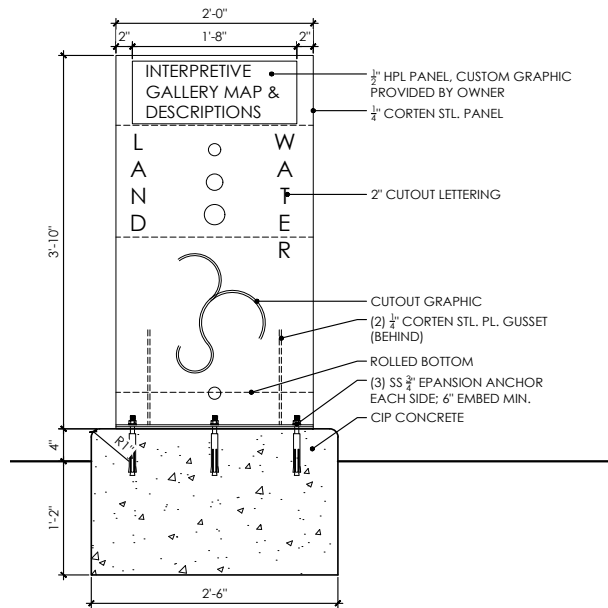
1 hub sign B
 Scale: 1" = 1'-0"



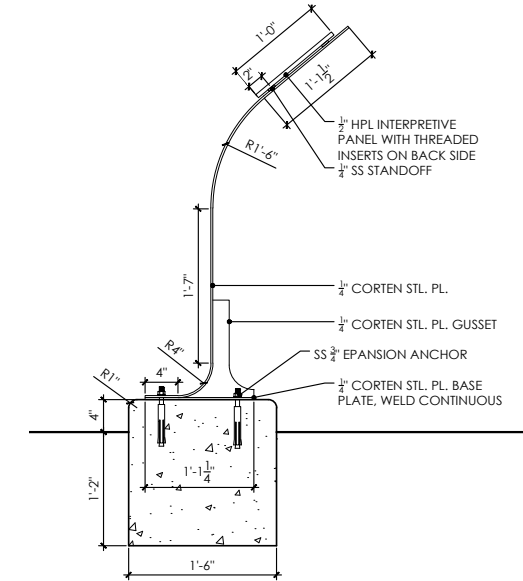
1 hub sign C
 Scale: 1" = 1'-0"



1 hub sign D - plan
 Scale: 1" = 1'-0"



1 hub sign D - elev.
 Scale: 1" = 1'-0"



1 hub sign D - section
 Scale: 1" = 1'-0"

client
MINNEHAHA CREEK WATERSHED DISTRICT

project
WASSERMANN LAKE PRESERVE - INTERPRETIVE ELEMENTS
 PID 650230600 & PID 650230700
 COUNTY ROAD 43
 VICTORIA, MN 55318

PROJECT NUMBER: 190006

certification

I HEREBY CERTIFY that this plan, specification or report was prepared by me or under my direct supervision and that I am a duly Licensed Professional Architect under the laws of the State of Minnesota.
PRELIMINARY NOT FOR CONSTRUCTION
 SIGNATURE: *[Signature]*
 TYPED OR PRINTED NAME: CARLOS JAMES FERNANDEZ
 DATE: xx/xx/xxxx REG. NO.: 45414

issue / revision

NO DATE ISSUE / REVISION

sheet title

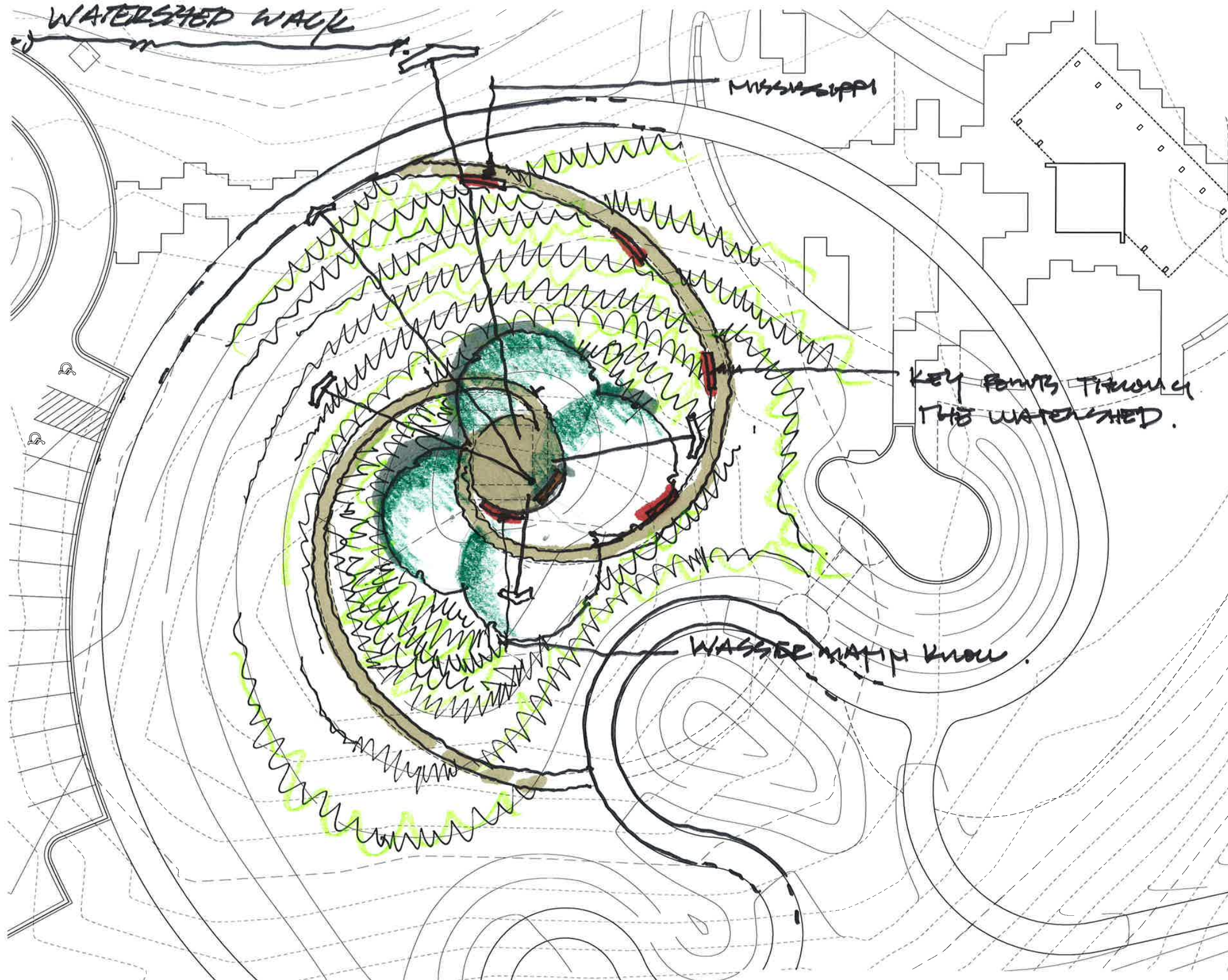
DETAILS

THIS SQUARE APPEARS 1/2" x 1/2" ON FULL SIZE SHEETS.

DRAWN BY:
 CHECKED BY:

L3.2

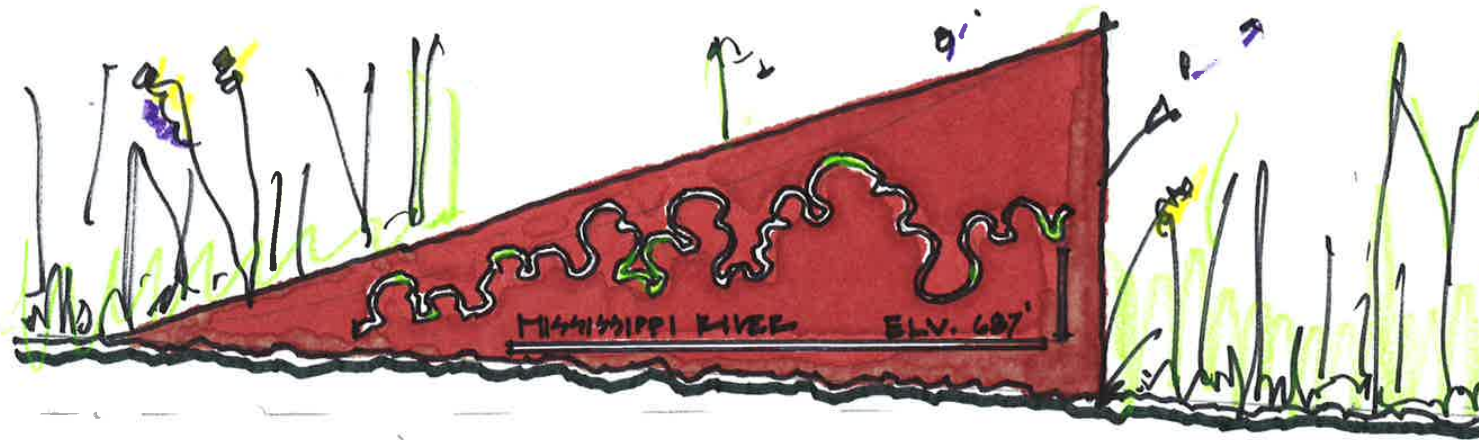
4. WATERSHED WALK PLAN



graphic features

- 4 corten panels tell the story of the watershed through key locations that define the character of the watershed
- placement reflects the path of water from the Wassermann Lake Preserve to the Mississippi River and beyond
- custom cut out graphics illustrate the narrative of each panel and the watershed as a whole

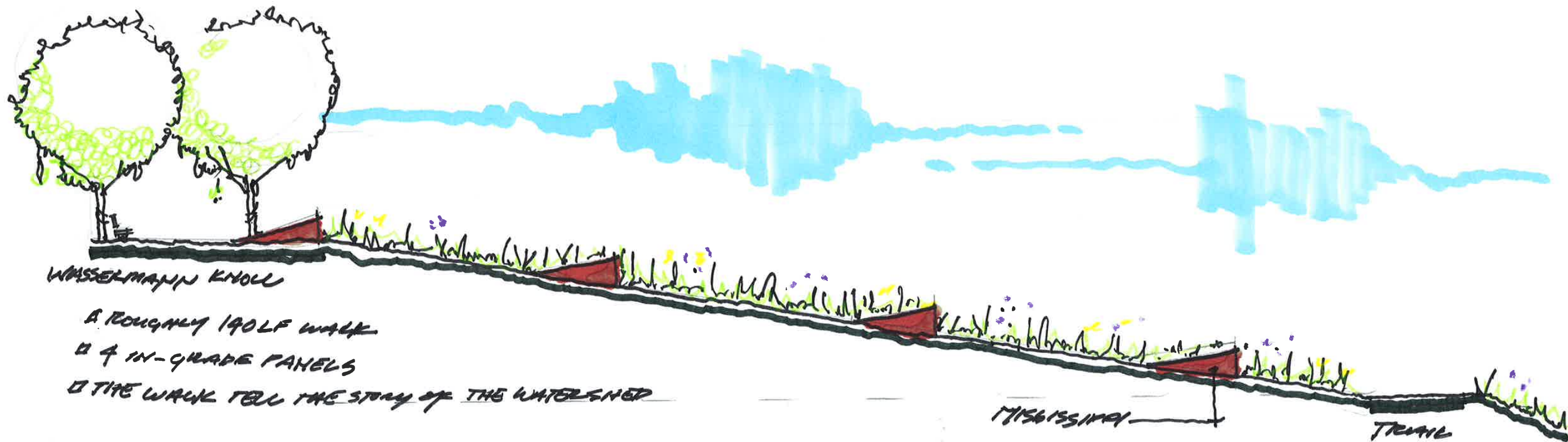
4. WATERSHED WALK PANELS



- WATERSHED WALK**
- WASSERMANN KNOLL 975.25'
 - WASSERMANN LAKE 945'
 - MINNETONKA (DAM) 930'
 - MINNETONKA FALLS ELEV. 810'
 - MISSISSIPPI R. ELEV. 687'

graphic features

- corten cutouts illustrate the form of the river at key moments along with their names and elevations



WASSERMANN KNOLL

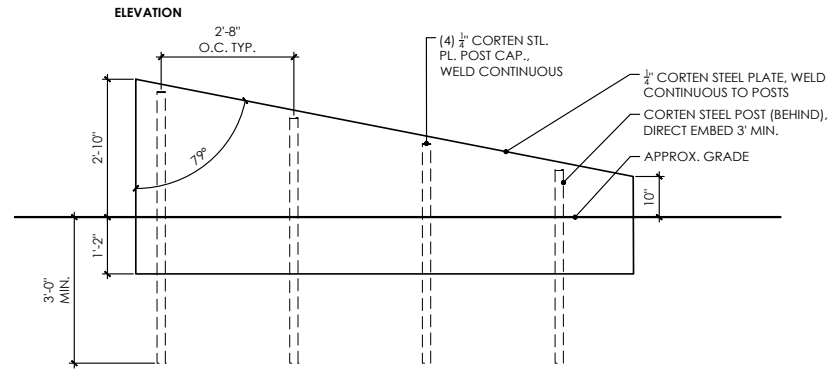
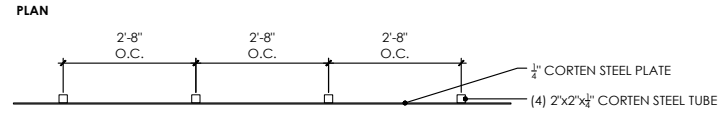
A ROUGHLY 190LF WALK

□ 4 IN-GRADE PANELS

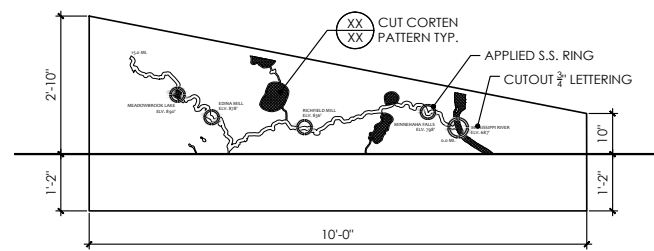
□ THE WALK TELL THE STORY OF THE WATERSHED

MISSISSIPPI

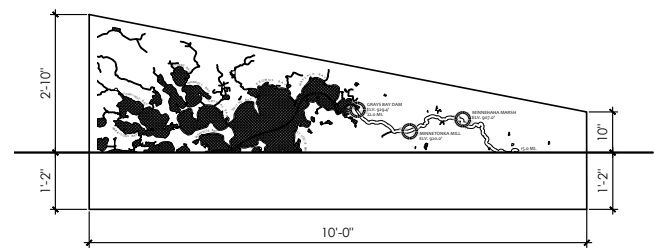
TRAIL



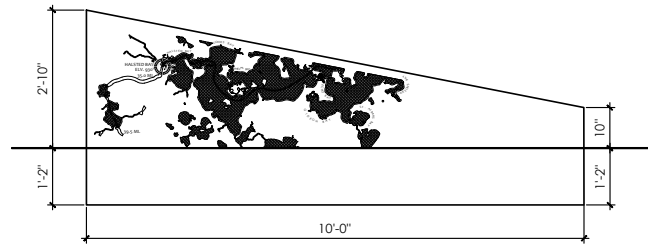
1 watershed walk typ,
 Scale: 1/2" = 1'-0"



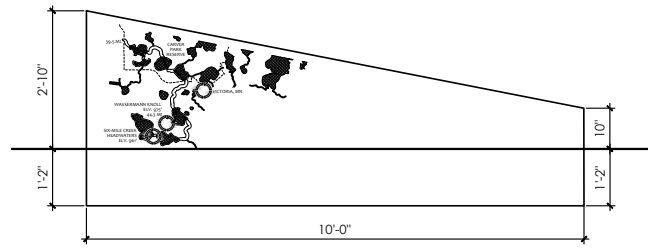
1 watershed walk - panel 1
 Scale: 1/2" = 1'-0"



1 watershed walk - panel 2
 Scale: 1/2" = 1'-0"



1 watershed walk - panel 3
 Scale: 1/2" = 1'-0"



1 watershed walk - panel 4
 Scale: 1/2" = 1'-0"

client
MINNEHAHA CREEK WATERSHED DISTRICT

project
WASSERMANN LAKE PRESERVE - INTERPRETIVE ELEMENTS
 PID 650230600 &
 PID 650230700
 COUNTY ROAD 43
 VICTORIA, MN 55318

PROJECT NUMBER: 190006

certification

I HEREBY CERTIFY that this plan, specification or report was prepared by me or under my direct supervision and that I am a duly Licensed Professional Architect under the laws of the State of Minnesota.
 SIGNATURE: *James Fernandez*
 TYPED OR PRINTED NAME: JAMES FERNANDEZ
 DATE: 02/10/2020 REG. NO.: 45414

PRELIMINARY NOT FOR CONSTRUCTION

issue / revision

NO	DATE	ISSUE / REVISION

sheet title
DETAILS

THIS SQUARE APPEARS 1/2" x 1/2" ON FULL SIZE SHEETS.

DRAWN BY:
 CHECKED BY:

L3.3

5. PRAIRIE TO FOREST PLAN

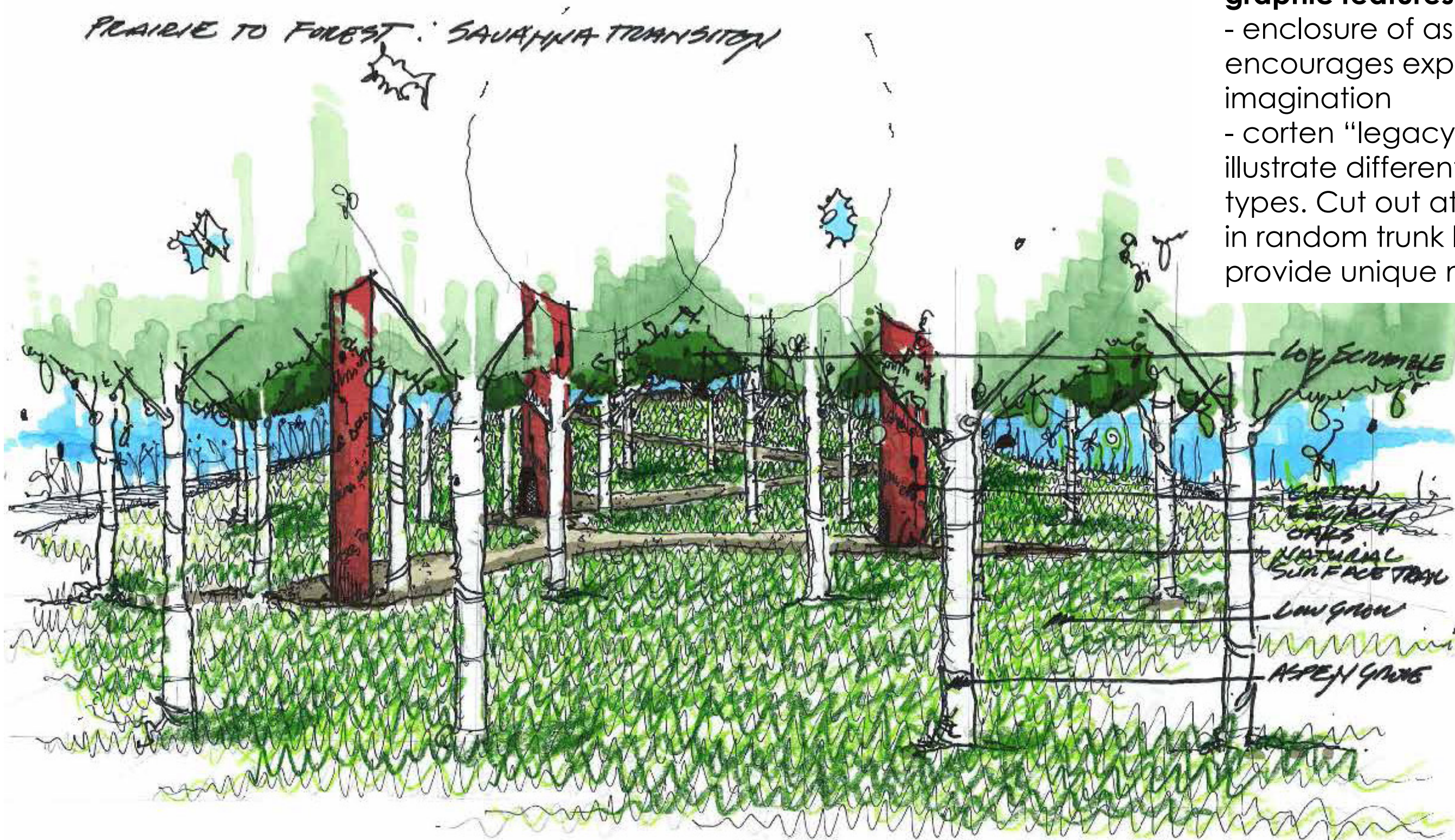
graphic features

- playful grove knitted into play
- spaces and key intersection of park paths- location highlights the transition of forest to prairie. A story of both time (early successional forest) as well as space (prairie edge to oak forest).
- aspens express the forest "edge"



5. PRAIRIE TO FOREST PLAY SPACE

PRAIRIE TO FOREST: SAVANNAH TRANSITION



graphic features

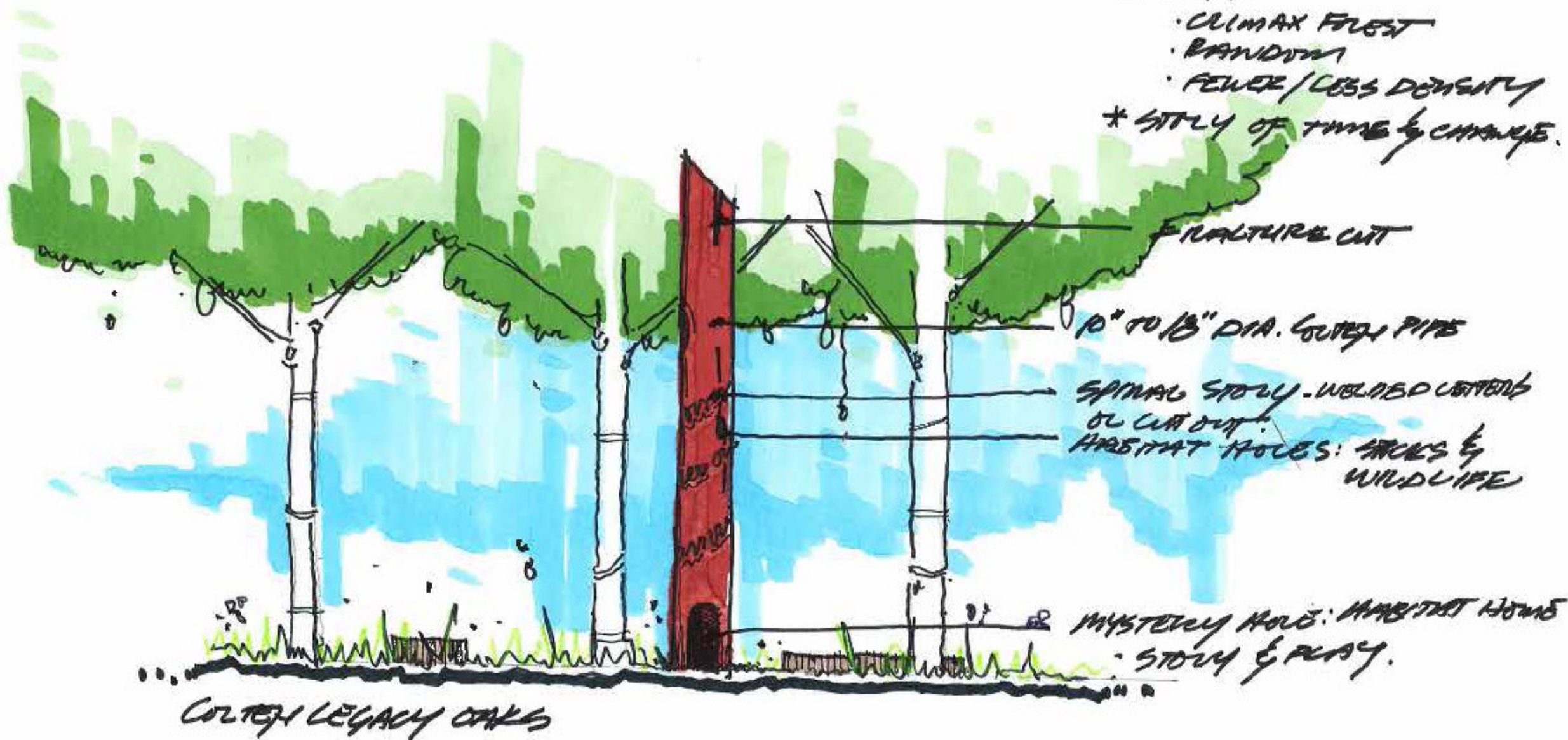
- enclosure of aspen grove encourages exploration and imagination
- corten "legacy oaks" illustrate different forest cover types. Cut out at bases & in random trunk locations provide unique messaging.

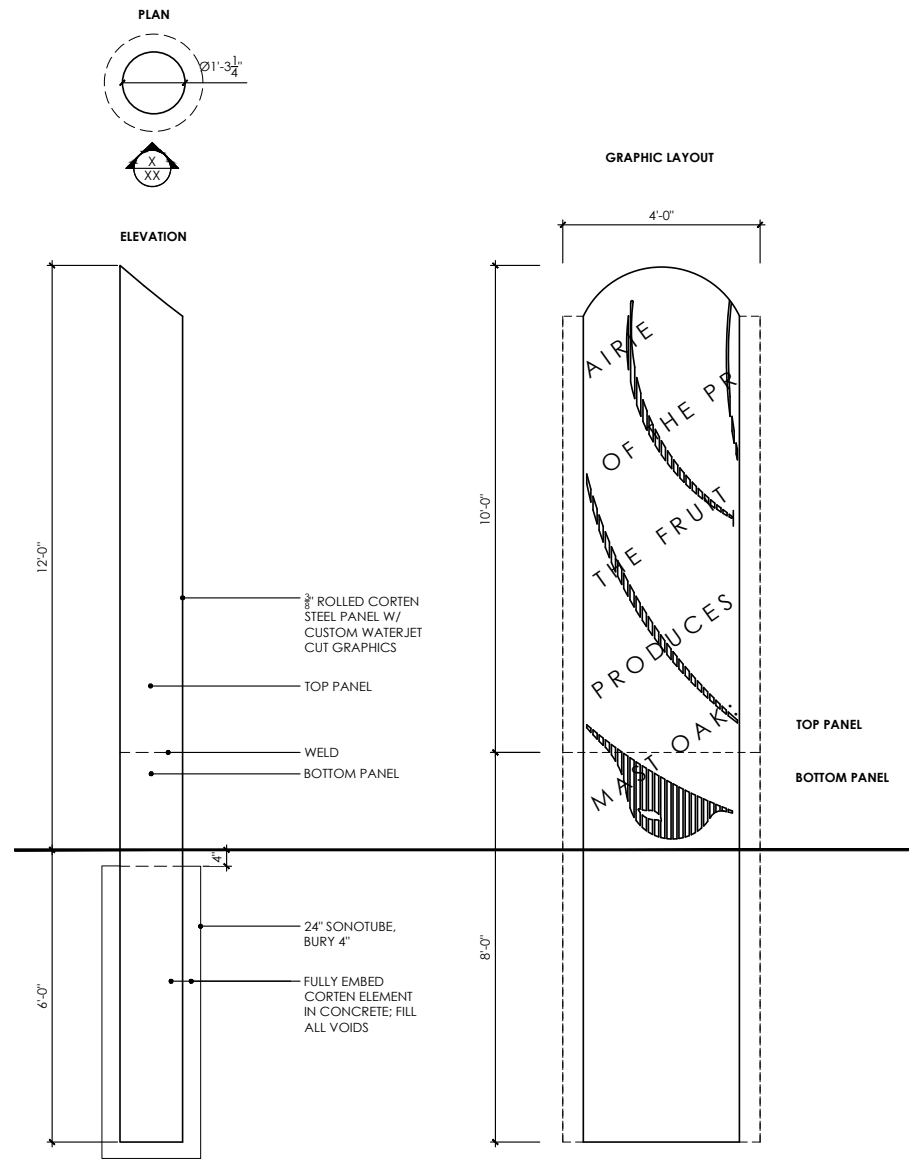
5. PRAIRIE TO FOREST OAKS AND ASPENS

graphic features

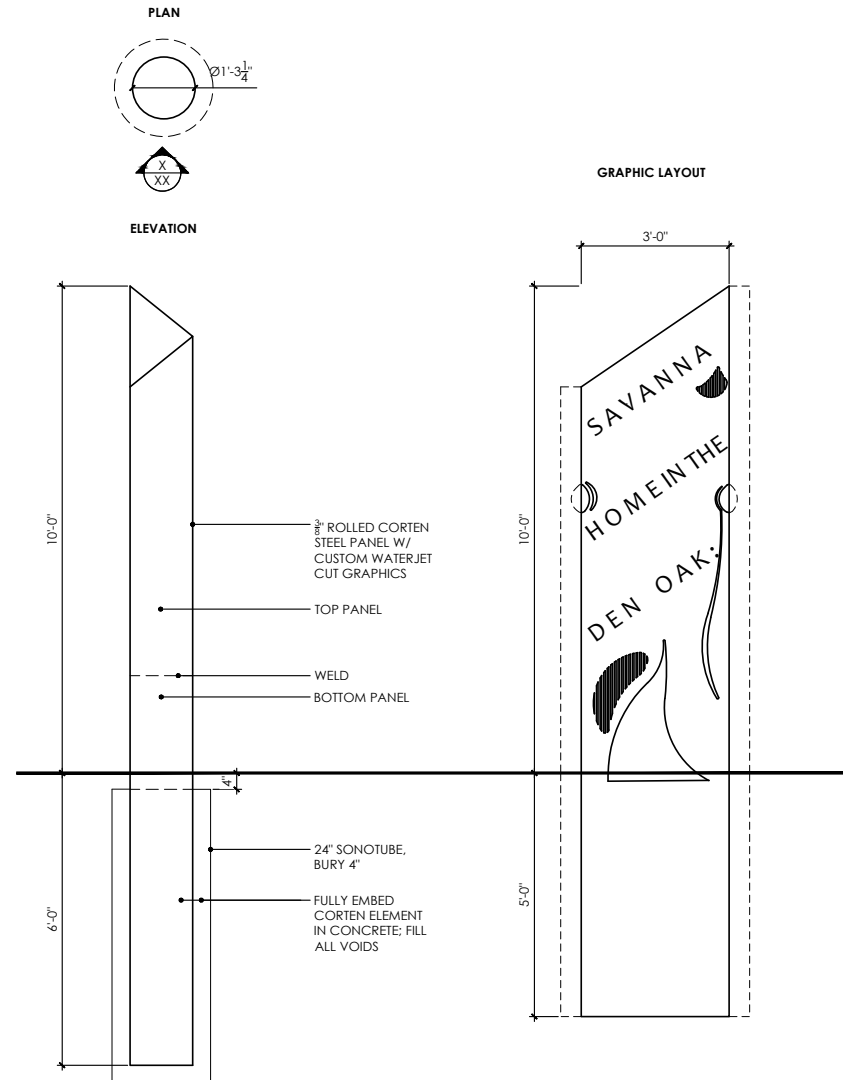
- merged "tree" cover types represent succession and transition of vegetation covers through both space and time.
- corten cut-outs in oak represent trees as habitat and are playful and encourage interaction.

PRAIRIE TO FOREST: SAVANNAH TRANSITION.
SPACE & TIME

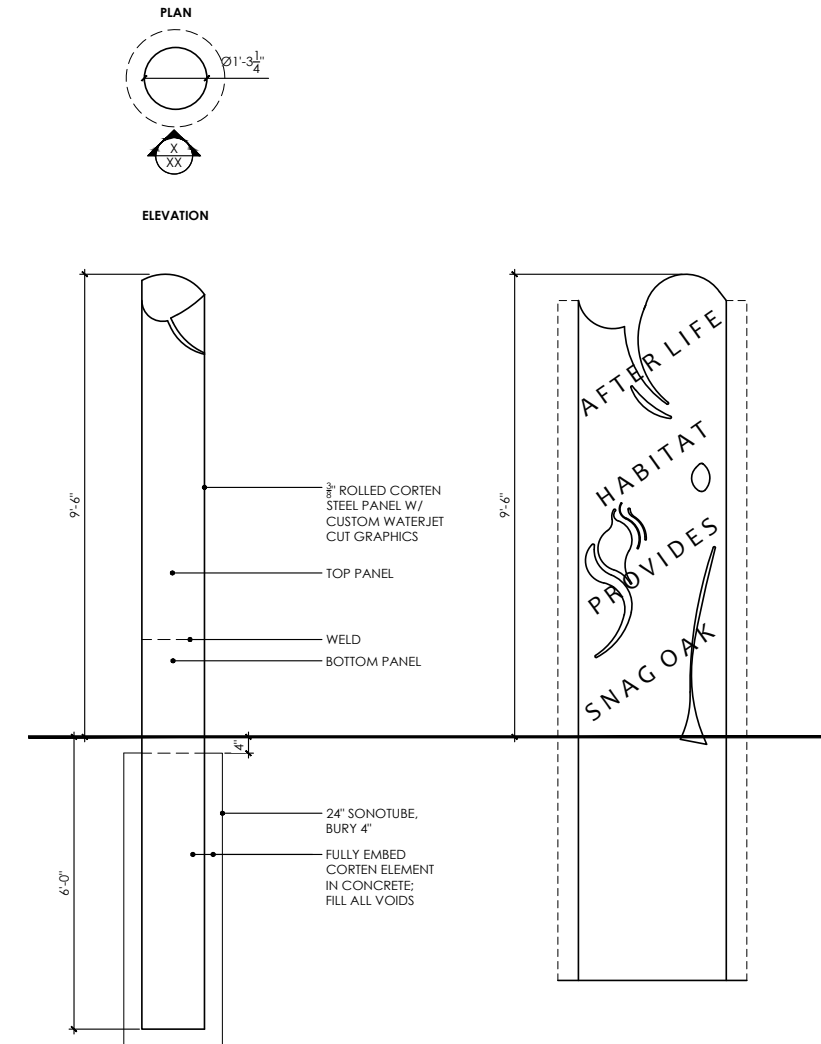




1 prairie transition - mast tree
 Scale: 1/2" = 1'-0"



1 prairie transition - den tree
 Scale: 1/2" = 1'-0"



1 prairie transition - snag tree
 Scale: 1/2" = 1'-0"

client
MINNEHAHA CREEK WATERSHED DISTRICT

project
WASSERMANN LAKE PRESERVE - INTERPRETIVE ELEMENTS
 PID 650230600 & PID 650230700
 COUNTY ROAD 43
 VICTORIA, MN 55318

PROJECT NUMBER: 190006

certification

I HEREBY CERTIFY that this plan, specification or report was prepared by me or under my direct supervision and that I am a duly Licensed Professional Architect under the laws of the State of Minnesota.

PRELIMINARY NOT FOR CONSTRUCTION
 SIGNATURE: *James Fernandez*
 TYPED OR PRINTED NAME: JAMES JAMES FERNANDEZ
 DATE: xx/xx/xxxx REG. NO.: 45414

issue / revision

NO DATE ISSUE / REVISION

sheet title

DETAILS

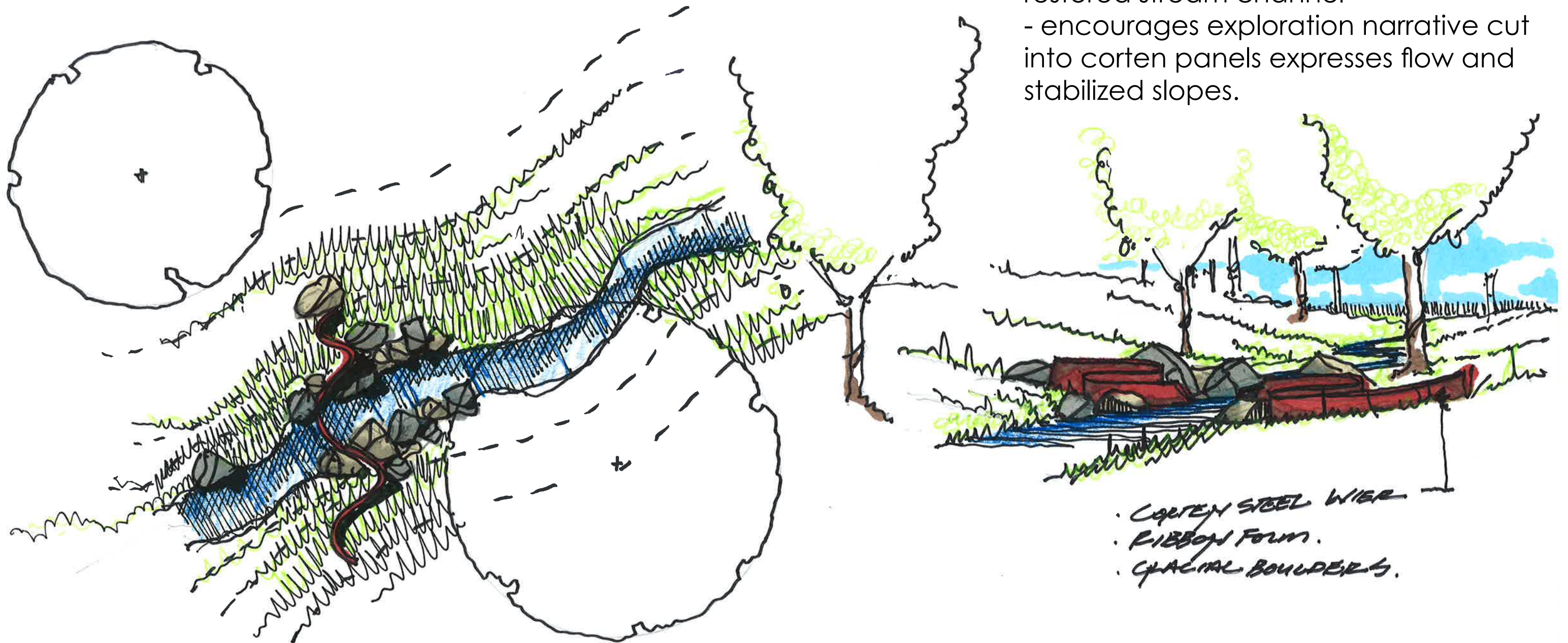
THIS SQUARE APPEARS 1/2" x 1/2" ON FULL SIZE SHEETS.

DRAWN BY:
 CHECKED BY:

L3.4

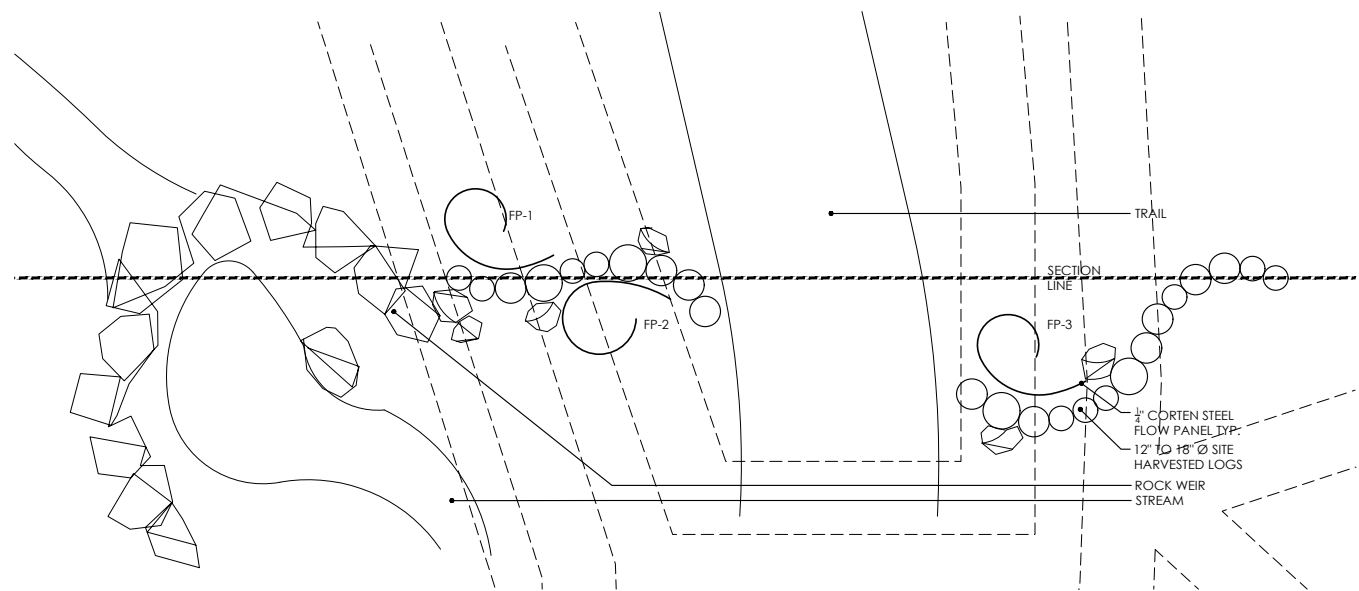
6. FLOW OF WATER STREAM

FLOW OF WATER

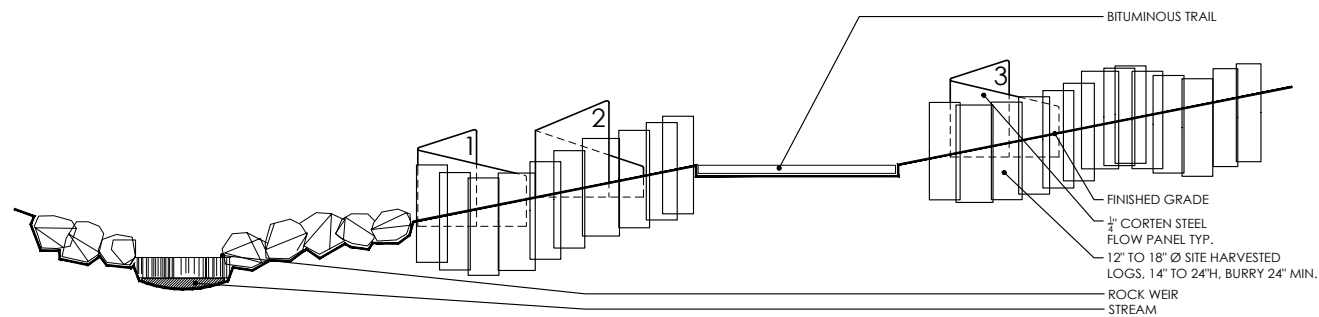


graphic features

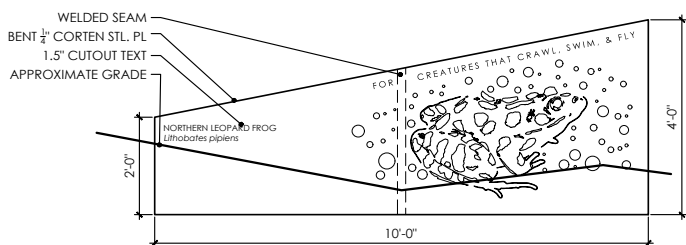
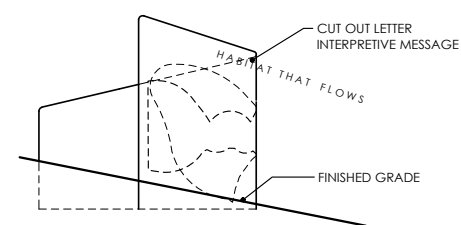
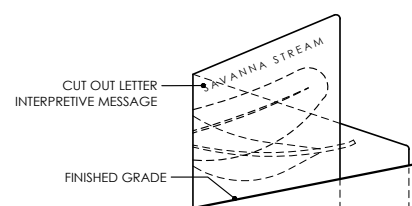
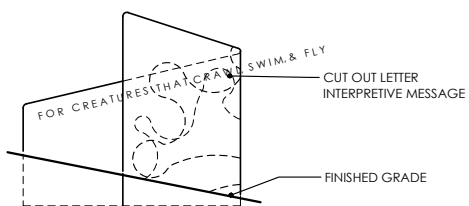
- corten "ribbon" illustrates the movement of water
- placement near slope of stream and rock weir highlights the function of the restored stream channel
- encourages exploration narrative cut into corten panels expresses flow and stabilized slopes.



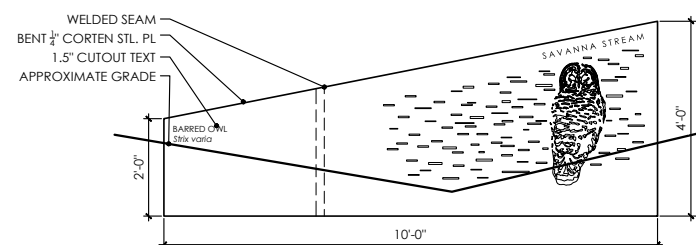
1 flow panels - plan
 Scale: 1/4" = 1'-0"



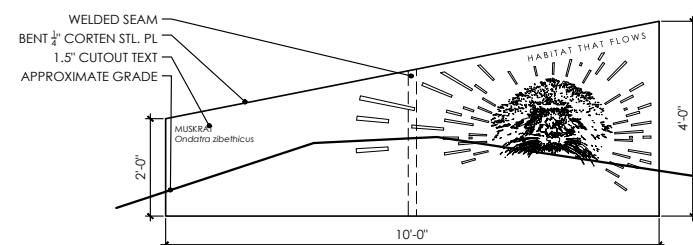
1 flow panels - section
 Scale: 1/4" = 1'-0"



1 flow panel 1
 Scale: 1/2" = 1'-0"



1 flow panel 2
 Scale: 1/2" = 1'-0"



1 flow panel 3
 Scale: 1/2" = 1'-0"

client

**MINNEHAHA CREEK
 WATERSHED DISTRICT**

project

**WASSERMANN LAKE
 PRESERVE -
 INTERPRETIVE ELEMENTS**

PID 650230600 &
 PID 650230700
 COUNTY ROAD 43
 VICTORIA, MN 55318

PROJECT NUMBER: 190006

certification

I HEREBY CERTIFY that this plan, specification or report was prepared by me or under my direct supervision and that I am a duly Licensed Professional Architect under the laws of the State of Minnesota.
 SIGNATURE: *James Fernandez*
 TYPED OR PRINTED NAME: JAMES JAMES FERNANDEZ
 DATE: 01/11/2020 REG. NO.: 45414

issue / revision

NO	DATE	ISSUE / REVISION

sheet title

DETAILS

THIS SQUARE APPEARS 1/2" x 1/2" ON FULL SIZE SHEETS.

DRAWN BY:
 CHECKED BY:

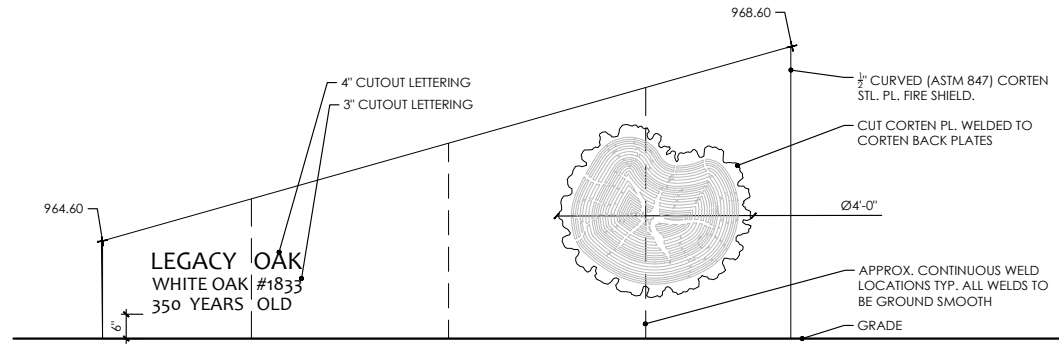
L3.5

7. LEGACY OAK FIRE RING

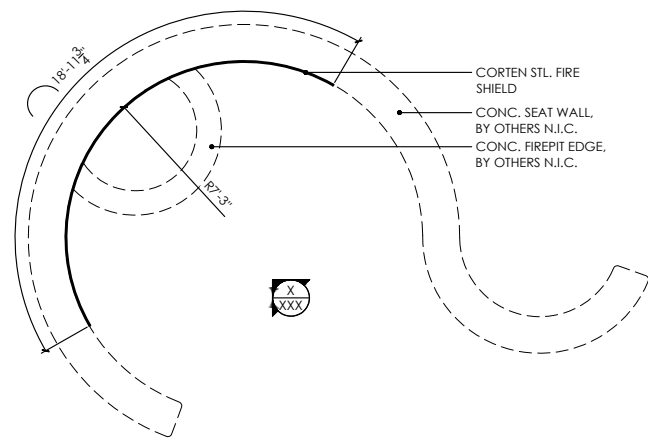
graphic features

- corten overlay represents the cross-cut section of one of the park's largest legacy oaks (still standing)
- text expresses species, tree tag # and age of tree





1 legacy oak - fire shield
 Scale: 1/2" = 1'-0"



1 legacy oak - fire shield
 Scale: 1/4" = 1'-0"

client
**MINNEHAHA CREEK
 WATERSHED DISTRICT**

project
**WASSERMANN LAKE
 PRESERVE -
 INTERPRETIVE ELEMENTS**
 PID 650230600 &
 PID 650230700
 COUNTY ROAD 43
 VICTORIA, MN 55318

PROJECT NUMBER: 190006

certification

I HEREBY CERTIFY that this plan, specification or report was prepared by me or under my direct supervision and that I am a duly Licensed Professional Architect under the laws of the State of Minnesota.
 SIGNATURE: *[Signature]*
 TYPED OR PRINTED NAME: CARLOS JAMES FERNANDEZ
 DATE: xx/xx/xxxx REG. NO.: 45414

issue / revision

NO	DATE	ISSUE / REVISION

sheet title

DETAILS

THIS SQUARE APPEARS 1/2" x 1/2" ON FULL SIZE SHEETS.

DRAWN BY:
 CHECKED BY:

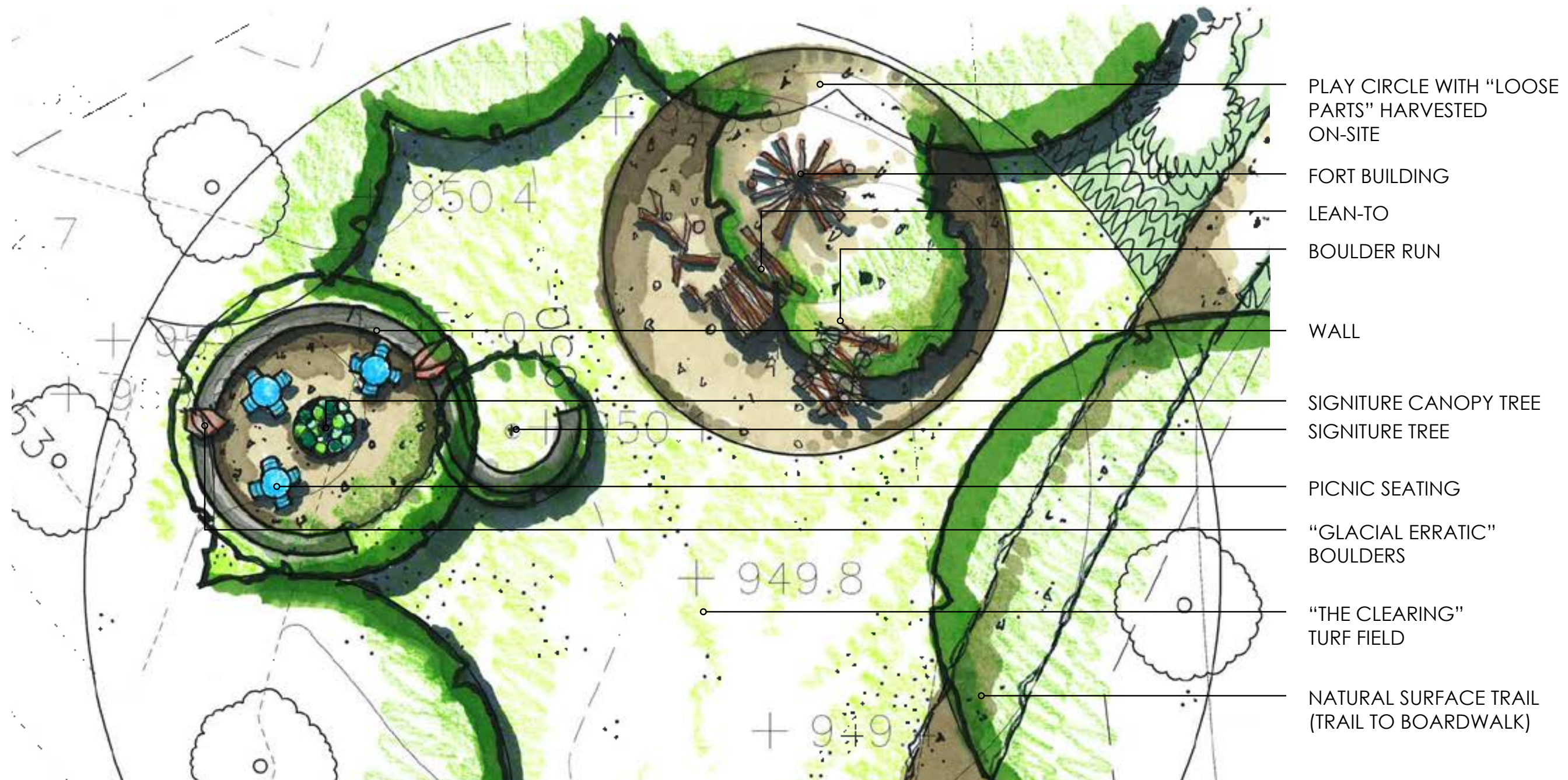
L3.6

8. WAVE SEAT WALLS CLEARING SPACE & FIRE RING

graphic features

- similar to the wave bench, this form reflects the flow of water or the movement of an oak root lifting from forest floor
- opportunities for integrativing direct interpretation on to concrete form

CLEARING GATHERING SPACE

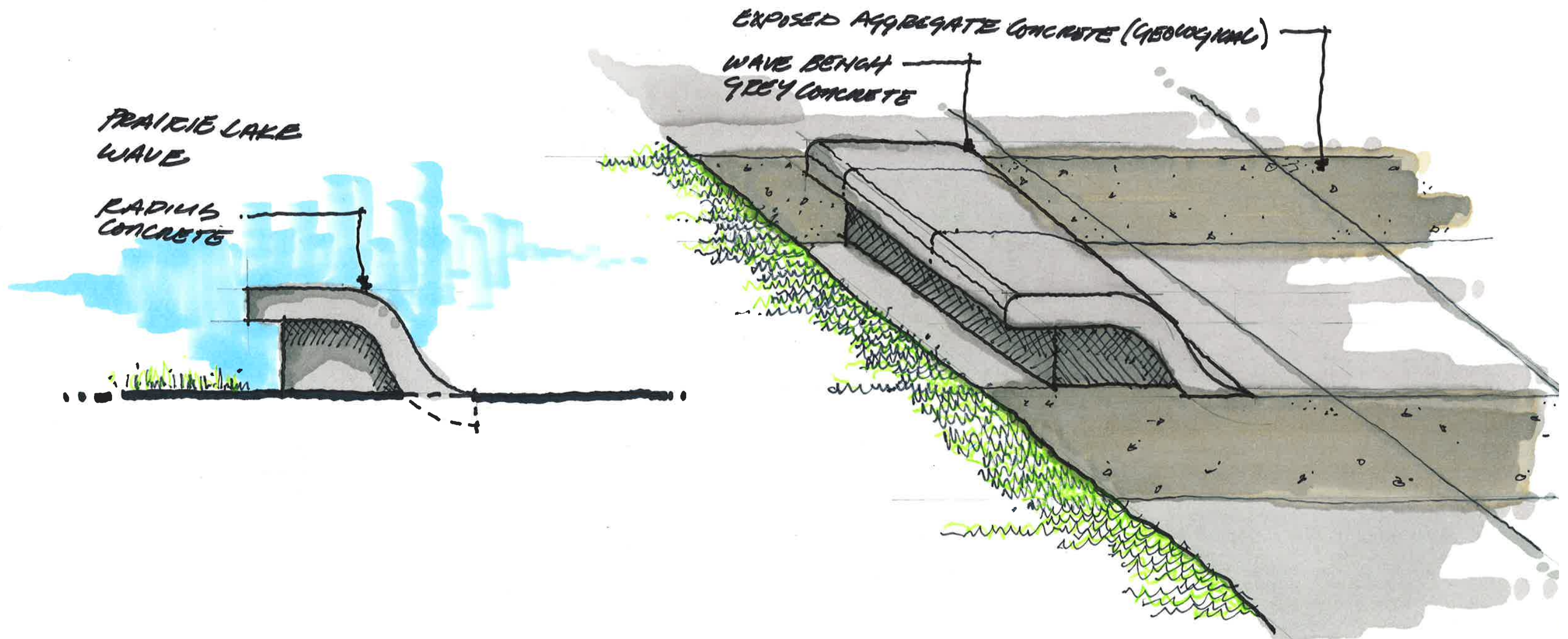


9. WAVE BENCH & EXPOSED AGGREGATE CONCRETE SHELTER PLAZA

WAVE BENCH

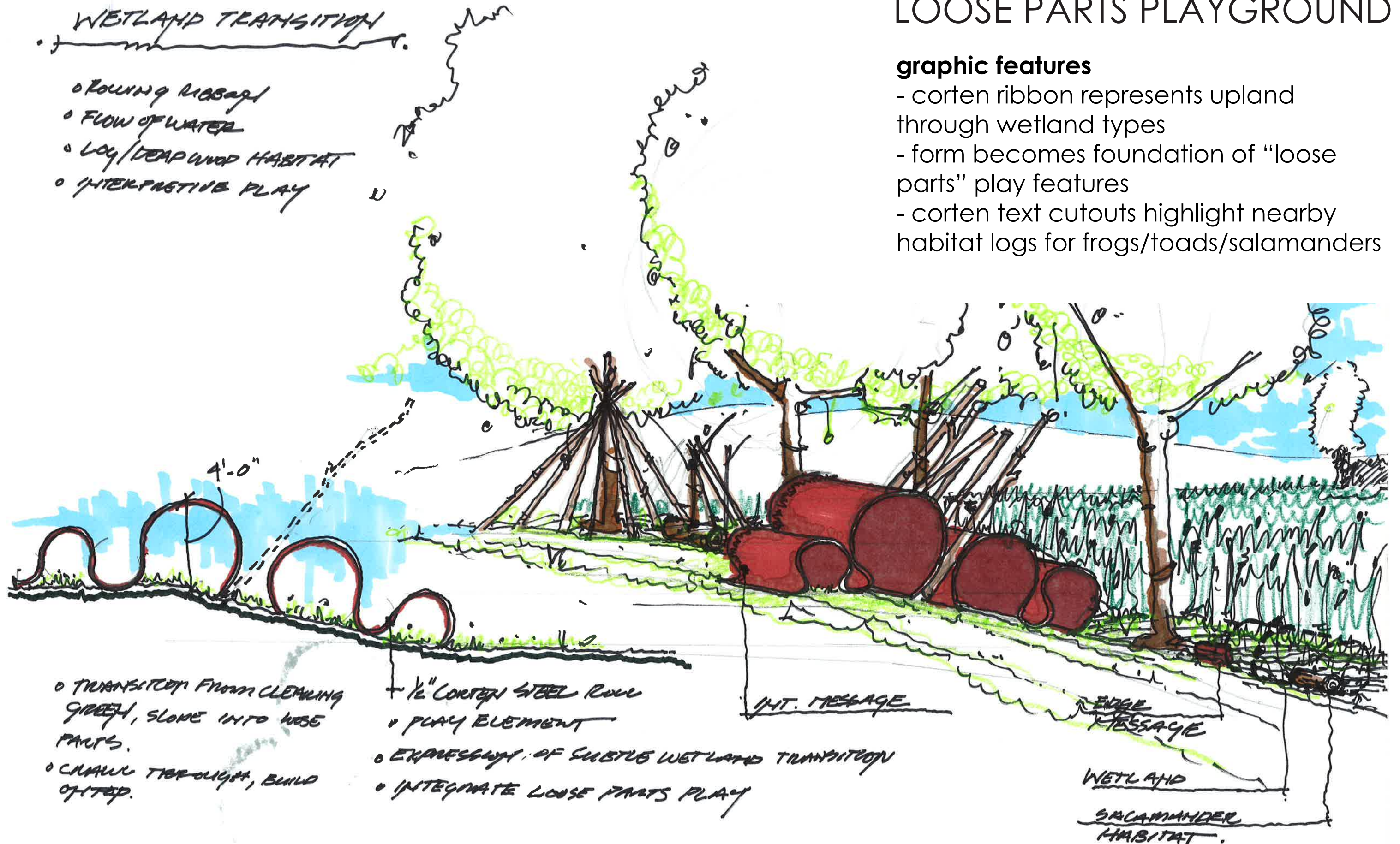
graphic features

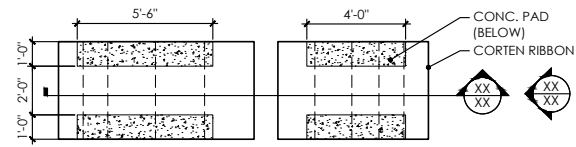
- bench form reflects movement of water and interactions with river and lake beds
- exposed aggregate concrete recalls glacial impact of landscape



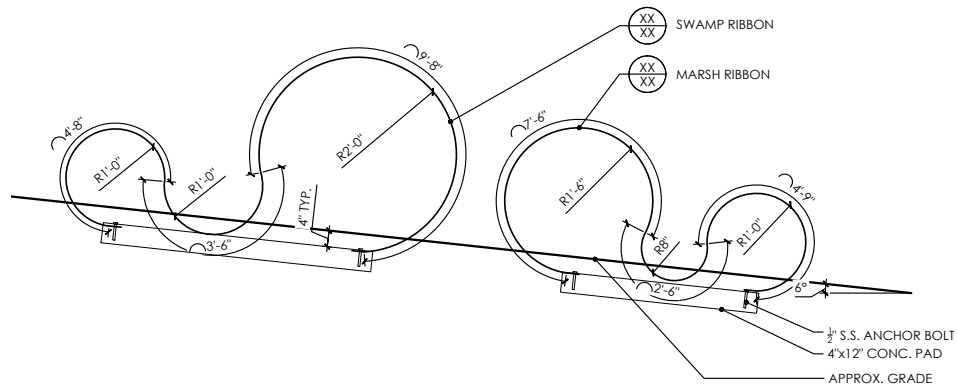


10. WETLAND TRANSITION LOOSE PARTS PLAYGROUND

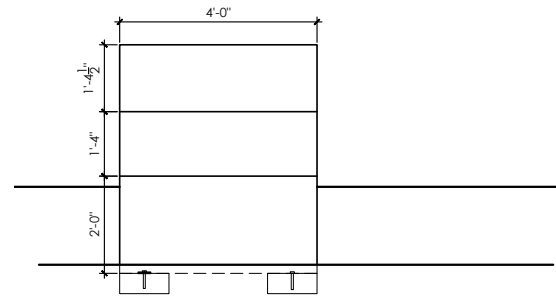




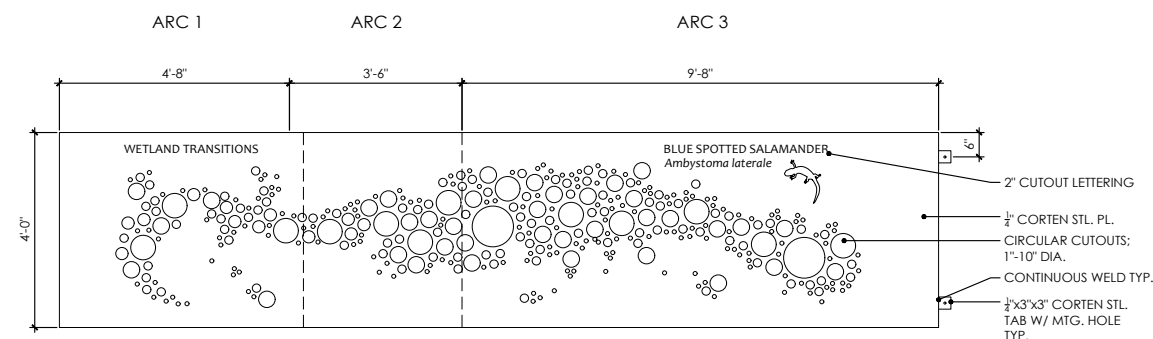
1 wetland ribbons - plan
 Scale: 1/4" = 1'-0"



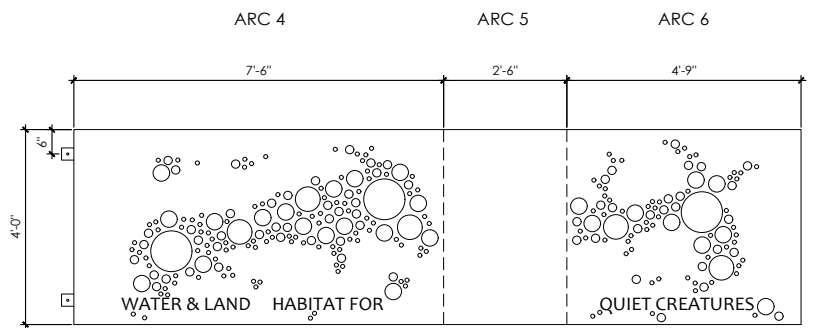
1 wetland ribbons - section
 Scale: 1/2" = 1'-0"



1 wetland ribbons elev.
 Scale: 1/2" = 1'-0"



1 swamp ribbon
 Scale: 1/2" = 1'-0"



1 marsh ribbon
 Scale: 1/2" = 1'-0"

client

MINNEHAHA CREEK WATERSHED DISTRICT

project

WASSERMANN LAKE PRESERVE - INTERPRETIVE ELEMENTS

PID 650230600 &
 PID 650230700
 COUNTY ROAD 43
 VICTORIA, MN 55318

PROJECT NUMBER: 190006

certification

I HEREBY CERTIFY that this plan, specification or report was prepared by me or under my direct supervision and that I am a duly licensed Professional Architect under the laws of the State of Minnesota.
 SIGNATURE: *James Fernandez*
 TYPED OR PRINTED NAME: JAMES JAMES FERNANDEZ
 DATE: xx/xx/xx REG. NO.: 45414

issue / revision

NO	DATE	ISSUE / REVISION

sheet title

DETAILS

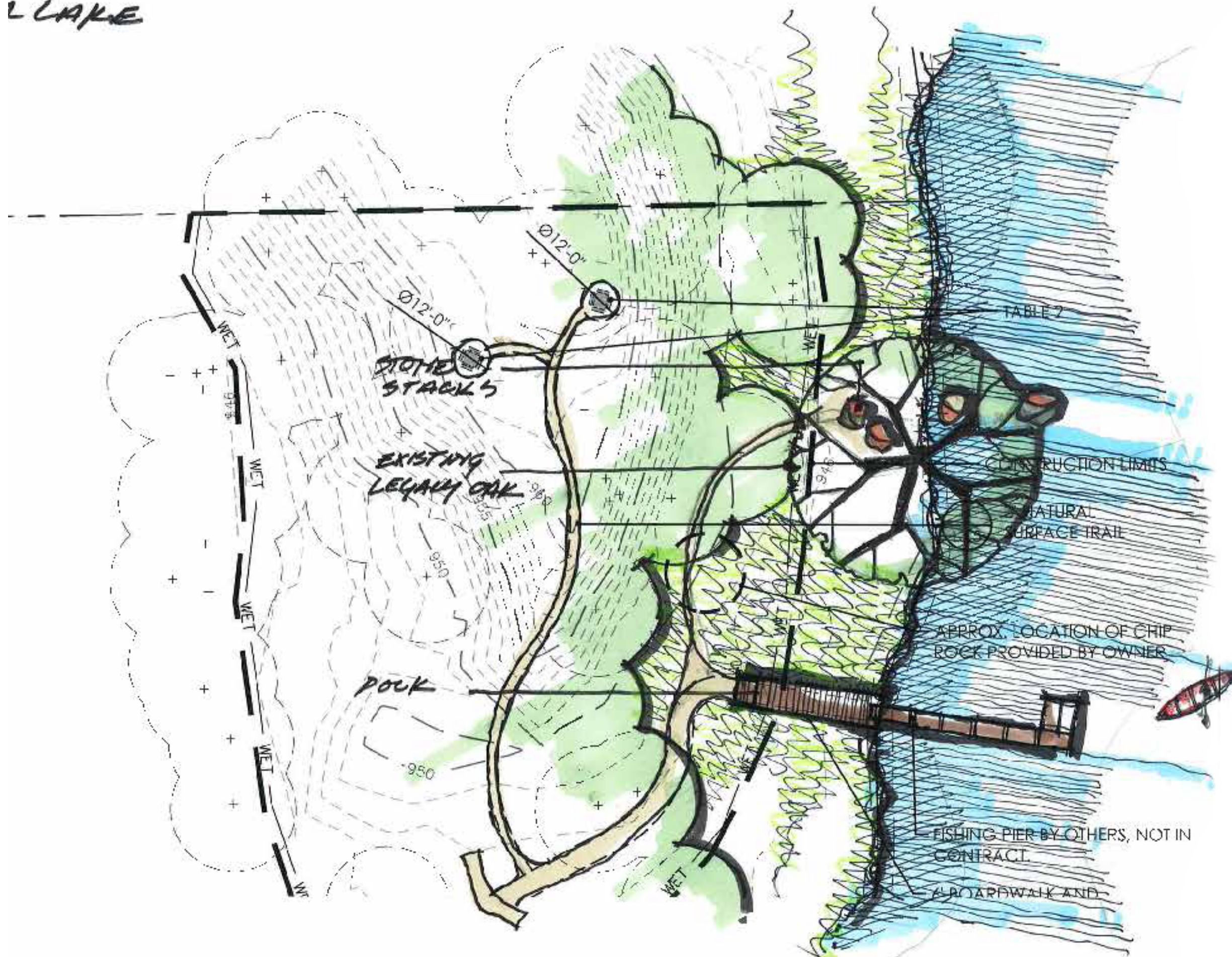
THIS SQUARE APPEARS 1/2" x 1/2" ON FULL SIZE SHEETS.

DRAWN BY:
 CHECKED BY:

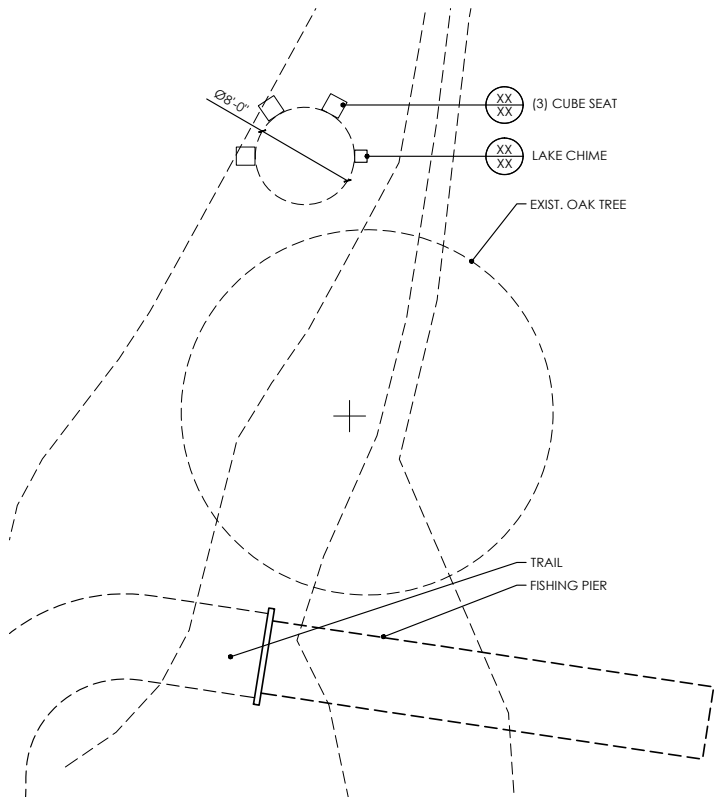
L3.7

L LAKE

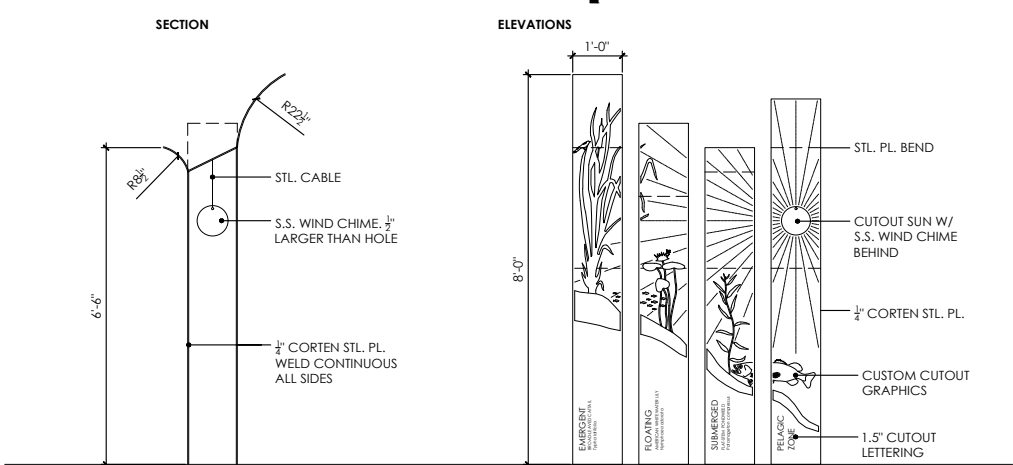
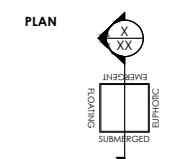
11. LAKE CHIME PLAN



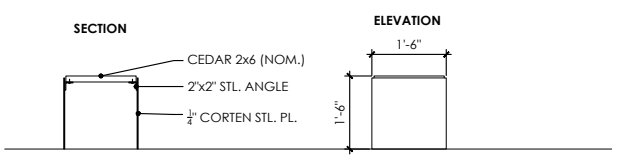
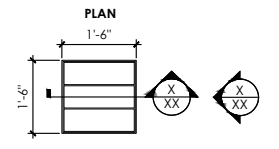
- graphic features**
- located at the end of the park walking loop, 3 corten cubes create a small seating grove on the edge of the lake and under the canopy of a legacy oak
 - corten chimney depicts the distinct vegetation types found in the lake shore littoral zone and their importance to supporting aquatic and terrestrial wildlife.
 - wind chime sound encourages off-trail exploration on the island



1 lake chime - plan
 Scale: 1/8" = 1'-0"



1 lake chime
 Scale: 1/2" = 1'-0"



1 cube seat
 Scale: 1/2" = 1'-0"

client

MINNEHAHA CREEK WATERSHED DISTRICT

project

WASSERMANN LAKE PRESERVE - INTERPRETIVE ELEMENTS

PID 650230600 &
 PID 650230700
 COUNTY ROAD 43
 VICTORIA, MN 55318

PROJECT NUMBER: 190006

certification

I HEREBY CERTIFY that this plan, specification or report was prepared by me or under my direct supervision and that I am a duly Licensed Professional Architect under the laws of the State of Minnesota.

PRELIMINARY NOT FOR CONSTRUCTION

SIGNATURE: *[Signature]*

TYPED OR PRINTED NAME: CARLOS JAMES FERNANDEZ

DATE: 02/14/2020 REG. NO.: 45414

issue / revision

NO	DATE	ISSUE / REVISION

sheet title

DETAILS

THIS SQUARE APPEARS 1/2" x 1/2" ON FULL SIZE SHEETS.

DRAWN BY:
 CHECKED BY:

L3.8