



Title: Approval to Award Contract for Wassermann Lake Preserve Interpretive Signage Fabrication and Installation

Resolution number: 20-060

Prepared by: Name: Anna Brown
Phone: (952) 641-4522
abrown@minnehahacreek.org

Reviewed by: Name/Title: Michael Hayman/Project Planning Manager

Recommended action: Approve the contract for installation and fabrication of the hub signage by 4th Dimension Signs, approve the contract for fabrication of the interpretive elements by 4th Dimension Signs, and approve a change order for installation of the interpretive elements by LinnCo.

Schedule: Fall 2020: Interpretive signage fabrication and installation

Budget considerations: Fund name and code: Wassermann Lake Preserve 300-3139
Fund budget: \$90,000 (2021 draft budget for interpretive elements)*
Expenditures to date: N/A
Requested amount of funding: \$124,500 (\$118,500 in contract costs and \$6,000 contingency)**

*The interpretive work is budgeted for in 2021, however, to facilitate timely implementation, staff is recommending an interim inter-fund loan. Furthermore, any project cost savings from 2020 construction will be applied towards the interpretive work.

**Incorporating design costs and the City's contribution, this contract award will require an addition of \$11,000 to the 2021 draft budget.

Past Board action: Res # 20-027 Contract award for Wassermann Lake Preserve Interpretive Design
Res # 20-053 Approval of Interpretive Plan and Authorization to Solicit Quotes

Summary:

Since 2017, the Minnehaha Creek Watershed District and City of Victoria have been working in partnership to jointly develop a park and natural resource restoration project on an undeveloped parcel on the western shoreline of Lake Wassermann. The project includes woodland, prairie and wetland habitat restoration, nature-based play features, a shelter with four-season restrooms, a fishing pier, and trails and boardwalk, amongst other amenities.

Site interpretation will be an important element of the overall Wassermann Lake Preserve plan and will help define the user experience. Wassermann Lake Preserve will be a flagship project in the integrated implementation approach to which MCWD is committed in its pursuit of high impact capital projects that create meaningful progress towards water quality and ecological integrity in the subwatershed. The interpretive planning effort presents an opportunity to not only define unique natural elements of the site, but also to contextualize the site in the broader context of our work in the Six Mile Creek-Halsted Bay Subwatershed.

At the April 9, 2020 Operations and Programs Committee (OPC) meeting, staff presented the recommended interpretive approach for the Wassermann Lake Preserve project. The proposal presented a unique approach to interpretation, which includes a central signage hub with more traditional signage elements (the hub), and more artful, abstract interpretive elements at other key locations in the preserve (the interpretive elements). After reviewing the preliminary design and the opinion of probable cost for fabrication and installation of the interpretive proposal, the MCWD Board of Managers approved the design scope with Aune Fernandez Landscape Architects (AFLA) to carry the proposal through final design and bidding.

At the June 23, 2020 Board meeting, the Board approved the final interpretive design proposal and authorized staff to solicit quotes for fabrication and installation. The opinion of probable cost for fabrication and installation was \$107,500. The cost estimate for fabrication and installation excluded one interpretive element, the prairie transition/three oaks, as the Board and staff agreed this element would only proceed if other elements came in under budget. The cost estimate included \$33,150 for the entrance monument and hub signs, and \$74,350 for the interpretive elements. Including an estimated \$18,500 for design, the total estimated cost for all interpretive work was \$126,000, with \$36,000 coming from the City and the remaining \$90,000 coming from MCWD.

Quote Solicitation and Response

On July 2, 2020, staff and ALFA released a request for quotes to five vendors as well as from LinnCo, the park contractor. Quotes were solicited in three separate packages, Projects A, B and Installation:

- Project A included fabrication and installation of the hub signs and entry sign and was solicited as a lump-sum request;
- Project B included fabrication and installation for the six interpretive elements and the locator sign. Quotes were solicited on a per item basis, with separate costs requested for fabrication and installation, to facilitate an “a la carte” award. In particular, staff wanted to maintain flexibility to have LinnCo perform the installation work as a change order to the park project if that proved the most cost-effective means of installation, as well as the ability to eliminate interpretive elements if costs exceeded budgeted expenses;
- Finally, a proposal request (Installation) was submitted to LinnCo requesting pricing for them to complete installation of the interpretive elements as a change order to the park project.

We received quotes from two vendors, JK Properties, Inc. and 4th Dimension Signs for projects A and B, as well as the proposal request from LinnCo for installation. JK Properties, Inc. was only able to offer whole-project lump sum, so their quote was not workable for Project B. The quotes submittals broke down as follows:

	JK Properties, Inc.	4 th Dimension Signs	LinnCo
Project A	\$54,000	\$48,155	N/A
Project B	\$126,000	\$113,430	N/A
<i>Fabrication</i>	N/A	\$80,475	N/A
<i>Installation</i>	N/A	\$32,955	\$19,437

In addition to the above contract costs, there is a cost of \$23,760 of site work associated with the installation of interpretive signage that would be an addition to any contract award. A detailed quote tabulation has been distributed to the MCWD Board of Managers prior to the July 23, 2020 meeting and will be publicly available by request following contract award.

In total, the most cost advantageous approach is a hybrid model that contracts with 4th Dimension for Project A in its entirety and also contracts with 4th Dimension for installation and fabrication of the locator panel in Project B and for fabrication only of all other elements in Project B. The remaining installation of all other elements in Project B would be completed by LinnCo via a change order to the construction contract.

If the contract were awarded for all elements as quoted, the total cost would be \$171,375, which would exceed the opinion of probable cost and the project budget. Staff are therefore recommending eliminating the flow panel interpretive element located adjacent to the stream channel, and the three oaks/prairie transition interpretive elements located adjacent to the nature play area. With these items eliminated, the total project cost is \$124,500, including a

recommended 5% contingency (\$6,000). Incorporating design cost savings into the overall project budget, this would bring the total MCWD budget for design, fabrication, and installation to \$101,000, including contingency, an increase of \$11,000 to the project budget.

In summary, at the July 23, 2020 Board meeting, staff are recommending the following contract awards for fabrication and installation of the Wassermann Lake Preserve Interpretive Proposal:

- Award the contract for Project A, fabrication and installation of the hub signs and entry sign, to 4th Dimension for an amount not to exceed \$48,155.
- Award the contract for fabrication and installation of the locator sign, and fabrication only of the watershed walk, the fire pit oak panel, the wetland ribbons, and the lake chime, to 4th Dimension for an amount not to exceed \$50,300.
- Approve a change order to the Wassermann Lake Preserve project contract with LinnCo for an amount not to exceed \$20,045 for installation of the watershed walk, wetland ribbon and lake chime (note the installation of the fire pit oak panel is already in the construction contract).
- Establish a fabrication and installation budget of \$124,500, including a \$6,000 contingency.

Supporting documents:

- Wassermann Lake Preserve Interpretive Program Proposal
- The quote tabulation has been distributed in advance to MCWD Board Managers and will be publicly available by request following the contract award



RESOLUTION

Resolution number: 20-060

Title: Approval to Award Contract for Wassermann Lake Preserve Interpretive Signage Fabrication and Installation

- WHEREAS the Minnehaha Creek Watershed District (MCWD) and City of Victoria (City) identified the Wassermann West property (the Property) as an opportunity for coordinated project development to meet strategic goals of both the MCWD and City by improving lake water quality, protecting and enhancing riparian wetland and shoreline, and affording public access to Wassermann Lake, among other potential project benefits;
- WHEREAS on May 11, 2017, the MCWD Board of Managers authorized the execution of a cooperative agreement with the City that provided for the development of preliminary plans for public natural resource restoration and recreational improvements for the Wassermann Lake Preserve Project (Project);
- WHEREAS on May 23, 2019, the MCWD Board of Managers approved the second cooperative agreement, identifying shared responsibilities in carrying the Project through final design and construction, and authorizing staff to prepare a design and construction oversight scope for Board review and approval;
- WHEREAS on December 9, 2019, the City Council approved 90% design for the Project with a construction cost estimate of \$2,375,970, and established a not to exceed construction budget of \$2.63 million;
- WHEREAS on December 19, 2019, the MCWD Board of Managers approved 90% design for the Project, and authorized staff to solicit bids for Project construction;
- WHEREAS on February 13, 2020, the MCWD Board of Managers awarded a construction contract to LinnCo, Inc. to implement the Wassermann Lake Preserve site improvements;
- WHEREAS site interpretation is an important component of the Project master plan, providing public education on the unique natural features of the site and the value of this work in the context of the SMCHB Subwatershed and Minnehaha Creek Watershed, while also activating the site to enhance the public's experience of its amenities;
- WHEREAS on April 9, 2020, the MCWD Board of Managers approved a contract with AFLA to carry the preliminary site interpretation concept through final design, bidding, and installation;
- WHEREAS on June 23, 2020, the MCWD Board of Managers approved the Wassermann Lake Preserve interpretive plan and authorized the District Administrator to solicit quotes for fabrication and installation;
- WHEREAS MCWD solicited quotes in two packages, Project A including the hub and entry sign, and Project B including all other interpretive elements, from five (5) companies and received quotes from two (2) companies; and concurrently solicited a proposal from LinnCo for installation of the interpretive elements and received its response;
- WHEREAS 4th Dimension Signs submitted the low quote for Project A and for fabrication of Project B, and MCWD staff and AFLA have determined that the quote is responsive and consider 4th Dimension Signs to be a responsible contractor; and LinnCo offered the most cost-competitive proposal for installation of Project B.

NOW, THEREFORE, BE IT RESOLVED that the Minnehaha Creek Watershed District Board of Managers authorizes the District Administrator, on advice of Counsel, to enter into a contract with 4th Dimension Signs in the amount of \$48,155 for Project A: Wassermann Lake Preserve Interpretive Hub and Entry Sign;

BE IT FURTHER RESOLVED that the Minnehaha Creek Watershed District Board of Managers authorizes the District Administrator, on advice of Counsel, to enter into a contract with 4th Dimension Signs in the amount of \$50,300 for Project B: Wassermann Lake Preserve Interpretive Elements, including installation of one (1) element and fabrication of five (5) elements;

BE IT FURTHER RESOLVED that the Minnehaha Creek Watershed District Board of Managers authorizes the District Administrator to execute a change order with LinnCo, Inc. for the installation of three (3) interpretive elements in the amount of \$20,045;

BE IT FINALLY RESOLVED that the Minnehaha Creek Watershed District Board of Managers establishes a not to exceed fabrication and installation budget of \$124,500, including a \$6,000 contingency, and authorizes the District Administrator to issue change orders up to that amount.

Resolution Number 20-060 was moved by Manager _____, seconded by Manager _____. Motion to adopt the resolution ___ ayes, ___ nays, ___ abstentions. Date: July 23, 2020.

_____ Date:
Secretary

WASSERMANN LAKE PRESERVE INTERPRETIVE PROGRAM



MINNEHAHA CREEK
WATERSHED DISTRICT
QUALITY OF WATER, QUALITY OF LIFE



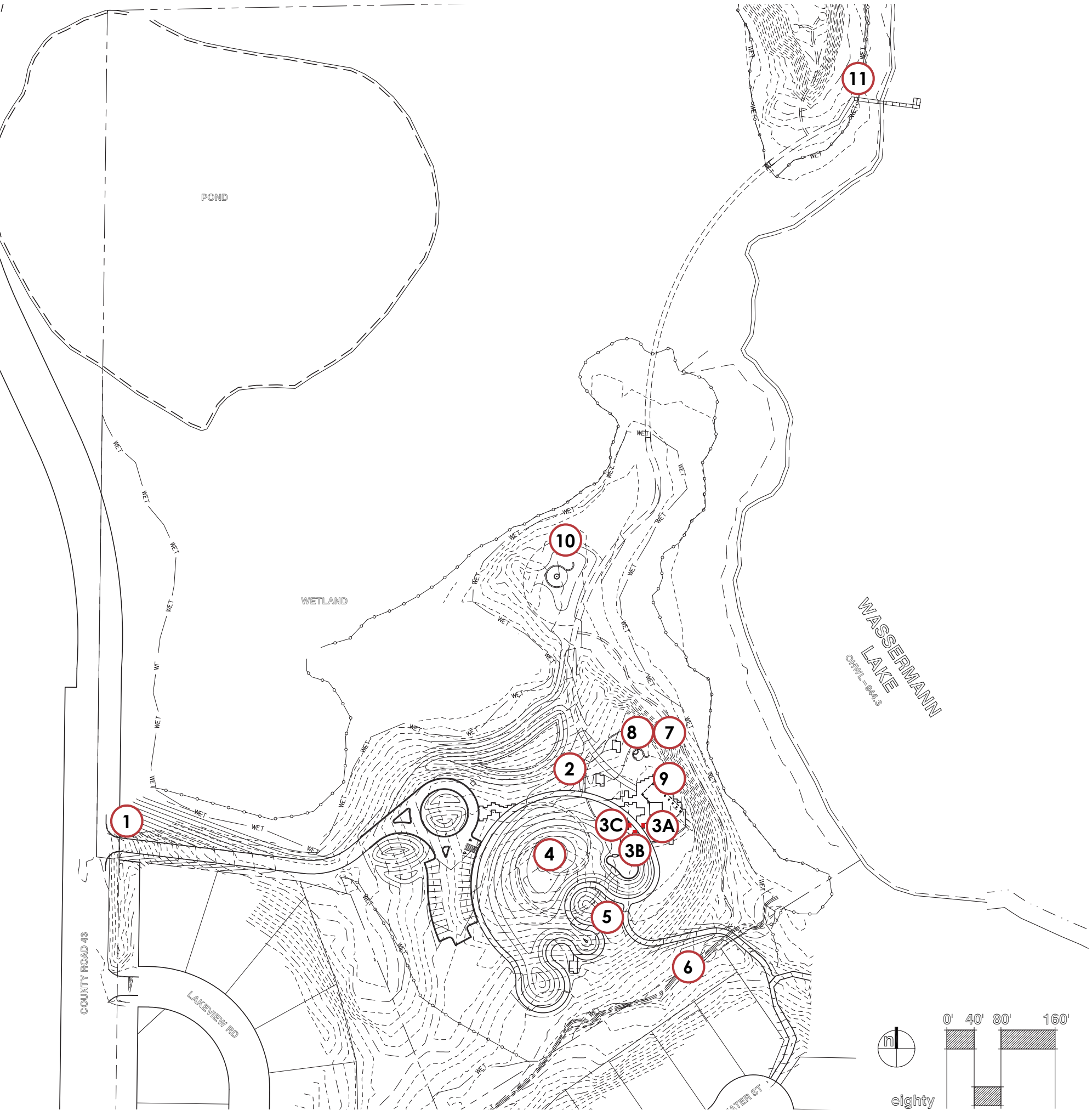
INTERPRETIVE NARRATIVE AND ORGANIZATION

central narrative

"land and water are connected"

interpretive interventions

- 1 - monument sign with oak silhouette
- 2 - cordwood walls
- 3 - interpretive hub
 - sign a: past - history and restoration*
 - sign b: present - Wassermann Preserve*
 - sign c: future - habitat of Victoria & larger watershed significance*
- 4 - watershed walk
- 5 - prairie to forest
- 6 - flow of water
- 7 - legacy oak
- 8 - wave seat walls
- 9 - wave benches & exposed aggregate concrete
- 10 - wetland transition
- 11 - lake chime



WASSERMANN MONUMENT SIGN

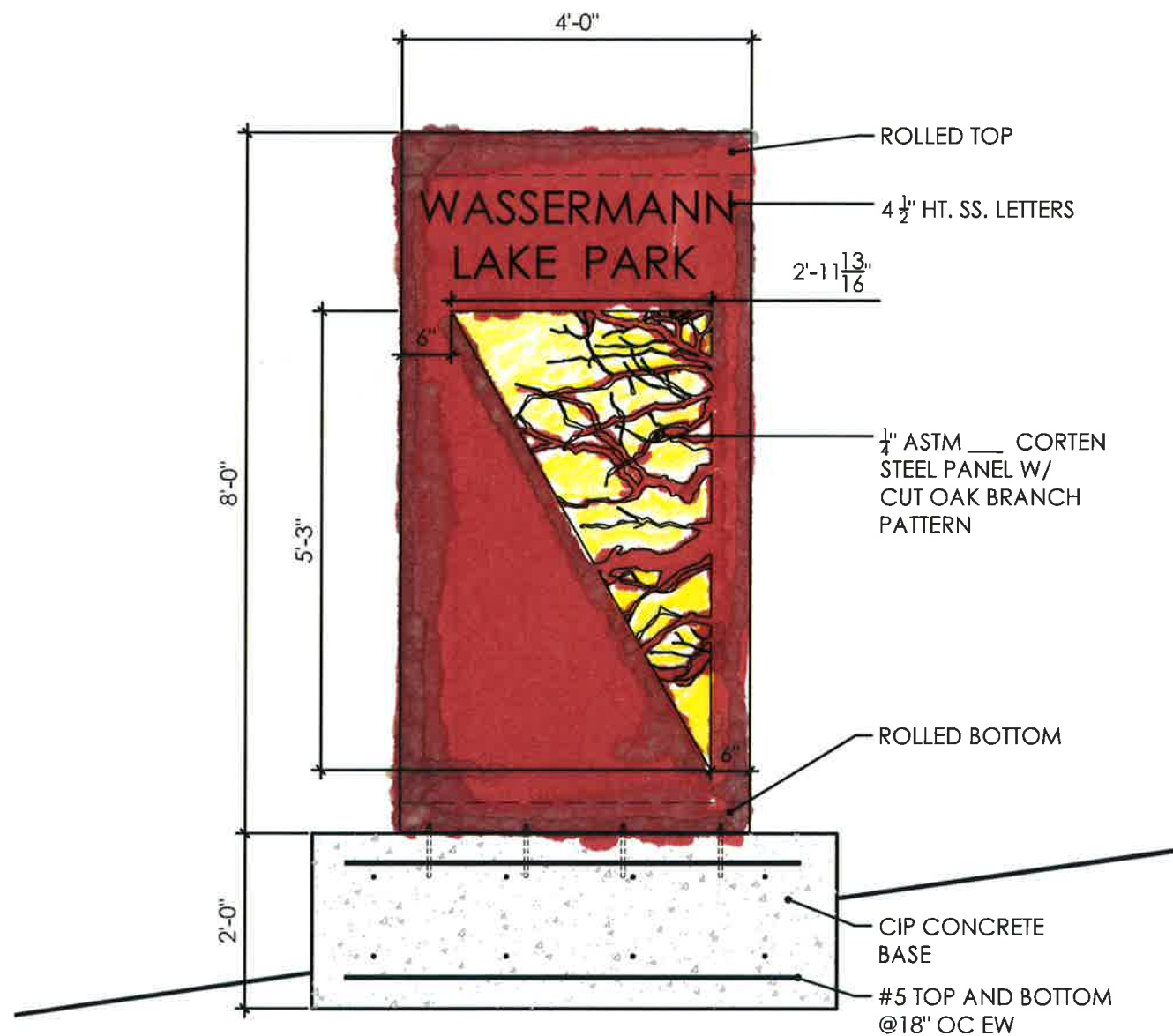
AT THE OAK
- BACK LIT

1. OAK SILHOUETTE MONUMENT SIGN

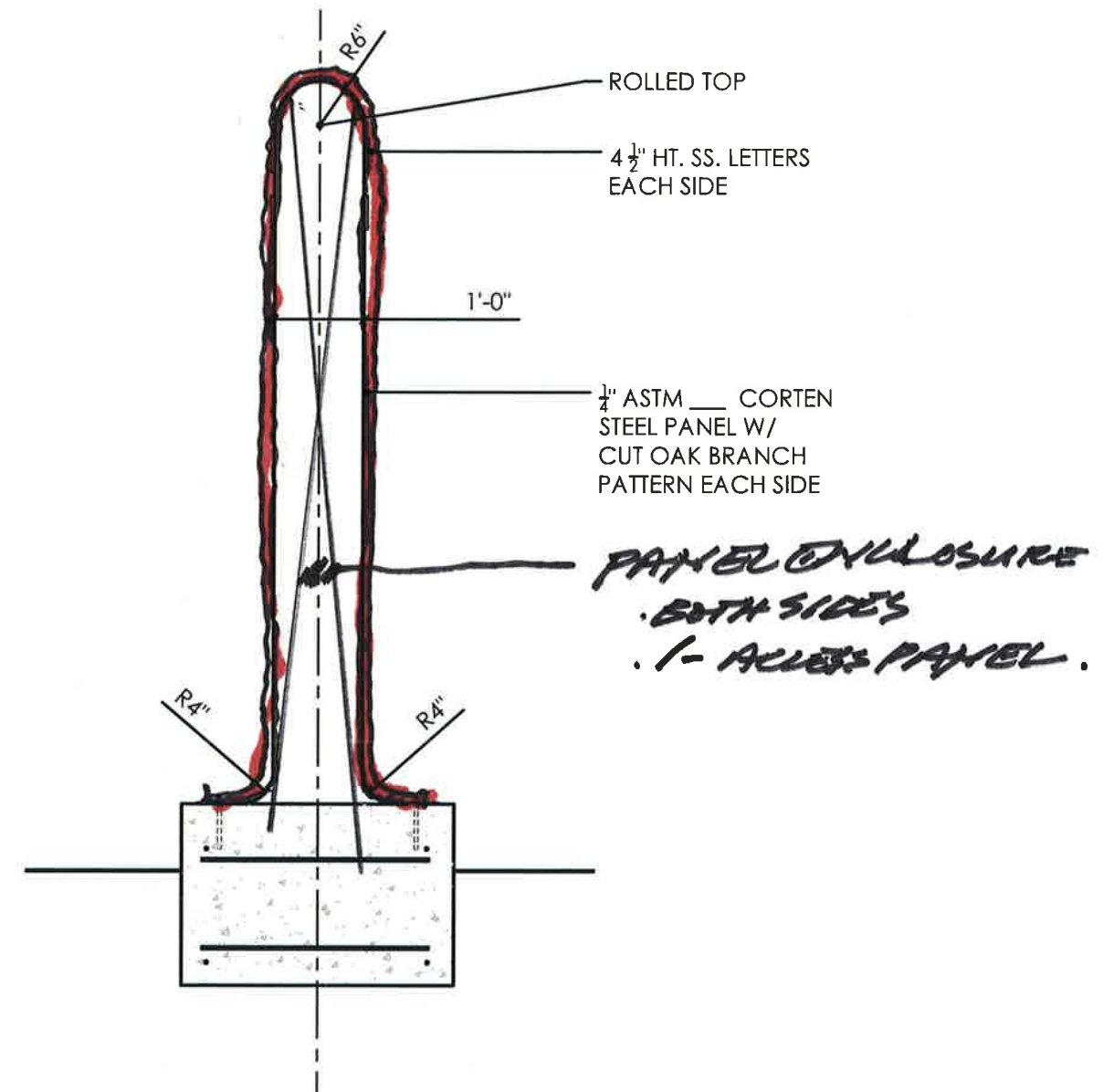
graphic features

- park monument sign is a key identity marker along hwy 43
- back-lit corten cut represents oak silhouette and provides a unique expression of the oak savanna

NORTH ELEVATION



SIDE ELEVATION

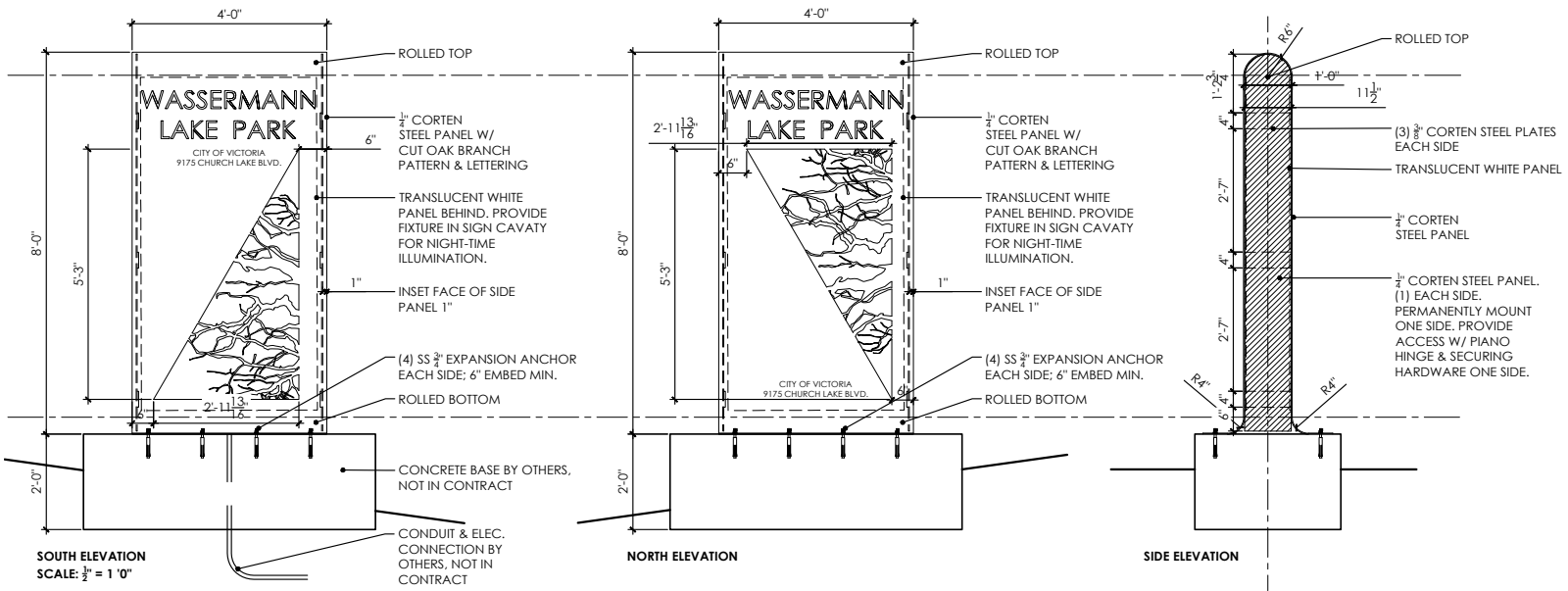
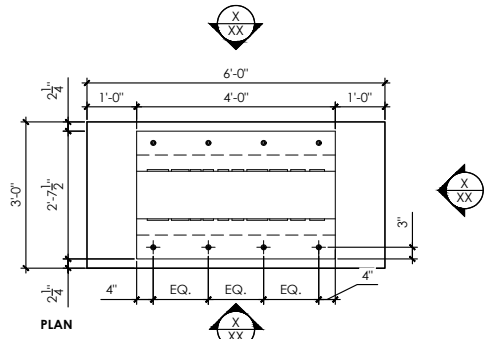


WASSERMANN
LAKE PRESERVE

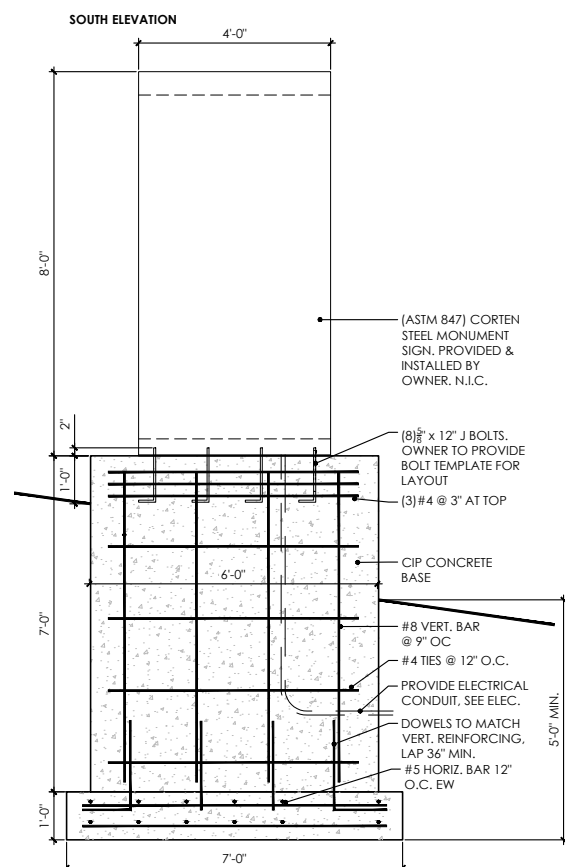


WASSERMANN
LAKE PARK

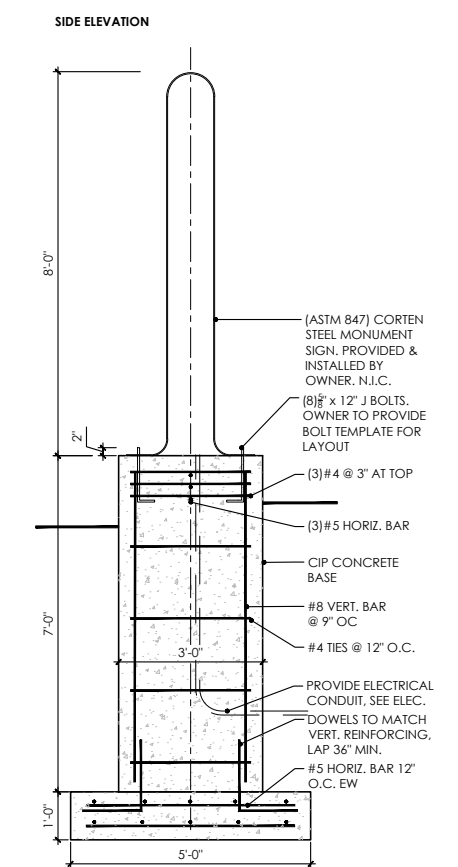




1 monument sign
 Scale: 1/2" = 1'-0"



10 monument sign pad
 Scale: 1/2" = 1'-0"



11 monument sign pad
 Scale: 1/2" = 1'-0"

client
MINNEHAHA CREEK WATERSHED DISTRICT

project
WASSERMANN LAKE PRESERVE - INTERPRETIVE ELEMENTS

PID 650230600 &
 PID 650230700
 COUNTY ROAD 43
 VICTORIA, MN 55318

PROJECT NUMBER: 190006

certification

I HEREBY CERTIFY that this plan, specification or report was prepared by me or under my direct supervision and that I am a duly Licensed Professional Architect under the laws of the State of Minnesota.
 SIGNATURE: *[Signature]*
 TYPED OR PRINTED NAME: CAESAR JAMES FERNANDEZ
 DATE: 02/18/2020 REG. NO.: 45414

issue / revision

NO DATE ISSUE / REVISION

sheet title

DETAILS

THIS SQUARE APPEARS 1/2" x 1/2" ON FULL SIZE SHEETS.

DRAWN BY:
 CHECKED BY:

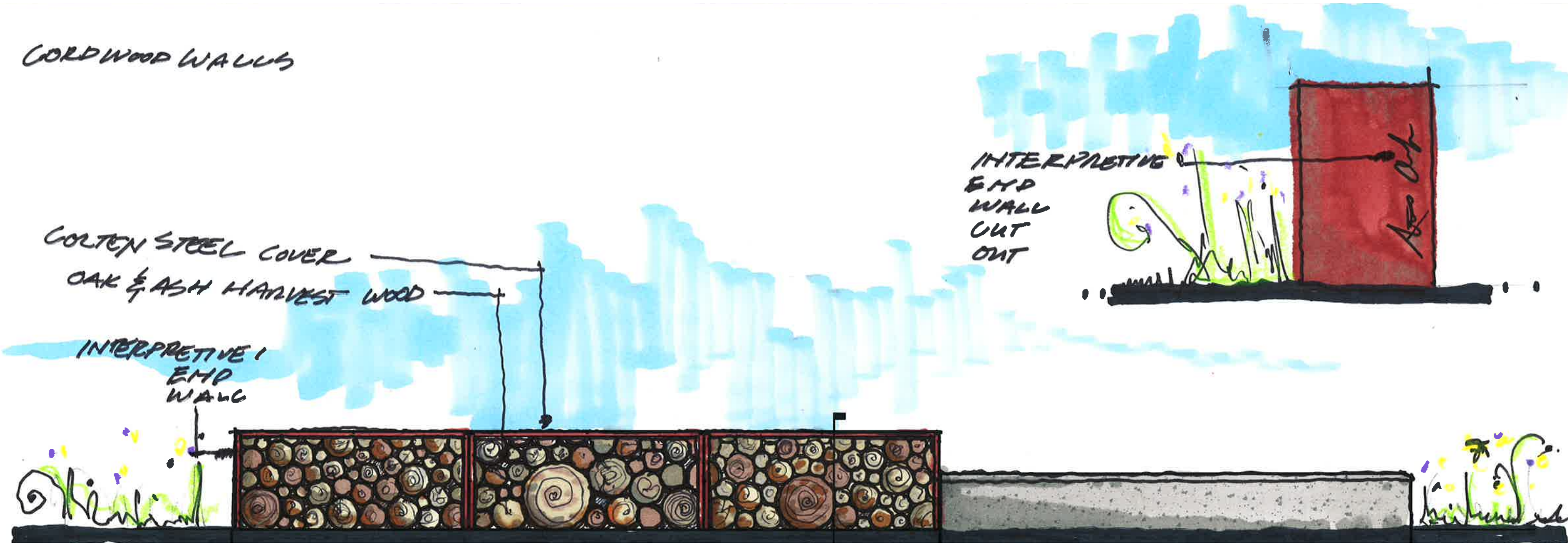
L3.0

2. SALVAGED CORDWOOD SITE WALLS

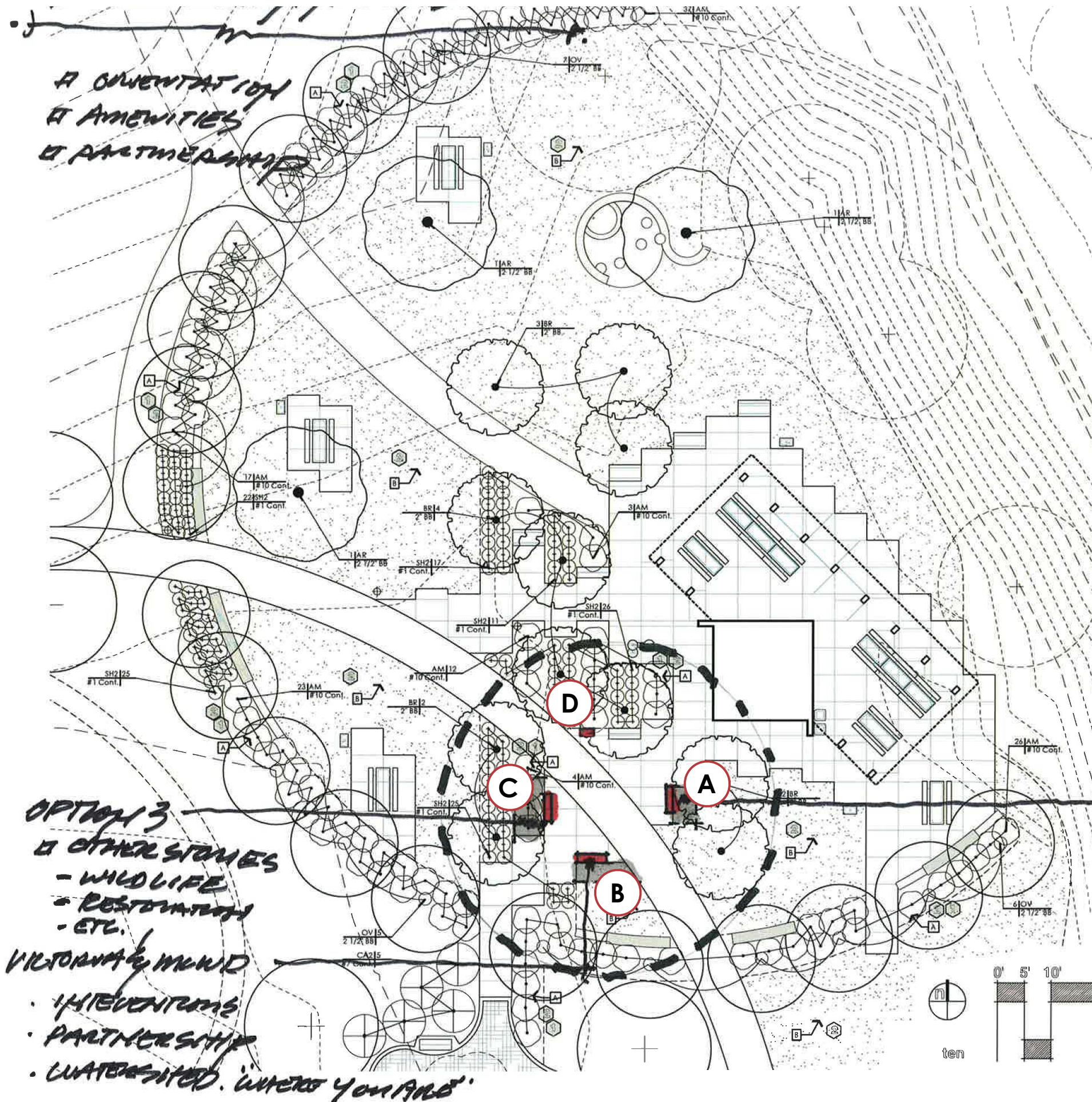
SHELTER PLAZA

graphic features

- walls constructed of oak and ash logs salvaged from site restoration work
- corten steel shroud covers cordwood
- end wall cutouts add direct interpretive narrative to material re-use story



3. INTERPRETIVE HUB PLAN



A CONCENTRATION
OF AMENITIES
AT PARTNER PARK

OPTION 3
OTHER STORIES
- WILDLIFE
- RESTORATION
- ETC.
VICTORIA & MOUND
- INTERVENTIONS
- PARTNERSHIP
- WATER-SITED. 'WHERE YOU ARE'

sign a: story of an oak savanna

front:

- historic vs. modern aerial comparison showing changes to the site and surrounding area (development patterns, vegetation, etc.) and explaining the benefits of restoring the site to an oak savanna.

back:

- expressive cutout of a bur oak tree in an oak savanna environment

sign b: wassermann lake preserve

front:

- map of the preserve to provide orientation to users, overlaid with information on key habitat types found within the park and the species they support.

back:

- contour map of the surrounding area (lower half of six-mile creek) showing relationship between landform, streams, lakes, and wetlands.

sign c: habitats of victoria

front:

- regional map depicting relationship between water, recreation, and habitat nodes and corridors in Victoria and the Six-Mile Creek- Halsted Bay Subwatershed.

back:

- expressive cutout of the Mississippi River Basin draining to the Gulf of Mexico

sign d: interpretive gallery

front:

- map of interpretive elements in the park along with short descriptions.

3. INTERPRETIVE HUB

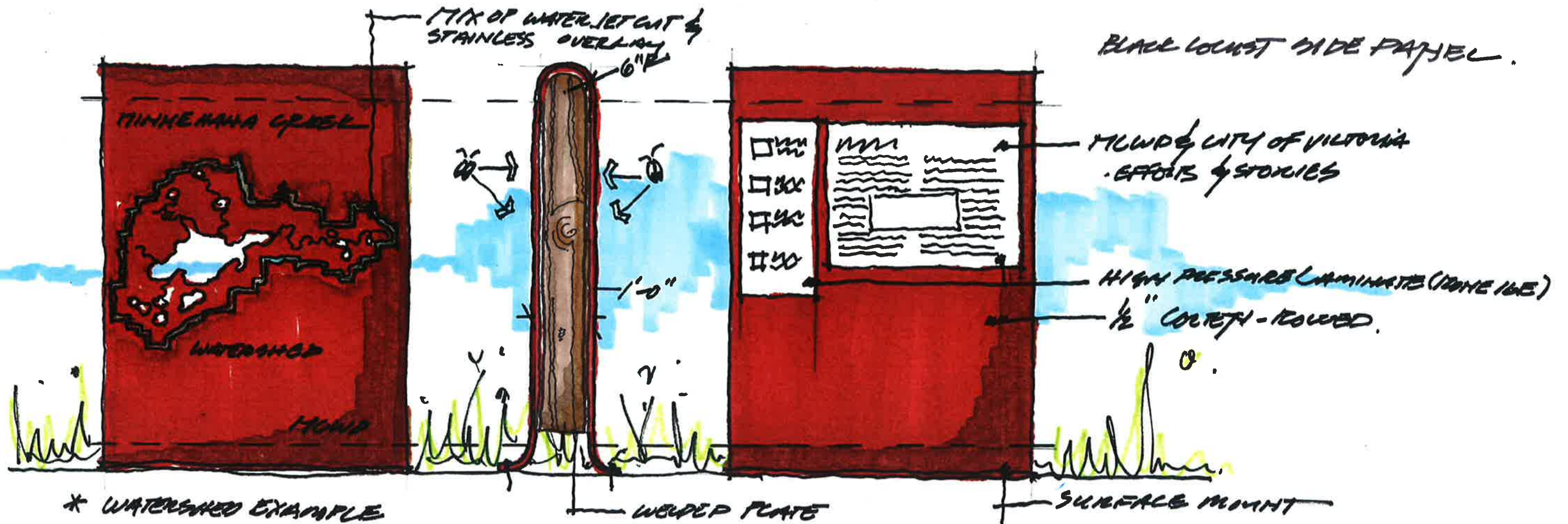
SIGNS A, B, & C

graphic features

- expressive frames cutout from corten
- colorful custom graphic inserts with interpretive images and stories that illustrate the narrative of each panel
- wood side panels match park shelter

HUB: PANEL DESIGN

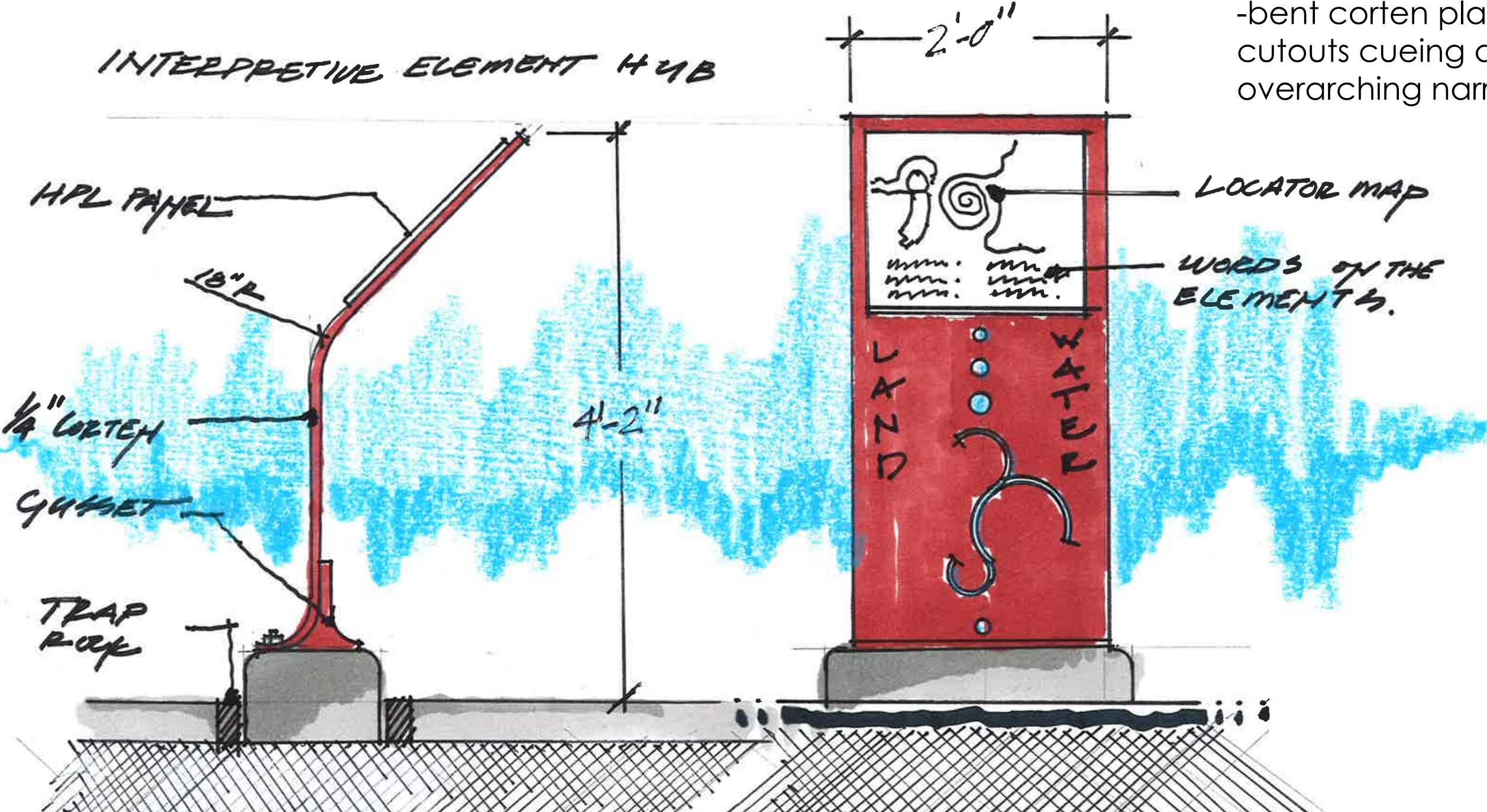
- 2 OR 3 PANELS - 2 SIDED
- RIBBON SIGN
- FLOW



3. INTERPRETIVE HUB SIGN D

graphic features

- high pressure laminate panel with locator map of interpretive elements in the park along with short descriptions of the elements.
- bent corten plate with expressive cutouts cueing audience in to overarching narrative.



WASSERMANN LAKE PRESERVE

HABITATS IN THE PARK

- 1. UPLAND FOREST
- 2. WETLAND
- 3. OPEN PRAIRIE
- 4. RIVER

INTERPRETIVE GALLERY

1. INTERPRETIVE GALLERY
2. WETLAND
3. OPEN PRAIRIE
4. RIVER
5. UPLAND FOREST
6. WASSERMANN LAKE PRESERVE



MINNEHAHA CREEK WATERSHED



WATERSHED FEATURES

- 1. MINNEHAHA CREEK
- 2. WATERSHED
- 3. UPLAND FOREST
- 4. WETLAND
- 5. OPEN PRAIRIE
- 6. RIVER

VICTORIA - CITY OF



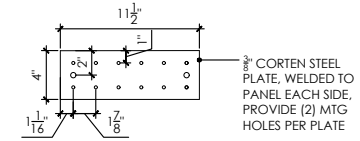
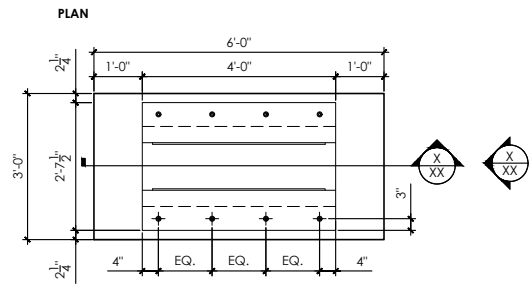
VICTORIA FEATURES

1. WASSERMANN LAKE PRESERVE
2. WETLAND
3. OPEN PRAIRIE
4. RIVER
5. UPLAND FOREST
6. WASSERMANN LAKE PRESERVE

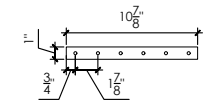


WASSERMANN PARK

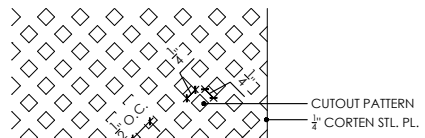
WASSERMANN LAKE PRES



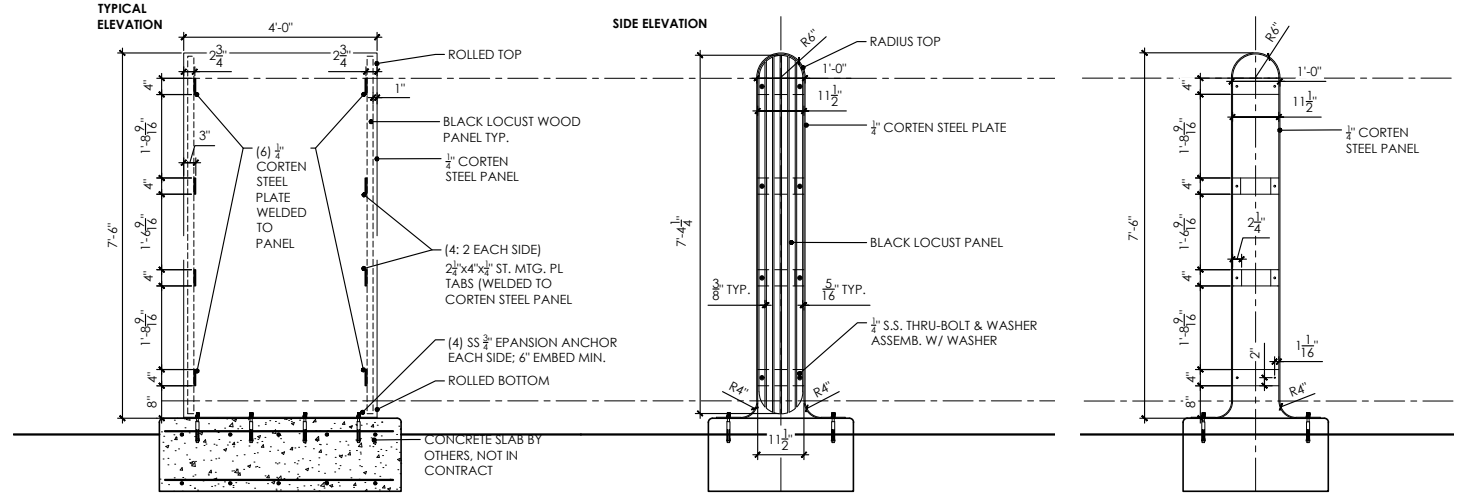
1 mounting plate A typ.
 Scale: 1/2" = 1'-0"



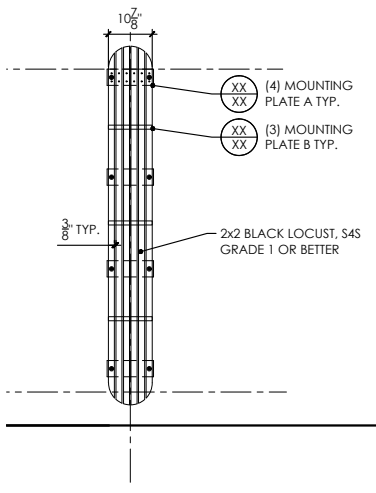
1 mounting plate B typ.
 Scale: 1/2" = 1'-0"



1 cut corten pattern typ.
 Scale: 6" = 1'-0"



1 hub sign typ.
 Scale: 1/2" = 1'-0"



1 hub sign - wood inset typ.
 Scale: 1/2" = 1'-0"

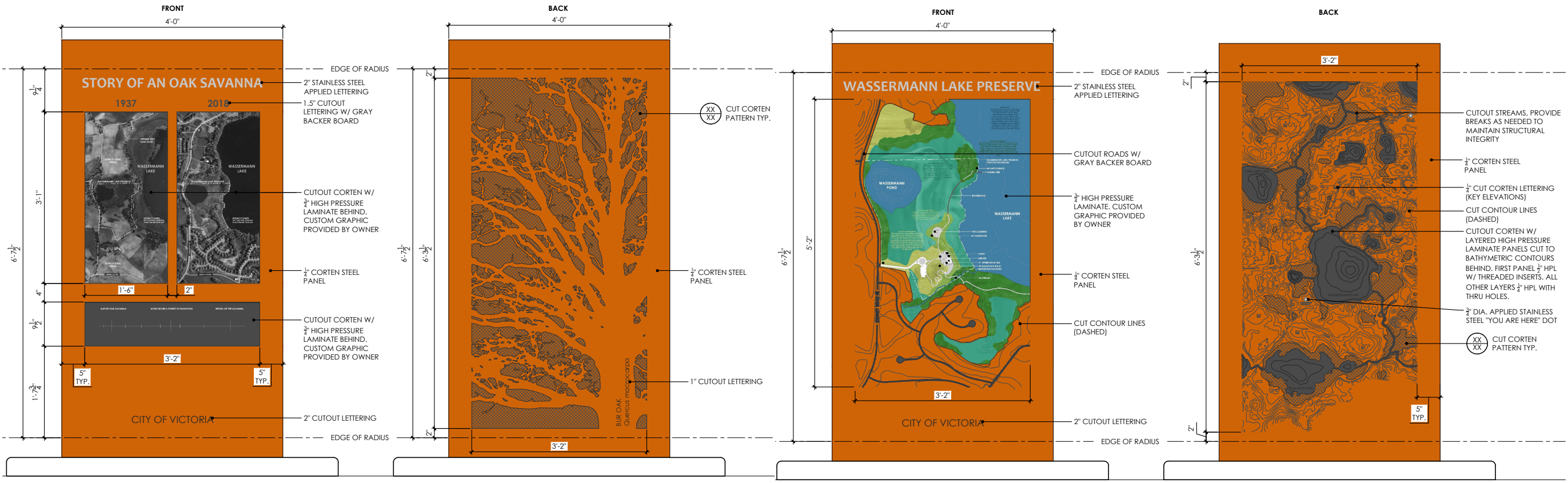
client
MINNEHAHA CREEK WATERSHED DISTRICT

project
WASSERMANN LAKE PRESERVE - INTERPRETIVE ELEMENTS
 PID 650230600 & PID 650230700
 COUNTY ROAD 43
 VICTORIA, MN 55318

PROJECT NUMBER: 190006

certification

I HEREBY CERTIFY that this plan, specification or report was prepared by me or under my supervision and that I am a duly Licensed Architect under the laws of the State of Minnesota.
PRELIMINARY NOT FOR CONSTRUCTION
 SIGNATURE: *James Fernandez*
 TYPED OR PRINTED NAME: JAMES JAMES FERNANDEZ
 DATE: 11/15/2020 REG. NO.: 45414



1 hub sign A
 Scale: 1" = 1'-0"

1 hub sign B
 Scale: 1" = 1'-0"

issue / revision

NO	DATE	ISSUE / REVISION

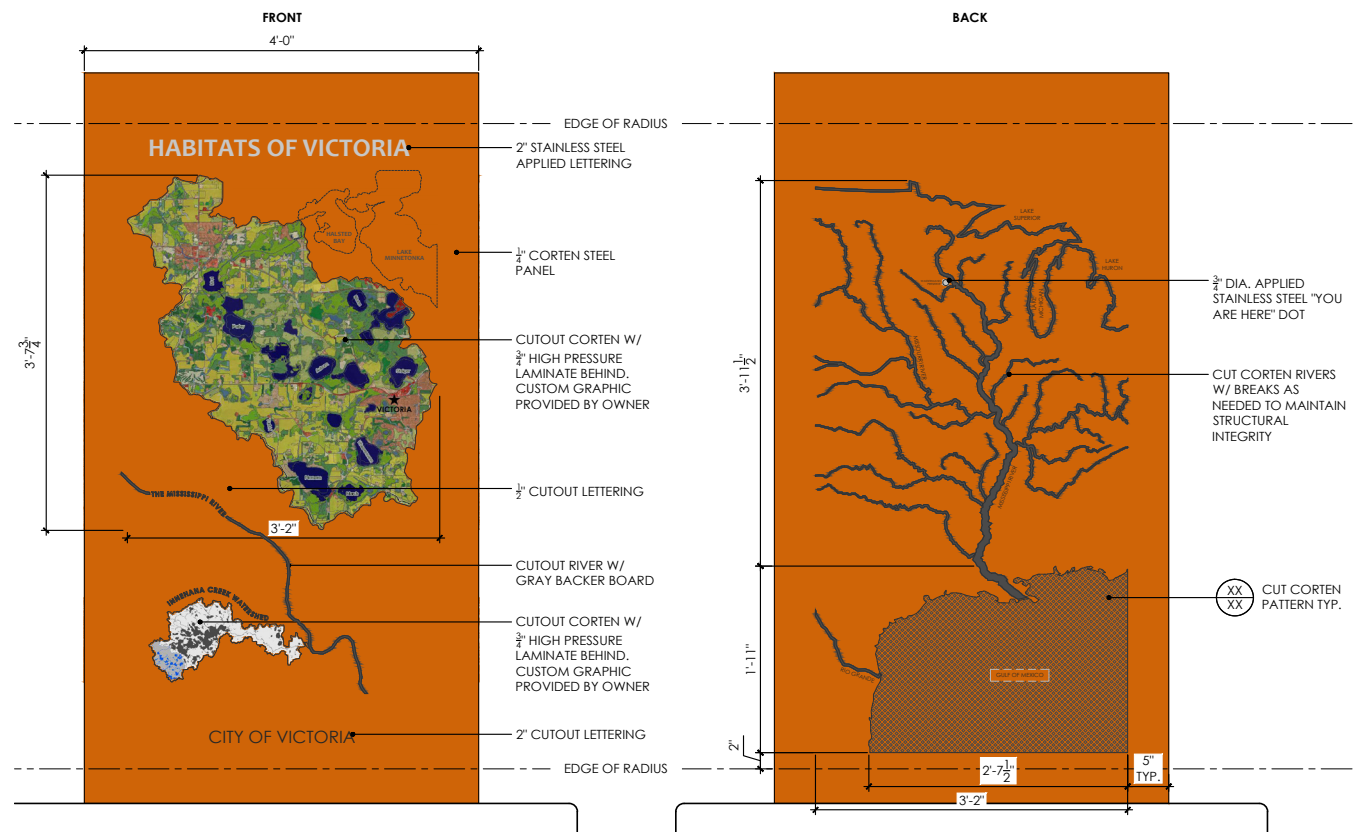
sheet title

DETAILS

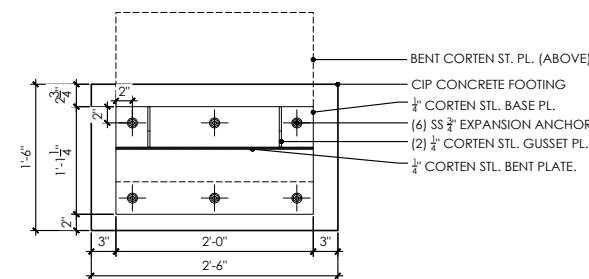
THIS SQUARE APPEARS 1/2" x 1/2" ON FULL SIZE SHEETS.

DRAWN BY:
 CHECKED BY:

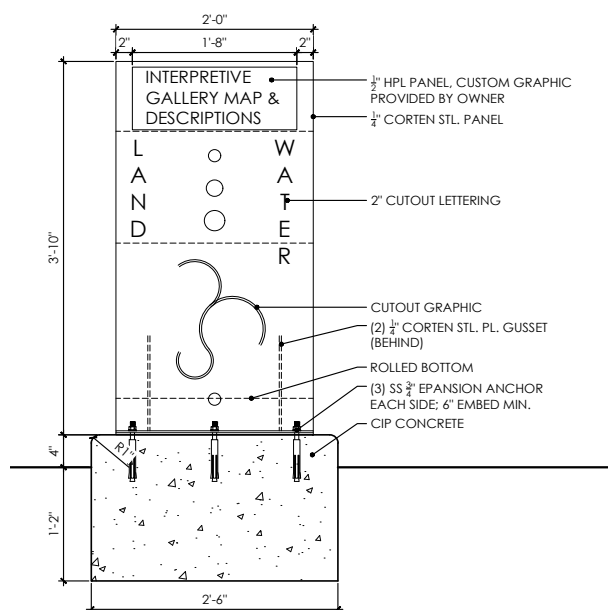
L3.1



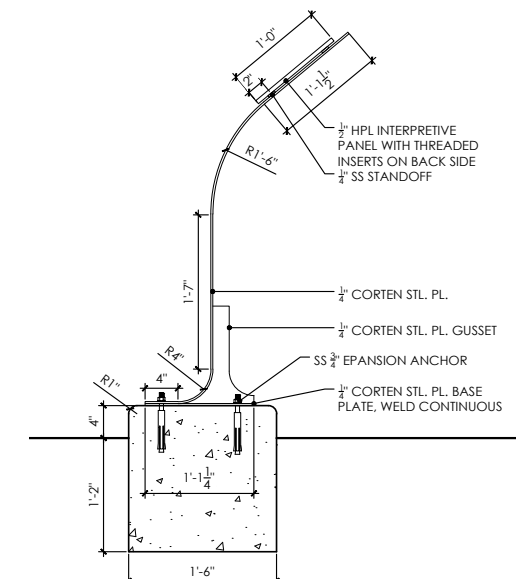
1 hub sign C
 Scale: 1" = 1'-0"



1 hub sign D - plan
 Scale: 1" = 1'-0"



1 hub sign D - elev.
 Scale: 1" = 1'-0"



1 hub sign D - section
 Scale: 1" = 1'-0"

client
MINNEHAHA CREEK WATERSHED DISTRICT

project
WASSERMANN LAKE PRESERVE - INTERPRETIVE ELEMENTS
 PID 650230600 & PID 650230700
 COUNTY ROAD 43
 VICTORIA, MN 55318

PROJECT NUMBER: 190006

certification

I HEREBY CERTIFY that this plan, specification or report was prepared by me or under my direct supervision and that I am a duly Licensed Professional Architect under the laws of the State of Minnesota.
PRELIMINARY NOT FOR CONSTRUCTION
 SIGNATURE: *James Fernandez*
 TYPED OR PRINTED NAME: JAMES JAMES FERNANDEZ
 DATE: xx/xx/xxxx REG. NO.: 45414

issue / revision

NO DATE ISSUE / REVISION

sheet title

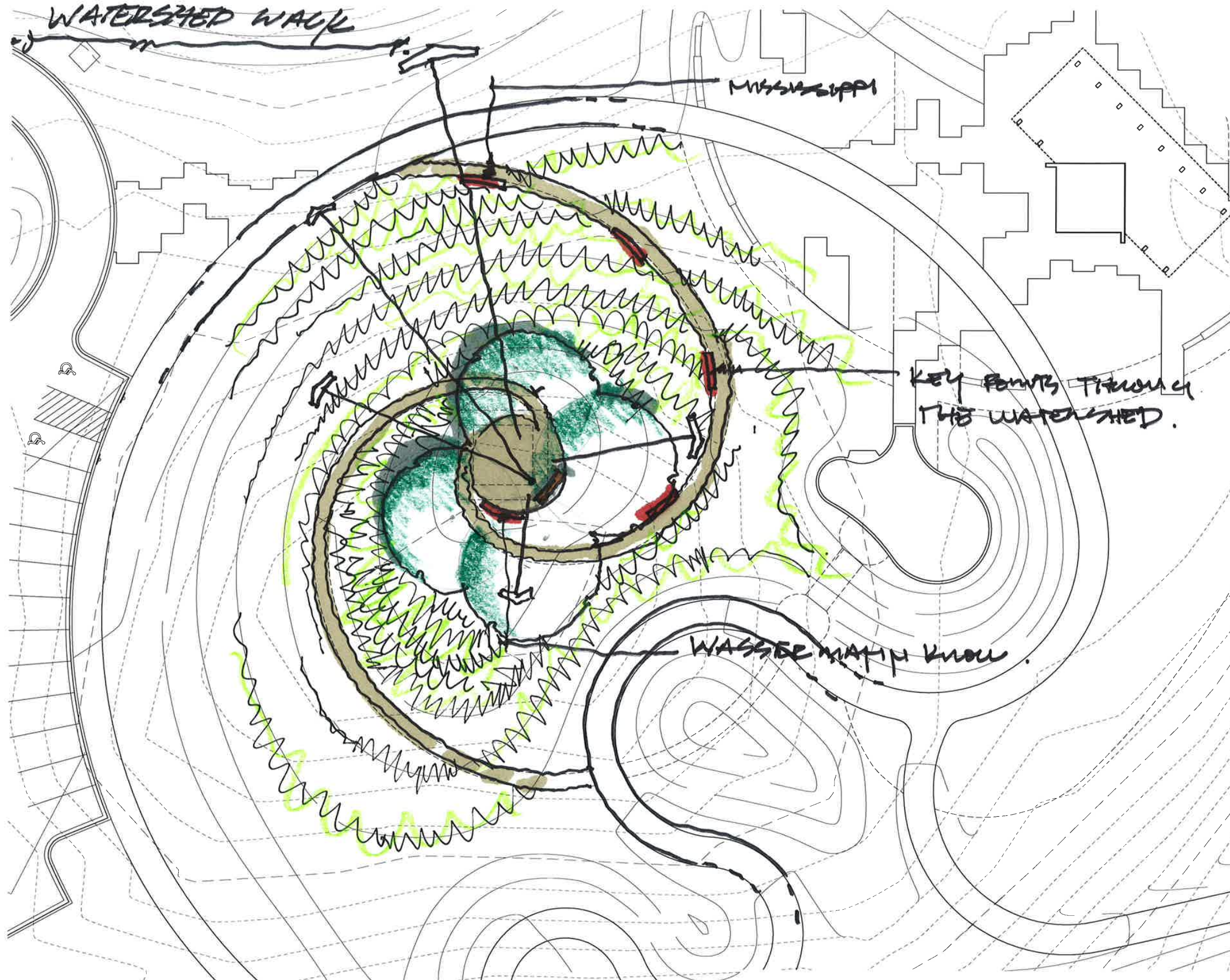
DETAILS

THIS SQUARE APPEARS 1/2" x 1/2" ON FULL SIZE SHEETS.

DRAWN BY:
 CHECKED BY:

L3.2

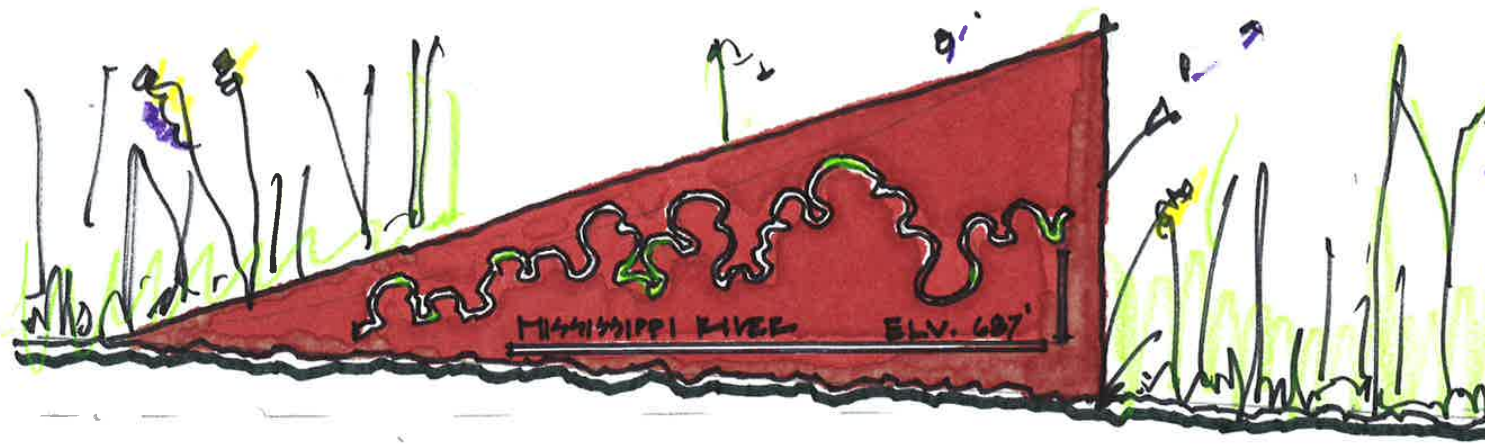
4. WATERSHED WALK PLAN



graphic features

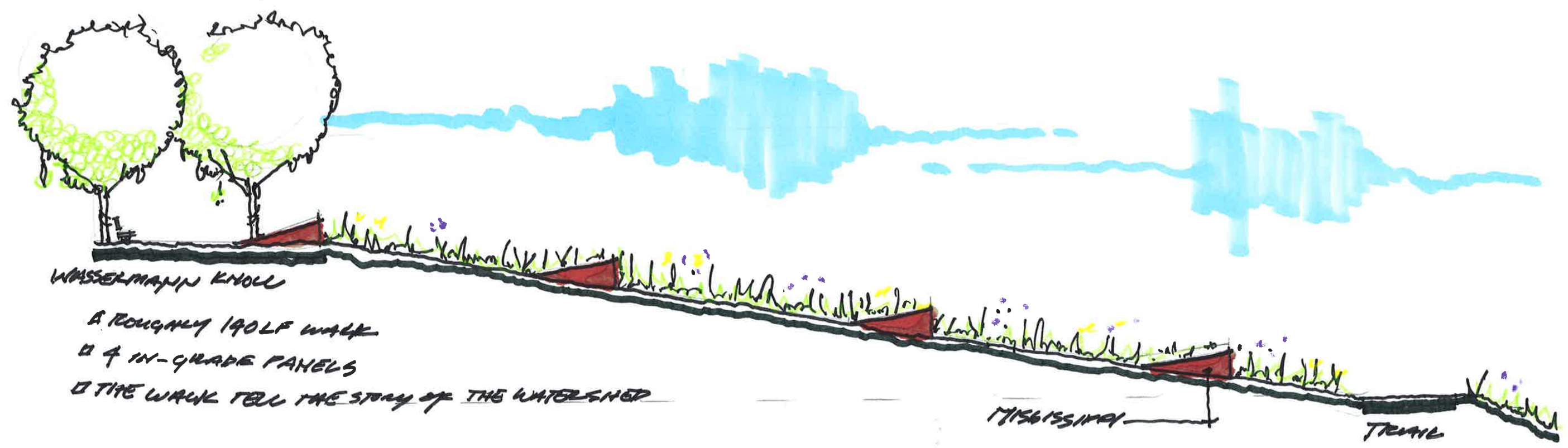
- 4 corten panels tell the story of the watershed through key locations that define the character of the watershed
- placement reflects the path of water from the Wassermann Lake Preserve to the Mississippi River and beyond
- custom cut out graphics illustrate the narrative of each panel and the watershed as a whole

4. WATERSHED WALK PANELS



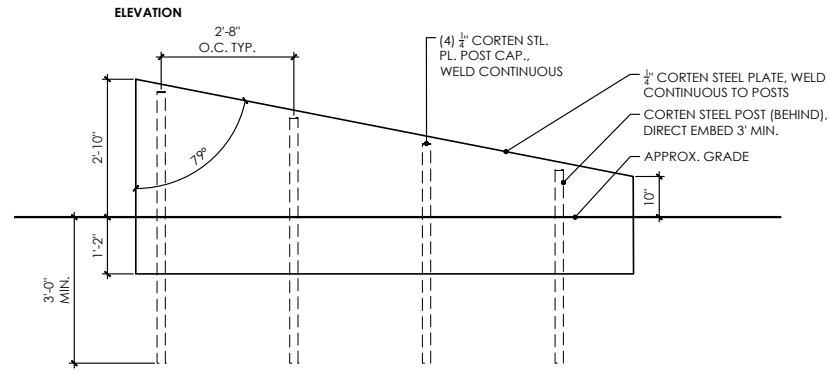
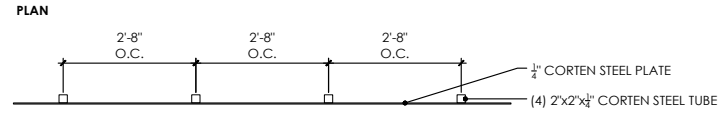
- WATERSHED WALK**
- WASSERMANN KNOLL 975.25'
 - WASSERMANN LAKE 945'
 - MINNETONKA (DAM) 930'
 - MINNETONKA FARM ELY. 810'
 - MISSISSIPPI R. ELY. 687'

graphic features
- corten cutouts illustrate the form of the river at key moments along with their names and elevations

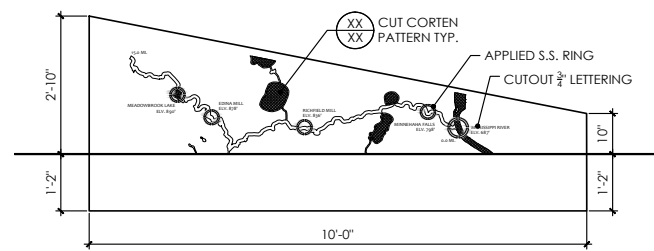


WASSERMANN KNOLL
A ROUGHLY 190LF WALK
4 IN-GRADE PANELS
THE WALK TELL THE STORY OF THE WATERSHED

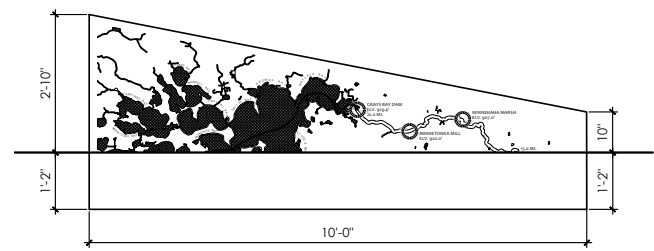
MISSISSIPPI
TRAIL



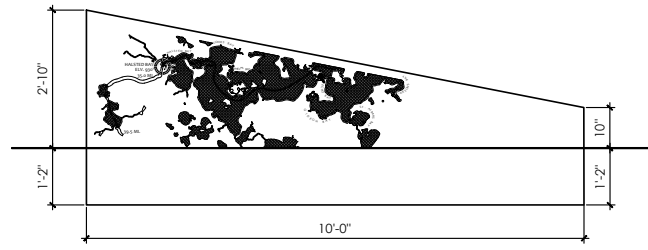
1 watershed walk typ,
 Scale: 1/2" = 1'-0"



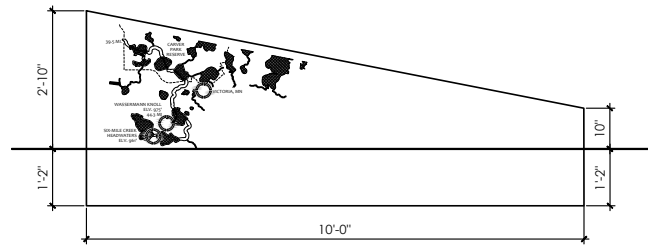
1 watershed walk - panel 1
 Scale: 1/2" = 1'-0"



1 watershed walk - panel 2
 Scale: 1/2" = 1'-0"



1 watershed walk - panel 3
 Scale: 1/2" = 1'-0"



1 watershed walk - panel 4
 Scale: 1/2" = 1'-0"

client
MINNEHAHA CREEK WATERSHED DISTRICT

project
WASSERMANN LAKE PRESERVE - INTERPRETIVE ELEMENTS
 PID 650230600 &
 PID 650230700
 COUNTY ROAD 43
 VICTORIA, MN 55318

PROJECT NUMBER: 190006

certification

I HEREBY CERTIFY that this plan, specification or report was prepared by me or under my direct supervision and that I am a duly Licensed Professional Architect under the laws of the State of Minnesota.
 SIGNATURE: *James Fernandez*
 TYPED OR PRINTED NAME: JAMES FERNANDEZ
 DATE: 02/14/2020 REG. NO.: 45414

PRELIMINARY NOT FOR CONSTRUCTION

issue / revision

NO	DATE	ISSUE / REVISION

sheet title
DETAILS

THIS SQUARE APPEARS 1/2" x 1/2" ON FULL SIZE SHEETS.

DRAWN BY:
 CHECKED BY:

L3.3

5. PRAIRIE TO FOREST PLAN

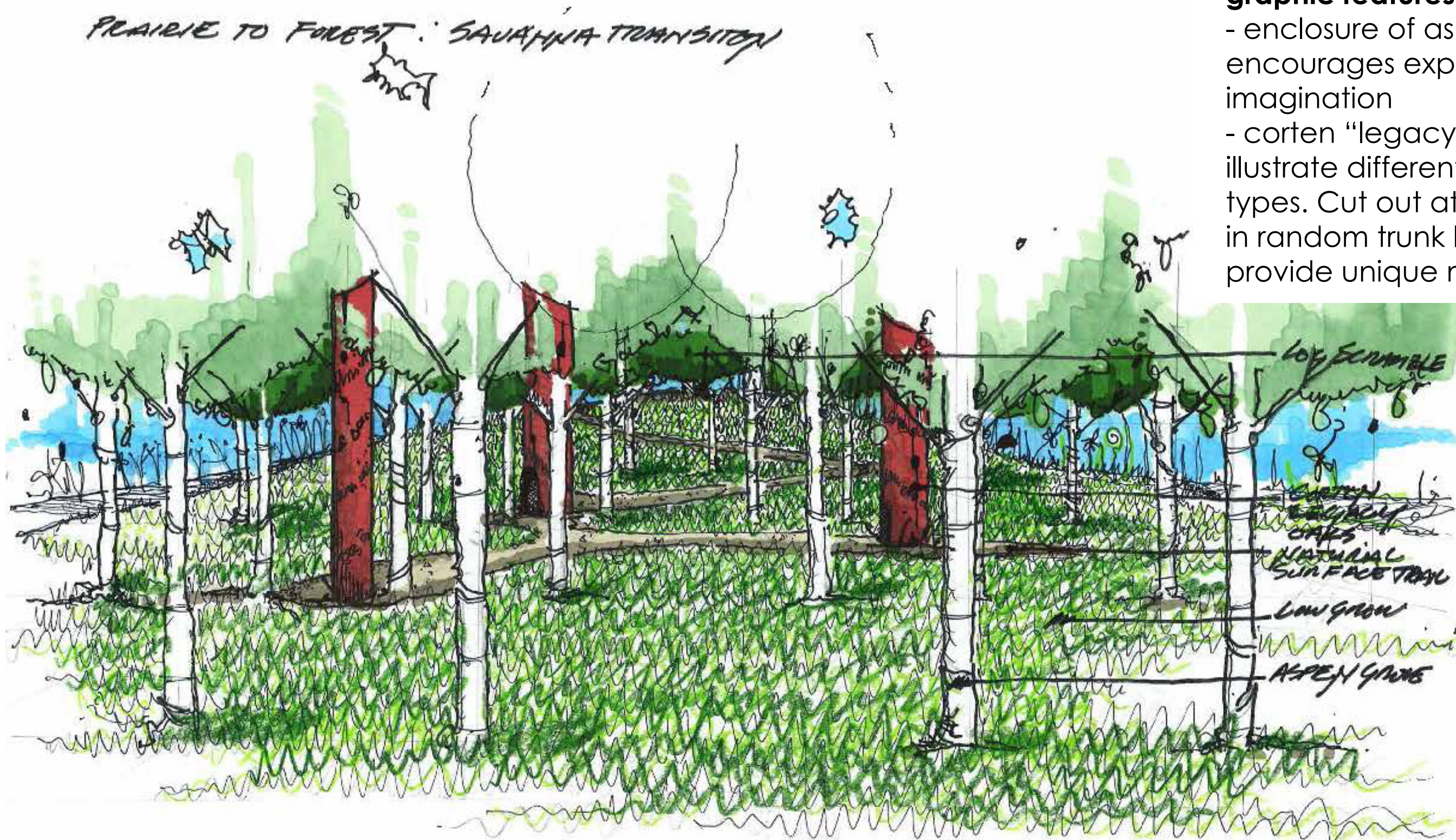
graphic features

- playful grove knitted into play
- spaces and key intersection of park paths- location highlights the transition of forest to prairie. A story of both time (early successional forest) as well as space (prairie edge to oak forest).
- aspens express the forest "edge"



5. PRAIRIE TO FOREST PLAY SPACE

PRAIRIE TO FOREST: SAVANNAH TRANSITION



graphic features

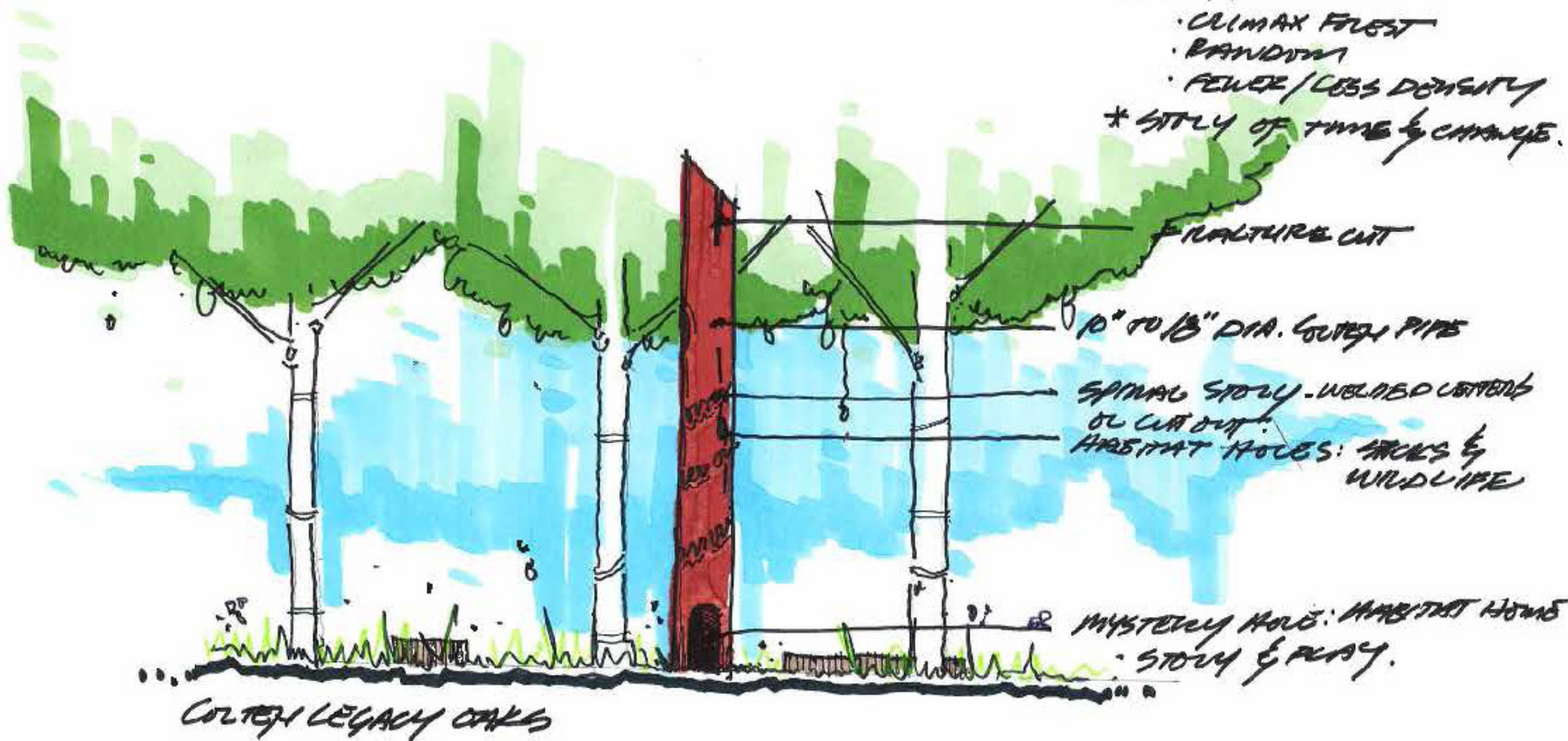
- enclosure of aspen grove encourages exploration and imagination
- corten "legacy oaks" illustrate different forest cover types. Cut out at bases & in random trunk locations provide unique messaging.

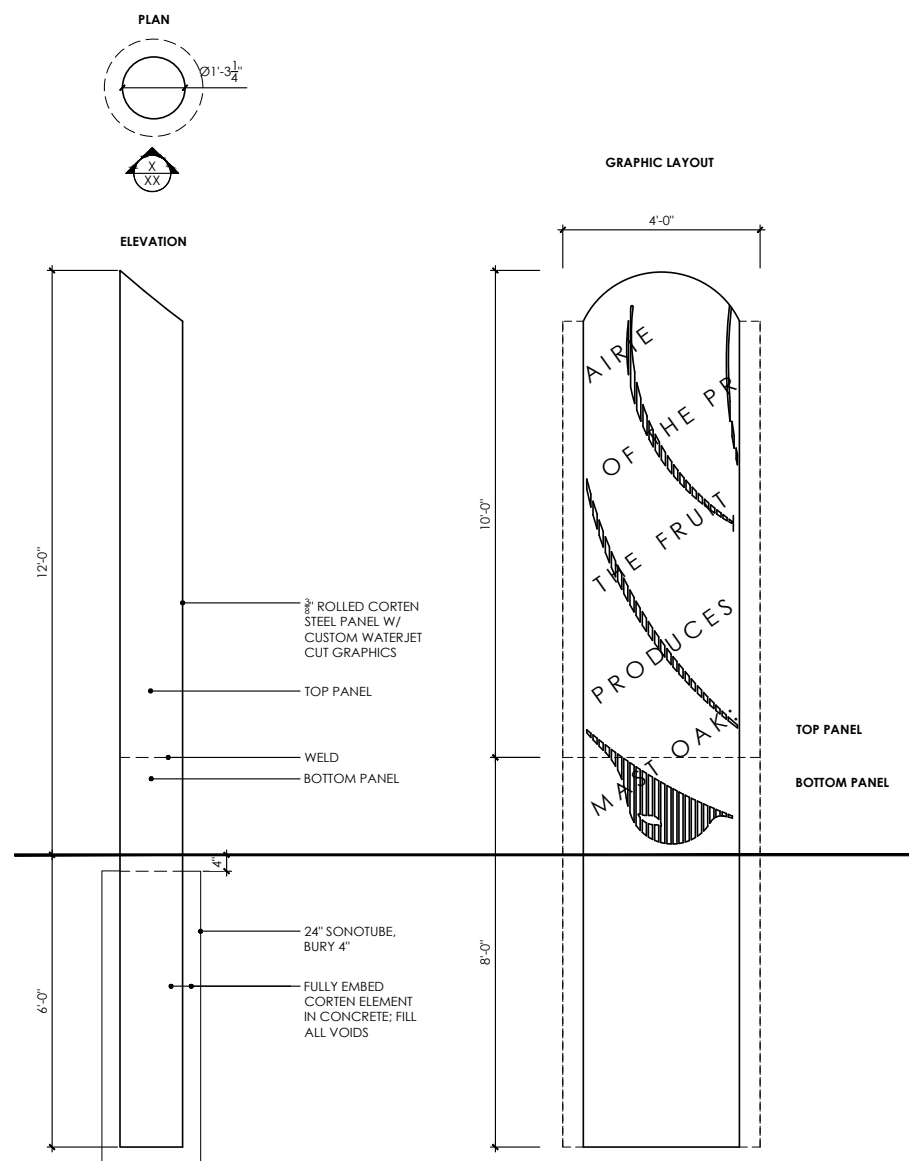
5. PRAIRIE TO FOREST OAKS AND ASPENS

graphic features

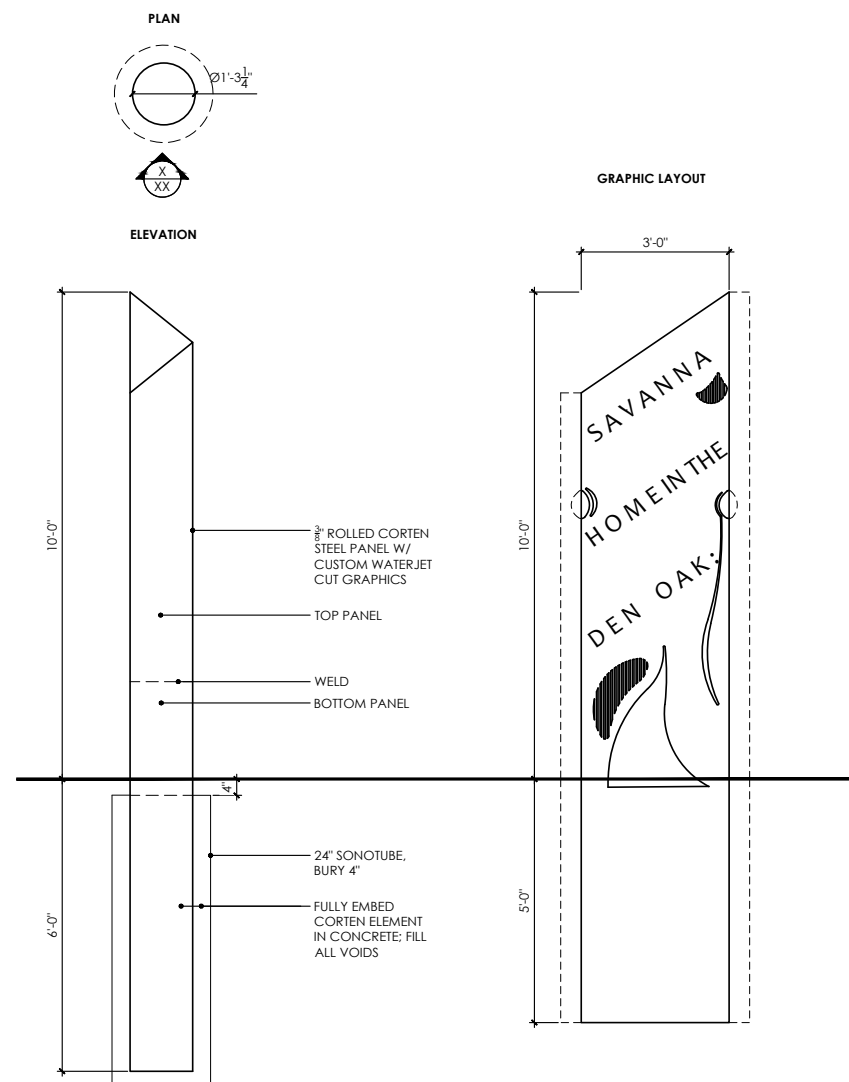
- merged "tree" cover types represent succession and transition of vegetation covers through both space and time.
- corten cut-outs in oak represent trees as habitat and are playful and encourage interaction.

PRAIRIE TO FOREST: SAVANNAH TRANSITION.
SPACE & TIME

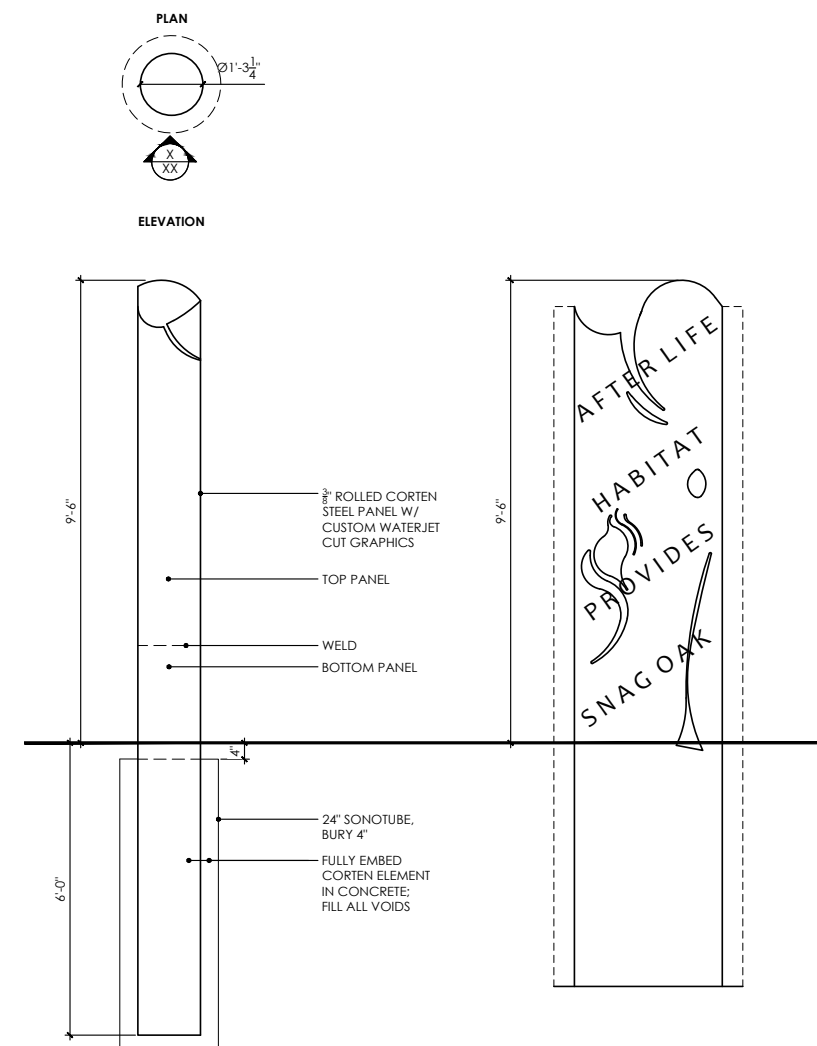




1 prairie transition - mast tree
 Scale: 1/2" = 1'-0"



1 prairie transition - den tree
 Scale: 1/2" = 1'-0"



1 prairie transition - snag tree
 Scale: 1/2" = 1'-0"

client
MINNEHAHA CREEK WATERSHED DISTRICT

project
WASSERMANN LAKE PRESERVE - INTERPRETIVE ELEMENTS
 PID 650230600 & PID 650230700
 COUNTY ROAD 43
 VICTORIA, MN 55318

PROJECT NUMBER: 190006

certification
 I HEREBY CERTIFY that this plan, specification or report was prepared by me or under my direct supervision and that I am a duly Licensed Professional Architect under the laws of the State of Minnesota.
PRELIMINARY NOT FOR CONSTRUCTION
 SIGNATURE: *James Fernandez*
 TYPED OR PRINTED NAME: JAMES JAMES FERNANDEZ
 DATE: xx/xx/xxxx REG. NO.: 45414

issue / revision

NO	DATE	ISSUE / REVISION

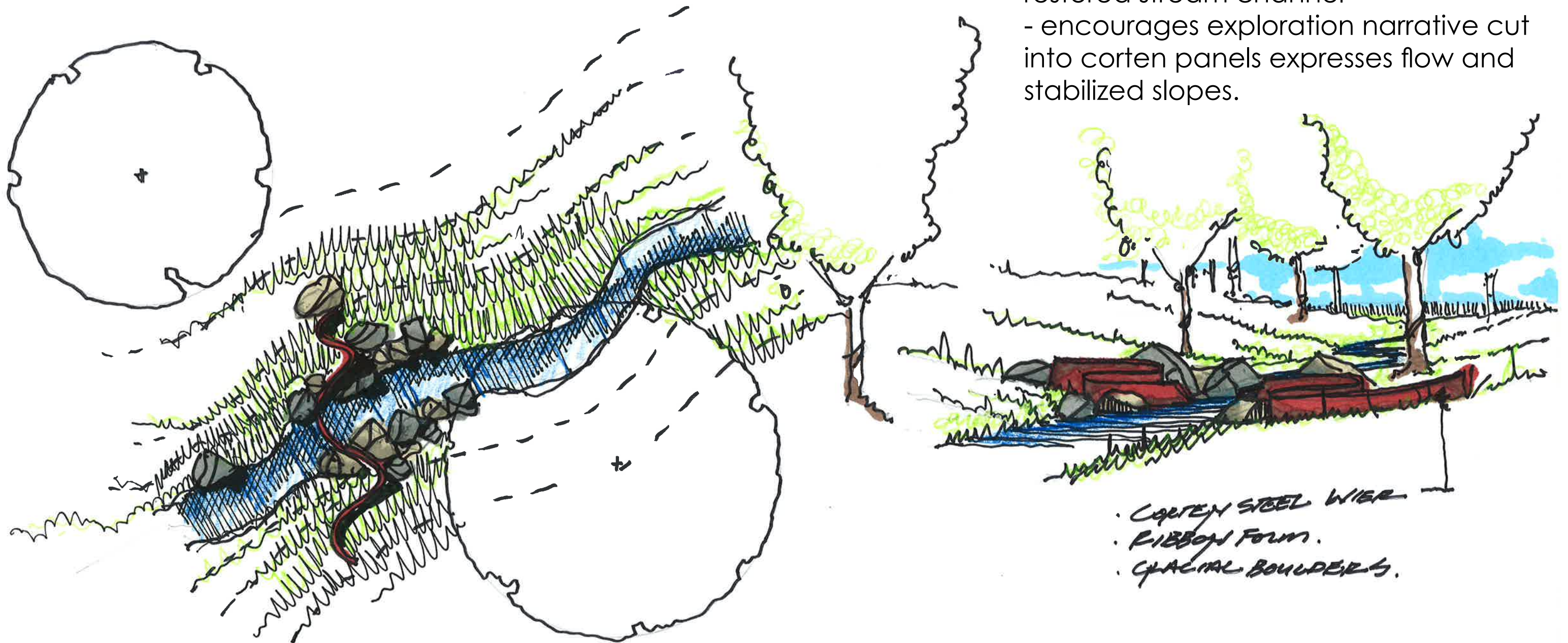
sheet title
DETAILS

THIS SQUARE APPEARS 1/2" x 1/2" ON FULL SIZE SHEETS.

DRAWN BY:
 CHECKED BY: **L3.4**

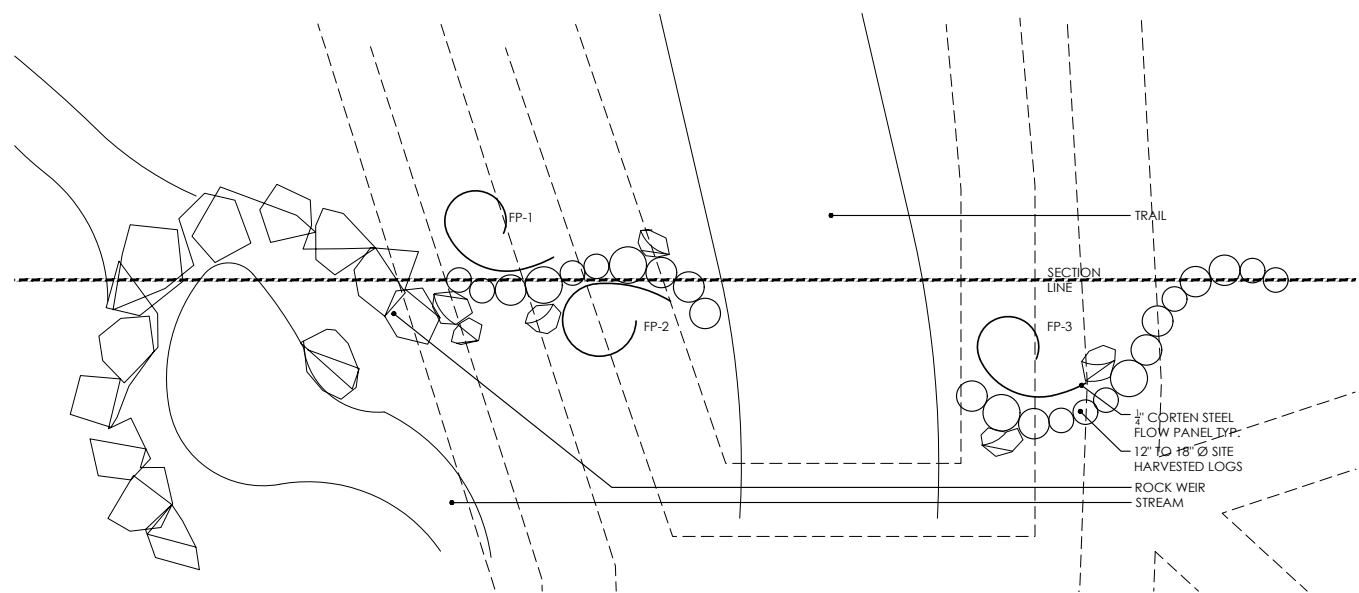
6. FLOW OF WATER STREAM

FLOW OF WATER

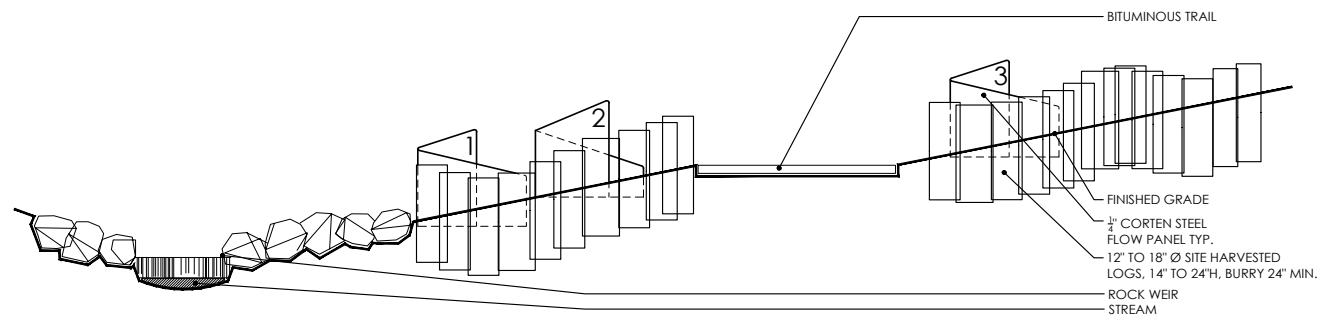


graphic features

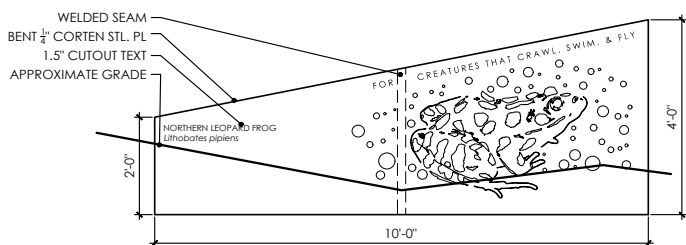
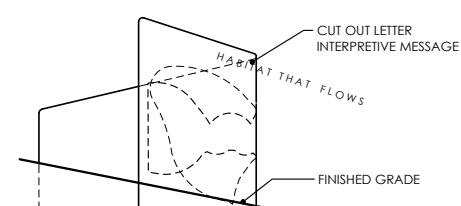
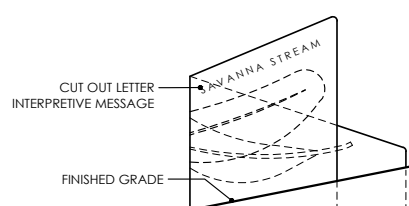
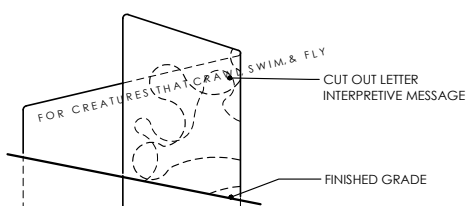
- corten "ribbon" illustrates the movement of water
- placement near slope of stream and rock weir highlights the function of the restored stream channel
- encourages exploration narrative cut into corten panels expresses flow and stabilized slopes.



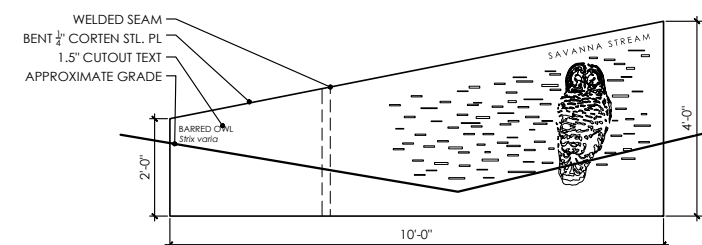
1 flow panels - plan
 Scale: 1/4" = 1'-0"



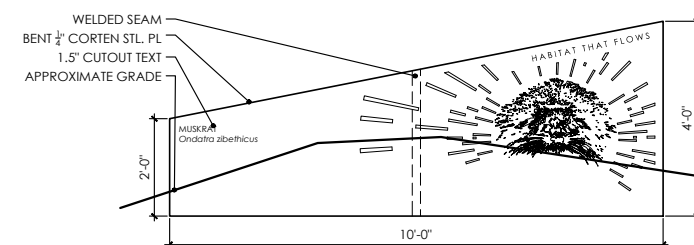
1 flow panels - section
 Scale: 1/4" = 1'-0"



1 flow panel 1
 Scale: 1/2" = 1'-0"



1 flow panel 2
 Scale: 1/2" = 1'-0"



1 flow panel 3
 Scale: 1/2" = 1'-0"

client

MINNEHAHA CREEK WATERSHED DISTRICT

project

WASSERMANN LAKE PRESERVE - INTERPRETIVE ELEMENTS

PID 650230600 &
 PID 650230700
 COUNTY ROAD 43
 VICTORIA, MN 55318

PROJECT NUMBER: 190006

certification

I HEREBY CERTIFY that this plan, specification or report was prepared by me or under my direct supervision and that I am a duly Licensed Professional Architect under the laws of the State of Minnesota.
 SIGNATURE: *James Fernandez*
 TYPED OR PRINTED NAME: JAMES JAMES FERNANDEZ
 DATE: 08/11/2020 REG. NO.: 45414

issue / revision

NO	DATE	ISSUE / REVISION

sheet title

DETAILS

THIS SQUARE APPEARS 1/2" x 1/2" ON FULL SIZE SHEETS.

DRAWN BY:
 CHECKED BY:

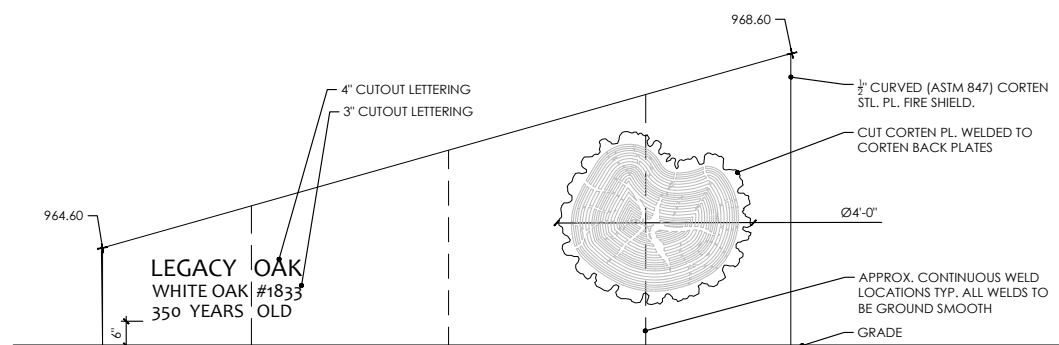
L3.5

7. LEGACY OAK FIRE RING

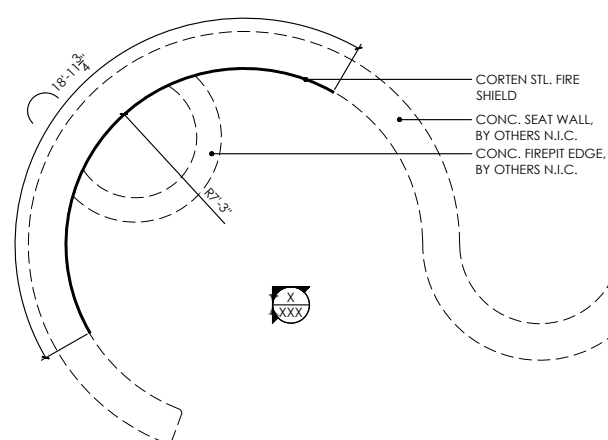
graphic features

- corten overlay represents the cross-cut section of one of the park's largest legacy oaks (still standing)
- text expresses species, tree tag # and age of tree





1 legacy oak - fire shield
 Scale: 1/2" = 1'-0"



1 legacy oak - fire shield
 Scale: 1/4" = 1'-0"

client

**MINNEHAHA CREEK
 WATERSHED DISTRICT**

project

**WASSERMANN LAKE
 PRESERVE -
 INTERPRETIVE ELEMENTS**

PID 650230600 &
 PID 650230700
 COUNTY ROAD 43
 VICTORIA, MN 55318

PROJECT NUMBER: 190006

certification

I HEREBY CERTIFY that this plan, specification or report was prepared by me or under my direct supervision and that I am a duly Licensed Professional Architect under the laws of the State of Minnesota.

**PRELIMINARY
 NOT FOR CONSTRUCTION**
 SIGNATURE: *[Signature]*
 TYPED OR PRINTED NAME: CARLOS JAMES FERNANDEZ
 DATE: xx/xx/xxxx REG. NO.: 45414

issue / revision

NO DATE ISSUE / REVISION

sheet title

DETAILS

THIS SQUARE APPEARS 1/2" x 1/2" ON FULL SIZE SHEETS.

DRAWN BY:
 CHECKED BY:

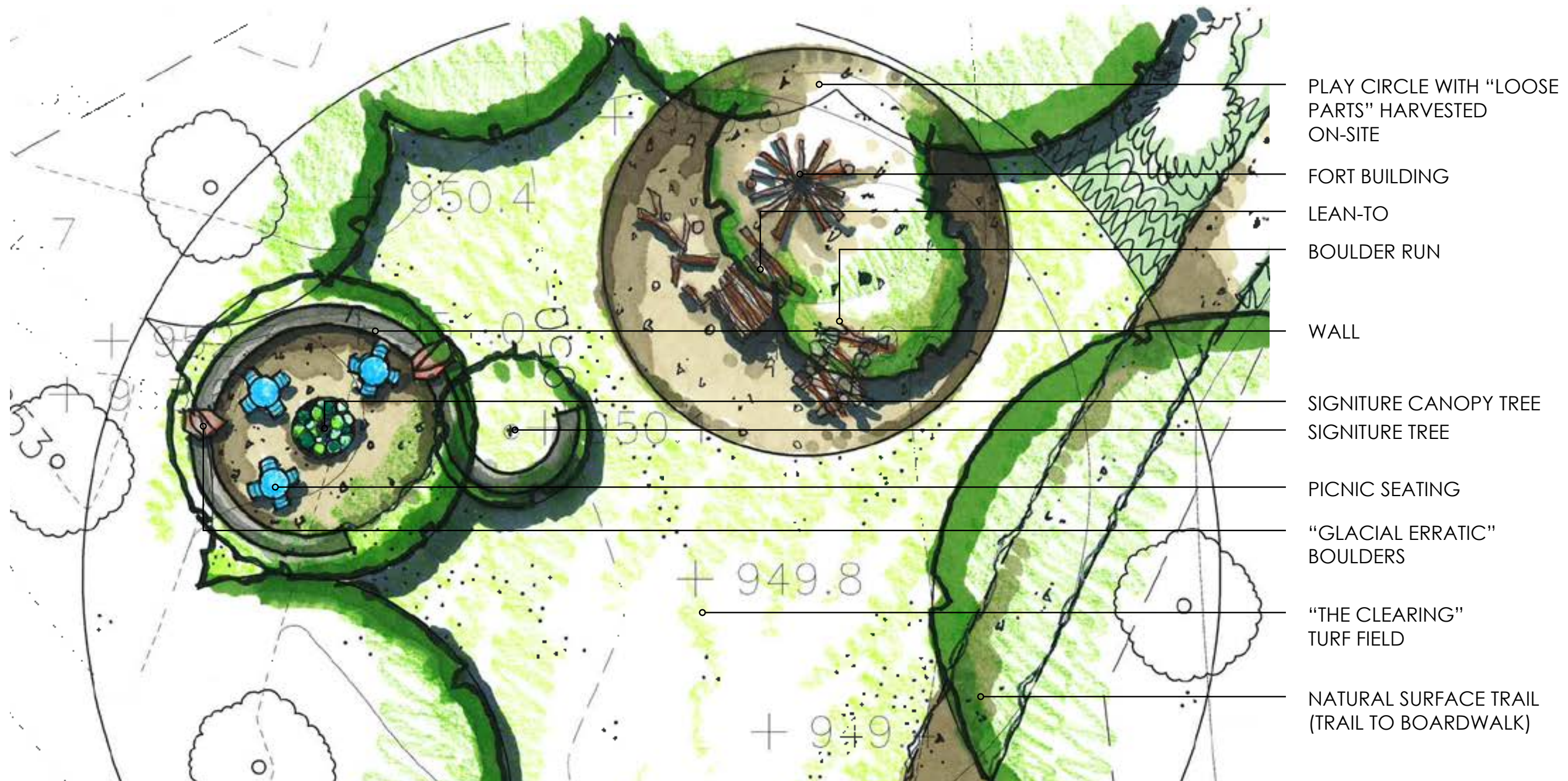
L3.6

8. WAVE SEAT WALLS CLEARING SPACE & FIRE RING

graphic features

- similar to the wave bench, this form reflects the flow of water or the movement of an oak root lifting from forest floor
- opportunities for integrativing direct interpretation on to concrete form

CLEARING GATHERING SPACE

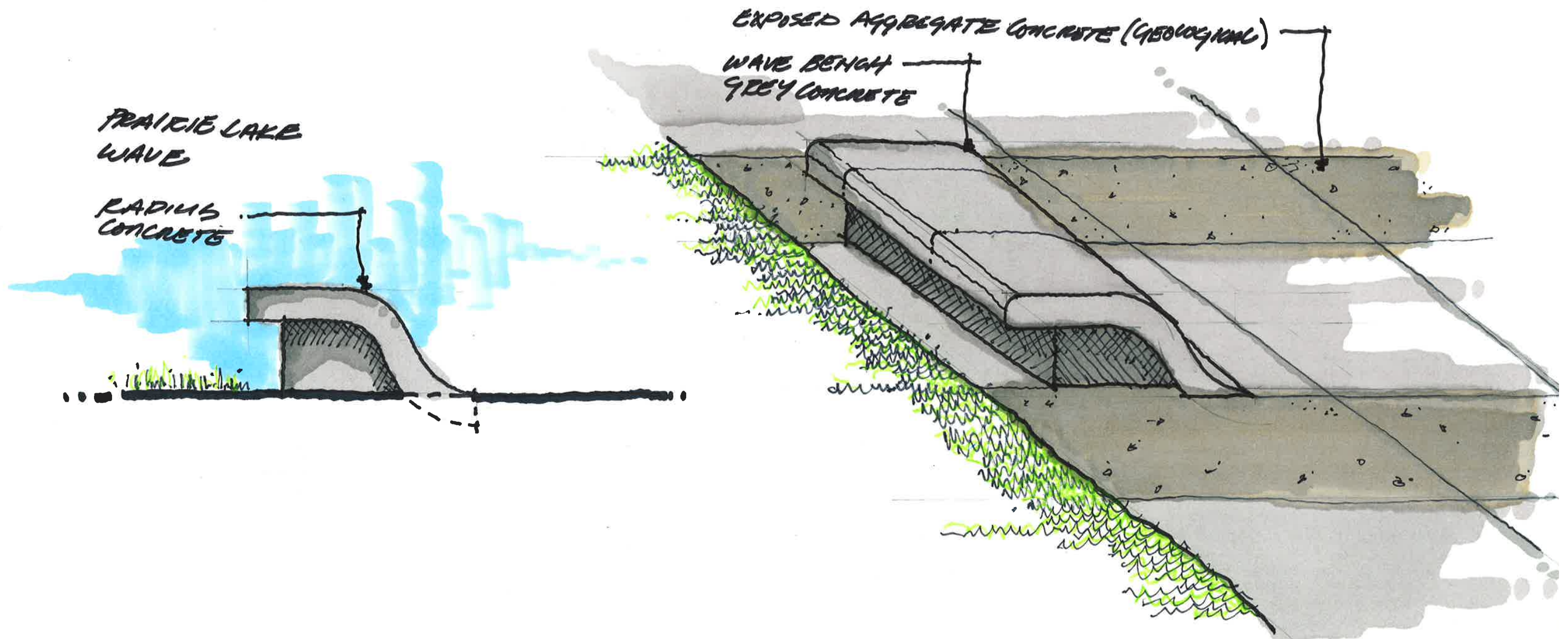


9. WAVE BENCH & EXPOSED AGGREGATE CONCRETE SHELTER PLAZA

WAVE BENCH

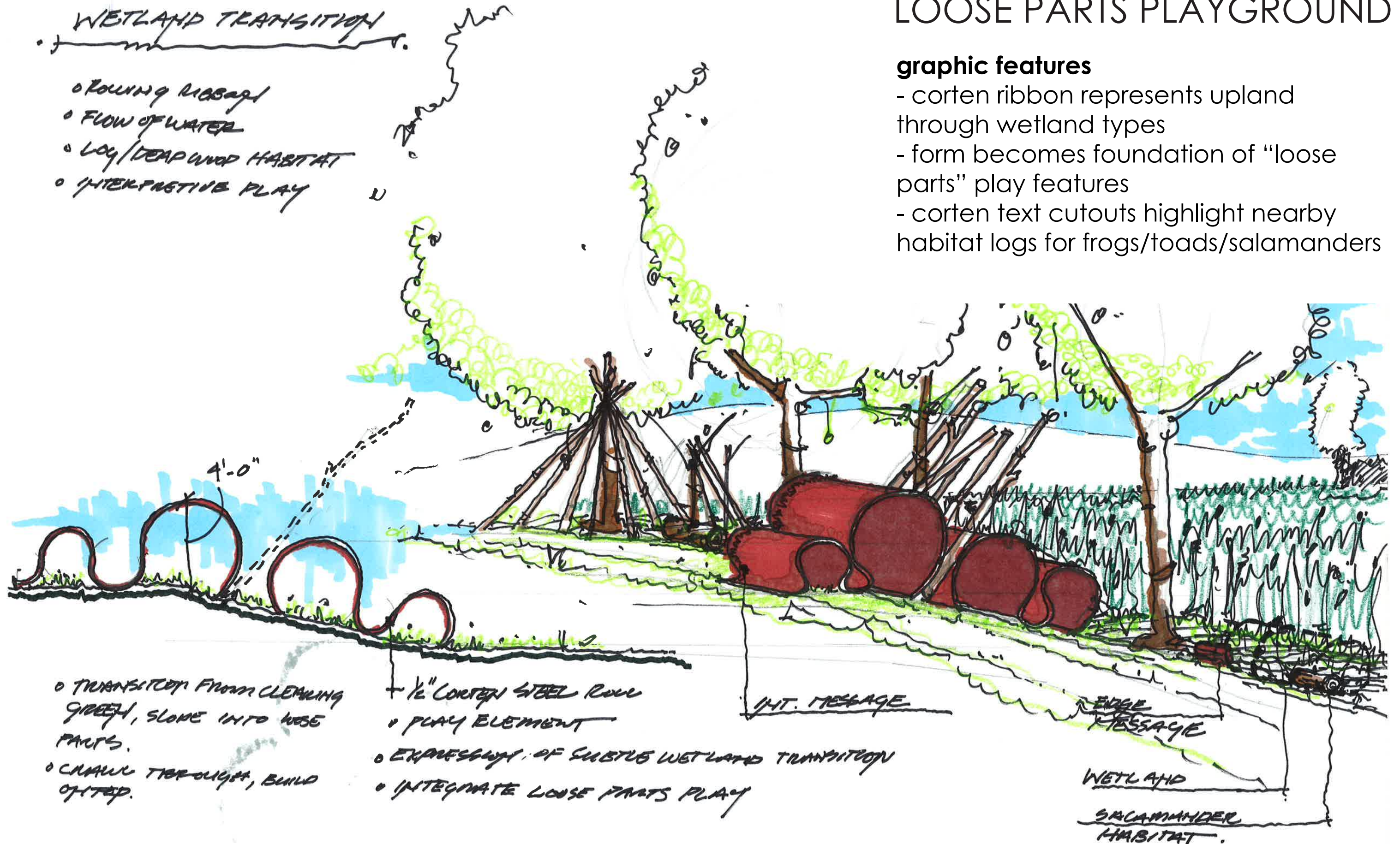
graphic features

- bench form reflects movement of water and interactions with river and lake beds
- exposed aggregate concrete recalls glacial impact of landscape





10. WETLAND TRANSITION LOOSE PARTS PLAYGROUND



graphic features

- corten ribbon represents upland through wetland types
- form becomes foundation of "loose parts" play features
- corten text cutouts highlight nearby habitat logs for frogs/toads/salamanders

- WETLAND TRANSITION
- o FLOWING RIBBON
 - o FLOW OF WATER
 - o LOG/DEADWOOD HABITAT
 - o INTERPRETIVE PLAY

- o TRANSITION FROM CLEARING GREEN, SLOPE INTO WISE PARTS.
- o CHANNEL THROUGH, BUILD ON TOP.

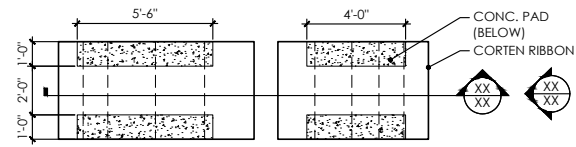
- o 1/2" CORTEN STEEL ROLL
- o PLAY ELEMENT
- o EXPRESSION OF SUBTLE WETLAND TRANSITION
- o INTEGRATE LOOSE PARTS PLAY

INT. MESSAGE

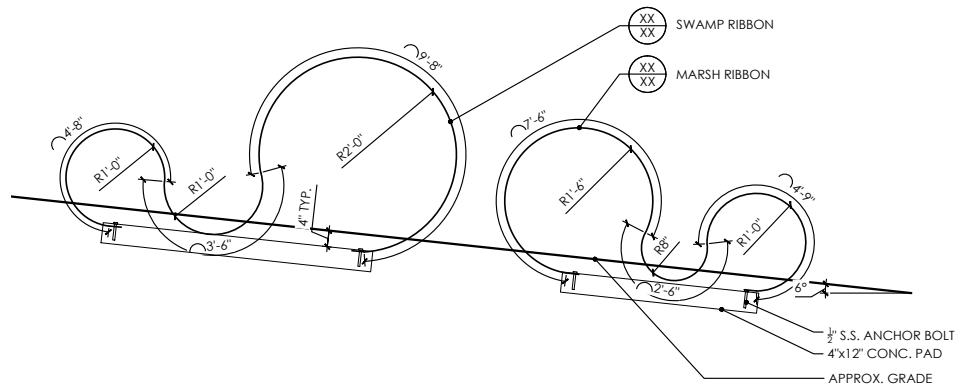
EDGE MESSAGE

WETLAND

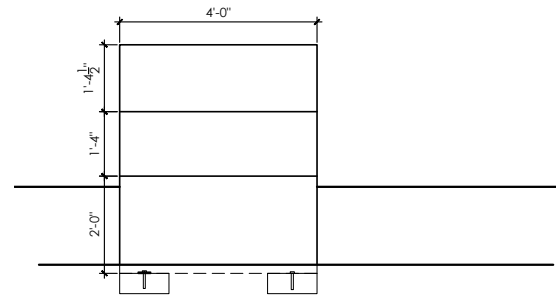
SALAMANDER HABITAT



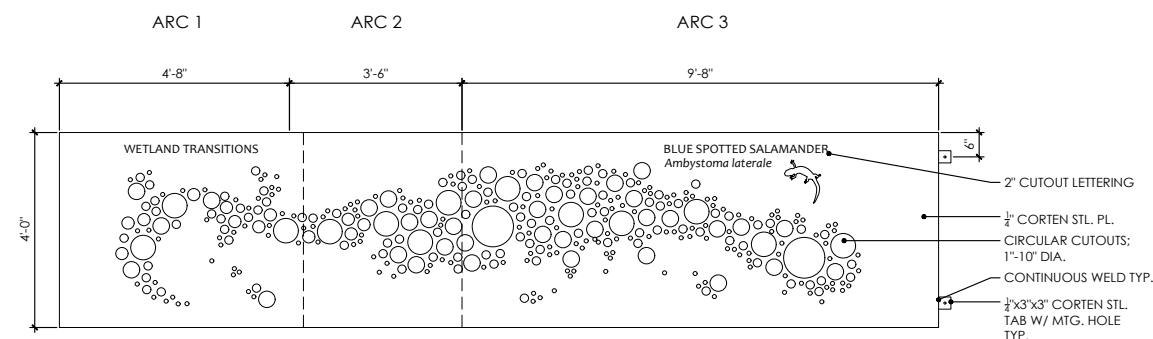
1 wetland ribbons - plan
 Scale: 1/4" = 1'-0"



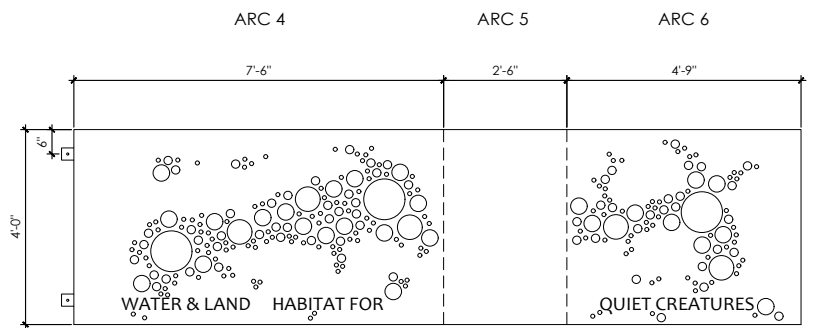
1 wetland ribbons - section
 Scale: 1/2" = 1'-0"



1 wetland ribbons elev.
 Scale: 1/2" = 1'-0"



1 swamp ribbon
 Scale: 1/2" = 1'-0"



1 marsh ribbon
 Scale: 1/2" = 1'-0"

client

MINNEHAHA CREEK WATERSHED DISTRICT

project

WASSERMANN LAKE PRESERVE - INTERPRETIVE ELEMENTS

PID 650230600 &
 PID 650230700
 COUNTY ROAD 43
 VICTORIA, MN 55318

PROJECT NUMBER: 190006

certification

I HEREBY CERTIFY that this plan, specification or report was prepared by me or under my direct supervision and that I am a duly licensed Professional Architect under the laws of the State of Minnesota.
PRELIMINARY NOT FOR CONSTRUCTION
 SIGNATURE: *James Fernandez*
 TYPED OR PRINTED NAME: JAMES JAMES FERNANDEZ
 DATE: xx/xx/xx REG. NO.: 45414

issue / revision

NO	DATE	ISSUE / REVISION

sheet title

DETAILS

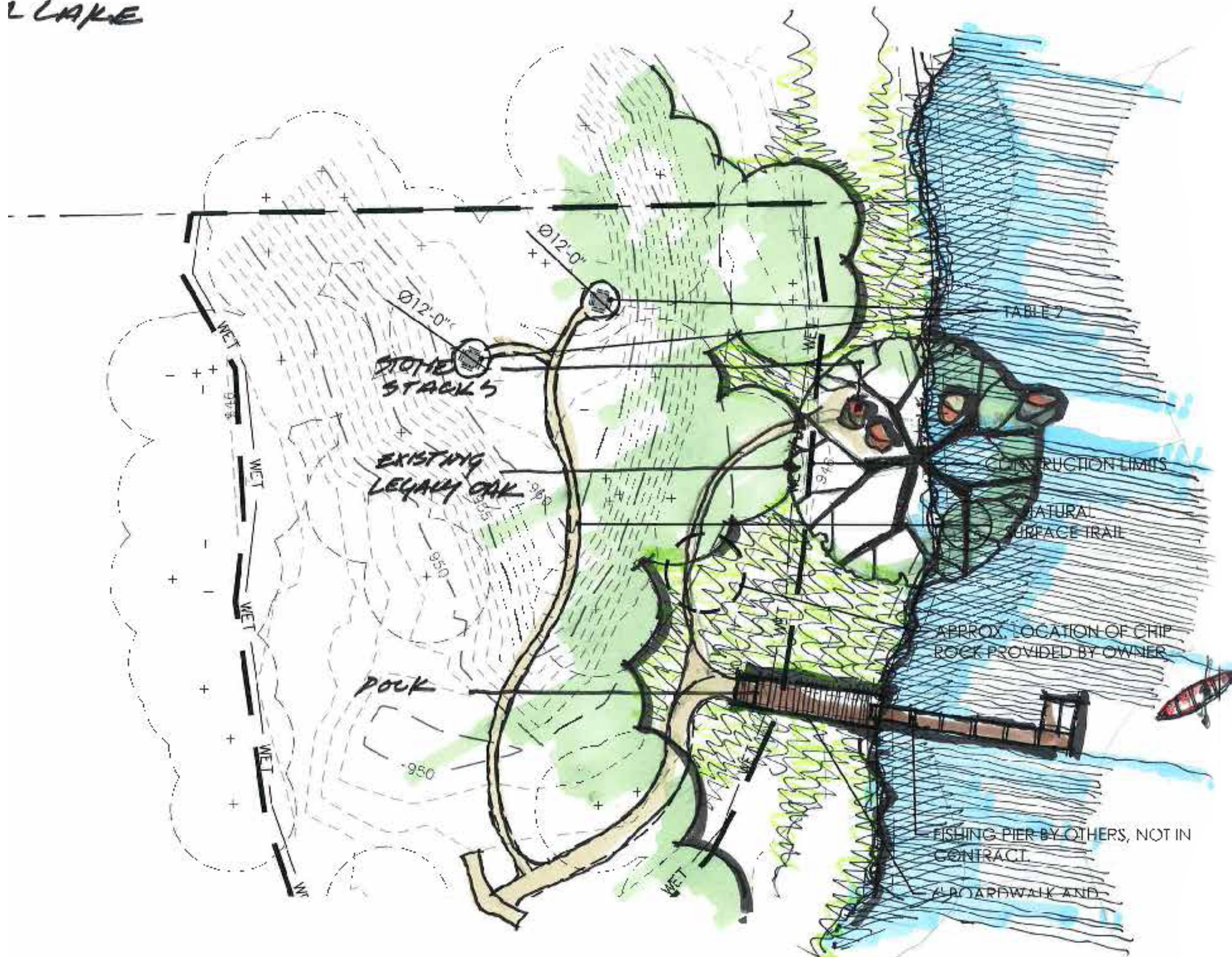
THIS SQUARE APPEARS 1/2' x 1/2' ON FULL SIZE SHEETS.

DRAWN BY:
 CHECKED BY:

L3.7

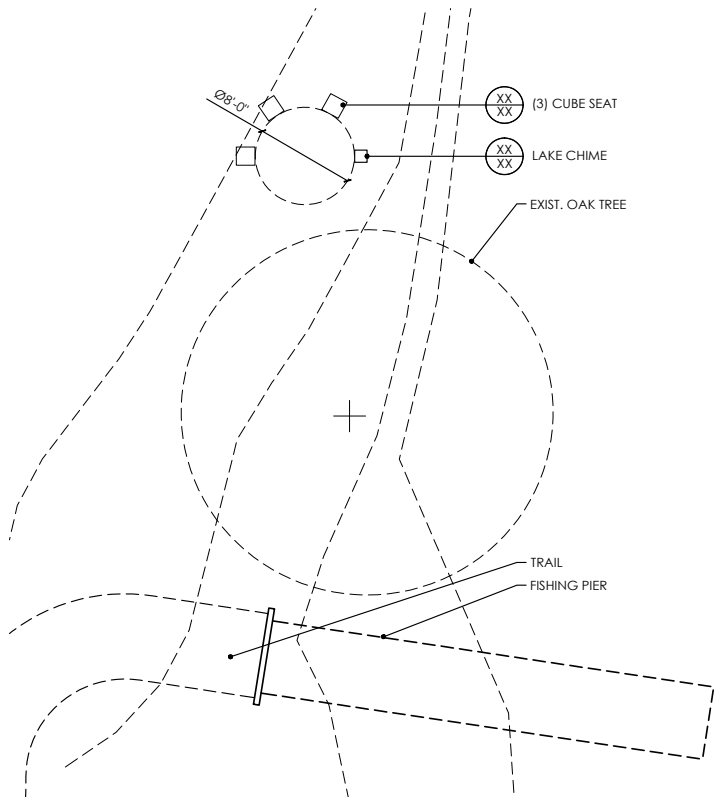
L LAKE

11. LAKE CHIME PLAN

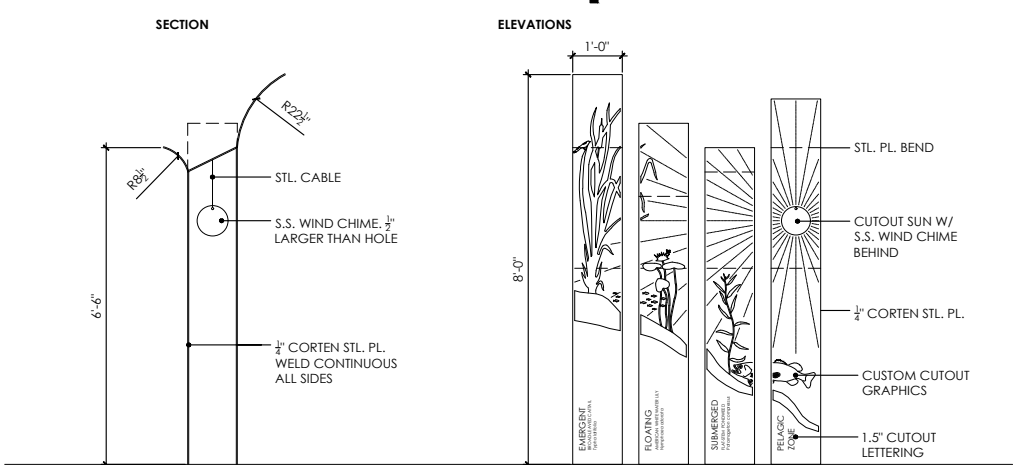
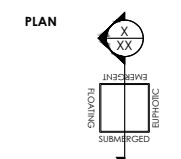


graphic features

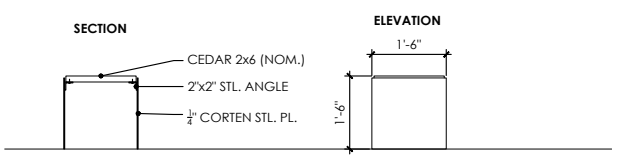
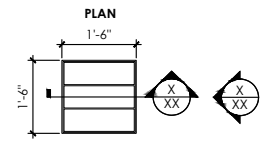
- located at the end of the park walking loop, 3 corten cubes create a small seating grove on the edge of the lake and under the canopy of a legacy oak
- corten chimney depicts the distinct vegetation types found in the lake shore littoral zone and their importance to supporting aquatic and terrestrial wildlife.
- wind chime sound encourages off-trail exploration on the island



1 lake chime - plan
 Scale: 1/8" = 1'-0"



1 lake chime
 Scale: 1/2" = 1'-0"



1 cube seat
 Scale: 1/2" = 1'-0"

client

**MINNEHAHA CREEK
 WATERSHED DISTRICT**

project

**WASSERMANN LAKE
 PRESERVE -
 INTERPRETIVE ELEMENTS**

PID 650230600 &
 PID 650230700
 COUNTY ROAD 43
 VICTORIA, MN 55318

PROJECT NUMBER: 190006

certification

I HEREBY CERTIFY that this plan, specification or report was prepared by me or under my direct supervision and that I am a duly Licensed Professional Architect under the laws of the State of Minnesota.
 SIGNATURE: *[Signature]*
 TYPED OR PRINTED NAME: CARLOS JAMES FERNANDEZ
 DATE: 02/14/2023 REG. NO.: 45414

issue / revision

NO DATE ISSUE / REVISION

sheet title

DETAILS

THIS SQUARE APPEARS 1/2" x 1/2" ON FULL SIZE SHEETS.

DRAWN BY:
 CHECKED BY:

L3.8