



MEMORANDUM

To: MCWD Board of Managers
From: Janna Jonely, Project and Land Management Technician
Date: June 26, 2018
Re: Partnership Opportunities in Edina (Pamela Park & Mill Pond)

Purpose:

In 2014, the District and City of Edina executed a Memorandum of Understanding (MOU) in which the District and the City expressed a “mutual commitment to integrating their work and aligning resources to make wise investments in infrastructure and to protect and improve natural systems in order to develop vibrant, healthy communities”.

Under the framework of this MOU, staff will facilitate a discussion at the June 28, 2018 Board Meeting regarding two possible partnership opportunities between the District and City of Edina:

1. Maintenance of stormwater facilities in Pamela Park; and
2. Streambank restoration along the Mill Pond shoreline

Background:

Pamela Park Water Quality Improvement Project

In August of 2000, the District executed a cooperative agreement with the City of Edina for the Pamela Park Water Quality Improvement Project. That project resulted in a variety of water quality features including the construction of three stormwater ponds north of Pamela Lake (see map in Attachment 1). The terms of the agreement state that the first maintenance dredging of these stormwater ponds is the responsibility of the City of Edina, while all subsequent dredging work would be the responsibility of the District.

Across the watershed, the District has constructed 26 stormwater ponds and has various operations and maintenance obligations over those ponds. The District has established a policy to cyclically investigate and maintain those 26 stormwater ponds and does this by annually inspecting approximately a third of the ponds for sediment accumulation and wet volume loss. The District’s policy for maintenance dredging of a stormwater pond is triggered when a pond reaches 50% reduction in wet volume.

We collaborate with public and private partners to protect and improve land and water for current and future generations.

In May 2018, the Board approved a contract with Wenck to perform sediment surveys on 11 stormwater ponds. The results of those sediment surveys showed that the Pamela Park Pond 1 has a 66% reduction in wet volume and Bde Maka Ska (SW Calhoun) has a 47% reduction in wet volume.

Based on Wenck's survey results, in the coming month staff plans to recommend to the Board that the District proceed with dredging the Bde Maka Ska stormwater pond (SW Calhoun) over the winter of 2018/2019. District staff also conveyed the sediment survey results for Pamela Park Pond 1 to the City of Edina and recommended that the City proceed with dredging given the City's responsibility for performing the first maintenance dredging of this facility.

Upon receiving the District's dredging recommendation, the City of Edina inquired as to whether the District itself would be maintaining any additional stormwater ponds over the winter of 2018/2019. After learning that the District plans to dredge the Bde Maka Ska stormwater pond over the winter of 2018/2019 the City of Edina requested the District consider a partnership whereby the City of Edina would fully fund the District's design and construction oversight of the Pamela Park Pond 1 maintenance.

District staff have evaluated the City's request to assess the cost-benefit of the District overseeing the dredging of the Pamela Park Pond 1. Staff have considered that by leading the work through a reimbursement agreement: the necessary maintenance work will occur on a shorter time horizon than if the City programs the work; the dredging would follow existing standards and procedures established by the District; an economy of scale may be realized by pairing the work with the Bde Maka Ska stormwater pond project; the District would gain a detailed level of understanding regarding the maintenance needs of the facility for which it will be required to perform all subsequent maintenance; the only direct cost to MCWD would be staff time, for which the City is also willing to provide reimbursement.

Furthermore, the proposed partnership presents an immediate opportunity to comprehensively address broader maintenance needs within the Pamela Park Water Quality Improvement Project as a whole. Current needs include reconstruction and repair of a failing outfall, and establishing a comprehensive vegetation management plan for Pamela Park consistent with MCWD goals and standards.

In total, the proposed partnership represents an opportunity to build on existing partnerships with the City of Edina to perform necessary stormwater facility maintenance work, while developing a comprehensive plan for ongoing maintenance and operations and reinvesting in a site that is linked to more recent and planned work at Reach 14 streambank improvements and Arden Park.

Pending Board of Managers concurrence regarding the opportunity, District staff will advance the discussion with City of Edina staff, and begin outlining basic terms of a draft cooperative agreement for future consideration.

Mill Pond Shoreline Stabilization Project

The City of Edina is currently planning a series of infrastructure improvements, for which they have issued a request for professional services. Wenck Associates has responded to the request for services and has been identified as the preferred consultant. All but one of these projects are located outside of the Minnehaha Creek Watershed District. Pursuant to MCWD's contract with Wenck Associates, which

We collaborate with public and private partners to protect and improve land and water for current and future generations.

contains conflict of interest provisions, Wenck may not represent another governmental jurisdiction within MCWD's jurisdiction without written approval of the Administrator.

When evaluating requests to provide permissions for Wenck to work for other governmental entities, the Administrator generally considers the following:

1. Is the proposed work focused on natural resource improvements, and aligned with MCWD's mission and strategic priorities?
2. Does the involvement of Wenck and the District provide for potentially better outcomes than not being involved?
3. May the involvement of Wenck with another governmental unit potentially compromise District relationships?

In this instance, the City of Edina is requesting the involvement of Wenck Associates in the design and oversight of approximately 200' of streambank stabilization on Minnehaha Creek on Sunnyslope Road within the Mill Pond Area (see map in Attachment 2).

In evaluating the request the Administrator has found that the project satisfies the minimum threshold considerations, as the project purpose is to stabilize and enhance Minnehaha Creek streambank, that the project would benefit from Wenck's experience with similar projects in the vicinity (Reach 14 and Arden Park), and that the project provides an opportunity to continue investing in the District's working relationship with the City of Edina.

Pending Board of Managers concurrence, the District Administrator is recommending approval of the City of Edina's request.

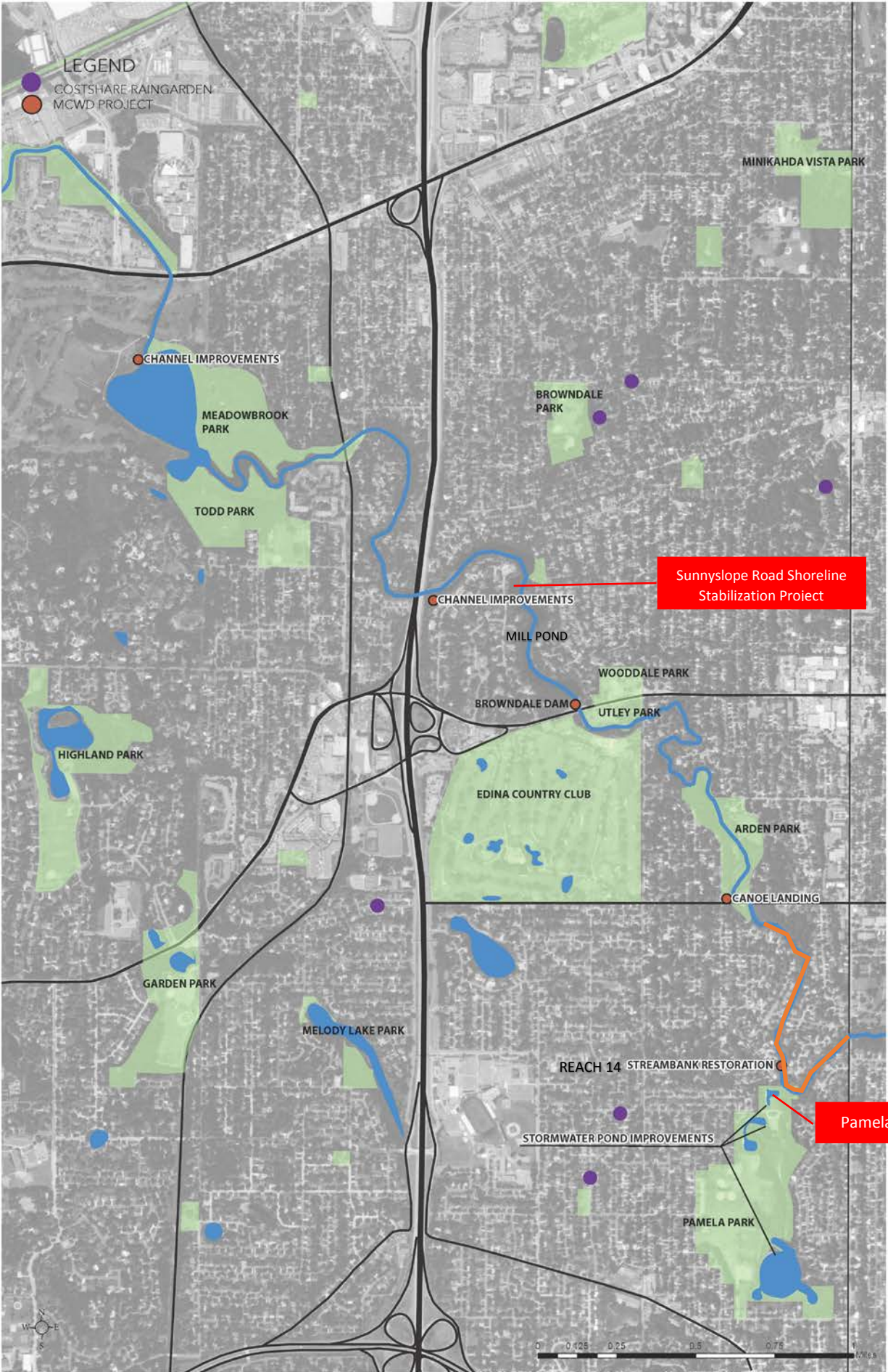
Next Steps:

District staff will provide a brief overview of these opportunities, and seek feedback from the Board of Managers at the June 28, 2018 Meeting.

Attachments:

- Attachment 1: Edina Project Map
- Attachment 2: Sunnyslope Road Shoreline Stabilization Project Map

We collaborate with public and private partners to protect and improve land and water for current and future generations.





Sunnyslope Rd W

Sunnyslope Rd E

Sunnyslope Rd E

Woodhill Way

Mill Pond

Brownndale Park

Brownndale Ave

Brownndale Ave

Brownndale Ave