



**Title:** Wassermann Lake Park Interpretive Signage Plan

**Prepared by:** Name: Anna Brown  
Phone: 952-641-4522  
abrown@minnehahacreek.org

**Purpose:**

At the April 9, 2020 Operation and Programs Committee (OPC) meeting, staff will provide an updated proposal, content strategy, and implementation recommendation for site interpretation for the Wassermann Lake Preserve project.

**Background:**

Beginning in 2017, Minnehaha Creek Watershed District (MCWD) and City of Victoria staff have been engaged in a collaborative effort to develop and implement a park and natural resource restoration project on an undeveloped shoreline site on Lake Wassermann. Since August 2019, staff have worked through final design and construction document development with Aune Fernandez Landscape Architects (AFLA). On February 13, 2020, the MCWD Board of Managers awarded a construction contract for the project to LinnCo, Inc. (LinnCo), and construction is expected to commence in mid-April and conclude in fall 2020.

At the January 9, 2020 Operations and Programs Committee meeting, staff presented the preliminary site interpretation proposal for the Wassermann Lake Preserve. The proposal includes a central signage “hub”, consisting of a central interpretive structure with text, narrative and imagery. Other interpretive interventions would be located at priority locations throughout the site and will be sculptural forms of interpretation, less reliant on text and narrative. The design team estimated that, to implement the full interpretive signage strategy, materials and installation would be approximately \$100,000. The committee concurred with the direction of the interpretive signage and directed staff to continue to develop the concepts, design scope and cost proposal for this interpretive approach.

**Summary:**

Since the January 9, 2020 meeting, staff have been working with AFLA to further develop the interpretive proposal and cost estimates for its implementation. At the April 9, 2020 Operations and Programs Committee, staff will present the following information:

- An updated interpretive plan
- Content strategy for the hub signage
- Design and construction cost estimates

The draft opinion of probable cost for this signage proposal is \$107,500. This includes the entry sign, three hub signs, and five interpretive features installed throughout the site. A sixth interpretive feature will be carried through design and bid, but will only be advanced if the bid prices come in competitive enough to implement that feature without further adding to the interpretive budget. AFLA recently bid a similar signage concept and received favorable bids, suggesting we may be able to implement more within this budget.

The design cost for interpretive signage is \$18,500. This includes the design contract with AFLA, for which staff is seeking approval at the April 9, 2020 Board Meeting, for a cost of \$12,500. The additional design costs would be content development with Dogtooth Designs, who have developed most of the District’s signage, for a cost of \$6,000. The City has budgeted approximately \$36,000 for site interpretation, to be applied to design, fabrication, and installation. This leaves the maximum exposure for the District, if all elements of this proposal are carried forth, at \$90,000 for design, fabrication, and installation.

Following the committee meeting, the MCWD Board of Managers will consider the approval of the design scope with AFLA, under which they will complete design, facilitate the bid process, and oversee the installation of these interpretive elements. The installation will be conducted by LinnCo as a component of their preserve construction contract.

**Supporting documents:**

- Interpretive Lake Preserve Interpretive Program Concepts

# WASSERMANN LAKE PRESERVE INTERPRETIVE PROGRAM CONCEPTS

04.9.2020



**MINNEHAHA CREEK**  
WATERSHED DISTRICT  
QUALITY OF WATER, QUALITY OF LIFE



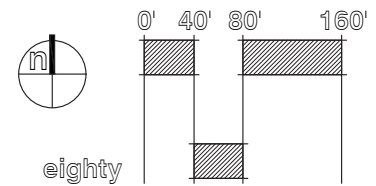
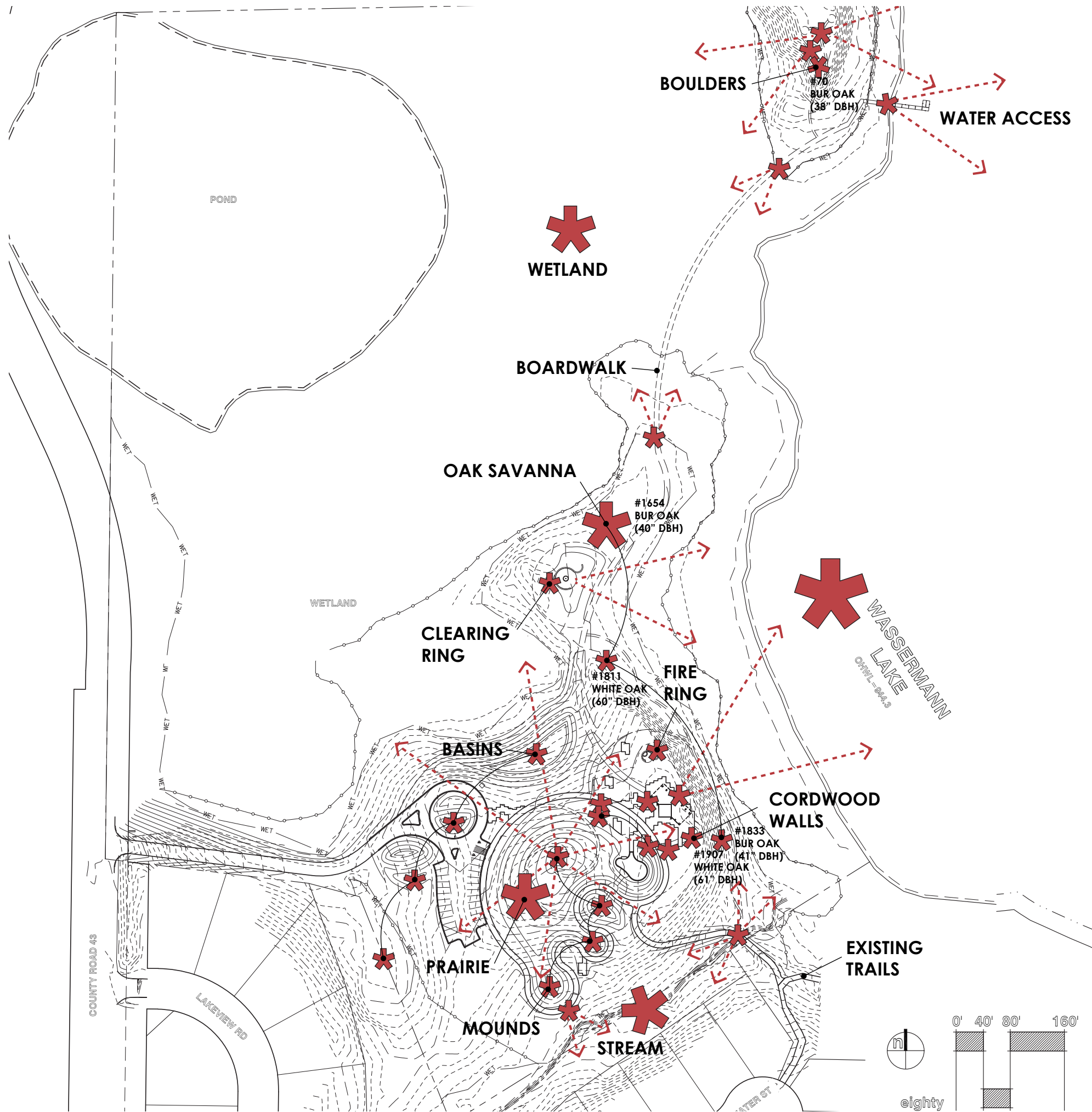
# INTERPRETIVE ANALYSIS AND KEY THEMES

**\* interpretive resources**  
drawing from landscape resources and integrated design elements

- vistas
- lake
- wetland
- stream
- oak savanna
- mounds
- bio-filtration basins
- cord-wood walls
- wave benches
- fire ring
- clearing ring
- exposed aggregate concrete
- natural trails
- snags and down limbs

**■ storylines**  
drawing on multiple stories and themes

- "city of lakes and parks"
- mcwd interventions/ 6 mi creek
- natural resource management
- landscape restoration, upland hydrology
- material reuse
- water story/ headwater protection
- people and play
- partnership
- watershed extents



# INTERPRETIVE NARRATIVE AND ORGANIZATION

## central narrative

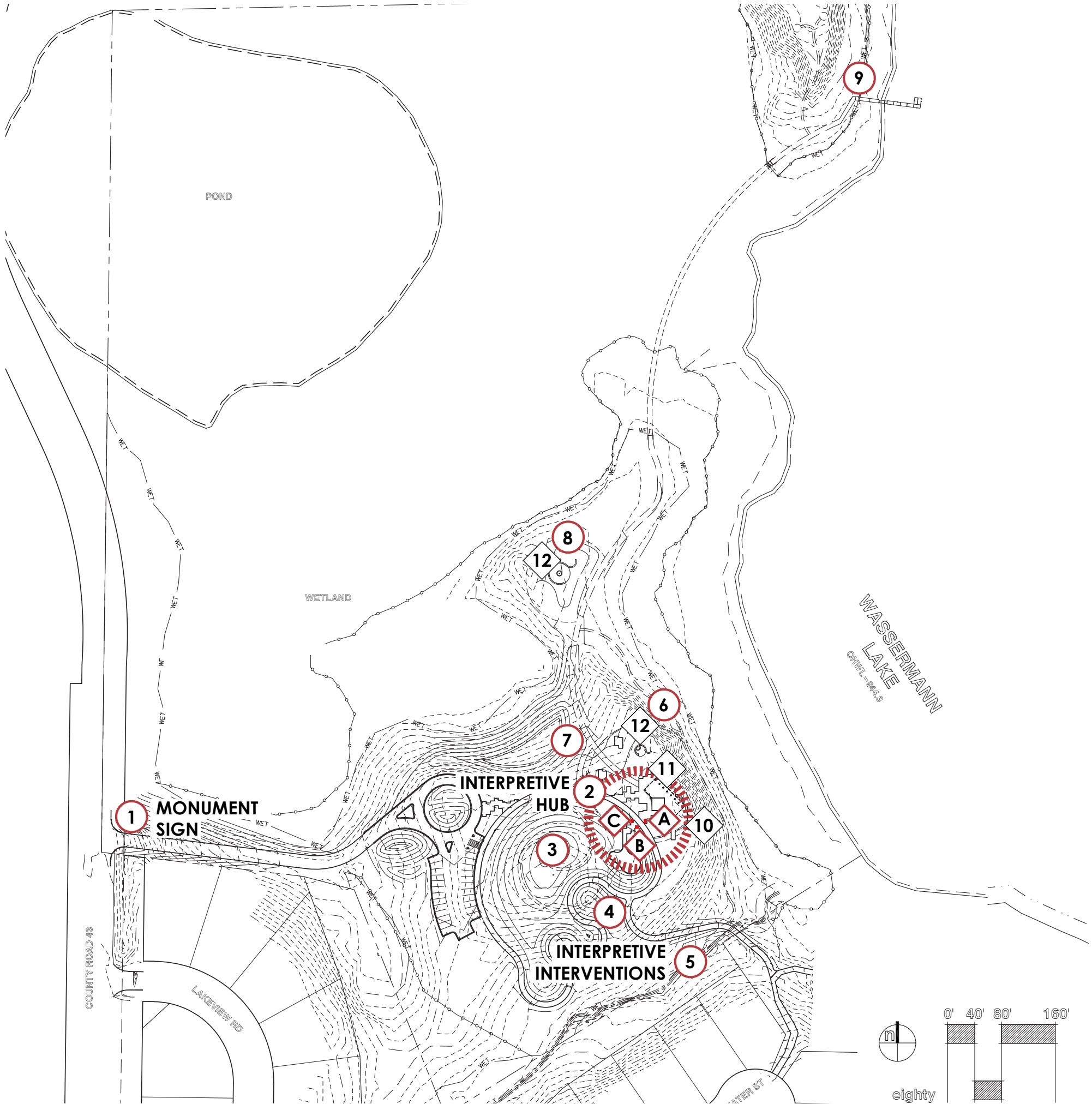
“what we do to the land we do to water”

## interpretive interventions

- 1 - monument sign with oak silhouette
- 2 - interpretive hub
  - sign a: “ wassermann lake preserve”
  - sign b: “the watershed”
  - sign c: “building a preserve”
- 3 - watershed walk
- 4 - prairie to forest
- 5 - flow of water
- 6 - legacy oak
- 7 - water management
- 8 - wetland transition
- 9 - lake bounce

## interpretive detailing

- 10 - cordwood walls
- 11 - wave benches & exposed aggregate concrete
- 12 - wave seat walls



# INTERPRETIVE NARRATIVE AND ORGANIZATION

## central narrative

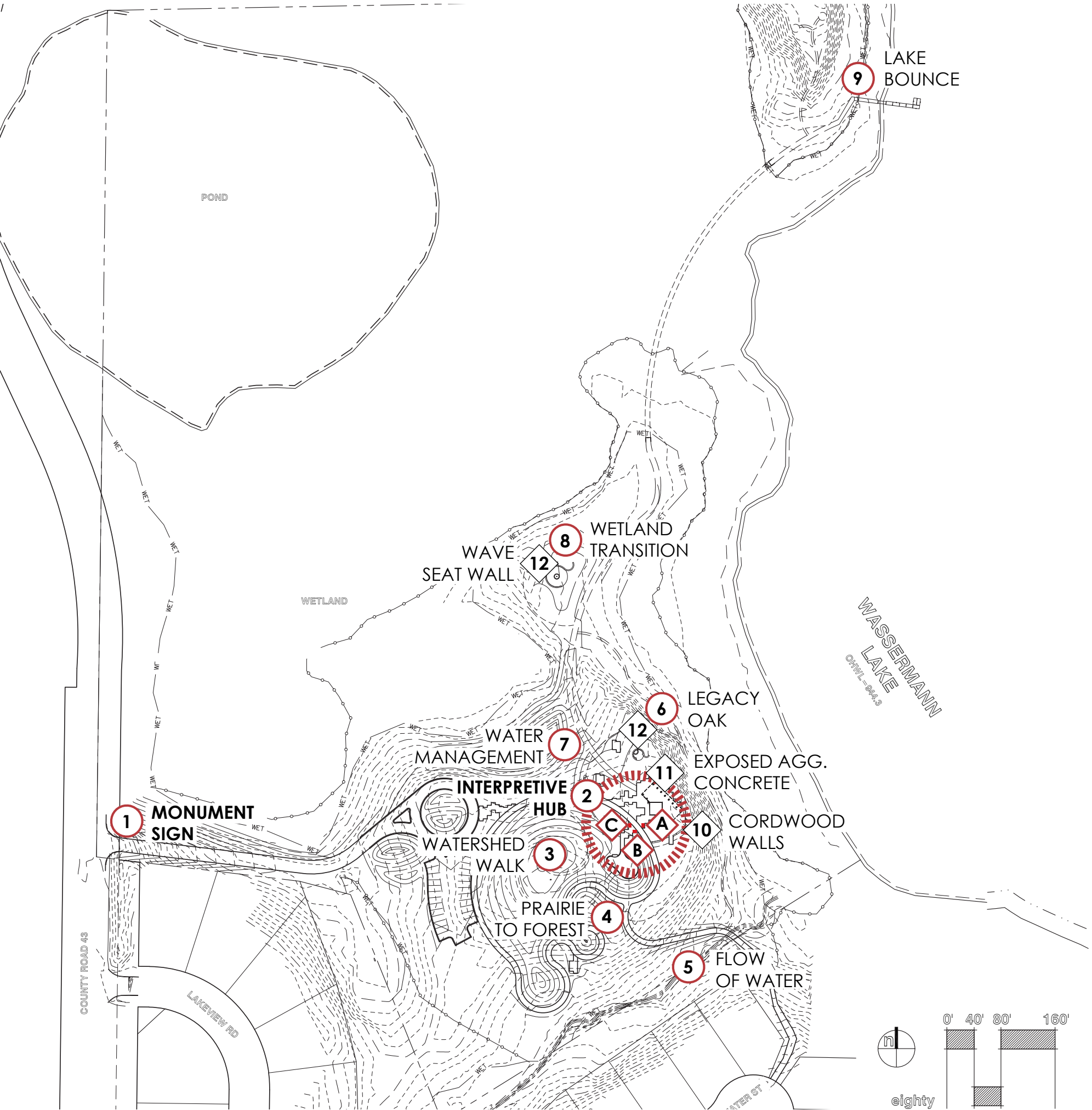
“what we do to the land we do to water”

## interpretive interventions

- 1 - monument sign with oak silhouette
- 2 - interpretive hub
  - sign a: “wassermann lake preserve”
  - sign b: “the watershed”
  - sign c: “building a preserve”
- 3 - watershed walk
- 4 - prairie to forest
- 5 - flow of water
- 6 - legacy oak
- 7 - water management
- 8 - wetland transition
- 9 - lake bounce

## interpretive detailing

- 10 - cordwood walls
- 11 - wave benches & exposed aggregate concrete
- 12 - wave seat walls



# WASSERMANN MONUMENT SIGN

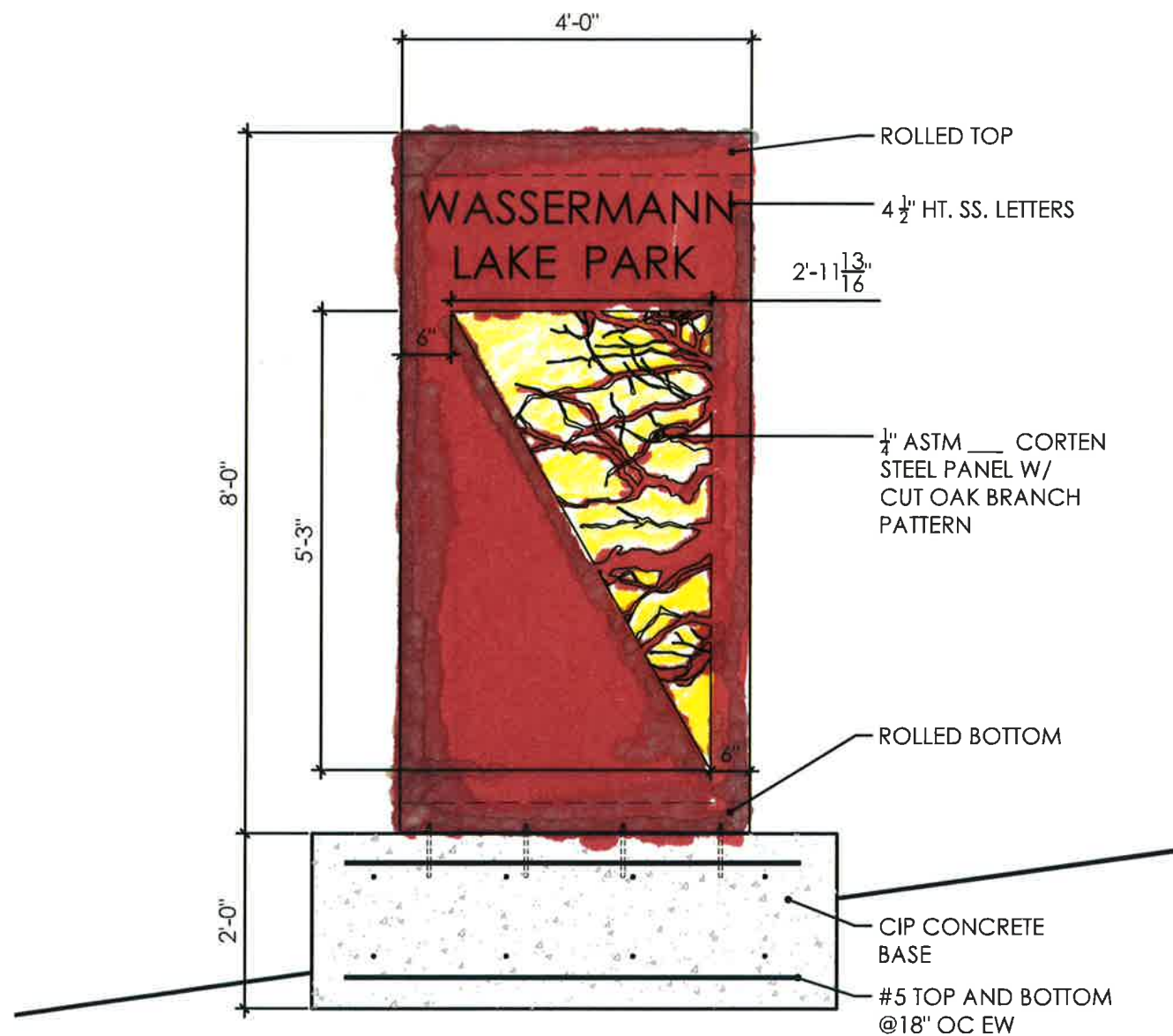
AT THE OAK  
- BACK LIT

## 1. OAK SILHOUETTE MONUMENT SIGN

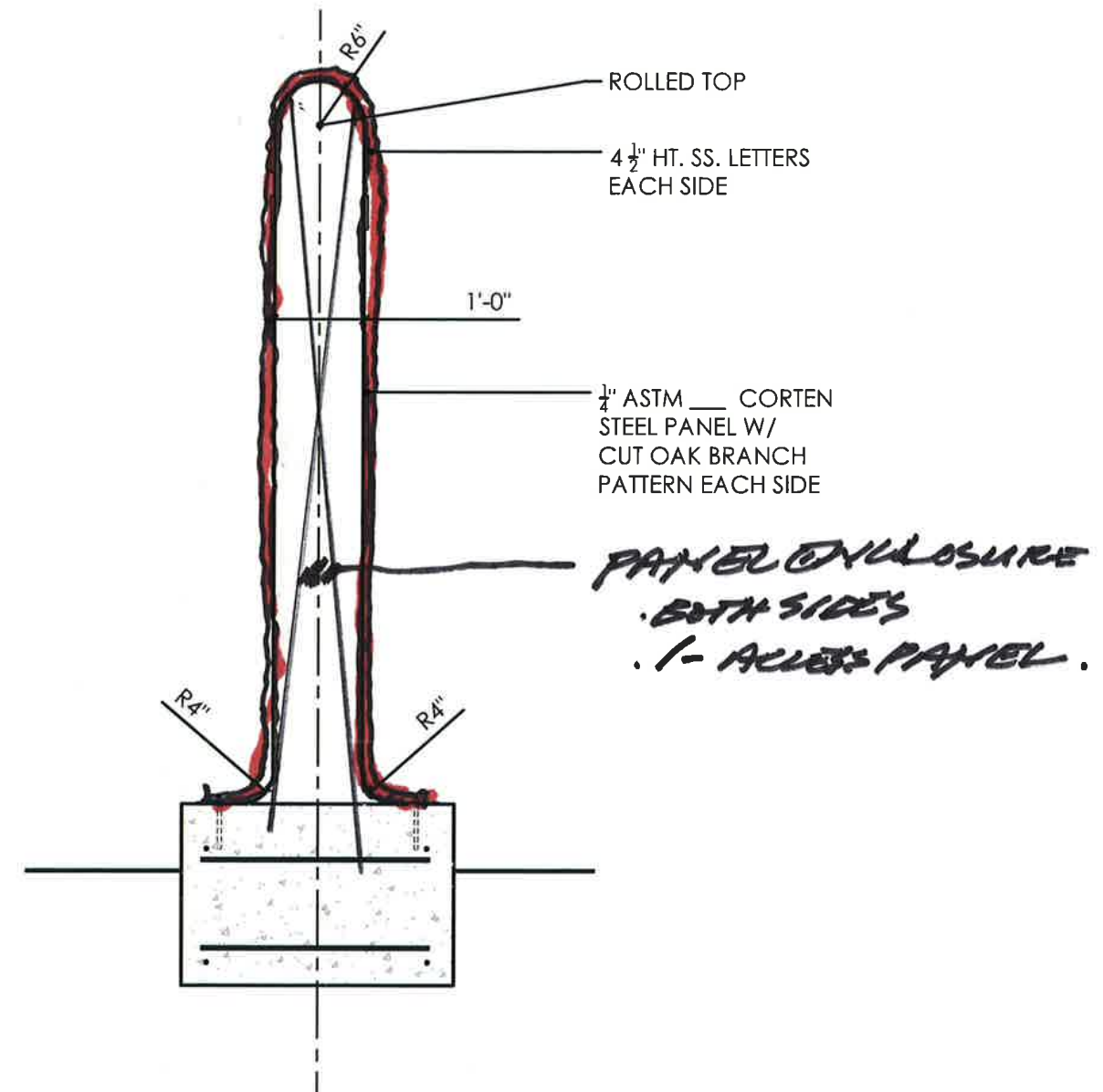
### graphic features

- park monument sign is a key identity marker along hwy 43
- back-lit corten cut represents oak silhouette and provides a unique expression of the oak savanna

NORTH ELEVATION



SIDE ELEVATION



WASSERMANN  
LAKE PRESERVE

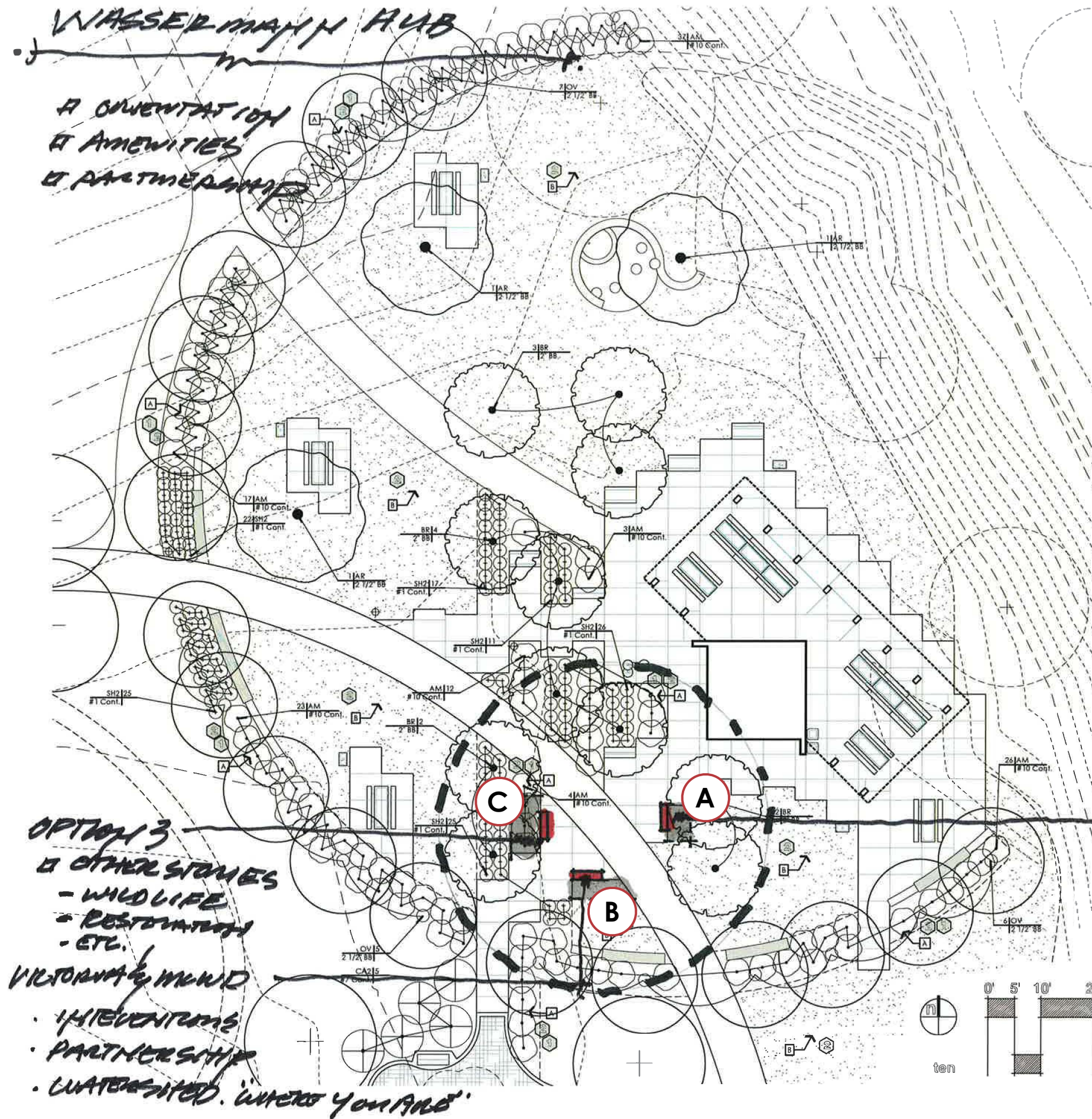




WASSERMANN  
LAKE PARK



## 2. INTERPRETIVE HUB PLAN



### sign a: wassermann lake preserve

#### **side 1: landscape mosaic**

- park map with story of the preserve's natural resources and habitats including oak savanna, prairies, meadows, wetland, stream, lake and wildlife

#### **side 2: interpretive gallery**

- gallery map with short descriptions of the underlying themes of each interpretive intervention

### sign b: the watershed

#### **side 1: the larger watershed**

- map of MCW that highlights how water moves throughout the landscape, important watershed moments and the location of the preserve

#### **side 2: stories of six mile creek**

- story of restoring the 6 mi creek sub-watershed and the partnerships that facilitate this work

### sign c: building a preserve

#### **side 1: history**

- story of the history of vegetative cover on the preserve and regional drivers of change that have shifted plant communities

#### **side 2: restoration**

- story of restoring the preserve, the habitat and water quality benefits it creates and the recreational/experiential value of the preserve for visitors

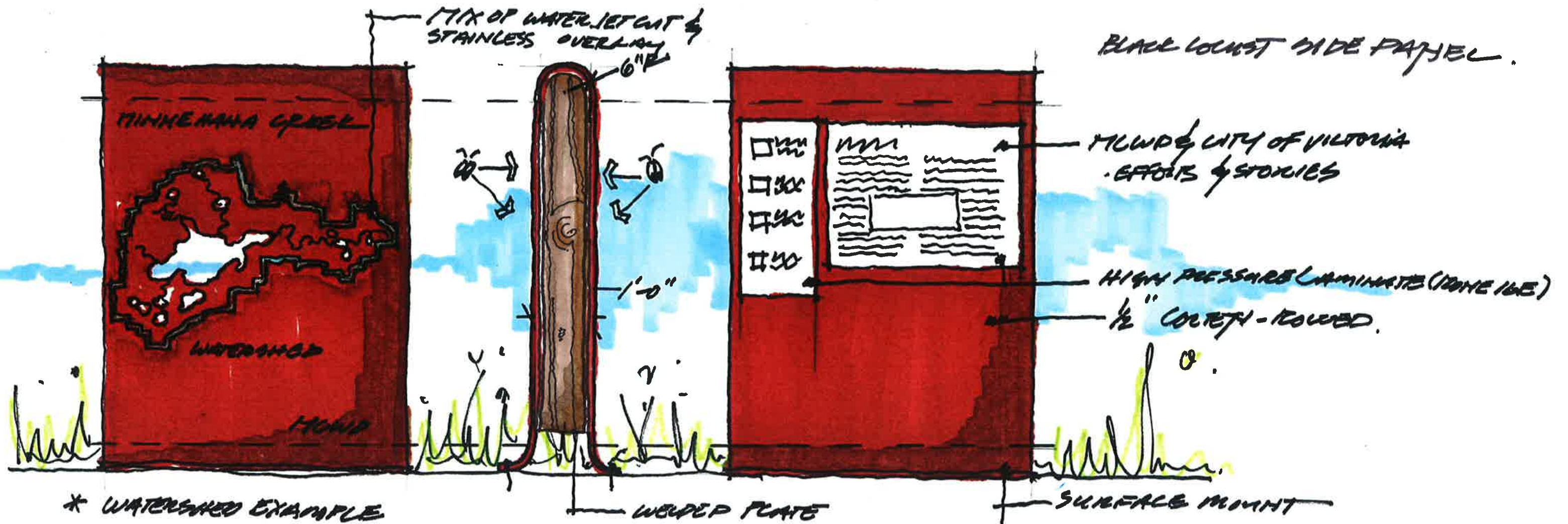
## 2. INTERPRETIVE HUB TYPICAL SIGN

### graphic features

- expressive frames cutout from corten
- colorful custom graphic inserts with interpretive images and stories that illustrate the narrative of each panel
- wood side panels match park shelter

### HUB: PANEL DESIGN

- 2 OR 3 PANELS - 2 SIDED
- RIBBON SIGN
- FLOW



### WASSERMANN LAKE PRESERVE

**HABITATS IN THE PARK**

- COLE VALLEY
- MEADOW
- WETLAND
- SHRUB
- ACE

**INTERPRETIVE GALAXY**

1. WETLAND
2. MEADOW
3. COLE VALLEY
4. SHRUB
5. ACE

### MINNEHAHA CREEK WATERSHED

**WATERSHED FEATURES**

- Watershed
- Watershed
- Watershed
- Watershed
- Watershed

### VICTORIA - CITY OF LAKES & PARKS

**VICTORIA FEATURES**

- 1. WETLAND
- 2. MEADOW
- 3. COLE VALLEY
- 4. SHRUB
- 5. ACE



WASSERMANN PARK





VICTORIA - CITY OF LAKES & PARKS



VICTORIA FEATURES

- Victoria Harbour
- Inner Harbour
- English Bay
- Beacon Hill Park
- Garry Point Park
- Centennial Park
- Metchosin Park
- Oak Bay Park
- Victoria Park
- Westside Park
- Victoria Park
- Victoria Park

RECOMMENDED



WASSERMANN LAKE PRESERVE

# WASSERMANN LAKE PRESERVE

## HABITATS IN THE PARK

- OAK SAVANNA**  
This is a flat to a gently sloping landscape with scattered oaks and a dense canopy of tall grasses and wildflowers.
- PRAIRIE**  
This is a flat to a gently sloping landscape with a dense canopy of tall grasses and wildflowers.
- WETLAND**  
This is a flat to a gently sloping landscape with a dense canopy of tall grasses and wildflowers.
- STREAM**  
This is a narrow waterway that flows through the park.
- LAKE**  
This is a large body of water that is a central feature of the park.

## INTERPRETIVE GALLERY

- 0. INTERPRETIVE HUB (YOU ARE HERE)
- 1. WATERSHED WALK
- 2. WATER MANAGEMENT
- 3. PRAIRIE TO FOREST
- 4. FLOW OF WATER
- 5. LAKE BOUNCE
- 6. LEGACY OAK
- 7. WETLAND TRANSITION
- 8. OAK SILHOUETTE



WASSERMANN PARK

WASSERMANN  
POND

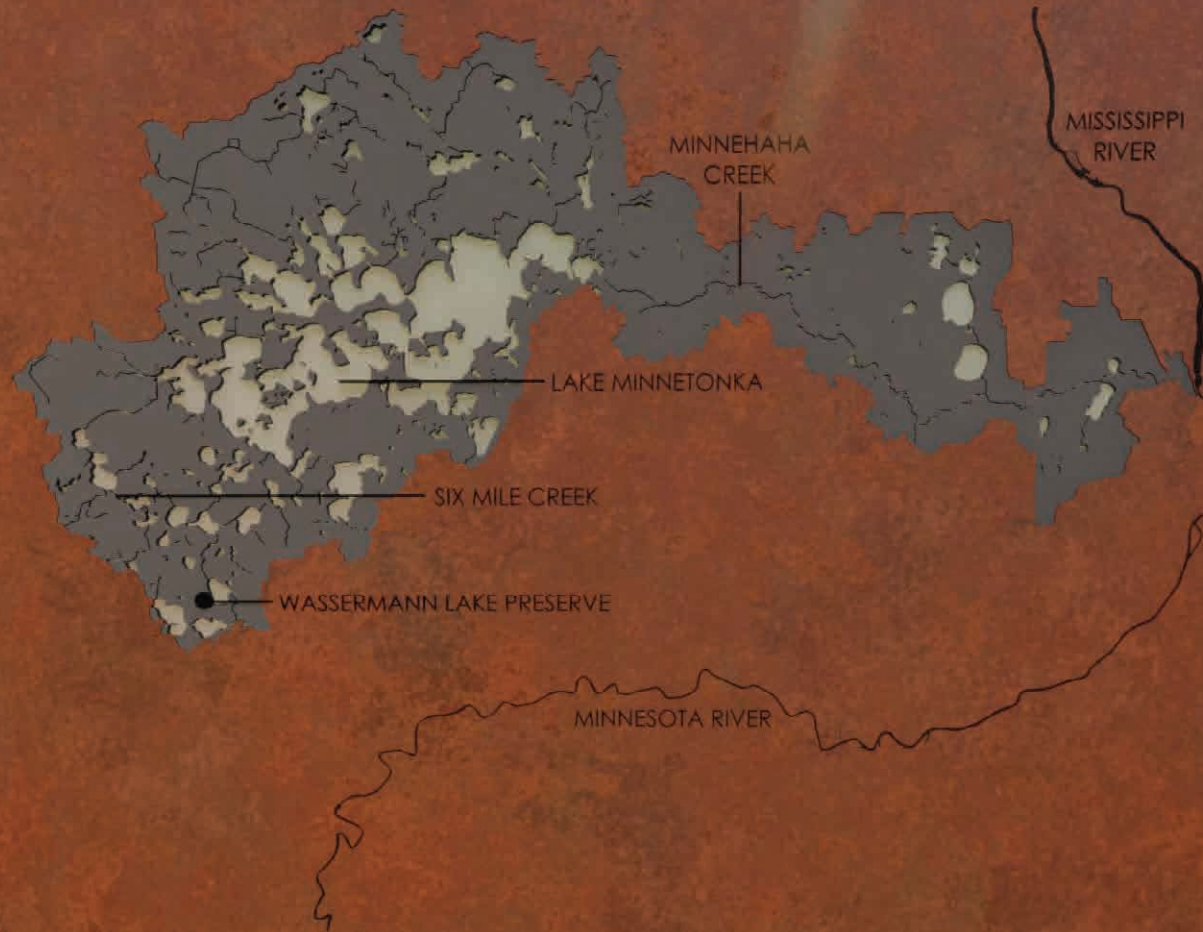
WASSERMANN  
LAKE

WASSERMANN LAKE PRESERVE

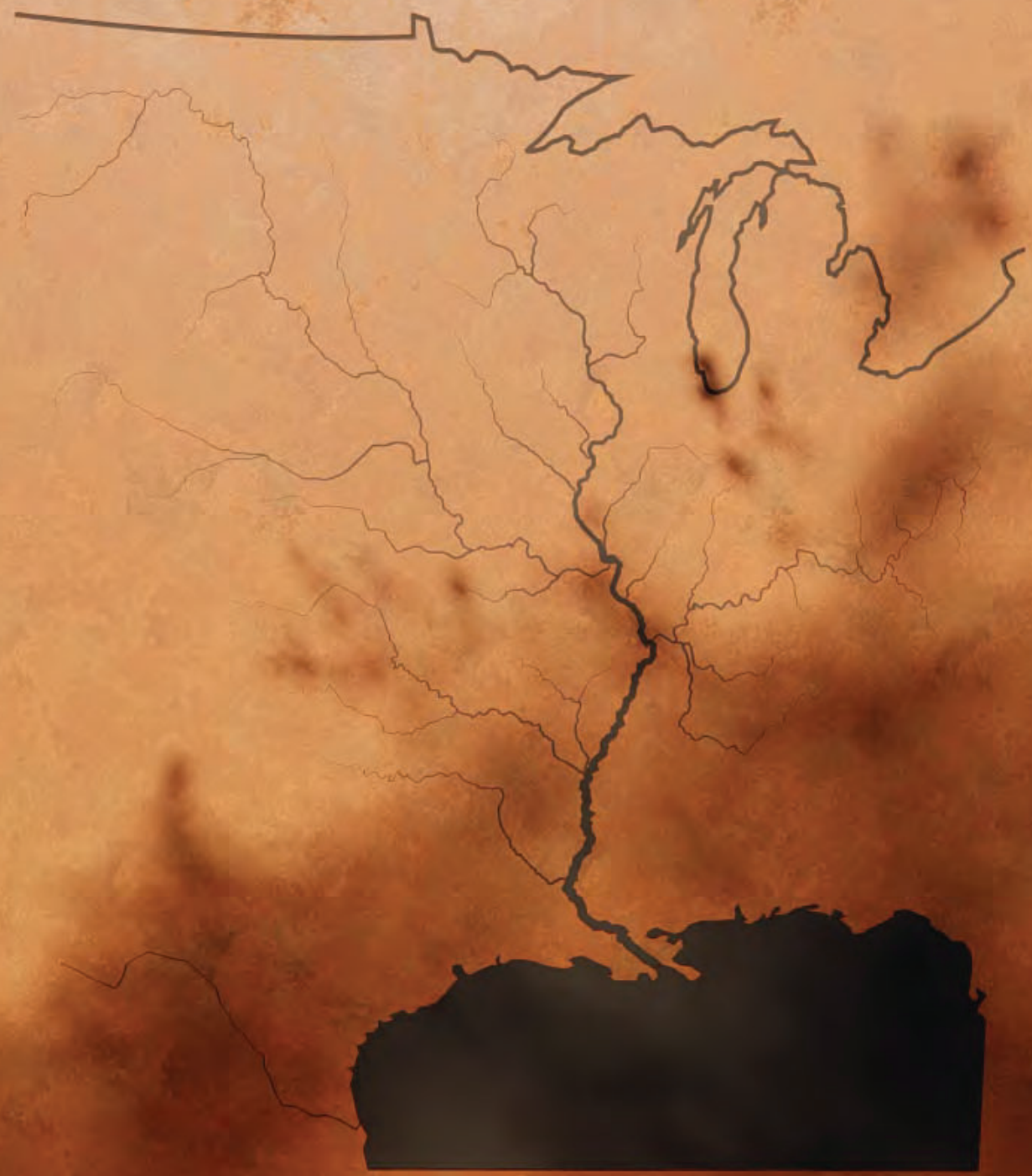




# MINNEHAHA CREEK WATERSHED



# WASSERMANN LAKE PRESERVE



## VICTORIA - CITY OF LAKES & PARKS



- VICTORIA FEATURES**
- 1. CANTONMENT WETLAND
  - 2. CANTONMENT WETLAND
  - 3. PROSPECTOR WETLAND
  - 4. WASSERMANN LAKE PRESERVE
  - 5. LEACH PARK
  - 6. WASSERMANN PARK

## WASSERMANN PARK

## WASSERMANN LAKE PRESERVE



- WASSERMANN LAKE PRESERVE**
- 1. WASSERMANN LAKE
  - 2. WASSERMANN LAKE PRESERVE
  - 3. WASSERMANN LAKE PRESERVE
  - 4. WASSERMANN LAKE PRESERVE
  - 5. WASSERMANN LAKE PRESERVE



1951

XXXX XXXX XXXXX XXXX X XXXXX  
XXXX XXXXX X XXXXXXXX XXXXX  
XXXX XX X XXXX X XXX XXXXXXXX  
XXXX XXX XXXXXXXXXX XX XXX  
XXXXX XXXXX XXX XXX XXXX XXX  
XXXXXXXX XXXXXX XX XXXXX  
XXXXXXXXXXXXXXXXXXXX XXXX



2018

XXXX XXXX XXXXX XXXX X XXXXX  
XXXX XXXXX X XXXXXXXX XXXXX  
XXXX XX X XXXX X XXX XXXXXXXX  
XXXX XXX XXXXXXXXXX XX XXX  
XXXXX XXXXX XXX XXX XXXX XXX  
XXXXXXXX XXXXXX XX XXXXX  
XXXXXXXXXXXXXXXXXXXX XXXX

## RESTORATION

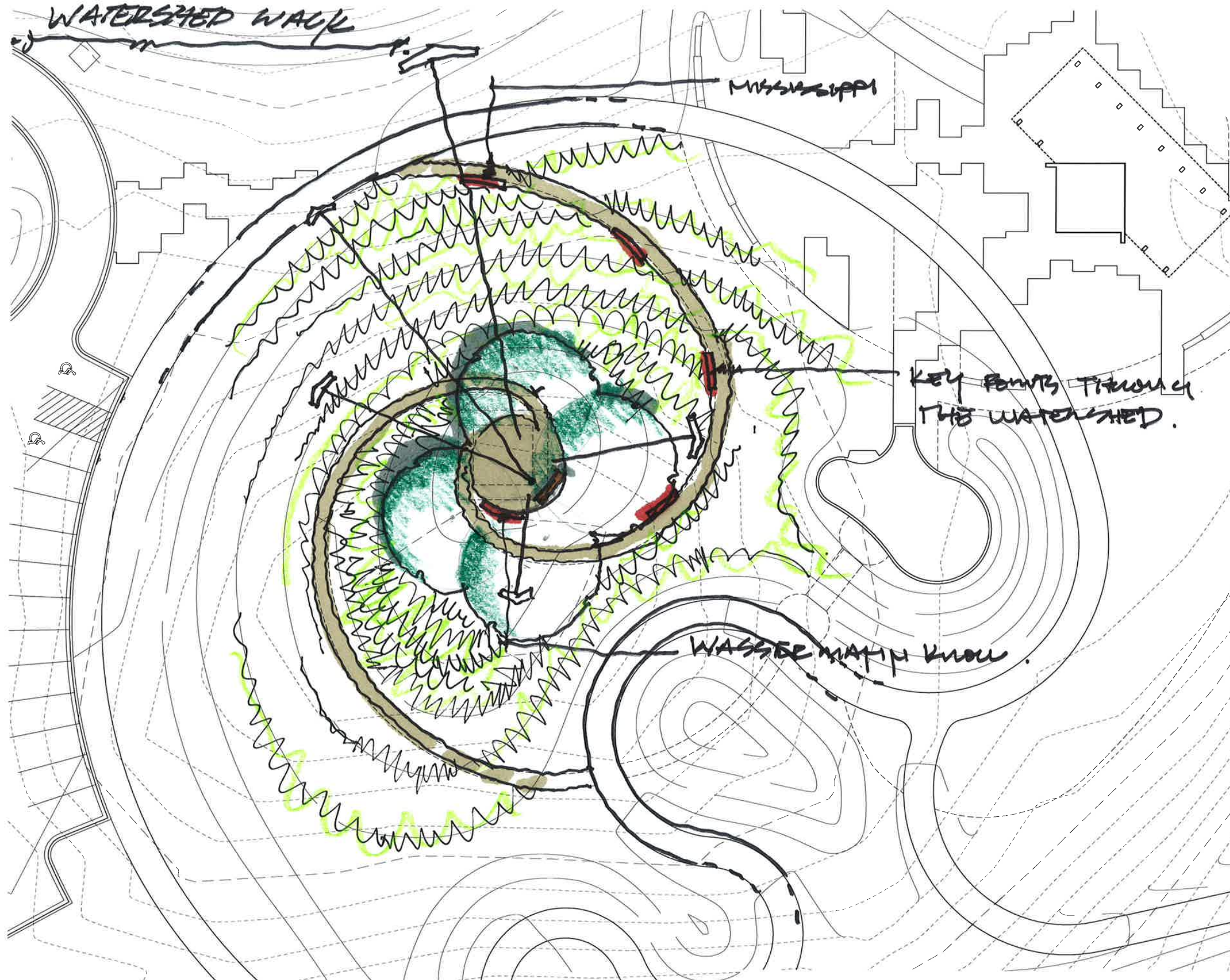
Tur rem as erovit, optatint doluptiis  
sequo intius eost, quo volento te vel  
in cume dis alibusam hariat ist, utaque  
explia ad mintem de nonecullauta pra  
nos qui odi utam, quas earchitia sus  
veleceproria voluptata quaerei ctotaqui  
officabo. Ratae pere nia verum,  
ommolles andellaut plam etus et  
quatuiit ati voluptatem. Atem qui  
dolorehendel minulpa qui venis.

Essiliustium que dolo optatus, solum  
volorep elesedia consero dolorum  
quaest inctur?



ASPERMAN PARK

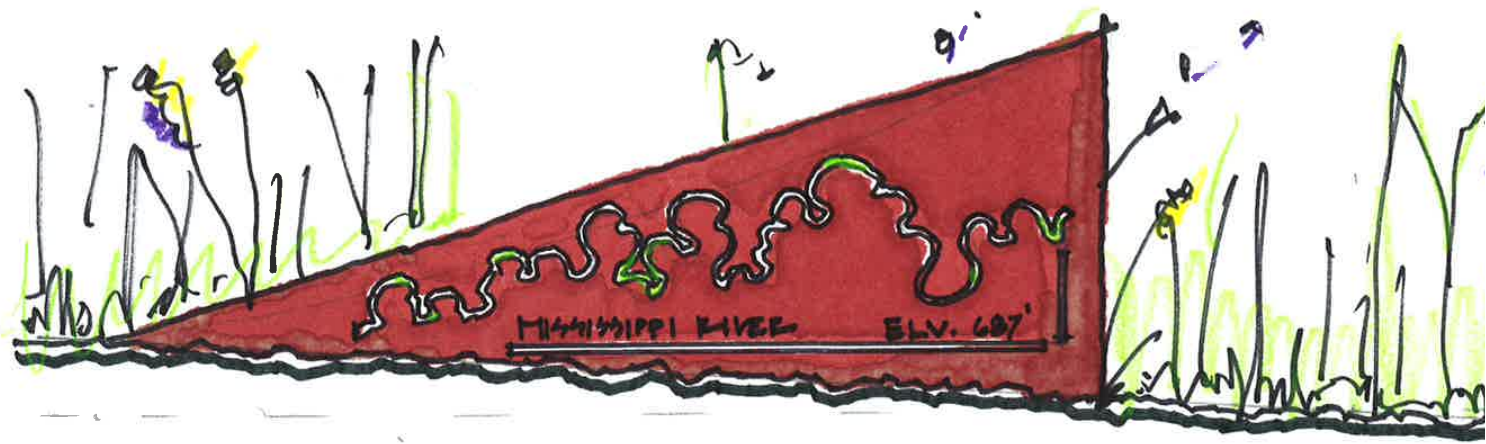
### 3. WATERSHED WALK PLAN



#### graphic features

- 5 corten panels tell the story of the watershed through (5) key locations that define the character of the watershed
- placement reflects the path of water from the Wassermann Lake Preserve to the Mississippi River and beyond
- custom cut out graphics illustrate the narrative of each panel and the watershed as a whole

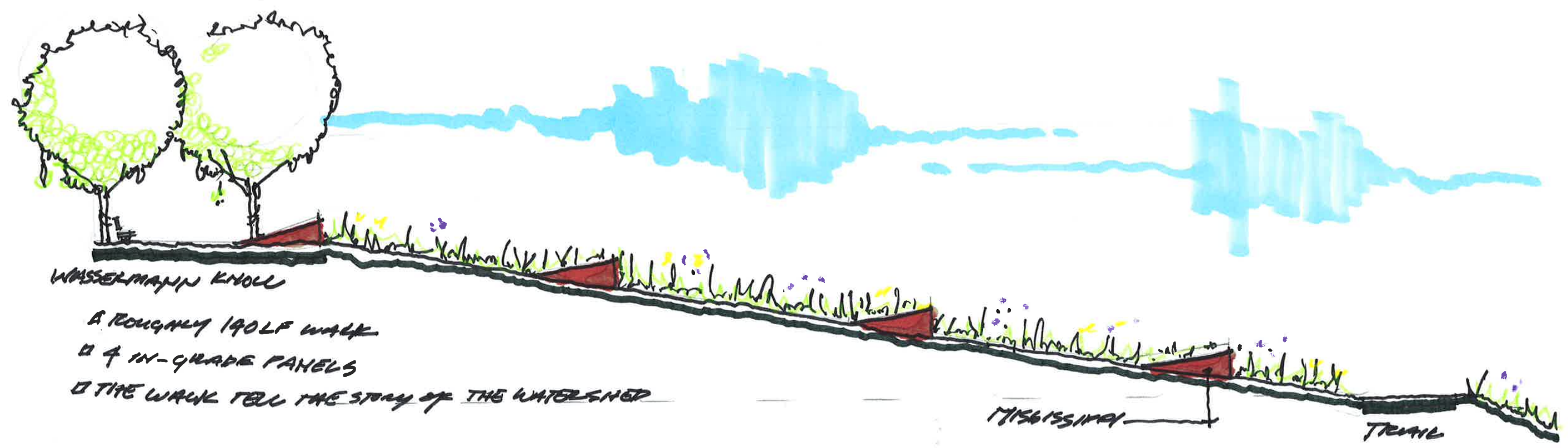
### 3. WATERSHED WALK PANELS



- WATERSHED WALK**
- WASSERMANN KNOLL 975.25'
  - WASSERMANN LAKE 945'
  - MINNETONKA (DAM) 930'
  - MINNEHaha FALLS ELV. 810'
  - MISSISSIPPI R. ELV. 687'

**graphic features**

- corten cutouts illustrate the form of the river at key moments along with their names and elevations
- proposed locations
  1. wassermann knoll - 975.25'
  2. wassermann lake - 954'
  3. grey's bay dam - 930'
  4. minnehaha falls - 810'
  5. mississippi river - 687'



WASSERMANN KNOLL  
 A ROUGHLY 190LF WALK  
 □ 4 IN-GRADE PANELS  
 □ THE WALK TELL THE STORY OF THE WATERSHED

## 4. PRAIRIE TO FOREST PLAN

### graphic features

- playful grove knitted into play
- spaces and key intersection of park paths- location highlights the transition of forest to prairie. A story of both time (early successional forest) as well as space (prairie edge to oak forest).
- aspens express the forest "edge"

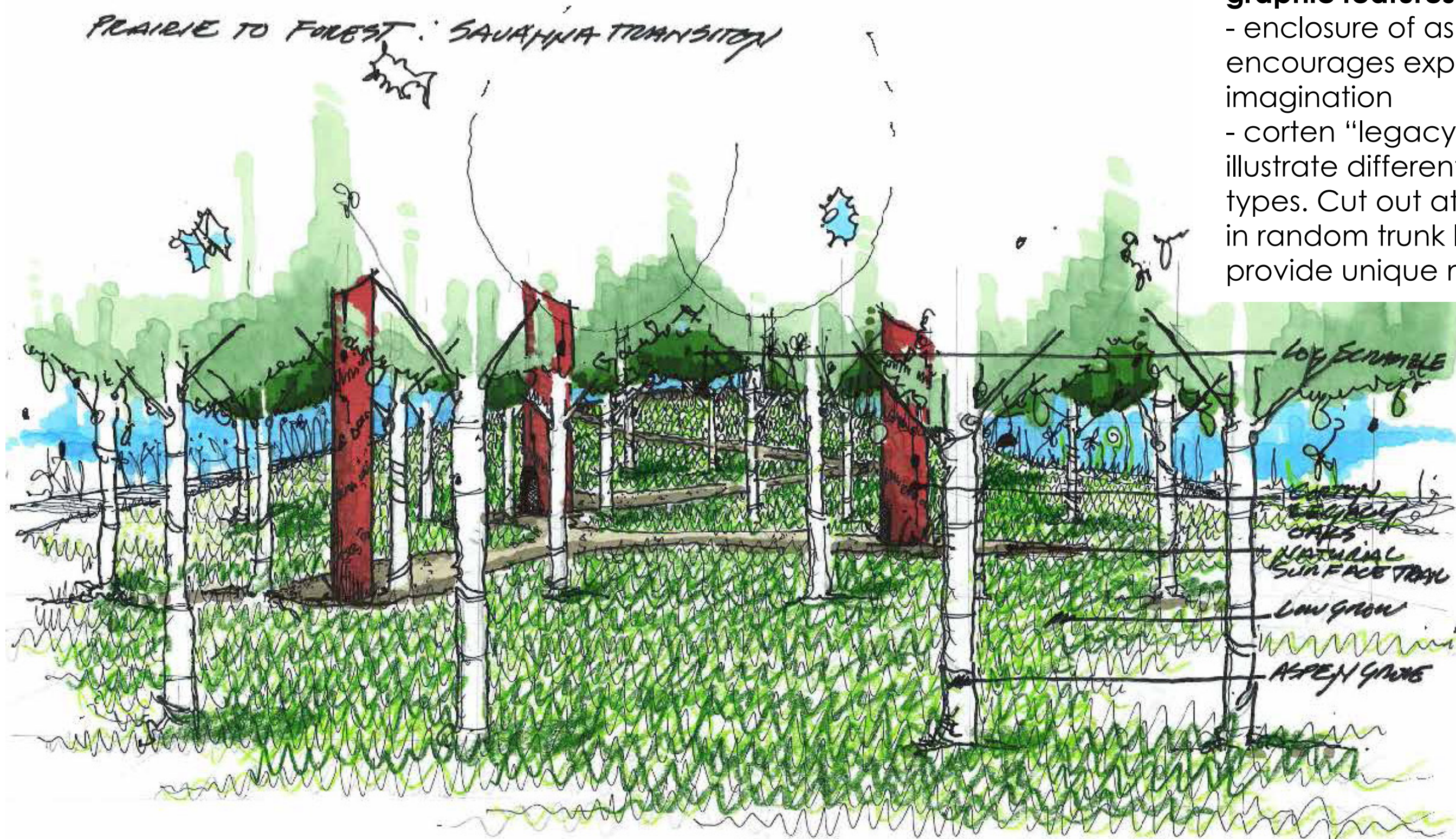




## 4. PRAIRIE TO FOREST PLAY SPACE

### graphic features

- enclosure of aspen grove encourages exploration and imagination
- corten "legacy oaks" illustrate different forest cover types. Cut out at bases & in random trunk locations provide unique messaging.

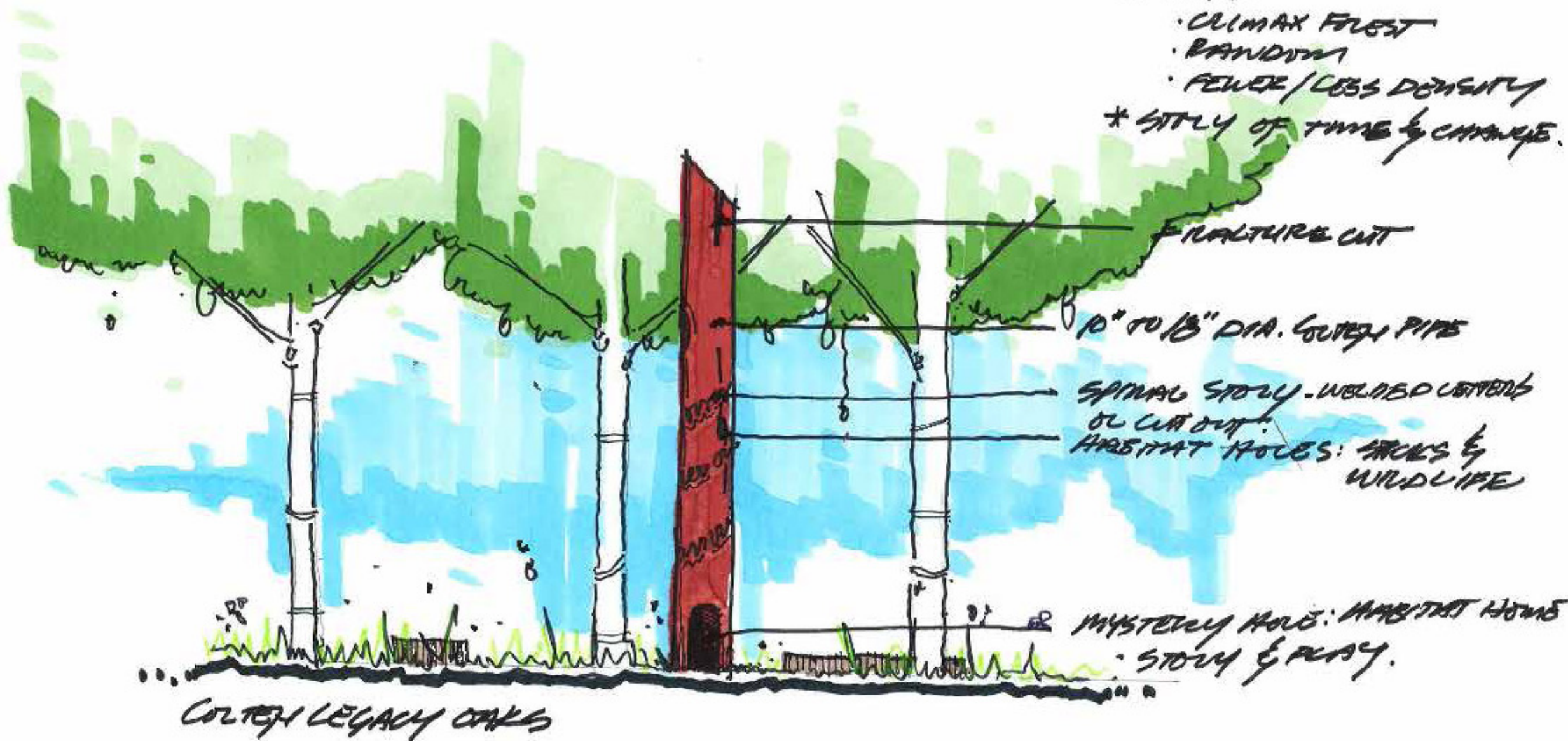


## 4. PRAIRIE TO FOREST OAKS AND ASPENS

### graphic features

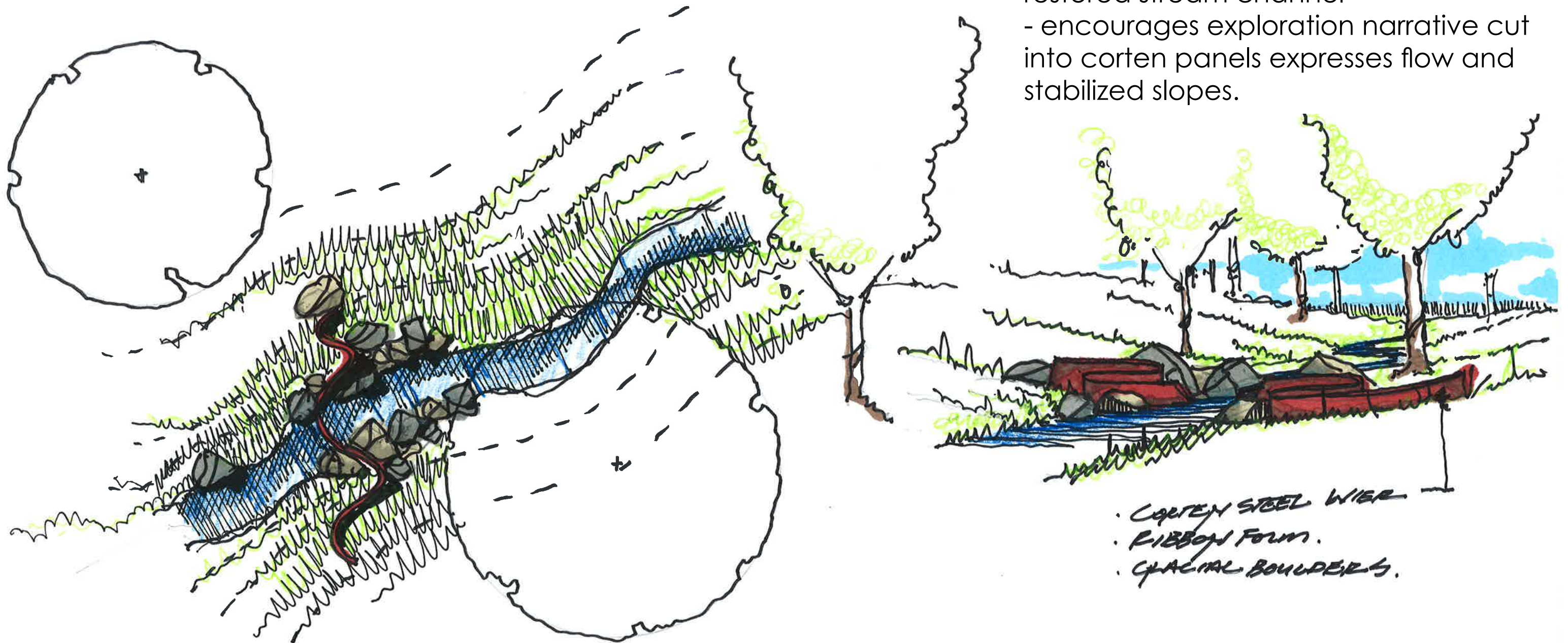
- merged "tree" cover types represent succession and transition of vegetation covers through both space and time.
- corten cut-outs in oak represent trees as habitat and are playful and encourage interaction.

PRAIRIE TO FOREST: SAVANNAH TRANSITION.  
SPACE & TIME



## 5. FLOW OF WATER STREAM

FLOW OF WATER



### graphic features

- corten "ribbon" illustrates the movement of water
- placement near slope of stream and rock weir highlights the function of the restored stream channel
- encourages exploration narrative cut into corten panels expresses flow and stabilized slopes.

- CORTEN STEEL WIER
- RIBBON FORM.
- GLACIAL BOULDERS.

## 6. LEGACY OAK FIRE RING

### graphic features

- corten overlay represents the cross-cut section of one of the park's largest legacy oaks (still standing)
- text expresses species, tree tag # and age of tree

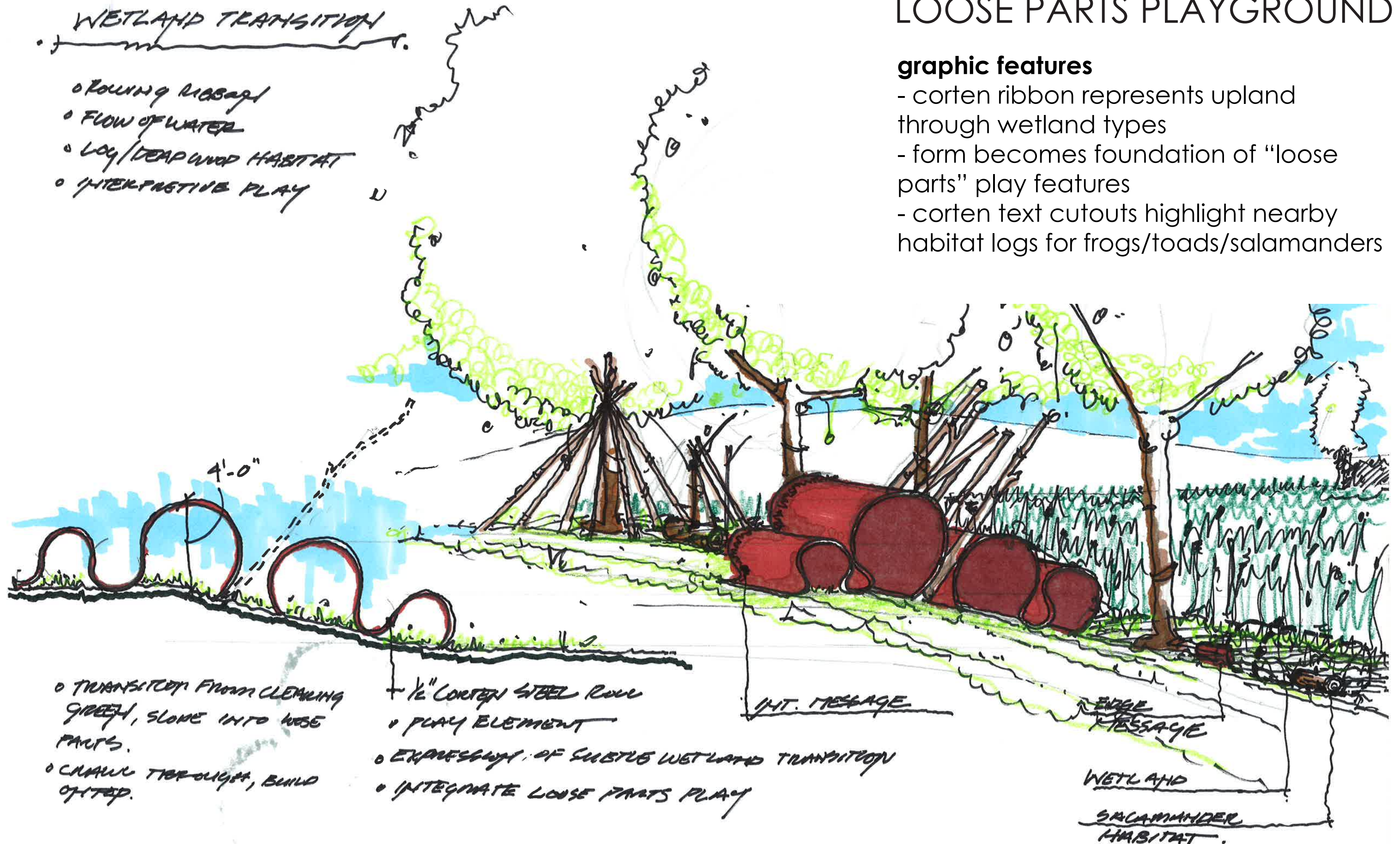


## 8. WETLAND TRANSITION

### LOOSE PARTS PLAYGROUND

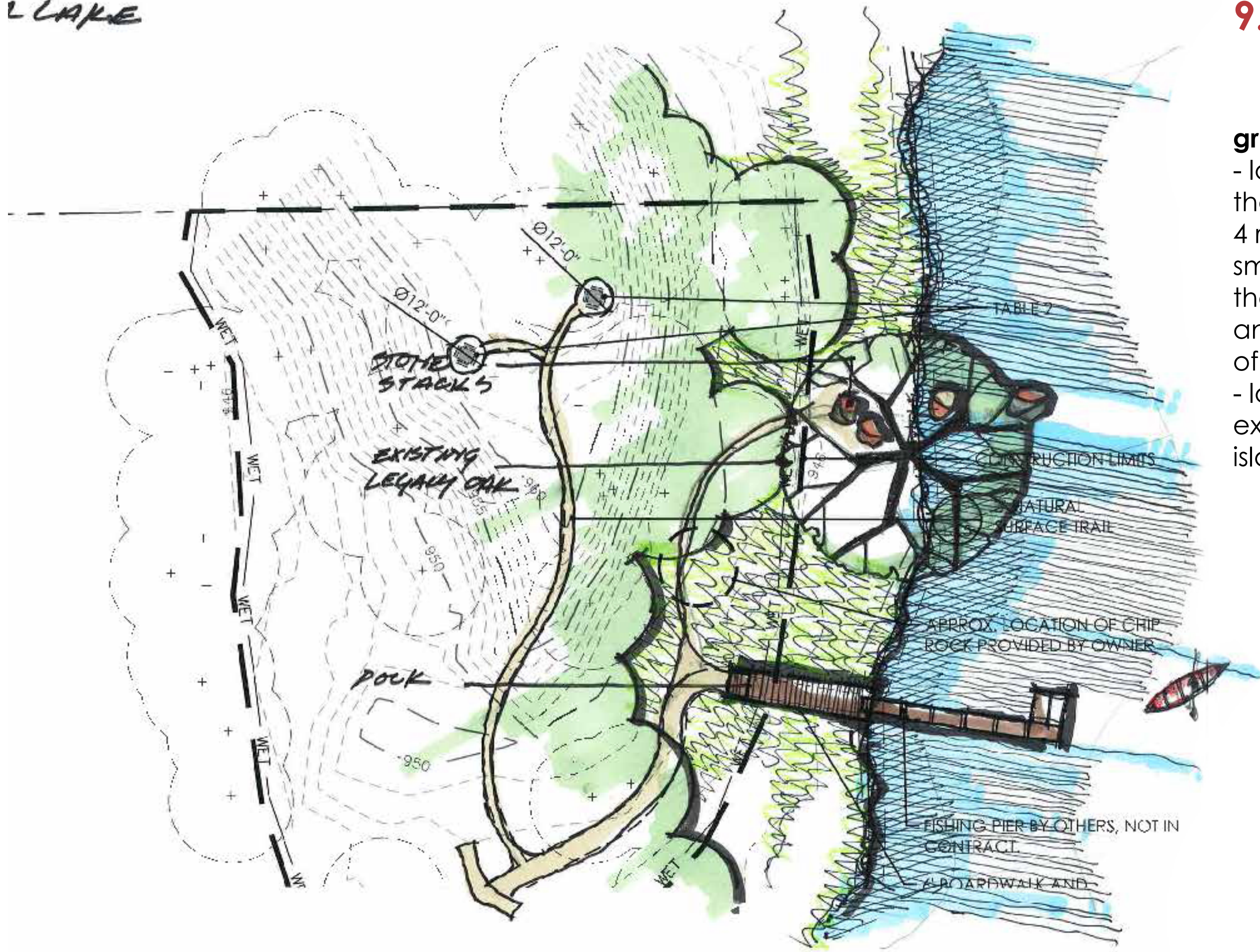
#### graphic features

- corten ribbon represents upland through wetland types
- form becomes foundation of "loose parts" play features
- corten text cutouts highlight nearby habitat logs for frogs/toads/salamanders



L LAKE

# 9. LAKE BOUNCE PLAN



## graphic features

- located at the end of the park walking loop, 4 rock stacks create a small seating grove on the edge of the lake and under the canopy of a legacy oak
- location encourages exploration on the island

## 9. LAKE BOUNCE STONE STACKS



### graphic features

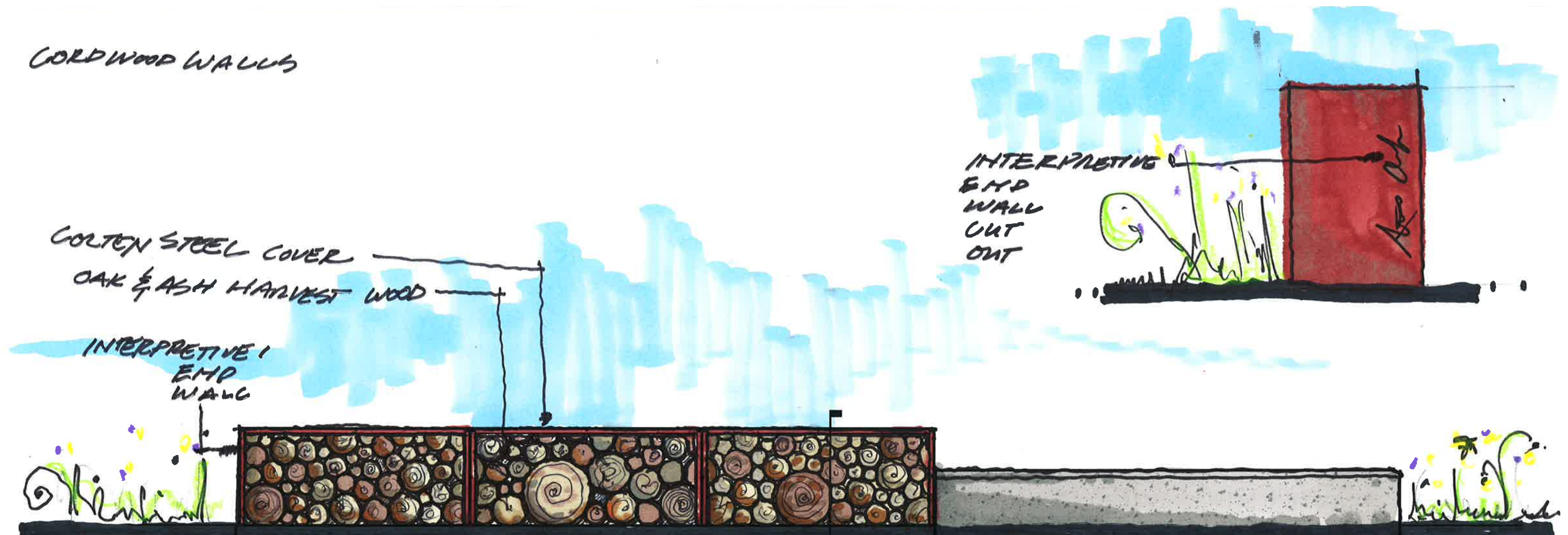
- cut granite slabs stacked on land and in water create seating and register the fluctuations in lake water level
- corten panels with cut-outs and text highlight the water level fluctuation of a prairie lake

# 10. SALVAGED CORDWOOD SITE WALLS

## SHELTER PLAZA

### graphic features

- walls constructed of oak and ash logs salvaged from site restoration work
- corten steel shroud covers cordwood
- end wall cutouts add direct interpretive narrative to material re-use story



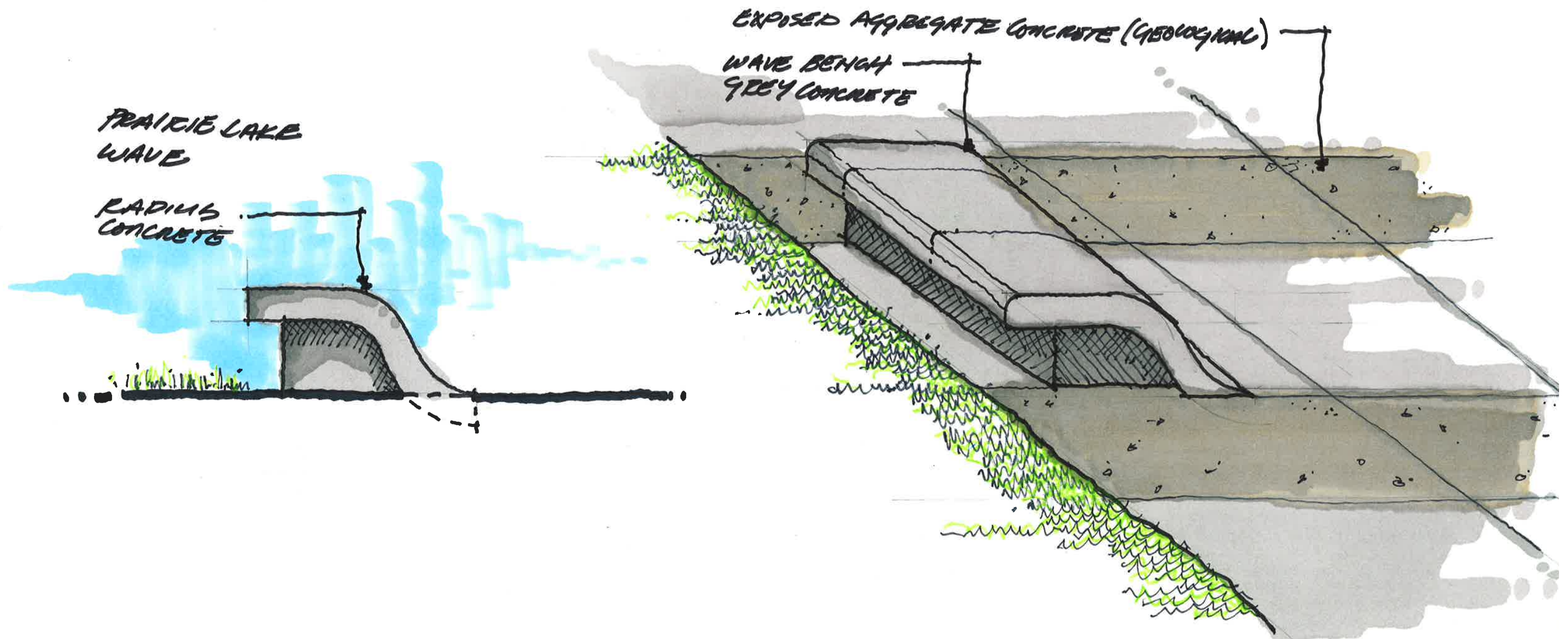


# 11. WAVE BENCH & EXPOSED AGGREGATE CONCRETE SHELTER PLAZA

WAVE BENCH

## graphic features

- bench form reflects movement of water and interactions with river and lake beds
- exposed aggregate concrete recalls glacial impact of landscape



# 12. WAVE SEAT WALLS CLEARING SPACE & FIRE RING

## graphic features

- similar to the wave bench, this form reflects the flow of water or the movement of an oak root lifting from forest floor
- opportunities for integrativing direct interpretation on to concrete form

## CLEARING GATHERING SPACE

